

RECEIVED

JUN 26 2015

WR-35
Rev. 8/23/13 WV GEOLOGICAL SURVEY
MORGANTOWN, WV

Page ___ of ___

State of West Virginia
Department of Environmental Protection - Office of Oil and Gas
Well Operator's Report of Well Work

API 47-017-06366 County Doddridge District New Milton
Quad New Milton 7.5' Pad Name Cline Pad Field/Pool Name _____
Farm name Cline, Johnnie et al Well Number Farrow Unit 3H
Operator (as registered with the OOG) Antero Resources Corporation
Address 1615 Wynkoop Street City Denver State CO Zip 80202

As Drilled location NAD 83/UTM Attach an as-drilled plat, profile view, and deviation survey
Top hole Northing 4,337,440m Easting 525,946m
Landing Point of Curve Northing 4,337,653.76m Easting 526,444.98m
Bottom Hole Northing 4,339,518m Easting 525,846m

Elevation (ft) 1,096' GL Type of Well New Existing Type of Report Interim Final
Permit Type Deviated Horizontal Horizontal 6A Vertical Depth Type Deep Shallow
Type of Operation Convert Deepen Drill Plug Back Redrilling Rework Stimulate
Well Type Brine Disposal CBM Gas Oil Secondary Recovery Solution Mining Storage Other _____
Type of Completion Single Multiple Fluids Produced Brine Gas NGL Oil Other _____
Drilled with Cable Rotary

Drilling Media Surface hole Air Mud Fresh Water Intermediate hole Air Mud Fresh Water Brine
Production hole Air Mud Fresh Water Brine
Mud Type(s) and Additive(s)
Air- Foam & 4% KCL
Mud- Polymer

Date permit issued 10/04/2013 Date drilling commenced 11/25/2013 Date drilling ceased 06/01/2014
Date completion activities began 07/27/2014 Date completion activities ceased 11/08/2014
Verbal plugging (Y/N) N/A Date permission granted N/A Granted by N/A

Please note: Operator is required to submit a plugging application within 5 days of verbal permission to plug

Freshwater depth(s) ft 59' Open mine(s) (Y/N) depths No
Salt water depth(s) ft 637' Void(s) encountered (Y/N) depths None
Coal depth(s) ft None Identified Cavern(s) encountered (Y/N) depths None
Is coal being mined in area (Y/N) No

Reviewed by:

RECEIVED

JUN 26 2015

WR-35 WV GEOLOGICAL SURVEY
Rev. 8/23/13 MORGANTOWN, WV

Page ___ of ___

API 47-017 - 06366 Farm name Cline, Johnnie et al Well number Farrow Unit 3H

| CASING STRINGS | Hole Size | Casing Size | Depth | New or Used | Grade wt/ft | Basket Depth(s) | Did cement circulate (Y/N) * Provide details below* |
|---------------------------|-----------------|-------------|--------|-------------|-------------|-----------------|--|
| Conductor | 30" | 20" | 53' | New | 94#; J-55 | N/A | Yes |
| Surface | 17 1/2" | 13 3/8" | 390' | New | 48#; J-55 | N/A | Yes |
| Coal | | | | | | | |
| Intermediate 1 | 12 1/4" | 9 5/8" | 2,559' | New | 36#; J-55 | N/A | Yes |
| Intermediate 2 | | | | | | | |
| Intermediate 3 | | | | | | | |
| Production | 8 3/4" & 8 1/2" | 5 1/2" | 14,253 | New | 20#; P-110 | N/A | Yes |
| Tubing | | 2 3/8" | 7,474' | | 4.7#; N-80 | N/A | |
| Packer type and depth set | N/A | | | | | | |

Comment Details _____

| CEMENT DATA | Class/Type of Cement | Number of Sacks | Slurry wt (ppg) | Yield (ft ³ /sks) | Volume (ft ²) | Cement Top (MD) | WOC (hrs) |
|----------------|----------------------|----------------------------------|--------------------------|------------------------------|---------------------------|--------------------------------|-----------|
| Conductor | Class A | 196 sx | 15.6 | 1.18 | 38 | 0' | 8 Hrs. |
| Surface | Class A | 480 sx | 15.6 | 1.18 | 271 | 0' | 8 Hrs. |
| Coal | | | | | | | |
| Intermediate 1 | Class A | 1,002 sx | 15.6 | 1.18 | 797 | 0' | 8 Hrs. |
| Intermediate 2 | | | | | | | |
| Intermediate 3 | | | | | | | |
| Production | Class H | 1,034 sx (Lead); 1,116 sx (Tail) | 13.5 (Lead); 15.2 (Tail) | 1.0 (Lead); 1.80 (Tail) | 2,797 | -500' into Intermediate Casing | 8 Hrs. |
| Tubing | | | | | | | |

Drillers TD (ft) 14,253' MD, 7,041' TVD (BHL) 7,087' TVD (Deepest Point Drilled) Loggers TD (ft) 14,204'
Deepest formation penetrated Marcellus Plug back to (ft) N/A
Plug back procedure N/A

Kick off depth (ft) 6,759'

**This is a subsequent well. Antero only runs wireline logs on one well on a multi-well pad (Nickers Unit 3H, API #47-017-06333). Please reference the wireline logs submitted with Form WR-35 for the Nickers Unit 3H. A Cement Bond Log has been included with this submittal.

Check all wireline logs run **
 caliper density deviated/directional induction
 neutron resistivity gamma ray temperature sonic

Well cored Yes No Conventional Sidewall Were cuttings collected Yes No

DESCRIBE THE CENTRALIZER PLACEMENT USED FOR EACH CASING STRING _____

Conductor- 0
Surface- 1 above guide shoe, 1 above insert float, 1 every 4th joint to surface
Intermediate- 1 above float joint, 1 above float collar, 1 every 4th joint to surface
Production- 1 above float joint, 1 below float collar, 1 every 3rd joint to top of cement

WAS WELL COMPLETED AS SHOT HOLE Yes No DETAILS _____

WAS WELL COMPLETED OPEN HOLE? Yes No DETAILS _____

WERE TRACERS USED Yes No TYPE OF TRACER(S) USED RA; Chemical

RECEIVED

JUN 26 2015

WR-35
Rev. 8/23/13

WV GEOLOGICAL SURVEY
MORGANTOWN, WV

Page ___ of ___

API 47- 017 - 06366 Farm name Cline, Johnnie et al Well number Farrow Unit 3H

PERFORATION RECORD

| Stage No. | Perforation date | Perforated from MD ft. | Perforated to MD ft. | Number of Perforations | Formation(s) |
|--|------------------|------------------------|----------------------|------------------------|--------------|
| | | | | | |
| | | | | | |
| | | | | | |
| | | | | | |
| * PLEASE SEE ATTACHED EXHIBIT 1 | | | | | |
| | | | | | |
| | | | | | |
| | | | | | |
| | | | | | |
| | | | | | |
| | | | | | |
| | | | | | |
| | | | | | |
| | | | | | |
| | | | | | |
| | | | | | |

Please insert additional pages as applicable.

STIMULATION INFORMATION PER STAGE

Complete a separate record for each stimulation stage.

| Stage No. | Stimulations Date | Ave Pump Rate (BPM) | Ave Treatment Pressure (PSI) | Max Breakdown Pressure (PSI) | ISIP (PSI) | Amount of Proppant (lbs) | Amount of Water (bbls) | Amount of Nitrogen/other (units) |
|--|-------------------|---------------------|------------------------------|------------------------------|------------|--------------------------|------------------------|----------------------------------|
| | | | | | | | | |
| | | | | | | | | |
| | | | | | | | | |
| | | | | | | | | |
| * PLEASE SEE ATTACHED EXHIBIT 2 | | | | | | | | |
| | | | | | | | | |
| | | | | | | | | |
| | | | | | | | | |
| | | | | | | | | |
| | | | | | | | | |
| | | | | | | | | |
| | | | | | | | | |
| | | | | | | | | |
| | | | | | | | | |
| | | | | | | | | |

Please insert additional pages as applicable.

JUN 26 2015

WR-35
Rev. 8/23/13

WV GEOLOGICAL SURVEY
MORGANTOWN, WV

Page ___ of ___

API 47- 017 - 06366 Farm name Cline, Johnnie et al Well number Farrow Unit 3H

| PRODUCING FORMATION(S) | DEPTHS | | |
|------------------------|--------------|-------|-----------------|
| Marcellus | 7,025' (top) | TVD | 7,530' (top) MD |
| _____ | _____ | _____ | _____ |
| _____ | _____ | _____ | _____ |

Please insert additional pages as applicable.

GAS TEST Build up Drawdown Open Flow OIL TEST Flow Pump

SHUT-IN PRESSURE Surface 3950 psi Bottom Hole _____ psi DURATION OF TEST _____ hrs

OPEN FLOW Gas 9,410 mcfpd Oil 3 bpd NGL _____ bpd Water 676 bpd
GAS MEASURED BY Estimated Orifice Pilot

| LITHOLOGY/ FORMATION | TOP | BOTTOM | TOP | BOTTOM | DESCRIBE ROCK TYPE AND RECORD QUANTITY AND TYPE OF FLUID (FRESHWATER, BRINE, OIL, GAS, H ₂ S, ETC) |
|-------------------------|-------------------------|--------------------|-------------------|-------------------|--|
| | DEPTH IN FT NAME TVD | DEPTH IN FT TVD | DEPTH IN FT MD | DEPTH IN FT MD | |
| | 0 | | 0 | | |
| | | | | | |
| | | | | | |
| | | | | | |
| | | | | | |
| | | | | | |
| | | | | | |
| | | | | | |
| | | | | | |
| | | | | | |
| | | | | | |
| | | | | | |
| | | | | | |
| | | | | | |
| | | | | | |
| | | | | | |
| | | | | | |

*** PLEASE SEE ATTACHED EXHIBIT 3**

Please insert additional pages as applicable.

Drilling Contractor Patterson - UTI Drilling Company LLC
Address 207 Carlton Drive City Eighty Four State PA Zip 15330

Logging Company Rush Wellsite Services
Address 600 Alpha Drive City Canonsburg State PA Zip 15317

Cementing Company Allied Oil & Gas Services, LLC
Address 1036 East Main Street City Bridgeport State WV Zip 26330

Stimulating Company US Well Services
Address 533 Industrial Park Drive City Jane Lew State WV Zip 26378

Please insert additional pages as applicable.

Completed by Megan Darling Telephone 303-357-7230
Signature Megan C. Darling Title Permitting Agent Date 06/26/2015

RECEIVED

JUN 26 2015

WV GEOLOGICAL SURVEY
MORGANTOWN, WV

API 47-017-06366 Farm Name Cline, Johnnie et al Well Number Farrow Unit 3H

EXHIBIT 1

| Stage No. | Perforation Date | Perforated from MD ft. | Perforated to MD ft. | Number of Perforations | Formations |
|-----------|------------------|------------------------|----------------------|------------------------|------------|
| 1 | 27-Jul-14 | 13,997 | 14,161 | 60 | Marcellus |
| 2 | 18-Sep-14 | 13,796 | 13,965 | 60 | Marcellus |
| 3 | 18-Sep-14 | 13,595 | 13,765 | 60 | Marcellus |
| 4 | 18-Sep-14 | 13,395 | 13,564 | 60 | Marcellus |
| 5 | 18-Sep-14 | 13,194 | 13,363 | 60 | Marcellus |
| 6 | 19-Sep-14 | 12,993 | 13,163 | 60 | Marcellus |
| 7 | 19-Sep-14 | 12,793 | 12,962 | 60 | Marcellus |
| 8 | 19-Sep-14 | 12,592 | 12,761 | 60 | Marcellus |
| 9 | 20-Sep-14 | 12,391 | 12,560 | 60 | Marcellus |
| 10 | 20-Sep-14 | 12,190 | 12,360 | 60 | Marcellus |
| 11 | 20-Sep-14 | 11,990 | 12,159 | 60 | Marcellus |
| 12 | 21-Sep-14 | 11,789 | 11,958 | 60 | Marcellus |
| 13 | 21-Sep-14 | 11,588 | 11,757 | 60 | Marcellus |
| 14 | 21-Sep-14 | 11,387 | 11,557 | 60 | Marcellus |
| 15 | 22-Sep-14 | 11,187 | 11,356 | 60 | Marcellus |
| 16 | 22-Sep-14 | 10,986 | 11,155 | 60 | Marcellus |
| 17 | 22-Sep-14 | 10,785 | 10,955 | 60 | Marcellus |
| 18 | 23-Sep-14 | 10,585 | 10,754 | 60 | Marcellus |
| 19 | 23-Sep-14 | 10,384 | 10,553 | 60 | Marcellus |
| 20 | 23-Sep-14 | 10,183 | 10,352 | 60 | Marcellus |
| 21 | 23-Sep-14 | 9,982 | 10,152 | 60 | Marcellus |
| 22 | 24-Sep-14 | 9,782 | 9,951 | 60 | Marcellus |
| 23 | 24-Sep-14 | 9,581 | 9,750 | 60 | Marcellus |
| 24 | 24-Sep-14 | 9,380 | 9,549 | 60 | Marcellus |
| 25 | 25-Sep-14 | 9,179 | 9,349 | 60 | Marcellus |
| 26 | 25-Sep-14 | 8,979 | 9,148 | 60 | Marcellus |
| 27 | 25-Sep-14 | 8,778 | 8,947 | 60 | Marcellus |
| 28 | 25-Sep-14 | 8,577 | 8,746 | 60 | Marcellus |
| 29 | 26-Sep-14 | 8,376 | 8,546 | 60 | Marcellus |
| 30 | 26-Sep-14 | 8,176 | 8,345 | 60 | Marcellus |
| 31 | 26-Sep-14 | 7,975 | 8,144 | 60 | Marcellus |
| 32 | 27-Sep-14 | 7,774 | 7,944 | 60 | Marcellus |
| 33 | 27-Sep-14 | 7,574 | 7,743 | 60 | Marcellus |

JUN 26 2015

WV GEOLOGICAL SURVEY
MORGANTOWN, WV

API 47-017-06366 Farm Name Cline, Johnnie et al Well Number Farrow Unit 3H

EXHIBIT 2

| Stage No. | Stimulations Date | Avg Pump Rate | Avg Treatment Pressure (PSI) | Max Breakdown Pressure (PSI) | ISIP (PSI) | Amount of Proppant (lbs) | Amount of Water (bbls) | Amount of Nitrogen/ other (units) |
|-----------|-------------------|---------------|------------------------------|------------------------------|--------------|--------------------------|------------------------|-----------------------------------|
| 1 | 17-Sep-14 | 67.0 | 7,032 | 6,112 | 5,178 | 72,500 | 7,155 | N/A |
| 2 | 18-Sep-14 | 73.0 | 7,132 | 6,247 | 5,289 | 78,103 | 7,067 | N/A |
| 3 | 18-Sep-14 | 64.0 | 6,465 | 5,704 | 5,010 | 177,750 | 7,077 | N/A |
| 4 | 18-Sep-14 | 63.0 | 6,716 | 6,366 | 5,164 | 200,340 | 6,281 | N/A |
| 5 | 18-Sep-14 | 64.0 | 6,838 | 6,194 | 5,239 | 208,385 | 6,452 | N/A |
| 6 | 19-Sep-14 | 62.0 | 6,640 | 6,180 | 4,746 | 205,900 | 6,436 | N/A |
| 7 | 19-Sep-14 | 62.0 | 6,813 | 6,208 | 4,853 | 208,200 | 6,422 | N/A |
| 8 | 19-Sep-14 | 64.0 | 6,839 | 5,969 | 5,296 | 238,240 | 6,907 | N/A |
| 9 | 20-Sep-14 | 64.0 | 6,710 | 5,819 | 5,318 | 231,500 | 6,875 | N/A |
| 10 | 20-Sep-14 | 63.0 | 6,797 | 6,151 | 5,060 | 229,150 | 6,850 | N/A |
| 11 | 20-Sep-14 | 64.0 | 6,899 | 6,173 | 5,211 | 232,170 | 6,828 | N/A |
| 12 | 21-Sep-14 | 63.6 | 6,656 | 5,944 | 5,590 | 227,745 | 6,799 | N/A |
| 13 | 21-Sep-14 | 62.0 | 6,677 | 6,094 | 4,785 | 232,750 | 6,777 | N/A |
| 14 | 21-Sep-14 | 64.0 | 6,611 | 6,040 | 5,676 | 226,345 | 6,766 | N/A |
| 15 | 22-Sep-14 | 64.0 | 6,697 | 5,776 | 4,967 | 230,065 | 6,746 | N/A |
| 16 | 22-Sep-14 | 64.2 | 6,386 | 5,636 | 5,107 | 232,945 | 6,982 | N/A |
| 17 | 22-Sep-14 | 65.0 | 6,493 | 5,708 | 5,429 | 233,290 | 6,693 | N/A |
| 18 | 23-Sep-14 | 63.0 | 6,341 | 5,821 | 5,146 | 212,350 | 6,742 | N/A |
| 19 | 23-Sep-14 | 64.6 | 6,248 | 5,947 | 6,115 | 232,075 | 6,647 | N/A |
| 20 | 23-Sep-14 | 64.1 | 6,493 | 5,862 | 5,482 | 233,240 | 6,625 | N/A |
| 21 | 23-Sep-14 | 63.0 | 6,361 | 5,718 | 5,296 | 231,115 | 6,598 | N/A |
| 22 | 24-Sep-14 | 64.0 | 6,458 | 5,819 | 5,558 | 232,825 | 6,582 | N/A |
| 23 | 24-Sep-14 | 64.5 | 6,378 | 5,744 | 5,397 | 229,895 | 6,563 | N/A |
| 24 | 24-Sep-14 | 64.0 | 6,469 | 5,892 | 4,413 | 238,320 | 6,564 | N/A |
| 25 | 25-Sep-14 | 64.8 | 6,473 | 5,693 | 5,304 | 231,545 | 6,523 | N/A |
| 26 | 25-Sep-14 | 63.7 | 6,325 | 5,486 | 5,683 | 230,005 | 6,493 | N/A |
| 27 | 25-Sep-14 | 64.0 | 6,392 | 5,788 | 5,035 | 233,780 | 6,466 | N/A |
| 28 | 25-Sep-14 | 64.0 | 6,181 | 5,533 | 4,900 | 230,580 | 6,441 | N/A |
| 29 | 26-Sep-14 | 64.2 | 6,444 | 5,876 | 5,668 | 230,370 | 6,433 | N/A |
| 30 | 26-Sep-14 | 64.4 | 6,554 | 6,280 | 5,375 | 231,345 | 6,410 | N/A |
| 31 | 26-Sep-14 | 63.0 | 6,470 | 6,316 | 5,002 | 235,350 | 6,385 | N/A |
| 32 | 27-Sep-14 | 65.0 | 6,307 | 5,822 | 4,728 | 236,060 | 6,360 | N/A |
| 33 | 27-Sep-14 | 60.0 | 6,455 | 6,652 | 4,853 | 130,950 | 7,602 | N/A |
| | AVG= | 64 | 6,568 | 5,957 | 5,208 | 7,065,183 | 220,547 | TOTAL |

RECEIVED

JUN 26 2015

WV GEOLOGICAL SURVEY
MORGANTOWN, WV

API 47-017-06366 Farm Name Cline, Johnnie et al Well Number Farrow Unit 3H

EXHIBIT 3

| LITHOLOGY/ FORMATION | TOP DEPTH (TVD) From Surface | BOTTOM DEPTH (TVD) From Surface | TOP DEPTH (MD) From Surface | BOTTOM DEPTH (MD) From Surface |
|------------------------------|---------------------------------|------------------------------------|--------------------------------|-----------------------------------|
| Fresh Water | 59' | N/A | 59' | N/A |
| Siltstone | 0 | 412 | 0 | 412 |
| Shale/ Trace Coal | Est. 412 | 537 | Est. 412 | 537 |
| Shale/ Limestone | Est. 537 | 557 | Est. 537 | 557 |
| Shale/ Sandstone | Est. 557 | 762 | Est. 557 | 762 |
| Shale/ Coal | Est. 762 | 787 | Est. 762 | 787 |
| Shale/ Sandstone | Est. 787 | 997 | Est. 787 | 997 |
| Siltstone | Est. 997 | 1,057 | Est. 997 | 1,057 |
| Shale | Est. 1057 | 1,307 | Est. 1057 | 1,307 |
| Shale/Limestone/ Trace Coal | Est. 1307 | 1,397 | Est. 1307 | 1,397 |
| Shale/ Siltstone | Est. 1397 | 1,437 | Est. 1397 | 1,437 |
| Sandstone/ Shale/ Trace Coal | Est. 1437 | 1,677 | Est. 1437 | 1,677 |
| Sandy Shale/ Coal | Est. 1677 | 1,747 | Est. 1677 | 1,747 |
| Shale | Est. 1747 | 1,812 | Est. 1747 | 1,812 |
| Shale/ Coal | Est. 1812 | 1,837 | Est. 1812 | 1,837 |
| Sandstone | Est. 1837 | 1,867 | Est. 1837 | 1,867 |
| Shale | Est. 1867 | 2,047 | Est. 1867 | 2,047 |
| Siltstone/ Shale | Est. 2047 | 2,107 | Est. 2047 | 2,107 |
| Shale | Est. 2107 | 2,133 | Est. 2107 | 2,133 |
| Big Lime | 2,133 | 2,229 | 2,133 | 2,229 |
| Big Injun | 2,229 | 2,436 | 2,229 | 2,436 |
| Gantz Sand | 2,436 | 2,569 | 2,436 | 2,569 |
| Fifty Foot Sandstone | 2,569 | 2,923 | 2,569 | 2,924 |
| Gordon | 2,923 | 3,280 | 2,924 | 3,289 |
| Fifth Sandstone | 3,280 | 3,338 | 3,289 | 3,350 |
| Bayard | 3,338 | 3,520 | 3,350 | 2,544 |
| Warren | 3,520 | 3,804 | 2,544 | 3,855 |
| Speechley | 3,804 | 4,010 | 3,855 | 4,081 |
| Baltown | 4,010 | 4,652 | 4,081 | 4,780 |
| Bradford | 4,652 | 5,113 | 4,780 | 5,289 |
| Benson | 5,113 | 5,373 | 5,289 | 5,575 |
| Alexander | 5,373 | 5,608 | 5,575 | 5,832 |
| Elk | 5,608 | 6,130 | 5,832 | 6,400 |
| Rhinestreet | 6,130 | 6,610 | 6,400 | 6,929 |
| Sycamore | 6,610 | 6,769 | 6,929 | 7,114 |
| Middlesex | 6,769 | 6,905 | 7,114 | 7,290 |
| Burkett | 6,905 | 6,940 | 7,290 | 7,344 |
| Tully | 6,940 | 7,025 | 7,344 | 7,530 |
| Marcellus | 7,025 | NA | 7,530 | NA |

*Please note Antero determines shallow formation tops based on mud logs that are only run on one well on a multi-well pad. The measured depth (MD) data on subsequent wells may be slightly different due to the well's unique departure.

Hydraulic Fracturing Fluid Product Component Information Disclosure

RECEIVED
 JUN 26 2015
 WV GEOLOGICAL SURVEY
 MORGANTOWN, WV



| | |
|--------------------------------|------------------------------|
| Job Start Date: | 9/17/2014 |
| Job End Date: | 9/27/2014 |
| State: | West Virginia |
| County: | Doddridge |
| API Number: | 47-017-06366-00-00 |
| Operator Name: | Antero Resources Corporation |
| Well Name and Number: | Farrow Unit 3H |
| Longitude: | -80.69957800 |
| Latitude: | 39.18581400 |
| Datum: | NAD83 |
| Federal/Tribal Well: | NO |
| True Vertical Depth: | 7,087 |
| Total Base Water Volume (gal): | 9,262,974 |
| Total Base Non Water Volume: | 369,383 |

Hydraulic Fracturing Fluid Composition:

| Trade Name | Supplier | Purpose | Ingredients | Chemical Service Abstract Number (CAS #) | Maximum Ingredient Concentration in Additive (% by mass)** | Maximum Ingredient Concentration in HF Fluid (% by mass)** | Comments |
|------------------------|-------------------------|------------------|----------------------------|--|--|--|----------|
| Water | Antero Resources | Base Fluid | Water | 7732-18-5 | 100.00000 | 91.23741 | |
| Sand | U.S. Well Services, LLC | Proppant | Crystalline Silica, quartz | 14808-60-7 | 100.00000 | 8.34411 | |
| LGC-15 | U.S. Well Services, LLC | Gelling Agents | Guar Gum | 9000-30-0 | 50.00000 | 0.08958 | |
| | | | Petroleum Distillates | 64742-47-8 | 60.00000 | 0.08484 | |
| | | | Suspending agent (solid) | 14808-60-7 | 3.00000 | 0.01370 | |
| | | | Surfactant | 68439-51-0 | 3.00000 | 0.00537 | |
| HCL Acid (12.6%-18.0%) | U.S. Well Services, LLC | Bulk Acid | Water | 7732-18-5 | 87.50000 | 0.08610 | |
| | | | Hydrogen Chloride | 7641-01-1 | 18.00000 | 0.02057 | |
| WFRA-405 | U.S. Well Services, LLC | Friction Reducer | Anionic Polyacrylamide | Proprietary | | 0.03165 | |
| | | | Water | 7732-18-5 | 40.00000 | 0.03165 | |
| | | | Petroleum Distillates | 64742-47-8 | 22.00000 | 0.02548 | |
| | | | Ethoxylated alcohol blend | Proprietary | 5.00000 | 0.00396 | |

RECEIVED
 JUN 26 2015
 WY GEOLOGICAL SURVEY
 MORRIS TOWN, WY

| SI-1000 | U.S. Well Services, LLC | Scale Inhibitor | Crystalline Salt | 12125-02-9 | 5.00000 | 0.00396 |
|------------|-------------------------|---------------------------|---------------------------------|-------------|-----------|---------|
| | | | Anionic Copolymer | Proprietary | | 0.00438 |
| | | | Ethylene Glycol | 107-21-1 | 20.00000 | 0.00396 |
| | | | Water | 7732-18-5 | 30.00000 | 0.00331 |
| X-BAC 1020 | U.S. Well Services, LLC | Anti-Bacterial Agent | | | | |
| | | | 2,2-dibromo-3-nitropropionamide | 10222-01-2 | 20.00000 | 0.00465 |
| | | | Deionized Water | 7732-18-5 | 28.00000 | 0.00266 |
| AP One | U.S. Well Services, LLC | Gel Breakers | | | | |
| | | | Ammonium Persulfate | 7727-54-0 | 100.00000 | 0.00293 |
| AI-301 | U.S. Well Services | Acid Corrosion Inhibitors | | | | |
| | | | Diethylene Glycol | 111-46-6 | 30.00000 | 0.00013 |
| | | | Methanamine | 100-97-0 | 20.00000 | 0.00010 |
| | | | Hydrogen Chloride | 7647-01-0 | 10.00000 | 0.00005 |
| | | | Polyethylene polyamine | 68603-67-8 | 10.00000 | 0.00004 |
| | | | Coco amine | 61791-14-8 | 5.00000 | 0.00002 |

Ingredients shown above are subject to 29 CFR 1910.1200(i) and appear on Material Safety Data Sheets (MSDS). Ingredients shown below are Non-MSDS.

* Total Water Volume sources may include fresh water, produced water, and/or recycled water
 ** Information is based on the maximum potential for concentration and thus the total may be over 100%

Note: For Field Development Products (products that begin with FDP), MSDS level only information has been provided. Ingredient information for chemicals subject to 29 CFR 1910.1200(i) and Appendix D are obtained from suppliers Material Safety Data Sheets (MSDS)

LATITUDE 39°12'30"

9,378'

9,682' TO BOTTOM HOLE

LATITUDE 39°12'30"

LONGITUDE 80°40'00"

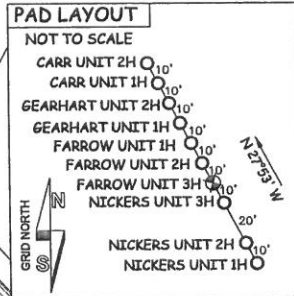
8,234'

LONGITUDE 80°40'00"

Antero Resources Corporation
Well No. Farrow Unit 3H
47-017-06366 (AS DRILLED)

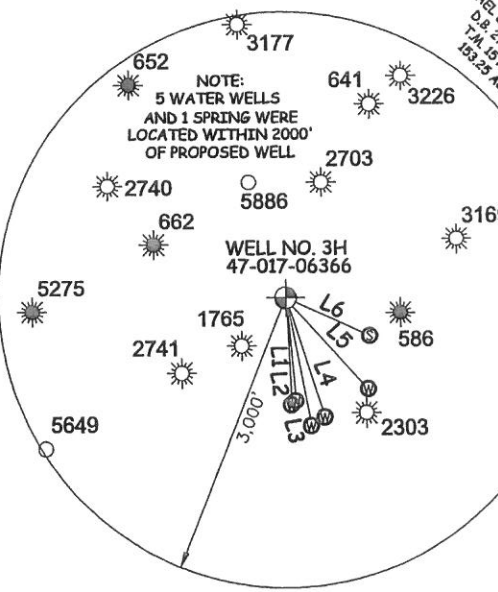
AS DRILLED DATA:
WELL 3H TOP HOLE INFORMATION:
N: 252,027ft E: 1,659,927ft
LAT: 39°11'08.62" LON: 80°41'59.10"
BOTTOM HOLE INFORMATION:
N: 258,853ft E: 1,659,712ft
LAT: 39°12'16.06" LON: 80°42'02.99"
WEST VIRGINIA COORDINATE SYSTEM OF 1927 NORTH ZONE.
ZONE WAS DERIVED FROM MEASUREMENTS TAKEN WITH TRIMBLE GEOXT SUBMETER MAPPING GRADE GPS UNIT. PLAT ORIENTATION, CORNER, AND WELL REFERENCE TIE LINES ARE BASED ON GRID NORTH.

(NAD) 83 (UTM) ZONE 17 COORDS:
WELL 3H TOP HOLE INFORMATION:
N: 4,337,440m E: 525,946m
BOTTOM HOLE INFORMATION:
N: 4,339,518m E: 525,846m



| LINE | BEARING | DISTANCE |
|------|------------|----------|
| L1 | S 03°10' E | 1144.0' |
| L2 | S 05°43' E | 1105.1' |
| L3 | S 11°12' E | 1383.4' |
| L4 | S 18°02' E | 1332.9' |
| L5 | S 41°40' E | 1311.0' |
| L6 | S 63°51' E | 993.3' |

- NOTE
1. NO OCCUPIED DWELLINGS OR BUILDINGS TWO THOUSAND FIVE HUNDRED (2,500) SQUARE FEET OR LARGER USED TO HOUSE OR SHELTER DAIRY CATTLE OR POULTRY HUSBANDRY ARE LOCATED WITHIN SIX HUNDRED TWENTY-FIVE (625) FEET OF THE CENTER OF THE WELL PAD.
 2. TOP HOLE DATA SHOWN HEREON WAS PROVIDED BY ALLEGHENY SURVEYS, INC.
 3. AS DRILLED DATA WAS PROVIDED BY ANTERO RESOURCES CORPORATION.
 4. WLS IS NOT CERTIFYING THE DATA AND INFORMATION PROVIDED LISTED IN NOTES 2 AND 3, ONLY THE RELATIONSHIP TO THE DATA AND INFORMATION PROVIDED TO THE LEASE BOUNDARIES.
 5. WLS IS BY NO MEANS RESPONSIBLE FOR ANY ERRORS OR INACCURACIES WITH THE DATA AND INFORMATION THAT HAS BEEN PROVIDED.



JOB # 13-067WA
DRAWING # FARROW3HAD
SCALE 1" = 1000'
MINIMUM DEGREE OF ACCURACY SUBMETER
PROVEN SOURCE OF ELEV. SUBMETER MAPPING GRADE GPS



STATE OF WEST VIRGINIA, DIVISION OF ENVIRONMENTAL PROTECTION, OFFICE OF OIL AND GAS
WILLOW LAND SURVEYING PLLC
220 MASONIC AVE. PENNSBORO WEST VIRGINIA 26415

LEGEND
--- Surface Owner Boundary Lines +/-
- - - Interior Surface Tracts +/-
X Existing Fence
⊕ Found monument, as noted
○ Proposed Well Path
⊗ As Drilled Well Path

DATE 05/22/15
OPERATOR'S WELL # FARROW UNIT #3H
API WELL # 47 - 017 - 06366
STATE COUNTY PERMIT
HEADWATERS OF MIDDLE ISLAND CREEK
DISTRICT NEW MILTON COUNTY DODDRIDGE
ACREAGE 70.088 ACRES +/-
LEASE ACREAGE 329.73 AC±; 206 AC±; 67 AC±;
80 AC±; 81 AC±; 5.9 AC±; 117.197 AC±
FRACTURE OR STIMULATE
CLEAN OUT & REPLUG
7,041' TVD 14,253' MD
DIANNA STAMPER
CT CORPORATION SYSTEM
5400 D BIG TYLER ROAD
CHARLESTON, WV 25313

STATE OF WEST VIRGINIA DEPARTMENT OF ENERGY DIVISION OF OIL AND GAS
WELL TYPE: OIL ___ GAS X LIQUID INJECTION ___ WASTE DISPOSAL ___
(IF "GAS") PRODUCTION X STORAGE ___ DEEP ___ SHALLOW X
LOCATION: ELEVATION 1,105' ORIGINAL - 1,096' AS DRILLED
QUADRANGLE NEW MILTON 7.5'
SURFACE OWNER JOHNNIE CLINE ET AL
OIL & GAS ROYALTY OWNER FRANK HINTER ET AL; DENVER COX ET UX; JOAN R. FARROW;
DENVER JUNIOR COX; GROVER JOHNSON ET UX; MILTON D. NICHOLSON; RUBY GENE DICKS
PROPOSED WORK: DRILL ___ CONVERT ___ DRILL DEEPER ___ REDRILL ___
PLUG OFF OLD FORMATION ___ PERFORATE NEW FORMATION ___ OTHER PHYSICAL CHANGE IN WELL
(SPECIFY) (X) AS DRILLED PLUG & ABANDON
TARGET FORMATION MARCELLUS ESTIMATED DEPTH
WELL OPERATOR ANTERO RESOURCES CORP. DESIGNATED AGENT
ADDRESS 1615 WYNKOOP STREET ADDRESS
DENVER, CO 80202