

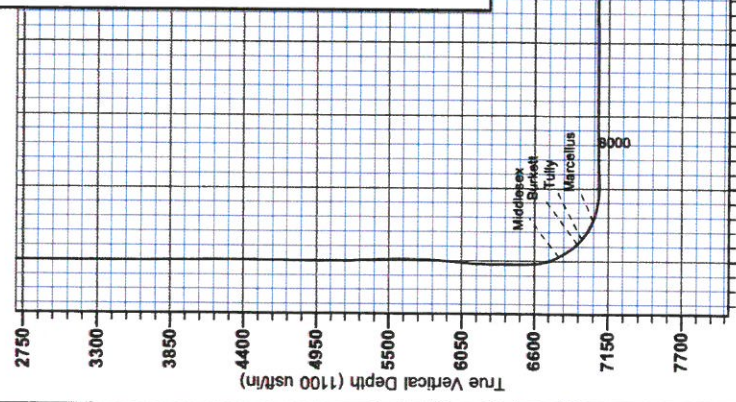
RECEIVED

JUN 26 2015

WV GEOLOGICAL SURVEY
MORGANTOWN, WV



Antero Resources
Farrow Unit 2H
Doddridge County WV
Northing: 14229712.11
Easting: 1725490.19
As Drilled



WELL DETAILS: Farrow Unit 2H
 Ground Level: 1098.0
 Easting: 1725490.19 Northing: 14229712.11 Longitude: 80° 41' 59.154 W Slat
 +N/S +E/W Northing Easting Longitude Slat
 0.0 0.0 14229712.11 1725490.19 80° 41' 59.154 W

REFERENCE INFORMATION
 Coordinates (NED) Reference: Well Name: Farrow Unit 2H, UTM Zone 18N
 Vertical (VD) Reference: Farrow Unit 2H, UTM Zone 18N
 Horizontal (HD) Reference: Farrow Unit 2H, UTM Zone 18N
 Measurement: Depth Reference: Farrow Unit 2H, UTM Zone 18N
 Calculation Method: Bitumen Conversion

PROJECT DETAILS: Doddridge County WV
 Geologic System: Universal Transverse Mercator (US Survey Feet)
 Datum: NAD 1983 (NAD83 CONUS)
 Zone: Zone 17N (84 W to 78 W)
 System Datum: Mean Sea Level

Genie Lightfoot
8:41, May 22 2014
Scientific Drilling
421 South Eagle Lane
Oklahoma City, OK



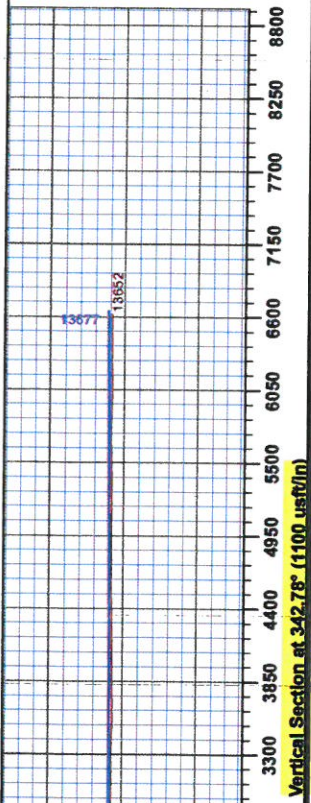
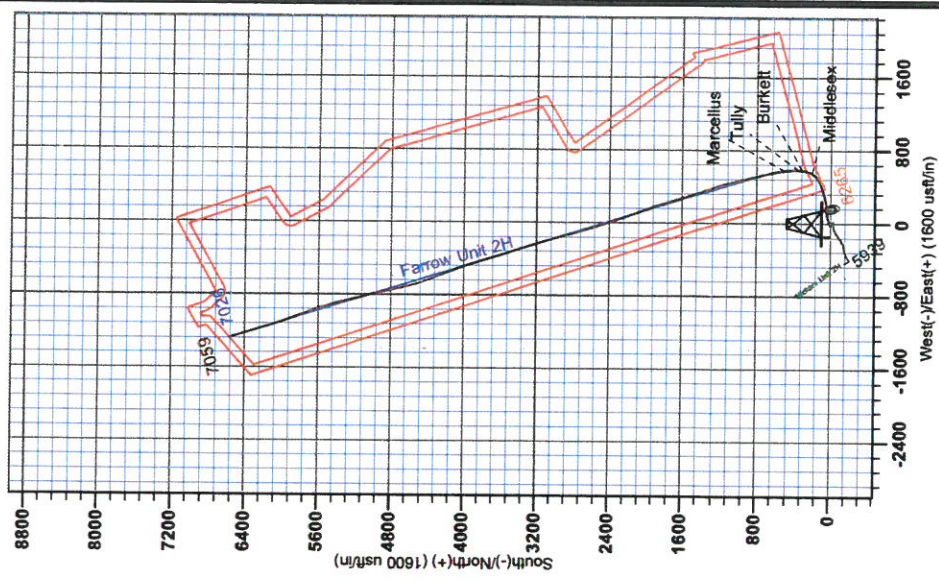
LEGEND
 -+ Nickers Unit 3H, Original Wellpath, As Drilled V0
 -□ Farrow Unit 2H, Original Wellpath, Plan 4 V0
 -→ Nickers Unit 2H, Original Wellpath, As Drilled V0
 -□ As Drilled

DESIGN TARGET DETAILS

Name	TVD	+N/S	+E/W	Northing	Easting	Latitude	Longitude
SHL Farrow Unit 2H	0.0	0.0	0.0	0.0	0.0	0.0	0.0
Actual BHL Farrow Unit 2H059.3	6539.1	6539.1	-1266.514236251.20	1724223.6789° 12' 13.417 N	80° 42' 14.973 W	11° 5' 19.800° 41' 59.154 W	1725490.18 39° 11' 5' 19.800° 41' 59.154 W

To convert Magnetic North to Grid, Subtract 8.88°
 To convert True North to Grid, Subtract 0.79°

Magnetic Field
 Strength: 52280.3anT
 Dip Angle: 66.77°
 Model: IGRF2010



RECEIVED

JUN 26 2015

WV GEOLOGICAL SURVEY
MORGANTOWN, WV



Antero Resources

Doddridge County WV

Cline Pad /Nickers/ Farrow/ Gearhart/Carr

Farrow Unit 2H

Original Wellpath

Design: As Drilled

EOW Completion Report

22 May, 2014



JUN 26 2015



EOW Completion Report



Company:	Antero Resources	Local Co-ordinate Reference:	Well Farrow Unit 2H
Project:	Doddridge County WV	TVD Reference:	Farrow Unit 2H GL 1096' + 24' RKB @ 1120.0usft
Site:	Cline Pad /Nickers/ Farrow/ Gearhart/Carr	MD Reference:	Farrow Unit 2H GL 1096' + 24' RKB @ 1120.0usft
Well:	Farrow Unit 2H	North Reference:	Grid
Wellbore:	Original Wellpath	Survey Calculation Method:	Minimum Curvature
Design:	As Drilled	Database:	Oklahoma District

Project	Doddridge County WV, McClellan District		
Map System:	Universal Transverse Mercator (US Survey Feet)	System Datum:	Mean Sea Level
Geo Datum:	NAD 1927 (NADCON CONUS)		
Map Zone:	Zone 17N (84 W to 78 W)		

Site	Cline Pad /Nickers/ Farrow/ Gearhart/Carr				
Site Position:		Northing:	14,229,675.44 usft	Latitude:	39° 11' 8.355 N
From:	Map	Easting:	1,725,508.24 usft	Longitude:	80° 41' 58.926 W
Position Uncertainty:	0.0 usft	Slot Radius:	13-3/16"	Grid Convergence:	0.19 °

Well	Farrow Unit 2H					
Well Position	+N/-S	0.0 usft	Northing:	14,229,712.11 usft	Latitude:	39° 11' 8.719 N
	+E/-W	0.0 usft	Easting:	1,725,490.19 usft	Longitude:	80° 41' 59.154 W
Position Uncertainty		2.8 usft	Wellhead Elevation:	1,120.0 usft	Ground Level:	1,096.0 usft

Wellbore	Original Wellpath
-----------------	-------------------

Magnetics	Model Name	Sample Date	Declination (°)	Dip Angle (°)	Field Strength (nT)
	IGRF2010	12/23/2013	-8.49	66.77	52,290

Design	As Drilled
---------------	------------

Audit Notes:	
Version:	1.0
Phase:	ACTUAL
Tie On Depth:	0.0

Vertical Section:	Depth From (TVD) (usft)	+N/-S (usft)	+E/-W (usft)	Direction (°)
	0.0	0.0	0.0	342.78

Survey Program	From (usft)	To (usft)	Date	Survey (Wellbore)	Tool Name	Description
	111.0	4,951.6	5/22/2014	Survey #4 Def Gyro (Original Wellpath)	SDI Standard Keeper	Scientific Drilling Intl. Standard Wireline Keeper
	4,900.0	6,525.1		Survey #6 Def Gyro to KOP (Original Well)	SDI Standard Keeper	Scientific Drilling Intl. Standard Wireline Keeper
	6,603.0	13,652.0		Survey #7 MWD (Original Wellpath)	SDI MWD	Scientific Drilling Intl. MWD - Standard ver 1.0.1

MD (usft)	Inc (°)	Azi (azimuth) (°)	TVD (usft)	N/S (usft)	E/W (usft)	V. Sec (usft)	DLeg (°/100usft)
0.0	0.00	0.00	0.0	0.0	0.0	0.0	0.00
111.0	0.66	200.82	111.0	-0.6	-0.2	-0.5	0.59
211.0	0.26	198.82	211.0	-1.4	-0.5	-1.1	0.40
311.0	0.15	230.38	311.0	-1.6	-0.7	-1.4	0.15
411.0	0.21	218.36	411.0	-1.9	-0.9	-1.5	0.07
511.0	0.19	220.05	511.0	-2.1	-1.1	-1.7	0.02
611.0	0.12	197.02	611.0	-2.4	-1.3	-1.9	0.09
711.0	0.15	203.97	711.0	-2.6	-1.3	-2.1	0.03
811.0	0.12	197.51	811.0	-2.8	-1.4	-2.3	0.03
911.0	0.12	205.71	911.0	-3.0	-1.5	-2.4	0.02

RECEIVED
JUN 26 2015



EOW Completion Report



Company: Antero Resources
Project: Doddridge County WV
Site: Cline Pad /Nickers/ Farrow/ Gearhart/Carr
Well: Farrow Unit 2H
Wellbore: Original Wellpath
Design: As Drilled

Local Co-ordinate Reference: Well Farrow Unit 2H
TVD Reference: Farrow Unit 2H GL 1096' + 24' RKB @ 1120.0usft
MD Reference: Farrow Unit 2H GL 1096' + 24' RKB @ 1120.0usft
North Reference: Grid
Survey Calculation Method: Minimum Curvature
Database: Oklahoma District

Survey

MD (usft)	Inc (°)	Azi (azimuth) (°)	TVD (usft)	N/S (usft)	E/W (usft)	V. Sec (usft)	DLeg (°/100usft)
1,011.0	0.14	188.20	1,011.0	-3.2	-1.6	-2.6	0.04
1,111.0	0.16	193.15	1,111.0	-3.5	-1.6	-2.8	0.02
1,211.0	0.13	238.81	1,211.0	-3.7	-1.7	-3.0	0.12
1,311.0	0.11	293.53	1,311.0	-3.7	-1.9	-3.0	0.11
1,411.0	0.11	307.15	1,411.0	-3.6	-2.1	-2.8	0.03
1,511.0	0.26	280.81	1,511.0	-3.5	-2.4	-2.6	0.17
1,611.0	0.17	275.78	1,611.0	-3.4	-2.8	-2.5	0.09
1,711.0	0.24	268.86	1,711.0	-3.4	-3.1	-2.4	0.07
1,811.0	0.14	246.02	1,811.0	-3.5	-3.4	-2.3	0.12
1,911.0	0.20	255.70	1,911.0	-3.6	-3.7	-2.3	0.07
2,011.0	0.03	83.45	2,011.0	-3.6	-3.9	-2.3	0.23
2,111.0	0.19	87.44	2,111.0	-3.6	-3.7	-2.4	0.16
2,211.0	0.19	99.92	2,211.0	-3.6	-3.3	-2.5	0.04
2,311.0	0.07	158.90	2,311.0	-3.7	-3.2	-2.6	0.17
2,411.0	0.19	50.36	2,411.0	-3.7	-3.0	-2.6	0.22
2,511.0	0.29	254.58	2,511.0	-3.6	-3.1	-2.5	0.47
2,611.0	0.14	264.42	2,611.0	-3.7	-3.5	-2.5	0.15
2,711.0	0.18	244.08	2,711.0	-3.8	-3.7	-2.5	0.07
2,811.0	0.33	295.94	2,811.0	-3.7	-4.1	-2.3	0.26
2,911.0	0.44	294.31	2,911.0	-3.4	-4.8	-1.9	0.11
3,011.0	0.40	273.86	3,011.0	-3.3	-5.5	-1.5	0.15
3,111.0	0.41	269.65	3,111.0	-3.2	-6.2	-1.3	0.03
3,211.0	0.26	274.24	3,211.0	-3.2	-6.7	-1.1	0.15
3,311.0	0.26	290.12	3,311.0	-3.1	-7.2	-0.9	0.07
3,411.0	0.38	280.50	3,411.0	-3.0	-7.7	-0.6	0.13
3,511.0	0.20	279.87	3,511.0	-2.9	-8.2	-0.3	0.18
3,611.0	0.22	325.66	3,611.0	-2.7	-8.5	-0.1	0.16
3,711.0	0.30	314.02	3,711.0	-2.4	-8.8	0.3	0.10
3,811.0	0.35	297.02	3,811.0	-2.1	-9.3	0.8	0.11
3,911.0	0.28	288.53	3,911.0	-1.8	-9.8	1.1	0.08
4,011.0	0.30	284.32	4,011.0	-1.7	-10.2	1.4	0.03
4,111.0	0.32	295.42	4,111.0	-1.5	-10.8	1.7	0.06
4,211.0	0.24	283.70	4,211.0	-1.3	-11.2	2.0	0.10
4,311.0	0.21	244.14	4,311.0	-1.4	-11.6	2.1	0.15
4,411.0	0.33	224.23	4,411.0	-1.7	-11.9	2.0	0.15
4,511.0	0.59	229.98	4,511.0	-2.2	-12.5	1.6	0.26
4,611.0	0.44	232.11	4,611.0	-2.8	-13.2	1.3	0.15
4,711.0	0.52	228.20	4,710.9	-3.3	-13.9	1.0	0.09
4,811.0	0.73	216.26	4,810.9	-4.1	-14.6	0.4	0.25
4,899.0	0.93	198.39	4,898.9	-5.2	-15.1	-0.5	0.37
4,900.0	0.95	196.63	4,899.9	-5.3	-15.2	-0.5	3.65
4,925.0	0.96	190.40	4,924.9	-5.7	-15.3	-0.9	0.42
5,025.0	0.89	186.63	5,024.9	-7.3	-15.5	-2.3	0.09
5,125.0	0.88	43.45	5,124.9	-7.5	-15.1	-2.7	1.68
5,225.0	3.94	44.31	5,224.8	-4.5	-12.1	-0.7	3.06

RECEIVED
JUN 26 2015



EOW Completion Report



Company: Antero Resources	Local Co-ordinate Reference: Well Farrow Unit 2H
Project: Doddridge County WV	TVD Reference: Farrow Unit 2H GL 1096' + 24' RKB @ 1120.0usft
Site: Cline Pad /Nickers/ Farrow/ Gearhart/Carr	MD Reference: Farrow Unit 2H GL 1096' + 24' RKB @ 1120.0usft
Well: Farrow Unit 2H	North Reference: Grid
Wellbore: Original Wellpath	Survey Calculation Method: Minimum Curvature
Design: As Drilled	Database: Oklahoma District

Survey

MD (usft)	Inc (°)	Azi (azimuth) (°)	TVD (usft)	N/S (usft)	E/W (usft)	V. Sec (usft)	DLeg (°/100usft)
5,325.0	6.71	50.57	5,324.4	1.7	-5.2	3.2	2.83
5,425.0	8.90	56.64	5,423.4	9.7	5.8	7.5	2.34
5,525.0	10.91	65.16	5,522.0	17.9	20.8	10.9	2.48
5,625.0	13.06	73.69	5,619.8	25.1	40.3	12.0	2.78
5,725.0	15.02	80.90	5,716.8	30.3	63.9	10.0	2.62
5,825.0	17.67	81.38	5,812.7	34.6	91.7	5.9	2.65
5,925.0	20.30	85.52	5,907.3	38.2	124.0	-0.2	2.95
6,025.0	22.67	86.06	6,000.3	40.9	160.5	-8.4	2.38
6,125.0	25.13	82.17	6,091.8	45.1	200.8	-16.3	2.92
6,225.0	27.40	77.10	6,181.4	53.2	244.3	-21.5	3.19
6,325.0	27.53	74.40	6,270.2	64.5	289.0	-23.9	1.25
6,425.0	27.28	73.82	6,359.0	77.1	333.2	-25.0	0.37
6,525.0	27.82	71.98	6,447.6	90.7	377.4	-25.1	1.01
6,525.1	27.81	71.97	6,447.7	90.7	377.5	-25.1	10.03
6,603.0	26.99	69.79	6,516.9	102.5	411.3	-23.9	1.66
6,634.0	26.47	69.85	6,544.6	107.3	424.4	-23.2	1.68
6,666.0	29.11	69.10	6,572.9	112.5	438.4	-22.3	8.32
6,697.0	32.91	68.94	6,599.4	118.2	453.3	-21.3	12.26
6,728.0	35.56	64.26	6,625.1	125.2	469.3	-19.4	12.05
6,760.0	35.87	57.06	6,651.1	134.3	485.6	-15.4	13.16
6,791.0	35.74	51.30	6,676.2	144.9	500.2	-9.7	10.88
6,822.0	36.07	45.73	6,701.3	157.0	513.9	-2.2	10.59
6,854.0	36.72	40.69	6,727.1	170.8	526.8	7.2	9.56
6,885.0	37.68	35.43	6,751.8	185.5	538.4	17.8	10.71
6,916.0	37.83	30.95	6,776.3	201.4	548.8	29.9	8.86
6,926.0	37.65	29.47	6,784.2	206.7	551.8	34.1	9.27
Middlesex							
6,948.0	37.31	26.16	6,801.7	218.5	558.1	43.5	9.27
6,979.0	36.96	20.51	6,826.4	235.7	565.5	57.7	11.06
7,010.0	37.42	14.72	6,851.1	253.6	571.2	73.1	11.38
7,042.0	39.56	10.55	6,876.1	273.0	575.5	90.4	10.51
7,073.0	42.55	7.43	6,899.5	293.1	578.7	108.6	11.69
7,104.0	46.35	4.01	6,921.6	314.7	580.8	128.6	14.49
7,106.0	46.60	3.91	6,923.0	316.1	580.9	130.0	12.86
Burkett							
7,136.0	50.30	2.47	6,942.9	338.5	582.1	151.0	12.86
7,156.0	52.58	1.88	6,955.4	354.2	582.7	165.8	11.61
Tully							
7,167.0	53.83	1.57	6,962.0	363.0	583.0	174.1	11.61
7,199.0	57.16	359.41	6,980.1	389.3	583.2	199.2	11.80
7,230.0	59.88	357.81	6,996.3	415.8	582.6	224.7	9.82
7,261.0	62.18	355.99	7,011.3	442.8	581.1	251.0	9.02
7,293.0	64.39	354.76	7,025.7	471.3	578.8	278.8	7.71
7,323.0	67.39	353.60	7,037.9	498.6	576.0	305.7	10.61
Marcellus							

JUN 26 2015



EOW Completion Report



Company: Antero Resources
Project: Doddridge County WV
Site: Cline Pad /Nickers/ Farrow/ Gearhart/Carr
Well: Farrow Unit 2H
Wellbore: Original Wellpath
Design: As Drilled

Local Co-ordinate Reference: Well Farrow Unit 2H
TVD Reference: Farrow Unit 2H GL 1096' + 24' RKB @ 1120.0usft
MD Reference: Farrow Unit 2H GL 1096' + 24' RKB @ 1120.0usft
North Reference: Grid
Survey Calculation Method: Minimum Curvature
Database: Oklahoma District

Survey

MD (usft)	Inc (°)	Azi (azimuth) (°)	TVD (usft)	N/S (usft)	E/W (usft)	V. Sec (usft)	DLeg (°/100usft)
7,324.0	67.49	353.56	7,038.3	499.5	575.9	306.6	10.61
7,355.0	70.74	352.50	7,049.4	528.2	572.4	335.1	10.96
7,387.0	74.73	349.80	7,058.9	558.4	567.7	365.3	14.84
7,418.0	76.73	349.04	7,066.5	587.9	562.2	395.2	6.88
7,449.0	78.18	348.60	7,073.2	617.6	556.3	425.2	4.88
7,481.0	80.78	348.26	7,079.1	648.4	550.0	456.6	8.19
7,510.0	85.08	348.47	7,082.7	676.6	544.2	485.2	14.84
7,604.0	89.19	346.79	7,087.3	768.3	524.1	578.7	4.72
7,699.0	92.95	347.31	7,085.6	860.9	502.8	673.4	4.00
7,793.0	92.52	346.39	7,081.1	952.3	481.4	767.1	1.08
7,887.0	90.44	345.05	7,078.7	1,043.3	458.2	860.9	2.63
7,981.0	90.23	343.53	7,078.1	1,133.8	432.8	954.9	1.63
8,075.0	90.43	342.17	7,077.6	1,223.6	405.1	1,048.9	1.46
8,169.0	89.93	339.69	7,077.3	1,312.5	374.4	1,142.8	2.69
8,263.0	90.10	339.30	7,077.3	1,400.5	341.4	1,236.7	0.45
8,357.0	89.83	341.36	7,077.3	1,489.0	309.8	1,330.6	2.21
8,451.0	89.90	344.23	7,077.5	1,578.8	282.0	1,424.6	3.05
8,545.0	89.56	341.45	7,078.0	1,668.6	254.3	1,518.5	2.98
8,640.0	89.97	342.27	7,078.4	1,758.9	224.7	1,613.5	0.97
8,734.0	90.98	343.45	7,077.6	1,848.7	197.0	1,707.5	1.65
8,828.0	90.97	341.35	7,076.0	1,938.3	168.6	1,801.5	2.23
8,922.0	89.77	339.38	7,075.4	2,026.8	137.0	1,895.4	2.45
9,016.0	89.13	338.24	7,076.3	2,114.5	103.0	1,989.2	1.39
9,110.0	91.55	340.80	7,075.7	2,202.5	70.1	2,083.0	3.75
9,204.0	91.91	341.62	7,072.9	2,291.5	39.9	2,176.9	0.95
9,298.0	90.37	341.60	7,071.0	2,380.6	10.2	2,270.9	1.64
9,393.0	90.30	341.58	7,070.5	2,470.8	-19.8	2,365.9	0.08
9,487.0	89.97	342.29	7,070.2	2,560.1	-48.9	2,459.9	0.83
9,581.0	89.77	343.68	7,070.5	2,650.0	-76.4	2,553.9	1.49
9,676.0	89.87	343.48	7,070.7	2,741.1	-103.3	2,648.8	0.24
9,770.0	91.64	345.50	7,069.5	2,831.7	-128.4	2,742.8	2.86
9,864.0	88.79	344.70	7,069.2	2,922.5	-152.6	2,836.7	3.15
9,958.0	87.20	343.53	7,072.4	3,012.9	-178.3	2,930.6	2.10
10,049.0	90.64	343.85	7,074.2	3,100.2	-203.8	3,021.6	3.80
10,140.0	88.93	340.63	7,074.5	3,186.8	-231.6	3,112.6	4.01
10,231.0	91.48	344.07	7,074.2	3,273.5	-259.2	3,203.5	4.71
10,323.0	91.45	343.58	7,071.8	3,361.9	-284.8	3,295.5	0.53
10,413.0	87.55	340.75	7,072.6	3,447.5	-312.4	3,385.4	5.35
10,504.0	88.33	341.60	7,075.9	3,533.6	-341.7	3,476.3	1.27
10,595.0	90.54	343.15	7,076.8	3,620.3	-369.3	3,567.3	2.97
10,687.0	89.77	343.36	7,076.5	3,708.4	-395.8	3,659.3	0.87
10,778.0	90.80	343.65	7,076.1	3,795.7	-421.6	3,750.3	1.18
10,869.0	90.13	341.99	7,075.3	3,882.6	-448.5	3,841.3	1.97
10,959.0	90.24	341.27	7,075.0	3,968.0	-476.8	3,931.3	0.81



RECEIVED

JUN 26 2015

EOW Completion Report



Company: Antero Resources
 Project: Doddridge County WV
 Site: Cline Pad /Nickers/ Farrow/ Gearhart/Carr
 Well: Farrow Unit 2H
 Wellbore: Original Wellpath
 Design: As Drilled

Local Co-ordinate Reference: Well Farrow Unit 2H
 TVD Reference: Farrow Unit 2H GL 1096' + 24' RKB @ 1120.0usft
 MD Reference: Farrow Unit 2H GL 1096' + 24' RKB @ 1120.0usft
 North Reference: Grid
 Survey Calculation Method: Minimum Curvature
 Database: Oklahoma District

Survey

MD (usft)	Inc (°)	Azi (azimuth) (°)	TVD (usft)	N/S (usft)	EW (usft)	V. Sec (usft)	DLeg (°/100usft)
11,051.0	91.35	340.71	7,073.8	4,055.0	-506.8	4,023.2	1.35
11,146.0	91.54	340.72	7,071.4	4,144.6	-538.2	4,118.1	0.20
11,240.0	90.20	337.81	7,069.9	4,232.5	-571.4	4,211.9	3.41
11,334.0	90.54	339.32	7,069.3	4,320.0	-605.8	4,305.7	1.65
11,428.0	90.77	339.90	7,068.3	4,408.1	-638.5	4,399.5	0.66
11,523.0	92.32	342.67	7,065.7	4,498.0	-669.0	4,494.5	3.34
11,617.0	89.90	345.08	7,063.9	4,588.3	-695.1	4,588.4	3.63
11,710.0	89.56	345.38	7,064.3	4,678.2	-718.8	4,681.3	0.49
11,805.0	90.13	347.43	7,064.6	4,770.6	-741.1	4,776.1	2.24
11,899.0	90.50	345.86	7,064.1	4,862.0	-762.8	4,869.9	1.72
11,993.0	90.60	348.19	7,063.2	4,953.6	-784.0	4,963.6	2.48
12,087.0	90.57	346.98	7,062.2	5,045.4	-804.2	5,057.3	1.29
12,181.0	90.07	345.71	7,061.7	5,136.7	-826.3	5,151.1	1.45
12,275.0	88.38	346.28	7,062.9	5,227.9	-849.1	5,245.0	1.90
12,370.0	91.54	346.12	7,063.0	5,320.2	-871.8	5,339.8	3.33
12,464.0	91.48	344.47	7,060.5	5,411.1	-895.6	5,433.6	1.76
12,557.0	90.87	343.31	7,058.6	5,500.4	-921.4	5,526.6	1.41
12,651.0	90.84	341.96	7,057.2	5,590.1	-949.5	5,620.6	1.44
12,745.0	90.60	341.69	7,056.0	5,679.4	-978.8	5,714.6	0.38
12,839.0	88.12	338.47	7,057.1	5,767.7	-1,010.8	5,808.4	4.32
12,934.0	88.83	338.93	7,059.6	5,856.2	-1,045.3	5,903.2	0.89
13,028.0	90.23	340.49	7,060.4	5,944.4	-1,077.9	5,997.0	2.23
13,122.0	90.37	341.16	7,059.9	6,033.2	-1,108.8	6,091.0	0.73
13,216.0	90.27	341.77	7,059.4	6,122.3	-1,138.6	6,184.9	0.66
13,310.0	90.81	342.67	7,058.5	6,211.8	-1,167.3	6,278.9	1.12
13,404.0	89.70	343.68	7,058.1	6,301.8	-1,194.5	6,372.9	1.60
13,498.0	89.50	343.23	7,058.7	6,391.9	-1,221.3	6,466.9	0.52
13,592.0	89.90	342.80	7,059.2	6,481.8	-1,248.8	6,560.9	0.62
13,652.0	90.00	342.80	7,059.3	6,539.1	-1,266.5	6,620.9	0.17

Design Annotations

Measured Depth (usft)	Vertical Depth (usft)	Local Coordinates		Comment
		+N/S (usft)	+E/W (usft)	
6,926.0	6,784.2	206.7	551.8	Middlesex
7,106.0	6,923.0	316.1	580.9	Burkett
7,156.0	6,955.4	354.2	582.7	Tully
7,323.0	7,037.9	498.6	576.0	Marcellus

Checked By: _____ Approved By: _____ Date: _____