

RECEIVED

JUN 26 2015

WV GEOLOGICAL SURVEY  
MORGANTOWN, WV



**Gearhart Unit 2H**  
Doddridge County WV  
Northing: 14229736.87  
Easting: 1725474.22  
As Drilled



Azimuths to Grid North  
True North: -0.19°  
Magnetic North: -8.68°  
Magnetic Field  
Strength: 52282.7 nT  
Dip Angle: 66.76°  
Date: 11/15/2014  
Model: IGRF2010

To convert Magnetic North to Grid, Subtract 8.68°  
To convert True North to Grid, Subtract 0.19°

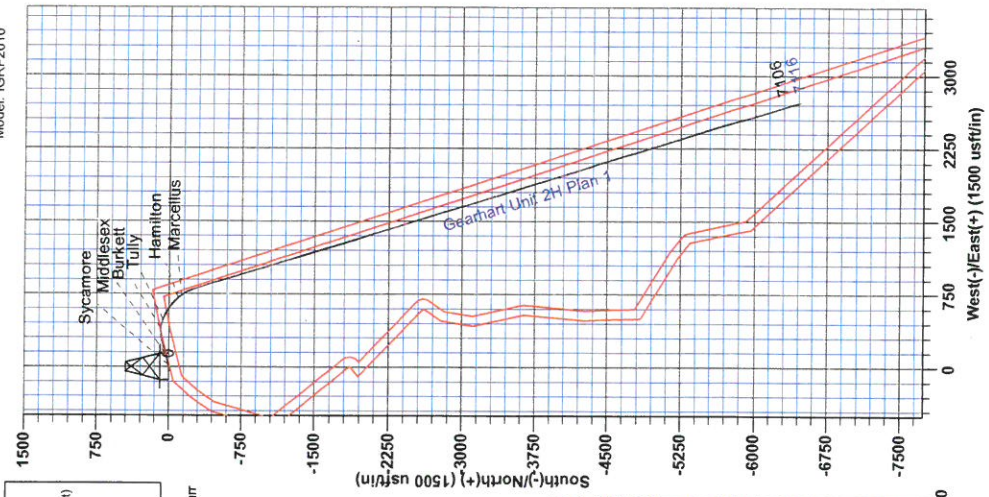
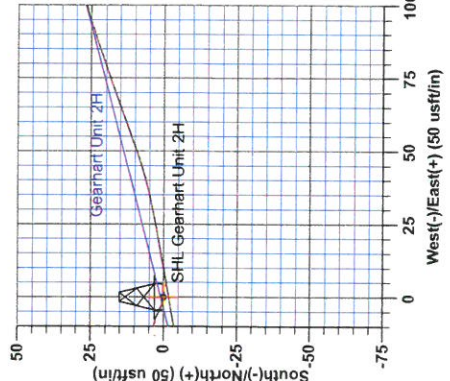
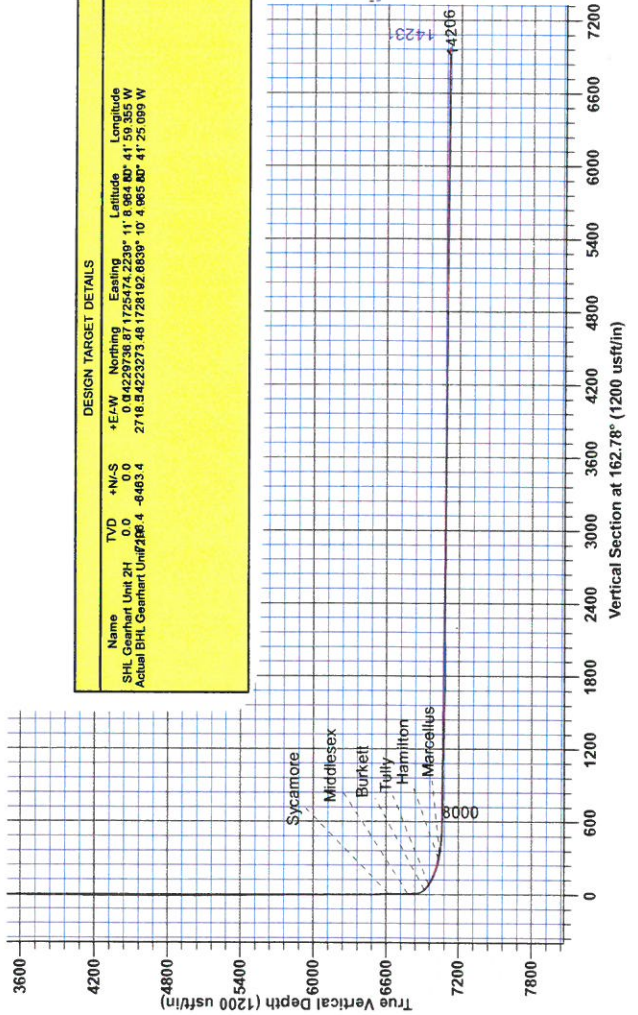
+N/-S		+E/W		Northing		Easting		Gearhart Unit 2H	
0.0	0.0	0.0	0.0	14229736.87	1725474.22	39° 11' 8.964" N	80° 41' 59.355" W	1096.0	Ground Level

**PROJECT DETAILS:** Doddridge County WV  
Geodetic System: Universal Transverse Mercator (US Survey Feet)  
Datum: NAD 1927 (NADCON CONUS)  
Ellipsoid: Clarke 1866  
Zone: Zone 17N (84 W to 78 W)  
System Datum: Mean Sea Level

**LEGEND**  
 Gearhart Unit 2H, Original Wellpath, Plan 2 Post Gyro V0  
 As Drilled

**SITE DETAILS:** Cline Pad /Nickers/ Farrow/ Gearhart/Carr  
Site Center: Nickers 2H  
Site Centre Northing: 14228675.44  
Easting: 1725806.24  
Positional Uncertainty: 0.0  
Convergence: 0.19  
Local North: Grid

DESIGN TARGET DETAILS							
Name	TVD	+N/-S	+E/W	Northing	Easting	Latitude	Longitude
S-HL Gearhart Unit 2H	0.0	0.0	0.0	14229736.87	1725474.22	39° 11' 8.964" N	80° 41' 59.355" W
Actual SHL Gearhart Unit 2H	0.0	0.0	0.0	14229736.87	1725474.22	39° 11' 8.964" N	80° 41' 59.355" W



Gearhart Unit 2H 100% GL = 2.4' RKB @ 1120.0usft  
GT: 1688.0

Genie Lightfoot  
8:49, April 10 2014  
Scientific Drilling  
421 South E. Collins  
Oklahoma City, OK 73128



RECEIVED  
JUN 26 2015  
WV GEOLOGICAL SURVEY  
MORGANTOWN, WV

## **Antero Resources**

**Doddridge County WV  
Cline Pad /Nickers/ Farrow/ Gearhart/Carr  
Gearhart Unit 2H  
Original Wellpath**

**Design: As Drilled**

## **EOW Completion Report**

**10 April, 2014**



RECEIVED

JUN 26 2015



EOW Completion Report



<b>Company:</b>	Antero Resources	<b>Local Co-ordinate Reference:</b>	Well Gearhart Unit 2H
<b>Project:</b>	Doddridge County WV	<b>TVD Reference:</b>	Gearhart Unit 2H 1096' GL + 24' RKB @ 1120.0usf
<b>Site:</b>	Cline Pad /Nickers/ Farrow/ Gearhart/Carr	<b>MD Reference:</b>	Gearhart Unit 2H 1096' GL + 24' RKB @ 1120.0usf
<b>Well:</b>	Gearhart Unit 2H	<b>North Reference:</b>	Grid
<b>Wellbore:</b>	Original Wellpath	<b>Survey Calculation Method:</b>	Minimum Curvature
<b>Design:</b>	As Drilled	<b>Database:</b>	Oklahoma District

<b>Project</b>	Doddridge County WV, McClellan District		
<b>Map System:</b>	Universal Transverse Mercator (US Survey Fee	<b>System Datum:</b>	Mean Sea Level
<b>Geo Datum:</b>	NAD 1927 (NADCON CONUS)		
<b>Map Zone:</b>	Zone 17N (84 W to 78 W)		

<b>Site</b>	Cline Pad /Nickers/ Farrow/ Gearhart/Carr				
<b>Site Position:</b>		<b>Northing:</b>	14,229,675.44 usft	<b>Latitude:</b>	39° 11' 8.355 N
<b>From:</b>	Map	<b>Easting:</b>	1,725,508.24 usft	<b>Longitude:</b>	80° 41' 58.926 W
<b>Position Uncertainty:</b>	0.0 usft	<b>Slot Radius:</b>	13-3/16"	<b>Grid Convergence:</b>	0.19 °

<b>Well</b>	Gearhart Unit 2H, Marcellus					
<b>Well Position</b>	<b>+N/-S</b>	0.0 usft	<b>Northing:</b>	14,229,736.87 usft	<b>Latitude:</b>	39° 11' 8.964 N
	<b>+E/-W</b>	0.0 usft	<b>Easting:</b>	1,725,474.22 usft	<b>Longitude:</b>	80° 41' 59.355 W
<b>Position Uncertainty</b>	2.0 usft		<b>Wellhead Elevation:</b>	1,109.0 usft	<b>Ground Level:</b>	1,096.0 usft

<b>Wellbore</b>	Original Wellpath
-----------------	-------------------

Magnetics	Model Name	Sample Date	Declination (°)	Dip Angle (°)	Field Strength (nT)
	IGRF2010	1/15/2014	-8.49	66.76	52,283

<b>Design</b>	As Drilled
---------------	------------

<b>Audit Notes:</b>	
<b>Version:</b>	1.0
<b>Phase:</b>	ACTUAL
<b>Tie On Depth:</b>	0.0

Vertical Section:	Depth From (TVD) (usft)	+N/-S (usft)	+E/-W (usft)	Direction (°)
	0.0	0.0	0.0	162.78

Survey Program	From (usft)	To (usft)	Date	Survey (Wellbore)	Tool Name	Description
	61.0	2,540.8	4/10/2014	Survey #2 Def Gyro to Int (Original Wellpa	SDI Standard Keeper	Scientific Drilling Intl. Standard Wireline Keeper
	2,611.0	6,286.1		Survey #4 Final Gyro (Original Wellpath)	SDI Standard Keeper	Scientific Drilling Intl. Standard Wireline Keeper
	6,297.1	14,206.0		Survey #5 SDI MWD (Original Wellpath)	MWD SDI	MWD - Standard ver 1.0.1

MD (usft)	Inc (°)	Azi (azimuth) (°)	TVD (usft)	N/S (usft)	E/W (usft)	V. Sec (usft)	DLeg (°/100usft)
0.0	0.00	0.00	0.00	0.0	0.0	0.0	0.00
61.0	0.37	274.66	61.0	0.0	-0.2	-0.1	0.61
111.0	0.74	274.66	111.0	0.1	-0.7	-0.3	0.74
161.0	0.78	280.20	161.0	0.1	-1.3	-0.5	0.17
211.0	0.72	278.88	211.0	0.3	-2.0	-0.8	0.12
261.0	0.51	305.90	261.0	0.4	-2.5	-1.1	0.71
311.0	0.39	297.53	311.0	0.6	-2.8	-1.4	0.27
361.0	0.47	291.25	361.0	0.8	-3.1	-1.7	0.19
411.0	0.47	285.41	411.0	0.9	-3.5	-1.9	0.10
461.0	0.58	287.82	461.0	1.1	-4.0	-2.2	0.22

# RECEIVED

JUN 26 2015



## EOW Completion Report



<b>Company:</b>	Antero Resources	<b>Local Co-ordinate Reference:</b>	Well Gearhart Unit 2H
<b>Project:</b>	Doddridge County WV	<b>TVD Reference:</b>	Gearhart Unit 2H 1096' GL + 24' RKB @ 1120.0us
<b>Site:</b>	Cline Pad /Nickers/ Farrow/ Gearhart/Carr	<b>MD Reference:</b>	Gearhart Unit 2H 1096' GL + 24' RKB @ 1120.0us
<b>Well:</b>	Gearhart Unit 2H	<b>North Reference:</b>	Grid
<b>Wellbore:</b>	Original Wellpath	<b>Survey Calculation Method:</b>	Minimum Curvature
<b>Design:</b>	As Drilled	<b>Database:</b>	Oklahoma District

### Survey

MD (usft)	Inc (°)	Azi (azimuth) (°)	TVD (usft)	N/S (usft)	E/W (usft)	V. Sec (usft)	DLeg (°/100usft)
511.0	0.59	299.23	511.0	1.3	-4.4	-2.5	0.23
561.0	0.45	299.14	561.0	1.5	-4.8	-2.8	0.28
611.0	0.43	287.98	611.0	1.6	-5.2	-3.1	0.18
661.0	0.57	290.79	661.0	1.8	-5.6	-3.4	0.28
711.0	0.61	303.76	711.0	2.0	-6.0	-3.7	0.28
761.0	0.42	299.80	761.0	2.3	-6.4	-4.1	0.39
811.0	0.38	296.69	811.0	2.4	-6.7	-4.3	0.09
861.0	0.42	289.18	861.0	2.6	-7.1	-4.5	0.13
911.0	0.38	277.34	911.0	2.6	-7.4	-4.7	0.18
961.0	0.51	278.19	961.0	2.7	-7.8	-4.9	0.26
1,011.0	0.43	289.06	1,011.0	2.8	-8.2	-5.1	0.24
1,061.0	0.36	301.39	1,061.0	2.9	-8.5	-5.3	0.22
1,111.0	0.30	264.62	1,111.0	3.0	-8.8	-5.4	0.43
1,161.0	0.37	282.70	1,161.0	3.0	-9.0	-5.6	0.25
1,211.0	0.29	290.94	1,211.0	3.1	-9.3	-5.7	0.19
1,261.0	0.40	265.85	1,261.0	3.1	-9.6	-5.8	0.37
1,311.0	0.41	282.76	1,311.0	3.2	-10.0	-6.0	0.24
1,361.0	0.38	276.54	1,361.0	3.2	-10.3	-6.1	0.10
1,411.0	0.46	289.08	1,411.0	3.3	-10.7	-6.3	0.24
1,461.0	0.37	293.77	1,460.9	3.4	-11.0	-6.5	0.19
1,511.0	0.34	304.94	1,510.9	3.6	-11.3	-6.8	0.15
1,561.0	0.24	288.52	1,560.9	3.7	-11.5	-6.9	0.26
1,611.0	0.25	266.26	1,610.9	3.7	-11.7	-7.0	0.19
1,661.0	0.37	238.28	1,660.9	3.6	-11.9	-7.0	0.38
1,711.0	0.29	273.43	1,710.9	3.6	-12.2	-7.0	0.43
1,761.0	0.27	267.15	1,760.9	3.6	-12.4	-7.1	0.07
1,811.0	0.21	233.32	1,810.9	3.5	-12.6	-7.1	0.30
1,861.0	0.30	246.88	1,860.9	3.4	-12.8	-7.0	0.22
1,911.0	0.15	260.31	1,910.9	3.3	-13.0	-7.0	0.32
1,961.0	0.15	196.64	1,960.9	3.3	-13.1	-7.0	0.32
2,011.0	0.15	206.08	2,010.9	3.1	-13.1	-6.9	0.05
2,061.0	0.20	229.11	2,060.9	3.0	-13.2	-6.8	0.17
2,111.0	0.09	169.66	2,110.9	2.9	-13.3	-6.7	0.35
2,161.0	0.27	183.28	2,160.9	2.8	-13.3	-6.6	0.37
2,211.0	0.28	223.51	2,210.9	2.6	-13.4	-6.4	0.38
2,261.0	0.10	212.43	2,260.9	2.4	-13.5	-6.3	0.37
2,311.0	0.31	253.83	2,310.9	2.4	-13.6	-6.3	0.49
2,361.0	0.31	173.55	2,360.9	2.2	-13.8	-6.2	0.80
2,411.0	0.17	246.55	2,410.9	2.0	-13.8	-6.0	0.61
2,461.0	0.15	248.00	2,460.9	2.0	-13.9	-6.0	0.04
2,511.0	0.31	219.02	2,510.9	1.8	-14.1	-5.9	0.39
2,540.8	0.31	265.31	2,540.8	1.8	-14.2	-5.9	0.82
2,611.0	0.27	254.77	2,610.9	1.7	-14.6	-5.9	0.09
2,711.0	0.33	263.56	2,710.9	1.6	-15.1	-6.0	0.08
2,811.0	0.44	272.21	2,810.9	1.6	-15.8	-6.2	0.12

RECEIVED

JUN 26 2015



GEOLOGICAL SURVEY  
MORGANTOWN, WV

EOW Completion Report



<b>Company:</b>	Antero Resources	<b>Local Co-ordinate Reference:</b>	Well Gearhart Unit 2H
<b>Project:</b>	Doddridge County WV	<b>TVD Reference:</b>	Gearhart Unit 2H 1096' GL + 24' RKB @ 1120.0us
<b>Site:</b>	Cline Pad /Nickers/ Farrow/ Gearhart/Carr	<b>MD Reference:</b>	Gearhart Unit 2H 1096' GL + 24' RKB @ 1120.0us
<b>Well:</b>	Gearhart Unit 2H	<b>North Reference:</b>	Grid
<b>Wellbore:</b>	Original Wellpath	<b>Survey Calculation Method:</b>	Minimum Curvature
<b>Design:</b>	As Drilled	<b>Database:</b>	Oklahoma District

Survey

MD (usft)	Inc (°)	Azi (azimuth) (°)	TVD (usft)	N/S (usft)	E/W (usft)	V. Sec (usft)	DLeg (°/100usft)
2,911.0	0.66	282.28	2,910.9	1.7	-16.7	-6.6	0.24
3,011.0	0.59	280.82	3,010.9	2.0	-17.8	-7.1	0.07
3,111.0	0.53	277.84	3,110.9	2.1	-18.7	-7.6	0.07
3,211.0	0.62	281.17	3,210.9	2.3	-19.7	-8.0	0.10
3,311.0	0.49	280.28	3,310.9	2.5	-20.7	-8.5	0.13
3,411.0	0.50	284.24	3,410.9	2.6	-21.5	-8.9	0.04
3,511.0	0.46	289.62	3,510.9	2.9	-22.3	-9.4	0.06
3,611.0	0.44	291.29	3,610.9	3.2	-23.1	-9.8	0.02
3,711.0	0.57	287.91	3,710.9	3.5	-23.9	-10.4	0.13
3,811.0	0.49	291.51	3,810.9	3.8	-24.8	-10.9	0.09
3,911.0	0.46	285.80	3,910.9	4.0	-25.5	-11.4	0.06
4,011.0	0.39	289.11	4,010.9	4.3	-26.2	-11.8	0.07
4,111.0	0.43	294.93	4,110.9	4.5	-26.9	-12.3	0.06
4,211.0	0.40	288.79	4,210.9	4.8	-27.6	-12.7	0.05
4,311.0	0.32	268.75	4,310.9	4.9	-28.2	-13.0	0.15
4,411.0	0.41	281.92	4,410.9	5.0	-28.8	-13.3	0.12
4,511.0	0.47	272.68	4,510.9	5.1	-29.6	-13.6	0.09
4,611.0	0.48	280.05	4,610.9	5.2	-30.4	-13.9	0.06
4,711.0	0.42	270.61	4,710.9	5.2	-31.2	-14.2	0.10
4,811.0	0.46	247.85	4,810.9	5.1	-31.9	-14.3	0.18
4,911.0	0.50	217.94	4,910.9	4.6	-32.6	-14.0	0.25
5,011.0	0.60	199.14	5,010.9	3.7	-33.0	-13.3	0.20
5,111.0	0.60	206.89	5,110.9	2.8	-33.4	-12.5	0.08
5,211.0	0.54	209.66	5,210.8	1.9	-33.9	-11.9	0.07
5,311.0	0.55	209.94	5,310.8	1.1	-34.3	-11.2	0.01
5,411.0	0.55	221.62	5,410.8	0.3	-34.9	-10.6	0.11
5,511.0	0.64	226.82	5,510.8	-0.4	-35.6	-10.1	0.10
5,611.0	0.54	187.54	5,610.8	-1.3	-36.1	-9.5	0.41
5,711.0	0.67	176.75	5,710.8	-2.3	-36.1	-8.5	0.17
5,811.0	0.73	175.98	5,810.8	-3.6	-36.1	-7.3	0.06
5,911.0	0.61	183.04	5,910.8	-4.7	-36.0	-6.2	0.15
6,011.0	0.52	210.55	6,010.8	-5.6	-36.3	-5.4	0.28
6,111.0	0.43	219.09	6,110.8	-6.3	-36.8	-4.8	0.11
6,211.0	0.49	228.06	6,210.8	-6.9	-37.3	-4.5	0.09
6,286.1	0.49	218.69	6,285.9	-7.4	-37.8	-4.1	0.11
6,354.0	0.66	235.85	6,353.8	-7.8	-38.3	-3.9	0.35
6,385.0	0.66	241.30	6,384.8	-8.0	-38.6	-3.8	0.20
6,414.0	1.26	95.92	6,413.8	-8.1	-38.4	-3.6	6.35
6,448.0	6.26	84.99	6,447.7	-8.0	-36.2	-3.1	14.79
6,480.0	10.90	80.55	6,479.3	-7.3	-31.5	-2.3	14.64
6,508.0	14.36	79.82	6,506.7	-6.3	-25.4	-1.5	12.37
6,542.0	18.14	80.31	6,539.3	-4.7	-16.0	-0.3	11.12
6,574.0	21.32	79.85	6,569.4	-2.8	-5.4	1.1	9.95
6,602.0	23.85	79.79	6,595.3	-0.9	5.2	2.4	9.04

# RECEIVED

JUN 26 2015



GEOLOGICAL SURVEY  
MORGANTOWN, WV

## EOW Completion Report



<b>Company:</b>	Antero Resources	<b>Local Co-ordinate Reference:</b>	Well Gearhart Unit 2H
<b>Project:</b>	Doddridge County WV	<b>TVD Reference:</b>	Gearhart Unit 2H 1096' GL + 24' RKB @ 1120.0us
<b>Site:</b>	Cline Pad /Nickers/ Farrow/ Gearhart/Carr	<b>MD Reference:</b>	Gearhart Unit 2H 1096' GL + 24' RKB @ 1120.0us
<b>Well:</b>	Gearhart Unit 2H	<b>North Reference:</b>	Grid
<b>Wellbore:</b>	Original Wellpath	<b>Survey Calculation Method:</b>	Minimum Curvature
<b>Design:</b>	As Drilled	<b>Database:</b>	Oklahoma District

### Survey

MD (usft)	Inc (°)	Azi (azimuth) (°)	TVD (usft)	N/S (usft)	E/W (usft)	V. Sec (usft)	DLeg (°/100usft)
6,632.0	26.66	79.74	6,622.4	1.4	17.8	3.9	9.38
<b>Sycamore</b>							
6,636.0	27.04	79.73	6,626.0	1.7	19.5	4.2	9.38
6,668.0	30.08	77.52	6,654.1	4.7	34.5	5.7	10.06
6,696.0	32.83	70.67	6,678.0	8.8	48.6	6.0	16.09
6,730.0	35.96	69.54	6,706.0	15.3	66.6	5.1	9.40
6,762.0	39.24	71.55	6,731.4	21.8	85.0	4.3	10.94
6,790.0	43.65	73.10	6,752.3	27.4	102.7	4.2	16.17
6,825.0	48.36	73.43	6,776.6	34.7	126.8	4.4	13.47
6,835.0	49.67	73.76	6,783.2	36.8	134.0	4.5	13.32
<b>Middlesex</b>							
6,856.0	52.42	74.40	6,796.4	41.3	149.7	4.9	13.32
6,885.0	55.93	75.12	6,813.4	47.4	172.4	5.7	12.27
6,919.0	59.26	75.56	6,831.6	54.7	200.2	7.0	9.85
6,951.0	62.86	76.04	6,847.1	61.6	227.3	8.5	11.33
6,979.0	64.69	76.98	6,859.4	67.4	251.7	10.1	7.20
7,013.0	65.44	77.13	6,873.8	74.3	281.8	12.4	2.24
7,045.0	67.57	80.72	6,886.5	80.0	310.6	15.6	12.25
7,073.0	68.16	85.29	6,897.1	83.1	336.3	20.2	15.26
7,107.0	68.76	91.99	6,909.6	83.9	367.9	28.8	18.41
7,138.0	69.05	96.70	6,920.8	81.7	396.7	39.4	14.20
<b>Burkett</b>							
7,139.0	69.06	96.85	6,921.1	81.6	397.7	39.8	14.20
7,167.0	68.56	101.09	6,931.2	77.5	423.5	51.3	14.23
7,201.0	67.90	105.89	6,943.9	70.1	454.1	67.4	13.25
7,233.0	68.44	109.62	6,955.8	61.1	482.4	84.5	10.95
<b>Tully</b>							
7,261.0	69.87	112.92	6,965.7	51.6	506.8	100.8	12.14
7,296.0	71.65	116.93	6,977.3	37.7	536.8	122.9	11.95
7,327.0	72.75	120.94	6,986.7	23.4	562.6	144.2	12.82
7,355.0	73.85	123.61	6,994.8	9.1	585.3	164.6	9.94
7,390.0	74.07	127.10	7,004.5	-10.4	612.7	191.3	9.60
7,421.0	75.11	129.70	7,012.7	-29.0	636.1	216.0	8.75
7,449.0	77.33	132.78	7,019.4	-46.9	656.5	239.2	13.30
7,484.0	78.52	136.24	7,026.7	-70.9	681.0	269.3	10.25
7,515.0	79.38	137.98	7,032.6	-93.2	701.7	296.7	6.17
7,517.0	79.43	138.23	7,033.0	-94.6	703.0	298.5	12.42
<b>Hamilton</b>							
7,544.0	80.18	141.55	7,037.8	-115.0	720.1	323.0	12.42
7,565.0	80.86	144.32	7,041.2	-131.5	732.6	342.5	13.41
<b>Marcellus</b>							
7,578.0	81.29	146.03	7,043.3	-142.0	739.9	354.7	13.41
7,609.0	82.46	149.84	7,047.6	-168.0	756.2	384.4	12.74
7,638.0	83.40	153.59	7,051.2	-193.4	769.8	412.6	13.24
7,701.0	85.00	158.24	7,057.6	-250.6	795.4	474.8	7.77

JUN 26 2015



## EOW Completion Report



**Company:** Antero Resources  
**Project:** Doddridge County WV  
**Site:** Cline Pad /Nickers/ Farrow/ Gearhart/Carr  
**Well:** Gearhart Unit 2H  
**Wellbore:** Original Wellpath  
**Design:** As Drilled

**Local Co-ordinate Reference:** Well Gearhart Unit 2H  
**TVD Reference:** Gearhart Unit 2H 1096' GL + 24' RKB @ 1120.0u:  
**MD Reference:** Gearhart Unit 2H 1096' GL + 24' RKB @ 1120.0u:  
**North Reference:** Grid  
**Survey Calculation Method:** Minimum Curvature  
**Database:** Oklahoma District

### Survey

MD (usft)	Inc (°)	Azi (azimuth) (°)	TVD (usft)	N/S (usft)	E/W (usft)	V. Sec (usft)	DLeg (°/100usft)
7,795.0	87.58	162.57	7,063.7	-338.9	826.8	568.5	5.35
7,887.0	90.00	162.27	7,065.6	-426.6	854.6	660.5	2.65
7,979.0	90.20	162.50	7,065.4	-514.3	882.5	752.5	0.33
8,069.0	90.17	163.21	7,065.2	-600.3	909.0	842.5	0.79
8,160.0	88.99	163.14	7,065.8	-687.4	935.3	933.5	1.30
8,251.0	88.42	163.33	7,067.9	-774.5	961.6	1,024.4	0.66
8,343.0	88.09	162.36	7,070.7	-862.3	988.7	1,116.4	1.11
8,435.0	89.87	163.72	7,072.3	-950.3	1,015.5	1,208.4	2.43
8,526.0	88.39	163.44	7,073.7	-1,037.6	1,041.2	1,299.3	1.66
8,617.0	87.75	163.38	7,076.8	-1,124.8	1,067.2	1,390.3	0.71
8,708.0	88.09	162.95	7,080.1	-1,211.8	1,093.5	1,481.2	0.60
8,799.0	87.79	162.91	7,083.3	-1,298.7	1,120.2	1,572.2	0.33
8,890.0	88.73	163.34	7,086.1	-1,385.8	1,146.6	1,663.1	1.14
8,984.0	89.00	163.89	7,088.0	-1,475.9	1,173.2	1,757.1	0.65
9,078.0	90.23	163.28	7,088.6	-1,566.1	1,199.7	1,851.1	1.46
9,172.0	90.03	162.53	7,088.4	-1,656.0	1,227.3	1,945.1	0.83
9,267.0	90.97	164.00	7,087.6	-1,746.9	1,254.7	2,040.1	1.84
9,361.0	90.97	163.16	7,086.0	-1,837.1	1,281.3	2,134.0	0.89
9,455.0	89.70	162.22	7,085.4	-1,926.8	1,309.2	2,228.0	1.68
9,549.0	89.67	161.27	7,085.9	-2,016.1	1,338.7	2,322.0	1.01
9,643.0	90.03	160.25	7,086.2	-2,104.8	1,369.7	2,416.0	1.15
9,737.0	89.90	162.30	7,086.2	-2,193.9	1,399.8	2,509.9	2.19
9,831.0	89.43	162.15	7,086.8	-2,283.4	1,428.5	2,603.9	0.52
9,926.0	89.63	163.29	7,087.6	-2,374.1	1,456.7	2,698.9	1.22
10,020.0	89.70	162.16	7,088.1	-2,463.8	1,484.7	2,792.9	1.20
10,114.0	90.03	162.79	7,088.3	-2,553.5	1,513.0	2,886.9	0.76
10,208.0	89.60	162.43	7,088.6	-2,643.2	1,541.1	2,980.9	0.60
10,302.0	89.97	163.26	7,089.0	-2,733.0	1,568.8	3,074.9	0.97
10,396.0	89.97	163.05	7,089.0	-2,823.0	1,596.0	3,168.9	0.22
10,490.0	89.60	162.79	7,089.4	-2,912.8	1,623.6	3,262.9	0.48
10,584.0	89.97	163.24	7,089.7	-3,002.7	1,651.1	3,356.9	0.62
10,678.0	89.70	162.93	7,090.0	-3,092.6	1,678.4	3,450.9	0.44
10,772.0	89.43	162.74	7,090.7	-3,182.4	1,706.2	3,544.9	0.35
10,866.0	89.13	162.03	7,091.9	-3,272.0	1,734.6	3,638.9	0.82
10,960.0	89.63	162.73	7,092.9	-3,361.6	1,763.1	3,732.9	0.92
11,054.0	89.66	162.62	7,093.5	-3,451.3	1,791.1	3,826.9	0.12
11,148.0	88.92	161.77	7,094.7	-3,540.8	1,819.8	3,920.9	1.20
11,242.0	89.78	163.40	7,095.7	-3,630.5	1,847.9	4,014.8	1.96
11,336.0	89.80	163.06	7,096.1	-3,720.5	1,875.1	4,108.8	0.36
11,430.0	89.40	163.74	7,096.7	-3,810.6	1,901.9	4,202.8	0.84
11,525.0	90.80	164.44	7,096.6	-3,902.0	1,928.0	4,297.8	1.65
11,619.0	89.52	162.87	7,096.3	-3,992.2	1,954.4	4,391.8	2.15
11,713.0	90.30	162.61	7,096.5	-4,081.9	1,982.3	4,485.8	0.87
11,807.0	89.77	161.41	7,096.4	-4,171.3	2,011.3	4,579.8	1.40

JUN 26 2015



EOW Completion Report



<b>Company:</b>	Antero Resources	<b>Local Co-ordinate Reference:</b>	Well Gearhart Unit 2H
<b>Project:</b>	Doddridge County WV	<b>TVD Reference:</b>	Gearhart Unit 2H 1096' GL + 24' RKB @ 1120.0us
<b>Site:</b>	Cline Pad /Nickers/ Farrow/ Gearhart/Carr	<b>MD Reference:</b>	Gearhart Unit 2H 1096' GL + 24' RKB @ 1120.0us
<b>Well:</b>	Gearhart Unit 2H	<b>North Reference:</b>	Grid
<b>Wellbore:</b>	Original Wellpath	<b>Survey Calculation Method:</b>	Minimum Curvature
<b>Design:</b>	As Drilled	<b>Database:</b>	Oklahoma District

Survey

MD (usft)	Inc (°)	Azi (azimuth) (°)	TVD (usft)	N/S (usft)	E/W (usft)	V. Sec (usft)	DLeg (°/100usft)
11,901.0	89.56	162.11	7,097.0	-4,260.6	2,040.7	4,673.8	0.78
11,995.0	90.13	161.91	7,097.2	-4,350.0	2,069.8	4,767.8	0.64
12,089.0	90.27	161.47	7,096.9	-4,439.2	2,099.3	4,861.7	0.49
12,184.0	90.07	162.38	7,096.6	-4,529.6	2,128.8	4,956.7	0.98
12,278.0	89.50	162.79	7,097.0	-4,619.2	2,156.9	5,050.7	0.75
12,372.0	90.44	162.85	7,097.0	-4,709.0	2,184.7	5,144.7	1.00
12,466.0	90.17	164.02	7,096.5	-4,799.1	2,211.5	5,238.7	1.28
12,560.0	89.25	162.87	7,097.0	-4,889.2	2,238.3	5,332.7	1.57
12,655.0	90.20	163.39	7,097.4	-4,980.2	2,265.8	5,427.7	1.14
12,749.0	89.23	162.93	7,097.9	-5,070.1	2,293.1	5,521.7	1.14
12,843.0	90.00	162.30	7,098.5	-5,159.8	2,321.1	5,615.7	1.06
12,937.0	89.66	162.18	7,098.8	-5,249.3	2,349.8	5,709.7	0.38
13,031.0	90.81	163.27	7,098.4	-5,339.1	2,377.7	5,803.7	1.69
13,125.0	88.22	160.05	7,099.2	-5,428.3	2,407.3	5,897.6	4.40
13,184.0	89.70	162.43	7,100.3	-5,484.2	2,426.3	5,956.6	4.75
13,219.0	89.63	162.64	7,100.5	-5,517.5	2,436.8	5,991.6	0.63
13,313.0	90.74	164.98	7,100.2	-5,607.8	2,463.0	6,085.6	2.76
13,408.0	88.73	162.11	7,100.6	-5,698.9	2,489.9	6,180.6	3.69
13,502.0	89.77	163.77	7,101.9	-5,788.7	2,517.5	6,274.5	2.08
13,596.0	88.89	162.88	7,103.0	-5,878.8	2,544.4	6,368.5	1.33
13,690.0	89.93	163.03	7,103.9	-5,968.6	2,572.0	6,462.5	1.12
13,784.0	89.39	163.52	7,104.5	-6,058.7	2,599.0	6,556.5	0.78
13,879.0	90.57	163.95	7,104.5	-6,149.9	2,625.6	6,651.5	1.32
13,973.0	89.70	162.63	7,104.3	-6,239.9	2,652.7	6,745.5	1.68
14,067.0	89.26	163.53	7,105.2	-6,329.8	2,680.0	6,839.5	1.07
14,153.0	89.46	164.65	7,106.1	-6,412.5	2,703.6	6,925.5	1.32
14,206.0	90.00	162.78	7,106.4	-6,463.4	2,718.5	6,978.4	3.67

Design Annotations

Measured Depth (usft)	Vertical Depth (usft)	Local Coordinates		Comment
		+N/-S (usft)	+E/-W (usft)	
6,632.0	6,622.4	1.4	17.8	Sycamore
6,835.0	6,783.2	36.8	134.0	Middlesex
7,138.0	6,920.8	81.7	396.7	Burkett
7,233.0	6,955.8	61.1	482.4	Tully
7,517.0	7,033.0	-94.6	703.0	Hamilton
7,565.0	7,041.2	-131.5	732.6	Marcellus

Checked By: \_\_\_\_\_ Approved By: \_\_\_\_\_ Date: \_\_\_\_\_