

RECEIVED

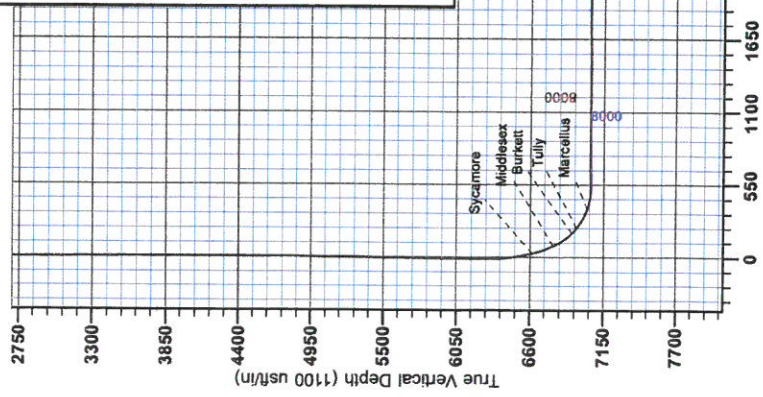
JUN 26 2015

WELL GEOLOGICAL SURVEY

MORGANTOWN, WV



**Antero**  
**Nickers Unit 3H**  
**Doddridge County WV**  
**Northing: 14229693.28**  
**Easting: 1725497.94**  
**As Drilled**



<p>WELL DETAILS: Nickeys Unit 3H                  Grid Level: 10000                  10000</p>		<p>Longitude: 816                  816</p>	
<p>+N/S +E/W Northing Easting                  0.0 0.0 14229693.28 1725497.94</p>		<p>Longitude: 816                  816</p>	
<p>PROJECT DETAILS: Doddridge County WV</p>			
<p>Guides System: Nicks Transverse Monitor (US Survey Feet)                  UTM 18Q UTM 18Q (NAD83 CONUS)                  Ellipsoid: Clarke 1880                  Zone: Zone 17N (84 W to 78 W)                  System Datum: Mean Sea Level</p>			
<p>REFERENCE INFORMATION                  Coordinates (N/E) Reference: Well Nicks Unit 3H, Grid High                  Vertical Datum: Mean Sea Level @ 1150.0usft                  Horizontal Datum: NAD 83 (US CONUS)                  UTM 18Q UTM 18Q (NAD83 CONUS)                  Ellipsoid: Clarke 1880                  Zone: Zone 17N (84 W to 78 W)                  System Datum: Mean Sea Level</p>			

Genie Lightfoot  
 13:30, June 23 2015  
 Scientific Drilling  
 421 South Eagle Lane  
 Oklahoma City, OK



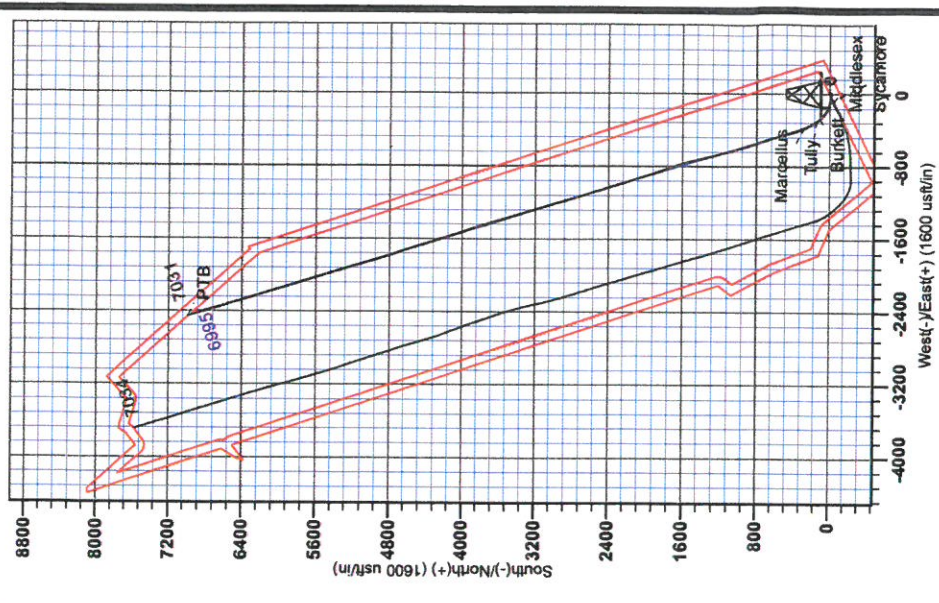
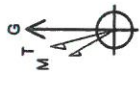
LEGEND

- Nickers Unit 3H, Original Wellpath, Plan 3 V0
- Nickers Unit 2H, Original Wellpath, As Drilled V0
- As Drilled

Name	TVD	+N/S	+E/W	Northing	Easting	Latitude	Longitude
SHL Nickeys Unit 3H	0.0	0.0	0.0	14229693.27	1725497.94	39° 11' 8.532 800° 41' 59.056 W	
Actual BHL Nickeys Unit 3H	7030.8	6978.8	-2446.9	14236672.07	1723051.0398°	12° 17' 616 800° 42' 29.858 W	

To convert Magnetic North to Grid, Subtract 6.63°  
 To convert True North to Grid, Subtract 0.19°

Magnetic Field  
 Strength: 52294.0anT  
 Dip Angle: 66.77°  
 Date: 12/12/2013  
 Model: IGRF2010



Vertical Section at 342.78° (1100 usft/m)



RECEIVED  
JUN 26 2015  
WV GEOLOGICAL SURVEY  
MORGANTOWN, WV

# Antero

Doddridge County WV  
Cline Pad /Nickers/ Farrow/ Gearhart/Carr  
Nickers Unit 3H  
Original Wellpath

Design: As Drilled

## EOW Completion Report

23 June, 2015





RECEIVED

JUN 26 2015



EOW Completion Report



<b>Company:</b>	Antero	<b>Local Co-ordinate Reference:</b>	Well Nickers Unit 3H
<b>Project:</b>	Doddridge County WV	<b>TVD Reference:</b>	Nickers Unit 3H 1096' GL + 24' RKB @ 1120.0usf
<b>Site:</b>	Cline Pad /Nickers/ Farrow/ Gearhart/Carr	<b>MD Reference:</b>	Nickers Unit 3H 1096' GL + 24' RKB @ 1120.0usf
<b>Well:</b>	Nickers Unit 3H	<b>North Reference:</b>	Grid
<b>Wellbore:</b>	Original Wellpath	<b>Survey Calculation Method:</b>	Minimum Curvature
<b>Design:</b>	As Drilled	<b>Database:</b>	Oklahoma District

<b>Project</b>	Doddridge County WV, McClellan District		
<b>Map System:</b>	Universal Transverse Mercator (US Survey Fee	<b>System Datum:</b>	Mean Sea Level
<b>Geo Datum:</b>	NAD 1927 (NADCON CONUS)		
<b>Map Zone:</b>	Zone 17N (84 W to 78 W)		

<b>Site</b>	Cline Pad /Nickers/ Farrow/ Gearhart/Carr				
<b>Site Position:</b>		<b>Northing:</b>	14,229,675.44 usft	<b>Latitude:</b>	39° 11' 8.355 N
<b>From:</b>	Map	<b>Easting:</b>	1,725,508.24 usft	<b>Longitude:</b>	80° 41' 58.926 W
<b>Position Uncertainty:</b>	0.0 usft	<b>Slot Radius:</b>	13-3/16"	<b>Grid Convergence:</b>	0.19 °

<b>Well</b>	Nickers Unit 3H, Marcellus					
<b>Well Position</b>	<b>+N/-S</b>	0.0 usft	<b>Northing:</b>	14,229,693.28 usft	<b>Latitude:</b>	39° 11' 8.532 N
	<b>+E/-W</b>	0.0 usft	<b>Easting:</b>	1,725,497.94 usft	<b>Longitude:</b>	80° 41' 59.056 W
<b>Position Uncertainty</b>		2.0 usft	<b>Wellhead Elevation:</b>	1,120.0 usft	<b>Ground Level:</b>	1,096.0 usft

<b>Wellbore</b>	Original Wellpath
-----------------	-------------------

Magnetics	Model Name	Sample Date	Declination (°)	Dip Angle (°)	Field Strength (nT)
	IGRF2010	12/12/2013	-8.49	66.77	52,294

<b>Design</b>	As Drilled
---------------	------------

<b>Audit Notes:</b>	
<b>Version:</b>	1.0
<b>Phase:</b>	ACTUAL
<b>Tie On Depth:</b>	0.0

Vertical Section:	Depth From (TVD) (usft)	+N/-S (usft)	+E/-W (usft)	Direction (°)
	0.0	0.0	0.0	342.78

Survey Program		Date			
		6/23/2015			
From (usft)	To (usft)	Survey (Wellbore)	Tool Name	Description	
111.0	6,265.0	Survey #4 Def Gyro to KOP (Original Well	SDI Standard Keeper	Scientific Drilling Intl. Standard Wireline Keeper	
6,318.0	14,249.0	Survey #5 SDI MWD (Original Wellpath)	SDI MWD	Scientific Drilling Intl. MWD - Standard ver 1.0.1	

MD (usft)	Inc (°)	Azi (azimuth) (°)	TVD (usft)	N/S (usft)	E/W (usft)	V. Sec (usft)	DLeg (°/100usft)
0.0	0.00	0.00	0.0	0.0	0.0	0.0	0.00
111.0	1.50	62.56	111.0	0.7	1.3	0.3	1.35
211.0	0.84	64.62	211.0	1.6	3.1	0.6	0.66
311.0	0.37	54.16	311.0	2.1	4.0	0.8	0.48
411.0	0.19	87.83	411.0	2.3	4.5	0.9	0.24
511.0	0.32	65.67	511.0	2.4	4.9	0.9	0.16
611.0	0.21	108.80	611.0	2.5	5.3	0.8	0.22
711.0	0.25	99.81	711.0	2.4	5.7	0.6	0.05
811.0	0.13	117.85	811.0	2.3	6.0	0.4	0.13
911.0	0.22	93.61	911.0	2.2	6.3	0.2	0.11
1,011.0	0.04	109.89	1,011.0	2.2	6.5	0.2	0.18



JUN 26 2015



EOW Completion Report



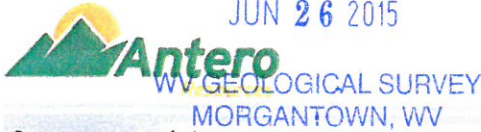
**Company:** Antero  
**Project:** Doddridge County WV  
**Site:** Cline Pad /Nickers/ Farrow/ Gearhart/Carr  
**Well:** Nickers Unit 3H  
**Wellbore:** Original Wellpath  
**Design:** As Drilled

**Local Co-ordinate Reference:** Well Nickers Unit 3H  
**TVD Reference:** Nickers Unit 3H 1096' GL + 24' RKB @ 1120.0usf  
**MD Reference:** Nickers Unit 3H 1096' GL + 24' RKB @ 1120.0usf  
**North Reference:** Grid  
**Survey Calculation Method:** Minimum Curvature  
**Database:** Oklahoma District

Survey

MD (usft)	Inc (°)	Azi (azimuth) (°)	TVD (usft)	N/S (usft)	EW (usft)	V. Sec (usft)	DLeg (°/100usft)
1,111.0	0.28	130.23	1,111.0	2.0	6.8	-0.1	0.24
1,211.0	0.03	27.83	1,211.0	1.9	7.0	-0.3	0.29
1,311.0	0.04	42.05	1,311.0	1.9	7.0	-0.2	0.01
1,411.0	0.04	65.41	1,411.0	2.0	7.0	-0.2	0.02
1,511.0	0.09	309.79	1,511.0	2.0	7.0	-0.1	0.11
1,611.0	0.17	309.38	1,611.0	2.2	6.8	0.1	0.08
1,711.0	0.14	332.79	1,711.0	2.4	6.7	0.3	0.07
1,811.0	0.11	265.47	1,811.0	2.5	6.5	0.4	0.14
1,911.0	0.12	124.56	1,911.0	2.4	6.5	0.4	0.22
2,011.0	0.09	226.04	2,011.0	2.3	6.5	0.3	0.16
2,111.0	0.23	138.73	2,111.0	2.1	6.6	0.0	0.24
2,211.0	0.10	155.50	2,211.0	1.9	6.8	-0.2	0.14
2,311.0	0.19	143.66	2,311.0	1.7	6.9	-0.5	0.09
2,411.0	0.23	267.47	2,411.0	1.5	6.8	-0.6	0.37
2,511.0	0.15	206.70	2,511.0	1.4	6.6	-0.6	0.20
2,611.0	0.04	208.60	2,611.0	1.2	6.5	-0.7	0.11
2,711.0	0.24	229.51	2,711.0	1.1	6.3	-0.8	0.20
2,811.0	0.19	280.16	2,810.9	1.0	6.0	-0.8	0.19
2,911.0	0.24	268.19	2,910.9	1.0	5.6	-0.7	0.07
3,011.0	0.50	285.20	3,010.9	1.1	5.0	-0.4	0.28
3,111.0	0.52	274.38	3,110.9	1.2	4.1	0.0	0.10
3,211.0	0.40	265.49	3,210.9	1.3	3.3	0.2	0.14
3,311.0	0.52	285.27	3,310.9	1.3	2.5	0.5	0.20
3,411.0	0.50	284.11	3,410.9	1.6	1.7	1.0	0.02
3,511.0	0.55	302.78	3,510.9	1.9	0.8	1.6	0.18
3,611.0	0.54	303.20	3,610.9	2.5	0.0	2.3	0.01
3,711.0	0.33	297.47	3,710.9	2.8	-0.6	2.9	0.21
3,811.0	0.44	302.82	3,810.9	3.2	-1.2	3.4	0.12
3,911.0	0.45	302.73	3,910.9	3.6	-1.8	4.0	0.01
4,011.0	0.37	306.71	4,010.9	4.0	-2.4	4.6	0.08
4,111.0	0.30	285.79	4,110.9	4.3	-2.9	5.0	0.14
4,211.0	0.27	257.98	4,210.9	4.3	-3.4	5.1	0.14
4,311.0	0.46	232.97	4,310.9	4.0	-4.0	5.0	0.24
4,411.0	0.59	224.28	4,410.9	3.4	-4.7	4.6	0.15
4,511.0	0.64	217.36	4,510.9	2.6	-5.4	4.1	0.09
4,611.0	0.56	221.04	4,610.9	1.8	-6.0	3.5	0.09
4,711.0	0.66	220.72	4,710.9	1.0	-6.7	2.9	0.10
4,811.0	0.66	209.85	4,810.9	0.0	-7.4	2.2	0.13
4,911.0	0.74	201.14	4,910.9	-1.1	-7.9	1.3	0.13
5,011.0	0.87	179.98	5,010.9	-2.4	-8.1	0.1	0.32
5,111.0	0.89	179.33	5,110.9	-4.0	-8.1	-1.4	0.02
5,211.0	0.74	180.52	5,210.8	-5.4	-8.1	-2.7	0.15
5,311.0	0.70	181.61	5,310.8	-6.6	-8.1	-3.9	0.04
5,411.0	0.46	179.59	5,410.8	-7.7	-8.2	-4.9	0.24

JUN 26 2015



## EOW Completion Report



**Company:** Antero  
**Project:** Doddridge County WV  
**Site:** Cline Pad /Nickers/ Farrow/ Gearhart/Carr  
**Well:** Nickers Unit 3H  
**Wellbore:** Original Wellpath  
**Design:** As Drilled

**Local Co-ordinate Reference:** Well Nickers Unit 3H  
**TVD Reference:** Nickers Unit 3H 1096' GL + 24' RKB @ 1120.0usf  
**MD Reference:** Nickers Unit 3H 1096' GL + 24' RKB @ 1120.0usf  
**North Reference:** Grid  
**Survey Calculation Method:** Minimum Curvature  
**Database:** Oklahoma District

### Survey

MD (usft)	Inc (°)	Azi (azimuth) (°)	TVD (usft)	N/S (usft)	E/W (usft)	V. Sec (usft)	DLeg (°/100usft)
5,511.0	0.39	170.79	5,510.8	-8.4	-8.1	-5.6	0.10
5,611.0	0.52	162.77	5,610.8	-9.2	-7.9	-6.4	0.14
5,711.0	0.59	164.47	5,710.8	-10.1	-7.6	-7.4	0.07
5,811.0	0.61	157.72	5,810.8	-11.1	-7.3	-8.4	0.07
5,911.0	0.38	166.36	5,910.8	-11.9	-7.0	-9.3	0.24
6,011.0	0.26	187.18	6,010.8	-12.4	-7.0	-9.8	0.17
6,111.0	0.25	200.82	6,110.8	-12.9	-7.1	-10.2	0.06
6,211.0	0.27	204.18	6,210.8	-13.3	-7.2	-10.6	0.03
6,265.0	0.38	163.81	6,264.8	-13.6	-7.3	-10.8	0.46
6,318.0	0.05	157.81	6,317.8	-13.8	-7.2	-11.0	0.62
6,350.0	2.81	272.09	6,349.8	-13.8	-8.0	-10.8	8.85
6,381.0	7.03	276.95	6,380.7	-13.5	-10.6	-9.8	13.67
6,412.0	11.44	281.88	6,411.3	-12.6	-15.5	-7.5	14.44
6,444.0	15.63	282.24	6,442.4	-11.1	-22.8	-3.8	13.10
6,475.0	18.79	279.92	6,472.0	-9.3	-31.8	0.5	10.43
6,506.0	21.58	278.71	6,501.1	-7.6	-42.4	5.3	9.10
6,538.0	24.07	278.97	6,530.6	-5.7	-54.7	10.7	7.79
6,569.0	25.82	279.92	6,558.7	-3.5	-67.5	16.6	5.79
6,600.0	26.99	280.11	6,586.4	-1.1	-81.1	22.9	3.78
6,632.0	28.16	281.44	6,614.8	1.6	-95.7	29.9	4.13
6,636.0	28.26	281.60	6,618.3	2.0	-97.5	30.8	3.10
<b>Sycamore</b>							
6,663.0	28.93	282.64	6,642.0	4.7	-110.2	37.1	3.10
6,694.0	30.25	284.38	6,669.0	8.3	-125.0	44.9	5.08
6,725.0	31.23	286.58	6,695.6	12.5	-140.3	53.5	4.81
6,757.0	33.19	295.02	6,722.7	18.6	-156.2	64.0	15.32
6,788.0	33.72	298.75	6,748.6	26.3	-171.4	75.9	6.85
6,818.0	33.38	298.33	6,773.6	34.3	-186.0	87.8	1.36
<b>Middlesex</b>							
6,819.0	33.37	298.32	6,774.4	34.5	-186.5	88.2	1.36
6,850.0	34.80	301.21	6,800.1	43.2	-201.6	100.9	6.97
6,882.0	37.55	305.18	6,825.9	53.5	-217.3	115.5	11.29
6,913.0	40.44	309.72	6,850.0	65.4	-232.8	131.4	13.10
6,944.0	41.92	313.75	6,873.4	79.0	-248.0	148.9	9.80
6,976.0	44.07	317.82	6,896.8	94.6	-263.2	168.3	10.97
6,996.0	46.80	319.76	6,910.8	105.3	-272.6	181.3	15.31
<b>Burkett</b>							
7,007.0	48.32	320.75	6,918.2	111.6	-277.8	188.8	15.31
7,038.0	52.87	323.35	6,937.9	130.5	-292.5	211.2	16.04
7,051.0	53.89	324.24	6,945.7	138.9	-298.7	221.1	9.61
<b>Tully</b>							
7,070.0	55.40	325.51	6,956.6	151.6	-307.6	235.8	9.61
7,101.0	57.82	327.53	6,973.7	173.1	-321.9	260.7	9.51
7,132.0	61.55	330.82	6,989.4	196.1	-335.5	286.7	15.12
7,164.0	65.71	333.31	7,003.6	221.5	-349.0	314.8	14.75



JUN 26 2015



## EOW Completion Report



**Company:** Antero  
**Project:** Doddridge County WV  
**Site:** Cline Pad /Nickers/ Farrow/ Gearhart/Carr  
**Well:** Nickers Unit 3H  
**Wellbore:** Original Wellpath  
**Design:** As Drilled

**Local Co-ordinate Reference:** Well Nickers Unit 3H  
**TVD Reference:** Nickers Unit 3H 1096' GL + 24' RKB @ 1120.0usf  
**MD Reference:** Nickers Unit 3H 1096' GL + 24' RKB @ 1120.0usf  
**North Reference:** Grid  
**Survey Calculation Method:** Minimum Curvature  
**Database:** Oklahoma District

### Survey

MD (usft)	Inc (°)	Azi (azimuth) (°)	TVD (usft)	N/S (usft)	E/W (usft)	V. Sec (usft)	DLeg (°/100usft)
7,195.0	69.72	335.79	7,015.3	247.4	-361.3	343.2	14.90
7,222.0	71.75	337.33	7,024.2	270.7	-371.4	368.6	9.25
<b>Marcellus</b>							
7,226.0	72.05	337.56	7,025.5	274.2	-372.9	372.3	9.25
7,258.0	74.40	338.72	7,034.7	302.7	-384.3	402.9	8.12
7,289.0	78.19	340.24	7,042.1	330.9	-394.8	432.9	13.12
7,321.0	82.86	341.46	7,047.3	360.7	-405.2	464.5	15.07
7,352.0	86.50	342.50	7,050.2	390.0	-414.7	495.3	12.21
7,409.0	92.51	343.00	7,050.7	444.4	-431.6	552.3	10.58
7,503.0	90.97	342.20	7,047.8	534.1	-459.7	646.3	1.85
7,597.0	89.36	341.24	7,047.6	623.4	-489.2	740.2	1.99
7,691.0	90.03	340.87	7,048.1	712.3	-519.7	834.2	0.81
7,785.0	89.60	341.18	7,048.4	801.1	-550.3	928.1	0.56
7,879.0	89.56	342.41	7,049.1	890.4	-579.6	1,022.1	1.31
7,973.0	89.30	343.63	7,050.0	980.3	-607.1	1,116.1	1.33
8,067.0	89.93	345.74	7,050.6	1,071.0	-631.9	1,210.1	2.34
8,161.0	90.37	345.59	7,050.4	1,162.1	-655.2	1,303.9	0.49
8,255.0	88.96	346.57	7,050.9	1,253.3	-677.8	1,397.8	1.83
8,349.0	90.37	344.85	7,051.5	1,344.4	-701.0	1,491.6	2.37
8,443.0	90.67	344.73	7,050.6	1,435.1	-725.7	1,585.6	0.34
8,536.0	91.35	345.60	7,049.0	1,525.0	-749.5	1,678.5	1.19
8,630.0	90.37	342.70	7,047.6	1,615.4	-775.1	1,772.4	3.26
8,725.0	88.19	340.44	7,048.8	1,705.5	-805.2	1,867.4	3.31
8,819.0	89.26	340.45	7,050.9	1,794.0	-836.6	1,961.3	1.14
8,913.0	89.97	341.12	7,051.5	1,882.8	-867.6	2,055.2	1.04
9,007.0	90.60	343.08	7,051.0	1,972.2	-896.4	2,149.2	2.19
9,101.0	89.73	341.09	7,050.7	2,061.7	-925.4	2,243.2	2.31
9,195.0	90.07	340.57	7,050.9	2,150.5	-956.2	2,337.2	0.66
9,289.0	90.54	342.23	7,050.4	2,239.6	-986.2	2,431.1	1.84
9,383.0	90.64	342.70	7,049.4	2,329.2	-1,014.5	2,525.1	0.51
9,477.0	90.74	341.92	7,048.3	2,418.7	-1,043.1	2,619.1	0.84
9,571.0	89.16	343.47	7,048.4	2,508.5	-1,071.0	2,713.1	2.35
9,665.0	90.17	343.10	7,048.9	2,598.5	-1,098.1	2,807.1	1.14
9,759.0	90.75	343.66	7,048.2	2,688.6	-1,125.0	2,901.1	0.86
9,853.0	90.71	343.94	7,047.0	2,778.8	-1,151.2	2,995.1	0.30
9,947.0	89.63	343.18	7,046.7	2,869.0	-1,177.8	3,089.1	1.40
10,041.0	90.67	343.58	7,046.5	2,959.0	-1,204.7	3,183.0	1.19
10,135.0	90.60	342.52	7,045.4	3,049.0	-1,232.1	3,277.0	1.13
10,228.0	91.11	343.13	7,044.0	3,137.8	-1,259.5	3,370.0	0.85
10,322.0	91.38	343.13	7,042.0	3,227.7	-1,286.8	3,464.0	0.29
10,413.0	91.68	343.16	7,039.6	3,314.8	-1,313.2	3,555.0	0.33
10,505.0	89.93	343.75	7,038.3	3,403.0	-1,339.4	3,646.9	2.01
10,597.0	90.10	343.59	7,038.2	3,491.3	-1,365.3	3,738.9	0.25
10,688.0	90.30	344.29	7,037.9	3,578.7	-1,390.4	3,829.9	0.80
10,779.0	90.54	344.42	7,037.3	3,666.3	-1,415.0	3,920.9	0.30

JUN 26 2015



EOW Completion Report



**Company:** Antero  
**Project:** Doddridge County WV  
**Site:** Cline Pad /Nickers/ Farrow/ Gearhart/Carr  
**Well:** Nickers Unit 3H  
**Wellbore:** Original Wellpath  
**Design:** As Drilled

**Local Co-ordinate Reference:** Well Nickers Unit 3H  
**TVD Reference:** Nickers Unit 3H 1096' GL + 24' RKB @ 1120.0usf  
**MD Reference:** Nickers Unit 3H 1096' GL + 24' RKB @ 1120.0usf  
**North Reference:** Grid  
**Survey Calculation Method:** Minimum Curvature  
**Database:** Oklahoma District

Survey

MD (usft)	Inc (°)	Azi (azimuth) (°)	TVD (usft)	N/S (usft)	E/W (usft)	V. Sec (usft)	DLeg (°/100usft)
10,870.0	91.14	341.50	7,035.9	3,753.3	-1,441.6	4,011.9	3.28
10,961.0	89.39	341.24	7,035.5	3,839.5	-1,470.7	4,102.8	1.94
11,051.0	89.46	341.86	7,036.4	3,924.9	-1,499.2	4,192.8	0.69
11,143.0	91.34	342.16	7,035.8	4,012.4	-1,527.6	4,284.8	2.07
11,234.0	90.13	342.55	7,034.6	4,099.1	-1,555.2	4,375.8	1.40
11,325.0	90.24	342.51	7,034.3	4,185.9	-1,582.5	4,466.8	0.13
11,417.0	90.57	342.55	7,033.7	4,273.7	-1,610.1	4,558.8	0.36
11,511.0	89.46	341.28	7,033.6	4,363.0	-1,639.3	4,652.8	1.79
11,605.0	90.54	342.00	7,033.6	4,452.2	-1,668.9	4,746.7	1.38
11,698.0	89.83	341.07	7,033.3	4,540.5	-1,698.3	4,839.7	1.26
11,792.0	89.80	340.53	7,033.6	4,629.2	-1,729.3	4,933.7	0.58
11,886.0	90.37	341.03	7,033.5	4,718.0	-1,760.2	5,027.6	0.81
11,980.0	89.60	343.10	7,033.5	4,807.4	-1,789.2	5,121.6	2.35
12,074.0	89.73	343.64	7,034.1	4,897.5	-1,816.1	5,215.6	0.59
12,168.0	90.40	344.29	7,034.0	4,987.8	-1,842.0	5,309.6	0.99
12,262.0	89.83	343.07	7,033.8	5,078.0	-1,868.4	5,403.5	1.43
12,357.0	90.30	343.02	7,033.7	5,168.9	-1,896.1	5,498.5	0.50
12,450.0	90.77	343.13	7,032.8	5,257.9	-1,923.2	5,591.5	0.52
12,544.0	90.13	343.05	7,032.1	5,347.8	-1,950.5	5,685.5	0.69
12,638.0	90.33	342.87	7,031.7	5,437.7	-1,978.1	5,779.5	0.29
12,732.0	90.17	343.16	7,031.3	5,527.6	-2,005.6	5,873.5	0.35
12,827.0	88.93	342.50	7,032.0	5,618.3	-2,033.6	5,968.5	1.48
12,921.0	89.13	342.41	7,033.6	5,707.9	-2,061.9	6,062.5	0.23
13,015.0	89.23	342.49	7,035.0	5,797.6	-2,090.3	6,156.5	0.14
13,109.0	89.43	342.08	7,036.1	5,887.1	-2,118.9	6,250.5	0.49
13,203.0	89.87	342.50	7,036.6	5,976.6	-2,147.5	6,344.5	0.65
13,297.0	90.03	342.64	7,036.7	6,066.3	-2,175.6	6,438.5	0.23
13,390.0	91.31	343.44	7,035.6	6,155.3	-2,202.7	6,531.5	1.62
13,484.0	90.67	343.68	7,034.0	6,245.4	-2,229.3	6,625.4	0.73
13,578.0	90.57	343.75	7,033.0	6,335.6	-2,255.7	6,719.4	0.13
13,673.0	89.80	343.04	7,032.7	6,426.7	-2,282.9	6,814.4	1.10
13,767.0	89.77	343.09	7,033.0	6,516.6	-2,310.2	6,908.4	0.06
13,861.0	90.90	343.55	7,032.5	6,606.6	-2,337.2	7,002.4	1.30
13,955.0	90.00	344.20	7,031.7	6,696.9	-2,363.3	7,096.4	1.18
14,049.0	89.97	343.46	7,031.8	6,787.2	-2,389.5	7,190.4	0.79
14,143.0	90.34	343.44	7,031.5	6,877.3	-2,416.3	7,284.4	0.39
14,195.0	90.57	343.12	7,031.1	6,927.1	-2,431.2	7,336.4	0.76
14,249.0	90.57	343.12	7,030.6	6,978.8	-2,446.9	7,390.4	0.00

PTB



JUN 26 2015



## EOW Completion Report



**Company:** Antero  
**Project:** Doddridge County WV  
**Site:** Cline Pad /Nickers/ Farrow/ Gearhart/Carr  
**Well:** Nickers Unit 3H  
**Wellbore:** Original Wellpath  
**Design:** As Drilled

**Local Co-ordinate Reference:** Well Nickers Unit 3H  
**TVD Reference:** Nickers Unit 3H 1096' GL + 24' RKB @ 1120.0usf  
**MD Reference:** Nickers Unit 3H 1096' GL + 24' RKB @ 1120.0usf  
**North Reference:** Grid  
**Survey Calculation Method:** Minimum Curvature  
**Database:** Oklahoma District

### Design Annotations

Measured Depth (usft)	Vertical Depth (usft)	Local Coordinates		Comment
		+N/-S (usft)	+E/-W (usft)	
6,636.0	6,618.3	2.0	-97.5	Sycamore
6,818.0	6,773.6	34.3	-186.0	Middlesex
6,996.0	6,910.8	105.3	-272.6	Burkett
7,051.0	6,945.7	138.9	-298.7	Tully
7,222.0	7,024.2	270.7	-371.4	Marcellus
14,249.0	7,030.6	6,978.8	-2,446.9	PTB

Checked By: \_\_\_\_\_ Approved By: \_\_\_\_\_ Date: \_\_\_\_\_