

RECEIVED

JUL 20 2015

WV GEOLOGICAL SURVEY
MORGANTOWN, WV



McConnell Unit 1H
Doddridge County WV
Northing: 14276945.47
Easting: 1721742.77
As Drilled

McConnell 1H 1381 GL + 23 KB @ 1404.0 unit
1381.0



Genie Lightfoot
14-06, March 11, 2014
Scientific Drilling
421 South Eagle Lane
Oklahoma City, OK 73128

WELL DETAILS McConnell Unit 1H
Ground Level: 1381.0
Northing: 14276945.47
Easting: 1721742.7739° 18' 55.865 160° 42' 44.858 W

+N/-S +E/W Northing Longitude
0.0 0.0 14276945.47 1721742.7739° 18' 55.865 160° 42' 44.858 W

SITE DETAILS: Helfin/McConnell Pad

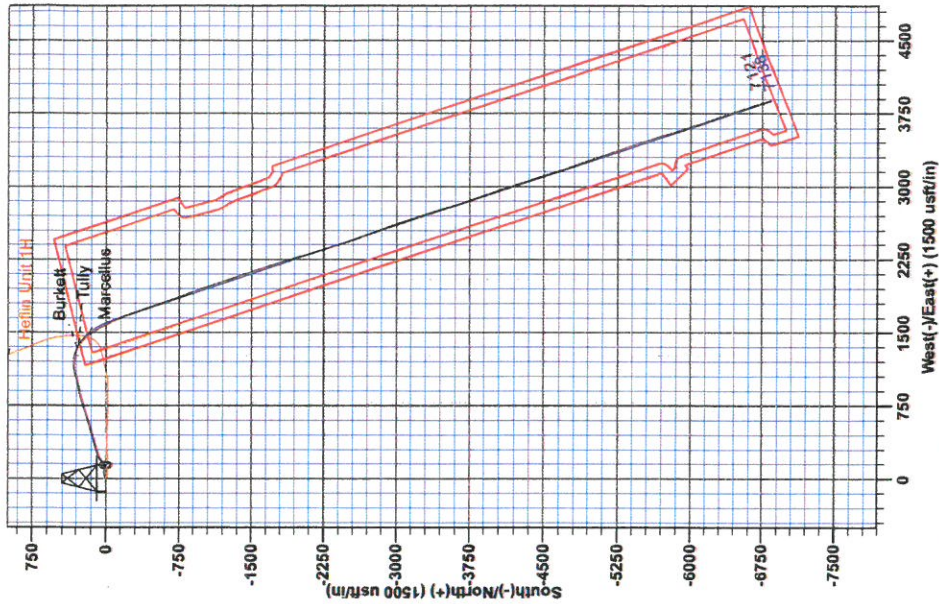
Site Center: Helfin Unit 1H
Site Centre Northing: 14276955.47
Easting: 1721742.61
Positional Uncertainty: 2.0
Convergence: 0.18
Local North: Grid

PROJECT DETAILS: Doddridge County WV

Geodetic System: Universal Transverse Mercator (US Survey Feet)
Datum: NAD 1927 (NADCON CONUS)
Ellipsoid: Clarke 1866
Zone: Zone 17N (84 W to 78 W)
System Datum: Mean Sea Level

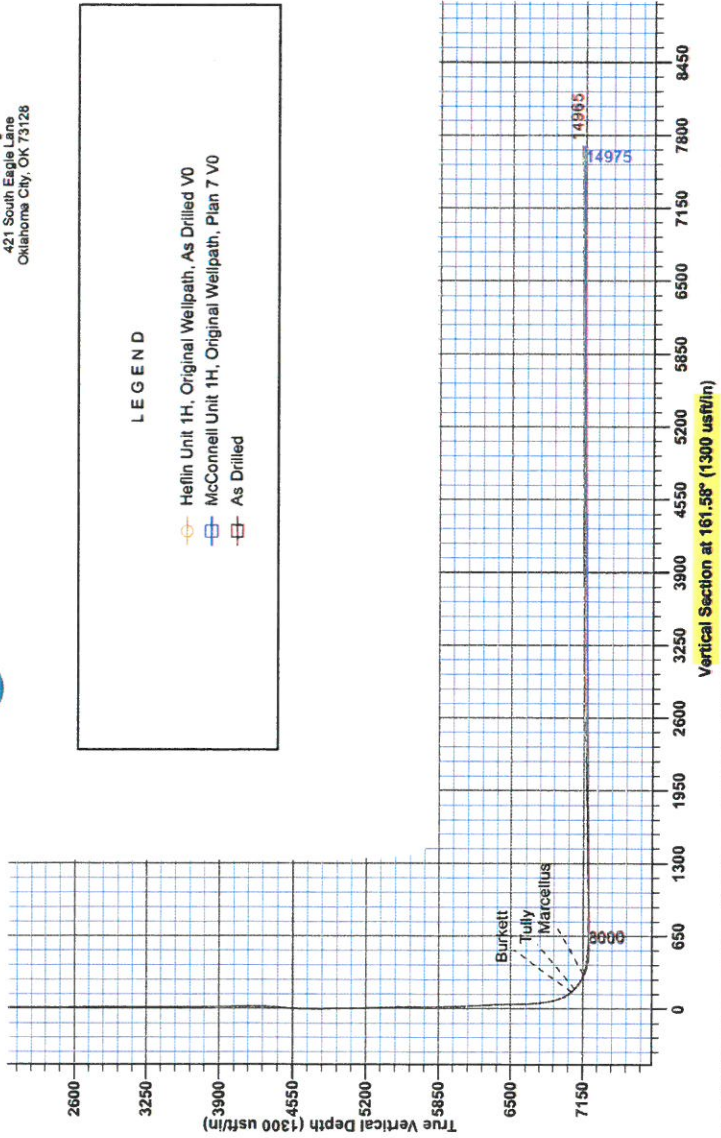
Azimuths to Grid North
True North: -0.18°
Magnetic North: -8.70°
Magnetic Field
Strength: 52339.2anT
Dip Angle: 66.86°
Date: 2/11/2014
Model: IGRF2010

To convert Magnetic North to Grid, Subtract 8.70°
To convert True North to Grid, Subtract 0.18°



LEGEND

- Helfin Unit 1H, Original Wellpath, As Drilled V0
- McConnell Unit 1H, Original Wellpath, Plan 7 V0
- As Drilled





RECEIVED
JUL 20 2015
WV GEOLOGICAL SURVEY
MORGANTOWN, WV

Antero Resources

Doddridge County WV
Heflin/McConnell Pad
McConnell Unit 1H
Original Wellpath

Design: As Drilled

EOW Completion Report

11 March, 2014



JUL 20 2015



WV GEOLOGICAL SURVEY
MORGANTOWN, WV

EOW Completion Report



Company:	Antero Resources	Local Co-ordinate Reference:	Well McConnell Unit 1H
Project:	Doddridge County WV	TVD Reference:	McConnell 1H 1381 GL + 23 KB @ 1404.0usft
Site:	Heflin/McConnell Pad	MD Reference:	McConnell 1H 1381 GL + 23 KB @ 1404.0usft
Well:	McConnell Unit 1H	North Reference:	Grid
Wellbore:	Original Wellpath	Survey Calculation Method:	Minimum Curvature
Design:	As Drilled	Database:	Oklahoma District

Project	Doddridge County WV, McClellan District		
Map System:	Universal Transverse Mercator (US Survey Feet)	System Datum:	Mean Sea Level
Geo Datum:	NAD 1927 (NADCON CONUS)		
Map Zone:	Zone 17N (84 W to 78 W)		

Site	Heflin/McConnell Pad				
Site Position:		Northing:	14,276,955.47 usft	Latitude:	39° 18' 55.964 N
From:	Map	Easting:	1,721,742.61 usft	Longitude:	80° 42' 44.860 W
Position Uncertainty:	2.0 usft	Slot Radius:	13-3/16"	Grid Convergence:	0.18 °

Well	McConnell Unit 1H, Marcellus					
Well Position	+N/-S	0.0 usft	Northing:	14,276,945.47 usft	Latitude:	39° 18' 55.865 N
	+E/-W	0.0 usft	Easting:	1,721,742.77 usft	Longitude:	80° 42' 44.858 W
Position Uncertainty	2.0 usft		Wellhead Elevation:	1,404.0 usft	Ground Level:	1,381.0 usft

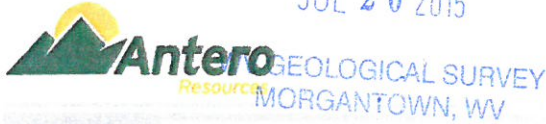
Wellbore	Original Wellpath				
Magnetics	Model Name	Sample Date	Declination (°)	Dip Angle (°)	Field Strength (nT)
	IGRF2010	2/11/2014	-8.51	66.86	52,339

Design	As Drilled				
Audit Notes:					
Version:	1.0	Phase:	ACTUAL	Tie On Depth:	0.0
Vertical Section:	Depth From (TVD) (usft)	+N/-S (usft)	+E/-W (usft)	Direction (°)	
	0.0	0.0	0.0	161.58	

Survey Program	Date 3/11/2014				
From (usft)	To (usft)	Survey (Wellbore)	Tool Name	Description	
100.0	2,527.0	Survey #2 Def Gyro to Int (Original Wellpa	SDI Standard Keeper	Scientific Drilling Intl. Standard Wireline Keeper	
2,549.8	4,500.0	Survey #4 Final Gyro (Original Wellpath)	SDI Standard Keeper	Scientific Drilling Intl. Standard Wireline Keeper	
4,634.0	14,965.0	Survey #5 MWD (Original Wellpath)	SDI MWD	Scientific Drilling Intl. MWD - Standard ver 1.0.1	

Survey									
MD (usft)	Inc (°)	Azi (azimuth) (°)	TVD (usft)	N/S (usft)	E/W (usft)	V. Sec (usft)	DLeg (°/100usft)		
0.0	0.00	0.00	0.0	0.0	0.0	0.0	0.00	0.00	
100.0	0.45	281.33	100.0	0.1	-0.4	-0.2	0.45		
200.0	0.30	297.41	200.0	0.3	-1.0	-0.6	0.18		
300.0	0.19	299.07	300.0	0.5	-1.4	-0.9	0.11		
400.0	0.76	77.43	400.0	0.7	-0.9	-0.9	0.91		
500.0	3.66	76.87	499.9	1.6	2.9	-0.6	2.90		
600.0	6.00	65.61	599.5	4.5	10.7	-0.8	2.51		
700.0	7.00	62.20	698.9	9.5	20.9	-2.4	1.07		
800.0	5.93	73.90	798.3	13.7	31.3	-3.2	1.69		
900.0	5.85	78.02	897.7	16.2	41.2	-2.4	0.43		

JUL 20 2015



EOW Completion Report



Company: Antero Resources
Project: Doddridge County WV
Site: Heflin/McConnell Pad
Well: McConnell Unit 1H
Wellbore: Original Wellpath
Design: As Drilled

Local Co-ordinate Reference: Well McConnell Unit 1H
TVD Reference: McConnell 1H 1381 GL + 23 KB @ 1404.0usft
MD Reference: McConnell 1H 1381 GL + 23 KB @ 1404.0usft
North Reference: Grid
Survey Calculation Method: Minimum Curvature
Database: Oklahoma District

Survey

MD (usft)	Inc (°)	Azi (azimuth) (°)	TVD (usft)	N/S (usft)	E/W (usft)	V. Sec (usft)	DLeg (°/100usft)
1,000.0	6.03	78.95	997.2	18.3	51.3	-1.1	0.20
1,100.0	4.05	87.68	1,096.8	19.4	60.0	0.5	2.12
1,200.0	2.70	89.31	1,196.6	19.6	65.9	2.2	1.35
1,300.0	1.89	95.44	1,296.6	19.5	69.9	3.6	0.85
1,400.0	1.28	94.72	1,396.5	19.2	72.7	4.7	0.61
1,500.0	0.98	103.56	1,496.5	18.9	74.6	5.6	0.35
1,600.0	0.84	101.65	1,596.5	18.6	76.2	6.4	0.14
1,700.0	0.78	111.34	1,696.5	18.2	77.5	7.2	0.15
1,800.0	0.67	117.09	1,796.5	17.7	78.7	8.1	0.13
1,900.0	0.37	127.06	1,896.5	17.2	79.4	8.8	0.31
2,000.0	0.21	93.11	1,996.5	17.0	79.9	9.1	0.23
2,100.0	0.13	99.06	2,096.5	17.0	80.2	9.2	0.08
2,200.0	0.14	126.13	2,196.5	16.9	80.4	9.4	0.06
2,300.0	0.22	90.67	2,296.5	16.8	80.7	9.5	0.13
2,400.0	0.12	58.53	2,396.5	16.9	81.0	9.6	0.13
2,500.0	0.22	124.33	2,496.5	16.8	81.2	9.7	0.20
2,527.0	0.20	146.57	2,523.5	16.8	81.3	9.8	0.31
2,549.9	0.30	161.96	2,546.3	16.7	81.3	9.9	0.52
2,550.0	0.30	162.01	2,546.5	16.7	81.3	9.9	0.17
2,650.0	0.29	194.08	2,646.5	16.2	81.3	10.4	0.16
2,750.0	0.38	199.64	2,746.5	15.6	81.2	10.8	0.10
2,850.0	0.42	220.32	2,846.5	15.0	80.8	11.3	0.15
2,950.0	0.42	230.08	2,946.5	14.5	80.3	11.6	0.07
3,050.0	0.35	243.88	3,046.5	14.1	79.7	11.8	0.12
3,150.0	0.38	264.66	3,146.5	14.0	79.1	11.8	0.13
3,250.0	0.63	252.85	3,246.5	13.8	78.3	11.7	0.27
3,350.0	0.60	218.61	3,346.5	13.2	77.4	11.9	0.36
3,450.0	0.66	215.58	3,446.4	12.3	76.8	12.6	0.07
3,550.0	0.69	224.63	3,546.4	11.4	76.0	13.2	0.11
3,600.0	0.27	183.88	3,596.5	11.1	75.8	13.4	1.03
3,700.0	2.10	64.99	3,696.4	11.6	77.4	13.4	2.24
3,800.0	5.02	74.94	3,796.2	13.5	83.3	13.5	2.97
3,900.0	7.99	77.56	3,895.6	16.2	94.3	14.5	2.98
4,000.0	10.63	79.40	3,994.2	19.4	110.2	16.4	2.66
4,100.0	12.12	76.12	4,092.3	23.6	129.4	18.5	1.62
4,200.0	8.86	81.76	4,190.6	27.2	147.3	20.7	3.41
4,300.0	10.90	62.17	4,289.1	32.7	163.3	20.5	3.90
4,400.0	14.08	50.56	4,386.8	44.9	181.0	14.6	4.04
4,500.0	17.96	49.46	4,482.9	62.6	202.1	4.4	3.89
4,634.0	18.93	69.90	4,610.1	83.6	238.3	-4.0	4.86
4,729.0	17.65	74.18	4,700.3	92.8	266.6	-3.8	1.95
4,823.0	17.85	73.96	4,789.8	100.6	294.2	-2.5	0.22
4,917.0	19.49	73.61	4,878.9	109.0	323.1	-1.4	1.75
5,012.0	20.84	73.38	4,968.1	118.4	354.5	-0.3	1.42
5,107.0	21.80	75.56	5,056.5	127.6	387.7	1.5	1.31



EOW Completion Report



Company: Antero Resources
Project: Doddridge County WV
Site: Heflin/McConnell Pad
Well: McConnell Unit 1H
Wellbore: Original Wellpath
Design: As Drilled

Local Co-ordinate Reference: Well McConnell Unit 1H
TVD Reference: McConnell 1H 1381 GL + 23 KB @ 1404.0usft
MD Reference: McConnell 1H 1381 GL + 23 KB @ 1404.0usft
North Reference: Grid
Survey Calculation Method: Minimum Curvature
Database: Oklahoma District

Survey

MD (usft)	Inc (°)	Azi (azimuth) (°)	TVD (usft)	N/S (usft)	E/W (usft)	V. Sec (usft)	DLeg (°/100usft)
5,202.0	25.61	76.35	5,143.5	136.8	424.8	4.4	4.02
5,298.0	27.23	71.40	5,229.5	148.7	465.8	6.1	2.85
5,393.0	26.12	73.57	5,314.4	161.6	506.4	6.7	1.55
5,488.0	25.20	75.70	5,400.0	172.5	546.1	8.9	1.37
5,582.0	24.32	74.68	5,485.4	182.6	584.1	11.4	1.04
5,678.0	24.53	71.85	5,572.8	194.0	622.2	12.5	1.24
5,773.0	25.50	73.11	5,658.9	206.1	660.5	13.2	1.16
5,867.0	24.14	72.65	5,744.2	217.7	698.2	14.1	1.46
5,962.0	23.09	74.64	5,831.2	228.4	734.7	15.4	1.39
6,057.0	23.75	72.18	5,918.4	239.2	770.9	16.6	1.24
6,152.0	22.60	73.97	6,005.7	250.1	806.6	17.6	1.42
6,247.0	25.99	78.27	6,092.3	259.4	844.6	20.8	4.02
6,342.0	24.92	77.24	6,178.1	268.0	884.5	25.2	1.22
6,437.0	24.70	76.35	6,264.3	277.1	923.3	28.8	0.46
6,500.0	25.86	77.88	6,321.3	283.1	949.5	31.4	2.11
6,532.0	25.08	77.22	6,350.2	286.1	962.9	32.8	2.59
6,628.0	24.37	75.42	6,437.4	295.6	1,001.9	36.2	1.08
6,722.0	25.40	75.79	6,522.7	305.4	1,040.2	38.9	1.11
6,817.0	22.74	75.05	6,609.4	315.1	1,077.7	41.6	2.82
6,849.0	21.08	75.44	6,639.1	318.2	1,089.3	42.3	5.21
6,912.0	21.39	80.10	6,697.8	323.0	1,111.6	44.8	2.72
6,944.0	24.18	84.64	6,727.3	324.6	1,123.9	47.1	10.30
6,975.0	27.35	85.17	6,755.2	325.8	1,137.3	50.2	10.25
7,007.0	29.11	84.38	6,783.4	327.2	1,152.3	53.7	5.62
7,039.0	29.02	84.03	6,811.4	328.8	1,167.8	57.1	0.60
7,071.0	29.85	87.77	6,839.3	329.9	1,183.5	61.0	6.30
7,103.0	30.60	94.05	6,866.9	329.6	1,199.6	66.3	10.15
7,134.0	32.45	97.22	6,893.3	328.0	1,215.7	72.9	8.01
7,165.0	34.91	99.03	6,919.1	325.6	1,232.7	80.6	8.57
7,197.0	37.55	101.96	6,945.0	322.1	1,251.3	89.8	9.86
7,227.0	39.96	104.47	6,968.3	317.8	1,269.6	99.6	9.59
7,258.0	43.08	105.99	6,991.6	312.4	1,289.4	111.0	10.58
7,289.0	44.25	111.14	7,014.0	305.6	1,309.7	123.9	12.07
7,321.0	45.96	115.18	7,036.6	296.7	1,330.5	138.9	10.42
7,344.0	48.29	118.07	7,052.2	289.1	1,345.6	150.9	13.70
Burkett							
7,353.0	49.22	119.15	7,058.2	285.9	1,351.5	155.8	13.70
7,385.0	53.64	121.40	7,078.1	273.2	1,373.1	174.6	14.86
7,388.0	54.10	121.75	7,079.9	272.0	1,375.2	176.5	18.03
Tully							
7,416.0	58.47	124.79	7,095.4	259.2	1,394.6	194.8	18.03
7,448.0	62.02	129.59	7,111.3	242.4	1,416.7	217.7	17.10
7,480.0	64.03	135.27	7,125.8	223.2	1,437.7	242.6	17.02
7,511.0	66.92	140.12	7,138.7	202.3	1,456.7	268.4	17.01

JUL 20 2015



EOW Completion Report



Company: Antero Resources
Project: Doddridge County WV
Site: Heflin/McConnell Pad
Well: McConnell Unit 1H
Wellbore: Original Wellpath
Design: As Drilled

Local Co-ordinate Reference: Well McConnell Unit 1H
TVD Reference: McConnell 1H 1381 GL + 23 KB @ 1404.0usft
MD Reference: McConnell 1H 1381 GL + 23 KB @ 1404.0usft
North Reference: Grid
Survey Calculation Method: Minimum Curvature
Database: Oklahoma District

Survey

MD (usft)	Inc (°)	Azi (azimuth) (°)	TVD (usft)	N/S (usft)	E/W (usft)	V. Sec (usft)	DLeg (°/100usft)
7,555.0	72.50	144.73	7,154.0	169.6	1,481.8	307.3	16.04
7,560.0	72.86	145.18	7,155.4	165.7	1,484.6	311.9	11.19
Marcellus							
7,587.0	74.80	147.59	7,163.0	144.1	1,498.9	336.9	11.19
7,619.0	78.55	148.79	7,170.3	117.6	1,515.3	367.2	12.27
7,650.0	81.08	149.84	7,175.8	91.4	1,530.9	397.0	8.82
7,682.0	82.50	150.81	7,180.4	63.9	1,546.6	428.1	5.36
7,713.0	82.56	150.51	7,184.4	37.1	1,561.6	458.3	0.98
7,745.0	82.79	150.81	7,188.5	9.4	1,577.2	489.4	1.18
7,776.0	84.38	152.56	7,192.0	-17.7	1,591.8	519.8	7.60
7,808.0	86.47	154.24	7,194.5	-46.2	1,606.1	551.3	8.37
7,839.0	88.79	156.66	7,195.8	-74.4	1,619.0	582.1	10.81
7,871.0	90.24	157.95	7,196.1	-103.9	1,631.3	614.0	6.06
7,934.0	89.03	157.09	7,196.5	-162.1	1,655.4	676.9	2.36
8,029.0	91.18	158.70	7,196.3	-250.1	1,691.1	771.7	2.83
8,124.0	90.13	161.07	7,195.2	-339.3	1,723.8	866.6	2.73
8,218.0	90.81	161.17	7,194.4	-428.3	1,754.2	960.6	0.73
8,309.0	90.60	161.10	7,193.3	-514.4	1,783.6	1,051.6	0.24
8,399.0	90.54	160.97	7,192.4	-599.5	1,812.9	1,141.6	0.16
8,489.0	91.34	160.45	7,191.0	-684.4	1,842.6	1,231.6	1.06
8,580.0	90.80	160.15	7,189.3	-770.1	1,873.3	1,322.5	0.68
8,670.0	90.47	159.79	7,188.3	-854.6	1,904.1	1,412.5	0.54
8,761.0	91.17	161.15	7,187.0	-940.4	1,934.5	1,503.5	1.68
8,852.0	90.91	161.04	7,185.3	-1,026.4	1,964.0	1,594.4	0.31
8,943.0	91.11	160.77	7,183.7	-1,112.4	1,993.8	1,685.4	0.37
9,033.0	91.01	160.92	7,182.0	-1,197.4	2,023.3	1,775.4	0.20
9,123.0	90.94	161.89	7,180.5	-1,282.7	2,052.0	1,865.4	1.08
9,213.0	90.84	161.03	7,179.1	-1,368.0	2,080.6	1,955.4	0.96
9,303.0	91.21	161.60	7,177.5	-1,453.3	2,109.4	2,045.4	0.75
9,398.0	90.50	161.20	7,176.1	-1,543.3	2,139.7	2,140.3	0.86
9,493.0	91.28	162.74	7,174.6	-1,633.6	2,169.1	2,235.3	1.82
9,588.0	92.86	163.38	7,171.2	-1,724.4	2,196.8	2,330.2	1.79
9,683.0	90.81	161.47	7,168.1	-1,814.9	2,225.5	2,425.2	2.95
9,778.0	90.64	164.07	7,166.9	-1,905.7	2,253.6	2,520.1	2.74
9,873.0	92.49	165.13	7,164.3	-1,997.2	2,278.8	2,615.0	2.24
9,968.0	92.52	164.34	7,160.2	-2,088.8	2,303.8	2,709.7	0.83
10,063.0	91.44	163.17	7,156.9	-2,179.9	2,330.4	2,804.6	1.68
10,157.0	90.30	162.03	7,155.5	-2,269.6	2,358.5	2,898.6	1.71
10,252.0	90.17	162.29	7,155.1	-2,360.0	2,387.6	2,993.6	0.31
10,347.0	90.84	162.26	7,154.2	-2,450.5	2,416.5	3,088.5	0.71
10,441.0	90.84	162.62	7,152.9	-2,540.1	2,444.8	3,182.5	0.38
10,537.0	90.81	159.38	7,151.5	-2,630.9	2,476.1	3,278.5	3.37
10,632.0	89.73	157.26	7,151.0	-2,719.2	2,511.2	3,373.3	2.50
10,727.0	90.64	160.15	7,150.7	-2,807.7	2,545.7	3,468.2	3.19

RECEIVED

JUL 20 2015



EOW Completion Report



Company: Antero Resources
 Project: Doddridge County WV
 Site: Heflin/McConnell Pad
 Well: McConnell Unit 1H
 Wellbore: Original Wellpath
 Design: As Drilled

Local Co-ordinate Reference: Well McConnell Unit 1H
 TVD Reference: McConnell 1H 1381 GL + 23 KB @ 1404.0usft
 MD Reference: McConnell 1H 1381 GL + 23 KB @ 1404.0usft
 North Reference: Grid
 Survey Calculation Method: Minimum Curvature
 Database: Oklahoma District

Survey

MD (usft)	Inc (°)	Azi (azimuth) (°)	TVD (usft)	N/S (usft)	E/W (usft)	V. Sec (usft)	DLeg (°/100usft)
10,820.0	91.07	160.19	7,149.3	-2,895.1	2,577.2	3,561.2	0.46
10,915.0	90.44	160.18	7,148.1	-2,984.5	2,609.4	3,656.1	0.66
11,010.0	90.84	161.46	7,147.0	-3,074.2	2,640.6	3,751.1	1.41
11,106.0	91.07	161.71	7,145.4	-3,165.3	2,671.0	3,847.1	0.35
11,201.0	91.17	162.57	7,143.6	-3,255.7	2,700.1	3,942.1	0.91
11,296.0	90.37	162.27	7,142.3	-3,346.3	2,728.8	4,037.1	0.90
11,391.0	89.76	162.94	7,142.2	-3,436.9	2,757.2	4,132.0	0.95
11,486.0	89.33	161.97	7,142.9	-3,527.5	2,785.8	4,227.0	1.12
11,580.0	90.27	161.88	7,143.3	-3,616.8	2,815.0	4,321.0	1.00
11,674.0	91.24	162.67	7,142.0	-3,706.4	2,843.6	4,415.0	1.33
11,769.0	90.23	161.18	7,140.8	-3,796.7	2,873.1	4,510.0	1.89
11,864.0	89.76	160.99	7,140.8	-3,886.5	2,903.9	4,605.0	0.53
11,960.0	90.50	160.96	7,140.6	-3,977.3	2,935.2	4,701.0	0.77
12,055.0	88.79	159.86	7,141.2	-4,066.8	2,967.0	4,795.9	2.14
12,150.0	91.51	162.25	7,140.9	-4,156.6	2,997.8	4,890.9	3.81
12,245.0	90.37	161.13	7,139.4	-4,246.8	3,027.7	4,985.9	1.68
12,340.0	89.87	161.73	7,139.2	-4,336.9	3,057.9	5,080.9	0.82
12,435.0	90.66	162.34	7,138.7	-4,427.2	3,087.2	5,175.9	1.05
12,529.0	89.93	161.71	7,138.3	-4,516.6	3,116.2	5,269.9	1.03
12,624.0	89.87	162.25	7,138.4	-4,607.0	3,145.6	5,364.9	0.57
12,719.0	91.01	161.41	7,137.7	-4,697.2	3,175.3	5,459.9	1.49
12,814.0	89.50	159.56	7,137.3	-4,786.8	3,207.0	5,554.9	2.51
12,910.0	90.60	160.18	7,137.2	-4,876.9	3,240.0	5,650.8	1.32
13,005.0	90.20	161.46	7,136.5	-4,966.6	3,271.2	5,745.8	1.41
13,100.0	90.47	161.09	7,136.0	-5,056.6	3,301.7	5,840.8	0.48
13,195.0	90.57	160.74	7,135.1	-5,146.4	3,332.8	5,935.8	0.38
13,290.0	90.17	159.85	7,134.5	-5,235.8	3,364.8	6,030.8	1.03
13,385.0	90.24	162.14	7,134.2	-5,325.6	3,395.8	6,125.8	2.41
13,480.0	90.03	162.13	7,133.9	-5,416.0	3,424.9	6,220.8	0.22
13,575.0	90.34	161.93	7,133.6	-5,506.4	3,454.2	6,315.7	0.39
13,670.0	89.60	160.87	7,133.7	-5,596.4	3,484.5	6,410.7	1.36
13,766.0	91.04	163.15	7,133.1	-5,687.7	3,514.2	6,506.7	2.81
13,861.0	90.87	162.48	7,131.6	-5,778.5	3,542.2	6,601.7	0.73
13,956.0	89.53	161.98	7,131.2	-5,868.9	3,571.2	6,696.7	1.51
14,051.0	90.67	161.34	7,131.1	-5,959.1	3,601.1	6,791.7	1.38
14,146.0	89.66	161.09	7,130.8	-6,049.1	3,631.7	6,886.7	1.10
14,241.0	91.61	162.08	7,129.7	-6,139.2	3,661.7	6,981.7	2.30
14,336.0	92.15	161.79	7,126.6	-6,229.4	3,691.1	7,076.6	0.65
14,431.0	89.26	160.65	7,125.4	-6,319.4	3,721.7	7,171.6	3.27
14,526.0	89.33	162.20	7,126.6	-6,409.4	3,752.0	7,266.6	1.63
14,622.0	89.16	162.06	7,127.9	-6,500.8	3,781.4	7,362.6	0.23
14,716.0	91.65	163.30	7,127.2	-6,590.5	3,809.4	7,456.5	2.96
14,811.0	91.88	162.46	7,124.3	-6,681.2	3,837.4	7,551.5	0.92
14,905.0	90.97	162.47	7,121.9	-6,770.9	3,865.7	7,645.4	0.97
14,965.0	90.26	161.85	7,121.3	-6,828.0	3,884.1	7,705.4	1.57

RECEIVED

JUL 20 2015



EOW Completion Report



Company: Antero Resources	Local Co-ordinate Reference: Well McConnell Unit 1H
Project: Doddridge County WV	TVD Reference: McConnell 1H 1381 GL + 23 KB @ 1404.0usft
Site: Hefin/McConnell Pad	MD Reference: McConnell 1H 1381 GL + 23 KB @ 1404.0usft
Well: McConnell Unit 1H	North Reference: Grid
Wellbore: Original Wellpath	Survey Calculation Method: Minimum Curvature
Design: As Drilled	Database: Oklahoma District

Survey

MD (usft)	Inc (°)	Azi (azimuth) (°)	TVD (usft)	N/S (usft)	E/W (usft)	V. Sec (usft)	DLeg (°/100usft)
-----------	---------	-------------------	------------	------------	------------	---------------	------------------

Design Annotations

Measured Depth (usft)	Vertical Depth (usft)	Local Coordinates		Comment
		+N/-S (usft)	+E/-W (usft)	
7,344.0	7,052.2	289.1	1,345.6	Burkett
7,368.0	7,079.9	272.0	1,375.2	Tully
7,560.0	7,155.4	165.7	1,484.6	Marcellus

Checked By: _____ Approved By: _____ Date: _____