

JUN 26 2015

WV GEOLOGICAL SURVEY  
MORGANTOWN, WV



Antero Resources  
Nickers Unit 2H  
Doddridge County WV  
Northing: 14229675.44  
Easting: 1725508.24  
As Drilled

WELL DETAILS: Nickers Unit 2H  
Ground Level: 1096.0  
Easting: 1725508.24  
Northing: 14229675.44  
+N/S +E/W 0.0 0.0  
Length: 80' 41.56108 W  
Slat

REFERENCE INFORMATION  
Coordinates (NAD 83) Reference: Well Nickers Unit 2H, Grid North  
Well Nickers Unit 2H, Grid East  
Magnetic North: 11/27/2013  
Magnetic Declination: 10.05  
Magnetic Field Strength: 52296.0 nT  
Dip Angle: 68.77°  
Date: 11/27/2013  
Model: IGRF2010

PROJECT DETAILS: Doddridge County WV  
Geodetic System: Universal Transverse Mercator (US Survey Feet)  
Datum: NAD 1983 (NAD80 CONUS)  
Ellipsoid: Clarke 1866  
Zone: Zone 17N (84 W to 78 W)  
System Datum: Mean Sea Level

Genie Lightfoot  
13:39, July 08 2014  
Scientific Drilling  
421 South Eagle Lane  
Oklahoma City, OK

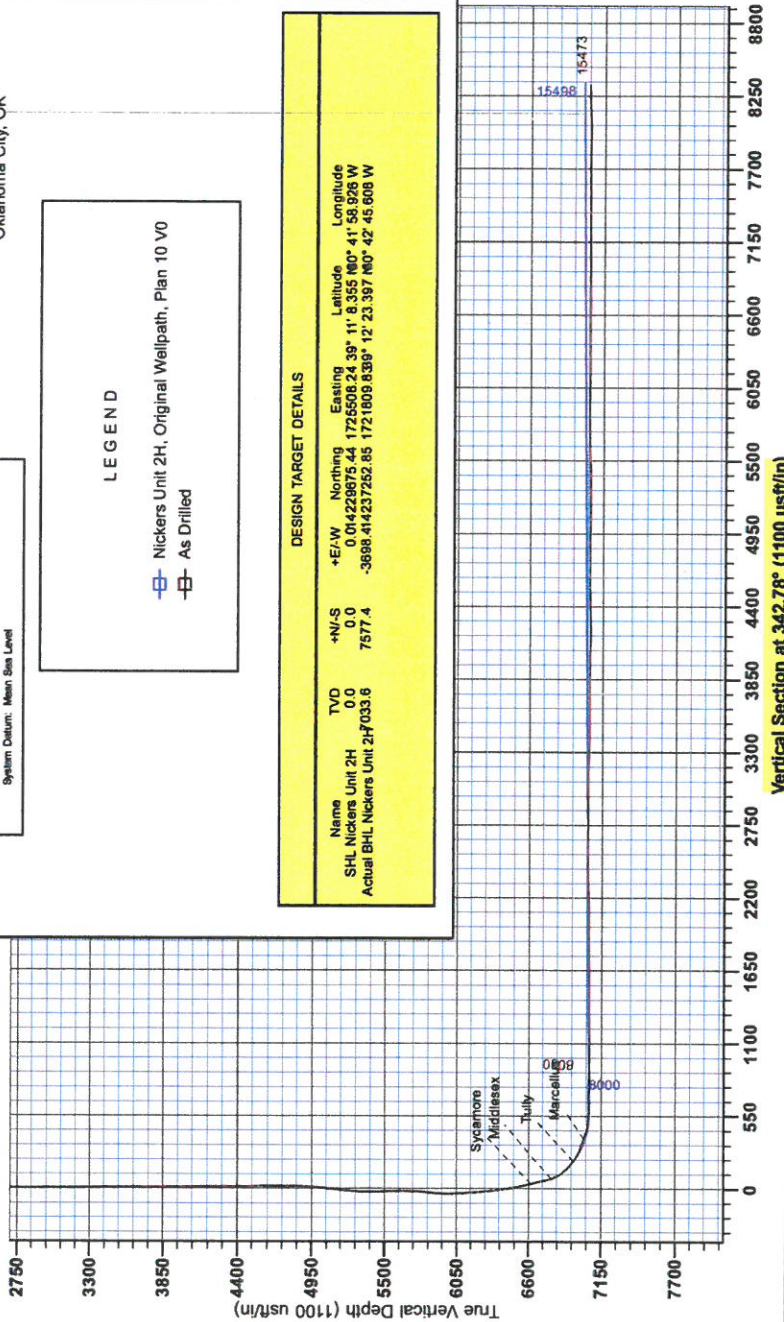


Scientific Drilling

LEGEND  
-□- Nickers Unit 2H, Original Wellpath, Plan 10 VO  
-□- As Drilled

DESIGN TARGET DETAILS

Name	TVD	+N/S	Northing	Easting	Latitude	Longitude
SHL Nickers Unit 2H	0.0	0.0	0.014229675.44	1725508.24	39° 11' 8.355 000" N	41° 58.928 W
Actual BHL Nickers Unit 2H/033.6	7577.4	-3898.4	414237252.85	1721809.839	12° 23.367 000" N	42° 45.608 W



Vertical Section at 342.78° (1100 usft/in)



RECEIVED  
JUN 26 2015  
WV GEOLOGICAL SURVEY  
MORGANTOWN, WV

## **Antero Resources**

**Doddridge County WV  
Cline Pad /Nickers/ Farrow/ Gearhart/Carr  
Nickers Unit 2H  
Original Wellpath**

**Design: As Drilled**

## **EOW Completion Report**

**08 July, 2014**





JUN 26 2015



<b>Company:</b> Antero Resources	<b>Local Co-ordinate Reference:</b> Well Nickers Unit 2H
<b>Project:</b> Doddridge County WV	<b>TVD Reference:</b> Nickers 2H 1096 GL + 24 KB @ 1120.0usft
<b>Site:</b> Cline Pad /Nickers/ Farrow/ Gearhart/Carr	<b>MD Reference:</b> Nickers 2H 1096 GL + 24 KB @ 1120.0usft
<b>Well:</b> Nickers Unit 2H	<b>North Reference:</b> Grid
<b>Wellbore:</b> Original Wellpath	<b>Survey Calculation Method:</b> Minimum Curvature
<b>Design:</b> As Drilled	<b>Database:</b> Oklahoma District

<b>Project</b>	Doddridge County WV, McClellan District		
<b>Map System:</b>	Universal Transverse Mercator (US Survey Fee	<b>System Datum:</b>	Mean Sea Level
<b>Geo Datum:</b>	NAD 1927 (NADCON CONUS)		
<b>Map Zone:</b>	Zone 17N (84 W to 78 W)		

<b>Site</b>	Cline Pad /Nickers/ Farrow/ Gearhart/Carr				
<b>Site Position:</b>		<b>Northing:</b>	14,229,675.44 usft	<b>Latitude:</b>	39° 11' 8.355 N
<b>From:</b>	Map	<b>Easting:</b>	1,725,508.24 usft	<b>Longitude:</b>	80° 41' 58.926 W
<b>Position Uncertainty:</b>	0.0 usft	<b>Slot Radius:</b>	13-3/16"	<b>Grid Convergence:</b>	0.19 °

<b>Well</b>	Nickers Unit 2H, Marcellus					
<b>Well Position</b>	<b>+N/-S</b>	0.0 usft	<b>Northing:</b>	14,229,675.44 usft	<b>Latitude:</b>	39° 11' 8.355 N
	<b>+E/-W</b>	0.0 usft	<b>Easting:</b>	1,725,508.24 usft	<b>Longitude:</b>	80° 41' 58.926 W
<b>Position Uncertainty</b>	2.0 usft		<b>Wellhead Elevation:</b>	1,120.0 usft	<b>Ground Level:</b>	1,096.0 usft

<b>Wellbore</b>	Original Wellpath				
<b>Magnetics</b>	<b>Model Name</b>	<b>Sample Date</b>	<b>Declination (°)</b>	<b>Dip Angle (°)</b>	<b>Field Strength (nT)</b>
	IGRF2010	11/27/2013	-8.49	66.77	52,299

<b>Design</b>	As Drilled				
<b>Audit Notes:</b>					
<b>Version:</b>	1.0	<b>Phase:</b>	ACTUAL	<b>Tie On Depth:</b>	0.0
<b>Vertical Section:</b>		<b>Depth From (TVD) (usft)</b>	<b>+N/-S (usft)</b>	<b>+E/-W (usft)</b>	<b>Direction (°)</b>
		0.0	0.0	0.0	342.78

<b>Survey Program</b>	Date 7/8/2014				
<b>From (usft)</b>	<b>To (usft)</b>	<b>Survey (Wellbore)</b>	<b>Tool Name</b>	<b>Description</b>	
111.0	6,007.0	Survey #3 Final Gyro (Original Wellpath)	SDI Standard Keeper	Scientific Drilling Intl. Standard Wireline Keeper	
6,038.0	15,473.0	Survey #2 MWD (Original Wellpath)	SDI MWD	Scientific Drilling Intl. MWD - Standard ver 1.0.1	

MD (usft)	Inc (°)	Azi (azimuth) (°)	TVD (usft)	N/S (usft)	E/W (usft)	V. Sec (usft)	DLeg (°/100usft)
0.0	0.00	0.00	0.0	0.0	0.0	0.0	0.00
111.0	0.53	324.60	111.0	0.4	-0.3	0.5	0.48
211.0	0.53	329.02	211.0	1.2	-0.8	1.4	0.04
311.0	0.27	334.70	311.0	1.8	-1.1	2.1	0.26
411.0	0.11	31.74	411.0	2.1	-1.2	2.4	0.23
511.0	0.13	44.40	511.0	2.3	-1.1	2.5	0.03
611.0	0.06	95.01	611.0	2.3	-0.9	2.5	0.10
711.0	0.15	81.71	711.0	2.3	-0.7	2.5	0.09
811.0	0.13	120.99	811.0	2.3	-0.5	2.4	0.10
911.0	0.12	81.71	911.0	2.3	-0.3	2.3	0.08
1,011.0	0.23	61.21	1,011.0	2.4	0.0	2.3	0.12

JUN 26 2015



EOW Completion Report



**Company:** Antero Resources  
**Project:** Doddridge County WV  
**Site:** Cline Pad /Nickers/ Farrow/ Gearhart/Carr  
**Well:** Nickers Unit 2H  
**Wellbore:** Original Wellpath  
**Design:** As Drilled

**Local Co-ordinate Reference:** Well Nickers Unit 2H  
**TVD Reference:** Nickers 2H 1096 GL + 24 KB @ 1120.0usft  
**MD Reference:** Nickers 2H 1096 GL + 24 KB @ 1120.0usft  
**North Reference:** Grid  
**Survey Calculation Method:** Minimum Curvature  
**Database:** Oklahoma District

Survey

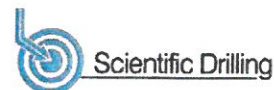
MD (usft)	Inc (°)	Azi (azimuth) (°)	TVD (usft)	N/S (usft)	E/W (usft)	V. Sec (usft)	DLeg (°/100usft)
1,111.0	0.19	110.76	1,111.0	2.4	0.3	2.2	0.18
1,211.0	0.12	101.38	1,211.0	2.3	0.5	2.1	0.07
1,311.0	0.15	101.98	1,311.0	2.3	0.8	2.0	0.03
1,411.0	0.07	144.21	1,411.0	2.2	0.9	1.8	0.11
1,511.0	0.08	104.38	1,511.0	2.1	1.0	1.7	0.05
1,611.0	0.05	125.07	1,611.0	2.1	1.1	1.7	0.04
1,711.0	0.10	115.81	1,711.0	2.0	1.3	1.6	0.05
1,811.0	0.23	52.76	1,811.0	2.1	1.5	1.6	0.21
1,911.0	0.07	110.55	1,911.0	2.2	1.7	1.6	0.20
2,011.0	0.12	60.37	2,011.0	2.3	1.9	1.6	0.09
2,111.0	0.09	107.75	2,111.0	2.3	2.0	1.6	0.09
2,211.0	0.14	55.55	2,211.0	2.3	2.2	1.6	0.11
2,311.0	0.06	123.64	2,311.0	2.4	2.4	1.6	0.13
2,411.0	0.11	203.40	2,411.0	2.2	2.4	1.5	0.12
2,511.0	0.07	23.78	2,511.0	2.2	2.3	1.4	0.18
2,611.0	0.14	317.03	2,611.0	2.4	2.3	1.6	0.13
2,711.0	0.28	300.88	2,711.0	2.6	2.0	1.9	0.15
2,811.0	0.40	309.36	2,811.0	2.9	1.5	2.3	0.13
2,911.0	0.53	315.27	2,911.0	3.5	0.9	3.0	0.14
3,011.0	0.56	297.85	3,011.0	4.0	0.2	3.8	0.17
3,111.0	0.71	316.79	3,111.0	4.7	-0.7	4.7	0.26
3,211.0	0.55	317.20	3,211.0	5.5	-1.4	5.7	0.16
3,311.0	0.46	317.61	3,311.0	6.2	-2.0	6.5	0.09
3,411.0	0.48	305.39	3,411.0	6.7	-2.7	7.2	0.10
3,511.0	0.37	312.72	3,511.0	7.2	-3.2	7.8	0.12
3,611.0	0.45	327.01	3,611.0	7.7	-3.7	8.5	0.13
3,711.0	0.46	314.35	3,710.9	8.3	-4.2	9.2	0.10
3,811.0	0.55	310.06	3,810.9	8.9	-4.8	9.9	0.10
3,911.0	0.58	303.80	3,910.9	9.5	-5.6	10.7	0.07
4,011.0	0.65	302.91	4,010.9	10.1	-6.5	11.6	0.07
4,111.0	2.58	269.35	4,110.9	10.4	-9.3	12.6	2.07
4,211.0	4.99	262.99	4,210.7	9.8	-15.8	14.1	2.44
4,311.0	3.28	239.68	4,310.4	7.8	-22.6	14.2	2.36
4,411.0	6.94	255.20	4,410.0	4.9	-30.9	13.8	3.88
4,511.0	9.51	262.67	4,509.0	2.3	-45.0	15.5	2.78
4,611.0	8.97	259.38	4,607.7	-0.2	-60.8	17.8	0.76
4,711.0	8.40	247.16	4,706.5	-4.5	-75.2	18.0	1.93
4,811.0	9.94	250.24	4,805.2	-10.3	-90.1	16.9	1.62
4,911.0	15.01	243.13	4,902.9	-19.0	-109.8	14.3	5.29
5,011.0	18.96	236.93	4,998.5	-33.8	-134.9	7.7	4.34
5,111.0	21.25	234.33	5,092.4	-53.2	-163.3	-2.5	2.46
5,211.0	20.87	238.88	5,185.7	-73.0	-193.2	-12.5	1.68
5,311.0	22.02	240.12	5,278.8	-91.5	-224.7	-20.9	1.24
5,411.0	17.03	250.53	5,373.0	-105.7	-254.8	-25.6	6.07



JUN 26 2015



EOW Completion Report



**Company:** Antero Resources  
**Project:** Doddridge County WV  
**Site:** Cline Pad /Nickers/ Farrow/ Gearhart/Carr  
**Well:** Nickers Unit 2H  
**Wellbore:** Original Wellpath  
**Design:** As Drilled

**Local Co-ordinate Reference:** Well Nickers Unit 2H  
**TVD Reference:** Nickers 2H 1096 GL + 24 KB @ 1120.0usft  
**MD Reference:** Nickers 2H 1096 GL + 24 KB @ 1120.0usft  
**North Reference:** Grid  
**Survey Calculation Method:** Minimum Curvature  
**Database:** Oklahoma District

Survey

MD (usft)	Inc (°)	Azi (azimuth) (°)	TVD (usft)	N/S (usft)	E/W (usft)	V. Sec (usft)	DLeg (°/100usft)
5,511.0	16.19	264.34	5,468.9	-112.0	-282.5	-23.3	4.03
5,611.0	17.25	259.26	5,564.7	-116.1	-311.0	-18.9	1.80
5,711.0	21.01	252.42	5,659.2	-124.3	-342.6	-17.3	4.37
5,811.0	23.02	240.24	5,751.9	-139.5	-376.7	-21.7	4.98
5,911.0	17.64	235.84	5,845.6	-157.7	-406.3	-30.3	5.59
6,007.0	11.37	233.89	5,938.5	-171.4	-426.0	-37.7	6.55
6,038.0	9.46	245.18	5,969.0	-174.3	-430.7	-39.0	8.99
6,069.0	11.00	260.72	5,999.5	-175.9	-436.0	-38.9	10.15
6,100.0	13.76	262.48	6,029.8	-176.8	-442.6	-37.9	8.99
6,132.0	16.92	261.78	6,060.7	-178.0	-450.9	-36.5	9.89
6,163.0	19.65	261.86	6,090.1	-179.4	-460.6	-35.0	8.81
6,195.0	21.60	261.27	6,120.1	-181.0	-471.7	-33.3	6.13
6,226.0	23.97	261.29	6,148.6	-182.8	-483.6	-31.5	7.65
6,257.0	27.90	261.34	6,176.5	-184.9	-497.0	-29.5	12.68
6,289.0	31.26	261.16	6,204.3	-187.3	-512.6	-27.2	10.50
6,320.0	33.33	260.87	6,230.5	-189.9	-528.9	-24.8	6.70
6,351.0	33.87	259.47	6,256.4	-192.8	-545.8	-22.6	3.05
6,382.0	33.84	259.49	6,282.1	-196.0	-562.8	-20.6	0.10
6,414.0	34.31	260.90	6,308.6	-199.0	-580.5	-18.2	2.87
6,445.0	35.58	264.17	6,334.0	-201.3	-598.1	-15.2	7.30
6,476.0	35.70	264.72	6,359.2	-203.1	-616.1	-11.6	1.10
6,507.0	35.39	265.39	6,384.4	-204.6	-634.0	-7.7	1.61
6,539.0	34.53	264.12	6,410.7	-206.3	-652.3	-3.9	3.52
6,570.0	34.47	264.99	6,436.2	-208.0	-669.8	-0.4	1.60
6,602.0	34.70	265.33	6,462.6	-209.5	-687.9	3.5	0.94
6,633.0	35.19	267.70	6,488.0	-210.6	-705.6	7.8	4.66
6,664.0	35.98	269.30	6,513.2	-211.0	-723.6	12.6	3.94
6,695.0	36.75	269.62	6,538.1	-211.2	-742.0	17.9	2.56
6,727.0	38.41	269.04	6,563.5	-211.4	-761.5	23.5	5.30
6,758.0	39.65	269.32	6,587.6	-211.7	-781.0	29.0	4.04
6,789.0	40.01	269.01	6,611.4	-212.0	-800.9	34.6	1.33
6,800.0	40.44	268.83	6,619.8	-212.1	-808.0	36.6	4.04
<b>Sycamore</b>							
6,821.0	41.26	268.50	6,635.7	-212.5	-821.7	40.3	4.04
6,852.0	42.00	268.88	6,658.8	-212.9	-842.3	46.0	2.52
6,883.0	43.17	268.17	6,681.7	-213.5	-863.3	51.7	4.08
6,915.0	44.92	265.22	6,704.7	-214.8	-885.5	57.0	8.42
6,946.0	46.36	265.61	6,726.3	-216.5	-907.6	61.9	4.73
6,977.0	46.25	267.60	6,747.8	-217.9	-929.9	67.2	4.65
7,008.0	46.38	269.55	6,769.2	-218.4	-952.4	73.3	4.57
7,013.0	46.57	270.25	6,772.6	-218.4	-956.0	74.4	10.88
<b>Middlesex</b>							
7,040.0	47.65	273.98	6,791.0	-217.7	-975.7	80.9	10.88
7,071.0	49.63	277.98	6,811.5	-215.3	-998.9	90.1	11.60
7,102.0	51.68	283.20	6,831.1	-210.8	-1,022.4	101.3	14.60

RECEIVED

JUN 26 2015



EOW Completion Report



WV GEOLOGICAL SURVEY  
MORGANTOWN, WV

**Company:** Antero Resources  
**Project:** Doddridge County WV  
**Site:** Cline Pad /Nickers/ Farrow/ Gearhart/Carr  
**Well:** Nickers Unit 2H  
**Wellbore:** Original Wellpath  
**Design:** As Drilled

**Local Co-ordinate Reference:** Well Nickers Unit 2H  
**TVD Reference:** Nickers 2H 1096 GL + 24 KB @ 1120.0usft  
**MD Reference:** Nickers 2H 1096 GL + 24 KB @ 1120.0usft  
**North Reference:** Grid  
**Survey Calculation Method:** Minimum Curvature  
**Database:** Oklahoma District

Survey

MD (usft)	Inc (°)	Azi (azimuth) (°)	TVD (usft)	N/S (usft)	EW (usft)	V. Sec (usft)	DLeg (°/100usft)
7,133.0	52.75	286.91	6,850.1	-204.5	-1,046.1	114.4	10.07
7,165.0	53.60	290.28	6,869.3	-196.3	-1,070.3	129.4	8.84
7,196.0	54.75	294.94	6,887.5	-186.6	-1,093.5	145.5	12.74
7,228.0	56.53	298.81	6,905.5	-174.7	-1,117.1	163.8	11.43
7,259.0	57.57	302.23	6,922.4	-161.5	-1,139.5	183.1	9.85
7,290.0	59.91	306.49	6,938.5	-146.5	-1,161.3	203.9	13.96
7,300.0	60.93	307.43	6,943.4	-141.3	-1,168.3	210.9	13.10
<b>Tully</b>							
7,321.0	63.10	309.35	6,953.3	-129.8	-1,182.8	226.2	13.10
7,353.0	65.11	311.00	6,967.3	-111.2	-1,204.8	250.5	7.81
7,384.0	67.96	313.43	6,979.6	-92.1	-1,225.9	274.9	11.67
7,415.0	70.25	315.03	6,990.7	-71.9	-1,246.6	300.4	8.82
7,446.0	71.39	317.26	7,000.8	-50.8	-1,266.9	326.6	7.73
7,478.0	72.36	319.86	7,010.8	-28.0	-1,287.0	354.3	8.30
7,505.0	71.45	322.19	7,019.2	-8.0	-1,303.2	378.1	8.87
<b>Marcellus</b>							
7,509.0	71.32	322.54	7,020.5	-5.0	-1,305.5	381.7	8.87
7,540.0	72.43	325.07	7,030.1	18.7	-1,322.9	409.5	8.54
7,572.0	75.90	327.72	7,038.8	44.4	-1,339.9	439.1	13.45
7,603.0	79.59	329.02	7,045.4	70.2	-1,355.8	468.4	12.59
7,634.0	83.03	331.05	7,050.1	96.7	-1,371.1	498.3	12.85
7,666.0	85.89	334.61	7,053.2	125.0	-1,385.6	529.6	14.23
7,697.0	86.92	337.96	7,055.1	153.4	-1,398.1	560.4	11.29
7,728.0	88.53	341.01	7,056.4	182.4	-1,408.9	591.3	11.12
7,760.0	89.70	342.81	7,056.9	212.8	-1,418.8	623.3	6.71
7,885.0	91.21	344.81	7,055.9	332.8	-1,453.7	748.3	2.00
7,979.0	87.22	342.14	7,057.2	422.9	-1,480.4	842.2	5.11
8,073.0	87.62	342.30	7,061.4	512.3	-1,509.1	936.1	0.46
8,167.0	89.50	342.50	7,063.8	601.9	-1,537.5	1,030.1	2.01
8,261.0	90.57	342.91	7,063.7	691.6	-1,565.4	1,124.1	1.22
8,356.0	90.44	342.32	7,062.9	782.3	-1,593.8	1,219.1	0.64
8,450.0	90.03	341.54	7,062.5	871.7	-1,623.0	1,313.1	0.94
8,544.0	90.47	342.39	7,062.1	961.0	-1,652.1	1,407.0	1.02
8,638.0	90.91	342.76	7,060.9	1,050.7	-1,680.2	1,501.0	0.61
8,732.0	89.19	341.24	7,060.9	1,140.1	-1,709.3	1,595.0	2.44
8,826.0	90.33	342.81	7,061.2	1,229.5	-1,738.3	1,689.0	2.06
8,920.0	91.27	342.44	7,059.9	1,319.2	-1,766.4	1,783.0	1.07
9,014.0	89.63	342.27	7,059.2	1,408.8	-1,794.8	1,877.0	1.75
9,108.0	90.64	345.43	7,059.0	1,499.1	-1,821.0	1,971.0	3.53
9,202.0	89.77	341.73	7,058.6	1,589.2	-1,847.6	2,064.9	4.04
9,296.0	92.11	342.69	7,057.1	1,678.7	-1,876.3	2,158.9	2.69
9,390.0	93.35	342.61	7,052.6	1,768.3	-1,904.3	2,252.8	1.32
9,484.0	90.70	344.25	7,049.3	1,858.4	-1,931.1	2,346.7	3.31
9,578.0	89.53	343.72	7,049.1	1,948.7	-1,957.0	2,440.7	1.37



# RECEIVED

JUN 26 2015



WV GEOLOGICAL SURVEY  
MORGANTOWN, WV

## EOW Completion Report



**Company:** Antero Resources  
**Project:** Doddridge County WV  
**Site:** Cline Pad /Nickers/ Farrow/ Gearhart/Carr  
**Well:** Nickers Unit 2H  
**Wellbore:** Original Wellpath  
**Design:** As Drilled

**Local Co-ordinate Reference:** Well Nickers Unit 2H  
**TVD Reference:** Nickers 2H 1096 GL + 24 KB @ 1120.0usft  
**MD Reference:** Nickers 2H 1096 GL + 24 KB @ 1120.0usft  
**North Reference:** Grid  
**Survey Calculation Method:** Minimum Curvature  
**Database:** Oklahoma District

### Survey

MD (usft)	Inc (°)	Azi (azimuth) (°)	TVD (usft)	N/S (usft)	EW (usft)	V. Sec (usft)	DLeg (°/100usft)
9,672.0	90.50	343.09	7,049.1	2,038.8	-1,983.8	2,534.7	1.23
9,765.0	89.46	343.08	7,049.1	2,127.8	-2,010.9	2,627.7	1.12
9,859.0	91.78	344.78	7,048.1	2,218.1	-2,036.9	2,721.7	3.06
9,953.0	89.06	342.10	7,047.4	2,308.2	-2,063.7	2,815.6	4.06
10,047.0	90.37	342.80	7,047.9	2,397.8	-2,092.0	2,909.6	1.58
10,142.0	89.13	342.32	7,048.3	2,488.4	-2,120.5	3,004.6	1.40
10,236.0	90.74	343.44	7,048.4	2,578.2	-2,148.2	3,098.6	2.09
10,330.0	87.92	342.66	7,049.5	2,668.1	-2,175.6	3,192.6	3.11
10,424.0	88.26	343.01	7,052.6	2,757.9	-2,203.3	3,286.5	0.52
10,518.0	88.89	342.50	7,055.0	2,847.6	-2,231.2	3,380.5	0.86
10,609.0	90.13	343.23	7,055.7	2,934.6	-2,258.0	3,471.5	1.58
10,701.0	90.30	345.01	7,055.4	3,023.1	-2,283.1	3,563.5	1.94
10,792.0	89.46	345.53	7,055.6	3,111.1	-2,306.3	3,654.4	1.09
10,883.0	91.61	348.38	7,054.7	3,199.7	-2,326.8	3,745.1	3.92
10,974.0	88.73	346.43	7,054.5	3,288.5	-2,346.7	3,835.8	3.82
11,066.0	89.87	345.94	7,055.6	3,377.9	-2,368.6	3,927.7	1.35
11,156.0	88.02	344.49	7,057.3	3,464.9	-2,391.6	4,017.5	2.61
11,246.0	88.33	343.33	7,060.1	3,551.3	-2,416.5	4,107.5	1.33
11,338.0	90.00	340.38	7,061.5	3,638.7	-2,445.2	4,199.4	3.68
11,429.0	91.31	341.36	7,060.4	3,724.6	-2,475.0	4,290.4	1.80
11,521.0	91.47	341.45	7,058.2	3,811.8	-2,504.3	4,382.3	0.20
11,612.0	90.64	340.98	7,056.5	3,898.0	-2,533.6	4,473.3	1.05
11,706.0	91.51	340.87	7,054.7	3,986.8	-2,564.3	4,567.2	0.93
11,800.0	89.46	339.08	7,054.0	4,075.1	-2,596.5	4,661.1	2.90
11,894.0	89.80	339.81	7,054.6	4,163.1	-2,629.5	4,754.9	0.86
11,988.0	90.57	339.26	7,054.3	4,251.2	-2,662.4	4,848.8	1.01
12,082.0	88.76	342.96	7,054.8	4,340.1	-2,692.8	4,942.7	4.38
12,176.0	88.66	343.44	7,056.9	4,430.0	-2,720.0	5,036.7	0.52
12,270.0	90.80	343.98	7,057.4	4,520.3	-2,746.3	5,130.7	2.35
12,364.0	90.40	342.51	7,056.4	4,610.3	-2,773.4	5,224.7	1.62
12,458.0	90.40	342.48	7,055.7	4,699.9	-2,801.7	5,318.7	0.03
12,552.0	90.57	340.84	7,054.9	4,789.1	-2,831.3	5,412.6	1.75
12,645.0	92.02	342.26	7,052.8	4,877.3	-2,860.7	5,505.6	2.18
12,740.0	92.11	342.22	7,049.4	4,967.7	-2,889.7	5,600.5	0.10
12,833.0	91.04	342.58	7,046.8	5,056.3	-2,917.8	5,693.5	1.21
12,927.0	90.67	340.64	7,045.4	5,145.5	-2,947.4	5,787.4	2.10
13,021.0	89.83	340.57	7,045.0	5,234.2	-2,978.6	5,881.4	0.90
13,115.0	90.20	341.33	7,045.0	5,323.0	-3,009.3	5,975.3	0.90
13,209.0	87.36	342.50	7,047.0	5,412.4	-3,038.5	6,069.3	3.27
13,303.0	89.33	343.78	7,049.7	5,502.3	-3,065.7	6,163.2	2.50
13,397.0	90.03	343.17	7,050.3	5,592.4	-3,092.5	6,257.2	0.99
13,491.0	90.60	342.68	7,049.7	5,682.3	-3,120.1	6,351.2	0.80
13,585.0	89.40	343.81	7,049.7	5,772.3	-3,147.2	6,445.2	1.75
13,679.0	90.30	344.20	7,050.0	5,862.6	-3,173.1	6,539.2	1.04
13,773.0	89.60	344.32	7,050.1	5,953.1	-3,198.6	6,633.2	0.76

JUN 26 2015



EOW Completion Report



Company: Antero Resources  
 Project: Doddridge County WV  
 Site: Cline Pad /Nickers/ Farrow/ Gearhart/Carr  
 Well: Nickers Unit 2H  
 Wellbore: Original Wellpath  
 Design: As Drilled

Local Co-ordinate Reference: Well Nickers Unit 2H  
 TVD Reference: Nickers 2H 1096 GL + 24 KB @ 1120.0usft  
 MD Reference: Nickers 2H 1096 GL + 24 KB @ 1120.0usft  
 North Reference: Grid  
 Survey Calculation Method: Minimum Curvature  
 Database: Oklahoma District

Survey

MD (usft)	Inc (°)	Azi (azimuth) (°)	TVD (usft)	N/S (usft)	E/W (usft)	V. Sec (usft)	DLeg (°/100usft)
13,867.0	91.20	345.12	7,049.4	6,043.8	-3,223.3	6,727.1	1.90
13,961.0	89.97	343.75	7,048.4	6,134.3	-3,248.6	6,821.1	1.96
14,055.0	90.84	343.38	7,047.8	6,224.5	-3,275.2	6,915.0	1.01
14,149.0	90.50	343.09	7,046.7	6,314.5	-3,302.3	7,009.0	0.48
14,244.0	90.13	343.30	7,046.2	6,405.4	-3,329.7	7,104.0	0.45
14,337.0	90.57	343.10	7,045.6	6,494.4	-3,356.6	7,197.0	0.52
14,432.0	90.27	342.48	7,044.9	6,585.2	-3,384.7	7,292.0	0.73
14,525.0	90.54	342.08	7,044.2	6,673.8	-3,413.0	7,385.0	0.52
14,619.0	89.78	342.86	7,044.0	6,763.4	-3,441.3	7,479.0	1.16
14,713.0	89.93	342.21	7,044.2	6,853.1	-3,469.5	7,573.0	0.71
14,807.0	91.36	341.81	7,043.2	6,942.5	-3,498.6	7,667.0	1.58
14,901.0	89.34	342.42	7,042.6	7,031.9	-3,527.4	7,761.0	2.24
14,995.0	88.90	342.51	7,044.0	7,121.5	-3,555.8	7,855.0	0.48
15,089.0	88.64	342.16	7,046.0	7,211.1	-3,584.3	7,948.9	0.46
15,184.0	91.89	343.57	7,045.6	7,301.9	-3,612.3	8,043.9	3.73
15,278.0	92.77	343.65	7,041.8	7,392.0	-3,638.8	8,137.8	0.94
15,372.0	92.59	342.16	7,037.4	7,481.7	-3,666.4	8,231.7	1.59
15,420.0	91.98	341.28	7,035.5	7,527.2	-3,681.4	8,279.7	2.23
15,473.0	91.98	341.28	7,033.6	7,577.4	-3,698.4	8,332.6	0.00

Design Annotations

Measured Depth (usft)	Vertical Depth (usft)	Local Coordinates		Comment
		+N/-S (usft)	+E/-W (usft)	
6,800.0	6,619.8	-212.1	-808.0	Sycamore
7,013.0	6,772.6	-218.4	-956.0	Middlesex
7,300.0	6,943.4	-141.3	-1,168.3	Tully
7,505.0	7,019.2	-8.0	-1,303.2	Marcellus

Checked By: \_\_\_\_\_ Approved By: \_\_\_\_\_ Date: \_\_\_\_\_