



Antero Resources  
 Leggett Unit 1H  
 Doddridge County WV  
 Northing: 14248469.44  
 Easting: 1679238.07  
 As Drilled

**REFERENCE INFORMATION**

Coordinate Reference: Well Leggett Unit 1H, Grid North  
 Vertical TVD Reference: POC2 Leggett 1H 900 GL, + 19.45 @ 1008.00ft  
 Measuring Depth Reference: POC2 Leggett 1H 900 GL, + 19.45 @ 1008.00ft  
 Calculation Method: Minimum Curvature

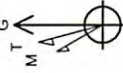
**PROJECT DETAILS:** Doddridge County WV  
 Geologic System: Universal Transverse Mercator (US Survey Feet)  
 Datum: NAD 1983 (NAD83 CONUS)  
 Ellipsoid: GRS80  
 Zone: Zone 17N (84 W to 78 W)  
 System Datum: Mean Sea Level

Genie Lightfoot  
 11:12, July 08 2014  
 Scientific Drilling  
 421 South Eagle Lane  
 Oklahoma City, OK



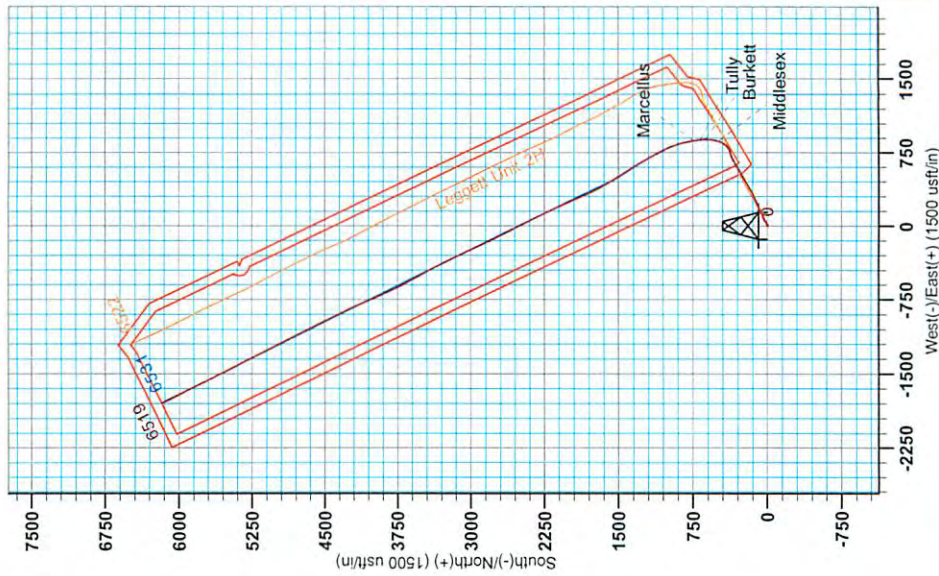
Scientific Drilling

**WELL DETAILS:** Leggett Unit 1H  
 Ground Level: 990.0  
 Easting: 1679238.07  
 Northing: 14248469.44  
 Longitude: 80° 51' 46.417 W  
 Latitude: 39° 14' 15.200 N  
 Slot



To convert Magnetic North to Grid, Subtract 6.47°  
 To convert True North to Grid, Subtract 0.00°  
 Azimuth to Grid North  
 True North: -0.00°  
 Magnetic North: -6.47°

Magnetic Field  
 Strength: 52337.6nT  
 Dip Angle: 66.83°  
 Date: 12/20/2013  
 Model: IGRF2010

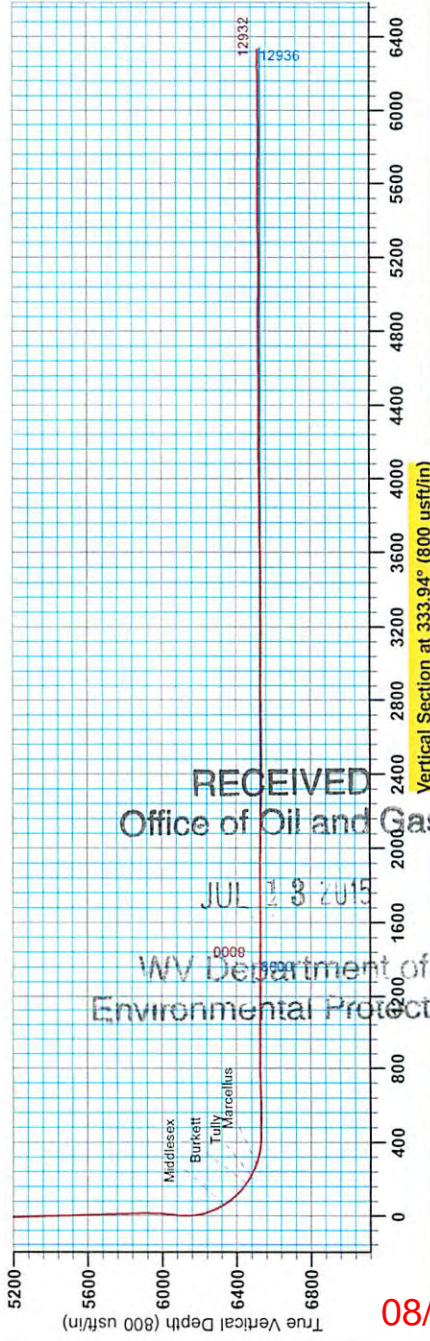


**LEGEND**

- Leggett Unit 2H, Original Wellpath, As Drilled V0
- Leggett Unit 1H, Original Wellpath, Plan 6 V0
- As Drilled

**DESIGN TARGET DETAILS**

Name	TVD	+N/S	+E/W	Northing	Easting	Latitude	Longitude
SHL Leggett Unit 1H	0.0	0.0	0.0	0.014248469 43	1679238 0739	14° 15' 29.0 N	80° 51' 46.417 W
Actual BHL Leggett Unit 1H	16519.1	6169.9	-1797.9	914254639.37	1677440.2139	15° 16' 32.3 N	80° 52' 9.162 W



08/14/2015



# Antero Resources

Doddridge County WV  
Leggett/ Pike Pad  
Leggett Unit 1H  
Original Wellpath

Design: As Drilled

## EOW Completion Report

08 July, 2014

RECEIVED  
Office of Oil and Gas

JUL 13 2015

WV Department of  
Environmental Protection



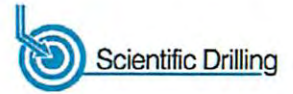
**Scientific Drilling**

08//14/2015





EOW Completion Report



<b>Company:</b>	Antero Resources	<b>Local Co-ordinate Reference:</b>	Well Leggett Unit 1H
<b>Project:</b>	Doddridge County WV	<b>TVD Reference:</b>	P522 Leggett 1H 990 GL + 18 KB @ 1008.0usft
<b>Site:</b>	Leggett/ Pike Pad	<b>MD Reference:</b>	P522 Leggett 1H 990 GL + 18 KB @ 1008.0usft
<b>Well:</b>	Leggett Unit 1H	<b>North Reference:</b>	Grid
<b>Wellbore:</b>	Original Wellpath	<b>Survey Calculation Method:</b>	Minimum Curvature
<b>Design:</b>	As Drilled	<b>Database:</b>	Oklahoma District

<b>Project</b>	Doddridge County WV, McClellan District		
<b>Map System:</b>	Universal Transverse Mercator (US Survey Feet)	<b>System Datum:</b>	Mean Sea Level
<b>Geo Datum:</b>	NAD 1927 (NADCON CONUS)		
<b>Map Zone:</b>	Zone 17N (84 W to 78 W)		

<b>Site</b>	Leggett/ Pike Pad		
<b>Site Position:</b>		<b>Northing:</b>	14,248,467.61 usft
<b>From:</b>	Map	<b>Easting:</b>	1,679,248.10 usft
<b>Position Uncertainty:</b>	0.0 usft	<b>Slot Radius:</b>	13-3/16"
		<b>Latitude:</b>	39° 14' 15.272 N
		<b>Longitude:</b>	80° 51' 46.289 W
		<b>Grid Convergence:</b>	0.09 °

<b>Well</b>	Leggett Unit 1H					
<b>Well Position</b>	<b>+N/-S</b>	0.0 usft	<b>Northing:</b>	14,248,469.44 usft	<b>Latitude:</b>	39° 14' 15.290 N
	<b>+E/-W</b>	0.0 usft	<b>Easting:</b>	1,679,238.07 usft	<b>Longitude:</b>	80° 51' 46.417 W
<b>Position Uncertainty</b>	2.0 usft		<b>Wellhead Elevation:</b>	1,008.0 usft	<b>Ground Level:</b>	990.0 usft

<b>Wellbore</b>	Original Wellpath		
-----------------	-------------------	--	--

Magnetics	Model Name	Sample Date	Declination (°)	Dip Angle (°)	Field Strength (nT)
	IGRF2010	12/20/2013	-8.39	66.83	52,338

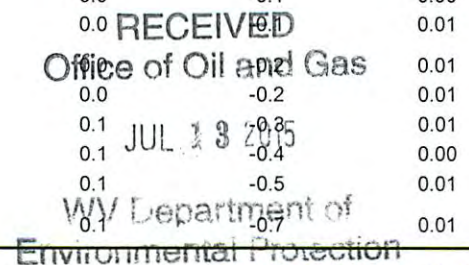
<b>Design</b>	As Drilled		
---------------	------------	--	--

<b>Audit Notes:</b>			
<b>Version:</b>	1.0	<b>Phase:</b>	ACTUAL
		<b>Tie On Depth:</b>	0.0

Vertical Section:	Depth From (TVD) (usft)	+N/-S (usft)	+E/-W (usft)	Direction (°)
	0.0	0.0	0.0	333.94

Survey Program	Date	7/8/2014			
From (usft)	To (usft)	Survey (Wellbore)	Tool Name	Description	
107.0	6,023.0	Survey #6 Final Gyro (Original Wellpath)	SDI Standard Keeper	Scientific Drilling Intl. Standard Wireline Keeper	
6,050.0	12,932.0	Survey #7 MWD (Original Wellpath)	SDI MWD	Scientific Drilling Intl. MWD - Standard ver 1.0.1	

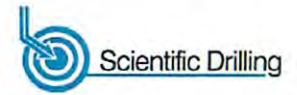
Survey	MD (usft)	Inc (°)	Azi (azimuth) (°)	TVD (usft)	N/S (usft)	E/W (usft)	V. Sec (usft)	DLeg (°/100usft)
	0.0	0.00	0.00	0.0	0.0	0.0	0.0	0.00
	107.0	0.01	169.60	107.0	0.0	0.0	0.0	0.01
	207.0	0.02	169.60	207.0	0.0	0.0	0.0	0.01
	307.0	0.02	169.60	307.0	-0.1	0.0	-0.1	0.00
	407.0	0.03	169.60	407.0	-0.1	0.0	-0.1	0.01
	507.0	0.04	169.60	507.0	-0.2	0.0	-0.2	0.01
	607.0	0.05	169.60	607.0	-0.2	0.0	-0.2	0.01
	707.0	0.06	169.60	707.0	-0.3	0.1	-0.3	0.01
	807.0	0.06	169.60	807.0	-0.4	0.1	-0.4	0.00
	907.0	0.07	169.60	907.0	-0.6	0.1	-0.5	0.01
	1,007.0	0.08	169.60	1,007.0	-0.7	0.1	-0.7	0.01







EOW Completion Report



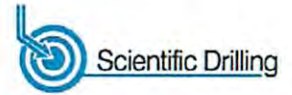
<b>Company:</b>	Antero Resources	<b>Local Co-ordinate Reference:</b>	Well Leggett Unit 1H
<b>Project:</b>	Doddridge County WV	<b>TVD Reference:</b>	P522 Leggett 1H 990 GL + 18 KB @ 1008.0usft
<b>Site:</b>	Leggett/ Pike Pad	<b>MD Reference:</b>	P522 Leggett 1H 990 GL + 18 KB @ 1008.0usft
<b>Well:</b>	Leggett Unit 1H	<b>North Reference:</b>	Grid
<b>Wellbore:</b>	Original Wellpath	<b>Survey Calculation Method:</b>	Minimum Curvature
<b>Design:</b>	As Drilled	<b>Database:</b>	Oklahoma District

Survey									
MD (usft)	Inc (°)	Azi (azimuth) (°)	TVD (usft)	N/S (usft)	E/W (usft)	V. Sec (usft)	DLeg (°/100usft)		
1,107.0	0.09	169.60	1,107.0	-0.8	0.2	-0.8	0.01		
1,207.0	0.10	169.60	1,207.0	-1.0	0.2	-1.0	0.01		
1,307.0	0.10	169.60	1,307.0	-1.2	0.2	-1.1	0.00		
1,407.0	0.11	169.60	1,407.0	-1.3	0.2	-1.3	0.01		
1,507.0	0.12	169.60	1,507.0	-1.5	0.3	-1.5	0.01		
1,607.0	0.13	169.60	1,607.0	-1.8	0.3	-1.7	0.01		
1,707.0	0.13	169.60	1,707.0	-2.0	0.4	-1.9	0.00		
1,807.0	0.14	169.60	1,807.0	-2.2	0.4	-2.2	0.01		
1,907.0	0.15	169.60	1,907.0	-2.5	0.5	-2.4	0.01		
2,007.0	0.16	169.60	2,007.0	-2.7	0.5	-2.7	0.01		
2,107.0	0.17	169.60	2,107.0	-3.0	0.6	-2.9	0.01		
2,207.0	0.17	169.60	2,207.0	-3.3	0.6	-3.2	0.00		
2,307.0	0.18	169.60	2,307.0	-3.6	0.7	-3.5	0.01		
2,407.0	0.19	131.74	2,407.0	-3.9	0.8	-3.8	0.12		
2,507.0	0.29	175.72	2,507.0	-4.2	1.0	-4.2	0.20		
2,607.0	0.25	171.58	2,607.0	-4.7	1.0	-4.7	0.04		
2,707.0	0.27	185.59	2,707.0	-5.2	1.0	-5.1	0.07		
2,807.0	0.30	203.42	2,807.0	-5.6	0.9	-5.4	0.09		
2,907.0	0.26	211.02	2,907.0	-6.1	0.7	-5.7	0.05		
3,007.0	0.30	194.66	3,007.0	-6.5	0.5	-6.1	0.09		
3,107.0	0.30	188.50	3,107.0	-7.0	0.4	-6.5	0.03		
3,207.0	0.40	184.02	3,207.0	-7.6	0.3	-7.0	0.10		
3,307.0	0.40	198.42	3,307.0	-8.3	0.2	-7.5	0.10		
3,407.0	0.41	198.96	3,407.0	-9.0	0.0	-8.0	0.01		
3,507.0	0.37	210.83	3,507.0	-9.6	-0.3	-8.5	0.09		
3,607.0	0.42	226.14	3,607.0	-10.1	-0.8	-8.8	0.12		
3,707.0	0.23	192.76	3,707.0	-10.6	-1.1	-9.0	0.26		
3,807.0	0.13	119.08	3,807.0	-10.8	-1.0	-9.3	0.23		
3,907.0	3.12	58.12	3,906.9	-9.4	1.4	-9.1	3.06		
4,007.0	6.68	58.70	4,006.5	-5.0	8.7	-8.3	3.56		
4,107.0	9.94	51.25	4,105.5	3.4	20.4	-5.9	3.43		
4,207.0	12.76	58.77	4,203.5	14.6	36.6	-3.0	3.18		
4,307.0	13.84	65.86	4,300.8	25.2	56.9	-2.4	1.95		
4,407.0	16.60	62.59	4,397.3	36.7	80.5	-2.4	2.89		
4,507.0	19.04	64.59	4,492.5	50.2	107.9	-2.3	2.52		
4,607.0	21.81	68.62	4,586.2	64.0	140.0	-4.0	3.11		
4,707.0	24.21	68.03	4,678.3	78.5	176.3	-7.0	2.41		
4,807.0	25.69	65.25	4,768.9	95.2	215.0	-8.9	1.89		
4,907.0	24.89	63.04	4,859.4	113.8	253.4	-9.1	1.24		
5,007.0	24.34	66.59	4,950.3	131.6	291.1	-8.7	1.58		
5,107.0	25.36	65.18	5,041.0	148.7	329.5	-11.1	1.18		
5,207.0	25.63	61.05	5,131.3	168.2	367.8	-10.5	1.80		
5,307.0	26.69	58.97	5,221.0	190.2	406.0	-7.5	1.40		
5,407.0	26.81	58.54	5,310.3	213.6	444.5	-3.4	0.23		

RECEIVED  
Office of Oil and Gas  
JUL 13 2015



EOW Completion Report



<b>Company:</b>	Antero Resources	<b>Local Co-ordinate Reference:</b>	Well Leggett Unit 1H
<b>Project:</b>	Doddridge County WV	<b>TVD Reference:</b>	P522 Leggett 1H 990 GL + 18 KB @ 1008.0usft
<b>Site:</b>	Leggett/ Pike Pad	<b>MD Reference:</b>	P522 Leggett 1H 990 GL + 18 KB @ 1008.0usft
<b>Well:</b>	Leggett Unit 1H	<b>North Reference:</b>	Grid
<b>Wellbore:</b>	Original Wellpath	<b>Survey Calculation Method:</b>	Minimum Curvature
<b>Design:</b>	As Drilled	<b>Database:</b>	Oklahoma District

Survey

MD (usft)	Inc (°)	Azi (azimuth) (°)	TVD (usft)	N/S (usft)	E/W (usft)	V. Sec (usft)	DLeg (°/100usft)
5,507.0	25.80	60.87	5,400.0	235.9	482.7	-0.1	1.44
5,607.0	25.25	61.88	5,490.2	256.6	520.6	1.8	0.70
5,707.0	25.66	59.82	5,580.5	277.5	558.1	4.1	0.98
5,807.0	24.95	57.81	5,670.9	299.7	594.7	8.0	1.11
5,907.0	21.22	59.27	5,762.9	320.1	628.1	11.7	3.77
6,007.0	20.36	60.96	5,856.4	337.8	658.8	14.1	1.05
6,023.0	20.56	61.82	5,871.4	340.5	663.7	14.3	2.26
6,050.0	20.37	63.28	5,896.7	344.9	672.1	14.5	2.02
6,081.0	20.55	66.16	5,925.7	349.5	681.9	14.4	3.30
6,112.0	21.92	67.24	5,954.6	353.9	692.2	13.8	4.60
6,143.0	24.04	68.85	5,983.2	358.4	703.5	13.0	7.13
6,174.0	25.64	71.38	6,011.3	362.9	715.7	11.6	6.20
6,204.0	27.04	76.88	6,038.2	366.5	728.5	9.2	9.37
6,235.0	28.17	80.00	6,065.6	369.4	742.6	5.6	5.92
6,266.0	28.64	73.02	6,092.9	372.8	756.9	2.4	10.81
6,297.0	30.15	66.30	6,119.9	378.1	771.1	0.9	11.69
6,328.0	32.04	59.93	6,146.5	385.4	785.4	1.2	12.23
6,359.0	34.24	54.79	6,172.5	394.5	799.6	3.1	11.51
6,390.0	35.94	48.99	6,197.8	405.5	813.6	6.8	12.07
6,421.0	36.59	42.74	6,222.8	418.3	826.8	12.5	12.10
6,452.0	37.01	36.46	6,247.7	432.6	838.6	20.2	12.21
6,482.0	37.75	30.38	6,271.5	447.8	848.6	29.4	12.54
6,513.0	38.40	24.93	6,295.9	464.7	857.4	40.7	11.04
6,544.0	38.90	19.45	6,320.1	482.6	864.7	53.6	11.16
6,560.0	40.11	17.14	6,332.5	492.2	867.9	60.9	11.90
<b>Middlesex</b>							
6,575.0	41.28	15.07	6,343.9	501.6	870.6	68.2	11.90
6,606.0	43.67	10.95	6,366.7	522.0	875.3	84.4	11.83
6,637.0	46.29	7.25	6,388.6	543.7	878.8	102.3	11.94
6,668.0	49.54	4.49	6,409.4	566.5	881.1	121.9	12.39
6,698.0	53.28	2.22	6,428.1	589.9	882.5	142.3	13.80
6,729.0	56.72	0.67	6,445.9	615.3	883.1	164.8	11.83
6,742.0	58.10	359.63	6,452.9	626.3	883.1	174.6	12.58
<b>Burkett</b>							
6,760.0	60.02	358.23	6,462.2	641.7	882.9	188.6	12.58
6,791.0	62.95	355.35	6,477.0	668.9	881.3	213.7	12.49
6,797.0	63.51	354.82	6,479.7	674.2	880.9	218.7	12.18
<b>Tully</b>							
6,822.0	65.86	352.68	6,490.4	696.7	878.4	240.0	12.18
6,853.0	69.39	350.27	6,502.2	725.0	874.1	267.6	13.47
6,868.0	71.03	349.16	6,507.2	738.9	871.6	289.9	14.96
<b>Marcellus</b>							
6,884.0	72.79	348.01	6,512.2	753.8	868.6	295.6	12.96
6,915.0	76.15	348.25	6,520.5	783.1	862.5	324.6	10.86
6,945.0	80.37	347.20	6,526.6	811.8	856.2	353.1	14.48

RECEIVED  
Office of Oil and Gas  
JUL 13 2015  
WV Department of Environmental Protection  
08/14/2015





EOW Completion Report

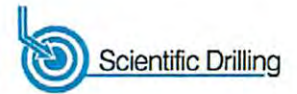


<b>Company:</b>	Antero Resources	<b>Local Co-ordinate Reference:</b>	Well Leggett Unit 1H
<b>Project:</b>	Doddridge County WV	<b>TVD Reference:</b>	P522 Leggett 1H 990 GL + 18 KB @ 1008.0usft
<b>Site:</b>	Leggett/ Pike Pad	<b>MD Reference:</b>	P522 Leggett 1H 990 GL + 18 KB @ 1008.0usft
<b>Well:</b>	Leggett Unit 1H	<b>North Reference:</b>	Grid
<b>Wellbore:</b>	Original Wellpath	<b>Survey Calculation Method:</b>	Minimum Curvature
<b>Design:</b>	As Drilled	<b>Database:</b>	Oklahoma District

Survey

MD (usft)	Inc (°)	Azi (azimuth) (°)	TVD (usft)	N/S (usft)	E/W (usft)	V. Sec (usft)	DLeg (°/100usft)
6,976.0	84.52	346.67	6,530.7	841.7	849.3	383.0	13.49
7,007.0	88.72	345.89	6,532.5	871.7	841.9	413.2	13.78
7,019.0	89.60	344.91	6,532.7	883.4	838.9	425.0	10.98
7,112.0	88.90	335.51	6,533.9	970.8	807.5	517.3	10.13
7,205.0	91.01	333.84	6,534.0	1,054.8	767.7	610.3	2.89
7,297.0	92.15	331.29	6,531.4	1,136.4	725.3	702.2	3.04
7,390.0	90.22	328.21	6,529.5	1,216.7	678.5	795.0	3.91
7,482.0	90.40	327.16	6,529.0	1,294.5	629.3	886.4	1.16
7,575.0	90.04	327.42	6,528.7	1,372.7	579.1	978.8	0.48
7,668.0	89.60	327.60	6,529.0	1,451.2	529.1	1,071.2	0.51
7,760.0	89.96	327.60	6,529.3	1,528.8	479.8	1,162.6	0.39
7,853.0	89.52	329.27	6,529.7	1,608.1	431.1	1,255.2	1.86
7,945.0	90.04	331.73	6,530.1	1,688.2	385.8	1,347.0	2.73
8,038.0	89.96	334.10	6,530.1	1,770.9	343.5	1,440.0	2.55
8,131.0	89.52	335.77	6,530.5	1,855.2	304.1	1,533.0	1.86
8,223.0	90.13	335.16	6,530.8	1,938.9	265.9	1,625.0	0.94
8,316.0	89.43	335.95	6,531.2	2,023.5	227.4	1,717.9	1.13
8,408.0	90.48	335.86	6,531.2	2,107.5	189.8	1,809.9	1.15
8,501.0	89.43	335.33	6,531.3	2,192.2	151.4	1,902.8	1.26
8,593.0	89.96	333.84	6,531.8	2,275.3	111.9	1,994.8	1.72
8,686.0	89.60	333.75	6,532.1	2,358.7	70.9	2,087.8	0.40
8,779.0	88.02	333.05	6,534.1	2,441.9	29.2	2,180.8	1.86
8,874.0	88.11	333.75	6,537.3	2,526.8	-13.3	2,275.7	0.74
8,968.0	90.31	333.57	6,538.6	2,611.0	-55.0	2,369.7	2.35
9,062.0	90.48	333.13	6,537.9	2,695.0	-97.1	2,463.7	0.50
9,156.0	89.43	332.69	6,538.0	2,778.7	-139.9	2,557.7	1.21
9,251.0	90.92	335.95	6,537.7	2,864.3	-181.1	2,652.7	3.77
9,346.0	91.72	335.25	6,535.5	2,950.8	-220.3	2,747.6	1.12
9,441.0	89.52	334.72	6,534.5	3,036.9	-260.5	2,842.6	2.38
9,535.0	89.43	333.75	6,535.4	3,121.5	-301.4	2,936.6	1.04
9,630.0	90.84	334.89	6,535.1	3,207.1	-342.5	3,031.6	1.91
9,723.0	90.22	333.49	6,534.3	3,290.8	-383.0	3,124.5	1.65
9,815.0	90.04	332.87	6,534.1	3,373.0	-424.5	3,216.5	0.70
9,908.0	90.13	330.94	6,533.9	3,455.0	-468.3	3,309.5	2.08
10,000.0	90.13	331.55	6,533.7	3,535.6	-512.6	3,401.4	0.66
10,093.0	89.96	330.94	6,533.6	3,617.2	-557.3	3,494.3	0.68
10,186.0	91.89	331.55	6,532.1	3,698.7	-602.0	3,587.1	2.18
10,278.0	91.28	335.07	6,529.6	3,780.8	-643.3	3,679.1	3.88
10,371.0	90.22	334.80	6,528.4	3,865.1	-682.7	3,772.1	1.18
10,463.0	90.13	337.35	6,528.1	3,949.2	-720.9	3,864.0	2.77
10,556.0	90.57	336.47	6,527.5	4,034.7	-756.5	3,956.9	1.06
10,648.0	91.01	336.91	6,526.3	4,119.2	-792.9	4,048.8	0.68
10,741.0	89.87	335.07	6,525.5	4,204.1	-830.8	4,141.7	2.33
10,833.0	90.13	334.28	6,525.5	4,287.3	-870.1	4,233.7	0.90

RECEIVED  
Office of Oil and Gas  
JUL 19 2015  
WV Department of Environmental Protection



<b>Company:</b>	Antero Resources	<b>Local Co-ordinate Reference:</b>	Well Leggett Unit 1H
<b>Project:</b>	Doddridge County WV	<b>TVD Reference:</b>	P522 Leggett 1H 990 GL + 18 KB @ 1008.0usft
<b>Site:</b>	Leggett/ Pike Pad	<b>MD Reference:</b>	P522 Leggett 1H 990 GL + 18 KB @ 1008.0usft
<b>Well:</b>	Leggett Unit 1H	<b>North Reference:</b>	Grid
<b>Wellbore:</b>	Original Wellpath	<b>Survey Calculation Method:</b>	Minimum Curvature
<b>Design:</b>	As Drilled	<b>Database:</b>	Oklahoma District

MD (usft)	Inc (°)	Azi (azimuth) (°)	TVD (usft)	N/S (usft)	E/W (usft)	V. Sec (usft)	DLeg (°/100usft)
10,926.0	90.48	334.54	6,525.1	4,371.2	-910.3	4,326.7	0.47
11,018.0	90.57	334.54	6,524.2	4,454.2	-949.8	4,418.7	0.10
11,111.0	90.48	334.45	6,523.4	4,538.2	-989.9	4,511.7	0.14
11,204.0	90.13	334.45	6,522.9	4,622.1	-1,030.0	4,604.7	0.38
11,296.0	90.22	334.45	6,522.6	4,705.1	-1,069.7	4,696.6	0.10
11,389.0	90.57	334.28	6,521.9	4,788.9	-1,109.9	4,789.6	0.42
11,482.0	89.25	333.13	6,522.1	4,872.3	-1,151.1	4,882.6	1.88
11,574.0	89.34	332.87	6,523.2	4,954.3	-1,192.9	4,974.6	0.30
11,667.0	89.69	332.96	6,524.0	5,037.1	-1,235.2	5,067.6	0.39
11,759.0	90.40	333.57	6,523.9	5,119.2	-1,276.6	5,159.6	1.02
11,852.0	90.57	332.43	6,523.1	5,202.1	-1,318.8	5,252.6	1.24
11,945.0	90.48	334.54	6,522.3	5,285.3	-1,360.3	5,345.6	2.27
12,037.0	91.01	334.19	6,521.1	5,368.2	-1,400.1	5,437.6	0.69
12,130.0	89.52	333.75	6,520.7	5,451.8	-1,440.9	5,530.5	1.67
12,222.0	89.52	334.10	6,521.4	5,534.4	-1,481.4	5,622.5	0.38
12,315.0	89.77	333.94	6,522.0	5,618.0	-1,522.1	5,715.5	0.32
12,408.0	89.78	334.01	6,522.4	5,701.6	-1,562.9	5,808.5	0.08
12,500.0	90.48	333.40	6,522.2	5,784.1	-1,603.7	5,900.5	1.01
12,593.0	90.92	333.57	6,521.0	5,867.3	-1,645.2	5,993.5	0.51
12,685.0	89.78	333.84	6,520.5	5,949.8	-1,685.9	6,085.5	1.27
12,778.0	90.13	332.87	6,520.5	6,032.9	-1,727.6	6,178.5	1.11
12,870.0	90.66	332.87	6,519.9	6,114.8	-1,769.6	6,270.5	0.58
12,932.0	90.80	332.87	6,519.1	6,169.9	-1,797.9	6,332.5	0.23

Measured Depth (usft)	Vertical Depth (usft)	Local Coordinates		Comment
		+N/-S (usft)	+E/-W (usft)	
6,560.0	6,332.5	492.2	867.9	Middlesex
6,742.0	6,452.9	626.3	883.1	Burkett
6,797.0	6,479.7	674.2	880.9	Tully
6,868.0	6,507.2	738.9	871.6	Marcellus

Checked By: \_\_\_\_\_ Approved By: \_\_\_\_\_ Date: \_\_\_\_\_

RECEIVED  
Office of Oil and Gas

JUL 13 2015

WV Department of  
Environmental Protection