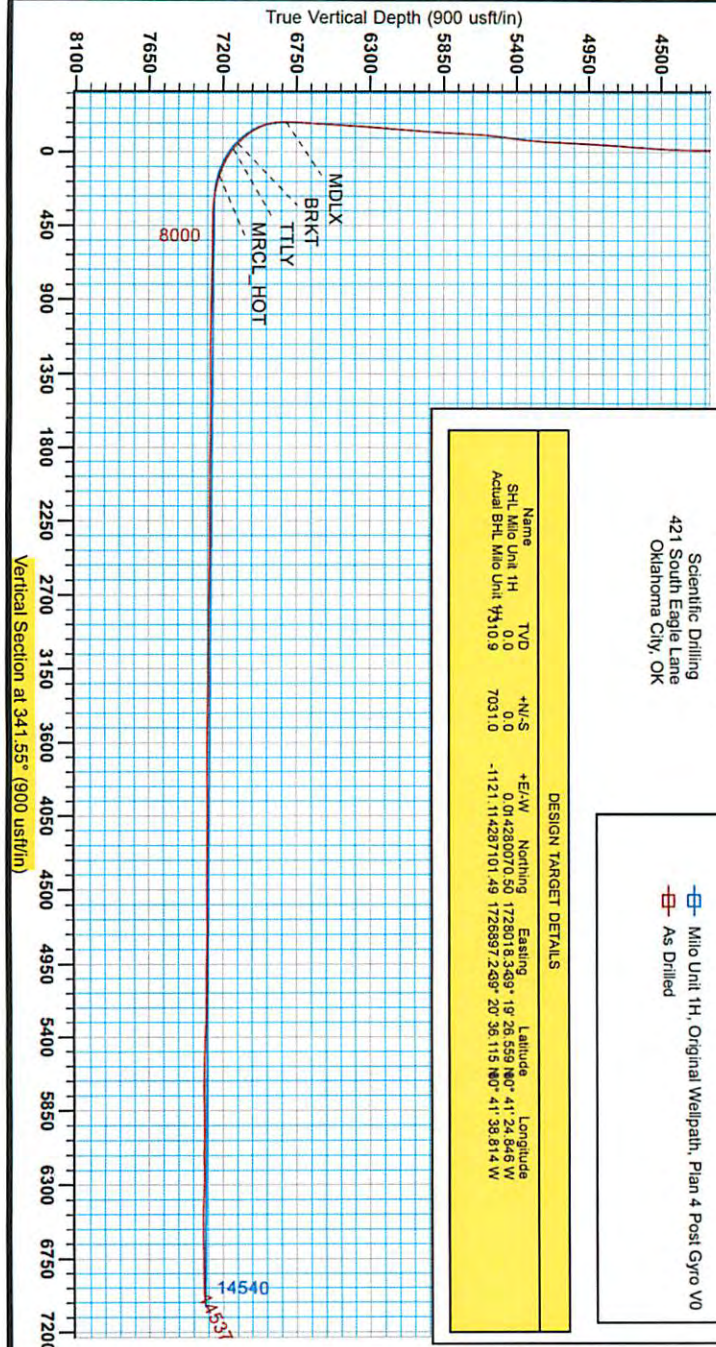




Antero Resources
 Milo Unit 1H
 Doddridge County WV
 Northing: 14280070.50
 Easting: 1728018.34
 As Drilled

17.06270



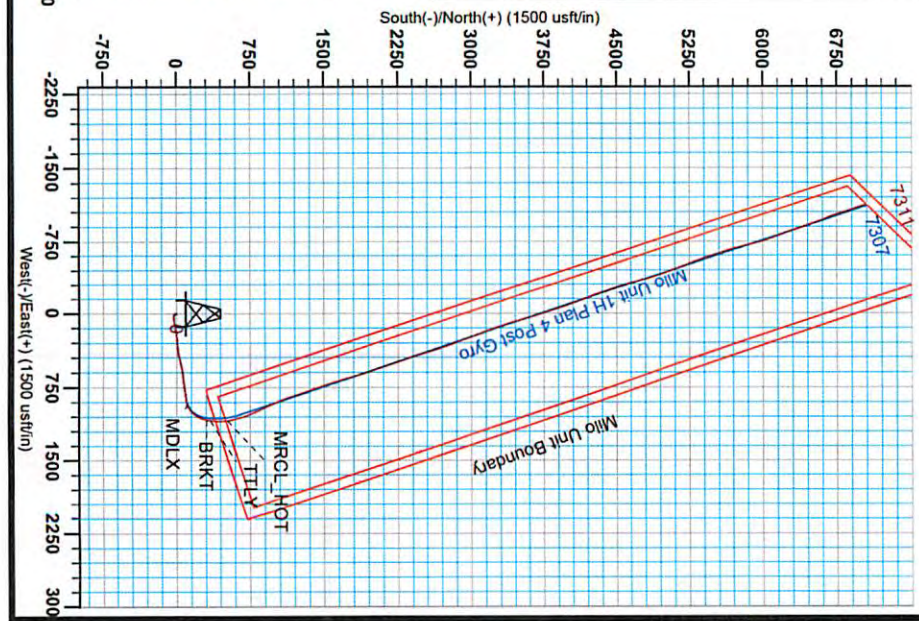
WELL DETAILS: Milo Unit 1H
 Ground Level: 1377.0
 Easting: 1728018.34
 Latitude: 39° 19' 28.559" N
 Longitude: 80° 41' 24.846" W
 Spot: 1377.0

PROJECT DETAILS: Doddridge County WV
 Geodetic System: Universal Transverse Mercator (US Survey Feet)
 Datum: NAD 1983 (NADCON CONUS)
 Ellipsoid: GRS 1980
 Zone: Zone 17N (41 W to 78 W)
 System Datum: Mean Sea Level

Scientific Drilling
 Gentle Lightfoot
 14:50, September 24 2014
 Scientific Drilling
 421 South Eagle Lane
 Oklahoma City, OK

DESIGN TARGET DETAILS					
Name	TVD	+N/-S	+E/W	Northing	Easting
SHL Milo Unit 1H	0.0	0.0	0.0	14280070.50	1728018.34
Actual BHL Milo Unit 1H	7031.0	-1121.0	114287101.49	1728597.249	20 36 115 N07 41 38 814 W

Vertical Section at 341.55° (900 usft/in)



Received
 Office of Oil & Gas
 August 17 2015

Admitts to Grid North
 True North: 341.55°
 Magnetic North: 341.55°
 Strength: 52245.1 INT
 Dip Angle: 66.87°
 Date: 8/4/2014
 Model: BCGM2014

08/25/2015

17-06270



Antero Resources

**Doddridge County WV
Koch/Gains/McCue/Mt Salem Revival/Milo
Milo Unit 1H
Original Wellpath**

Design: As Drilled

EOW Completion Report

24 September, 2014

Received
Office of Oil & Gas
AUG 17 2015

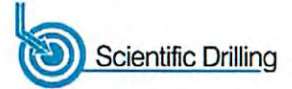


09/25/2015

17-06270



EOW Completion Report



Company:	Antero Resources	Local Co-ordinate Reference:	Well Milo Unit 1H
Project:	Doddridge County WV	TVD Reference:	Patterson 317: 1377' + KB 22.5' @ 1399.5usft
Site:	Koch/Gains/McCue/Mt Salem Revival/Milo	MD Reference:	Patterson 317: 1377' + KB 22.5' @ 1399.5usft
Well:	Milo Unit 1H	North Reference:	Grid
Wellbore:	Original Wellpath	Survey Calculation Method:	Minimum Curvature
Design:	As Drilled	Database:	Oklahoma District

Project	Doddridge County WV, McClellan District		
Map System:	Universal Transverse Mercator (US Survey Feet)	System Datum:	Mean Sea Level
Geo Datum:	NAD 1927 (NADCON CONUS)		
Map Zone:	Zone 17N (84 W to 78 W)		

Site	Koch/Gains/McCue/Mt Salem Revival/Milo				
Site Position:	Northing:	14,280,147.06 usft	Latitude:	39° 19' 27.317 N	
From:	Easting:	1,727,993.07 usft	Longitude:	80° 41' 25.164 W	
Position Uncertainty:	2.0 usft	Slot Radius:	13-3/16"	Grid Convergence:	0.20 °

Well	Milo Unit 1H, Marcellus					
Well Position	+N/-S	0.0 usft	Northing:	14,280,070.50 usft	Latitude:	39° 19' 26.559 N
	+E/-W	0.0 usft	Easting:	1,728,018.34 usft	Longitude:	80° 41' 24.846 W
Position Uncertainty	2.0 usft	Wellhead Elevation:	1,399.5 usft	Ground Level:	1,377.0 usft	

Wellbore	Original Wellpath				
Magnetics	Model Name	Sample Date	Declination (°)	Dip Angle (°)	Field Strength (nT)
	BGGM2014	8/4/2014	-8.55	66.87	52,245

Design	As Drilled				
Audit Notes:					
Version:	1.0	Phase:	ACTUAL	Tie On Depth:	0.0
Vertical Section:	Depth From (TVD) (usft)	+N/-S (usft)	+E/-W (usft)	Direction (°)	
	0.0	0.0	0.0	341.55	

Survey Program	Date 9/24/2014				
From (usft)	To (usft)	Survey (Wellbore)	Tool Name	Description	
109.5	6,485.0	Survey #7 Final Gyro (Original Wellpath)	SDI Standard Keeper	Scientific Drilling Intl. Standard Wireline Keeper	
6,540.0	14,537.0	Survey #8 MWD (Original Wellpath)	MWD SDI	MWD - Standard ver 1.0.1	

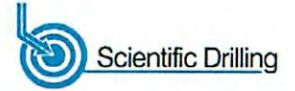
MD (usft)	Inc (°)	Azi (azimuth) (°)	TVD (usft)	N/S (usft)	E/W (usft)	V. Sec (usft)	DLeg (°/100usft)
0.0	0.00	0.00	0.0	0.0	0.0	0.0	0.00
109.5	0.29	69.35	109.5	0.1	0.3	0.0	0.26
134.5	0.28	70.60	134.5	0.1	0.4	0.0	0.05
159.5	0.21	61.57	159.5	0.2	0.5	0.0	0.32
184.5	0.22	75.81	184.5	0.2	0.6	0.0	0.22
209.5	0.25	71.54	209.5	0.2	0.7	0.0	0.14
234.5	0.24	57.95	234.5	0.3	0.8	0.0	0.24
259.5	0.17	72.78	259.5	0.3	0.8	0.0	0.35
284.5	0.20	62.49	284.5	0.4	0.9	0.1	0.18
309.5	0.23	69.35	309.5	0.4	1.0	0.1	0.16
334.5	0.30	73.49	334.5	0.4	1.1	0.1	0.29

Received
Office of Oil & Gas
AUG 17 2015

17-06270



EOW Completion Report



Company: Antero Resources	Local Co-ordinate Reference: Well Milo Unit 1H
Project: Doddridge County WV	TVD Reference: Patterson 317: 1377' + KB 22.5' @ 1399.5usft
Site: Koch/Gains/McCue/Mt Salem Revival/Milo	MD Reference: Patterson 317: 1377' + KB 22.5' @ 1399.5usft
Well: Milo Unit 1H	North Reference: Grid
Wellbore: Original Wellpath	Survey Calculation Method: Minimum Curvature
Design: As Drilled	Database: Oklahoma District

Survey									
MD (usft)	Inc (°)	Azi (azimuth) (°)	TVD (usft)	N/S (usft)	E/W (usft)	V. Sec (usft)	DLeg (°/100usft)		
359.5	0.31	72.85	359.5	0.5	1.2	0.1	0.04		
384.5	0.32	84.75	384.5	0.5	1.4	0.0	0.26		
409.5	0.31	85.65	409.5	0.5	1.5	0.0	0.04		
434.5	0.26	78.71	434.5	0.5	1.6	0.0	0.24		
459.5	0.26	72.34	459.5	0.6	1.7	0.0	0.12		
484.5	0.28	67.20	484.5	0.6	1.8	0.0	0.13		
509.5	0.22	80.63	509.5	0.6	1.9	0.0	0.33		
534.5	0.33	65.41	534.5	0.7	2.1	0.0	0.52		
559.5	0.22	71.88	559.5	0.7	2.2	0.0	0.46		
584.5	0.25	78.79	584.5	0.7	2.3	0.0	0.16		
609.5	0.30	66.01	609.5	0.8	2.4	0.0	0.32		
634.5	0.29	84.98	634.5	0.8	2.5	0.0	0.39		
659.5	0.28	78.88	659.5	0.8	2.6	-0.1	0.13		
684.5	0.24	86.42	684.5	0.8	2.7	-0.1	0.21		
709.5	0.20	97.35	709.5	0.8	2.8	-0.1	0.23		
734.5	0.22	99.30	734.5	0.8	2.9	-0.1	0.08		
759.5	0.22	88.59	759.5	0.8	3.0	-0.2	0.16		
784.5	0.23	90.94	784.5	0.8	3.1	-0.2	0.05		
809.5	0.22	99.31	809.5	0.8	3.2	-0.3	0.14		
834.5	0.24	103.06	834.5	0.8	3.3	-0.3	0.10		
859.5	0.30	97.64	859.5	0.8	3.4	-0.4	0.26		
884.5	0.28	103.34	884.5	0.7	3.6	-0.4	0.14		
909.5	0.29	98.96	909.5	0.7	3.7	-0.5	0.10		
934.5	0.24	107.59	934.5	0.7	3.8	-0.5	0.26		
959.5	0.26	110.72	959.5	0.7	3.9	-0.6	0.10		
984.5	0.27	115.51	984.5	0.6	4.0	-0.7	0.10		
1,009.5	0.23	112.54	1,009.5	0.6	4.1	-0.8	0.17		
1,034.5	0.24	119.55	1,034.5	0.5	4.2	-0.8	0.12		
1,059.5	0.25	126.11	1,059.5	0.5	4.3	-0.9	0.12		
1,084.5	0.28	128.99	1,084.5	0.4	4.4	-1.0	0.13		
1,109.5	0.23	123.92	1,109.5	0.3	4.5	-1.1	0.22		
1,134.5	0.26	136.46	1,134.5	0.3	4.5	-1.2	0.25		
1,159.5	0.27	149.79	1,159.5	0.2	4.6	-1.3	0.25		
1,184.5	0.28	132.26	1,184.5	0.1	4.7	-1.4	0.34		
1,209.5	0.27	138.07	1,209.5	0.0	4.8	-1.5	0.12		
1,234.5	0.24	142.99	1,234.5	-0.1	4.8	-1.6	0.15		
1,259.5	0.24	123.42	1,259.5	-0.2	4.9	-1.7	0.33		
1,284.5	0.21	149.33	1,284.5	-0.2	5.0	-1.8	0.42		
1,309.5	0.20	138.72	1,309.5	-0.3	5.0	-1.9	0.16		
1,334.5	0.26	147.92	1,334.5	-0.4	5.1	-2.0	0.28		
1,359.5	0.27	150.01	1,359.5	-0.5	5.2	-2.1	0.06		
1,384.5	0.24	150.35	1,384.5	-0.6	5.2	-2.2	0.12		
1,409.5	0.29	143.76	1,409.5	-0.7	5.3	-2.3	0.23		
1,434.5	0.31	152.01	1,434.5	-0.8	5.3	-2.4	0.19		

Received
Office of Oil & Gas
AUG 17 2014

17-06270



EOW Completion Report



Company: Antero Resources	Local Co-ordinate Reference: Well Milo Unit 1H
Project: Doddridge County WV	TVD Reference: Patterson 317: 1377' + KB 22.5' @ 1399.5usft
Site: Koch/Gains/McCue/Mt Salem Revival/Milo	MD Reference: Patterson 317: 1377' + KB 22.5' @ 1399.5usft
Well: Milo Unit 1H	North Reference: Grid
Wellbore: Original Wellpath	Survey Calculation Method: Minimum Curvature
Design: As Drilled	Database: Oklahoma District

Survey									
MD (usft)	Inc (°)	Azi (azimuth) (°)	TVD (usft)	N/S (usft)	E/W (usft)	V. Sec (usft)	DLeg (°/100usft)		
1,459.5	0.31	148.35	1,459.5	-0.9	5.4	-2.6	0.08		
1,484.5	0.39	165.00	1,484.5	-1.0	5.5	-2.7	0.51		
1,509.5	0.26	161.55	1,509.5	-1.2	5.5	-2.9	0.53		
1,534.5	0.23	171.74	1,534.5	-1.3	5.5	-3.0	0.21		
1,559.5	0.29	169.72	1,559.5	-1.4	5.6	-3.1	0.24		
1,584.5	0.28	173.72	1,584.5	-1.5	5.6	-3.2	0.09		
1,609.5	0.25	176.08	1,609.5	-1.6	5.6	-3.3	0.13		
1,634.5	0.30	177.95	1,634.5	-1.8	5.6	-3.4	0.20		
1,659.5	0.22	170.42	1,659.5	-1.9	5.6	-3.5	0.35		
1,684.5	0.25	177.73	1,684.5	-2.0	5.6	-3.6	0.17		
1,709.5	0.25	172.64	1,709.5	-2.1	5.6	-3.8	0.09		
1,734.5	0.32	178.81	1,734.5	-2.2	5.6	-3.9	0.31		
1,759.5	0.22	173.02	1,759.5	-2.3	5.6	-4.0	0.41		
1,784.5	0.20	181.36	1,784.5	-2.4	5.6	-4.1	0.15		
1,809.5	0.34	173.53	1,809.5	-2.5	5.6	-4.2	0.58		
1,834.5	0.25	176.85	1,834.5	-2.7	5.7	-4.3	0.37		
1,859.5	0.30	179.34	1,859.5	-2.8	5.7	-4.4	0.21		
1,884.5	0.34	183.63	1,884.5	-2.9	5.7	-4.6	0.19		
1,909.5	0.34	181.64	1,909.5	-3.1	5.7	-4.7	0.05		
1,934.5	0.30	176.21	1,934.5	-3.2	5.7	-4.8	0.20		
1,959.5	0.32	170.07	1,959.5	-3.3	5.7	-5.0	0.15		
1,984.5	0.26	170.56	1,984.5	-3.5	5.7	-5.1	0.24		
2,009.5	0.29	167.67	2,009.5	-3.6	5.7	-5.2	0.13		
2,034.5	0.18	156.62	2,034.5	-3.7	5.7	-5.3	0.47		
2,059.5	0.33	150.73	2,059.5	-3.8	5.8	-5.4	0.61		
2,084.5	0.35	151.10	2,084.5	-3.9	5.9	-5.6	0.08		
2,109.5	0.38	146.30	2,109.5	-4.0	5.9	-5.7	0.17		
2,134.5	0.30	152.42	2,134.5	-4.2	6.0	-5.9	0.35		
2,159.5	0.30	141.22	2,159.5	-4.3	6.1	-6.0	0.23		
2,184.5	0.25	130.51	2,184.5	-4.4	6.2	-6.1	0.29		
2,209.5	0.28	128.08	2,209.5	-4.4	6.3	-6.2	0.13		
2,234.5	0.26	137.73	2,234.5	-4.5	6.4	-6.3	0.20		
2,259.5	0.26	131.92	2,259.5	-4.6	6.4	-6.4	0.11		
2,284.5	0.36	127.26	2,284.5	-4.7	6.5	-6.5	0.41		
2,309.5	0.35	137.61	2,309.5	-4.8	6.7	-6.6	0.26		
2,334.5	0.29	137.37	2,334.5	-4.9	6.7	-6.8	0.24		
2,359.5	0.22	130.98	2,359.5	-5.0	6.8	-6.9	0.30		
2,384.5	0.31	140.01	2,384.5	-5.1	6.9	-7.0	0.40		
2,409.5	0.40	135.89	2,409.5	-5.2	7.0	-7.1	0.37		
2,434.5	0.38	145.78	2,434.5	-5.3	7.1	-7.2	0.28		
2,459.5	0.55	140.18	2,459.5	-5.5	7.2	-7.3	0.70		
2,484.5	0.57	146.96	2,484.5	-5.7	7.4	-7.4	0.28		
2,509.5	0.58	152.40	2,509.5	-5.9	7.5	-7.5	0.22		
2,534.5	0.57	152.65	2,534.5	-6.1	7.6	-7.6	0.04		
2,559.5	0.58	159.86	2,559.5	-6.3	7.7	-7.7	0.29		

Received
Office of Oil & Gas
AUG 17 2015



17.06270

EOW Completion Report



Company:	Antero Resources	Local Co-ordinate Reference:	Well Milo Unit 1H
Project:	Doddridge County WV	TVD Reference:	Patterson 317: 1377' + KB 22.5' @ 1399.5usft
Site:	Koch/Gains/McCue/Mt Salem Revival/Milo	MD Reference:	Patterson 317: 1377' + KB 22.5' @ 1399.5usft
Well:	Milo Unit 1H	North Reference:	Grid
Wellbore:	Original Wellpath	Survey Calculation Method:	Minimum Curvature
Design:	As Drilled	Database:	Oklahoma District

Survey									
MD (usft)	Inc (°)	Azi (azimuth) (°)	TVD (usft)	N/S (usft)	E/W (usft)	V. Sec (usft)	DLeg (°/100usft)		
2,584.5	0.65	154.46	2,584.5	-6.6	7.8	-8.7	0.36		
2,609.5	0.57	160.82	2,609.5	-6.8	7.9	-9.0	0.42		
2,634.5	0.65	167.20	2,634.5	-7.1	8.0	-9.2	0.42		
2,659.5	0.59	171.32	2,659.5	-7.3	8.1	-9.5	0.30		
2,684.5	0.52	180.30	2,684.5	-7.6	8.1	-9.7	0.45		
2,709.5	0.49	191.67	2,709.5	-7.8	8.1	-9.9	0.42		
2,734.5	0.49	196.45	2,734.5	-8.0	8.0	-10.1	0.16		
2,759.5	0.41	204.44	2,759.5	-8.2	7.9	-10.3	0.41		
2,784.5	0.46	203.93	2,784.5	-8.4	7.9	-10.4	0.20		
2,809.5	0.42	202.97	2,809.5	-8.5	7.8	-10.6	0.16		
2,834.5	0.48	212.96	2,834.5	-8.7	7.7	-10.7	0.39		
2,859.5	0.40	210.78	2,859.5	-8.9	7.6	-10.8	0.33		
2,884.5	0.44	218.02	2,884.5	-9.0	7.5	-10.9	0.27		
2,909.5	0.31	219.57	2,909.5	-9.1	7.4	-11.0	0.52		
2,934.5	0.40	223.22	2,934.5	-9.3	7.3	-11.1	0.37		
2,959.5	0.37	217.77	2,959.5	-9.4	7.2	-11.2	0.19		
2,984.5	0.43	221.80	2,984.5	-9.5	7.1	-11.3	0.26		
3,009.5	0.41	220.06	3,009.5	-9.7	6.9	-11.4	0.09		
3,034.5	0.44	225.63	3,034.5	-9.8	6.8	-11.5	0.20		
3,059.5	0.42	228.68	3,059.4	-9.9	6.7	-11.5	0.12		
3,084.5	0.37	235.24	3,084.4	-10.0	6.5	-11.6	0.27		
3,109.5	0.39	217.39	3,109.4	-10.1	6.4	-11.7	0.48		
3,134.5	0.39	225.74	3,134.4	-10.3	6.3	-11.7	0.23		
3,159.5	0.42	232.95	3,159.4	-10.4	6.2	-11.8	0.24		
3,184.5	0.43	223.79	3,184.4	-10.5	6.0	-11.9	0.27		
3,209.5	0.40	229.19	3,209.4	-10.6	5.9	-12.0	0.20		
3,234.5	0.47	227.00	3,234.4	-10.8	5.8	-12.0	0.29		
3,259.5	0.50	229.14	3,259.4	-10.9	5.6	-12.1	0.14		
3,284.5	0.43	227.65	3,284.4	-11.0	5.5	-12.2	0.28		
3,309.5	0.50	233.22	3,309.4	-11.2	5.3	-12.3	0.33		
3,334.5	0.43	231.66	3,334.4	-11.3	5.1	-12.3	0.28		
3,359.5	0.44	224.43	3,359.4	-11.4	5.0	-12.4	0.22		
3,384.5	0.42	226.14	3,384.4	-11.6	4.9	-12.5	0.10		
3,409.5	0.41	231.11	3,409.4	-11.7	4.7	-12.6	0.15		
3,434.5	0.42	228.94	3,434.4	-11.8	4.6	-12.6	0.07		
3,459.5	0.42	211.73	3,459.4	-11.9	4.5	-12.7	0.50		
3,484.5	0.46	219.62	3,484.4	-12.1	4.4	-12.8	0.29		
3,509.5	0.43	231.20	3,509.4	-12.2	4.2	-12.9	0.38		
3,534.5	0.38	223.93	3,534.4	-12.3	4.1	-13.0	0.29		
3,559.5	0.43	225.65	3,559.4	-12.5	4.0	-13.1	0.21		
3,584.5	0.43	215.69	3,584.4	-12.6	3.8	-13.2	0.30		
3,609.5	0.48	231.23	3,609.4	-12.7	3.7	-13.3	0.53		
3,634.5	0.43	230.92	3,634.4	-12.9	3.6	-13.3	0.20		
3,659.5	0.29	243.82	3,659.4	-13.0	3.4	-13.4	0.64		

Received
Office of Oil & Gas
AUG 17 2015

17-06270



EOW Completion Report



Company:	Antero Resources	Local Co-ordinate Reference:	Well Milo Unit 1H
Project:	Doddridge County WV	TVD Reference:	Patterson 317: 1377' + KB 22.5' @ 1399.5usft
Site:	Koch/Gains/McCue/Mt Salem Revival/Milo	MD Reference:	Patterson 317: 1377' + KB 22.5' @ 1399.5usft
Well:	Milo Unit 1H	North Reference:	Grid
Wellbore:	Original Wellpath	Survey Calculation Method:	Minimum Curvature
Design:	As Drilled	Database:	Oklahoma District

Survey									
MD (usft)	Inc (°)	Azi (azimuth) (°)	TVD (usft)	N/S (usft)	E/W (usft)	V. Sec (usft)	DLeg (°/100usft)		
3,684.5	0.49	231.06	3,684.4	-13.1	3.3	-13.4	0.87		
3,709.5	0.40	232.40	3,709.4	-13.2	3.1	-13.5	0.36		
3,734.5	0.32	239.31	3,734.4	-13.3	3.0	-13.5	0.36		
3,759.5	0.50	238.18	3,759.4	-13.4	2.8	-13.6	0.72		
3,784.5	0.46	241.42	3,784.4	-13.5	2.7	-13.6	0.19		
3,809.5	0.44	244.34	3,809.4	-13.5	2.5	-13.6	0.12		
3,834.5	0.48	249.66	3,834.4	-13.6	2.3	-13.7	0.23		
3,859.5	0.37	238.65	3,859.4	-13.7	2.1	-13.7	0.55		
3,884.5	0.44	241.58	3,884.4	-13.8	2.0	-13.7	0.29		
3,909.5	0.42	255.84	3,909.4	-13.9	1.8	-13.7	0.43		
3,934.5	0.49	245.29	3,934.4	-13.9	1.6	-13.7	0.44		
3,959.5	0.48	230.61	3,959.4	-14.0	1.5	-13.8	0.50		
3,984.5	0.52	230.51	3,984.4	-14.2	1.3	-13.9	0.16		
4,009.5	0.40	231.01	4,009.4	-14.3	1.1	-13.9	0.48		
4,034.5	0.35	211.58	4,034.4	-14.4	1.0	-14.0	0.54		
4,059.5	0.58	232.22	4,059.4	-14.6	0.9	-14.1	1.12		
4,084.5	0.48	220.68	4,084.4	-14.7	0.7	-14.2	0.58		
4,109.5	0.49	230.55	4,109.4	-14.9	0.6	-14.3	0.34		
4,134.5	0.53	229.33	4,134.4	-15.0	0.4	-14.4	0.17		
4,159.5	0.63	234.49	4,159.4	-15.2	0.2	-14.5	0.45		
4,184.5	0.64	232.90	4,184.4	-15.3	0.0	-14.5	0.08		
4,209.5	0.67	241.44	4,209.4	-15.5	-0.3	-14.6	0.41		
4,234.5	0.73	234.32	4,234.4	-15.7	-0.5	-14.7	0.42		
4,259.5	0.70	234.94	4,259.4	-15.8	-0.8	-14.8	0.12		
4,284.5	0.65	238.22	4,284.4	-16.0	-1.0	-14.8	0.25		
4,309.5	0.67	238.05	4,309.4	-16.1	-1.3	-14.9	0.08		
4,334.5	0.61	229.73	4,334.4	-16.3	-1.5	-15.0	0.44		
4,359.5	0.88	163.45	4,359.4	-16.6	-1.5	-15.2	3.38		
4,384.5	1.67	140.87	4,384.4	-17.0	-1.3	-15.8	3.69		
4,409.5	2.50	131.63	4,409.4	-17.7	-0.6	-16.6	3.57		
4,434.5	3.25	126.18	4,434.3	-18.5	0.4	-17.6	3.19		
4,459.5	4.19	121.74	4,459.3	-19.4	1.7	-18.9	3.93		
4,484.5	4.70	119.86	4,484.2	-20.4	3.4	-20.4	2.12		
4,509.5	5.06	118.24	4,509.1	-21.4	5.2	-21.9	1.54		
4,534.5	5.58	115.27	4,534.0	-22.4	7.3	-23.6	2.35		
4,559.5	6.22	111.42	4,558.9	-23.4	9.7	-25.3	3.01		
4,584.5	7.18	106.68	4,583.7	-24.4	12.4	-28.9	4.43		
4,609.5	8.03	104.55	4,608.5	-25.3	15.6	-30.8	4.58		
4,634.5	9.00	100.83	4,633.2	-26.1	19.2	-32.7	4.46		
4,659.5	9.99	96.22	4,657.9	-26.7	23.3	-34.4	4.99		
4,684.5	11.37	91.42	4,682.4	-27.0	27.9	-36.0	6.56		
4,709.5	12.27	88.50	4,706.9	-27.0	33.0	-37.6	4.32		
4,734.5	13.07	86.68	4,731.3	-26.7	38.5	-39.1	3.58		
4,759.5	13.65	87.01	4,755.6	-26.4	44.3		2.34		

Received
Office of Oil & Gas
AUG 17 2015

17-06270



EOW Completion Report



Company:	Antero Resources	Local Co-ordinate Reference:	Well Milo Unit 1H
Project:	Doddridge County WV	TVD Reference:	Patterson 317: 1377' + KB 22.5' @ 1399.5usft
Site:	Koch/Gains/McCue/Mt Salem Revival/Milo	MD Reference:	Patterson 317: 1377' + KB 22.5' @ 1399.5usft
Well:	Milo Unit 1H	North Reference:	Grid
Wellbore:	Original Wellpath	Survey Calculation Method:	Minimum Curvature
Design:	As Drilled	Database:	Oklahoma District

Survey

MD (usft)	Inc (°)	Azi (azimuth) (°)	TVD (usft)	N/S (usft)	E/W (usft)	V. Sec (usft)	DLeg (°/100usft)
4,784.5	13.87	87.24	4,779.9	-26.1	50.2	-40.7	0.91
4,809.5	14.25	86.48	4,804.2	-25.8	56.3	-42.3	1.69
4,834.5	14.95	84.11	4,828.4	-25.3	62.6	-43.8	3.68
4,859.5	15.75	82.37	4,852.5	-24.5	69.1	-45.1	3.69
4,884.5	16.39	82.57	4,876.5	-23.6	76.0	-46.4	2.57
4,909.5	17.05	83.53	4,900.4	-22.7	83.1	-47.9	2.86
4,934.5	17.52	83.82	4,924.3	-21.9	90.5	-49.4	1.91
4,959.5	17.79	83.49	4,948.1	-21.1	98.0	-51.0	1.15
4,984.5	18.34	81.03	4,971.9	-20.0	105.7	-52.4	3.76
5,009.5	18.83	80.38	4,995.6	-18.7	113.6	-53.7	2.13
5,034.5	18.87	79.86	5,019.2	-17.3	121.5	-54.9	0.69
5,059.5	19.45	79.51	5,042.9	-15.9	129.6	-56.1	2.37
5,084.5	20.00	79.34	5,066.4	-14.3	137.9	-57.2	2.21
5,109.5	20.25	79.01	5,089.9	-12.7	146.4	-58.4	1.10
5,134.5	20.65	79.10	5,113.3	-11.0	154.9	-59.5	1.60
5,159.5	21.32	79.05	5,136.6	-9.3	163.7	-60.7	2.68
5,184.5	22.13	79.34	5,159.9	-7.6	172.8	-61.9	3.27
5,209.5	22.79	79.51	5,183.0	-5.9	182.2	-63.2	2.65
5,234.5	23.34	79.83	5,206.0	-4.1	191.8	-64.6	2.26
5,259.5	24.00	80.25	5,228.9	-2.4	201.7	-66.1	2.72
5,284.5	24.75	80.33	5,251.6	-0.6	211.9	-67.7	3.00
5,309.5	25.24	80.61	5,274.3	1.1	222.3	-69.3	2.02
5,334.5	25.98	81.13	5,296.8	2.8	233.0	-71.0	3.09
5,359.5	26.40	81.86	5,319.3	4.5	243.9	-73.0	2.12
5,384.5	25.92	84.68	5,341.7	5.8	254.8	-75.2	5.33
5,409.5	26.14	86.54	5,364.2	6.6	265.8	-77.9	3.38
5,434.5	26.32	87.94	5,386.6	7.1	276.8	-80.8	2.58
5,459.5	26.63	87.95	5,409.0	7.5	288.0	-84.0	1.24
5,484.5	26.48	87.77	5,431.3	7.9	299.1	-87.1	0.68
5,509.5	26.78	87.46	5,453.7	8.4	310.3	-90.2	1.32
5,534.5	27.22	86.73	5,476.0	9.0	321.7	-93.3	2.20
5,559.5	27.66	85.36	5,498.2	9.8	333.1	-96.2	3.08
5,584.5	27.78	84.54	5,520.3	10.8	344.7	-98.8	1.60
5,609.5	28.08	83.96	5,542.4	12.0	356.4	-101.4	1.62
5,634.5	28.06	82.22	5,564.4	13.4	368.1	-103.8	3.28
5,659.5	28.00	80.73	5,586.5	15.1	379.7	-105.8	2.81
5,684.5	28.04	79.77	5,608.6	17.1	391.2	-107.6	1.81
5,709.5	28.29	79.15	5,630.6	19.3	402.8	-109.2	1.54
5,734.5	28.59	78.41	5,652.6	21.6	414.5	-110.7	1.85
5,759.5	28.89	77.64	5,674.5	24.1	426.3	-112.1	1.91
5,784.5	29.20	77.68	5,696.4	26.7	438.1	-113.3	1.24
5,809.5	29.27	77.67	5,718.2	29.3	450.1	-114.6	0.28
5,834.5	29.34	77.61	5,740.0	31.9	462.0	-115.9	0.30
5,859.5	29.69	77.57	5,761.7	34.6	474.1	-117.2	1.40

Received
Office of Oil & Gas
AUG-17 2015

17-06270



EOW Completion Report



Company:	Antero Resources	Local Co-ordinate Reference:	Well Milo Unit 1H
Project:	Doddridge County WV	TVD Reference:	Patterson 317: 1377' + KB 22.5' @ 1399.5usft
Site:	Koch/Gains/McCue/Mt Salem Revival/Milo	MD Reference:	Patterson 317: 1377' + KB 22.5' @ 1399.5usft
Well:	Milo Unit 1H	North Reference:	Grid
Wellbore:	Original Wellpath	Survey Calculation Method:	Minimum Curvature
Design:	As Drilled	Database:	Oklahoma District

Survey

MD (usft)	Inc (°)	Azi (azimuth) (°)	TVD (usft)	N/S (usft)	E/W (usft)	V. Sec (usft)	DLeg (°/100usft)
5,884.5	29.91	77.21	5,783.4	37.3	486.2	-118.5	1.13
5,909.5	29.93	77.16	5,805.1	40.0	498.3	-119.7	0.13
5,934.5	29.66	76.84	5,826.8	42.8	510.4	-120.9	1.25
5,959.5	29.89	76.84	5,848.5	45.7	522.5	-122.1	0.92
5,984.5	28.20	77.19	5,870.4	48.4	534.4	-123.2	6.79
6,009.5	26.29	77.59	5,892.6	50.9	545.5	-124.4	7.67
6,034.5	25.78	77.62	5,915.0	53.2	556.2	-125.5	2.04
6,059.5	25.38	77.71	5,937.6	55.6	566.8	-126.7	1.61
6,084.5	24.75	79.65	5,960.2	57.6	577.2	-128.0	4.14
6,109.5	24.45	80.76	5,983.0	59.4	587.4	-129.6	2.20
6,134.5	24.31	81.44	6,005.7	61.0	597.6	-131.3	1.25
6,159.5	24.16	81.55	6,028.5	62.5	607.8	-133.0	0.63
6,184.5	24.03	81.85	6,051.4	64.0	617.9	-134.8	0.71
6,209.5	24.38	82.85	6,074.2	65.4	628.0	-136.8	2.16
6,234.5	24.17	83.82	6,096.9	66.5	638.2	-138.9	1.80
6,259.5	23.92	84.05	6,119.8	67.6	648.4	-141.0	1.07
6,284.5	23.40	83.75	6,142.7	68.7	658.3	-143.2	2.14
6,309.5	23.03	83.46	6,165.7	69.8	668.1	-145.2	1.55
6,334.5	22.69	83.24	6,188.7	70.9	677.8	-147.2	1.40
6,359.5	23.07	82.38	6,211.7	72.1	687.4	-149.1	2.02
6,384.5	23.34	82.08	6,234.7	73.5	697.2	-151.0	1.18
6,409.5	23.46	81.44	6,257.6	74.9	707.0	-152.7	1.12
6,434.5	22.86	81.65	6,280.6	76.3	716.7	-154.4	2.42
6,459.5	21.33	81.80	6,303.8	77.7	726.0	-156.1	6.12
6,484.5	19.70	81.58	6,327.2	78.9	734.7	-157.6	6.53
6,485.0	19.67	81.58	6,327.7	79.0	734.9	-157.7	6.12
6,540.0	18.99	82.57	6,379.6	81.5	752.9	-161.0	1.37
6,634.0	19.26	78.96	6,468.4	86.4	783.3	-165.9	1.29
6,728.0	19.26	83.01	6,557.1	91.3	813.9	-171.0	1.42
6,822.0	19.08	84.15	6,645.9	94.7	844.6	-177.4	0.44
6,849.0	18.73	84.41	6,671.5	95.6	853.3	-179.3	1.33
6,881.0	19.23	83.57	6,701.7	96.7	863.6	-181.6	1.78
6,912.0	21.52	80.34	6,730.8	98.2	874.3	-183.5	8.23
6,943.0	24.36	77.56	6,759.3	100.6	886.1	-185.1	9.80
6,975.0	27.89	75.15	6,788.1	103.9	899.8	-186.2	11.52
7,004.0	31.39	73.00	6,813.3	107.9	913.6	-186.8	12.60
MDLX							
7,006.0	31.63	72.87	6,815.0	108.2	914.6	-186.9	12.60
7,038.0	34.73	69.03	6,841.7	113.9	931.2	-186.6	11.70
7,070.0	36.49	63.41	6,867.8	121.4	948.2	-184.9	11.61
7,101.0	37.90	57.78	6,892.5	130.6	964.5	-181.3	11.88
7,133.0	39.04	52.33	6,917.5	142.0	980.8	-177.7	11.17
7,165.0	41.42	46.97	6,942.0	155.4	996.5	-167.9	13.12
7,196.0	43.70	42.93	6,964.8	170.3	1,011.3	-158.5	11.48

Received
Office of Oil & Gas
AUG 17 2015



17-06270

EOW Completion Report



Company:	Antero Resources	Local Co-ordinate Reference:	Well Milo Unit 1H
Project:	Doddridge County WV	TVD Reference:	Patterson 317: 1377' + KB 22.5' @ 1399.5usft
Site:	Koch/Gains/McCue/Mt Salem Revival/Milo	MD Reference:	Patterson 317: 1377' + KB 22.5' @ 1399.5usft
Well:	Milo Unit 1H	North Reference:	Grid
Wellbore:	Original Wellpath	Survey Calculation Method:	Minimum Curvature
Design:	As Drilled	Database:	Oklahoma District

Survey								
MD (usft)	Inc (°)	Azi (azimuth) (°)	TVD (usft)	N/S (usft)	E/W (usft)	V. Sec (usft)	DLeg (°/100usft)	
7,228.0	44.67	38.36	6,987.8	187.2	1,025.8	-147.1	10.40	
7,259.0	45.81	33.17	7,009.6	205.0	1,038.7	-134.2	12.44	
7,291.0	46.34	27.90	7,031.8	224.9	1,050.4	-119.1	11.97	
7,323.0	47.57	23.86	7,053.6	245.9	1,060.6	-102.4	9.99	
7,354.0	48.98	19.64	7,074.3	267.4	1,069.1	-84.7	11.13	
7,386.0	50.47	15.86	7,095.0	290.6	1,076.5	-65.0	10.14	
7,404.0	51.39	13.71	7,106.3	304.1	1,080.1	-53.3	10.59	
BRKT								
7,418.0	52.14	12.08	7,115.0	314.9	1,082.6	-43.9	10.59	
7,449.0	55.13	8.13	7,133.4	339.4	1,086.9	-22.0	14.08	
7,451.0	55.30	7.95	7,134.5	341.1	1,087.2	-20.5	11.43	
TTLY								
7,481.0	57.94	5.32	7,151.0	365.9	1,090.0	2.2	11.43	
7,513.0	61.38	4.17	7,167.2	393.5	1,092.3	27.5	11.19	
7,545.0	64.69	2.21	7,181.7	421.9	1,093.9	54.0	11.70	
7,576.0	67.80	359.30	7,194.2	450.3	1,094.3	80.8	13.21	
7,608.0	69.38	355.91	7,205.9	480.1	1,093.0	109.5	11.03	
7,640.0	71.04	351.63	7,216.7	510.0	1,089.7	138.9	13.61	
7,646.0	71.67	351.10	7,218.6	515.6	1,088.9	144.5	13.48	
MRCL_HOT								
7,671.0	74.33	348.93	7,225.9	539.1	1,084.7	168.1	13.48	
7,703.0	76.77	347.82	7,233.9	569.5	1,078.5	198.9	8.33	
7,734.0	78.35	346.33	7,240.6	599.0	1,071.7	229.0	6.93	
7,766.0	80.37	345.10	7,246.5	629.5	1,064.0	260.4	7.36	
7,798.0	83.01	342.55	7,251.1	659.9	1,055.1	292.0	11.41	
7,892.0	88.99	338.42	7,257.7	748.2	1,023.8	385.7	7.72	
7,987.0	89.87	335.34	7,258.6	835.5	986.5	480.4	3.37	
8,082.0	89.87	333.02	7,258.8	921.1	945.2	574.6	2.44	
8,177.0	88.02	335.43	7,260.6	1,006.6	903.9	668.8	3.20	
8,268.0	88.56	340.98	7,263.3	1,091.0	870.1	759.6	6.12	
8,358.0	89.16	341.14	7,265.1	1,176.1	840.9	849.5	0.69	
8,449.0	89.08	341.41	7,266.5	1,262.3	811.7	940.5	0.31	
8,540.0	89.08	340.70	7,268.0	1,348.3	782.1	1,031.5	0.78	
8,633.0	88.02	341.32	7,270.3	1,436.2	751.9	1,124.5	1.32	
8,724.0	89.78	340.70	7,272.1	1,522.3	722.3	1,215.4	2.05	
8,816.0	90.04	343.69	7,272.2	1,609.9	694.2	1,307.4	3.26	
8,907.0	90.22	344.57	7,272.0	1,697.4	669.3	1,398.3	0.99	
8,998.0	90.84	343.78	7,271.1	1,784.9	644.5	1,489.2	1.10	
9,090.0	90.04	344.31	7,270.4	1,873.4	619.2	1,581.1	1.04	
9,182.0	88.55	340.70	7,271.6	1,961.1	591.5	1,673.1	4.24	
9,273.0	89.08	341.32	7,273.5	2,047.1	561.9	1,764.1	0.90	
9,368.0	90.22	341.05	7,274.0	2,137.1	531.3	1,859.1	1.23	
9,462.0	89.25	341.45	7,274.5	2,226.1	501.1	1,953.1	1.12	
9,557.0	89.08	342.02	7,275.9	2,316.3	471.3	2,048.1	0.63	
9,652.0	90.04	341.76	7,276.6	2,406.6	441.8	2,143.1	1.05	

Received
Office of Oil & Gas
AUG 17 2015

17-06270



EOW Completion Report



Company:	Antero Resources	Local Co-ordinate Reference:	Well Milo Unit 1H
Project:	Doddridge County WV	TVD Reference:	Patterson 317: 1377' + KB 22.5' @ 1399.5usft
Site:	Koch/Gains/McCue/Mt Salem Revival/Milo	MD Reference:	Patterson 317: 1377' + KB 22.5' @ 1399.5usft
Well:	Milo Unit 1H	North Reference:	Grid
Wellbore:	Original Wellpath	Survey Calculation Method:	Minimum Curvature
Design:	As Drilled	Database:	Oklahoma District

Survey

MD (usft)	Inc (°)	Azi (azimuth) (°)	TVD (usft)	N/S (usft)	E/W (usft)	V. Sec (usft)	DLeg (°/100usft)
9,747.0	89.52	342.64	7,276.9	2,497.0	412.7	2,238.0	1.08
9,842.0	90.81	344.30	7,276.7	2,588.1	385.7	2,333.0	2.21
9,937.0	89.34	341.23	7,276.6	2,678.8	357.6	2,428.0	3.58
10,032.0	89.34	339.82	7,277.6	2,768.4	325.9	2,522.9	1.48
10,126.0	88.64	340.09	7,279.3	2,856.6	293.7	2,616.9	0.80
10,221.0	88.90	340.53	7,281.3	2,946.1	261.7	2,711.8	0.54
10,316.0	89.43	339.74	7,282.7	3,035.4	229.4	2,806.8	1.00
10,411.0	90.22	339.74	7,283.0	3,124.5	196.5	2,901.7	0.83
10,505.0	89.08	338.42	7,283.6	3,212.3	162.9	2,995.7	1.86
10,600.0	88.81	341.14	7,285.3	3,301.5	130.1	3,090.6	2.88
10,695.0	90.40	344.39	7,286.0	3,392.2	102.0	3,185.5	3.81
10,790.0	88.46	344.22	7,286.9	3,483.6	76.3	3,280.4	2.05
10,885.0	89.43	343.25	7,288.7	3,574.8	49.7	3,375.3	1.44
10,979.0	90.31	342.90	7,288.9	3,664.7	22.3	3,469.3	1.01
11,074.0	88.11	342.02	7,290.2	3,755.3	-6.3	3,564.3	2.49
11,170.0	88.81	343.16	7,292.8	3,846.9	-35.0	3,660.2	1.39
11,264.0	90.92	341.58	7,293.0	3,936.4	-63.5	3,754.2	2.80
11,359.0	90.57	340.26	7,291.8	4,026.2	-94.6	3,849.2	1.44
11,453.0	89.90	338.82	7,291.4	4,114.3	-127.4	3,943.1	1.69
11,548.0	90.31	337.98	7,291.2	4,202.6	-162.4	4,038.0	0.98
11,642.0	88.90	339.03	7,291.9	4,290.1	-196.8	4,131.8	1.87
11,737.0	90.24	340.44	7,292.6	4,379.2	-229.7	4,226.8	2.05
11,832.0	88.99	341.32	7,293.2	4,468.9	-260.8	4,321.8	1.61
11,926.0	90.13	343.16	7,293.9	4,558.4	-289.5	4,415.8	2.30
12,021.0	89.69	343.96	7,294.1	4,649.6	-316.4	4,510.7	0.96
12,116.0	90.75	345.89	7,293.7	4,741.3	-341.1	4,605.5	2.32
12,211.0	90.48	342.64	7,292.7	4,832.7	-366.9	4,700.4	3.43
12,306.0	88.64	341.41	7,293.4	4,923.1	-396.2	4,795.4	2.33
12,401.0	89.08	339.12	7,295.3	5,012.5	-428.2	4,890.3	2.45
12,496.0	89.78	338.51	7,296.3	5,101.0	-462.6	4,985.2	0.98
12,591.0	89.87	338.86	7,296.6	5,189.5	-497.1	5,080.1	0.38
12,686.0	88.90	339.65	7,297.6	5,278.4	-530.8	5,175.0	1.32
12,780.0	88.90	340.44	7,299.4	5,366.7	-562.8	5,269.0	0.84
12,875.0	86.91	340.29	7,302.9	5,456.1	-594.7	5,363.9	2.10
12,970.0	87.67	342.99	7,307.3	5,546.2	-624.6	5,458.8	2.95
13,065.0	89.25	341.49	7,309.9	5,636.6	-653.6	5,553.7	2.29
13,160.0	88.72	343.96	7,311.6	5,727.3	-681.8	5,648.7	2.66
13,254.0	90.22	347.29	7,312.5	5,818.3	-705.1	5,742.4	3.89
13,349.0	90.92	345.27	7,311.5	5,910.6	-727.6	5,837.1	2.25
13,444.0	90.92	341.85	7,310.0	6,001.7	-754.5	5,932.0	3.60
13,539.0	88.29	340.26	7,310.6	6,091.5	-785.4	6,027.0	3.23
13,634.0	89.52	340.00	7,312.5	6,180.9	-817.6	6,121.9	1.32
13,729.0	91.28	340.35	7,311.8	6,270.2	-849.9	6,216.9	1.89
13,824.0	87.41	340.44	7,312.9	6,359.7	-881.7	6,311.9	4.07

Received
Office of Oil & Gas

AUG 17 2015

17-06270



EOW Completion Report



Company:	Antero Resources	Local Co-ordinate Reference:	Well Milo Unit 1H
Project:	Doddridge County WV	TVD Reference:	Patterson 317: 1377' + KB 22.5' @ 1399.5usft
Site:	Koch/Gains/McCue/Mt Salem Revival/Milo	MD Reference:	Patterson 317: 1377' + KB 22.5' @ 1399.5usft
Well:	Milo Unit 1H	North Reference:	Grid
Wellbore:	Original Wellpath	Survey Calculation Method:	Minimum Curvature
Design:	As Drilled	Database:	Oklahoma District

MD (usft)	Inc (°)	Azi (azimuth) (°)	TVD (usft)	N/S (usft)	E/W (usft)	V. Sec (usft)	DLeg (°/100usft)
13,919.0	88.55	340.97	7,316.2	6,449.3	-913.1	6,406.8	1.32
14,013.0	89.34	339.82	7,318.0	6,537.8	-944.6	6,500.8	1.48
14,108.0	90.48	337.28	7,318.1	6,626.3	-979.4	6,595.6	2.93
14,203.0	90.48	340.35	7,317.3	6,714.8	-1,013.7	6,690.5	3.23
14,298.0	90.31	342.20	7,316.7	6,804.8	-1,044.2	6,785.5	1.96
14,393.0	91.45	340.97	7,315.2	6,894.9	-1,074.2	6,880.5	1.77
14,474.0	91.81	340.99	7,312.9	6,971.5	-1,100.6	6,961.4	0.45
14,537.0	91.81	340.99	7,310.9	7,031.0	-1,121.1	7,024.4	0.00

Measured Depth (usft)	Vertical Depth (usft)	Local Coordinates		Comment
		+N/-S (usft)	+E/-W (usft)	
7,004.0	6,813.3	107.9	913.6	MDLX
7,404.0	7,106.3	304.1	1,080.1	BRKT
7,451.0	7,134.5	341.1	1,087.2	TTLY
7,646.0	7,218.6	515.6	1,088.9	MRCL_HOT

Checked By: _____ Approved By: _____ Date: _____

Received
Office of Oil & Gas
AUG 17 2015