



Antero Resources  
 Koch Unit 2H  
 Doddridge County WV  
 Northing: 14280137.12  
 Easting: 1727996.24  
 As Drilled

**WELL DETAILS:** Koch Unit 2H

Ground Level:	1377.0	Slot
Easting:	1727996.24	Longitude
Northing:	14280137.12	Latitude
+N/S	0.0	+E/W
0.0	0.0	14280137.12

**PROJECT DETAILS:** Doddridge County WV

Geodetic System: Universal Transverse Mercator (US Survey Feet)  
 Datum: NAD 1983 (NADCON CONUS)  
 Ellipsoid: Clarke 1866  
 Zone: Zone 17N (84 W to 78 W)  
 System Datum: Mean Sea Level

**REFERENCE INFORMATION**

Coordinates (N/E Reference: West Area US 2H Unit North  
 Measurement (V/L) Reference: State of WV, 10/2/07, 4th Edition  
 Calculation Method: Minimum Curvature  
 © 2010 Scientific Drilling



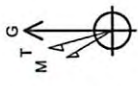
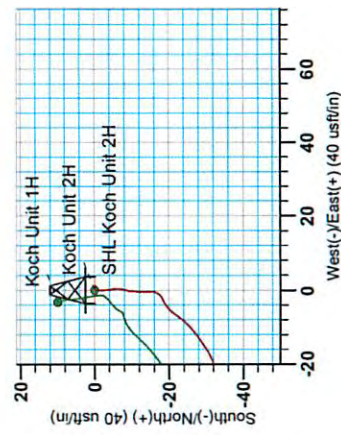
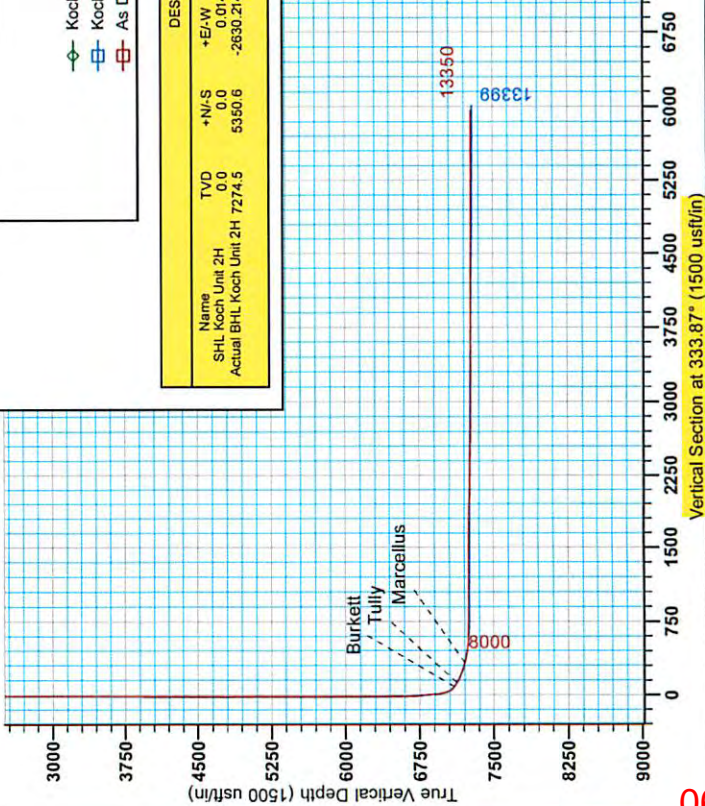
Genie Lightfoot  
 Scientific Drilling  
 421 South Eagle Lane  
 Oklahoma City Oklahoma  
 405-787-3663

**LEGEND**

- Koch Unit 1H, Original Wellpath, As Drilled VO
- Koch Unit 2H, Original Wellpath, Plan 4 VO
- As Drilled

**DESIGN TARGET DETAILS**

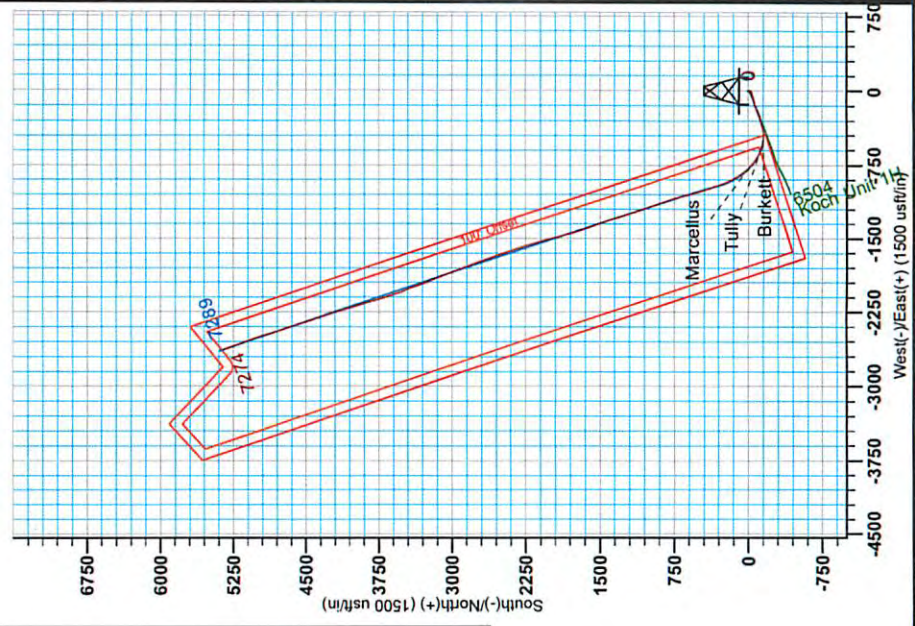
Name	TVD	+N/S	+E/W	Northing	Easting	Latitude	Longitude
SHL Koch Unit 2H	0.0	0.0	0.0	14280137.12	1727996.2399	19 27.210 180° 41' 25.124 W	
Actual BHL Koch Unit 2H	7274.5	5350.6	-2630.2	14285487.68	1728386.0499	20 20.210 180° 41' 56.379 W	



To convert Magnetic North to Grid, Subtract 8.72°  
 To convert True North to Grid, Subtract 0.20°

Azimuths to Grid North  
 True North: -0.20°  
 Magnetic North: -8.72°

Magnetic Field  
 Strength: 52.395 Gauss  
 Dip Angle: 66.89°  
 Date: 10/22/2013  
 Model: IGRF2010



06/05/2015

RECEIVED  
 Office of Oil and Gas  
 MAY 18 2015  
 WV Department of  
 Environmental Protection



# Antero Resources

Doddridge County WV  
Koch/Gains/McCue/Mt Salem Revival  
Koch Unit 2H  
Original Wellpath

Design: As Drilled

## EOW Completion Report

17 March, 2014

RECEIVED  
Office of Oil and Gas  
MAY 18 2015  
WV Department of  
Environmental Protection



06/05/2015



<b>Company:</b>	Antero Resources	<b>Local Co-ordinate Reference:</b>	Well Koch Unit 2H
<b>Project:</b>	Doddridge County WV	<b>TVD Reference:</b>	Koch 2H 1377 GL + 19 KB @ 1396.0usft
<b>Site:</b>	Koch/Gains/McCue/Mt Salem Revival	<b>MD Reference:</b>	Koch 2H 1377 GL + 19 KB @ 1396.0usft
<b>Well:</b>	Koch Unit 2H	<b>North Reference:</b>	Grid
<b>Wellbore:</b>	Original Wellpath	<b>Survey Calculation Method:</b>	Minimum Curvature
<b>Design:</b>	As Drilled	<b>Database:</b>	Oklahoma District

<b>Project</b>	Doddridge County WV, McClellan District		
<b>Map System:</b>	Universal Transverse Mercator (US Survey Fee	<b>System Datum:</b>	Mean Sea Level
<b>Geo Datum:</b>	NAD 1927 (NADCON CONUS)		
<b>Map Zone:</b>	Zone 17N (84 W to 78 W)		

<b>Site</b>	Koch/Gains/McCue/Mt Salem Revival				
<b>Site Position:</b>		<b>Northing:</b>	14,280,147.06 usft	<b>Latitude:</b>	39° 19' 27.317 N
<b>From:</b>	Map	<b>Easting:</b>	1,727,993.07 usft	<b>Longitude:</b>	80° 41' 25.164 W
<b>Position Uncertainty:</b>	2.0 usft	<b>Slot Radius:</b>	13-3/16"	<b>Grid Convergence:</b>	0.20 °

<b>Well</b>	Koch Unit 2H, Marcellus					
<b>Well Position</b>	<b>+N/-S</b>	0.0 usft	<b>Northing:</b>	14,280,137.12 usft	<b>Latitude:</b>	39° 19' 27.218 N
	<b>+E/-W</b>	0.0 usft	<b>Easting:</b>	1,727,996.24 usft	<b>Longitude:</b>	80° 41' 25.124 W
<b>Position Uncertainty</b>	2.0 usft		<b>Wellhead Elevation:</b>	1,388.0 usft	<b>Ground Level:</b>	1,377.0 usft

<b>Wellbore</b>	Original Wellpath				
<b>Magnetics</b>	<b>Model Name</b>	<b>Sample Date</b>	<b>Declination (°)</b>	<b>Dip Angle (°)</b>	<b>Field Strength (nT)</b>
	IGRF2010	10/22/2013	-8.52	66.89	52,379

<b>Design</b>	As Drilled				
<b>Audit Notes:</b>					
<b>Version:</b>	1.0	<b>Phase:</b>	ACTUAL	<b>Tie On Depth:</b>	0.0
<b>Vertical Section:</b>	<b>Depth From (TVD) (usft)</b>	<b>+N/-S (usft)</b>	<b>+E/-W (usft)</b>	<b>Direction (°)</b>	
	0.0	0.0	0.0	333.87	

<b>Survey Program</b>	<b>Date</b>	3/17/2014			
<b>From (usft)</b>	<b>To (usft)</b>	<b>Survey (Wellbore)</b>	<b>Tool Name</b>	<b>Description</b>	
108.0	6,308.0	Survey #2 Def Gyro to KOP (Original Well	SDI Standard Keeper	Scientific Drilling Intl. Standard Wireline Keeper	
6,308.0	13,350.0	Survey #3 SDI MWD (Original Wellpath)	SDI MWD	Scientific Drilling Intl. MWD - Standard ver 1.0.1	

<b>Survey</b>									
<b>MD (usft)</b>	<b>Inc (°)</b>	<b>Azi (azimuth) (°)</b>	<b>TVD (usft)</b>	<b>N/S (usft)</b>	<b>E/W (usft)</b>	<b>V. Sec (usft)</b>	<b>DLeg (°/100usft)</b>		
0.0	0.00	0.00	0.0	0.0	0.0	0.0	0.0	0.00	
108.0	0.31	185.95	108.0	-0.3	0.0	-0.2	0.29		
208.0	0.40	182.98	208.0	-0.9	-0.1	-0.8	0.09		
308.0	0.42	177.28	308.0	-1.6	-0.1	-1.4	0.05		
408.0	0.53	172.87	408.0	-2.4	0.0	-2.2	0.12		
508.0	0.37	175.18	508.0	-3.2	0.1	-2.9	0.16		
608.0	0.37	177.97	608.0	-3.9	0.1	-3.5	0.02		
708.0	0.45	173.34	708.0	-4.6		-4.2	0.09		
808.0	0.41	175.33	808.0	-5.3		-4.9	0.04		
908.0	0.33	171.43	908.0	-6.0		-5.5	0.08		
1,008.0	0.41	174.13	1,008.0	-6.6		-6.1	0.08		

RECEIVED  
Office of Oil and Gas  
MAY 18 2015



<b>Company:</b>	Antero Resources	<b>Local Co-ordinate Reference:</b>	Well Koch Unit 2H
<b>Project:</b>	Doddridge County WV	<b>TVD Reference:</b>	Koch 2H 1377 GL + 19 KB @ 1396.0usft
<b>Site:</b>	Koch/Gains/McCue/Mt Salem Revival	<b>MD Reference:</b>	Koch 2H 1377 GL + 19 KB @ 1396.0usft
<b>Well:</b>	Koch Unit 2H	<b>North Reference:</b>	Grid
<b>Wellbore:</b>	Original Wellpath	<b>Survey Calculation Method:</b>	Minimum Curvature
<b>Design:</b>	As Drilled	<b>Database:</b>	Oklahoma District

Survey									
MD (usft)	Inc (°)	Azi (azimuth) (°)	TVD (usft)	N/S (usft)	E/W (usft)	V. Sec (usft)	DLeg (°/100usft)		
1,108.0	0.33	196.47	1,108.0	-7.2	0.4	-6.7	0.16		
1,208.0	0.35	196.06	1,208.0	-7.8	0.2	-7.1	0.02		
1,308.0	0.38	193.40	1,308.0	-8.4	0.0	-7.6	0.03		
1,408.0	0.39	200.20	1,408.0	-9.1	-0.2	-8.1	0.05		
1,508.0	0.41	178.56	1,508.0	-9.8	-0.3	-8.6	0.15		
1,608.0	0.41	187.92	1,608.0	-10.5	-0.3	-9.3	0.07		
1,708.0	0.46	180.82	1,708.0	-11.2	-0.4	-9.9	0.07		
1,808.0	0.50	184.50	1,808.0	-12.1	-0.4	-10.6	0.05		
1,908.0	0.43	181.56	1,908.0	-12.9	-0.5	-11.4	0.07		
2,008.0	0.46	181.00	2,008.0	-13.6	-0.5	-12.0	0.03		
2,108.0	0.49	177.86	2,107.9	-14.5	-0.5	-12.8	0.04		
2,208.0	0.40	180.22	2,207.9	-15.2	-0.4	-13.5	0.09		
2,308.0	0.34	179.60	2,307.9	-15.9	-0.4	-14.1	0.06		
2,408.0	0.33	211.33	2,407.9	-16.4	-0.6	-14.5	0.18		
2,508.0	0.30	212.44	2,507.9	-16.9	-0.9	-14.8	0.03		
2,608.0	0.26	208.50	2,607.9	-17.3	-1.1	-15.1	0.04		
2,708.0	0.40	236.36	2,707.9	-17.7	-1.5	-15.2	0.21		
2,808.0	0.41	240.59	2,807.9	-18.1	-2.1	-15.3	0.03		
2,908.0	0.31	245.12	2,907.9	-18.4	-2.7	-15.3	0.10		
3,008.0	0.26	244.55	3,007.9	-18.6	-3.1	-15.3	0.05		
3,108.0	0.31	236.72	3,107.9	-18.8	-3.6	-15.3	0.06		
3,208.0	0.28	231.48	3,207.9	-19.1	-4.0	-15.4	0.04		
3,308.0	0.20	235.06	3,307.9	-19.4	-4.3	-15.5	0.08		
3,408.0	0.35	235.10	3,407.9	-19.7	-4.7	-15.6	0.15		
3,508.0	0.30	226.13	3,507.9	-20.0	-5.2	-15.7	0.07		
3,608.0	0.38	221.21	3,607.9	-20.4	-5.6	-15.9	0.09		
3,708.0	0.36	221.89	3,707.9	-20.9	-6.0	-16.2	0.02		
3,808.0	0.50	217.36	3,807.9	-21.5	-6.5	-16.5	0.14		
3,908.0	0.63	216.46	3,907.9	-22.3	-7.1	-16.9	0.13		
4,008.0	0.72	217.41	4,007.9	-23.2	-7.8	-17.4	0.09		
4,108.0	0.66	219.75	4,107.9	-24.2	-8.5	-18.0	0.07		
4,208.0	0.69	227.95	4,207.9	-25.0	-9.3	-18.4	0.10		
4,308.0	0.70	234.50	4,307.9	-25.8	-10.3	-18.6	0.08		
4,408.0	0.67	226.90	4,407.9	-26.5	-11.2	-18.9	0.10		
4,508.0	0.78	232.14	4,507.9	-27.4	-12.2	-19.2	0.13		
4,608.0	0.81	232.16	4,607.9	-28.2	-13.3	-19.5	0.03		
4,708.0	0.84	238.44	4,707.8	-29.0	-14.4	-19.7	0.10		
4,808.0	0.82	233.32	4,807.8	-29.8	-15.6	-19.9	0.08		
4,908.0	0.77	243.30	4,907.8	-30.6	-16.8	-20.0	0.15		
5,008.0	0.88	244.65	5,007.8	-31.2	-18.1	-20.0	0.11		
5,108.0	0.70	243.73	5,107.8	-31.8	-19.3	-20.0	0.18		
5,208.0	0.69	253.46	5,207.8	-32.2	-20.5	-19.9	0.12		
5,308.0	0.74	242.11	5,307.8	-32.7	-21.8	-19.8	0.15		
5,408.0	0.76	257.75	5,407.8	-33.2	-22.8	-19.7	0.21		

RECEIVED  
Office of Oil and Gas  
MAY 18 2015



<b>Company:</b>	Antero Resources	<b>Local Co-ordinate Reference:</b>	Well Koch Unit 2H
<b>Project:</b>	Doddridge County WV	<b>TVD Reference:</b>	Koch 2H 1377 GL + 19 KB @ 1396.0usft
<b>Site:</b>	Koch/Gains/McCue/Mt Salem Revival	<b>MD Reference:</b>	Koch 2H 1377 GL + 19 KB @ 1396.0usft
<b>Well:</b>	Koch Unit 2H	<b>North Reference:</b>	Grid
<b>Wellbore:</b>	Original Wellpath	<b>Survey Calculation Method:</b>	Minimum Curvature
<b>Design:</b>	As Drilled	<b>Database:</b>	Oklahoma District

Survey

MD (usft)	Inc (°)	Azi (azimuth) (°)	TVD (usft)	N/S (usft)	E/W (usft)	V. Sec (usft)	DLeg (°/100usft)
5,508.0	0.75	242.86	5,507.8	-33.6	-24.1	-19.6	0.20
5,608.0	0.85	260.22	5,607.8	-34.0	-25.4	-19.4	0.26
5,708.0	0.68	262.00	5,707.8	-34.2	-26.7	-19.0	0.17
5,808.0	0.53	262.99	5,807.8	-34.4	-27.8	-18.6	0.15
5,908.0	0.56	259.38	5,907.7	-34.5	-28.7	-18.3	0.05
6,008.0	0.68	270.19	6,007.7	-34.6	-29.8	-18.0	0.17
6,108.0	0.61	267.76	6,107.7	-34.6	-30.9	-17.5	0.08
6,208.0	0.35	263.80	6,207.7	-34.7	-31.7	-17.2	0.26
6,308.0	0.16	257.39	6,307.7	-34.7	-32.2	-17.0	0.19
6,383.0	0.47	300.78	6,382.7	-34.6	-32.5	-16.7	0.49
6,474.0	0.30	199.64	6,473.7	-34.6	-32.9	-16.6	0.66
6,519.0	0.17	186.33	6,518.7	-34.8	-33.0	-16.7	0.31
6,563.0	2.06	246.45	6,562.7	-35.2	-33.7	-16.8	4.50
6,608.0	8.53	250.02	6,607.5	-36.7	-37.6	-16.4	14.39
6,653.0	14.25	253.03	6,651.6	-39.4	-46.0	-15.1	12.78
6,698.0	19.49	254.21	6,694.7	-43.1	-58.6	-12.9	11.67
6,743.0	25.09	255.51	6,736.3	-47.5	-75.0	-9.6	12.49
6,788.0	29.72	254.78	6,776.2	-52.8	-95.0	-5.6	10.32
6,833.0	33.56	252.97	6,814.5	-59.4	-117.7	-1.5	8.79
6,878.0	38.05	251.06	6,851.0	-67.6	-142.7	2.2	10.28
6,923.0	42.17	249.13	6,885.4	-77.4	-170.0	5.3	9.56
6,968.0	46.99	249.49	6,917.5	-88.6	-199.5	8.3	10.73
7,013.0	51.66	250.29	6,946.8	-100.3	-231.6	11.9	10.46
7,058.0	56.25	251.26	6,973.3	-112.3	-265.9	16.3	10.35
7,103.0	61.13	251.86	6,996.6	-124.4	-302.4	21.4	10.91
7,148.0	62.25	252.63	7,018.0	-136.5	-340.1	27.2	2.91
7,193.0	63.39	258.02	7,038.5	-146.6	-378.8	35.2	10.95
7,238.0	64.63	265.14	7,058.3	-152.5	-418.8	47.5	14.48
7,283.0	65.96	271.28	7,077.1	-153.8	-459.6	64.3	12.74
7,328.0	66.73	276.08	7,095.2	-151.2	-500.7	84.8	9.92
7,329.0	66.73	276.22	7,095.6	-151.1	-501.6	85.3	12.61
<b>Burkett</b>							
7,373.0	66.88	282.25	7,112.9	-144.6	-541.5	108.7	12.61
7,401.0	68.04	286.52	7,123.6	-138.1	-566.6	125.5	14.66
<b>Tully</b>							
7,418.0	68.79	289.07	7,129.9	-133.3	-581.6	136.5	14.66
7,463.0	70.40	294.57	7,145.6	-117.6	-620.8	167.8	12.00
7,508.0	71.07	299.59	7,160.5	-98.3	-658.6	201.8	10.64
7,552.0	72.15	304.02	7,174.3	-76.3	-694.0	237.2	9.86
7,597.0	73.68	309.08	7,187.6	-50.7	-728.6	275.4	11.27
7,642.0	75.21	312.49	7,199.6	-22.4	-791.4	315.2	8.05
7,655.0	75.81	313.86	7,202.9	-13.8	-820.9	327.0	11.20
<b>Marcellus</b>							
7,687.0	77.32	317.20	7,210.3	8.4	-820.9	356.5	11.20
7,732.0	80.17	322.33	7,219.1	42.1	-820.9	399.3	12.85

RECEIVED  
Office of Oil and Gas  
MAY 14 2015  
WV Department of Environmental Protection





<b>Company:</b> Antero Resources	<b>Local Co-ordinate Reference:</b> Well Koch Unit 2H
<b>Project:</b> Doddridge County WV	<b>TVD Reference:</b> Koch 2H 1377 GL + 19 KB @ 1396.0usft
<b>Site:</b> Koch/Gains/McCue/Mt Salem Revival	<b>MD Reference:</b> Koch 2H 1377 GL + 19 KB @ 1396.0usft
<b>Well:</b> Koch Unit 2H	<b>North Reference:</b> Grid
<b>Wellbore:</b> Original Wellpath	<b>Survey Calculation Method:</b> Minimum Curvature
<b>Design:</b> As Drilled	<b>Database:</b> Oklahoma District

Survey								
MD (usft)	Inc (°)	Azi (azimuth) (°)	TVD (usft)	N/S (usft)	EW (usft)	V. Sec (usft)	DLeg (°/100usft)	
7,776.0	82.27	325.99	7,225.8	77.4	-846.3	442.2	9.51	
7,821.0	83.24	328.68	7,231.5	114.9	-870.4	486.5	6.31	
7,847.0	83.36	329.38	7,234.5	137.1	-883.7	512.3	2.71	
7,878.0	84.33	331.58	7,237.9	163.9	-898.9	543.0	7.72	
7,910.0	86.35	334.04	7,240.5	192.3	-913.4	574.9	9.93	
7,941.0	88.55	337.03	7,241.8	220.5	-926.3	605.9	11.97	
7,986.0	90.13	340.07	7,242.4	262.3	-942.7	650.7	7.61	
8,031.0	90.22	341.60	7,242.2	304.8	-957.5	695.4	3.41	
8,121.0	88.64	340.10	7,243.1	389.8	-987.0	784.7	2.42	
8,210.0	89.16	341.95	7,244.8	474.0	-1,015.9	873.0	2.16	
8,300.0	89.60	345.29	7,245.8	560.3	-1,041.3	961.7	3.74	
8,390.0	90.66	345.64	7,245.6	647.4	-1,063.9	1,049.8	1.24	
8,480.0	90.13	343.53	7,245.0	734.2	-1,087.8	1,138.2	2.42	
8,570.0	88.37	340.28	7,246.2	819.7	-1,115.8	1,227.3	4.11	
8,659.0	89.16	341.33	7,248.1	903.8	-1,145.0	1,315.7	1.48	
8,749.0	89.87	340.72	7,248.8	988.9	-1,174.3	1,405.0	1.04	
8,839.0	90.92	341.16	7,248.2	1,073.9	-1,203.7	1,494.3	1.26	
8,929.0	89.60	340.02	7,247.8	1,158.8	-1,233.6	1,583.7	1.94	
9,019.0	89.52	343.09	7,248.5	1,244.2	-1,262.1	1,672.8	3.41	
9,108.0	89.87	342.65	7,249.0	1,329.2	-1,288.3	1,760.7	0.63	
9,198.0	89.52	340.81	7,249.5	1,414.7	-1,316.5	1,849.9	2.08	
9,288.0	88.55	340.02	7,251.0	1,499.5	-1,346.6	1,939.3	1.39	
9,378.0	87.85	338.52	7,253.8	1,583.6	-1,378.5	2,028.8	1.84	
9,468.0	89.16	342.13	7,256.1	1,668.3	-1,408.8	2,118.2	4.27	
9,558.0	89.96	342.21	7,256.8	1,754.0	-1,436.3	2,207.3	0.89	
9,648.0	89.69	344.59	7,257.1	1,840.2	-1,462.0	2,296.0	2.66	
9,737.0	88.20	345.20	7,258.7	1,926.1	-1,485.2	2,383.4	1.81	
9,827.0	88.29	345.90	7,261.5	2,013.2	-1,507.7	2,471.5	0.78	
9,917.0	87.23	342.83	7,265.0	2,099.8	-1,531.9	2,559.9	3.61	
10,007.0	89.34	343.18	7,267.7	2,185.8	-1,558.2	2,648.7	2.38	
10,096.0	89.87	344.32	7,268.3	2,271.3	-1,583.1	2,736.4	1.41	
10,186.0	89.43	340.37	7,268.9	2,357.0	-1,610.4	2,825.4	4.42	
10,276.0	90.31	341.07	7,269.1	2,442.0	-1,640.1	2,914.7	1.25	
10,366.0	89.52	339.66	7,269.2	2,526.7	-1,670.3	3,004.1	1.80	
10,455.0	89.70	340.54	7,269.8	2,610.4	-1,700.6	3,092.6	1.01	
10,545.0	90.31	339.05	7,269.8	2,694.9	-1,731.7	3,182.1	1.79	
10,635.0	89.25	339.66	7,270.2	2,779.1	-1,763.5	3,271.7	1.36	
10,725.0	89.52	339.93	7,271.1	2,863.6	-1,794.5	3,361.2	0.42	
10,814.0	90.48	340.02	7,271.1	2,947.2	-1,825.0	3,449.7	1.08	
10,904.0	90.04	339.22	7,270.7	3,031.5	-1,856.4	3,539.3	1.01	
10,994.0	89.78	337.56	7,270.9	3,115.2	-1,889.5	3,629.0	1.87	
11,084.0	88.99	337.38	7,271.8	3,198.3	-1,924.9	3,718.8	0.90	
11,173.0	90.22	339.05	7,272.4	3,281.0	-1,957.0	3,807.5	2.33	
11,263.0	90.75	341.60	7,271.7	3,365.7	-1,988.3	3,896.9	2.89	

RECEIVED  
Office of Oil and Gas  
MAY 18 2015



<b>Company:</b>	Antero Resources	<b>Local Co-ordinate Reference:</b>	Well Koch Unit 2H
<b>Project:</b>	Doddridge County WV	<b>TVD Reference:</b>	Koch 2H 1377 GL + 19 KB @ 1396.0usft
<b>Site:</b>	Koch/Gains/McCue/Mt Salem Revival	<b>MD Reference:</b>	Koch 2H 1377 GL + 19 KB @ 1396.0usft
<b>Well:</b>	Koch Unit 2H	<b>North Reference:</b>	Grid
<b>Wellbore:</b>	Original Wellpath	<b>Survey Calculation Method:</b>	Minimum Curvature
<b>Design:</b>	As Drilled	<b>Database:</b>	Oklahoma District

MD (usft)	Inc (°)	Azi (azimuth) (°)	TVD (usft)	N/S (usft)	E/W (usft)	V. Sec (usft)	DLeg (°/100usft)
11,353.0	89.52	337.82	7,271.5	3,450.1	-2,018.5	3,986.5	4.42
11,443.0	89.78	340.81	7,272.0	3,534.3	-2,050.3	4,076.0	3.33
11,532.0	90.48	341.69	7,271.8	3,618.6	-2,078.9	4,164.3	1.26
11,622.0	90.66	342.74	7,270.9	3,704.3	-2,106.4	4,253.3	1.18
11,712.0	89.52	343.09	7,270.8	3,790.3	-2,132.8	4,342.2	1.33
11,802.0	89.69	342.83	7,271.4	3,876.3	-2,159.2	4,431.1	0.35
11,891.0	89.78	344.94	7,271.8	3,961.8	-2,183.9	4,518.7	2.37
11,981.0	89.34	342.39	7,272.5	4,048.2	-2,209.2	4,607.4	2.88
12,071.0	89.16	343.09	7,273.7	4,134.1	-2,235.9	4,696.3	0.80
12,161.0	90.57	343.27	7,273.9	4,220.3	-2,262.0	4,785.1	1.58
12,250.0	90.48	341.77	7,273.1	4,305.2	-2,288.7	4,873.1	1.69
12,340.0	89.78	342.21	7,272.9	4,390.7	-2,316.5	4,962.2	0.92
12,430.0	89.78	343.62	7,273.2	4,476.8	-2,343.0	5,051.1	1.57
12,520.0	89.08	341.42	7,274.1	4,562.6	-2,370.0	5,140.1	2.57
12,609.0	89.96	342.21	7,274.9	4,647.2	-2,397.8	5,228.2	1.33
12,699.0	90.40	342.30	7,274.6	4,732.9	-2,425.2	5,317.2	0.50
12,789.0	90.48	340.37	7,273.9	4,818.1	-2,454.0	5,406.5	2.15
12,879.0	90.66	344.94	7,273.0	4,904.0	-2,480.8	5,495.4	5.08
12,968.0	89.34	342.39	7,273.0	4,989.4	-2,505.8	5,583.1	3.23
13,058.0	89.96	340.19	7,273.5	5,074.6	-2,534.7	5,672.3	2.54
13,148.0	90.40	339.84	7,273.3	5,159.2	-2,565.5	5,761.8	0.62
13,238.0	89.34	341.69	7,273.5	5,244.2	-2,595.1	5,851.1	2.37
13,296.0	89.52	341.77	7,274.0	5,299.3	-2,613.3	5,908.6	0.34
13,350.0	89.52	341.77	7,274.5	5,350.6	-2,630.2	5,962.1	0.00

Measured Depth (usft)	Vertical Depth (usft)	Local Coordinates		Comment
		+N/-S (usft)	+E/-W (usft)	
7,329.0	7,095.6	-151.1	-501.6	Burkett
7,401.0	7,123.6	-138.1	-566.6	Tully
7,655.0	7,202.9	-13.8	-770.6	Marcellus

Checked By: \_\_\_\_\_ Approved By: \_\_\_\_\_ Date: \_\_\_\_\_

RECEIVED  
Office of Oil and Gas  
MAY 18 2015  
WV Department of  
Environmental Protection