

LATITUDE 39°20'00"

7,497'

10,786' TO BOTTOM HOLE

LATITUDE 39°20'00"

LONGITUDE 80°40'00"

12,794'

6,105' TO BOTTOM HOLE

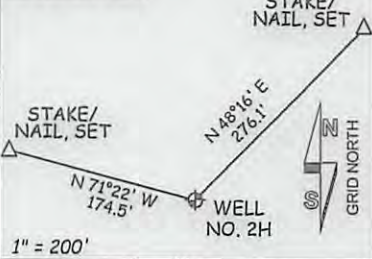
LONGITUDE 80°40'00"

Antero Resources
Appalachian Corporation
Well No. McConnell Unit 2H

NOTES:
 WELL 2H TOP HOLE INFORMATION:
 N: 292,966ft E: 1,662,340ft
 LAT: 39°17'53.55" LON: 80°41'35.37"
 BOTTOM HOLE INFORMATION:
 N: 299,698ft E: 1,659,139ft
 LAT: 39°18'59.66" LON: 80°42'17.24"
 WEST VIRGINIA COORDINATE
 SYSTEM OF 1927 NORTH ZONE.
 MEASUREMENTS TAKEN WITH
 TRIMBLE GEOXT SUBMETER
 MAPPING GRADE GPS UNIT.
 PLAT ORIENTATION, CORNER,
 AND WELL REFERENCE TIE LINES
 ARE BASED ON GRID NORTH.

(NAD) 83 (UTM) ZONE 17 COORDS:
 WELL 2H TOP HOLE INFORMATION:
 N: 4,349,924m E: 526,473m
 BOTTOM HOLE INFORMATION:
 N: 4,351,959m E: 525,464m

REFERENCES



WW NORTH ZONE
GRID NORTH

ROBERT M. HAUG ET AL
D.B. 283 PG. 144
T.M. 9 PAR. 2
88.5 AC ±

FRANCES L. SWENTZEL
W.B. 26 PG. 361
T.M. 13 PAR. 13
32.8 AC ±

DWIGHT E. & TINA M. MOORE
D.B. 222 PG. 87
T.M. 13 PAR. 17
111.04 AC ±

MT SALEM REVIVAL
GROUNDS, INC.
D.B. 239 PG. 275
T.M. 13 PAR. 15.1
37.73 AC ±

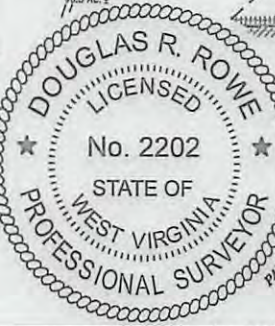
RUTH E. GAUGHAN
D.B. 279 PG. 72
T.M. 13 PAR. 18
34 AC ±

DWIGHT MOORE
ET UX LEASE

DWIGHT E. & TINA M. MOORE
D.B. 222 PG. 87
T.M. 13 PAR. 21
43.08 AC ±

2H BOTTOM HOLE

RONALD L. STUBBS
W.B. 29 PG. 206
T.M. 13 PAR. 23.2
131.48 AC ±



CELEST A. KRAMER
D.B. 290 PG. 552
T.M. 9 PAR. 4
100.40 AC ±

DWIGHT E. & TINA M. MOORE
D.B. 219 PG. 84
T.M. 9 PAR. 5
21.36 AC ±

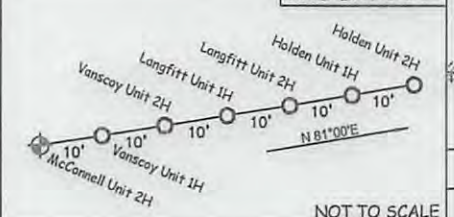
JUDITH A. NOLL ET AL
D.B. 226 PG. 32
T.M. 13 PAR. 28
26 AC ±

DWIGHT E. MOORE
ET UX LEASE
DWIGHT E. MOORE ET AL
D.B. 219 PG. 84
T.M. 9 PAR. 5
21.36 AC ±

ROGER UNDERWOOD ET AL
D.B. 260 PG. 422
T.M. 13 PAR. 29
54.9 AC ±

JOHN M. HICKMAN
D.B. 172 PG. 274
T.M. 13 PAR. 20
19 AC ±

PAD LAYOUT



U.S. HEFLIN
ET UX LEASE
FERN O. WORKMAN
W.B. 19 PG. 341
T.M. 9 PAR. 5
43 AC ±

ROBERT S. MOORE
D.B. 264 PG. 530
T.M. 13 PAR. 1
8.26 AC ±

JOHN E. KERNS,
ET AL LEASE

CECIL M. RANDOLPH ET AL
D.B. 252 PG. 606
T.M. 13 PAR. 11
8.28 AC ±

PHILIP W. SAUNDERS ET AL
D.B. 203 PG. 850
T.M. 13 PAR. 33
5.20 AC ±

AMANDA L. DAVIS
ET AL
D.B. 225 PG. 701
T.M. 13 PAR. 2
8.26 AC ±

CLYDE R. FRASHURE JR
D.B. 198 PG. 572
T.M. 16 PAR. 1
32.29 AC ±

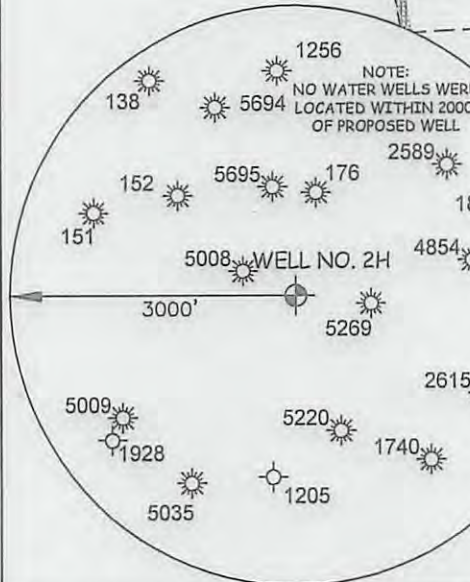
AMANDA L. DAVIS
ET AL
D.B. 225 PG. 701
T.M. 13 PAR. 2
8.26 AC ±

CLYDE R. FRASHURE JR
D.B. 198 PG. 572
T.M. 15 PAR. 4
98.91 AC ±

JOHN E. SMITH
LEASE
M & R
INVESTMENTS LLC
D.B. 276 PG. 612
T.M. 13 PAR. 5
60.5 AC ±

IRON ROD,
FOUND

RALPH J. VALENTINE ET AL
D.B. 220 PG. 159
T.M. 16 PAR. 7.5
72.37 AC ±



LANDING POINT
N:292899
E:1661282

WELL NO. 2H

JOB # 12-059WA
 DRAWING # MCCONNELLUNITP2HR1
 SCALE 1" = 1000'
 MINIMUM DEGREE OF ACCURACY SUBMETER
 PROVEN SOURCE OF ELEV. SUBMETER MAPPING GRADE GPS

THE UNDERSIGNED, HEREBY CERTIFY THAT THIS PLAT IS CORRECT TO THE BEST OF MY KNOWLEDGE AND BELIEF AND SHOWS ALL THE INFORMATION REQUIRED BY LAW AND THE REGULATIONS ISSUED AND PERSCRIBED BY THE DEPARTMENT OF ENVIRONMENTAL PROTECTION.



STATE OF WEST VIRGINIA, DIVISION
 OF ENVIRONMENTAL PROTECTION,
 OFFICE OF OIL AND GAS

WILLOW LAND SURVEYING PLLC
 220 MASONIC AVE. PENNSBORO
 WEST VIRGINIA 26415

LEGEND

Surface Owner Boundary Lines +/-

Interior Surface Tracts +/-

Existing Fence

Found monument, as noted

DOUGLAS R. ROWE P.S. 2202

DATE 03/13/13

OPERATOR'S WELL# MCCONNELL UNIT #2H

API WELL # H6A
47 - 017 - 6263

STATE COUNTY PERMIT

STATE OF WEST VIRGINIA
 DEPARTMENT OF ENERGY
 DIVISION OF OIL AND GAS

WELL TYPE: OIL GAS X LIQUID INJECTION WASTE DISPOSAL
 (IF "GAS") PRODUCTION X STORAGE DEEP SHALLOW X

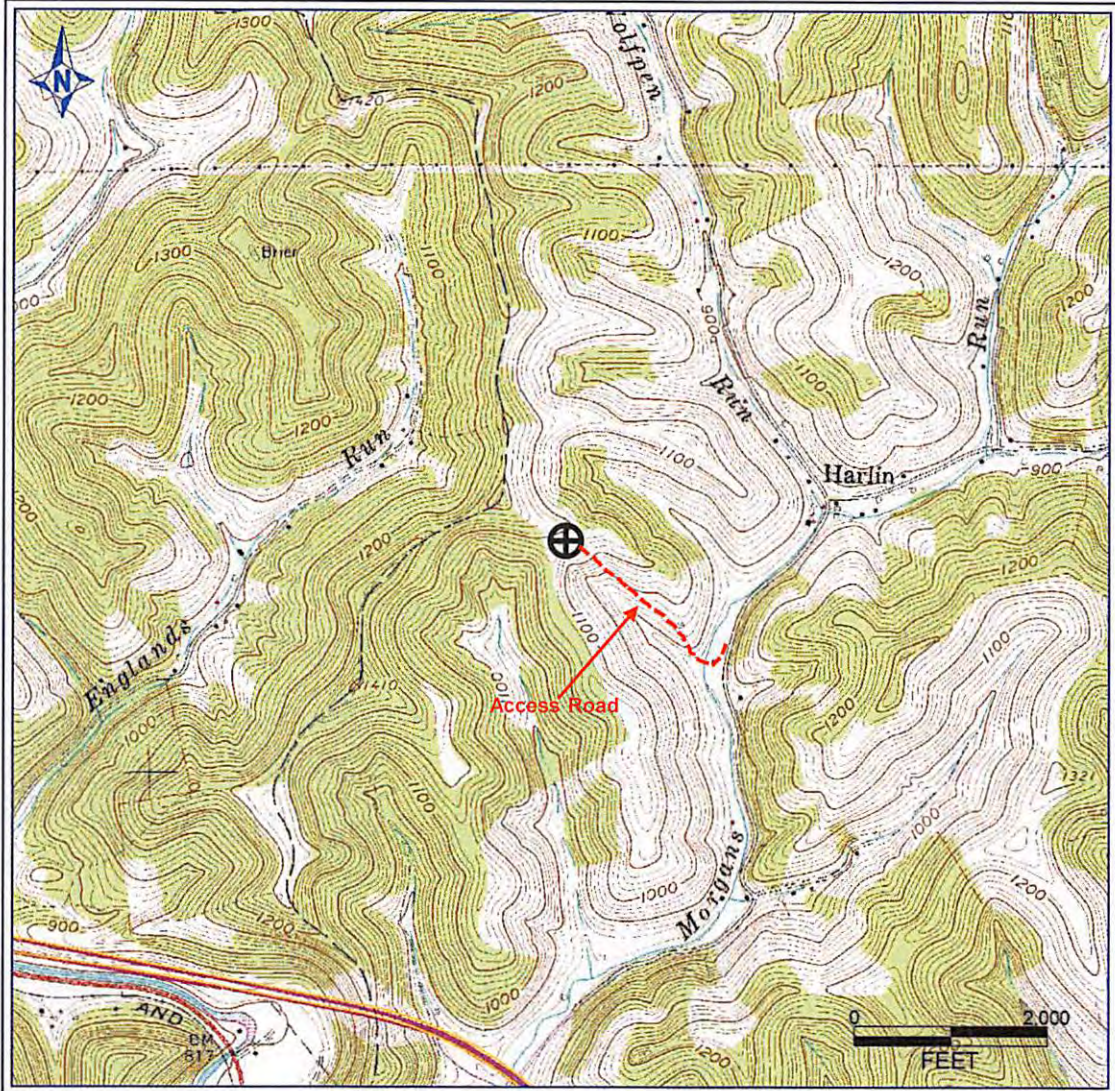
LOCATION: ELEVATION 1,180' WATERSHED MORGANS RUN
 QUADRANGLE SMITHBURG 7.5' DISTRICT GRANT COUNTY DODDRIDGE

SURFACE OWNER DELBERT E. LEATHERMAN ET AL ACREAGE 209.48 ACRES +/-

OIL & GAS ROYALTY OWNER DEPI; M.M. NEELY ET AL; JOHN E. SMITH; JOHN W. KERNS ET AL;
 W.S. HEFLIN ET UX; DWIGHT E. MOORE ET UX; PANZY HEFLIN ET AL; DWIGHT MOORE ET UX
 LEASE ACREAGE 71 ACRES±; 300 ACRES±; 60.5 ACRES±; 86 ACRES±;
 46 ACRES±; 21.36 ACRES±; 126 ACRES±; 238 ACRES±

PROPOSED WORK: DRILL X CONVERT DRILL DEEPER REDRILL FRACTURE OR STIMULATE X
 PLUG OFF OLD FORMATION PERFORATE NEW FORMATION X OTHER PHYSICAL CHANGE IN WELL
 (SPECIFY) PLUG & ABANDON CLEAN OUT & REPLUG
 TARGET FORMATION MARCELLUS ESTIMATED DEPTH 7,300' TVD 16,000' MD

WELL OPERATOR ANTERO RESOURCES APPALACHIAN CORP. DESIGNATED AGENT DIANNA STAMPER
 ADDRESS 1625 17TH STREET ADDRESS 5400 D BIG TYLER ROAD
 DENVER, CO 80202 CHARLESTON, WV 25313



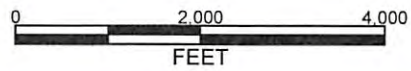
PETRA 11/29/2012 3:57:38 PM

Antero Resources Corporation

APPALACHIAN BASIN

McConnell Unit 2H

Doddridge County



REMARKS
QUADRANGLE: SMITHBURG
WATERSHED: MORGANS RUN
DISTRICT: GRANT

Date: 11/30/12

Received
Office of Oil & Gas

APR 12 2013