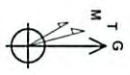




Irons Unit 1H
Doddridge County WW
 Northing: 14260734.77
 Easting: 1751070.53
 As Drilled



To ground Magnetic North to Grid, Subtract 8.82°
 To convert True North to Grid, Subtract 0.25°

Azimuths to Grid North
 True North: -0.25°
 Magnetic North: -8.82°
 Magnetic Field
 Strength: 52315.7nT
 Dip Angle: 66.82°
 Date: 1/8/2014
 Model: IGRF2010

WELL DETAILS Irons Unit 1H
 Ground Level: 1364.0
 Elevation: 0.0
 +N/S: 0.0 +E/W: 0.0
 Northing: 14260734.77
 Easting: 1751070.53
 Latitude: 16° 14' 49.180" 36' 32.465" W
 Longitude: 96° 32' 46.5" W

PROJECT DETAILS: Doddridge County WW
 Geodetic System: Universal Transverse Mercator (US Survey Feet)
 Datum: NAD 1983 (NADCON CONUS)
 Ellipsoid: Clarke 1866
 Zone: Zone 17N (84 W to 78 W)
 System Datum: Mean Sea Level

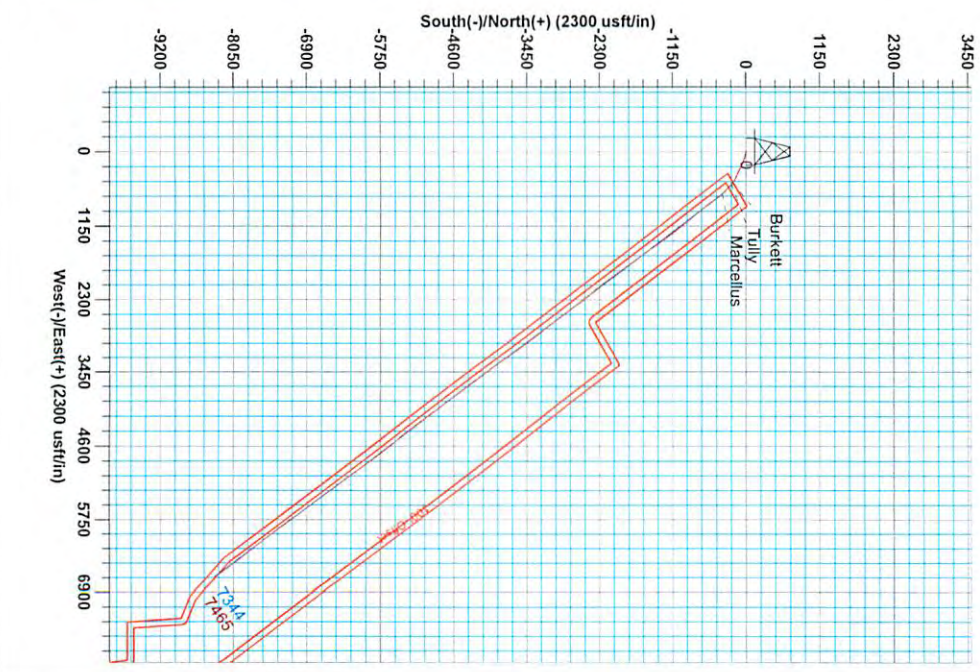
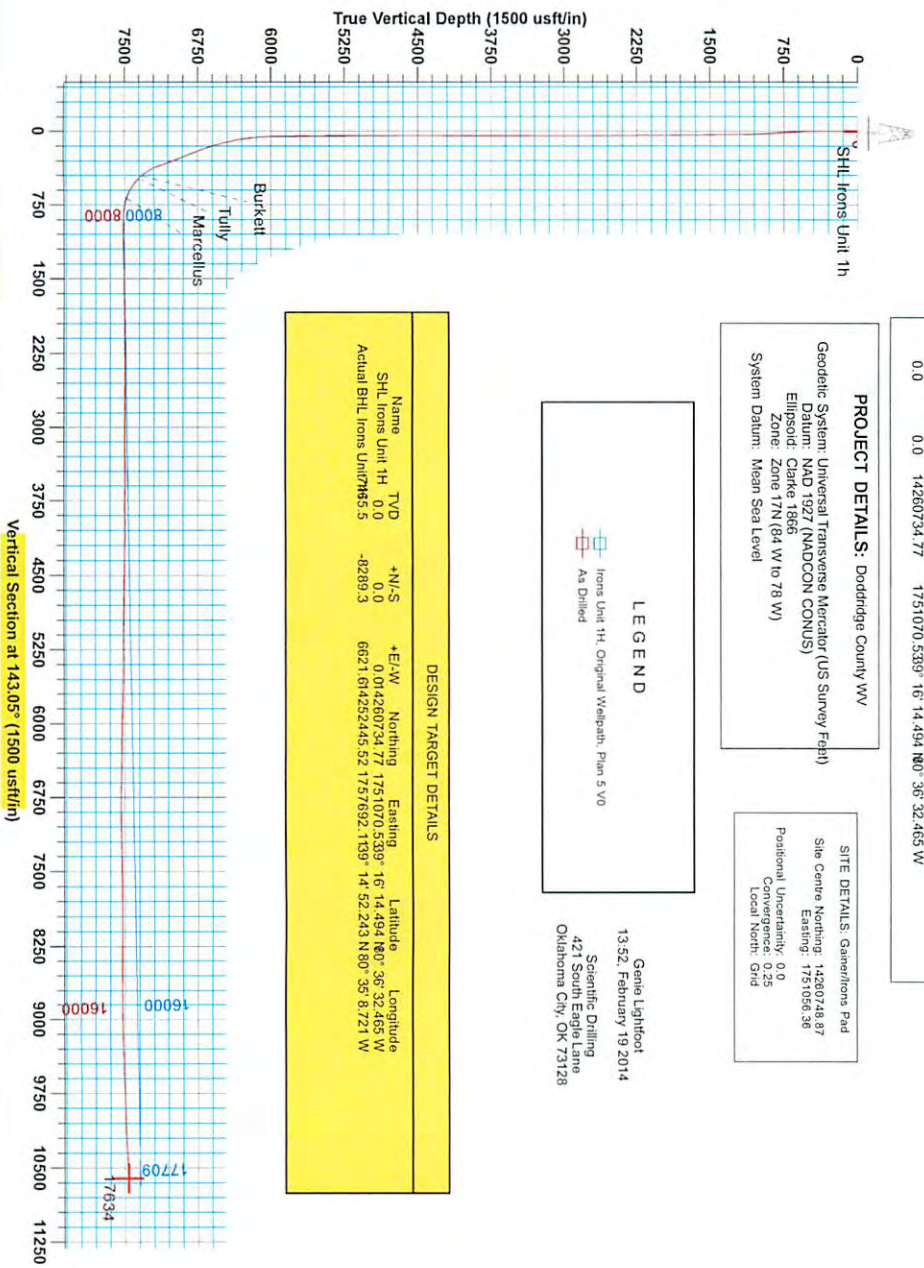
SITE DETAILS: Gamierions Pad
 Site Centre Northing: 14260748.87
 Easting: 1751056.58
 Positional Uncertainty: 0.0
 Convergence: 0.25
 Local North Grid

LEGEND

 Irons Unit 1H, Original Wellpath, Plan 5 V0
 As Drilled

Gene Lightfoot
 13.52, February 19, 2014
 Scientific Drilling
 421 South Eagle Lane
 Oklahoma City, OK 73128

DESIGN TARGET DETAILS							
Name	TVD	+N/S	+E/W	Northing	Eastng	Latitude	Longitude
SHL Irons Unit 1H	0.0	0.0	0.0	14260734.77	1751070.5389	16° 14' 49.180"	36° 32' 46.5" W
Actual BHL Irons Unit 1H	785.5	-8289.3	6621.614252445	52.1757892	1139.14	52.243 N	80° 35' 6.721 W



Received
 Office of Oil & Gas
 MAY 18 2015

06/05/2015



Antero Resources

Doddridge County WV
Gainer/Irons Pad
Irons Unit 1H
Original Wellpath

Design: As Drilled

EOW Completion Report

19 February, 2014

Received
Office of Oil & Gas
MAY 18 2015



06/05/2015



Company:	Antero Resources	Local Co-ordinate Reference:	Well Irons Unit 1H
Project:	Doddridge County WV	TVD Reference:	Irons 1H 1364 GL + 25 KB @ 1389.0usft
Site:	Gainer/Irons Pad	MD Reference:	Irons 1H 1364 GL + 25 KB @ 1389.0usft
Well:	Irons Unit 1H	North Reference:	Grid
Wellbore:	Original Wellpath	Survey Calculation Method:	Minimum Curvature
Design:	As Drilled	Database:	Oklahoma District

Project	Doddridge County WV, McClellan District		
Map System:	Universal Transverse Mercator (US Survey Feet)	System Datum:	Mean Sea Level
Geo Datum:	NAD 1927 (NADCON CONUS)		
Map Zone:	Zone 17N (84 W to 78 W)		

Site	Gainer/Irons Pad				
Site Position:		Northing:	14,260,748.87 usft	Latitude:	39° 16' 14.634 N
From:	Map	Easting:	1,751,056.36 usft	Longitude:	80° 36' 32.644 W
Position Uncertainty:	0.0 usft	Slot Radius:	13-3/16"	Grid Convergence:	0.25 °

Well	Irons Unit 1H, Marcellus					
Well Position	+N/-S	0.0 usft	Northing:	14,260,734.77 usft	Latitude:	39° 16' 14.494 N
	+E/-W	0.0 usft	Easting:	1,751,070.53 usft	Longitude:	80° 36' 32.465 W
Position Uncertainty		2.0 usft	Wellhead Elevation:	1,389.0 usft	Ground Level:	1,364.0 usft

Wellbore	Original Wellpath				
-----------------	-------------------	--	--	--	--

Magnetics	Model Name	Sample Date	Declination (°)	Dip Angle (°)	Field Strength (nT)
	IGRF2010	1/8/2014	-8.57	66.82	52,316

Design	As Drilled				
---------------	------------	--	--	--	--

Audit Notes:					
Version:	1.0	Phase:	ACTUAL	Tie On Depth:	0.0
Vertical Section:	Depth From (TVD) (usft)	+N/-S (usft)	+E/-W (usft)	Direction (°)	
	0.0	0.0	0.0	143.05	

Survey Program	Date	2/19/2014			
From (usft)	To (usft)	Survey (Wellbore)	Tool Name	Description	
100.0	7,081.6	Survey #4 Def Gyro to KOP (Original Well)	SDI Standard Keeper	Scientific Drilling Intl. Standard Wireline Keeper	
7,173.0	17,634.0	Survey #5 MWD (Original Wellpath)	MWD SDI	MWD - Standard ver 1.0.1	

Survey	MD (usft)	Inc (°)	Azi (azimuth) (°)	TVD (usft)	N/S (usft)	E/W (usft)	V. Sec (usft)	DLeg (°/100usft)
	0.0	0.00	0.00	0.0	0.0	0.0	0.0	0.00
	100.0	0.25	272.33	100.0	0.0	-0.2	-0.1	0.25
	200.0	0.29	269.64	200.0	0.0	-0.7	-0.4	0.04
	300.0	0.22	281.02	300.0	0.1	-1.1	-0.7	0.09
	400.0	0.54	64.64	400.0	0.3	-0.9	-0.8	0.73
	500.0	1.96	89.33	500.0	0.5	1.2	0.3	1.49
	600.0	3.92	100.84	599.8	-0.1	6.3	3.9	2.04
	700.0	5.32	106.24	699.5	-2.1	14.1	10.1	1.46
	800.0	5.65	107.25	799.0	-4.8	23.3	17.8	0.34
	900.0	4.30	106.85	898.7	-7.4	31.6	24.8	1.35
	1,000.0	2.04	102.64	998.5	-8.8	36.9	29.2	2.27

MAY 18 2015



EOW Completion Report



Company:	Antero Resources	Local Co-ordinate Reference:	Well Irons Unit 1H
Project:	Doddridge County WV	TVD Reference:	Irons 1H 1364 GL + 25 KB @ 1389.0usft
Site:	Gainer/Irons Pad	MD Reference:	Irons 1H 1364 GL + 25 KB @ 1389.0usft
Well:	Irons Unit 1H	North Reference:	Grid
Wellbore:	Original Wellpath	Survey Calculation Method:	Minimum Curvature
Design:	As Drilled	Database:	Oklahoma District

Survey

MD (usft)	Inc (°)	Azi (azimuth) (°)	TVD (usft)	N/S (usft)	E/W (usft)	V. Sec (usft)	DLeg (°/100usft)
1,100.0	1.55	103.12	1,098.5	-9.5	39.9	31.6	0.49
1,200.0	1.21	99.19	1,198.4	-10.0	42.3	33.4	0.35
1,300.0	1.00	104.88	1,298.4	-10.4	44.2	34.9	0.24
1,400.0	0.73	104.31	1,398.4	-10.8	45.6	36.1	0.27
1,500.0	0.81	113.63	1,498.4	-11.2	46.9	37.2	0.15
1,600.0	0.92	123.58	1,598.4	-11.9	48.2	38.5	0.19
1,700.0	0.76	119.26	1,698.4	-12.7	49.5	39.9	0.17
1,800.0	0.72	117.12	1,798.4	-13.3	50.6	41.1	0.05
1,900.0	0.70	115.14	1,898.4	-13.9	51.7	42.2	0.03
2,000.0	0.61	110.53	1,998.3	-14.3	52.8	43.2	0.10
2,100.0	0.71	105.35	2,098.3	-14.7	53.9	44.1	0.12
2,200.0	0.42	118.81	2,198.3	-15.0	54.8	44.9	0.32
2,300.0	0.60	128.96	2,298.3	-15.5	55.5	45.8	0.20
2,400.0	0.53	112.10	2,398.3	-16.0	56.4	46.7	0.18
2,500.0	0.32	118.66	2,498.3	-16.3	57.0	47.3	0.22
2,600.0	0.29	90.85	2,598.3	-16.5	57.5	47.7	0.15
2,700.0	0.15	129.19	2,698.3	-16.5	57.9	48.0	0.20
2,800.0	0.24	164.22	2,798.3	-16.8	58.0	48.3	0.15
2,900.0	0.12	61.65	2,898.3	-17.0	58.2	48.6	0.29
3,000.0	0.15	267.19	2,998.3	-16.9	58.1	48.5	0.26
3,100.0	0.25	251.93	3,098.3	-17.0	57.8	48.3	0.11
3,200.0	0.09	255.46	3,198.3	-17.1	57.5	48.2	0.16
3,300.0	0.45	295.32	3,298.3	-17.0	57.1	47.9	0.39
3,400.0	0.56	288.79	3,398.3	-16.6	56.3	47.1	0.12
3,500.0	0.51	288.37	3,498.3	-16.3	55.4	46.3	0.05
3,600.0	0.08	290.52	3,598.3	-16.2	54.9	45.9	0.43
3,700.0	0.07	353.20	3,698.3	-16.1	54.8	45.8	0.08
3,800.0	0.20	110.39	3,798.3	-16.1	55.0	45.9	0.24
3,900.0	0.20	61.68	3,898.3	-16.1	55.3	46.1	0.16
4,000.0	0.15	243.61	3,998.3	-16.0	55.3	46.1	0.35
4,100.0	0.13	61.09	4,098.3	-16.0	55.3	46.1	0.28
4,200.0	0.15	260.11	4,198.3	-16.0	55.3	46.0	0.28
4,300.0	0.24	241.87	4,298.3	-16.1	55.0	45.9	0.11
4,400.0	0.18	287.29	4,398.3	-16.2	54.6	45.8	0.17
4,500.0	0.12	329.01	4,498.3	-16.0	54.4	45.5	0.12
4,600.0	0.09	122.34	4,598.3	-16.0	54.5	45.5	0.20
4,700.0	0.35	60.34	4,698.3	-15.9	54.8	45.6	0.32
4,800.0	0.41	47.84	4,798.3	-15.5	55.3	45.6	0.10
4,900.0	0.56	71.98	4,898.3	-15.1	56.0	45.8	0.25
5,000.0	0.44	46.36	4,998.3	-14.7	56.8	45.9	0.25
5,100.0	0.47	73.46	5,098.3	-14.3	57.5	46.0	0.22
5,200.0	0.73	87.81	5,198.3	-14.2	58.5	46.5	0.30
5,300.0	0.94	89.73	5,298.3	-14.1	59.9	47.3	0.21
5,400.0	0.77	106.25	5,398.3	-14.3	61.4	48.4	0.30



Company:	Antero Resources	Local Co-ordinate Reference:	Well Irons Unit 1H
Project:	Doddridge County WV	TVD Reference:	Irons 1H 1364 GL + 25 KB @ 1389.0usft
Site:	Gainer/Irons Pad	MD Reference:	Irons 1H 1364 GL + 25 KB @ 1389.0usft
Well:	Irons Unit 1H	North Reference:	Grid
Wellbore:	Original Wellpath	Survey Calculation Method:	Minimum Curvature
Design:	As Drilled	Database:	Oklahoma District

Survey									
MD (usft)	Inc (°)	Azi (azimuth) (°)	TVD (usft)	N/S (usft)	E/W (usft)	V. Sec (usft)	DLeg (°/100usft)		
5,500.0	0.68	113.87	5,498.3	-14.7	62.6	49.4	0.13		
5,600.0	0.69	117.11	5,598.3	-15.3	63.7	50.5	0.04		
5,700.0	0.75	123.30	5,698.2	-15.9	64.8	51.6	0.10		
5,800.0	0.17	138.57	5,798.2	-16.4	65.4	52.4	0.59		
5,900.0	0.20	45.41	5,898.2	-16.4	65.6	52.5	0.27		
6,000.0	2.52	110.38	5,998.2	-17.0	67.8	54.4	2.44		
6,100.0	5.19	98.71	6,098.0	-18.4	74.3	59.4	2.77		
6,200.0	7.82	100.04	6,197.3	-20.3	85.5	67.6	2.63		
6,300.0	10.81	109.15	6,296.0	-24.6	101.1	80.4	3.32		
6,400.0	13.42	113.25	6,393.8	-32.2	120.6	98.3	2.75		
6,500.0	16.48	109.66	6,490.4	-41.6	144.6	120.2	3.20		
6,600.0	19.18	111.86	6,585.6	-52.5	173.2	146.1	2.78		
6,700.0	22.00	113.74	6,679.2	-66.1	205.6	176.5	2.90		
6,800.0	23.34	115.88	6,771.4	-82.3	240.6	210.4	1.57		
6,900.0	23.61	117.32	6,863.2	-100.2	276.2	246.1	0.63		
7,000.0	24.30	117.04	6,954.5	-118.7	312.3	282.6	0.70		
7,081.6	23.66	114.63	7,029.1	-133.2	342.2	312.1	1.43		
7,173.0	22.27	110.64	7,113.3	-146.9	375.1	342.9	2.28		
7,202.0	21.66	111.37	7,140.2	-150.8	385.2	352.1	2.30		
7,234.0	22.84	113.78	7,169.8	-155.5	396.4	362.5	4.66		
7,266.0	26.53	117.26	7,198.8	-161.2	408.4	374.4	12.39		
7,298.0	30.59	121.11	7,226.9	-168.7	421.7	388.4	13.92		
7,330.0	34.00	122.62	7,254.0	-177.8	436.3	404.3	10.95		
7,362.0	35.79	123.40	7,280.2	-187.7	451.6	421.5	5.76		
7,394.0	37.29	125.00	7,306.0	-198.5	467.4	439.5	5.55		
7,419.0	39.89	126.80	7,325.5	-207.6	480.0	454.4	11.34		
Burkett									
7,427.0	40.73	127.34	7,331.6	-210.7	484.1	459.4	11.34		
7,459.0	44.81	128.99	7,355.1	-224.2	501.2	480.4	13.22		
7,462.0	45.25	129.11	7,357.2	-225.5	502.8	482.5	15.03		
Tully									
7,491.0	49.54	130.19	7,376.8	-239.1	519.3	503.2	15.03		
7,523.0	53.08	131.96	7,396.8	-255.5	538.1	527.7	11.87		
7,555.0	55.70	133.19	7,415.5	-273.1	557.2	553.2	8.76		
7,587.0	58.14	133.37	7,432.9	-291.5	576.8	579.7	7.64		
7,619.0	62.50	134.03	7,448.8	-310.7	596.8	607.1	13.74		
7,651.0	66.49	135.48	7,462.5	-331.1	617.3	635.7	13.12		
7,683.0	69.42	137.03	7,474.5	-352.5	637.8	665.1	10.20		
7,702.0	71.04	137.54	7,481.0	-365.6	650.0	682.9	8.90		
Marcellus									
7,715.0	72.15	137.89	7,485.1	-374.7	658.3	695.2	8.90		
7,747.0	75.55	139.25	7,494.0	-397.8	678.6	725.8	11.38		
7,779.0	77.62	140.86	7,501.4	-421.6	698.6	756.9	8.11		
7,812.0	79.10	141.95	7,508.1	-446.9	718.7	789.2	5.53		
7,844.0	82.60	142.60	7,513.1	-471.9	738.1	820.8	11.12		



Company:	Antero Resources	Local Co-ordinate Reference:	Well Irons Unit 1H
Project:	Doddridge County WV	TVD Reference:	Irons 1H 1364 GL + 25 KB @ 1389.0usft
Site:	Gainer/Irons Pad	MD Reference:	Irons 1H 1364 GL + 25 KB @ 1389.0usft
Well:	Irons Unit 1H	North Reference:	Grid
Wellbore:	Original Wellpath	Survey Calculation Method:	Minimum Curvature
Design:	As Drilled	Database:	Oklahoma District

Survey							
MD (usft)	Inc (°)	Azi (azimuth) (°)	TVD (usft)	N/S (usft)	E/W (usft)	V. Sec (usft)	DLeg (°/100usft)
7,901.0	89.60	144.11	7,517.0	-517.5	772.0	877.6	12.56
7,942.0	90.57	144.37	7,517.0	-550.8	796.0	918.6	2.45
7,975.0	91.51	144.50	7,516.4	-577.6	815.1	951.6	2.88
8,071.0	90.00	142.03	7,515.1	-654.5	872.6	1,047.6	3.02
8,168.0	90.87	141.55	7,514.4	-730.7	932.5	1,144.5	1.02
8,264.0	91.98	142.76	7,512.0	-806.5	991.4	1,240.5	1.71
8,361.0	89.69	140.42	7,510.6	-882.5	1,051.7	1,337.4	3.38
8,457.0	91.01	143.44	7,510.0	-958.1	1,110.9	1,433.4	3.43
8,553.0	90.81	141.47	7,508.5	-1,034.2	1,169.4	1,529.4	2.06
8,650.0	91.27	143.47	7,506.7	-1,111.1	1,228.4	1,626.4	2.12
8,746.0	90.94	143.19	7,504.8	-1,188.1	1,285.8	1,722.3	0.45
8,842.0	90.60	143.71	7,503.5	-1,265.2	1,342.9	1,818.3	0.65
8,939.0	90.13	142.21	7,502.9	-1,342.6	1,401.3	1,915.3	1.62
9,035.0	93.29	147.87	7,500.1	-1,421.2	1,456.3	2,011.2	6.75
9,132.0	88.62	144.62	7,498.4	-1,501.8	1,510.2	2,108.0	5.86
9,228.0	90.44	144.28	7,499.2	-1,579.9	1,566.0	2,203.9	1.93
9,325.0	91.34	144.46	7,497.7	-1,658.7	1,622.5	2,300.9	0.95
9,421.0	89.63	142.56	7,496.9	-1,735.9	1,679.6	2,396.9	2.66
9,517.0	88.39	142.64	7,498.6	-1,812.2	1,737.9	2,492.9	1.29
9,614.0	89.87	143.53	7,500.0	-1,889.7	1,796.1	2,589.9	1.78
9,710.0	91.04	146.31	7,499.3	-1,968.3	1,851.3	2,685.8	3.14
9,807.0	89.40	143.66	7,498.9	-2,047.7	1,906.9	2,782.7	3.21
9,903.0	90.47	144.89	7,499.0	-2,125.6	1,963.0	2,878.7	1.70
10,000.0	90.10	144.71	7,498.5	-2,204.9	2,018.9	2,975.6	0.42
10,096.0	89.53	138.88	7,498.8	-2,280.3	2,078.2	3,071.6	6.10
10,193.0	90.30	140.00	7,499.0	-2,354.0	2,141.3	3,168.4	1.40
10,289.0	90.03	138.85	7,498.7	-2,426.9	2,203.8	3,264.2	1.23
10,384.0	90.84	142.39	7,498.0	-2,500.3	2,264.0	3,359.1	3.82
10,480.0	90.70	142.76	7,496.7	-2,576.5	2,322.4	3,455.1	0.41
10,570.0	91.11	144.42	7,495.3	-2,649.0	2,375.8	3,545.1	1.90
10,661.0	88.96	143.34	7,495.2	-2,722.5	2,429.4	3,636.0	2.64
10,752.0	88.29	141.88	7,497.4	-2,794.7	2,484.6	3,727.0	1.76
10,842.0	89.80	143.00	7,498.9	-2,866.1	2,539.5	3,817.0	2.09
10,933.0	90.44	141.96	7,498.7	-2,938.2	2,594.9	3,908.0	1.34
11,024.0	92.02	145.74	7,496.8	-3,011.7	2,648.6	3,998.9	4.50
11,115.0	89.43	143.51	7,495.6	-3,085.9	2,701.2	4,089.9	3.76
11,205.0	86.64	140.30	7,498.7	-3,156.6	2,756.7	4,179.8	4.72
11,297.0	89.29	142.13	7,502.0	-3,228.3	2,814.3	4,271.7	3.50
11,387.0	89.78	144.29	7,502.7	-3,300.4	2,868.2	4,361.7	2.46
11,478.0	87.82	139.97	7,504.6	-3,372.2	2,924.0	4,452.6	5.21
11,569.0	88.55	143.03	7,507.5	-3,443.3	2,980.7	4,543.5	3.46
11,666.0	89.06	145.47	7,509.5	-3,522.0	3,037.3	4,640.5	2.57
11,762.0	88.45	144.18	7,511.6	-3,600.5	3,092.6	4,736.4	1.49
11,858.0	89.53	145.80	7,513.3	-3,679.1	3,147.7	4,832.3	2.03



Company:	Antero Resources	Local Co-ordinate Reference:	Well Irons Unit 1H
Project:	Doddridge County WV	TVD Reference:	Irons 1H 1364 GL + 25 KB @ 1389.0usft
Site:	Gainer/Irons Pad	MD Reference:	Irons 1H 1364 GL + 25 KB @ 1389.0usft
Well:	Irons Unit 1H	North Reference:	Grid
Wellbore:	Original Wellpath	Survey Calculation Method:	Minimum Curvature
Design:	As Drilled	Database:	Oklahoma District

Survey

MD (usft)	Inc (°)	Azi (azimuth) (°)	TVD (usft)	N/S (usft)	E/W (usft)	V. Sec (usft)	DLeg (°/100usft)
11,954.0	89.33	143.58	7,514.2	-3,757.4	3,203.1	4,928.3	2.32
12,051.0	88.29	143.72	7,516.3	-3,835.5	3,260.6	5,025.2	1.08
12,147.0	88.89	142.27	7,518.6	-3,912.2	3,318.4	5,121.2	1.63
12,243.0	89.93	143.61	7,519.6	-3,988.8	3,376.2	5,217.2	1.77
12,340.0	90.30	142.78	7,519.4	-4,066.5	3,434.3	5,314.2	0.94
12,436.0	89.97	140.75	7,519.2	-4,141.9	3,493.8	5,410.2	2.14
12,533.0	90.30	142.49	7,519.0	-4,217.9	3,554.0	5,507.1	1.83
12,629.0	88.59	143.88	7,519.9	-4,294.7	3,611.5	5,603.1	2.30
12,726.0	88.46	143.70	7,522.4	-4,373.0	3,668.8	5,700.1	0.23
12,822.0	87.97	142.53	7,525.4	-4,449.7	3,726.4	5,796.0	1.32
12,918.0	87.48	142.39	7,529.2	-4,525.8	3,784.8	5,892.0	0.53
13,015.0	89.16	142.19	7,532.0	-4,602.5	3,844.1	5,988.9	1.74
13,111.0	89.63	142.32	7,533.0	-4,678.4	3,902.9	6,084.9	0.51
13,207.0	89.80	145.52	7,533.5	-4,756.0	3,959.4	6,180.9	3.34
13,304.0	89.66	145.58	7,534.0	-4,836.0	4,014.3	6,277.8	0.16
13,400.0	89.50	144.05	7,534.7	-4,914.4	4,069.6	6,373.7	1.60
13,497.0	89.30	144.69	7,535.7	-4,993.2	4,126.1	6,470.7	0.69
13,593.0	88.46	143.58	7,537.6	-5,071.0	4,182.3	6,566.6	1.45
13,690.0	89.13	142.79	7,539.6	-5,148.7	4,240.4	6,663.6	1.07
13,785.0	89.33	142.76	7,540.9	-5,224.3	4,297.9	6,758.6	0.21
13,882.0	90.74	145.30	7,540.8	-5,302.8	4,354.9	6,855.6	2.99
13,978.0	89.87	141.63	7,540.3	-5,379.9	4,412.0	6,951.6	3.93
14,075.0	90.34	140.88	7,540.1	-5,455.6	4,472.7	7,048.5	0.91
14,171.0	91.41	138.82	7,538.7	-5,528.9	4,534.6	7,144.4	2.42
14,268.0	91.36	141.65	7,536.3	-5,603.5	4,596.6	7,241.2	2.92
14,364.0	92.18	142.94	7,533.4	-5,679.4	4,655.3	7,337.1	1.59
14,460.0	90.64	143.45	7,531.0	-5,756.2	4,712.8	7,433.1	1.69
14,557.0	91.01	143.55	7,529.6	-5,834.2	4,770.5	7,530.1	0.40
14,653.0	90.30	144.02	7,528.5	-5,911.6	4,827.2	7,626.1	0.89
14,846.0	91.04	143.35	7,526.3	-6,067.1	4,941.5	7,819.0	0.52
14,942.0	89.80	142.70	7,525.6	-6,143.8	4,999.2	7,915.0	1.46
15,039.0	88.89	144.30	7,526.7	-6,221.8	5,056.9	8,012.0	1.90
15,135.0	89.35	143.67	7,528.1	-6,299.4	5,113.4	8,108.0	0.81
15,231.0	89.63	144.81	7,529.0	-6,377.3	5,169.5	8,204.0	1.22
15,328.0	89.60	144.24	7,529.6	-6,456.3	5,225.8	8,300.9	0.59
15,424.0	90.84	145.69	7,529.3	-6,534.9	5,280.9	8,396.9	1.99
15,521.0	90.10	143.92	7,528.5	-6,614.2	5,336.8	8,493.8	1.98
15,617.0	88.15	142.87	7,529.9	-6,691.2	5,394.0	8,589.8	2.31
15,713.0	89.16	142.59	7,532.2	-6,767.6	5,452.1	8,685.8	1.09
15,810.0	91.01	142.46	7,532.1	-6,844.6	5,511.1	8,782.8	1.91
15,906.0	91.44	142.84	7,530.0	-6,920.9	5,569.4	8,878.8	0.60
16,003.0	91.28	142.22	7,527.7	-6,997.9	5,628.4	8,975.7	0.66
16,099.0	91.44	143.40	7,525.4	-7,074.3	5,686.4	9,071.7	1.24
16,196.0	91.75	143.78	7,522.7	-7,152.3	5,743.9	9,168.6	0.51



Company:	Antero Resources	Local Co-ordinate Reference:	Well Irons Unit 1H
Project:	Doddridge County WV	TVD Reference:	Irons 1H 1364 GL + 25 KB @ 1389.0usft
Site:	Gainer/Irons Pad	MD Reference:	Irons 1H 1364 GL + 25 KB @ 1389.0usft
Well:	Irons Unit 1H	North Reference:	Grid
Wellbore:	Original Wellpath	Survey Calculation Method:	Minimum Curvature
Design:	As Drilled	Database:	Oklahoma District

MD (usft)	Inc (°)	Azi (azimuth) (°)	TVD (usft)	N/S (usft)	E/W (usft)	V. Sec (usft)	DLeg (°/100usft)
16,292.0	89.80	141.85	7,521.4	-7,228.8	5,801.9	9,264.6	2.86
16,388.0	90.27	140.00	7,521.4	-7,303.3	5,862.5	9,360.6	1.99
16,485.0	93.50	144.01	7,518.2	-7,379.7	5,922.1	9,457.5	5.31
16,581.0	91.71	142.89	7,513.8	-7,456.7	5,979.2	9,553.4	2.20
16,677.0	91.44	142.75	7,511.2	-7,533.2	6,037.2	9,649.3	0.32
16,774.0	91.75	141.61	7,508.5	-7,609.8	6,096.7	9,746.3	1.22
16,870.0	91.65	138.81	7,505.6	-7,683.5	6,158.1	9,842.1	2.92
16,966.0	93.63	140.50	7,501.2	-7,756.6	6,220.2	9,937.8	2.71
17,061.0	92.82	143.16	7,495.9	-7,831.2	6,278.8	10,032.6	2.92
17,157.0	92.89	143.18	7,491.1	-7,907.9	6,336.2	10,128.5	0.08
17,254.0	93.16	141.88	7,486.0	-7,984.8	6,395.2	10,225.4	1.37
17,349.0	92.86	142.99	7,481.0	-8,060.0	6,453.0	10,320.2	1.21
17,445.0	92.92	143.30	7,476.1	-8,136.7	6,510.5	10,416.1	0.33
17,578.0	93.39	144.29	7,468.8	-8,243.9	6,588.9	10,548.9	0.82
17,634.0	93.39	144.29	7,465.5	-8,289.2	6,621.6	10,604.8	0.00

Measured Depth (usft)	Vertical Depth (usft)	Local Coordinates		Comment
		+N/-S (usft)	+E/-W (usft)	
7,419.0	7,325.5	-207.6	480.0	Burkett
7,462.0	7,357.2	-225.5	502.8	Tully
7,702.0	7,481.0	-365.6	650.0	Marcellus

Checked By: _____ Approved By: _____ Date: _____

Received
Office of Oil & Gas
MAY 18 2015