

Handwritten initials in blue ink.

State of West Virginia
Department of Environmental Protection - Office of Oil and Gas
Well Operator's Report of Well Work

Received
Office of Oil & Gas
MAY 18 2015

API 47-017-06224 County Doddridge District West Union
Quad West Union 7.5' Pad Name Bee Lewis Pad Field/Pool Name ----
Farm name Bee, Lewis P. Well Number Livingston Unit 2H
Operator (as registered with the OOG) Antero Resources Corporation
Address 1615 Wynkoop St. City Denver State CO Zip 80202

As Drilled location NAD 83/UTM Attach an as-drilled plat, profile view, and deviation survey
Top hole Northing 4345084m Easting 515285m
Landing Point of Curve Northing 4346171.31m Easting 514830.65m
Bottom Hole Northing 4348006m Easting 513962m

Elevation (ft) 1003' GL Type of Well New Existing Type of Report Interim Final
Permit Type Deviated Horizontal Horizontal 6A Vertical Depth Type Deep Shallow
Type of Operation Convert Deepen Drill Plug Back Redrilling Rework Stimulate
Well Type Brine Disposal CBM Gas Oil Secondary Recovery Solution Mining Storage Other _____
Type of Completion Single Multiple Fluids Produced Brine Gas NGL Oil Other _____
Drilled with Cable Rotary

Drilling Media Surface hole Air Mud Fresh Water Intermediate hole Air Mud Fresh Water Brine
Production hole Air Mud Fresh Water Brine
Mud Type(s) and Additive(s)
Air- Foam & 4% KCL
Mud- Polymer

Date permit issued 5/28/2013 Date drilling commenced 9/2/2013 Date drilling ceased 11/20/2013
Date completion activities began 3/6/2014 Date completion activities ceased 6/23/2014
Verbal plugging (Y/N) N/A Date permission granted N/A Granted by N/A

Please note: Operator is required to submit a plugging application within 5 days of verbal permission to plug

Freshwater depth(s) ft 56', 136' Open mine(s) (Y/N) depths No
Salt water depth(s) ft 466', 996' Void(s) encountered (Y/N) depths No
Coal depth(s) ft 101', 590' Cavern(s) encountered (Y/N) depths No
Is coal being mined in area (Y/N) No

Reviewed by:
A.L. 5/26/15
W.S. 6/02/15
06/05/2015

MAY 18 2015

WR-35
Rev. 8/23/13

API 47-017 - 06224

Farm name Bee, Lewis P.

Well number Livingston Unit 2H

CASING STRINGS	Hole Size	Casing Size	Depth	New or Used	Grade wt/ft	Basket Depth(s)	Did cement circulate (Y/N) * Provide details below*
Conductor	24"	20"	59'	New	94# J-55	N/A	Y
Surface	17- 1/2"	13- 3/8"	358'	New	48# J-55	N/A	Y
Coal							
Intermediate 1	12-1/4"	9-5/8"	2615'	New	36# J-55	N/A	Y
Intermediate 2							
Intermediate 3							
Production	8-3/4" & 8-1/2"	5-1/2"	16613'	New	20# P-110	N/A	Y
Tubing		2-3/8"	6665'		4.7# N-80	N/A	
Packer type and depth set		N/A					

Comment Details _____

CEMENT DATA	Class/Type of Cement	Number of Sacks	Slurry wt (ppg)	Yield (ft ³ /sks)	Volume (ft ³)	Cement Top (MD)	WOC (hrs)
Conductor	Class A	120 sx	15.6	1.18	57	0'	8 Hrs.
Surface	Class H	450 sx	15.6	1.18	249	0'	8 Hrs.
Coal							
Intermediate 1	Class A	963 sx	15.6	1.18	819	0'	8 Hrs.
Intermediate 2							
Intermediate 3							
Production	Class H	724 sx (Lead) 1141 sx (Tail)	14.5 Lead 15.2 Tail	1.3 Lead 1.86 Tail	3321	-500' into intermediate casing	8 Hrs.
Tubing							

Drillers TD (ft) 16668' MD, 6580' TVD (BHL); 6667' TVD (Deepest Point Drilled) Loggers TD (ft) 16563'
 Deepest formation penetrated Marcellus Plug back to (ft) N/A
 Plug back procedure N/A

Kick off depth (ft) 6382'

Check all wireline logs run caliper density deviated/directional induction
 neutron resistivity gamma ray temperature sonic

Well cored Yes No Conventional Sidewall Were cuttings collected Yes No

DESCRIBE THE CENTRALIZER PLACEMENT USED FOR EACH CASING STRING _____
 Conductor- 0
 Surface- 1 above guide shoe, 1 above insert float, 1 every 4th joint to surface
 Intermediate- 1 above float joint, 1 above float collar, 1 every 4th joint to surface
 Production- 1 above float joint, 1 below float collar, 1 every 3rd joint to top of cement

WAS WELL COMPLETED AS SHOT HOLE Yes No DETAILS _____

WAS WELL COMPLETED OPEN HOLE? Yes No DETAILS _____

WERE TRACERS USED Yes No TYPE OF TRACER(S) USED _____

API 47-017-06224 Farm Name Bee, Lewis P. Well Number Livingston Unit 2H

EXHIBIT 1

Stage No.	Perforation Date	Perforated from MD ft.	Perforated to MD ft.	Number of Perforations	Formations
1	6-Mar-14	16,358	16,525	60	Marcellus
2	12-Apr-14	16,160	16,327	60	Marcellus
3	12-Apr-14	15,961	16,129	60	Marcellus
4	12-Apr-14	15,763	15,930	60	Marcellus
5	13-Apr-14	15,565	15,732	60	Marcellus
6	13-Apr-14	15,367	15,534	60	Marcellus
7	14-Apr-14	15,169	15,336	60	Marcellus
8	14-Apr-14	14,971	15,138	60	Marcellus
9	15-Apr-14	14,773	14,940	60	Marcellus
10	15-Apr-14	14,574	14,742	60	Marcellus
11	15-Apr-14	14,376	14,543	60	Marcellus
12	16-Apr-14	14,178	14,345	60	Marcellus
13	16-Apr-14	13,980	14,147	60	Marcellus
14	1-May-14	13,782	13,949	60	Marcellus
15	2-May-14	13,584	13,751	60	Marcellus
16	2-May-14	13,386	13,553	60	Marcellus
17	2-May-14	13,187	13,355	60	Marcellus
18	2-May-14	12,989	13,156	60	Marcellus
19	2-May-14	12,791	12,958	60	Marcellus
20	3-May-14	12,593	12,760	60	Marcellus
21	3-May-14	12,395	12,562	60	Marcellus
22	3-May-14	12,197	12,364	60	Marcellus
23	3-May-14	11,999	12,166	60	Marcellus
24	4-May-14	11,801	11,968	60	Marcellus
25	4-May-14	11,602	11,769	60	Marcellus
26	5-May-14	11,404	11,571	60	Marcellus
27	5-May-14	11,206	11,373	60	Marcellus
28	5-May-14	11,008	11,175	60	Marcellus
29	5-May-14	10,810	10,977	60	Marcellus
30	6-May-14	10,312	10,485	60	Marcellus
31	6-May-14	10,107	10,280	60	Marcellus
32	6-May-14	9,903	10,075	60	Marcellus
33	6-May-14	9,698	9,870	60	Marcellus
34	7-May-14	9,493	9,666	60	Marcellus
35	7-May-14	9,288	9,461	60	Marcellus
36	7-May-14	9,083	9,256	60	Marcellus
37	7-May-14	8,878	9,051	60	Marcellus
38	8-May-14	8,674	8,846	60	Marcellus
39	8-May-14	8,469	8,641	60	Marcellus
40	8-May-14	8,264	8,437	60	Marcellus
41	8-May-14	8,059	8,232	60	Marcellus
42	9-May-14	7,854	8,027	60	Marcellus
43	9-May-14	7,649	7,822	60	Marcellus
44	9-May-14	7,445	7,617	60	Marcellus
45	9-May-14	7,240	7,412	60	Marcellus

Received
 Office of Oil & Gas
 MAY 18 2015

EXHIBIT 2

Stage No.	Stimulations Date	Avg Pump Rate	Avg Treatment Pressure (PSI)	Max Breakdown Pressure (PSI)	ISIP (PSI)	Amount of Proppant (lbs)	Amount of Water (bbbs)	Amount of Nitrogen/ other (units)
1	12-Apr-14	74.0	7,471	6,332	5,109	241,200	6,420	N/A
2	12-Apr-14	77.2	7,533	6,284	5,302	236,900	6,349	N/A
3	12-Apr-14	77.2	7,189	5,673	4,743	235,300	6,460	N/A
4	13-Apr-14	76.5	7,950	5,494	5,230	234,900	6,865	N/A
5	13-Apr-14	74.4	7,713	5,405	5,653	238,100	6,464	N/A
6	14-Apr-14	65.5	7,424	5,382	5,096	30,300	6,347	N/A
7	14-Apr-14	76.9	7,854	5,697	5,504	239,300	6,284	N/A
8	15-Apr-14	77.3	7,664	5,510	4,598	221,300	6,069	N/A
9	15-Apr-14	77.4	7,490	5,149	5,302	188,400	6,660	N/A
10	15-Apr-14	77.8	7,661	5,420	5,465	238,500	6,247	N/A
11	16-Apr-14	66.8	8,214	5,890	5,260	140,900	6,770	N/A
12	16-Apr-14	74.5	7,457	5,376	4,571	202,500	6,280	N/A
13	16-Apr-14	72.5	7,508	5,574	4,656	125,000	6,622	N/A
14	1-May-14	76.5	7,127	5,310	5,262	240,700	6,237	N/A
15	2-May-14	66.3	7,537	5,233	5,260	123,300	6,705	N/A
16	2-May-14	73.5	6,880	5,510	5,716	118,300	6,666	N/A
17	2-May-14	77.9	7,348	5,398	5,480	214,400	6,300	N/A
18	2-May-14	77.2	7,138	5,581	5,081	241,700	6,235	N/A
19	2-May-14	77.3	7,635	5,603	4,214	214,400	6,685	N/A
20	3-May-14	78.0	7,603	5,830	4,315	229,800	6,270	N/A
21	3-May-14	76.7	7,467	5,457	4,911	223,000	6,010	N/A
22	3-May-14	62.4	7,763	5,242	4,124	186,400	6,657	N/A
23	3-May-14	73.9	7,615	5,457	4,538	238,000	5,686	N/A
24	4-May-14	68.5	7,863	5,489	4,248	137,600	6,632	N/A
25	4-May-14	73.1	7,355	6,037	4,755	199,100	4,940	N/A
26	5-May-14	70.1	7,086	5,502	4,567	200,900	6,310	N/A
27	5-May-14	74.4	6,949	5,285	5,082	234,900	6,186	N/A
28	5-May-14	76.7	6,655	5,227	5,113	252,200	6,049	N/A
29	5-May-14	77.8	6,784	5,023	5,059	237,700	5,981	N/A
30	6-May-14	77.2	6,809	5,366	4,506	240,600	6,022	N/A
31	6-May-14	77.6	6,705	5,489	5,000	241,100	6,055	N/A
32	6-May-14	74.1	7,092	5,271	4,815	159,500	6,373	N/A
33	6-May-14	70.3	6,558	5,037	4,956	253,200	5,917	N/A
34	7-May-14	77.4	6,682	5,310	5,134	239,500	5,891	N/A
35	7-May-14	77.8	6,864	5,570	5,054	232,800	5,906	N/A
36	7-May-14	77.2	6,661	5,407	5,037	240,400	6,048	N/A
37	7-May-14	78.9	6,858	5,398	4,126	215,300	5,802	N/A
38	8-May-14	77.9	7,051	6,250	4,888	183,800	6,404	N/A
39	8-May-14	75.5	6,865	5,502	5,067	196,900	6,326	N/A
40	8-May-14	76.8	6,534	5,163	5,234	240,300	5,868	N/A
41	8-May-14	77.1	6,933	5,691	4,486	179,600	5,329	N/A
42	9-May-14	74.6	6,949	5,813	4,813	161,700	5,828	N/A
43	9-May-14	73.6	6,549	6,059	4,449	240,200	5,867	N/A
44	9-May-14	76.9	6,782	6,548	5,095	239,800	5,874	N/A
45	9-May-14	79.2	6,401	5,962	3,502	241,000	5,789	N/A
AVG=		75	7,205	5,560	4,897	9,370,700	278,685	TOTAL

Received
 Office of Oil & Gas

MAY 18 2015

EXHIBIT 3

LITHOLOGY/ FORMATION	TOP DEPTH (TVD)	BOTTOM DEPTH (TVD)	TOP DEPTH (MD)	BOTTOM DEPTH (MD)
	From Surface	From Surface	From Surface	From Surface
Fresh Water	56'	N/A	56'	N/A
Fresh Water	136'	N/A	136'	N/A
Shale	0	101	0	101
Coal	est. 101	141	est. 101	141
Shale	est. 141	301	est. 141	301
Sandstone	est. 301	341	est. 301	341
Shale/Sandstone/Siltstone	est. 341	590	est. 341	590
Coal	est. 590	611	est. 590	611
Shale/Siltstone	est. 611	1486	est. 611	1486
Siltstone w/Coal	est. 1486	1541	est. 1486	1541
Siltstone/Sandstone	est. 1541	1875	est. 1541	1876
Big Lime	1875	1989	1876	1991
Big Injun	1989	2447	1991	2449
Gantz Sand	2447	2543	2449	2545
Fifty Foot Sandstone	2543	2626	2545	2628
Gordon	2626	2940	2628	2942
Fifth Sandstone	2940	2970	2942	2972
Bayard	2970	3349	2972	3351
Warren	3349	3684	3351	3686
Speechley	3684	4009	3686	4011
Baltown	4009	4460	4011	4462
Bradford	4460	4889	4462	4891
Benson	4889	5170	4891	5172
Alexander	5170	5331	5172	5335
Elk	5331	5743	5335	5763
Rhinestreet	5743	6150	5763	6211
Sycamore	6150	6321	6211	6409
Middlesex	6321	6453	6409	6621
Burkett	6453	6483	6621	6688
Tully	6483	6536	6688	7201
Marcellus	6536	NA	7201	NA
Onondaga**	6642	NA	10486	NA

*Please note Antero determines shallow formation tops based on mud and/or wireline logs that are only run on one well on a multi-well pad (Please reference Wireline Logs submitted for the Squirrel Unit 1H API# 47-017-06258)). The measured depth (MD) data on subsequent wells may be slightly different due to the well's unique departure.

**Antero drilled a small portion of this well into the Onondaga formation from approximately 10505'-10790' in the lateral but this section was not perforated or completed.

Received
Office of Oil & Gas
MAY 18 2015

Hydraulic Fracturing Fluid Product Component Information Disclosure

Job Start Date:	4/12/2014
Job End Date:	5/9/2014
State:	West Virginia
County:	Doddridge
API Number:	47-017-06224-00-00
Operator Name:	Antero Resources Corporation
Well Name and Number:	Livingston Unit 2H ST
Longitude:	-80.82301700
Latitude:	39.25486700
Datum:	NAD27
Federal/Tribal Well:	NO
True Vertical Depth:	6,623
Total Base Water Volume (gal):	11,704,770
Total Base Non Water Volume:	0



Received
Office of Oil & Gas

MAY 18 2015

Hydraulic Fracturing Fluid Composition:

Trade Name	Supplier	Purpose	Ingredients	Chemical Abstract Service Number (CAS #)	Maximum Ingredient Concentration in Additive (% by mass)**	Maximum Ingredient Concentration in HF Fluid (% by mass)**	Comments
Water	ANTERO RESOURCES	Water		7732-18-5	100.00000	91.05112	
Sand	Nabors Completion and Production Services	Sand - Bulk - West Virginia	Crystalline Silica, quartz	14808-60-7	99.90000	5.50572	
			Aluminum Oxide	1344-28-1	1.10000	0.06062	
			Iron Oxide	1309-37-1	0.10000	0.00551	
			Titanium Oxide	13463-67-7	0.10000	0.00551	
Sand	Nabors Completion and Production Services	Sand - Bulk - West Virginia					
			Crystalline Silica, quartz	14808-60-7	99.90000	2.60615	
			Aluminum Oxide	1344-28-1	1.10000	0.02870	
			Iron Oxide	1309-37-1	0.10000	0.00261	
			Titanium Oxide	13463-67-7	0.10000	0.00261	
Sand	Nabors Completion and Production Services	Sand - Bulk - West Virginia					
			Crystalline Silica, quartz	14808-60-7	99.90000	0.61974	
			Aluminum Oxide	1344-28-1	1.10000	0.00682	

				Titanium Oxide	13463-67-7	0.10000	0.00062	
LSG-100L	Nabors Completion and Production Services	Gelling Agents	Iron Oxide	1309-37-1	0.10000	0.00062		
WFR-3B	Nabors Completion and Production Services	Friction Reducer	Petroleum Distillates	64742-47-8	70.00000	0.04617		
			Hydrotreated light distillates, non-aromatic, BTEX free	64742-47-8	30.00000	0.02089		
			Ethoxylated alcohols	68002-97-1	15.00000	0.01044		
			Ethoxylated oleylamine	26635-93-8	5.00000	0.00348		
HCl Acid (12.5-18.0%) 22 Baume	Nabors Completion and Production Services	Bulk Acid						
Super GREEN SOLV-M	Nabors Completion and Production Services	Paraffin & Scale Additives	Water	7732-18-5	100.00000	0.01427		
			Aliphatic Hydrocarbons	Proprietary	95.00000	0.00699		
			Dodecane	Proprietary	14.00000	0.00103		
			Tetradecane	Proprietary	11.00000	0.00081		
			Tridecane	Proprietary	9.00000	0.00066		
			Undecane	Proprietary	8.00000	0.00059		
KR-153SL	Nabors Completion and Production Services	Biocides						
			Polyethylene-Glycol	25322-68-3	50.00000	0.00642		
			2,2-dibromo-3-nitropropionamide	10222-01-2	20.00000	0.00257		
Super TSC-LT	Nabors Completion and Production Services	Paraffin & Scale Additives						
			Water	7732-18-5	60.00000	0.00868		
OB-2 LT	Nabors Completion and Production Services	Gel Breakers						
			Ammonium Persulfate	7727-54-0	85.00000	0.00726		
			Crystalline Silica (in the form of quartz)	14808-60-7	10.00000	0.00085		
HCl Acid (12.5-18.0%) 22 Baume	Nabors Completion and Production Services	Bulk Acid						
			Hydrochloric Acid	7647-01-0	35.50000	0.00415		
Acid Inhibitor 2 (AI-2)	Nabors Completion and Production Services	Acid Corrosion Inhibitors						
			Propargyl Alcohol	107-19-7	40.00000	0.00016		
			Glycol Ethers	111-46-6	40.00000	0.00016		
			Isopropyl Alcohol	67-63-0	40.00000	0.00016		
			Ethoxylated Nonylphenol	68412-54-4	13.00000	0.00005		

Received
Office of Oil & Gas
MAY 16 2015

Super TSC 2 LT	Nabors Completion and Production Services	Paraffin & Scale Additives	72480-70-7	10.00000	0.00004
EB-4L	Nabors Completion and Production Services	Gel Breakers	35657-77-3	15.00000	0.00044
		Ethylene Glycol	107-21-1	40.00000	0.00019
Ingredients shown above are subject to 29 CFR 1910.1200(i) and appear on Material Safety Data Sheets (MSDS). Ingredients shown below are Non-MSDS.					
Other Ingredients	Nabors Completion and Production Services	Other Ingredients			
		guar gum	9000-30-0	50.00000	0.03298
		Water	7732-18-5	40.00000	0.02785
		Anionic Polyacrylamide	910644-97-2	40.00000	0.02785
		Propylene glycol	57-55-6	15.00000	0.01044
		Water	7732-18-5	80.00000	0.01028
		Water	7732-18-5	64.50000	0.00753
		Proprietary	Proprietary	50.00000	0.00723
		Water	7732-18-5	90.00000	0.00265
		Proprietary	Proprietary	15.00000	0.00217
		Proprietary	Proprietary	15.00000	0.00217
		Proprietary	Proprietary	15.00000	0.00217
		Proprietary	Proprietary	2.00000	0.00139
		Surfactant	68439-51-0	2.00000	0.00132
		Crystalline Silica (in the form of quartz)	14808-60-7	2.00000	0.00132
		Alkali Chloride salt	Proprietary	15.00000	0.00128
		Proprietary	Proprietary	100.00000	0.00048
		Sugar	57-50-1	100.00000	0.00048
		Water	7732-18-5	100.00000	0.00024
		Water	7732-18-5	48.00000	0.00019
		2-Butoxyethanol	111-76-2	13.00000	0.00005
		Proprietary	Proprietary	1.00000	0.00001
		Proprietary	Proprietary	1.00000	0.00001
		Proprietary	Proprietary	1.00000	0.00001
		Proprietary	Proprietary	1.00000	0.00001
		Dioxane	123-91-1	1.00000	0.00000
		Organophylic Clay	68953-58-2	1.00000	0.00000

* Total Water Volume sources may include fresh water, produced water, and/or recycled water

** Information is based on the maximum potential for concentration and thus the total may be over 100%

Note: For Field Development Products (products that begin with FDP), MSDS level only information has been provided. Ingredient information for chemicals subject to 29 CFR 1910.1200(i) and Appendix D are obtained from suppliers Material Safety Data Sheets (MSDS)

Received
Office of Oil & Gas
MAY 18 2015

06/05/2015

LATITUDE 39°17'30"

8,878'

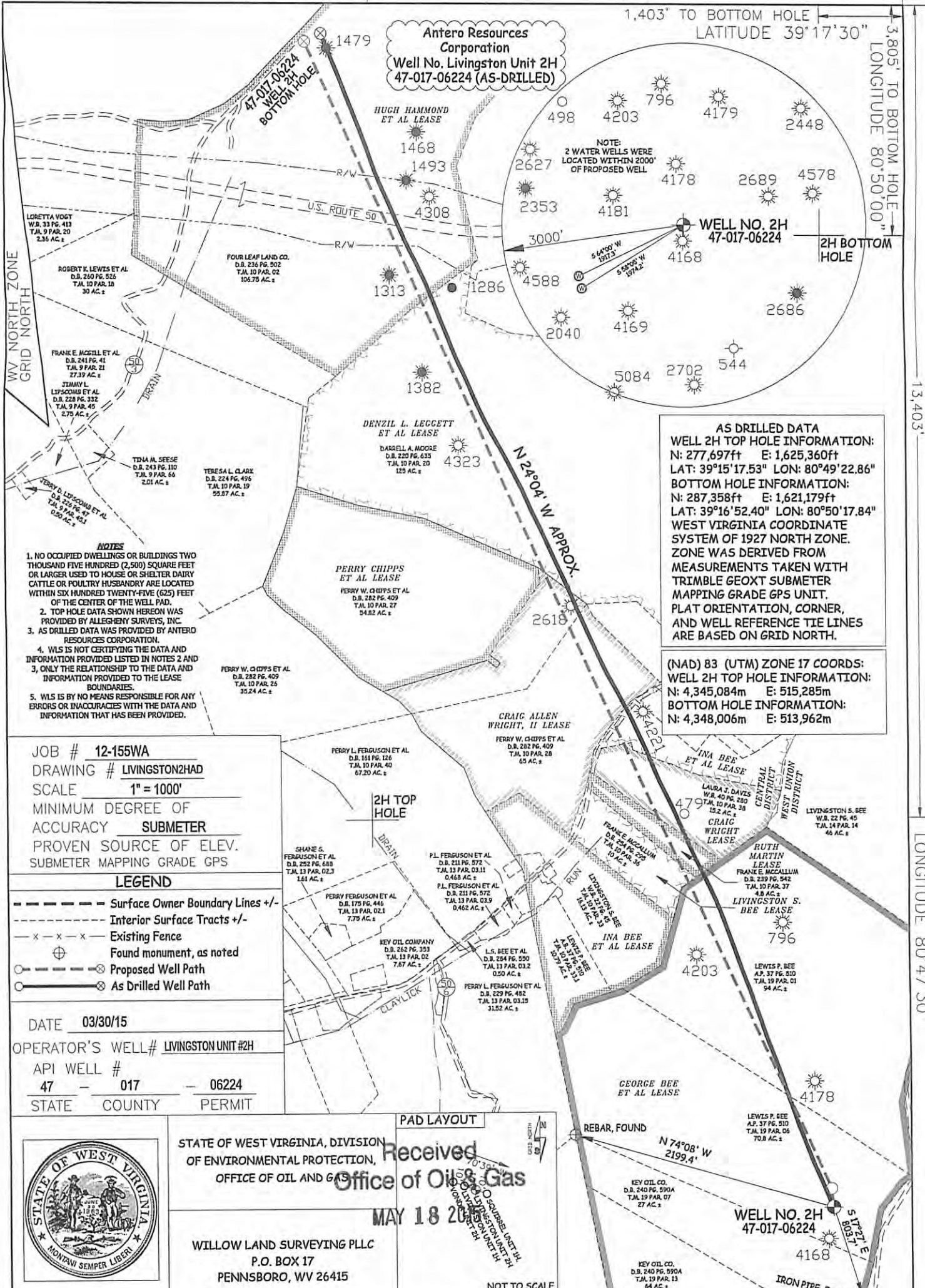
1,403' TO BOTTOM HOLE
LATITUDE 39°17'30"

3,805' TO BOTTOM HOLE
LONGITUDE 80°50'00"

13,403'

LONGITUDE 80°47'30"

Antero Resources Corporation
Well No. Livingston Unit 2H
47-017-06224 (AS-DRILLED)



AS DRILLED DATA
WELL 2H TOP HOLE INFORMATION:
N: 277,697ft E: 1,625,360ft
LAT: 39°15'17.53" LON: 80°49'22.86"
BOTTOM HOLE INFORMATION:
N: 287,358ft E: 1,621,179ft
LAT: 39°16'52.40" LON: 80°50'17.84"
WEST VIRGINIA COORDINATE SYSTEM OF 1927 NORTH ZONE. ZONE WAS DERIVED FROM MEASUREMENTS TAKEN WITH TRIMBLE GEOXT SUBMETER MAPPING GRADE GPS UNIT. PLAT ORIENTATION, CORNER, AND WELL REFERENCE TIE LINES ARE BASED ON GRID NORTH.

(NAD) 83 (UTM) ZONE 17 COORDS:
WELL 2H TOP HOLE INFORMATION:
N: 4,345,084m E: 515,285m
BOTTOM HOLE INFORMATION:
N: 4,348,006m E: 513,962m

- NOTES**
1. NO OCCUPIED DWELLINGS OR BUILDINGS TWO THOUSAND FIVE HUNDRED (2,500) SQUARE FEET OR LARGER USED TO HOUSE OR SHELTER DAIRY CATTLE OR POULTRY HUSBANDRY ARE LOCATED WITHIN SIX HUNDRED TWENTY-FIVE (625) FEET OF THE CENTER OF THE WELL PAD.
 2. TOP HOLE DATA SHOWN HEREON WAS PROVIDED BY ALLEGHENY SURVEYS, INC
 3. AS DRILLED DATA WAS PROVIDED BY ANTERO RESOURCES CORPORATION.
 4. WLS IS NOT CERTIFYING THE DATA AND INFORMATION PROVIDED LISTED IN NOTES 2 AND 3, ONLY THE RELATIONSHIP TO THE DATA AND INFORMATION PROVIDED TO THE LEASE BOUNDARIES.
 5. WLS IS BY NO MEANS RESPONSIBLE FOR ANY ERRORS OR INACCURACIES WITH THE DATA AND INFORMATION THAT HAS BEEN PROVIDED.

JOB # 12-155WA
DRAWING # LIVINGSTON2HAD
SCALE 1" = 1000'
MINIMUM DEGREE OF ACCURACY SUBMETER
PROVEN SOURCE OF ELEV. SUBMETER MAPPING GRADE GPS

- LEGEND**
- Surface Owner Boundary Lines +/-
 - - - Interior Surface Tracts +/-
 - x - x - Existing Fence
 - ⊕ Found monument, as noted
 - ⊙ Proposed Well Path
 - ⊗ As Drilled Well Path

DATE 03/30/15
OPERATOR'S WELL# LIVINGSTON UNIT #2H
API WELL # 47 - 017 - 06224
STATE COUNTY PERMIT



STATE OF WEST VIRGINIA, DIVISION OF ENVIRONMENTAL PROTECTION, OFFICE OF OIL AND GAS
WILLOW LAND SURVEYING PLLC
P.O. BOX 17
PENNSBORO, WV 26415

Received
Office of Oil & Gas
MAY 18 2015
NOT TO SCALE

STATE OF WEST VIRGINIA DEPT. OF ENERGY DIVISION OF OIL AND GAS
WELL TYPE: OIL GAS LIQUID INJECTION WASTE DISPOSAL
(IF "GAS") PRODUCTION STORAGE DEEP SHALLOW
LOCATION: ELEVATION 1,011' ORIGINAL - 1,003' AS DRILLED WATERSHED HEADWATERS MIDDLE ISLAND CREEK
QUADRANGLE WEST UNION 7.5' DISTRICT WEST UNION COUNTY DODD
SURFACE OWNER LEWIS P. BEE ACREAGE 70.8 ACRES +/-
OIL & GAS ROYALTY OWNER GEORGE BEE ET AL; RUTH MARTIN; CRAIG WRIGHT; INA BEE ET AL; CRAIG ALLEN WRIGHT, II; DENZIL L. LEGGETT ET AL; HUGH HAMMOND ET AL LEASE ACREAGE 356.5 AC±; 4.676 AC±; 15 AC±; 27 AC±; 30.09 ±; 140 AC±; 146 AC±
PROPOSED WORK: DRILL CONVERT DRILL DEEPER REDRILL FRACTURE OR STIMULATE
PLUG OFF OLD FORMATION PERFORATE NEW FORMATION OTHER PHYSICAL CHANGE IN WELL (SPECIFY) AS DRILLED PLUG & ABANDON CLEAN OUT & REPLUG
TARGET FORMATION MARCELLUS ESTIMATED DEPTH 6,581' TVD 16,613' MD
WELL OPERATOR ANTERO RESOURCES CORP. DESIGNATED AGENT DIANNA STAMPER
ADDRESS 1615 WYNKOOP STREET ADDRESS CT CORPORATION SYSTEM
DENVER, CO 80202 ADDRESS 5400 D BIG TYLER ROAD
CHARLESTON, WV 25313

0805/2015