

2,914' to Bottom Hole

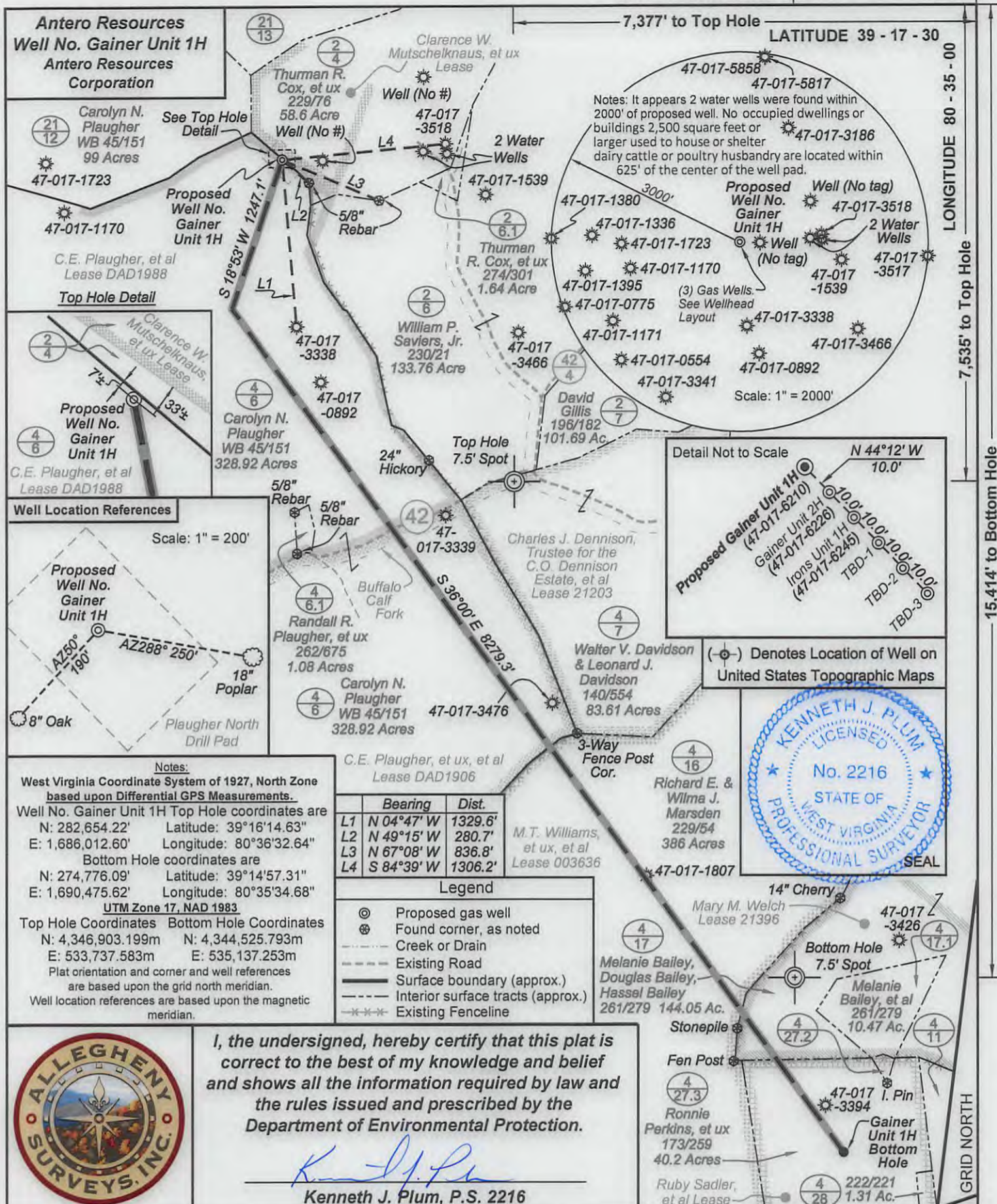
7,377' to Top Hole

LATITUDE 39 - 17 - 30

LONGITUDE 80 - 35 - 00

7,535' to Top Hole

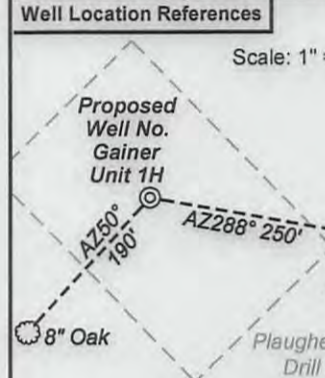
15,414' to Bottom Hole



Antero Resources
Well No. Gainer Unit 1H
Antero Resources Corporation

Carolyn N. Plaucher WB 45/151 99 Acres
47-017-1723
47-017-1170
C.E. Plaucher, et al Lease DAD1988
Top Hole Detail

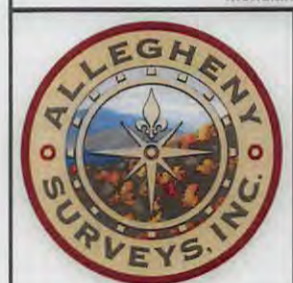
Clarence W. Mutschelknaus, et ux Lease
Proposed Well No. Gainer Unit 1H
C.E. Plaucher, et al Lease DAD1988



Notes:
West Virginia Coordinate System of 1927, North Zone based upon Differential GPS Measurements.
Well No. Gainer Unit 1H Top Hole coordinates are
N: 282,654.22' Latitude: 39°16'14.63"
E: 1,686,012.60' Longitude: 80°36'32.64"
Bottom Hole coordinates are
N: 274,776.09' Latitude: 39°14'57.31"
E: 1,690,475.62' Longitude: 80°35'34.68"
UTM Zone 17, NAD 1983
Top Hole Coordinates Bottom Hole Coordinates
N: 4,346,903.199m N: 4,344,525.793m
E: 533,737.583m E: 535,137.253m
Plat orientation and corner and well references are based upon the grid north meridian.
Well location references are based upon the magnetic meridian.

	Bearing	Dist.
L1	N 04°47' W	1329.6'
L2	N 49°15' W	280.7'
L3	N 67°08' W	836.8'
L4	S 84°39' W	1306.2'

- Legend**
- ⊙ Proposed gas well
 - ⊗ Found corner, as noted
 - Creek or Drain
 - Existing Road
 - Surface boundary (approx.)
 - Interior surface tracts (approx.)
 - Existing Fenceline



I, the undersigned, hereby certify that this plat is correct to the best of my knowledge and belief and shows all the information required by law and the rules issued and prescribed by the Department of Environmental Protection.

Kenneth J. Plum
Kenneth J. Plum, P.S. 2216

FILE NO: 42-30-G-13
DRAWING NO: 42-13 Gainer 1H Well Plat
SCALE: 1" = 1000'
MINIMUM DEGREE OF ACCURACY: Submeter
PROVEN SOURCE OF ELEVATION: WVDOT, Bridgeport, WV

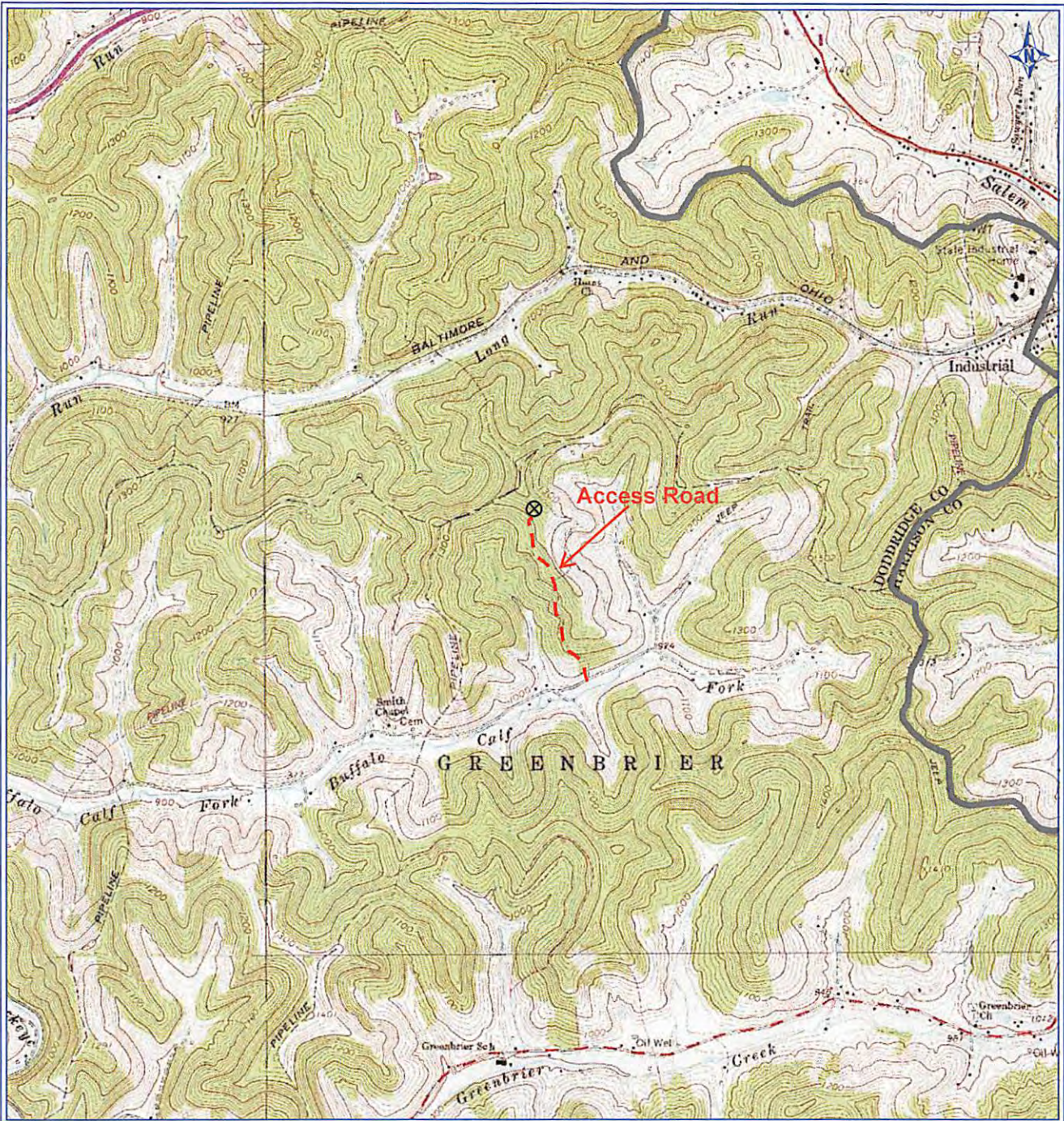
STATE OF WEST VIRGINIA
DEPARTMENT OF ENVIRONMENTAL PROTECTION
OIL AND GAS DIVISION

DATE: September 5 2013
OPERATOR'S WELL NO. Gainer Unit 1H
API WELL NO. MOD
47 - 017 - 06210H 6A
STATE COUNTY PERMIT

WELL TYPE: OIL GAS LIQUID INJECTION WASTE DISPOSAL
(IF GAS) PRODUCTION: STORAGE DEEP SHALLOW
LOCATION: ELEVATION: 1364' WATERSHED: Buffalo Calf Fork QUADRANGLE: Salem
DISTRICT: Greenbrier COUNTY: Doddridge
SURFACE OWNER: Carolyn N. Plaucher Ruby Sadler, et al ACREAGE: 328.92 51; 90
ROYALTY OWNER: C.E. Plaucher, et al; C.E. Plaucher, et ux, et al; Mary M. Welch LEASE NO: DAD1988; DAD1906 ACREAGE: 165; 165; 376.78
PROPOSED WORK: DRILL CONVERT DRILL DEEPER FRACTURE OR STIMULATE PLUG OFF OLD FORMATION
 PERFORATE NEW FORMATION OTHER PHYSICAL CHANGE IN WELL (SPECIFY) Modification - BHL
 PLUG AND ABANDON CLEAN OUT AND REPLUG TARGET FORMATION: Marcellus Shale ESTIMATED DEPTH: 7,600' TVD 16,300' MD

WELL OPERATOR: Antero Resources Corporation DESIGNATED AGENT: Dianna Stamper - CT Corporation System
ADDRESS: 1625 17th Street ADDRESS: 5400 D Big Tyler Road
Denver, CO 80202 Charleston, WV 25313

12/06/2013



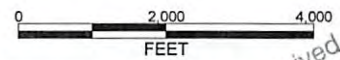
PETRA 2/11/2013 3:39:31 PM

Antero Resources Corporation

Appalachian Basin

Gainer Unit 1H

Doddridge County



REMARKS
 QUADRANGLE: SALEM
 WATERSHED: BUFFALO CALF FORK
 DISTRICT: GREENBRIER

February 11, 2013

Received
 Office of Oil & Gas
 FEB 20 2013