



---

west virginia department of environmental protection

---

Office of Oil and Gas  
601 57th Street SE  
Charleston, WV 25304  
(304) 926-0450  
(304) 926-0452 fax

Earl Ray Tomblin, Governor  
Randy C. Huffman, Cabinet Secretary  
[www.dep.wv.gov](http://www.dep.wv.gov)

## PERMIT MODIFICATION APPROVAL

December 11, 2013

ANTERO RESOURCES APPALACHIAN CORPORATION  
1625 17TH STREET, SUITE 300  
DENVER, CO 80202

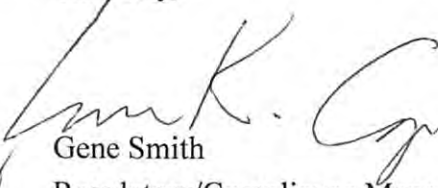
Re: Permit Modification Approval for API Number 1706201 , Well #: SHALE UNIT 1H  
**Extended Lateral**

Oil and Gas Operator:

The Office of Oil and Gas has reviewed the attached permit modification for the above referenced permit. The attached modification has been approved and well work may begin. Please be reminded that the oil and gas inspector is to be notified twenty-four (24) hours before permitted well work is commenced.

Please call James Martin at 304-926-0499, extension 1654 if you have any questions.

Sincerely,

*for*   
Gene Smith  
Regulatory/Compliance Manager  
Office of Oil and Gas



Antero Resources  
1625 17th Street  
Denver, Colorado 80202  
Office 303.357.7310  
Fax 303.357.7315

December 9, 2013

West Virginia Department of Environmental Protection  
Office of Oil and Gas  
Attn: Ms. Laura Cooper  
601 57<sup>th</sup> Street  
Charleston, WV 25304

Ms. Laura Cooper:

Antero Resources Corporation (Antero) would like to submit the following permit modification for one approved well on the Jonathan Davis Pad. We are requesting to extend the horizontal lateral which will change the bottom hole location of the Shale Unit 1H (API# 47-017-06201).

Attached you will find the following documents:

- REVISED Form WW-6B, which shows the revised MD and Production Casing/Cement program
- REVISED Mylar Plat, which shows the new bottom hole location
- REVISED Form WW-6A1, which shows the additional leases this well will drill through

If you have any questions please feel free to contact me at (303) 357-7323.

Thank you in advance for your consideration.

Sincerely,

Ashlie Mihalcin  
Permit Representative  
Antero Resources Corporation

Enclosures

RECEIVED  
Office of Oil and Gas

DEC 10 2013

WV Department of  
Environmental Protection

12/13/2013

WW-6B  
(9/13)

STATE OF WEST VIRGINIA  
DEPARTMENT OF ENVIRONMENTAL PROTECTION, OFFICE OF OIL AND GAS  
WELL WORK PERMIT APPLICATION

1) Well Operator: Antero Resources Corporation 494488557 033- Harrison Tenmile Salem  
Operator ID County District Quadrangle

2) Operator's Well Number: Shale Unit 1H Well Pad Name: Jonathan Davis Pad (existing)

3) Farm Name/Surface Owner: Jonathan L. Davis Public Road Access: CR 11

4) Elevation, current ground: 1146' Elevation, proposed post-construction: 1146'

5) Well Type (a) Gas  Oil  Underground Storage   
 Other   
 (b) If Gas Shallow  Deep   
 Horizontal

6) Existing Pad: Yes or No Yes

7) Proposed Target Formation(s), Depth(s), Anticipated Thickness and Associated Pressure(s):  
Marcellus Shale: 6950' TVD, Anticipated Thickness- 60 feet, Associated Pressure- 3,100#

8) Proposed Total Vertical Depth: 6,950' TVD

9) Formation at Total Vertical Depth: Marcellus Shale

10) Proposed Total Measured Depth: 15,800' MD

11) Proposed Horizontal Leg Length: 7667'

12) Approximate Fresh Water Strata Depths: 148', 340'

13) Method to Determine Fresh Water Depths: Offset well records. Depths have been adjusted according to surface elevations.

14) Approximate Saltwater Depths: 675', 1581'

15) Approximate Coal Seam Depths: 824'

16) Approximate Depth to Possible Void (coal mine, karst, other): None anticipated

17) Does Proposed well location contain coal seams directly overlying or adjacent to an active mine? Yes  No

(a) If Yes, provide Mine Info: Name: \_\_\_\_\_  
 Depth: \_\_\_\_\_  
 Seam: \_\_\_\_\_  
 Owner: \_\_\_\_\_

RECEIVED  
Office of Oil and Gas

DEC 10 2013

WW-6B  
(9/13)

18)

**CASING AND TUBING PROGRAM**

TYPE	Size	New or Used	Grade	Weight per ft. (lb/ft)	FOOTAGE: For Drilling	INTERVALS: Left in Well	CEMENT: Fill-up (Cu. Ft.)
Conductor	20"	New	H-40	94#	40'	40'	CTS, 38 Cu. Ft.
Fresh Water	13-3/8"	New	J-55/H-40	54.5#/ 48#	390'	390'	CTS, 542 Cu. Ft.
Coal	9-5/8"	New	J-55	36#	2470'	2470'	CTS, 1006 Cu Ft.
Intermediate							
Production	5-1/2"	New	P-110	20#	15800'	15800'	3938 Cu Ft.
Tubing	2-3/8"	New	N-80	4.7#		6900'	
Liners							

*LKC*  
*12-11-13*

TYPE	Size	Wellbore Diameter	Wall Thickness	Burst Pressure	Cement Type	Cement Yield (cu. ft./k)
Conductor	20"	24"	0.438"	1530	Class A	1.18
Fresh Water	13-3/8"	17-1/2"	0.38"/0.33"	2730/1730	Class A	1.18
Coal	9-5/8"	12-1/4"	0.352"	3520	Class A	1.18
Intermediate						
Production	5-1/2"	8-3/4" & 8-1/2"	0.361"	12630	Lead-H/POZ & Tail - H	H/POZ-1.44 & H-1.8
Tubing	2-3/8"	4.778"	0.19"	11200		
Liners						

**PACKERS**

Kind:	N/A			
Sizes:	N/A			
Depths Set:	N/A			

RECEIVED  
Office of Oil and Gas

DEC 10 2013

WW-6B  
(9/13)

19) Describe proposed well work, including the drilling and plugging back of any pilot hole:

Drill, perforate, fracture a new horizontal shallow well and complete Marcellus Shale.

20) Describe fracturing/stimulating methods in detail, including anticipated max pressure and max rate:

Antero plans to pump Slickwater into the Marcellus Shale formation in order to ready the well for production. The fluid will be comprised of approximately 99 percent water and sand, with less than 1 percent special-purpose additives as shown in the attached "List of Anticipated Additives Used for Fracturing or Stimulating Well."

21) Total Area to be disturbed, including roads, stockpile area, pits, etc., (acres): 24.44 acres existing

22) Area to be disturbed for well pad only, less access road (acres): 7.42 acres existing

23) Describe centralizer placement for each casing string:

Conductor: no centralizers  
 Surface Casing: one centralizer 10' above the float shoe, one on the insert float collar and one every 4th joint spaced up the hole to surface.  
 Intermediate Casing: one centralizer above float joint, one centralizer 5' above float collar and one every 4th collar to surface.  
 Production Casing: one centralizer at shoe joint and one every 3 joints to top of cement in intermediate casing.

24) Describe all cement additives associated with each cement type:

✓ Conductor: no additives, Class A cement.  
 Surface: Class A cement with 2% calcium and 1/4 lb flake, 5 gallons of clay treat  
 Intermediate: Class A cement with 1/4 lb of flake, 5 gallons of clay treat  
 Production: Lead cement- 50/50 Class H/Poz + 1.5% salt + 1% C-45 + 0.5% C-16a + 0.2% C-12 + 0.45% C-20 + 0.05% C-51  
 Production: Tail cement- Class H + 45 PPS Calcium Carbonate + 1.0% FL-160 + 0.2% ACGB-47 + 0.05% ACSA-51 + 0.2% ACR-20

25) Proposed borehole conditioning procedures:

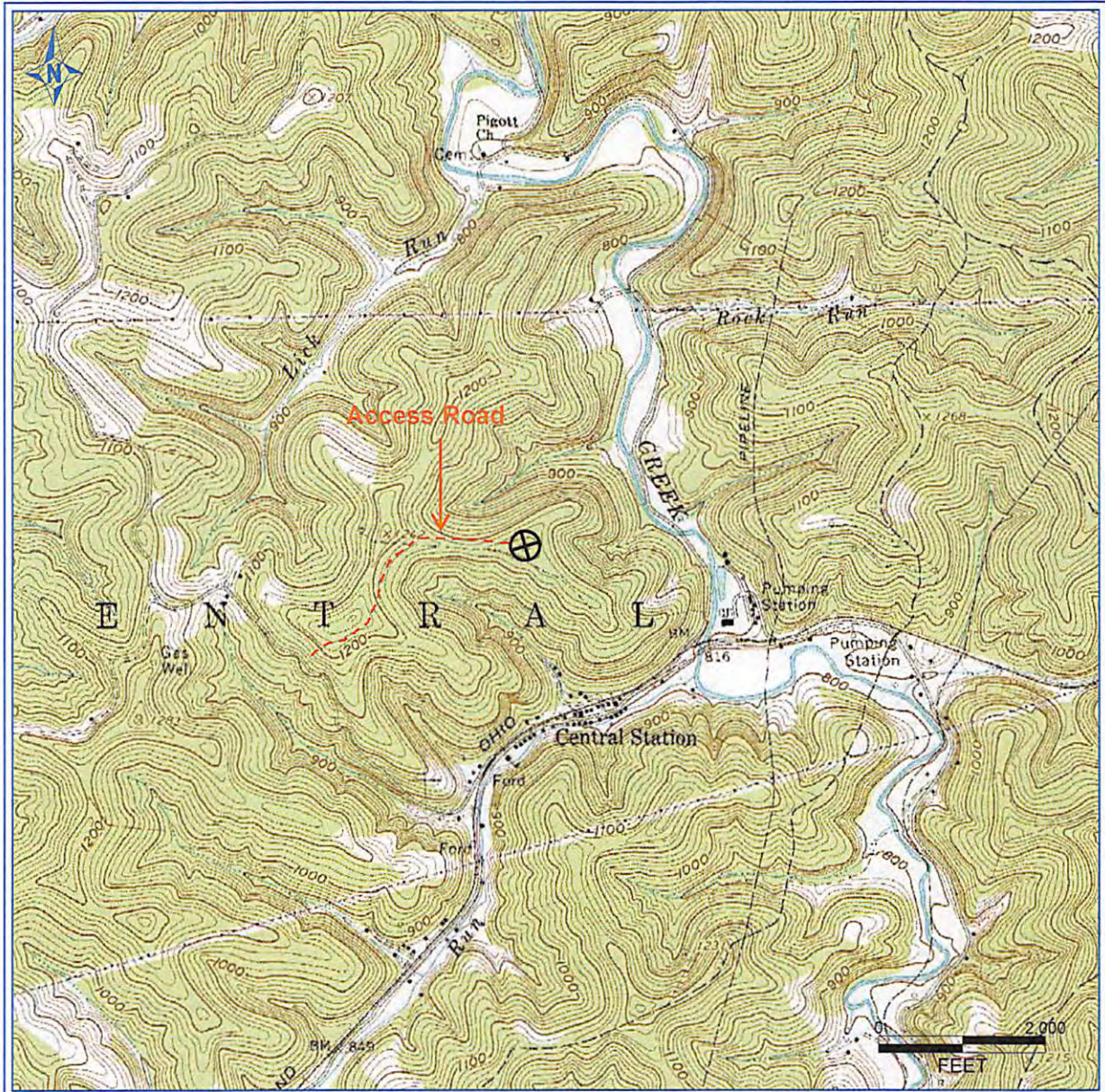
Conductor: blowhole clean with air, run casing, 10 bbls fresh water.  
 Surface: blowhole clean with air, trip to conductor shoe, trip to bottom, blowhole clean with air, trip out, run casing, circulate pipe capacity + 40 bbls fresh water followed by 25 bbls bentonite mud, 10 bbls fresh water spacer.  
 Intermediate: blowhole clean with air, trip to surface casing shoe, trip to bottom, blowhole clean with air, trip out, run casing, circulate 40 bbls brine water followed by 10 bbls fresh water and 25 bbls bentonite mud, pump 10 bbls fresh water.  
 Production: circulate with 14 lb/gal NaCl mud, trip to middle of lateral, circulate, pump high viscosity sweep, trip to base of curve, pump high viscosity sweep, trip to top of curve, trip to bottom, circulate, pump high viscosity sweep, trip out, run casing, circulate 10 bbls fresh water, pump 48 bbls barite pill, pump 10 bbls fresh water followed by 48 bbls mud flush and 10 bbls water.

**RECEIVED**  
Office of Oil and Gas

\*Note: Attach additional sheets as needed.

DEC 10 2013

12/13/2013



PETRA 1/29/2013 2:00:06 PM

17-06201 H6A SHALE UNIT 1H  
ANTERO RESOURCES CORP

PAD NAME: EXISTING JONATHAN DAVIS

Antero Resources Corporation
APPALACHIAN BASIN
Shale Unit 1H
Doddridge County, WV
0 2,000 4,000 FEET
REMARKS QUADRANGLE: WEST UNION WATERSHED: ARNOLD CREEK DISTRICT: CENTRAL
January 29, 2013

12/13/2013

LATITUDE 39°20'00"

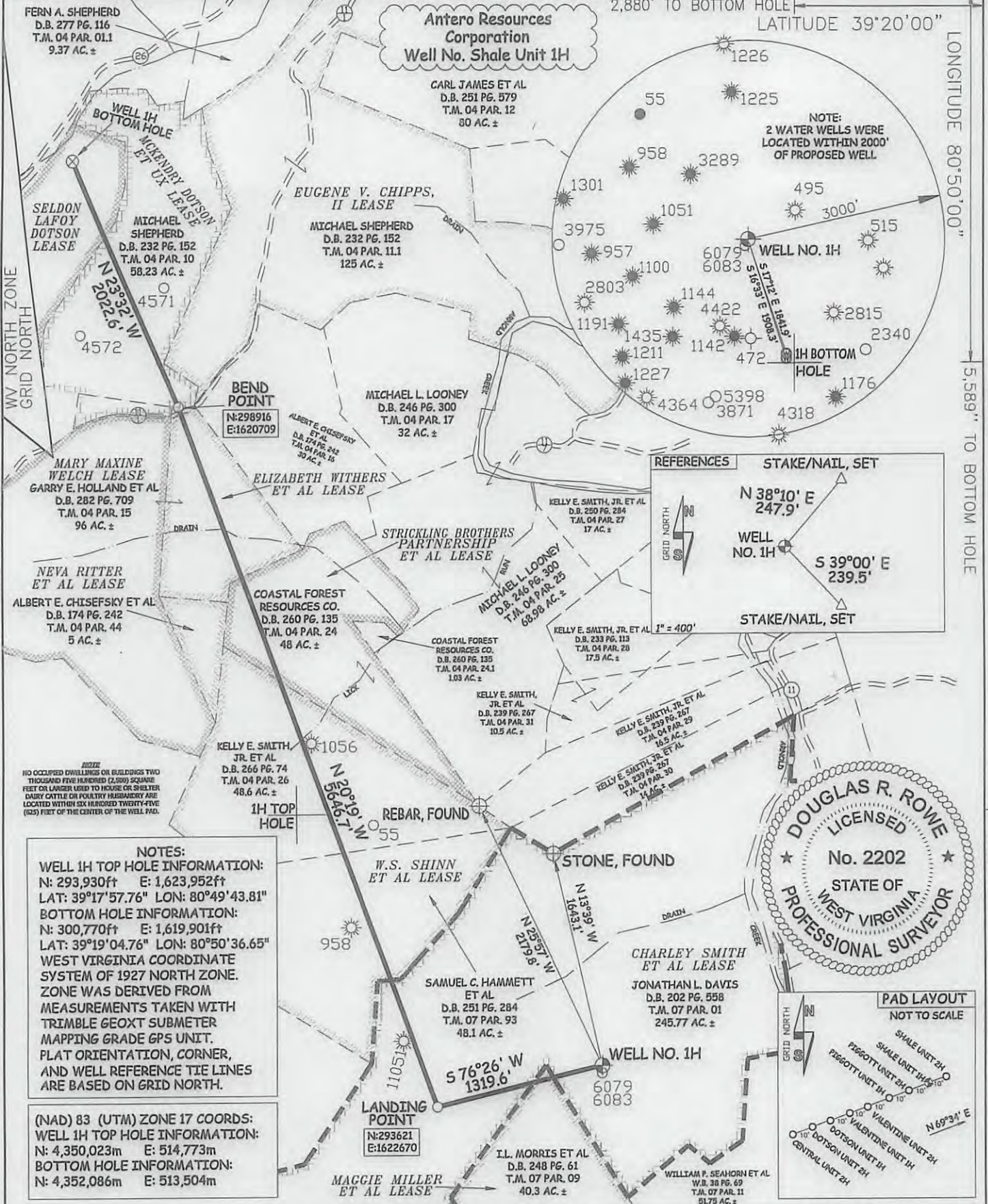
10,519'

LATITUDE 39°20'00"

LONGITUDE 80°50'00"

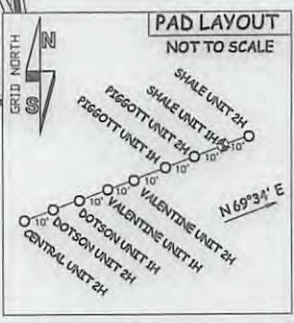
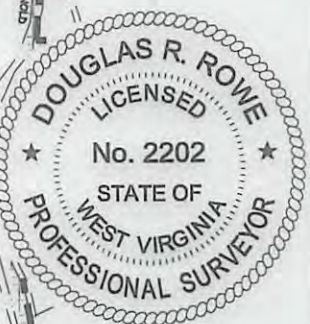
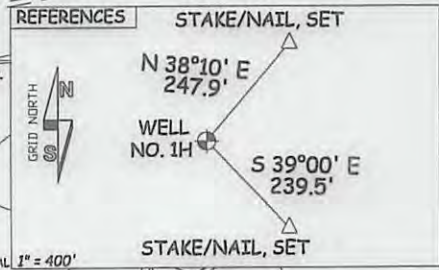
12,368'

LONGITUDE 80°47'30"



**NOTES:**  
 WELL 1H TOP HOLE INFORMATION:  
 N: 293,930ft E: 1,623,952ft  
 LAT: 39°17'57.76" LON: 80°49'43.81"  
 BOTTOM HOLE INFORMATION:  
 N: 300,770ft E: 1,619,901ft  
 LAT: 39°19'04.76" LON: 80°50'36.65"  
 WEST VIRGINIA COORDINATE SYSTEM OF 1927 NORTH ZONE. ZONE WAS DERIVED FROM MEASUREMENTS TAKEN WITH TRIMBLE GEOXT SUBMETER MAPPING GRADE GPS UNIT. PLAT ORIENTATION, CORNER, AND WELL REFERENCE TIE LINES ARE BASED ON GRID NORTH.

(NAD) 83 (UTM) ZONE 17 COORDS:  
 WELL 1H TOP HOLE INFORMATION:  
 N: 4,350,023m E: 514,773m  
 BOTTOM HOLE INFORMATION:  
 N: 4,352,086m E: 513,504m



JOB # 12-163WA  
 DRAWING # SHALE1HR2  
 SCALE 1" = 1000'  
 MINIMUM DEGREE OF ACCURACY SUBMETER  
 PROVEN SOURCE OF ELEV. SUBMETER MAPPING GRADE GPS

I THE UNDERSIGNED, HEREBY CERTIFY THAT THIS PLAT IS CORRECT TO THE BEST OF MY KNOWLEDGE AND BELIEF AND SHOWS ALL THE INFORMATION REQUIRED BY LAW AND THE RULES ISSUED AND PERSCRIBED BY THE DEPARTMENT OF ENVIRONMENTAL PROTECTION.



STATE OF WEST VIRGINIA, DIVISION OF ENVIRONMENTAL PROTECTION, OFFICE OF OIL AND GAS  
 WILLOW LAND SURVEYING PLLC  
 220 MASONIC AVE. PENNSBORO WEST VIRGINIA 26415

**LEGEND**  
 - - - Surface Owner Boundary Lines +/-  
 - - - Interior Surface Tracts +/-  
 X Existing Fence  
 ⊕ Found monument, as noted

DOUGLAS R. ROWE P.S. 2202

DATE 12/09/13

OPERATOR'S WELL# SHALE UNIT 1H

API WELL # 47 - 017 - 06201 HGA  
 STATE COUNTY PERMIT

STATE OF WEST VIRGINIA DEPARTMENT OF ENERGY DIVISION OF OIL AND GAS

WELL TYPE: OIL GAS X LIQUID INJECTION WASTE DISPOSAL  
 (IF "GAS") PRODUCTION X STORAGE DEEP SHALLOW X  
 LOCATION: ELEVATION 1,148' WATERSHED ARNOLD CREEK

QUADRANGLE WEST UNION 7.5' DISTRICT CENTRAL COUNTY DODD

SURFACE OWNER JONATHAN L. DAVIS ACREAGE 245.77 ACRES +/-  
 OIL & GAS ROYALTY OWNER CHARLEY SMITH ET AL; MAGGIE MILLER ET AL; W.S. SHINN ET AL; LEASE ACREAGE 213 ACRES +/-; 40 ACRES +/-; 84 ACRES +/-  
 STRICKLING BROTHERS PARTNERSHIP ET AL; ELIZABETH WITHERS ET AL; MCKENDRY DOTSON ET UX; SELDON LAFOY DOTSON 58.05 ACRES +/-; 23.3 ACRES +/-; 60 ACRES +/-; 27 ACRES +/-

PROPOSED WORK: DRILL X CONVERT DRILL DEEPER REDRILL FRACTURE OR STIMULATE X  
 PLUG OFF OLD FORMATION PERFORATE NEW FORMATION X OTHER PHYSICAL CHANGE IN WELL  
 (SPECIFY) PLUG & ABANDON CLEAN OUT & REPLUG  
 TARGET FORMATION MARCELLUS ESTIMATED DEPTH 6,950' TVD 15,800' MD

WELL OPERATOR ANTERO RESOURCES CORP. DESIGNATED AGENT DIANNA STAMPER  
 ADDRESS 1625 17TH STREET ADDRESS 5400 D BIG TYLER ROAD  
 DENVER, CO 80202 CHARLESTON, WV 25313

DATE 12/13/2013  
 COUNTY NAME PERMIT