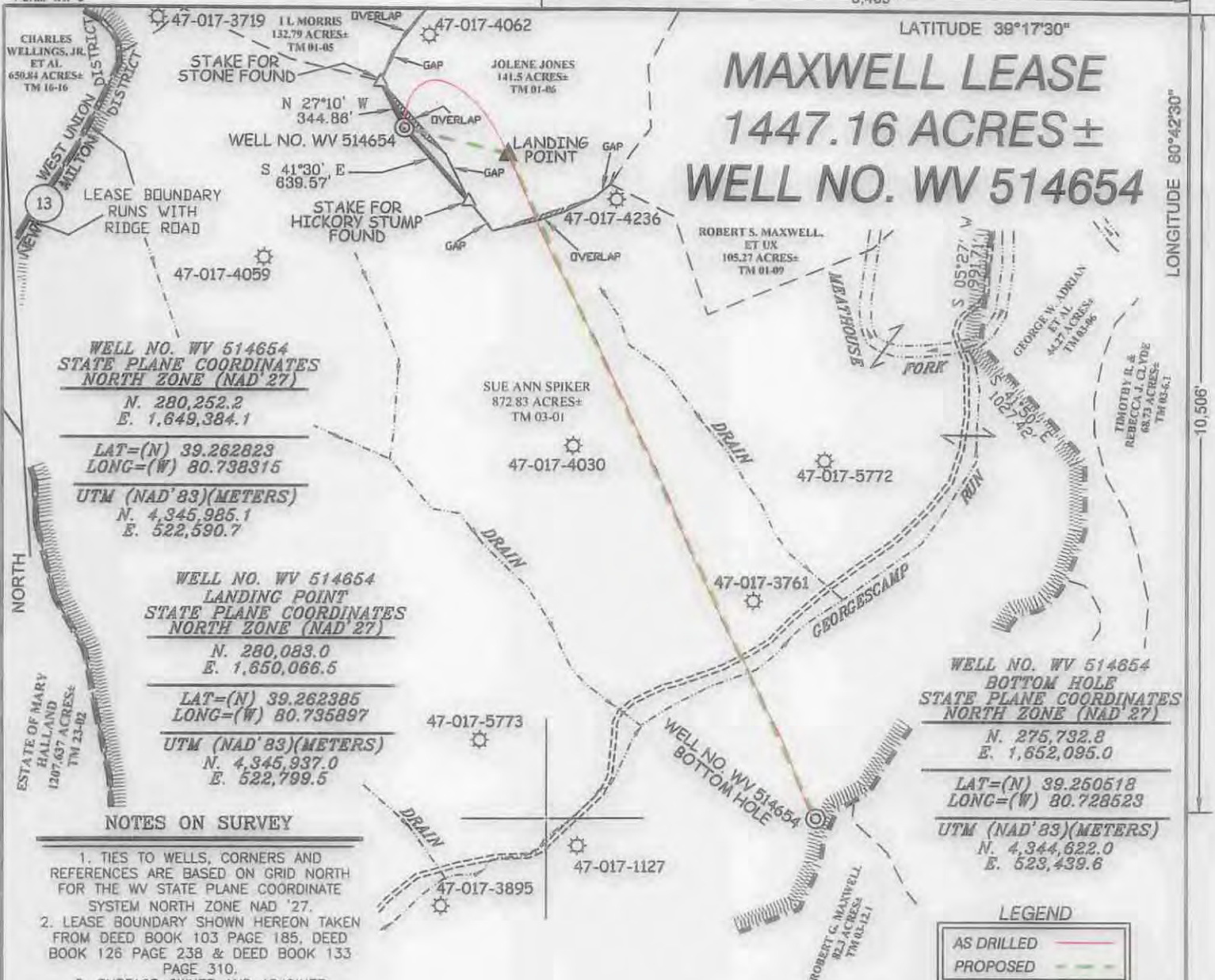


MAXWELL LEASE 1447.16 ACRES± WELL NO. WV 514654



WELL NO. WV 514654
STATE PLANE COORDINATES
NORTH ZONE (NAD 27)
N. 280,252.2
E. 1,649,384.1
LAT=(N) 39.262823
LONG=(W) 80.738315
UTM (NAD'83)(METERS)
N. 4,345,985.1
E. 522,590.7

WELL NO. WV 514654
LANDING POINT
STATE PLANE COORDINATES
NORTH ZONE (NAD 27)
N. 280,083.0
E. 1,650,066.5
LAT=(N) 39.262385
LONG=(W) 80.735897
UTM (NAD'83)(METERS)
N. 4,345,937.0
E. 522,799.5

WELL NO. WV 514654
BOTTOM HOLE
STATE PLANE COORDINATES
NORTH ZONE (NAD 27)
N. 275,732.8
E. 1,652,095.0
LAT=(N) 39.260518
LONG=(W) 80.728523
UTM (NAD'83)(METERS)
N. 4,344,622.0
E. 523,439.6

NOTES ON SURVEY

1. TIES TO WELLS, CORNERS AND REFERENCES ARE BASED ON GRID NORTH FOR THE WV STATE PLANE COORDINATE SYSTEM NORTH ZONE NAD '27.
2. LEASE BOUNDARY SHOWN HEREON TAKEN FROM DEED BOOK 103 PAGE 185, DEED BOOK 126 PAGE 238 & DEED BOOK 133 PAGE 310.
3. SURFACE OWNER AND ADJOINER INFORMATION TAKEN FROM THE ASSESSOR AND COUNTY CLERK RECORDS OF DODDRIDGE COUNTY IN JULY, 2012.
4. WELL LAT./LONG. (NAD'27) ESTABLISHED BY DGPS(SURVEY GRADE TIE TO CORS NETWORK).
5. ORIGINAL PLAT REVISED 04/26/13 TO CHANGE TARGET FORMATION AND BOTTOM HOLE COORDINATES, ETC.
6. PLAT UPDATED 07/15/14 TO SHOW THE AS DRILLED PATH INFORMATION PROVIDED BY EQT ON 12/16/13.



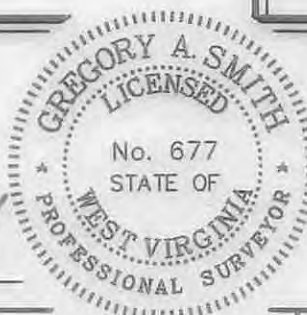
AS DRILLED INFORMATION

| | |
|---|--|
| WELL NO. WV 514654 BOTTOM HOLE STATE PLANE COORDINATES NORTH ZONE (NAD 27) N. 275,727.5 E. 1,652,080.7 LAT=(N) 39.250503 LONG=(W) 80.728573 UTM (NAD'83)(METERS) N. 4,344,620.4 E. 523,435.2 | WELL NO. WV 514654 STATE PLANE COORDINATES NORTH ZONE (NAD 27) N. 280,252.2 E. 1,649,384.1 LAT=(N) 39.262823 LONG=(W) 80.738315 UTM (NAD'83)(METERS) N. 4,345,985.1 E. 522,590.7 |
|---|--|

I THE UNDERSIGNED, HEREBY CERTIFY THAT THIS PLAT IS CORRECT TO THE BEST OF MY KNOWLEDGE AND BELIEF AND SHOWS ALL THE INFORMATION REQUIRED BY LAW AND THE REGULATIONS ISSUED AND PRESCRIBED BY THE DIVISION OF ENVIRONMENTAL PROTECTION.

P.S.
677

Gregory A. Smith



(*) DENOTES LOCATION OF WELL ON UNITED STATES TOPOGRAPHIC MAPS.
DATE DECEMBER 12 , 20 12
REVISED DATES 04/26/13 & 07/15/14
OPERATORS WELL NO. WV 514654
API WELL NO. 47-017-06186
STATE COUNTY PERMIT

MINIMUM DEGREE OF ACCURACY 1 / 2500 FILE NO. 7428ASDRILLED514654
PROVEN SOURCE OF ELEVATION DGPS (SURVEY GRADE TIE TO CORS NETWORK) SCALE 1" = 1,000'

STATE OF WEST VIRGINIA
DIVISION OF ENVIRONMENTAL PROTECTION
OFFICE OF OIL AND GAS



WELL TYPE: OIL GAS LIQUID INJECTION WASTE DISPOSAL IF "GAS" PRODUCTION STORAGE DEEP SHALLOW

LOCATION:
ELEVATION 1254' (PAD ELEVATION) WATERSHED TRIBUTARY OF GEORGESCAMP RUN
DISTRICT NEW MILTON COUNTY DODDRIDGE QUADRANGLE SMITHBURG 7.5'
SURFACE OWNER SUE ANN SPIKER ACREAGE 872.83±
ROYALTY OWNER LEWIS MAXWELL HEIRS LEASE ACREAGE 1447.16± LEASE NO. 080617
PROPOSED WORK:
DRILL CONVERT DRILL DEEPER REDRILL FRACTURE OR STIMULATE PLUG OFF OLD FORMATION
PERFORATE NEW FORMATION PLUG AND ABANDON CLEAN OUT AND REPLUG OTHER
PHYSICAL CHANGE IN WELL (SPECIFY) _____ TARGET FORMATION GENESEO
ESTIMATED DEPTH _____

WELL OPERATOR EQT PRODUCTION COMPANY DESIGNATED AGENT REX C. RAY
ADDRESS 115 PROFESSIONAL PLACE P.O. BOX 280 BRIDGEPORT, WV 26330 ADDRESS 115 PROFESSIONAL PLACE P.O. BOX 280 BRIDGEPORT, WV 26330

10/31/2014

COUNTY PERMIT