

State of West Virginia
Department of Environmental Protection - Office of Oil and Gas
Well Operator's Report of Well Work

API 47 - 017 - 06181 County Doddridge District Greenbrier
Quad Big Isaac Pad Name Marsden Pad Field/Pool Name _____
Farm name Marsden, Richard E. & Wilma Well Number Welling Unit 1H
Operator (as registered with the OOG) Antero Resources Corporation
Address 1615 Wynkoop Street City Denver State CO Zip 80202

As Drilled location NAD 83/UTM Attach an as-drilled plat, profile view, and deviation survey
Top hole Northing 4,344,285.221m Easting 534,630.803m
Landing Point of Curve Northing 4,344,147.89m Easting 534,626.78m
Bottom Hole Northing 4,341,589.129m Easting 535,539.175m

Elevation (ft) 975' GL Type of Well New Existing Type of Report Interim Final
Permit Type Deviated Horizontal Horizontal 6A Vertical Depth Type Deep Shallow
Type of Operation Convert Deepen Drill Plug Back Redrilling Rework Stimulate
Well Type Brine Disposal CBM Gas Oil Secondary Recovery Solution Mining Storage Other _____
Type of Completion Single Multiple Fluids Produced Brine Gas NGL Oil Other _____
Drilled with Cable Rotary

Drilling Media Surface hole Air Mud Fresh Water Intermediate hole Air Mud Fresh Water Brine
Production hole Air Mud Fresh Water Brine

Mud Type(s) and Additive(s)

Air - Foam & 4% KCL

Mud - Polymer

Date permit issued 3/28/2013 Date drilling commenced 6/28/2014 Date drilling ceased 8/24/2014
Date completion activities began 9/22/2014 Date completion activities ceased 12/6/2014
Verbal plugging (Y/N) N/A Date permission granted N/A Granted by N/A

Please note: Operator is required to submit a plugging application within 5 days of verbal permission to plug

Freshwater depth(s) ft 155' Open mine(s) (Y/N) depths N
Salt water depth(s) ft 1752' Void(s) encountered (Y/N) depths N
Coal depth(s) ft None Identified Cavern(s) encountered (Y/N) depths N
Is coal being mined in area (Y/N) N

RECEIVED
Office of Oil and Gas

JUL 06 2015

Reviewed by:

WV Department of
Environmental Protection

JK 7/24/15
07/24/2015

API 47-017 - 06181 Farm name Marsden, Richard E. & Wilma Well number Welling Unit 1H

CASING STRINGS	Hole Size	Casing Size	Depth	New or Used	Grade wt/ft	Basket Depth(s)	Did cement circulate (Y/N) * Provide details below*
Conductor	30"	20"	90'	New	106.5#/J-55	N/A	Y
Surface	17-1/2"	13 3/8"	373'	New	48#/H-40	N/A	Y
Coal							
Intermediate 1	12-1/4"	9 5/8"	2540'	New	36#/J-55	N/A	Y
Intermediate 2							
Intermediate 3							
Production	8-3/4"/8-1/2"	5 1/2"	16,352'	New	23#/P-110	N/A	Y
Tubing		2-3/8"	7165'		4.7#/N-80		
Packer type and depth set		N/A					

Comment Details _____

CEMENT DATA	Class/Type of Cement	Number of Sacks	Slurry wt (ppg)	Yield (ft ³ /sks)	Volume (ft ³)	Cement Top (MD)	WOC (hrs)
Conductor	Class A	196 sx	15.6	1.18	38 Cu. Ft.	0'	8 hrs
Surface	Class A	435 sx	15.6	1.18	259 Cu. Ft.	0'	8 hrs
Coal							
Intermediate 1	Class A	1002 sx	15.6	1.10	796 Cu. Ft.	0'	8 hrs
Intermediate 2							
Intermediate 3							
Production	Class H	1008 sx (Lead), 1458 sx (Tail)	13.5 (Lead), 15.2 (Tail)	1.44 (Lead), 1.80 (Tail)	3279 Cu. Ft.	-500' into Intermediate Casing	8 hrs
Tubing							

Drillers TD (ft) 16,353' MD, 7036' TVD (BHL), 7113' TVD (Deepest Point Drilled) Loggers TD (ft) 16,307'
 Deepest formation penetrated Marcellus Plug back to (ft) N/A
 Plug back procedure N/A

Kick off depth (ft) 6657'

** This is a subsequent well. Antero only runs wireline logs on one well on a multi-well pad (Flossie Unit 2H API# 47-017-06144). Please reference the wireline logs submitted with Form WR-35 for the Flossie Unit 2H. A Cement Bond Log has been included with this submittal.

Check all wireline logs run caliper density deviated/directional induction neutron resistivity gamma ray temperature

Well cored Yes No Conventional Sidewall Were cuttings collected Yes No

DESCRIBE THE CENTRALIZER PLACEMENT USED FOR EACH CASING STRING _____

Conductor - 0
 Surface - 1 above guide shoe, 1 above insert float, 1 every 4th joint to surface
 Intermediate - 1 above float joint, 1 above float collar, 1 every 4th joint to surface
 Production - 1 above float joint, 1 below float collar, 1 every 3rd joint to top of cement

WAS WELL COMPLETED AS SHOT HOLE Yes No DETAILS _____

WAS WELL COMPLETED OPEN HOLE? Yes No DETAILS _____

WERE TRACERS USED Yes No TYPE OF TRACER(S) USED N/A

RECEIVED
Office of Oil and Gas

JUL 06 2015
07/24/2015
WV Department of Environmental Protection

API 47- 017 - 06181 Farm name Marsden, Richard E. & Wilma Well number Welling Unit 1H

<u>PRODUCING FORMATION(S)</u>	<u>DEPTHS</u>	
	<u>7049' (Top) TVD</u>	<u>7191' (Top) MD</u>
_____	_____	_____
_____	_____	_____
_____	_____	_____

Please insert additional pages as applicable.

GAS TEST Build up Drawdown Open Flow OIL TEST Flow Pump

SHUT-IN PRESSURE Surface 3600 psi Bottom Hole --- psi DURATION OF TEST --- hrs

OPEN FLOW Gas 10,273 mcfpd Oil --- bpd NGL --- bpd Water --- bpd GAS MEASURED BY Estimated Orifice Pilot

<u>LITHOLOGY/ FORMATION</u>	<u>TOP</u>	<u>BOTTOM</u>	<u>TOP</u>	<u>BOTTOM</u>	<u>DESCRIBE ROCK TYPE AND RECORD QUANTITY AND TYPE OF FLUID (FRESHWATER, BRINE, OIL, GAS, H₂S, ETC)</u>
	<u>DEPTH IN FT NAME TVD</u>	<u>DEPTH IN FT TVD</u>	<u>DEPTH IN FT MD</u>	<u>DEPTH IN FT MD</u>	
	<u>0</u>		<u>0</u>		

*PLEASE SEE ATTACHED EXHIBIT 3

Please insert additional pages as applicable.

Drilling Contractor Frontier Drilling LLC
Address 562 Spring Run Road City Pennsboro State WV Zip 26415

Logging Company STRC
Address 1560 Good Hope Pike City Clarksburg State WV Zip 26301

Cementing Company Allied Oil & Gas Services, LLC
Address 1036 East Main Street City Bridgeport State WV Zip 26330

Stimulating Company Nabors Completion & Production Services, Co.
Address 1650 Hackers Creek City Jane Lew State WV Zip 26378

Please insert additional pages as applicable.

Completed by Natalie Komp Telephone 303-357-6820
Signature *Natalie Komp* Title Permitting Agent Date 6/9/2015

Submittal of Hydraulic Fracturing Chemical Disclosure Information Attach copy of FRACFOCUS Registry **WV Department of Environmental Protection**

RECEIVED
Office of Oil and Gas
JUL 06 2015
07/24/2015

API 47-017-06181 Farm Name Marsden, Richard E. & Wilma Well Number Welling Unit 1H

EXHIBIT 1

Stage No.	Perforation Date	Perforated from MD ft.	Perforated to MD ft.	Number of Perforations	Formations
1	22-Sept-14	16,091'	16,261'	60	Marcellus
2	11-Oct-14	15,890'	16,060'	60	Marcellus
3	12-Oct-14	15,689'	15,858'	60	Marcellus
4	12-Oct-14	15,487'	15,657'	60	Marcellus
5	12-Oct-14	15,286'	15,456'	60	Marcellus
6	13-Oct-14	15,085'	15,254'	60	Marcellus
7	13-Oct-14	14,883'	15,053'	60	Marcellus
8	13-Oct-14	14,682'	14,852'	60	Marcellus
9	14-Oct-14	14,481'	14,651'	60	Marcellus
10	14-Oct-14	14,279'	14,449'	60	Marcellus
11	14-Oct-14	14,078'	14,248'	60	Marcellus
12	15-Oct-14	13,877'	14,047'	60	Marcellus
13	15-Oct-14	13,676'	13,845'	60	Marcellus
14	15-Oct-14	13,474'	13,644'	60	Marcellus
15	15-Oct-14	13,273'	13,443'	60	Marcellus
16	16-Oct-14	13,273'	13,443'	60	Marcellus
17	16-Oct-14	12,870'	13,040'	60	Marcellus
18	16-Oct-14	12,669'	12,839'	60	Marcellus
19	16-Oct-14	12,468'	12,638'	60	Marcellus
20	17-Oct-14	12,266'	12,436'	60	Marcellus
21	17-Oct-14	12,065'	12,235'	60	Marcellus
22	17-Oct-14	11,864'	12,034'	60	Marcellus
23	17-Oct-14	11,663'	11,832'	60	Marcellus
24	18-Oct-14	11,461'	11,631'	60	Marcellus
25	18-Oct-14	11,260'	11,430'	60	Marcellus
26	18-Oct-14	11,059'	11,228'	60	Marcellus
27	18-Oct-14	10857'	11027'	60	Marcellus
28	19-Oct-14	10656'	10826'	60	Marcellus
29	19-Oct-14	10455'	10625'	60	Marcellus
30	19-Oct-14	10253'	10423'	60	Marcellus
31	19-Oct-14	10052'	10222'	60	Marcellus
32	20-Oct-14	9851'	10021'	60	Marcellus
33	20-Oct-14	9650'	9819'	60	Marcellus
34	20-Oct-14	9448'	9618'	60	Marcellus
35	21-Oct-14	9247'	9417'	60	Marcellus
36	21-Oct-14	9046'	9215'	60	Marcellus
37	21-Oct-14	8844'	9046'	60	Marcellus
38	21-Oct-14	8643'	8813'	60	Marcellus
39	21-Oct-14	8442'	8612'	60	Marcellus
40	22-Oct-14	8240'	8410'	60	Marcellus
41	22-Oct-14	8039'	8209'	60	Marcellus
42	22-Oct-14	7838'	8008'	60	Marcellus
43	22-Oct-14	7639'	7806'	60	Marcellus
44	23-Oct-14	7435'	7605'	60	Marcellus
45	24-Oct-14	7234'	7404'	60	Marcellus

RECEIVED
 Office of Oil and Gas
 JUL 06 2015
 WV Department of
 Environmental Protection
 07/24/2015

API 47-017-06181 Farm Name Marsden, Richard E. & Wilma Well Number Welling Unit 1H

EXHIBIT 2

Stage No.	Stimulations Date	Avg Pump Rate	Avg Treatment Pressure (PSI)	Max Breakdown Pressure (PSI)	ISIP (PSI)	Amount of Proppant (lbs)	Amount of Water (bbbls)	Amount of Nitrogen/ other (units)
1	11-Oct-14	61.4	7,340	6,066	5,057	173,700	7,356	N/A
2	11-Oct-14	61.1	7,160	6,235	4,987	189,300	6,162	N/A
3	12-Oct-14	63.2	7,118	5,969	5,830	189,700	6,120	N/A
4	12-Oct-14	63.0	7,272	6,334	5,774	212,600	6,345	N/A
5	12-Oct-14	61.3	7,141	6,313	5,746	240,500	6,762	N/A
6	13-Oct-14	63.8	7,166	6,033	4,870	238,000	6,725	N/A
7	13-Oct-14	64.2	7,247	6,100	5,280	239,400	6,744	N/A
8	13-Oct-14	61.4	7,097	5,820	5,497	239,700	6,663	N/A
9	14-Oct-14	62.7	7,062	5,999	5,363	235,100	6,644	N/A
10	14-Oct-14	63.6	6,995	5,801	5,518	237,900	6,556	N/A
11	14-Oct-14	62.4	6,862	5,890	5,105	241,000	6,592	N/A
12	15-Oct-14	62.4	6,881	5,844	5,471	236,500	6,670	N/A
13	15-Oct-14	63.1	7,305	6,130	4,783	220,600	7,147	N/A
14	15-Oct-14	61.8	7,133	5,750	5,711	236,700	6,531	N/A
15	15-Oct-14	63.4	7,181	6,190	5,677	238,800	6,542	N/A
16	16-Oct-14	63.5	7,075	6,050	5,843	239,800	6,489	N/A
17	16-Oct-14	63.8	7,168	5,845	6,064	238,900	6,473	N/A
18	16-Oct-14	64.1	7,318	5,728	6,058	236,400	6,492	N/A
19	16-Oct-14	65.1	6,931	5,711	5,680	237,900	6,446	N/A
20	17-Oct-14	63.8	6,920	5,580	5,726	236,700	6,067	N/A
21	17-Oct-14	64.3	7,192	5,175	5,245	237,300	6,491	N/A
22	17-Oct-14	64.6	6,883	5,273	5,820	239,900	6,452	N/A
23	17-Oct-14	63.9	6,944	5,572	5,565	238,700	6,377	N/A
24	18-Oct-14	62.7	6,834	5,588	5,138	235,500	6,289	N/A
25	18-Oct-14	63.0	6,727	5,606	5,643	238,100	6,282	N/A
26	18-Oct-14	64.8	6,996	5,720	5,582	201,300	6,783	N/A
27	18-Oct-14	64.8	6,932	5,909	5,680	238,400	6,274	N/A
28	19-Oct-14	62.5	6,747	5,784	5,778	242,000	6,265	N/A
29	19-Oct-14	64.3	6,819	6,002	5,631	238,300	6,266	N/A
30	19-Oct-14	64.7	6,777	5,839	5,715	240,200	6,201	N/A
31	19-Oct-14	63.8	6,635	5,918	5,566	238,000	6,276	N/A
32	20-Oct-14	63.3	6,708	5,742	5,453	235,600	6,242	N/A
33	20-Oct-14	63.7	6,723	5,764	5,359	234,100	6,198	N/A
34	20-Oct-14	63.8	6,717	5,713	5,691	238,400	6,097	N/A
35	21-Oct-14	59.9	6,752	6,128	4,940	238,600	6,223	N/A
36	21-Oct-14	63.3	7,018	6,372	5,105	242,100	6,182	N/A
37	21-Oct-14	63.3	6,515	5,867	5,177	239,600	6,056	N/A
38	21-Oct-14	64.6	6,798	6,086	5,296	236,700	6,058	N/A
39	21-Oct-14	64.7	6,653	5,859	5,599	238,200	6,069	N/A
40	22-Oct-14	64.3	6,543	6,021	5,661	237,800	6,034	N/A
41	22-Oct-14	62.7	6,673	6,364	5,545	224,400	6,475	N/A
42	22-Oct-14	63.8	6,662	5,914	5,084	237,300	5,955	N/A
43	22-Oct-14	60.5	6,560	5,991	5,797	210,700	6,316	N/A
44	23-Oct-14	61.2	6,504	6,147	5,846	173,100	6,327	N/A
45	24-Oct-14	64.2	6,419	6,006	5,076	216,200	6,327	N/A
	AVG=	63.2	6,913	5,906	5,490	10,349,700	287,861	

RECEIVED
Office of Oil and Gas

JUL 06 2015

WV Department of Environmental Protection
07/06/2015

EXHIBIT 3

LITHOLOGY/ FORMATION	TOP DEPTH (TVD)	BOTTOM DEPTH (TVD)	TOP DEPTH (MD)	BOTTOM DEPTH (MD)
	From Surface	From Surface	From Surface	From Surface
Fresh Water	155	N/A	155	N/A
Shale	0	287	0	287
Shale w/ Trace Coal	est. 287	307	est. 287	307
Sandstone	est. 307	747	est. 307	747
Unknown	est. 747	787	est. 747	787
Shale	est. 787	1,107	est. 787	1,107
Sandstone	est. 1107	1,167	est. 1107	1,167
Siltstone	est. 1167	1,187	est. 1167	1,187
Sandstone	est. 1187	1,307	est. 1187	1,307
Siltstone/Shale	est. 1307	1,587	est. 1307	1,587
Sandstone w/ Trace Coal	est. 1587	1,607	est. 1587	1,607
Sandstone	est. 1607	1,747	est. 1607	1,747
Shale	est. 1747	1,787	est. 1747	1,787
Sandstone	est. 1787	1,807	est. 1787	1,807
Shale	est. 1807	1,996	est. 1807	2,000
Big Lime	1,996	2,125	2,000	2,129
Big Injun	2,125	2,491	2,129	2,496
Gantz Sand	2,491	2,631	2,496	2,636
Fifty Foot Sandstone	2,631	2,718	2,636	2,723
Gordon	2,718	2,881	2,723	2,886
Fifth Sandstone	2,881	2,924	2,886	2,929
Bayard	2,924	3,414	2,929	3,419
Warren	3,414	3,639	3,419	3,644
Speechley	3,639	3,932	3,644	3,937
Baltown	3,932	4,415	3,937	4,420
Bradford	4,415	5,030	4,420	5,035
Benson	5,030	5,312	5,035	5,317
Alexander	5,312	5,505	5,317	5,510
Elk	5,505	6,054	5,510	6,059
Rhinestreet	6,054	6,522	6,059	6,527
Sycamore	6,522	6,747	6,527	6,755
Middlesex	6,747	6,892	6,755	6,918
Burkett	6,892	6,918	6,918	6,952
Tully	6,918	7,049	6,952	7,191
Marcellus	7,049	NA	7,191	NA

*Please note Antero determines shallow formation tops based on mud logs that are only run on one well on a multi-well pad. The measured depth (MD) data on subsequent wells may be slightly different due to the well's unique departure.

RECEIVED
Office of Oil and Gas
JUL 06 2015
WV Department of
Environmental Protection
07/24/2015

Hydraulic Fracturing Fluid Product Component Information Disclosure

Job Start Date:	10/11/2014
Job End Date:	10/24/2014
State:	West Virginia
County:	Doddridge
API Number:	47-017-06181-00-00
Operator Name:	Antero Resources Corporation
Well Name and Number:	Welling Unit 1H
Longitude:	-80.59884400
Latitude:	39.24710800
Datum:	NAD27
Federal/Tribal Well:	NO
True Vertical Depth:	7,113
Total Base Water Volume (gal):	12,090,162
Total Base Non Water Volume:	0

Hydraulic Fracturing Fluid Composition:

Trade Name	Supplier	Purpose	Ingredients	Chemical Abstract Service Number (CAS #)	Maximum Ingredient Concentration in Additive (% by mass)**	Maximum Ingredient Concentration in HF Fluid (% by mass)**	Comments
Water	ANTERO RESOURCES	Water	Water	7732-18-5	100.00000	90.29659	
Sand	Nabors Completion and Production Services	Sand - Bulk - West Virginia	Crystalline Silica, quartz	14808-60-7	99.90000	5.02669	
			Aluminum Oxide	1344-28-1	1.10000	0.05535	
			Iron Oxide	1309-37-1	0.10000	0.00503	
			Titanium Oxide	13463-67-7	0.10000	0.00503	
Sand	Nabors Completion and Production Services	Sand - Bulk - West Virginia	Crystalline Silica, quartz	14808-60-7	99.90000	3.50646	
			Aluminum Oxide	1344-28-1	1.10000	0.03861	
			Iron Oxide	1309-37-1	0.10000	0.00351	
			Titanium Oxide	13463-67-7	0.10000	0.00351	
Sand	Nabors Completion and Production Services	Sand - Bulk - West Virginia	Crystalline Silica, quartz	14808-60-7	99.90000	0.72590	
			Aluminum Oxide	1344-28-1	1.10000	0.00799	



RECEIVED
Office of Oil and Gas

JUL 06 2015

WV Department of
Environmental Protection
07/24/2015

			Iron Oxide	1309-37-1	0.10000	0.00073
			Titanium Oxide	13463-67-7	0.10000	0.00073
HCl Acid (12.5-18.0%) 22 Baume	Nabors Completion and Production Services	Bulk Acid	Water	7732-18-5	87.50000	0.17841
			Hydrochloric Acid	7647-01-0	18.00000	0.03670
LSG-100L	Nabors Completion and Production Services	Gelling Agents	Petroleum Distillates	64742-47-8	70.00000	0.09426
WFR-6W	Nabors Completion and Production Services	Friction Reducer	Anionic Water-Soluble Polymer Emulsion	Proprietary	100.00000	0.06229
AQUACAR DB 20	Nabors Completion and Production Services	Biocides	Polyethylene glycol	26322-68-3	54.50000	0.00893
			2,2-Dibromo-3-nitro- propionamide (DBNPA)	10222-01-2	20.00000	0.00328
			Sodium bromide	7647-15-6	4.00000	0.00066
			Dibromoacetonitrile	3252-43-5	3.00000	0.00049
Super TSC-LT	Nabors Completion and Production Services	Paraffin & Scale Additives	100% Non-Hazardous Mixture	Proprietary	100.00000	0.00626
Super GREEN SOLV- M	Nabors Completion and Production Services	Paraffin & Scale Additives	Aliphatic Hydrocarbons	Proprietary	95.00000	0.00225
			Dodecane	Proprietary	14.00000	0.00033
			tetradecane	Proprietary	11.00000	0.00026
			Tridecane	Proprietary	9.00000	0.00021
			Undecane	Proprietary	8.00000	0.00019
OB-2-LT	Nabors Completion and Production Services	Gel Breakers	Ammonium Persulfate	7727-54-0	85.00000	0.00134
			Crystalline Silica (in the form of quartz)	14808-60-7	10.00000	0.00016
Super TSC 2 LT	Nabors Completion and Production Services	Paraffin & Scale Additives	Bis(hexamethylene diaminepenta methylene phosphonic acid))	Proprietary	10.00000	0.00069
Acid Inhibitor 2 (A1-2)	Nabors Completion and Production Services	Acid Corrosion Inhibitors	Glycol Ethers	111-46-6	40.00000	0.00015
			isopropyl Alcohol	67-63-0	40.00000	0.00015

RECEIVED
Office of Oil and Gas
JUL 06 2015

WV Department of
Environmental Protection
07/24/2015

EB-4L	Nabors Completion and Production Services	Gel Breakers	Ethylene Glycol	107-21-1	40.00000	0.00017
			Propargyl Alcohol	107-19-7	40.00000	0.00015
			Ethoxylated Nonylphenol	68412-54-4	13.00000	0.00005
			Tar bases, quinoline derivs, benzyl chloride-quaternized	72480-70-7	10.00000	0.00004
Ingredients shown above are subject to 29 CFR 1910.1200(i) and appear on Material Safety Data Sheets (MSDS). Ingredients shown below are Non-MSDS.						
Other Ingredients	Nabors Completion and Production Services	Other Ingredients				
			guar gum	9000-30-0	50.00000	0.06733
			Copolymer	Proprietary	100.00000	0.06229
			Water	7732-18-5	40.00000	0.02492
			Isoparaffinic Solvent	64742-47-8	26.00000	0.01620
			Water	7732-18-5	90.00000	0.00617
			Water	7732-18-5	32.00000	0.00524
			Water	7732-18-5	60.00000	0.00376
			Proprietary	Proprietary	50.00000	0.00313
			Surfactant	68439-51-0	2.00000	0.00269
			Crystalline Silica (in the form of quartz)	14808-60-7	2.00000	0.00269
			Ethoxylated alcohols	Proprietary	4.00000	0.00249
			Ethylene Glycol	107-21-1	4.00000	0.00249
			Surfactant Blend	Proprietary	3.00000	0.00187
			Proprietary	Proprietary	15.00000	0.00094
			Proprietary	Proprietary	15.00000	0.00094
			Proprietary	Proprietary	15.00000	0.00094
			Proprietary	Proprietary	100.00000	0.00043
			Sugar	57-50-1	100.00000	0.00043
			Alkali Chloride salt	Proprietary	15.00000	0.00024
			Water	7732-18-5	100.00000	0.00021
			Water	7732-18-5	48.00000	0.00019
			2,2-Dibromomalonamide	73003-80-2	1.00000	0.00016
			Monobromo-3-nitropropionamide	1113-55-9	1.00000	0.00016
			Sodium Hydroxide	1310-73-2	1.00000	0.00007
			2-Propanamide as residual	79-06-1	0.10000	0.00006
			2-Butoxyethanol	111-76-2	13.00000	0.00005
			Proprietary	Proprietary	1.00000	0.00000
			Proprietary	Proprietary	1.00000	0.00000
			Proprietary	Proprietary	1.00000	0.00000
			Proprietary	Proprietary	1.00000	0.00000
			Dioxane	123-91-1	1.00000	0.00000
			Organophilic Clay	68953-58-2		

RECEIVED
 Office of Oil and Gas
 JUL 20 2015
 WV Department of
 Environmental Protection
 07/24/2015

* Total Water Volume sources may include fresh water, produced water, and/or recycled water
** Information is based on the maximum potential for concentration and thus the total may be over 100%

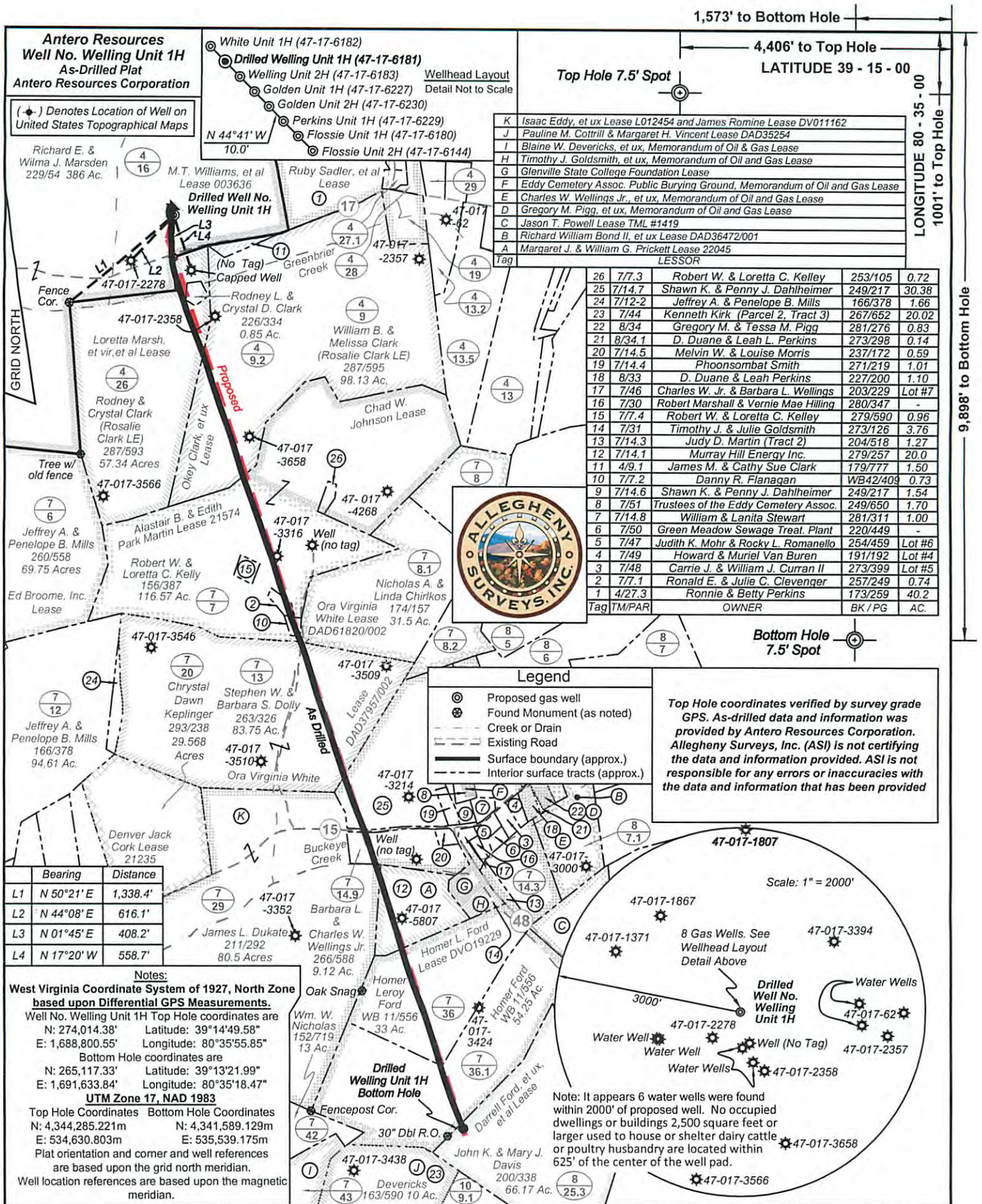
Note: For Field Development Products (products that begin with FDP), MSDS level only information has been provided.
Ingredient information for chemicals subject to 29 CFR 1910.1200(i) and Appendix D are obtained from suppliers Material Safety Data Sheets (MSDS)

RECEIVED
Office of Oil and Gas

JUL 06 2015

**WV Department of
Environmental Protection**

07/24/2015



FILE NO: 235-30-G-12
DRAWING NO: Welling 1H Well Plat As-Drill
SCALE: 1" = 1200'
MINIMUM DEGREE OF ACCURACY: Submeter
PROVEN SOURCE OF ELEVATION: WVDOT, Bridgeport, WV

STATE OF WEST VIRGINIA
DEPARTMENT OF ENVIRONMENTAL PROTECTION
OIL AND GAS DIVISION

DATE: April 13 2015
OPERATOR'S WELL NO. Welling Unit 1H
API WELL NO
47 - 017 - 06181
STATE COUNTY PERMIT

WELL TYPE: OIL GAS LIQUID INJECTION WASTE DISPOSAL
(IF GAS) PRODUCTION: STORAGE DEEP SHALLOW
Existing Grade - 975'
LOCATION: ELEVATION: Original Grade - 975' WATERSHED: Headwaters Middle Island Creek QUADRANGLE: Big Isaac
DISTRICT: Greenbrier Richard E. & Wilma J. Marsden Isaac Eddy, et ux & James Romine; Loretta Marsh, et vir, et al
SURFACE OWNER: Wilma J. Marsden Ora Virginia White; Ora Virginia White DAD61820/002; 22045
ROYALTY OWNER: M.T. Williams, et al; Okey Clark, et ux; Margaret J. & William G. Prickett L012454 & DV011162
LEASE NO: 003636; DAD37957/002 ACREAGE: 386 50; 12.18
PROPOSED WORK: DRILL CONVERT DRILL DEEPER FRACTURE OR STIMULATE PLUG OFF OLD FORMATION
 PERFORATE NEW FORMATION OTHER PHYSICAL CHANGE IN WELL (SPECIFY) As-Drilled
 PLUG AND ABANDON CLEAN OUT AND REPLUG TARGET FORMATION: Marcellus Shale ESTIMATED DEPTH: 16,353' MD 7,036' TVD

WELL OPERATOR: Antero Resources Corporation DESIGNATED AGENT: Dianna Stamper - CT Corporation System
ADDRESS: 1615 Wynkoop Street ADDRESS: 5400 D Big Tyler Road
Denver, CO 80202 Charleston, WV 25313