

17-0618D



Antero Resources
Flossie Unit 1H
Doddridge County WV
Northing: 14252125.91
Easting: 1754023.86
As Drilled

WELL DETAILS: Flossie Unit 1H
 Ground Level: 971.0

+N/-S	+E/-W	Northing	Easting	Latitude	Longitude	Slot
0.0	0.0	14252125.91	1754023.8639	14° 49.246 N	80° 35' 55.384 W	

PROJECT DETAILS: Doddridge County WV

Geodetic System: Universal Transverse Mercator (US Survey) Feet
 Datum: NAD 1927 (NADCON CONUS)
 Ellipsoid: Clarke 1866
 Zone: Zone 17N (84 W to 78 W)
 System Datum: Mean Sea Level

REFERENCE INFORMATION

Coordinate (NE) Reference: Well Flossie Unit 1H, Grid North
 Vertical (TVD) Reference: Flossie Unit 1H GL 971' + 24' RKB @ 995.0usft (Original Well Elev)
 Section (VS) Reference: Slot - (0.0N, 0.0E)
 Measured Depth Reference: Flossie Unit 1H GL 971' + 24' RKB @ 995.0usft (Original Well Elev)
 Calculation Method: Minimum Curvature

Genie Lightfoot
 15:31, September 06 2013

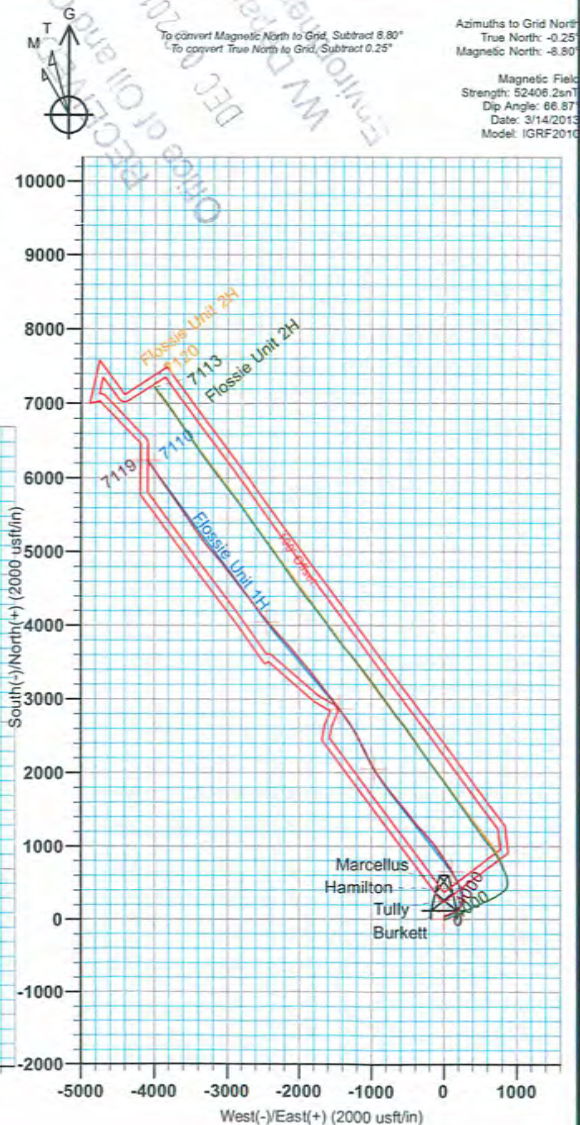
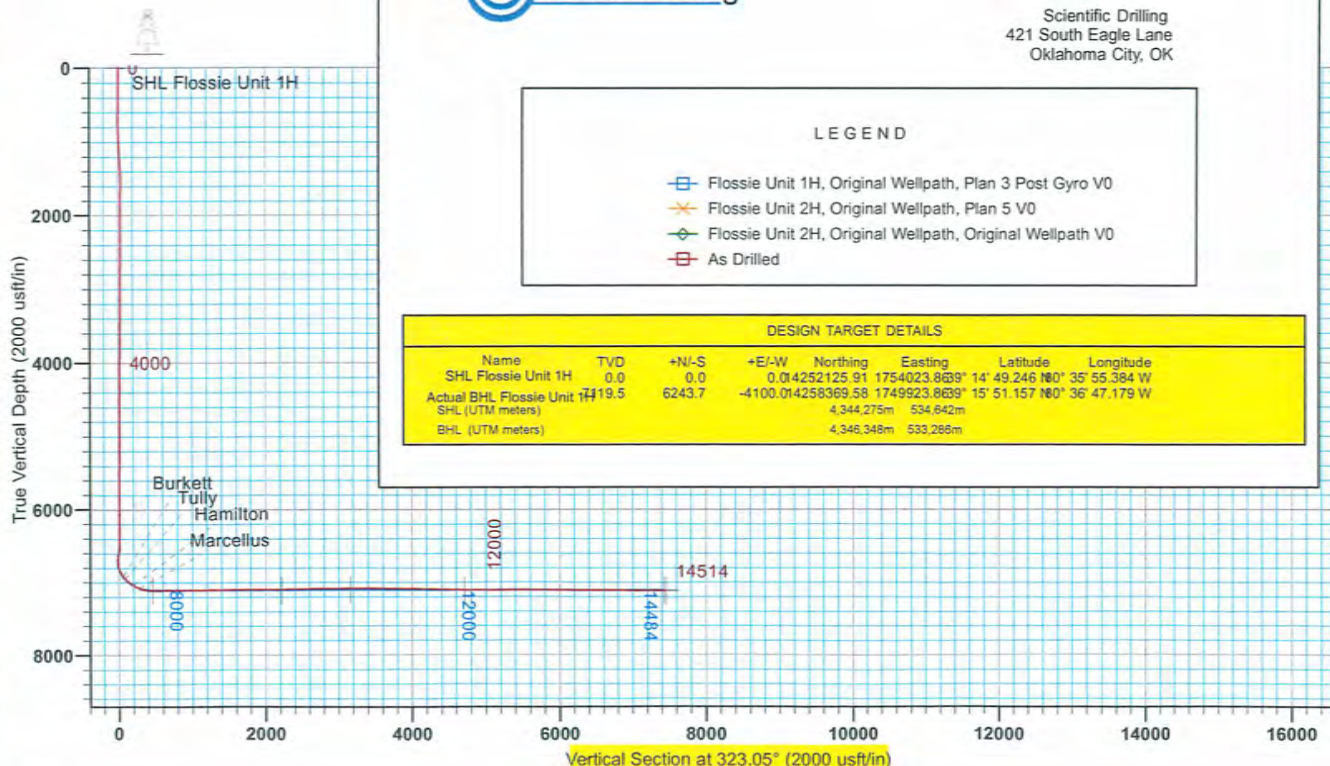
Scientific Drilling
 421 South Eagle Lane
 Oklahoma City, OK

LEGEND

- Flossie Unit 1H, Original Wellpath, Plan 3 Post Gyro V0
- Flossie Unit 2H, Original Wellpath, Plan 5 V0
- Flossie Unit 2H, Original Wellpath, Original Wellpath V0
- As Drilled

DESIGN TARGET DETAILS

Name	TVD	+N/-S	+E/-W	Northing	Easting	Latitude	Longitude
SHL Flossie Unit 1H	0.0	0.0	0.0	14252125.91	1754023.8639	14° 49.246 N	80° 35' 55.384 W
Actual BHL Flossie Unit 1H	1419.5	6243.7	-4100.0	14258369.58	1749923.8639	15° 51.157 N	80° 36' 47.179 W
SHL (UTM meters)				4,344,275m	534,642m		
BHL (UTM meters)				4,346,346m	533,286m		



Office of Oil and Gas
 DEC 06 2013
 Environmental Protection
 WV Department of Environmental Protection
 To convert Magnetic North to Grid, Subtract 8.80°
 To convert True North to Grid, Subtract 0.25°

Azimuth to Grid North
 True North: -0.25°
 Magnetic North: -8.80°

Magnetic Field
 Strength: 52400.2anT
 Dip Angle: 86.87°
 Date: 3/14/2013
 Model: IGRF2010