

17-06166



**Antero Resources**  
**Emily Unit 1H**  
**Doddridge County WV**  
**Northing: 14277820.83**  
**Easting: 1725252.44**  
**Original Wellpath**

**WELL DETAILS:** Emily Unit 1H

+N/-S	+E/-W	Northing	Ground Level	Easting	Latitude	Longitude	Slot
0.0	0.0	14277820.83	1237.0	1725252.44	39° 19' 4.408 N	80° 42' 0.150 W	

**REFERENCE INFORMATION**

Coordinate (N/E) Reference: Well Emily Unit 1H, Grid North  
 Vertical (TVD) Reference: Emily 1H 1237 GL + 23 KB @ 1205.Dust (Original Well Elev)  
 Section Elev Reference: SHL (0.0, 0.0)  
 Measured Depth Reference: Emily 1H 1237 GL + 23 KB @ 1205.Dust (Original Well Elev)  
 Calculation Method: Minimum Curvature

**PROJECT DETAILS:** Doddridge County WV

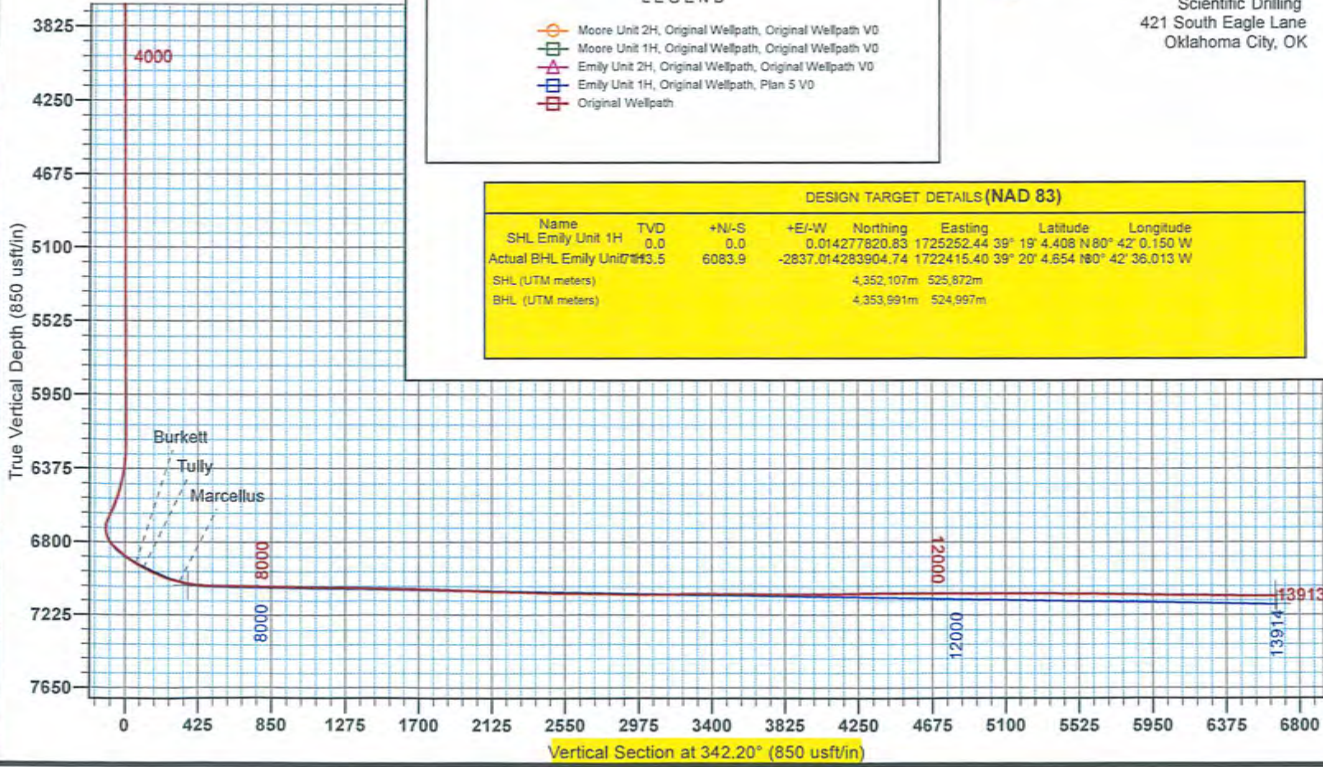
Geodetic System: Universal Transverse Mercator (US Survey Feet)  
 Datum: NAD 1927 (NADCON CONUS)  
 Ellipsoid: Clarke 1866  
 Zone: Zone 17N (84 W to 78 W)  
 System Datum: Mean Sea Level

**LEGEND**

- Moore Unit 2H, Original Wellpath, Original Wellpath V0
- Moore Unit 1H, Original Wellpath, Original Wellpath V0
- Emily Unit 2H, Original Wellpath, Original Wellpath V0
- Emily Unit 1H, Original Wellpath, Plan 5 V0
- Original Wellpath

**DESIGN TARGET DETAILS (NAD 83)**

Name	TVD	+N/-S	+E/-W	Northing	Easting	Latitude	Longitude
SHL Emily Unit 1H	0.0	0.0	0.014277820.83	1725252.44	39° 19' 4.408 N	80° 42' 0.150 W	
Actual BHL Emily Unit 1H	6083.5	6083.9	-2837.014283904.74	1722415.40	39° 20' 4.654 N	80° 42' 36.013 W	
SHL (UTM meters)				4,352,107m	525,872m		
BHL (UTM meters)				4,353,991m	524,997m		



RECEIVED  
 OIL and Gas  
 DEC 09 2013  
 Environmental Protection  
 M. Department of

To convert Magnetic North to Grid, Subtract 8.67°  
 To convert True North to Grid, Subtract 0.19°

Azimuths to Grid North  
 True North: -0.19°  
 Magnetic North: -8.67°

Magnetic Field  
 Strength: 52459.8nT  
 Dip Angle: 66.95°  
 Date: 2/19/2013  
 Model: IGRF2010

