

Antero Resources
Well No. Walter Unit 2H
Antero Resources Appalachian Corporation

(⊕) Denotes location of well on United States topographic maps

1,959' to Bottom Hole
LATITUDE 39 - 15 - 00
LONGITUDE 80 - 32 - 30

Well Location References



Line	Bearing	Distance
L1	N 86°17' E	915.8'
L2	N 83°01' W	1209.3'
L3	S 61°53' W	97.7'
L4	N 62°37' W	1489.1'

Top Hole 7.5' Spot



I, the undersigned, hereby certify that this plat is correct to the best of my knowledge and belief and shows all the information required by law and the regulations issued and prescribed by the Department of Environmental Protection.

Kenneth J. Plum
Kenneth J. Plum, P.S. 2216

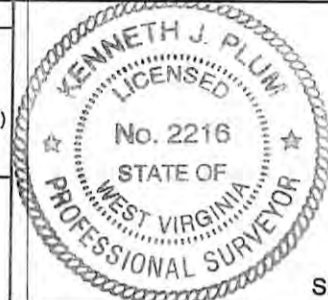
Notes:
West Virginia Coordinate System of 1927, North Zone based upon Differential GPS Measurements.
 Well No. Walter Unit 2H Top Hole coordinates are
 N: 273,036.23 Latitude: 39°14'40.95"
 E: 1,697,474.59 Longitude: 80°34'05.45"
 Bottom Hole coordinates are
 N: 268,304.80 Latitude: 39°13'54.83"
 E: 1,703,047.43 Longitude: 80°32'53.92"
UTM Zone 17, NAD 1983
 Top Hole Coordinates: Bottom Hole Coordinates:
 N: 4,344,031.321m N: 4,342,618.206m
 E: 537,278.368m E: 539,000.199m
 Plat orientation and corner and well references are based upon the grid north meridian.
 Well location references are based upon the magnetic meridian.

L3 Detail

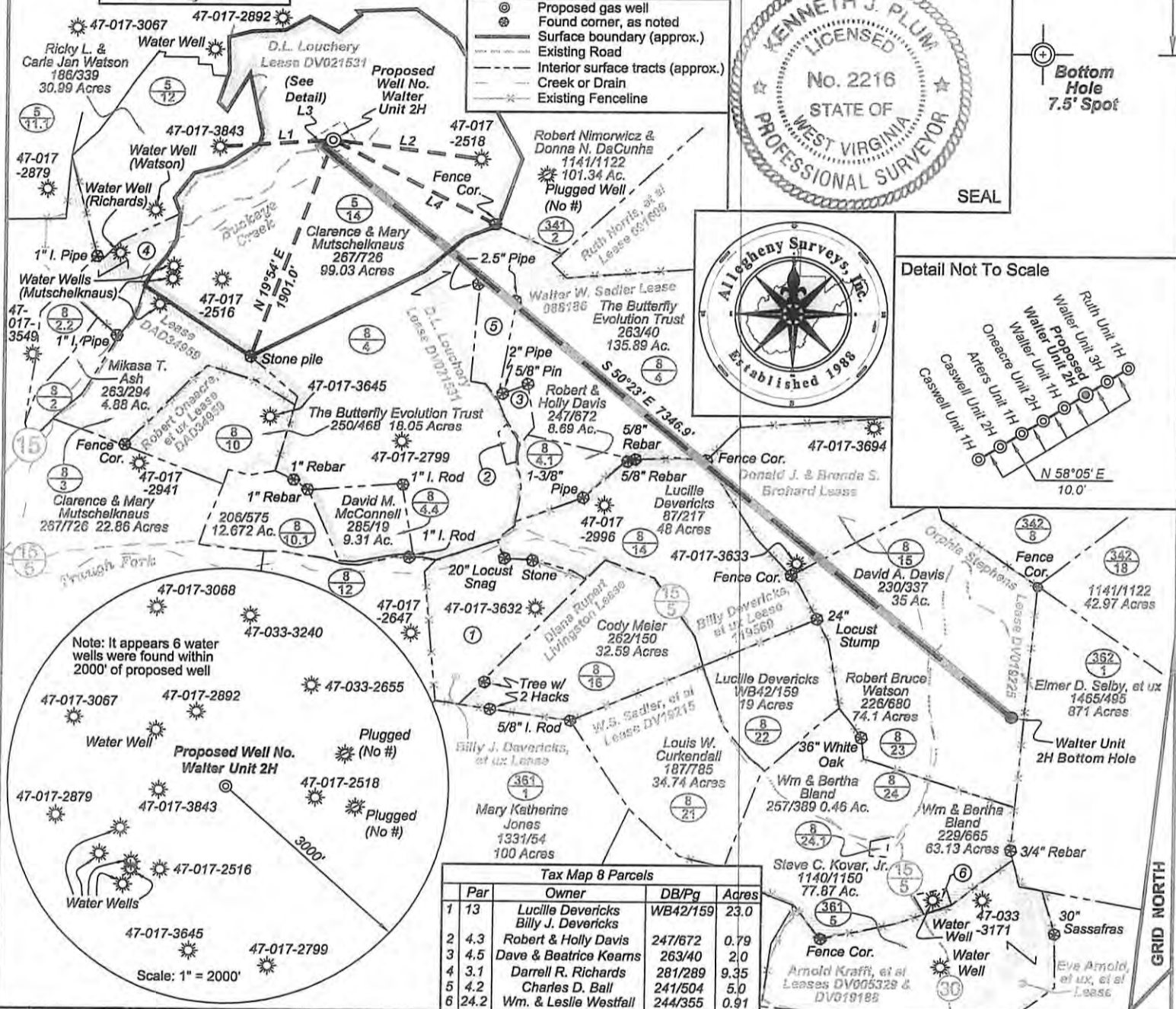


Legend

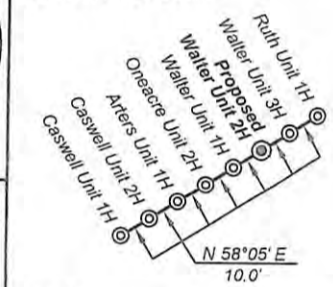
- ⊕ Proposed gas well
- ⊙ Found corner, as noted
- Surface boundary (approx.)
- Existing Road
- - - Interior surface tracts (approx.)
- - - Creek or Drain
- * - Existing Fenceline



Bottom Hole 7.5' Spot



Detail Not To Scale



Tax Map 8 Parcels

Par	Owner	DB/Pg	Acres
1 13	Lucille Devericks Billy J. Devericks	WB42/159	23.0
2 4.3	Robert & Holly Davis	247/672	0.79
3 4.5	Dave & Beatrice Kearns	263/40	2.0
4 3.1	Darrell R. Richards	281/289	9.35
5 4.2	Charles D. Ball	241/504	5.0
6 24.2	Wm. & Leslie Westfall	244/355	0.91

FILE NO: 131-30-G-12
 DRAWING NO: 131-12 Walter 2H Well
 SCALE: 1" = 1200'
 MINIMUM DEGREE OF ACCURACY:
 Submeter
 PROVEN SOURCE OF ELEVATION:
 WVDOT, Bridgeport, WV

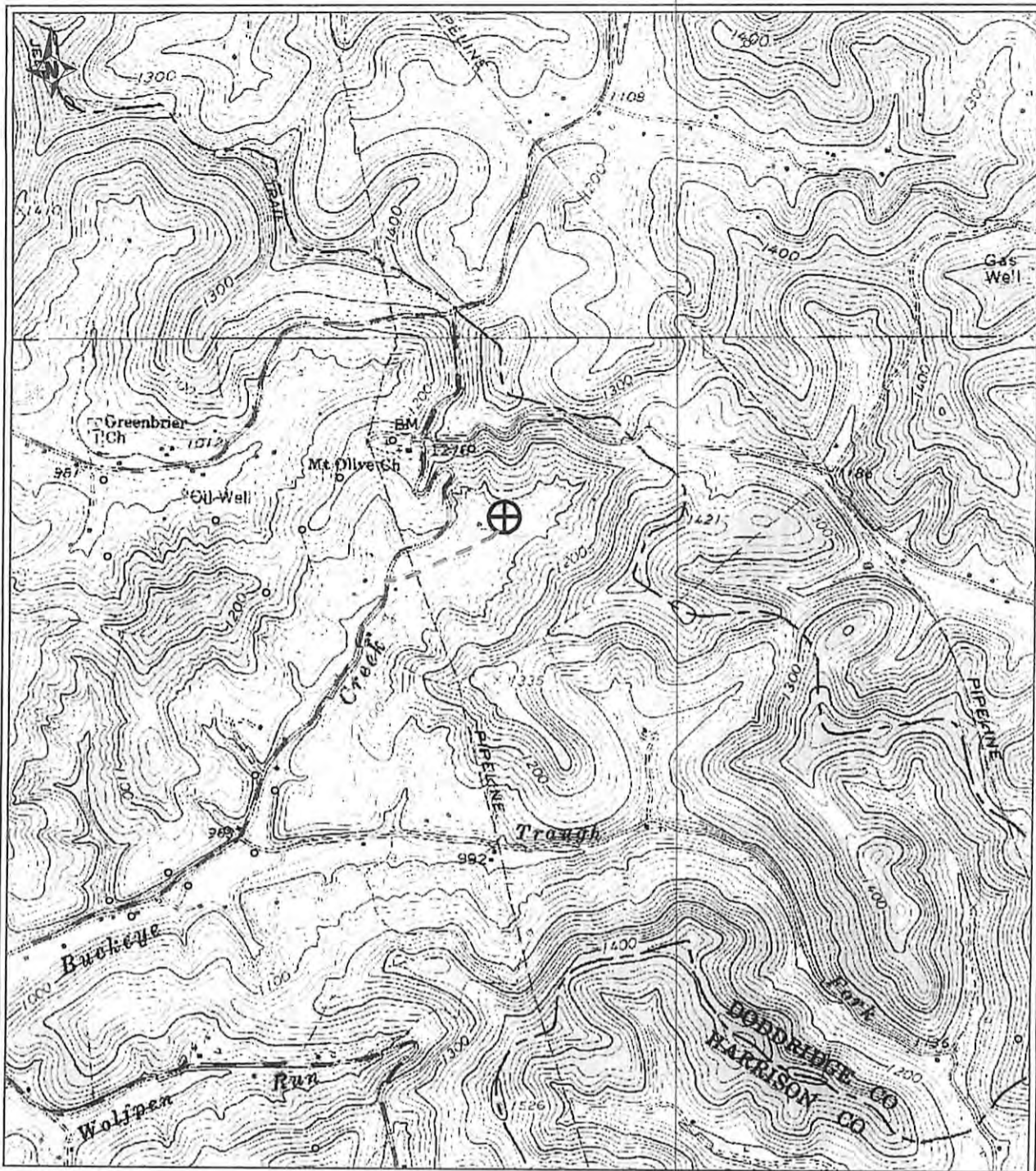
STATE OF WEST VIRGINIA
DEPARTMENT OF ENVIRONMENTAL PROTECTION
OFFICE OF OIL AND GAS

DATE: October 5 20 12
 OPERATOR'S WELL NO. Walter Unit 2H
 API WELL NO:
 47 - 017 - 6162+6
 STATE COUNTY PERMIT

WELL TYPE: OIL GAS LIQUID INJECTION WASTE DISPOSAL
 (IF GAS) PRODUCTION: STORAGE DEEP SHALLOW
 LOCATION: ELEVATION: 1050' WATERSHED: Buckeye Creek QUADRANGLE: Big Isaac
 DISTRICT: Greenbrier COUNTY: Doddridge
 SURFACE OWNER: Clarence & Mary Mutschelknaus ACREAGE: 99.03
 ROYALTY OWNER: D. L. Louchery; Walter W. Sadler; Billy Devericks, et ux LEASE NO: DV019225 ACREAGE: 172; 85.25; 48; 130
 PROPOSED WORK: DRILL CONVERT DRILL DEEPER FRACTURE OR STIMULATE PLUG OFF OLD FORMATION
 PERFORATE NEW FORMATION OTHER PHYSICAL CHANGE IN WELL (SPECIFY) TVD 7,400'
 PLUG AND ABANDON CLEAN OUT AND REPLUG TARGET FORMATION: Marcellus Shale ESTIMATED DEPTH: MD 15,300'

WELL OPERATOR: Antero Resources Appalachian Corporation DESIGNATED AGENT: Dianna Stamper - CT Corporation System
 ADDRESS: 1625 17th Street ADDRESS: 5400 D Big Tyler Road
 Denver, CO 80202 Charleston, WV 25313

01/11/2013



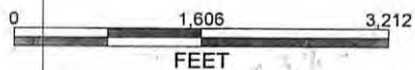
PETRA 7/6/2012 12:05:34 PM

Antero Resources Corporation

APPALACHIAN BASIN

Walter Unit 2H

Harrison County



REMARKS
QUADRANGLE: BIG ISAAC
WATERSHED: BUCKEYE CREEK
DISTRICT: GREENBRIER

By: ECM

July 6, 2012