

17-06162

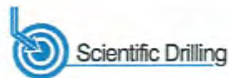


Antero Resources
Walter Unit 2H
Doddridge County WV
Northing: 14251326.44
Easting: 1762672.98
As Drilled

WELL DETAILS: Walter Unit 2H						
+N/-S	+E/-W	Northing	Ground Level	1050.0	Longitude	Slot
0.0	0.0	14251326.44	Easting	1762672.98	39° 14' 40.948 N	80° 34' 5.454 W

REFERENCE INFORMATION	
Co-ordinate (NE) Reference:	Well Walter Unit 2H, Grid North
Vertical (TVD) Reference:	Walter Unit 2H 1050' GL + 25' RKB @ 1075.0usft (Original Well Elev)
Section (VS) Reference:	Slot - (0.0N, 0.0E)
Measured Depth Reference:	Walter Unit 2H 1050' GL + 25' RKB @ 1075.0usft (Original Well Elev)
Calculation Method:	Minimum Curvature

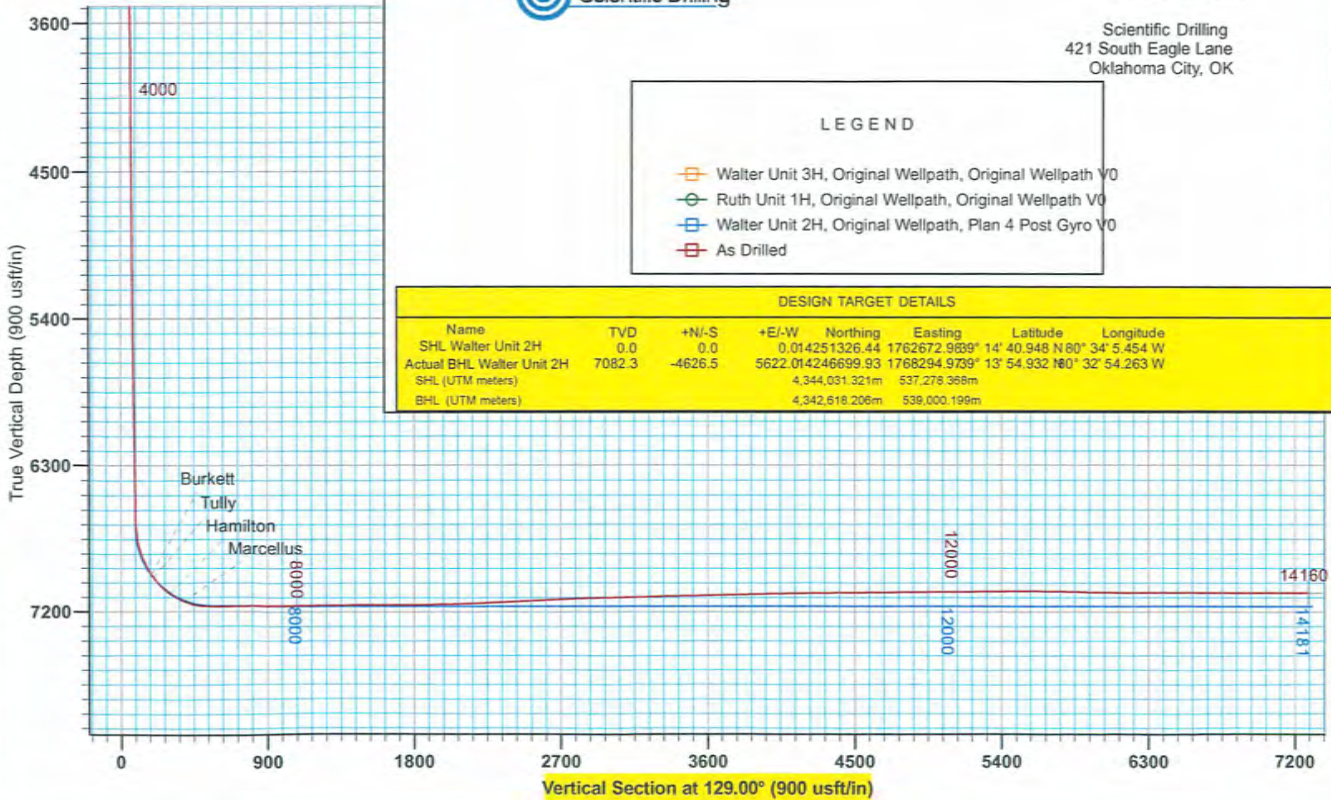
PROJECT DETAILS: Doddridge County WV	
Geodetic System:	Universal Transverse Mercator (US Survey Feet)
Datum:	NAD 1927 (NADCON CONUS)
Ellipsoid:	Clarke 1866
Zone:	Zone 17N (84 W to 78 W)
System Datum:	Mean Sea Level



Genie Lightfoot
 9:57, October 01 2013
 Scientific Drilling
 421 South Eagle Lane
 Oklahoma City, OK

LEGEND	
	Walter Unit 3H, Original Wellpath, Original Wellpath V0
	Ruth Unit 1H, Original Wellpath, Original Wellpath V0
	Walter Unit 2H, Original Wellpath, Plan 4 Post Gyro V0
	As Drilled

DESIGN TARGET DETAILS							
Name	TVD	+N/-S	+E/-W	Northing	Easting	Latitude	Longitude
SHL Walter Unit 2H	0.0	0.0	0.014251326.44	1762672.9839° 14' 40.948 N 80° 34' 5.454 W			
Actual BHL Walter Unit 2H	7082.3	-4626.5	5622.014246699.93	1768294.9739° 13' 54.932 N 80° 32' 54.263 W			
SHL (UTM meters)			4,344,031.321m	537,278.368m			
BHL (UTM meters)			4,342,618.206m	539,000.199m			



Azimuths to Grid North
 True North: -0.27°
 Magnetic North: -8.84°
 Magnetic Field
 Strength: 52398.1nT
 Dip Angle: 66.87°
 Date: 3/22/2013
 Model: IGRF2010

To convert Magnetic North to Grid, Subtract 8.84°
 To convert True North to Grid, Subtract 0.27°

