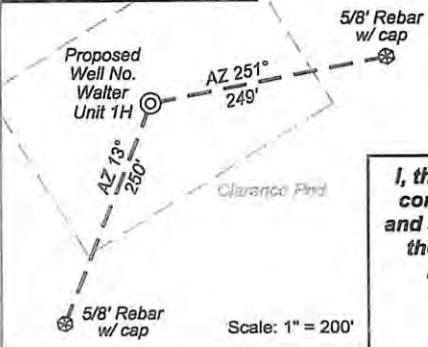


Antero Resources
Well No. Walter Unit 1H
Antero Resources Appalachian Corporation

Well Location References



(⊕) Denotes location of well on United States topographic maps

Top Hole
 7.5' Spot



Line	Bearing	Distance
L1	N 86°35' E	907.0'
L2	N 83°19' W	1217.1'
L3	S 51°50' W	794.8'
L4	N 62°57' W	1494.3'

I, the undersigned, hereby certify that this plat is correct to the best of my knowledge and belief and shows all the information required by law and the regulations issued and prescribed by the Department of Environmental Protection.

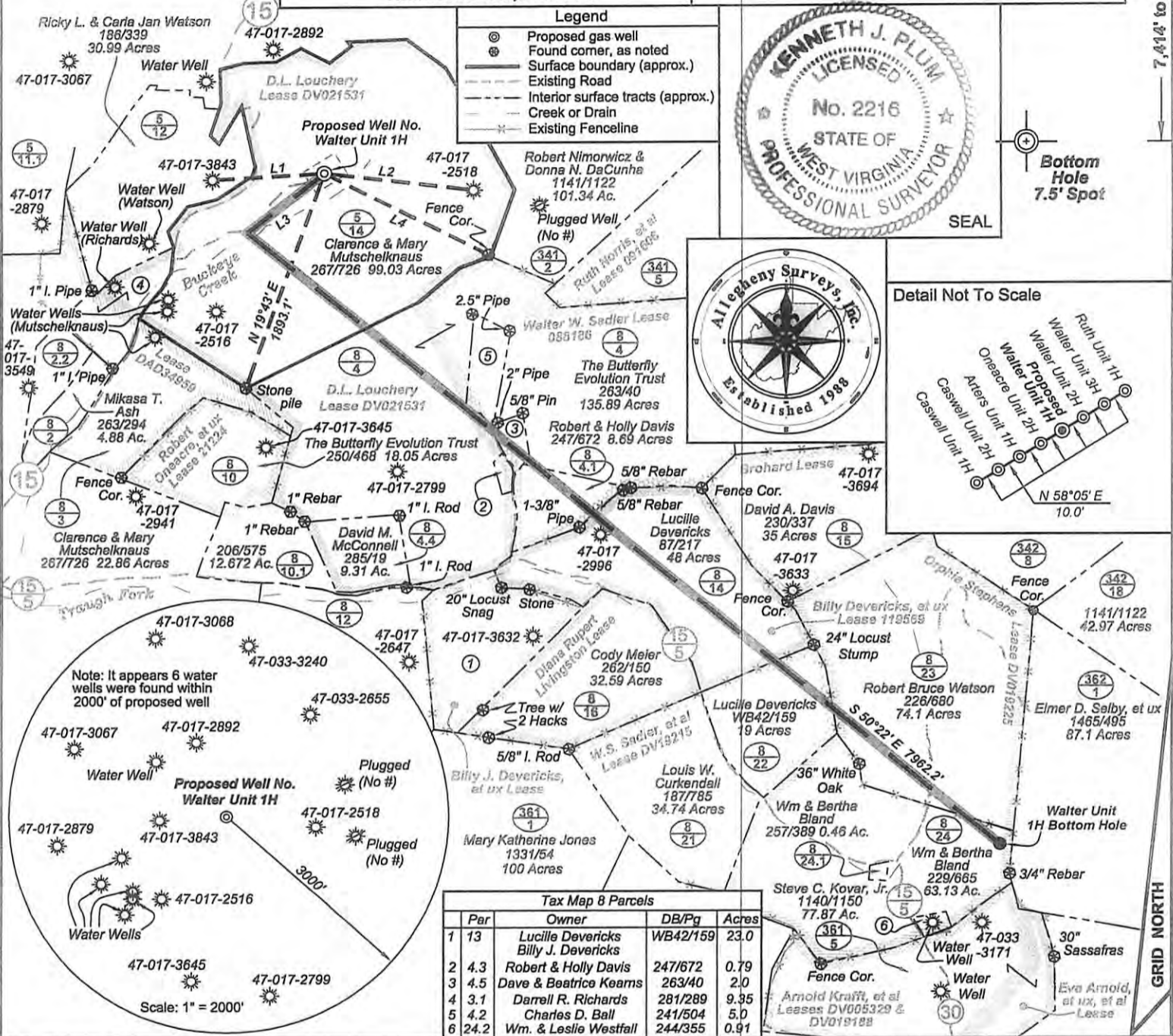
Kenneth J. Plum
Kenneth J. Plum, P.S. 2216

2,033' to Bottom Hole
LATITUDE 39 - 15 - 00

Notes:

West Virginia Coordinate System of 1927, North Zone based upon Differential GPS Measurements.
 Well No. Walter Unit 1H Top Hole coordinates are
 N: 273,030.94 Latitude: 39°14'40.89"
 E: 1,697,466.10 Longitude: 80°34'05.56"
 Bottom Hole coordinates are
 N: 267,461.31 Latitude: 39°13'46.49"
 E: 1,702,973.51 Longitude: 80°32'54.74"
UTM Zone 17, NAD 1983
 Top Hole Coordinates: Bottom Hole Coordinates:
 N: 4,344,029.666m N: 4,342,360.859m
 E: 537,275.809m E: 538,981.962m
 Plat orientation and corner and well references are based upon the grid north meridian.
 Well location references are based upon the magnetic meridian.

LONGITUDE 80 - 32 - 30
 1.845' to Top Hole
 7.414' to Bottom Hole



FILE NO: 131-30-G-12
 DRAWING NO: 131-12 Walter 1H Well
 SCALE: 1" = 1200'
 MINIMUM DEGREE OF ACCURACY:
 Submeter
 PROVEN SOURCE OF ELEVATION:
 WVDOT, Bridgeport, WV

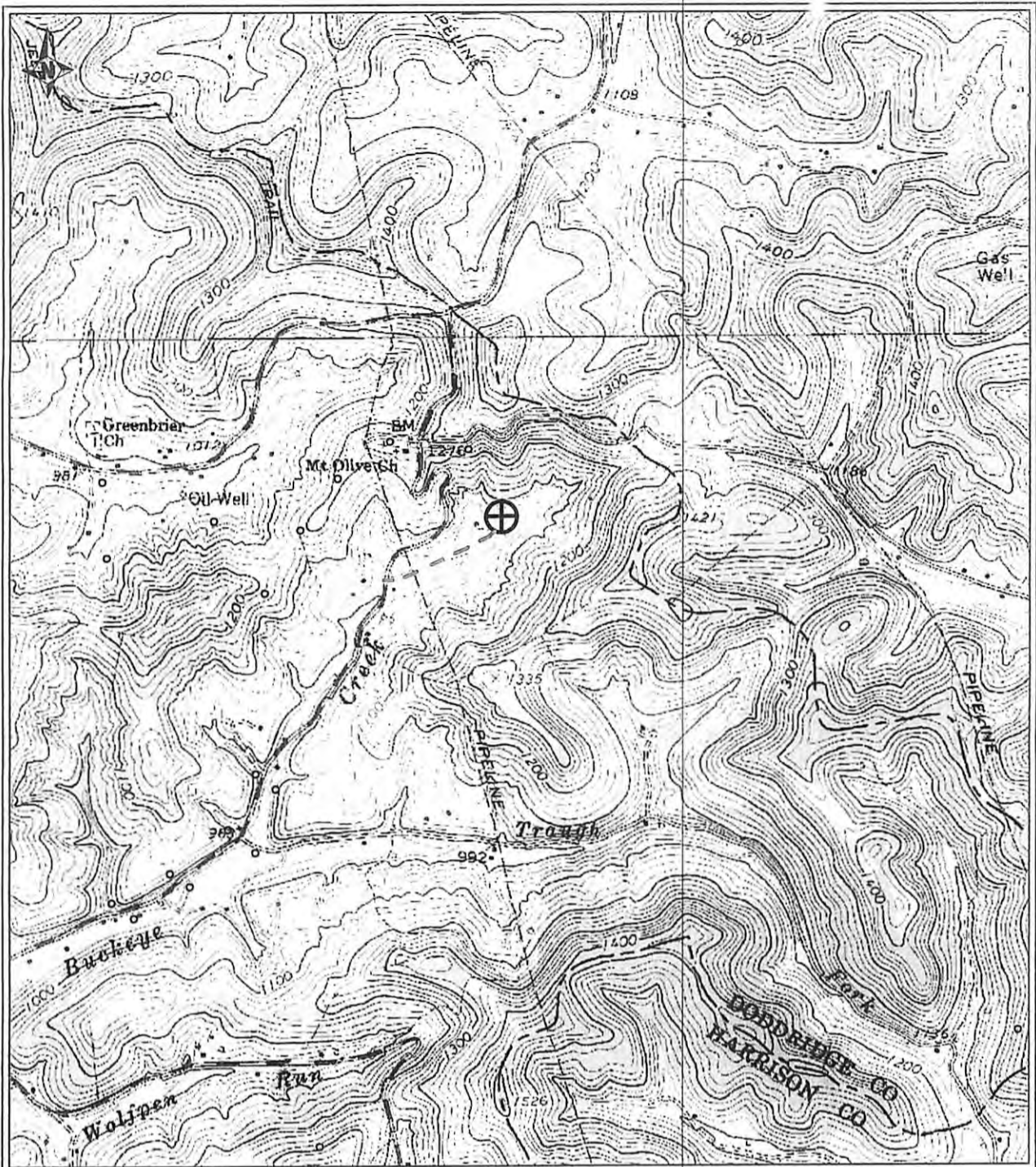
STATE OF WEST VIRGINIA
DEPARTMENT OF ENVIRONMENTAL PROTECTION
OFFICE OF OIL AND GAS

DATE: October 5 20 12
 OPERATOR'S WELL NO. Walter Unit 1H
 API WELL NO:
 47 - 017 - 06153
 STATE COUNTY PERMIT

WELL TYPE: OIL GAS LIQUID INJECTION WASTE DISPOSAL
 (IF GAS) PRODUCTION: STORAGE DEEP SHALLOW
 LOCATION: ELEVATION: 1050' WATERSHED: Buckeye Creek QUADRANGLE: Big Isaac
 DISTRICT: Greenbrier COUNTY: Doddridge
 SURFACE OWNER: Clarence & Mary Mutschelknaus ACREAGE: 99.03
 ROYALTY OWNER: D. L. Louchery; Walter W. Sadler; Billy Devericks, et ux LEASE NO: DV19215; DV019225 130
 PROPOSED WORK: DRILL CONVERT DRILL DEEPER FRACTURE OR STIMULATE PLUG OFF OLD FORMATION
 PERFORATE NEW FORMATION OTHER PHYSICAL CHANGE IN WELL (SPECIFY) TVD 7,400'
 PLUG AND ABANDON CLEAN OUT AND REPLUG TARGET FORMATION: Marcellus Shale ESTIMATED DEPTH: MD 15,750'

WELL OPERATOR: Antero Resources Appalachian Corporation DESIGNATED AGENT: Dianna Stamper - CT Corporation System
 ADDRESS: 1625 17th Street ADDRESS: 5400 D Big Tyler Road
 Denver, CO 80202 Charleston, WV 25313

01/11/2013



PETRA 7/6/2012 12:05:34 PM

OCT 18 2012

Antero Resources Corporation	
APPALACHIAN BASIN	
Walter Unit 1H	
Harrison County	
REMARKS QUADRANGLE: BIG ISAAC WATERSHED: BUCKEYE CREEK DISTRICT: GREENBRIER	
By: ECM	
July 6, 2012	