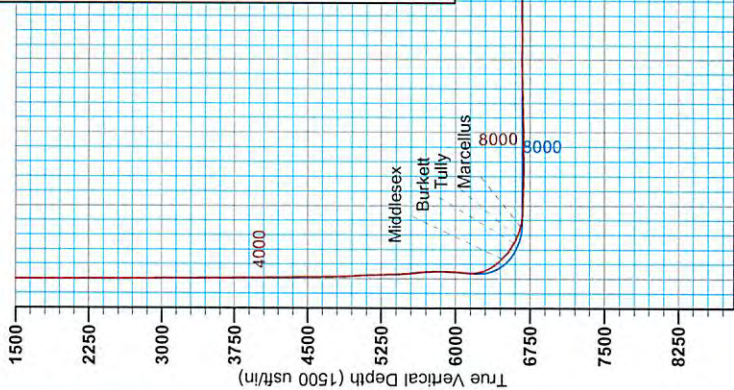




Antero Resources
 Piggott Unit 2H
 Doddridge County WV
 Northing: 14270981.58
 Easting: 1688829.26
 As Drilled



WELL DETAILS: Piggott Unit 2H

Ground Level: 1148.0
 Slat

Longitude 80° 49' 43.932" W
 Latitude 39° 17' 57.722" N

Easting 1688829.26
 Northing 14270981.58

+N/-S +E/-W 0.0 0.0

REFERENCE INFORMATION

Coordinate (N/E) Reference: West Piggott Unit 2H, Grid North
 Section 103 Reference: Slat 4.0 DN, 5.0 SEC, 100' x 10' NAD 83 @ 1194.0 out
 Measurement Method: Minimum Grubstake
 Calculation Method: Minimum Grubstake

PROJECT DETAILS: Doddridge County WV

Geologic System: Utica/Tennessee Member (US Survey Feet)
 Datum: NAD 1983 (NAD83 CONUS)
 Ellipsoid: Clarke 1866
 Zone: Zone 17N (84 W to 78 W)
 System Datum: Mean Sea Level

Genie Lightfoot
 10:00, February 11 2014
 Scientific Drilling
 421 South Eagle Lane
 Oklahoma City, OK



- LEGEND**
- ▲ Piggott Unit 1H, Original Wellpath, As Drilled V0
 - Piggott Unit 2H, Original Wellpath, Plan 6 V0
 - Valentine Unit 1H, Original Wellpath, As Drilled V0
 - ✕ Doison Unit 2H, Original Wellpath, As Drilled V0
 - △ Doison Unit 2H, Sidetrack 1 Wellpath, As Drilled V0
 - ⊕ Central Unit 2H, Original Wellpath, As Drilled V0
 - ◇ Valentine Unit 2H, Original Wellpath, As Drilled V0
 - Doison Unit 1H, Original Wellpath, As Drilled V0
 - ▣ As Drilled

DESIGN TARGET DETAILS

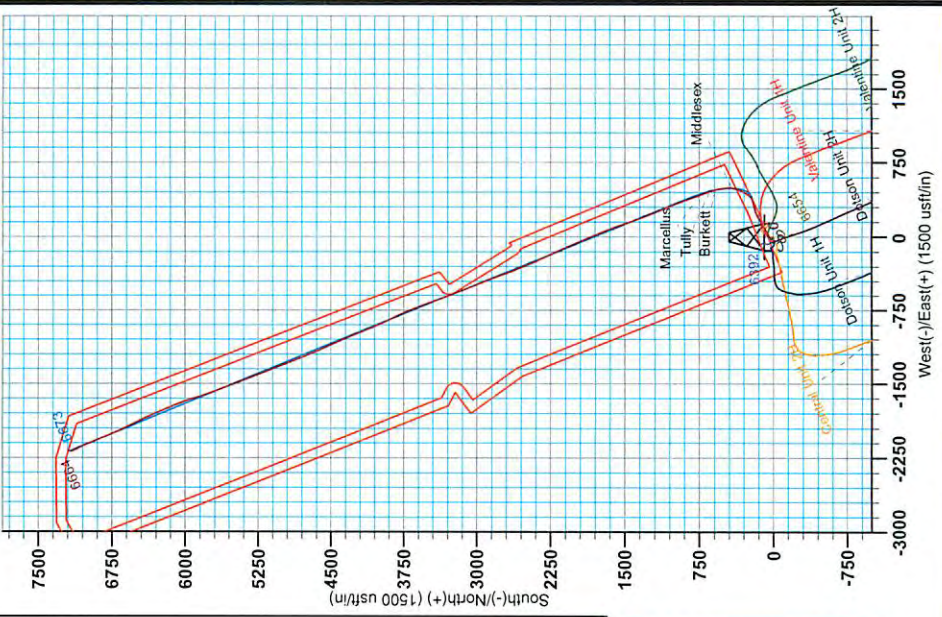
Name	TVD	+N/-S	+E/-W	Northing	Easting	Latitude	Longitude
SHL Piggott Unit 2H	0.0	0.0	0.0	14270981.58	1688829.26	39° 17' 57.722" N	80° 49' 43.932" W
Actual BHI Piggott Unit 2H	6663.8	7169.2	-2188.2	14278150.77	1686641.10	39° 19' 8.648" N	80° 50' 11.612" W

Vertical Section at 337.87° (1500 usf/in)

To convert Magnetic North to Grid, Subtract 8.52°
 To convert True North to Grid, Subtract 0.11°

Azimuths to Grid North
 for Grid North: -8.52°
 Magnetic North: -8.52°

Magnetic Field
 Strength: 52393.3art
 Dip Angle: 66.89°
 Date: 9/24/2013
 Model: IGRF2010



06/05/2015

MAY 26 2015

Office of Oil and Gas
 WV Department of
 Environmental Protection



Antero Resources

Doddridge County WV
Valentine/Dotson/Piggott/Shale Pad
Piggott Unit 2H
Original Wellpath

Design: As Drilled

EOW Completion Report

11 February, 2014

RECEIVED
Office of Oil and Gas

MAY 26 2015



WV Department of
Environmental Protection

Scientific Drilling

06/05/2015



EOW Completion Report



Company:	Antero Resources	Local Co-ordinate Reference:	Well Piggott Unit 2H
Project:	Doddridge County WV	TVD Reference:	Piggott Unit 2H GL 1146' + 18' RKB @ 1164.0usft
Site:	Valentine/Dotson/Piggott/Shale Pad	MD Reference:	Piggott Unit 2H GL 1146' + 18' RKB @ 1164.0usft
Well:	Piggott Unit 2H	North Reference:	Grid
Wellbore:	Original Wellpath	Survey Calculation Method:	Minimum Curvature
Design:	As Drilled	Database:	Oklahoma District

Project	Doddridge County WV, McClellan District		
Map System:	Universal Transverse Mercator (US Survey Fee	System Datum:	Mean Sea Level
Geo Datum:	NAD 1927 (NADCON CONUS)		
Map Zone:	Zone 17N (84 W to 78 W)		

Site	Valentine/Dotson/Piggott/Shale Pad				
Site Position:		Northing:	14,270,970.12 usft	Latitude:	39° 17' 57.609 N
From:	Map	Easting:	1,688,801.46 usft	Longitude:	80° 49' 44.286 W
Position Uncertainty:	2.0 usft	Slot Radius:	13-3/16"	Grid Convergence:	0.11 °

Well	Piggott Unit 2H					
Well Position	+N/-S	0.0 usft	Northing:	14,270,981.58 usft	Latitude:	39° 17' 57.722 N
	+E/-W	0.0 usft	Easting:	1,688,829.26 usft	Longitude:	80° 49' 43.932 W
Position Uncertainty	2.0 usft		Wellhead Elevation:	1,164.0 usft	Ground Level:	1,146.0 usft

Wellbore	Original Wellpath				
-----------------	-------------------	--	--	--	--

Magnetics	Model Name	Sample Date	Declination (°)	Dip Angle (°)	Field Strength (nT)
	IGRF2010	9/24/2013	-8.41	66.89	52,393

Design	As Drilled				
---------------	------------	--	--	--	--

Audit Notes:					
Version:	1.0	Phase:	ACTUAL	Tie On Depth:	0.0
Vertical Section:	Depth From (TVD) (usft)	+N/-S (usft)	+E/-W (usft)	Direction (°)	
	0.0	0.0	0.0	337.87	

Survey Program	Date 2/11/2014				
From (usft)	To (usft)	Survey (Wellbore)	Tool Name	Description	
105.0	4,744.1	Survey #4 Def Gyro to KOP (Original Well	SDI Standard Keeper	Scientific Drilling Intl. Standard Wireline Keeper	
4,744.1	6,120.4	Survey #5 Final Gyro (Original Wellpath)	SDI Standard Keeper	Scientific Drilling Intl. Standard Wireline Keeper	
6,200.0	13,965.0	Survey #6 MWD (Original Wellpath)	MWD SDI	MWD - Standard ver 1.0.1	

Survey									
MD (usft)	Inc (°)	Azi (azimuth) (°)	TVD (usft)	N/S (usft)	E/W (usft)	V. Sec (usft)	DLeg (°/100usft)		
0.0	0.00	0.00	0.0	0.0	0.0	0.0	0.0	0.00	
105.0	0.12	88.07	105.0	0.0	0.1	0.0	0.11	0.11	
205.0	0.12	141.33	205.0	-0.1	0.3	-0.2	0.11	0.11	
305.0	0.12	84.55	305.0	-0.1	0.4	-0.3	0.11	0.11	
405.0	0.09	104.43	405.0	-0.2	0.6	-0.4	0.05	0.05	
505.0	0.18	77.23	505.0	-0.1	0.9	-0.5	0.11	0.11	
605.0	0.13	87.56	605.0	-0.1	1.1	-0.5	0.06	0.06	
705.0	0.13	93.96	705.0	-0.1	1.4	-0.6	0.01	0.01	
805.0	0.08	103.70	805.0	-0.1	1.5	-0.7	0.05	0.05	
905.0	0.12	120.82	905.0	-0.2	1.7	-0.8	0.05	0.05	

RECEIVED
Office of Oil and Gas
MAY 26 2015
WV Department of
Environmental Protection



EOW Completion Report



Company:	Antero Resources	Local Co-ordinate Reference:	Well Piggott Unit 2H
Project:	Doddridge County WV	TVD Reference:	Piggott Unit 2H GL 1146' + 18' RKB @ 1164.0usft
Site:	Valentine/Dotson/Piggott/Shale Pad	MD Reference:	Piggott Unit 2H GL 1146' + 18' RKB @ 1164.0usft
Well:	Piggott Unit 2H	North Reference:	Grid
Wellbore:	Original Wellpath	Survey Calculation Method:	Minimum Curvature
Design:	As Drilled	Database:	Oklahoma District

Survey

MD (usft)	Inc (°)	Azi (azimuth) (°)	TVD (usft)	N/S (usft)	E/W (usft)	V. Sec (usft)	DLeg (°/100usft)
1,005.0	0.09	153.85	1,005.0	-0.3	1.8	-1.0	0.07
1,105.0	0.04	166.20	1,105.0	-0.4	1.9	-1.1	0.05
1,205.0	0.10	207.69	1,205.0	-0.5	1.8	-1.2	0.07
1,305.0	0.03	142.88	1,305.0	-0.6	1.8	-1.3	0.09
1,405.0	0.11	230.01	1,405.0	-0.7	1.7	-1.3	0.11
1,505.0	0.21	200.25	1,505.0	-1.0	1.6	-1.5	0.13
1,605.0	0.14	205.05	1,605.0	-1.2	1.5	-1.7	0.07
1,705.0	0.28	232.09	1,705.0	-1.5	1.2	-1.9	0.17
1,805.0	0.10	221.39	1,805.0	-1.7	1.0	-2.0	0.18
1,905.0	0.02	272.75	1,905.0	-1.8	0.9	-2.0	0.09
2,005.0	0.38	230.17	2,005.0	-2.0	0.6	-2.1	0.37
2,105.0	0.08	36.09	2,105.0	-2.1	0.4	-2.2	0.46
2,205.0	0.10	330.65	2,205.0	-2.0	0.4	-2.0	0.10
2,305.0	0.08	330.84	2,305.0	-1.9	0.4	-1.9	0.02
2,405.0	0.21	7.57	2,405.0	-1.6	0.3	-1.6	0.15
2,505.0	0.24	2.23	2,505.0	-1.2	0.4	-1.3	0.04
2,605.0	0.27	341.92	2,605.0	-0.8	0.3	-0.9	0.09
2,705.0	0.41	315.98	2,705.0	-0.3	0.0	-0.3	0.20
2,805.0	0.61	315.22	2,805.0	0.3	-0.6	0.5	0.20
2,905.0	0.65	314.74	2,905.0	1.1	-1.4	0.5	0.04
3,005.0	0.62	311.01	3,005.0	1.8	-2.2	2.5	0.05
3,105.0	0.54	315.13	3,105.0	2.5	-3.0	3.5	0.09
3,205.0	0.48	316.85	3,205.0	3.2	-3.6	4.3	0.06
3,305.0	0.50	317.67	3,305.0	3.8	-4.2	5.1	0.02
3,405.0	0.50	319.92	3,405.0	4.5	-4.7	5.9	0.02
3,505.0	0.57	330.23	3,505.0	5.2	-5.3	6.8	0.12
3,605.0	0.69	324.89	3,604.9	6.1	-5.9	7.9	0.12
3,705.0	0.53	331.05	3,704.9	7.0	-6.4	8.9	0.17
3,805.0	0.70	326.28	3,804.9	8.0	-7.0	10.0	0.18
3,905.0	0.60	333.04	3,904.9	8.9	-7.6	11.1	0.13
4,005.0	0.54	337.87	4,004.9	9.8	-8.0	12.1	0.08
4,105.0	0.38	335.12	4,104.9	10.6	-8.3	12.9	0.16
4,205.0	0.44	357.16	4,204.9	11.3	-8.5	13.6	0.17
4,305.0	0.51	3.82	4,304.9	12.1	-8.4	14.4	0.09
4,405.0	0.66	13.70	4,404.9	13.1	-8.3	15.2	0.18
4,505.0	0.69	5.43	4,504.9	14.2	-8.1	16.2	0.10
4,605.0	0.67	10.91	4,604.9	15.4	-7.9	17.3	0.07
4,705.0	0.85	14.60	4,704.9	16.7	-7.6	18.3	0.19
4,744.1	0.80	14.43	4,744.0	17.3	-7.5	18.8	0.13
4,798.0	1.69	24.19	4,797.9	18.3	-7.1	19.7	1.69
4,893.0	5.47	30.07	4,892.7	23.5	-4.2	23.4	3.99
4,988.0	7.69	41.86	4,987.0	32.2	2.3	29.0	2.72
5,083.0	9.73	53.52	5,080.9	41.7	13.0	33.7	2.83
5,178.0	12.65	57.72	5,174.1	52.0	28.2	37.6	3.19
5,266.0	14.35	59.36	5,259.7	62.7	45.8	40.9	1.98

RECEIVED
Office of Oil and Gas
MAY 26 2015
WV Department of
Environmental Protection

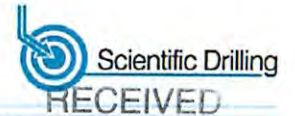
Company:	Antero Resources	Local Co-ordinate Reference:	Well Piggott Unit 2H
Project:	Doddridge County WV	TVD Reference:	Piggott Unit 2H GL 1146' + 18' RKB @ 1164.0usft
Site:	Valentine/Dotson/Piggott/Shale Pad	MD Reference:	Piggott Unit 2H GL 1146' + 18' RKB @ 1164.0usft
Well:	Piggott Unit 2H	North Reference:	Grid
Wellbore:	Original Wellpath	Survey Calculation Method:	Minimum Curvature
Design:	As Drilled	Database:	Oklahoma District

RECEIVED
Office of Oil and Gas
MAY 26 2015

MD (usft)	Inc (°)	Azi (azimuth) (°)	TVD (usft)	N/S (usft)	E/W (usft)	WV Dept of Environmental Protection (usft)	D Leg (usft)
5,361.0	16.71	64.04	5,351.2	74.7	68.2	43.5	2.81
5,456.0	19.99	58.49	5,441.4	89.2	94.3	47.1	3.91
5,551.0	22.77	53.84	5,529.9	108.5	123.0	54.2	3.43
5,646.0	23.88	55.58	5,617.1	130.2	153.7	62.7	1.38
5,741.0	21.82	59.16	5,704.6	150.2	184.7	69.5	2.62
5,836.0	23.08	63.98	5,792.4	167.4	216.6	73.4	2.35
5,930.0	22.38	71.81	5,879.2	181.1	250.2	73.5	3.30
6,025.0	22.99	74.24	5,966.8	191.7	285.2	70.2	1.18
6,105.0	25.07	77.76	6,039.9	199.6	316.9	65.5	3.16
6,120.4	25.44	78.07	6,053.8	201.0	323.3	64.4	2.55
6,208.0	25.62	76.24	6,132.9	209.4	360.1	58.3	0.92
6,239.0	25.98	70.79	6,160.8	213.2	373.0	57.0	7.74
6,269.0	27.16	61.02	6,187.6	218.7	385.2	57.4	15.07
6,300.0	29.03	51.40	6,215.0	226.8	397.3	60.4	15.79
6,331.0	31.31	44.16	6,241.8	237.3	408.8	65.8	13.84
6,362.0	33.54	39.02	6,267.9	249.7	419.8	73.2	11.43
6,393.0	35.69	34.86	6,293.5	263.8	430.3	82.2	10.30
6,424.0	38.10	31.02	6,318.3	279.4	440.4	92.9	10.76
6,455.0	40.21	27.67	6,342.3	296.5	450.0	105.1	9.64
6,485.0	42.09	24.35	6,364.9	314.2	458.7	118.3	9.61
6,516.0	43.80	21.33	6,387.6	333.7	466.9	133.2	8.63
6,547.0	45.38	18.77	6,409.7	354.1	474.3	149.3	7.72
6,578.0	47.14	15.81	6,431.1	375.5	481.0	166.6	8.93
6,609.0	48.93	11.62	6,451.8	397.9	486.4	185.3	11.59
6,639.0	50.20	7.95	6,471.3	420.4	490.3	204.7	10.22
Middlesex							
6,640.0	50.24	7.83	6,471.9	421.1	490.4	205.4	10.22
6,671.0	51.65	2.96	6,491.5	445.1	492.6	226.7	13.02
6,702.0	53.00	358.60	6,510.4	469.6	493.0	249.3	11.95
6,733.0	54.01	354.75	6,528.9	494.5	491.5	272.9	10.50
6,763.0	55.75	350.83	6,546.1	518.8	488.4	296.6	12.16
6,794.0	57.81	347.74	6,563.1	544.3	483.6	322.0	10.66
6,825.0	60.07	345.51	6,579.1	570.1	477.5	348.3	9.55
6,849.0	61.67	343.58	6,590.8	590.3	471.9	369.1	9.68
Burkett							
6,856.0	62.14	343.03	6,594.1	596.2	470.1	375.2	9.68
6,887.0	64.45	342.65	6,608.0	622.7	461.9	402.8	7.53
6,918.0	67.11	341.72	6,620.7	649.6	453.3	431.0	9.01
Tully							
6,949.0	69.55	341.01	6,632.2	676.9	444.1	459.8	8.15
6,980.0	71.96	340.23	6,642.4	704.5	434.3	489.0	8.13
7,010.0	74.44	340.04	6,651.1	731.5	424.6	517.7	8.29
7,029.0	76.06	340.03	6,655.9	748.8	418.3	536.0	8.52
Marcellus							
7,041.0	77.08	340.03	6,658.7	759.8	414.3	547.7	8.52



EOW Completion Report



RECEIVED

Company: Antero Resources	Local Co-ordinate Reference: Well Piggott Unit 2H
Project: Doddridge County WV	TVD Reference: Piggott Unit 2H GL 1146' + 18' RKB @ 1164.0usft
Site: Valentine/Dotson/Piggott/Shale Pad	MD Reference: Piggott Unit 2H GL 1146' + 18' RKB @ 1164.0usft
Well: Piggott Unit 2H	North Reference: Grid
Wellbore: Original Wellpath	Survey Calculation Method: Minimum Curvature
Design: As Drilled	Database: Oklahoma District

MAY 26 2015

Office of Oil and Gas
WV Department of Environmental Protection

Survey

MD (usft)	Inc (°)	Azi (azimuth) (°)	TVD (usft)	N/S (usft)	E/W (usft)	V. Sec (usft)	DLeg (°/100usft)
7,072.0	78.78	340.17	6,665.2	788.3	404.0	578.0	5.50
7,102.0	80.82	339.84	6,670.5	816.0	393.9	607.5	6.89
7,134.0	84.21	340.17	6,674.7	845.8	383.1	639.2	10.64
7,192.0	89.69	339.61	6,677.7	900.2	363.2	697.1	9.50
7,285.0	88.29	338.64	6,679.4	987.1	330.0	790.0	1.83
7,377.0	87.85	338.12	6,682.5	1,072.5	296.2	882.0	0.74
7,470.0	88.20	336.80	6,685.7	1,158.4	260.5	974.9	1.47
7,562.0	88.72	337.41	6,688.2	1,243.1	224.7	1,066.9	0.87
7,655.0	89.78	339.00	6,689.4	1,329.4	190.2	1,159.8	2.05
7,748.0	90.40	340.84	6,689.2	1,416.8	158.3	1,252.8	2.09
7,840.0	91.45	341.54	6,687.7	1,503.9	128.6	1,344.6	1.37
7,933.0	91.19	339.96	6,685.6	1,591.6	98.0	1,437.5	1.72
8,026.0	90.84	337.06	6,683.9	1,678.1	63.9	1,530.4	3.14
8,120.0	90.75	337.68	6,682.6	1,764.9	27.8	1,624.4	0.67
8,215.0	91.19	340.05	6,681.0	1,853.5	-6.5	1,719.4	2.54
8,310.0	90.04	336.45	6,680.0	1,941.7	-41.7	1,814.4	3.98
8,405.0	91.45	337.77	6,678.8	2,029.2	-78.6	1,909.3	2.03
8,499.0	91.89	335.22	6,676.0	2,115.4	-116.1	2,003.3	2.75
8,594.0	91.80	335.22	6,673.0	2,201.6	-155.9	2,098.1	0.09
8,689.0	91.28	334.69	6,670.4	2,287.6	-196.1	2,193.0	0.78
8,784.0	88.02	334.78	6,671.0	2,373.5	-236.6	2,287.8	3.43
8,879.0	88.90	337.77	6,673.6	2,460.4	-274.8	2,382.7	3.28
8,973.0	90.04	338.12	6,674.4	2,547.6	-310.1	2,476.7	1.27
9,068.0	91.28	337.59	6,673.3	2,635.5	-345.9	2,571.7	1.42
9,163.0	90.48	339.26	6,671.9	2,723.9	-380.9	2,666.7	1.95
9,256.0	90.22	339.52	6,671.3	2,810.9	-413.6	2,759.7	0.40
9,348.0	89.60	338.73	6,671.5	2,896.9	-446.4	2,851.6	1.09
9,441.0	90.84	338.47	6,671.1	2,983.5	-480.3	2,944.6	1.36
9,534.0	90.92	337.68	6,669.7	3,069.7	-515.0	3,037.6	0.85
9,626.0	91.54	337.50	6,667.7	3,154.8	-550.1	3,129.6	0.70
9,719.0	90.48	340.05	6,666.1	3,241.4	-583.8	3,222.6	2.97
9,811.0	90.04	339.96	6,665.6	3,327.9	-615.2	3,314.5	0.49
9,904.0	89.78	339.00	6,665.8	3,415.0	-647.8	3,407.4	1.07
9,996.0	90.48	340.14	6,665.6	3,501.2	-679.9	3,499.4	1.45
10,089.0	90.40	337.59	6,664.9	3,587.9	-713.5	3,592.4	2.74
10,182.0	90.22	339.26	6,664.4	3,674.4	-747.7	3,685.4	1.81
10,274.0	90.57	336.71	6,663.7	3,759.7	-782.1	3,777.4	2.80
10,367.0	88.72	333.19	6,664.3	3,843.9	-821.5	3,870.2	4.28
10,460.0	90.22	335.04	6,665.2	3,927.6	-862.1	3,963.0	2.56
10,552.0	91.19	334.78	6,664.0	4,010.9	-901.1	4,054.9	1.09
10,645.0	89.25	338.20	6,663.7	4,096.2	-938.2	4,147.8	4.23
10,737.0	90.10	337.98	6,664.2	4,181.5	-972.5	4,239.8	0.95
10,830.0	90.84	337.85	6,663.4	4,267.7	-1,007.5	4,332.8	0.81
10,922.0	91.10	336.71	6,661.9	4,352.5	-1,043.0	4,424.8	1.27



EOW Completion Report



Office of Oil and Gas

MAY 26 2015

WV Department of Environmental Protection

Company: Antero Resources
Project: Doddridge County WV
Site: Valentine/Dotson/Piggott/Shale Pad
Well: Piggott Unit 2H
Wellbore: Original Wellpath
Design: As Drilled

Local Co-ordinate Reference: Well Piggott Unit 2H
TVD Reference: Piggott Unit 2H GL 1146' + 18' RKB @ 1164.0usft
MD Reference: Piggott Unit 2H GL 1146' + 18' RKB @ 1164.0usft
North Reference: Grid
Survey Calculation Method: Minimum Curvature
Database: Oklahoma District

Survey

MD (usft)	Inc (°)	Azi (azimuth) (°)	TVD (usft)	N/S (usft)	E/W (usft)	V. Sec (usft)	DLeg (°/100usft)
11,015.0	91.10	334.60	6,660.1	4,437.2	-1,081.4	4,517.7	2.27
11,108.0	90.57	336.45	6,658.7	4,521.9	-1,119.9	4,610.6	2.07
11,200.0	90.66	336.27	6,657.7	4,606.1	-1,156.8	4,702.6	0.22
11,297.0	90.04	338.03	6,657.1	4,695.5	-1,194.4	4,799.6	1.92
11,389.0	89.87	340.05	6,657.2	4,781.4	-1,227.3	4,891.5	2.20
11,482.0	89.96	338.20	6,657.4	4,868.3	-1,260.5	4,984.5	1.99
11,575.0	90.31	338.29	6,657.1	4,954.7	-1,295.0	5,077.5	0.39
11,667.0	89.43	338.56	6,657.3	5,040.3	-1,328.8	5,169.5	1.00
11,760.0	90.13	338.47	6,657.7	5,126.8	-1,362.8	5,262.5	0.76
11,853.0	89.60	338.12	6,657.9	5,213.2	-1,397.2	5,355.5	0.68
11,945.0	90.40	340.49	6,657.9	5,299.3	-1,429.7	5,447.5	2.72
12,038.0	89.16	339.70	6,658.3	5,386.7	-1,461.4	5,540.4	1.58
12,131.0	89.16	339.44	6,659.6	5,473.8	-1,493.9	5,633.3	0.28
12,223.0	89.34	339.26	6,660.9	5,559.9	-1,526.3	5,725.3	0.28
12,316.0	89.78	338.47	6,661.6	5,646.7	-1,559.8	5,818.3	0.97
12,409.0	90.04	340.67	6,661.7	5,733.8	-1,592.3	5,911.2	2.38
12,501.0	88.72	341.63	6,662.7	5,820.9	-1,622.0	6,003.1	1.77
12,594.0	89.69	343.65	6,664.0	5,909.6	-1,649.8	6,095.7	2.41
12,686.0	87.76	340.31	6,666.0	5,997.1	-1,678.2	6,187.5	4.19
12,779.0	87.76	338.12	6,669.7	6,083.9	-1,711.2	6,280.4	2.35
12,872.0	91.36	338.91	6,670.4	6,170.5	-1,745.2	6,373.3	3.96
12,965.0	90.48	337.41	6,668.9	6,256.8	-1,779.8	6,466.3	1.87
13,057.0	89.96	334.78	6,668.5	6,340.9	-1,817.1	6,558.3	2.91
13,150.0	90.40	335.39	6,668.3	6,425.2	-1,856.3	6,651.2	0.81
13,243.0	89.87	333.72	6,668.0	6,509.2	-1,896.2	6,744.0	1.88
13,335.0	91.71	333.46	6,666.8	6,591.6	-1,937.2	6,835.7	2.02
13,428.0	91.80	336.62	6,663.9	6,675.8	-1,976.4	6,928.6	3.40
13,520.0	90.48	337.50	6,662.1	6,760.5	-2,012.2	7,020.5	1.72
13,613.0	90.84	338.12	6,661.0	6,846.6	-2,047.4	7,113.5	0.77
13,706.0	87.85	335.92	6,662.1	6,932.2	-2,083.7	7,206.5	3.99
13,798.0	89.43	336.53	6,664.3	7,016.4	-2,120.7	7,298.4	1.84
13,891.0	90.44	335.77	6,664.4	7,101.5	-2,158.3	7,391.4	1.36
13,904.0	90.48	336.27	6,664.3	7,113.3	-2,163.6	7,404.4	3.86
13,965.0	90.48	336.27	6,663.8	7,169.2	-2,188.2	7,465.3	0.00



Company:	Antero Resources	Local Co-ordinate Reference:	Well Piggott Unit 2H
Project:	Doddridge County WV	TVD Reference:	Piggott Unit 2H GL 1146' + 18' RKB @ 1164.0usft
Site:	Valentine/Dotson/Piggott/Shale Pad	MD Reference:	Piggott Unit 2H GL 1146' + 18' RKB @ 1164.0usft
Well:	Piggott Unit 2H	North Reference:	Grid
Wellbore:	Original Wellpath	Survey Calculation Method:	Minimum Curvature
Design:	As Drilled	Database:	Oklahoma District

Design Annotations

Measured Depth (usft)	Vertical Depth (usft)	Local Coordinates		Comment
		+N/-S (usft)	+E/-W (usft)	
6,639.0	6,471.3	420.4	490.3	Middlesex
6,849.0	6,590.8	590.3	471.9	Burkett
6,918.0	6,620.7	649.6	453.3	Tully
7,029.0	6,655.9	748.8	418.3	Marcellus

Checked By: _____ Approved By: _____ Date: _____

RECEIVED
Office of Oil and Gas

MAY 26 2015

WV Department of
Environmental Protection