

Legend

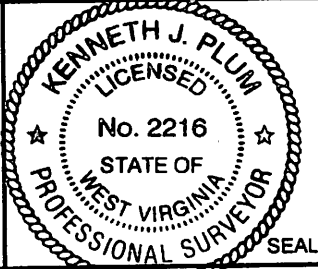
- ⊙ Proposed gas well
- ⊗ Found corner, as noted
- Creek or Drain
- Existing Road
- Surface boundary (approx.)
- Interior surface tracts (approx.)
- County Line (approx.)
- Existing Fenceline

Notes:
 West Virginia Coordinate System of 1927, North Zone based upon Differential GPS Measurements.
 Well No. Furbey Unit 2H Top Hole coordinates are
 N: 256,685.61" Latitude: 39°12'00.49"
 E: 1,707,351.48" Longitude: 80°31'57.53"
 Bottom Hole coordinates are
 N: 250,398.91" Latitude: 39°10'58.60"
 E: 1,709,536.87" Longitude: 80°31'28.86"
 UTM Zone 17, NAD 1983
 Top Hole Coordinates Bottom Hole Coordinates
 N: 4,339,100.268m N: 4,337,196.119m
 E: 540,370.452m E: 541,068.157m
 Plat orientation and corner and well references are based upon the grid north meridian.
 Well location references are based upon the magnetic meridian.



I, the undersigned, hereby certify that this plat is correct to the best of my knowledge and belief and shows all the information required by law and the regulations issued and prescribed by the Department of Environmental Protection.

Kenneth J. Plum
 Kenneth J. Plum, P.S. 2216

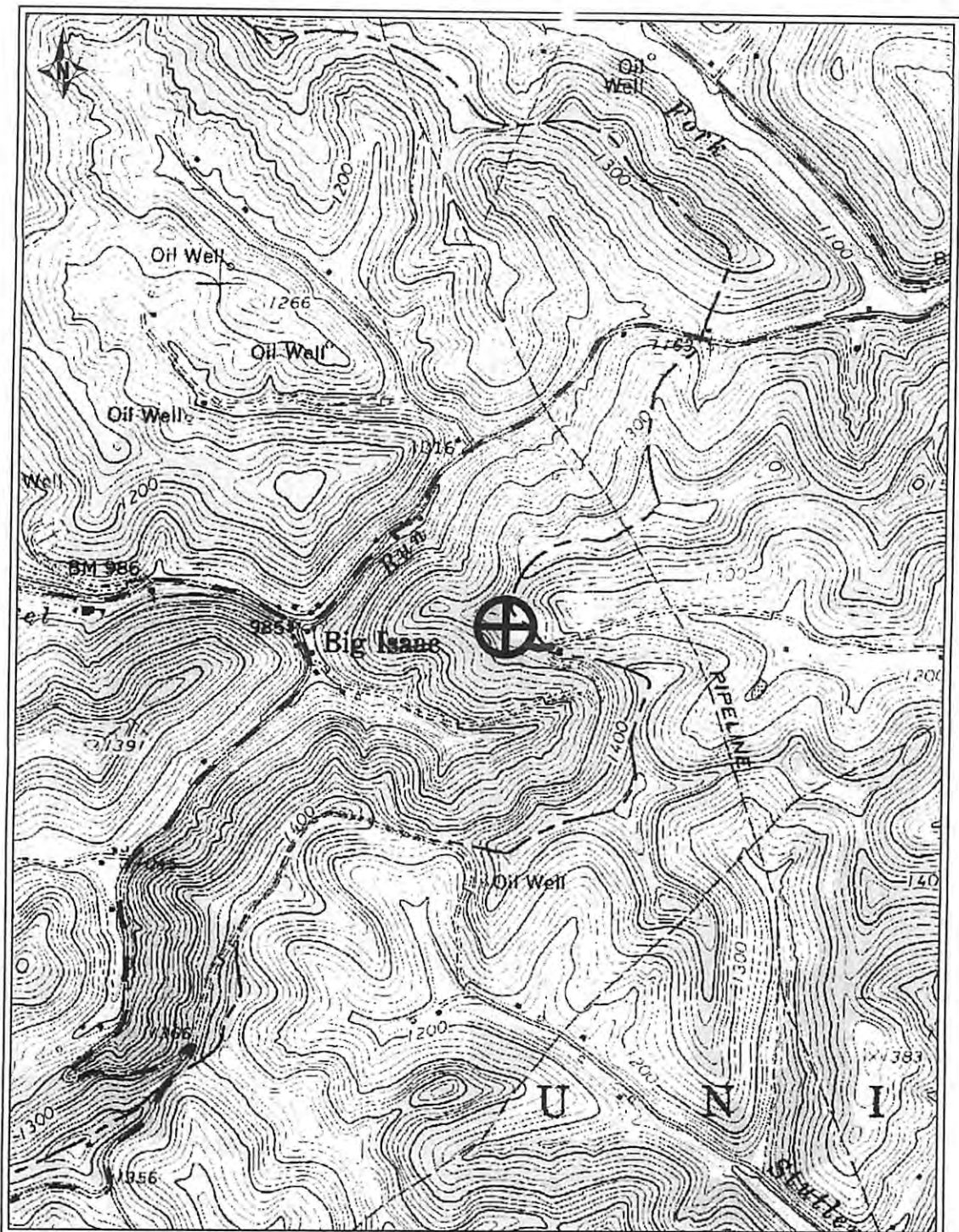


FILE NO: 187-36-U-12
 DRAWING NO: 187-12 Furbey 2H Well Plat
 SCALE: 1" = 1000'
 MINIMUM DEGREE OF ACCURACY: Submeter
 PROVEN SOURCE OF ELEVATION: WVDOT, Bridgeport, WV

STATE OF WEST VIRGINIA
 DEPARTMENT OF ENVIRONMENTAL PROTECTION
OIL AND GAS DIVISION

DATE: August 24 20 12
 OPERATOR'S WELL NO. Furbey Unit 2H
 API WELL NO
 47 - 017 - 6155 AC 4
 STATE COUNTY PERMIT

WELL TYPE: OIL GAS LIQUID INJECTION WASTE DISPOSAL
 (IF GAS) PRODUCTION: STORAGE DEEP SHALLOW
 LOCATION: ELEVATION: 1358' WATERSHED: Laurel Run of Meathouse Fork QUADRANGLE: Big Isaac
 DISTRICT: Greenbrier COUNTY: Doddridge
 SURFACE OWNER: Linn A. Reed, et al Burnice M. Life, et al; East Resources, Inc. DV011222 & DAD88153/001; ACREAGE: 189.72 0.448; 53; 36; Dominion Transmission Inc.; F.C. Currey, et ux, et al; 008889; DAD86080; 009844;
 ROYALTY OWNER: Clarence A. Moore; A.J. Furbey; A.J. Furbey; Cecil B. Highland Jr., et al LEASE NO: DV018319; FDV011299 ACREAGE: 184; 65; 100; 123; 60
 PROPOSED WORK: DRILL CONVERT DRILL DEEPER FRACTURE OR STIMULATE PLUG OFF OLD FORMATION
 PERFORATE NEW FORMATION OTHER PHYSICAL CHANGE IN WELL (SPECIFY) _____
 PLUG AND ABANDON CLEAN OUT AND REPLUG TARGET FORMATION: Marcellus Shale ESTIMATED DEPTH: 7,500' TVD 14,700' MD
 WELL OPERATOR: Antero Resources Appalachian Corporation DESIGNATED AGENT: Dianna Stamper - CT Corporation System
 ADDRESS: 1625 17th Street ADDRESS: 5400 D Big Tyler Road
 Denver, CO 80202 Charleston, WV 25313



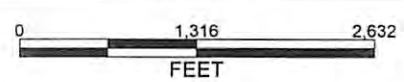
PETRA 8/14/2012 4:08:32 PM

Antero Resources Corporation

Appalachia Basin

Furbey Unit 2H

Doddridge County



REMARKS
 QUADRANGLE : BIG ISAAC
 WATERSHED : LAUREL RUN OF MEATHOUSE
 FORK
 DISTRICT : GREENBRIER

By: ECM

August 14, 2012