



Antero Resources
 Furley Unit 2H
 Doddridge County WV
 Northing: 14235148.19
 Easting: 1772817.27
 As Drilled

WELL DETAILS: Furley Unit 2H

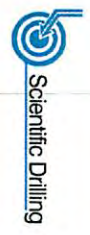
N/S	E/W	Northing	Ground Level	1358.0
0.0	0.0	14235148.19	Easting	1772817.27
			30° 12' 0.488" N 00° 31' 57.530" W	

PROJECT DETAILS: Doddridge County WV

Geodetic System: Universal Transverse Mercator (US Survey Feet)
 Datum: NAD 1983 (NADCON CONUS)
 Ellipsoid: Clarke 1866
 Zone: Zone 17N (64 W to 78 W)
 System Datum: Mean Sea Level

REFERENCE INFORMATION

Original (VD) Reference: New York State Geological Survey (NYS) Reference: 54-1574 (G&E)
 Survey: USGS Reference: 54-1574 (G&E)
 Mission: Canadian Method: Minimum Contouring

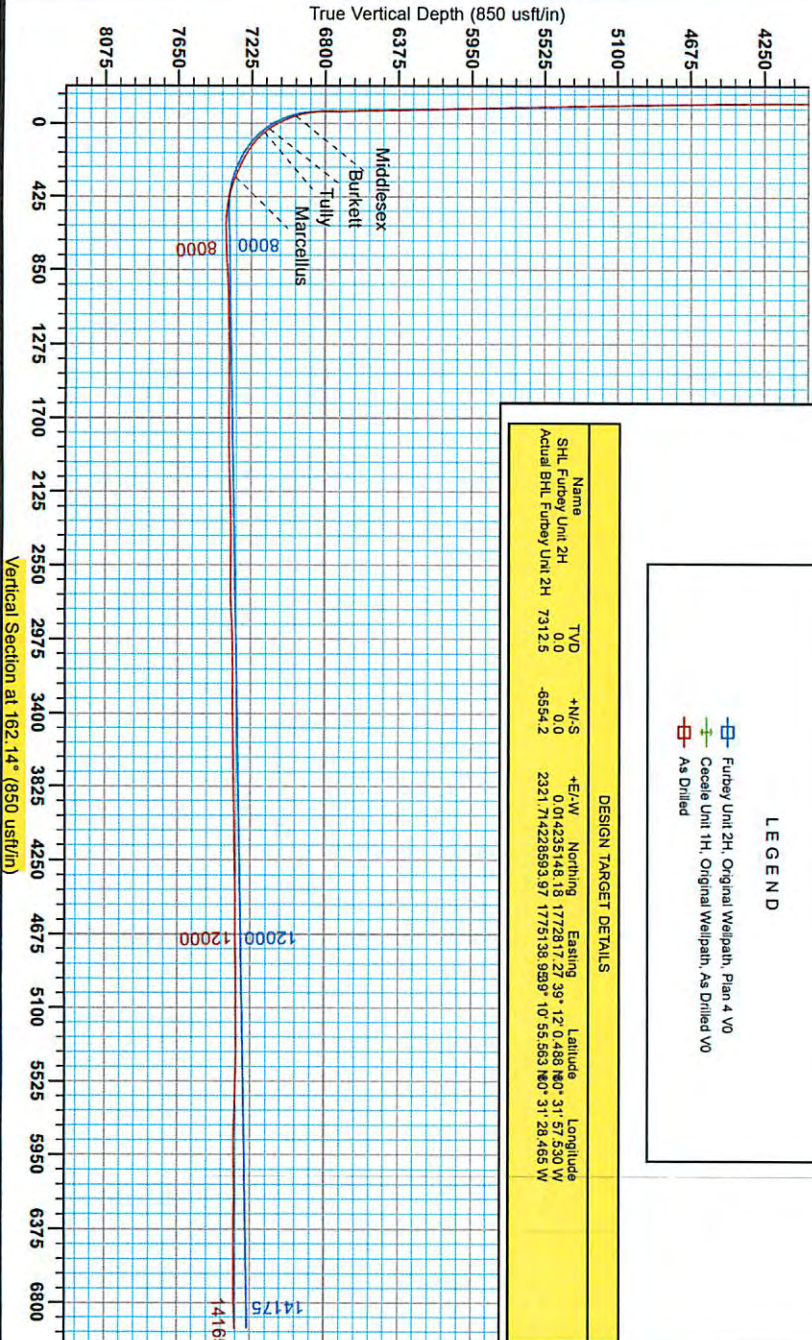


LEGEND

- Furley Unit 2H, Original Wellpath, Plan 4 VO
- Cecele Unit 1H, Original Wellpath, As Drilled VO
- As Drilled

DESIGN TARGET DETAILS

Name	TVD	+N/S	+E/W	Northing	Easting	Latitude	Longitude
Shl. Furley Unit 2H	0.0	0.0	0.0	14235148.18	1772817.27	39° 12' 0.488" N 0° 31' 57.530" W	
Actual BHL Furley Unit 2H	7312.5	-6554.2	2321.7	14228593.97	1775138.93	39° 10' 55.563" N 0° 31' 28.465" W	



RECEIVED
 Office of Oil and Gas
 MAY 26 2015
 WV Department of
 Environmental Protection

Asimuth to Grid North
 True North: 0.23°
 Magnetic North: -8.88°
 Magnetic Field
 Strength: 52329.7 nT
 Dip Angle: 66.80°
 Date: 7/16/2013
 Model: IGRF2010

06/05/2015



Antero Resources

Doddridge County WV
Cecele/Furbey Pad
Furbey Unit 2H
Original Wellpath

Design: As Drilled

EOW Completion Report

07 February, 2014

RECEIVED
Office of Oil and Gas

MAY 26 2015

WV Department of
Environmental Protection



Scientific Drilling

06/05/2015

Company:	Antero Resources	Local Co-ordinate Reference:	Well Furbey Unit 2H
Project:	Doddridge County WV	TVD Reference:	Furbey 2H 1358 + 22 KB @ 1380.0usft
Site:	Cecele/Furbey Pad	MD Reference:	Furbey 2H 1358 + 22 KB @ 1380.0usft
Well:	Furbey Unit 2H	North Reference:	Grid
Wellbore:	Original Wellpath	Survey Calculation Method:	Minimum Curvature
Design:	As Drilled	Database:	Oklahoma District

Project	Doddridge County WV, McClellan District		
Map System:	Universal Transverse Mercator (US Survey Feet)	System Datum:	Mean Sea Level
Geo Datum:	NAD 1927 (NADCON CONUS)		
Map Zone:	Zone 17N (84 W to 78 W)		

Site	Cecele/Furbey Pad				
Site Position:		Northing:	14,235,138.97 usft	Latitude:	39° 12' 0.396 N
From:	Map	Easting:	1,772,821.15 usft	Longitude:	80° 31' 57.481 W
Position Uncertainty:	2.0 usft	Slot Radius:	13-3/16"	Grid Convergence:	0.30 °

Well	Furbey Unit 2H, Marcellus					
Well Position	+N/-S	0.0 usft	Northing:	14,235,148.19 usft	Latitude:	39° 12' 0.488 N
	+E/-W	0.0 usft	Easting:	1,772,817.27 usft	Longitude:	80° 31' 57.530 W
Position Uncertainty	2.0 usft		Wellhead Elevation:	1,380.0 usft	Ground Level:	1,358.0 usft

Wellbore	Original Wellpath				
-----------------	-------------------	--	--	--	--

Magnetics	Model Name	Sample Date	Declination (°)	Dip Angle (°)	Field Strength (nT)
	IGRF2010	7/16/2013	-8.59	66.80	52,330

Design	As Drilled				
---------------	------------	--	--	--	--

Audit Notes:					
Version:	1.0	Phase:	ACTUAL	Tie On Depth:	0.0
Vertical Section:		Depth From (TVD) (usft)	+N/-S (usft)	+E/-W (usft)	Direction (°)
		0.0	0.0	0.0	182.44

Survey Program	Date 2/7/2014				
From (usft)	To (usft)	Survey (Wellbore)	Tool Name	Description	
109.0	6,624.8	Survey #5 Def Gyro to KOP (Original Well)	SDI Standard Keeper	Scientific Drilling Intl. Standard Wireline Keeper	
6,718.0	14,165.0	Survey #6 MWD (Original Wellpath)	MWD SDI	MWD - Standard ver 1.0.1	

MD (usft)	Inc (°)	Azi (azimuth) (°)	TVD (usft)	N/S (usft)	E/W (usft)	V. Sec (usft)	DLeg (°/100usft)
0.0	0.00	0.00	0.0	0.0	0.0	0.0	0.00
109.0	0.17	75.84	109.0	0.0	0.2	0.0	0.16
209.0	0.06	109.85	209.0	0.1	0.3	0.1	0.12
309.0	0.14	130.85	309.0	0.0	0.5	0.2	0.09
409.0	0.10	190.85	409.0	-0.2	0.6	0.4	0.12
509.0	0.09	116.40	509.0	-0.3	0.6	0.5	0.12
609.0	0.18	166.35	609.0	-0.5	0.7	0.7	0.14
709.0	0.14	154.23	709.0	-0.8	0.8	1.0	0.05
809.0	0.24	159.85	809.0	-1.1	0.9	1.3	0.10
909.0	0.17	182.56	909.0	-1.4	1.0	1.7	0.11
1,009.0	0.20	149.75	1,009.0	-1.7	1.1	2.0	0.11

RECEIVED
 Office of Oil and Gas
 MAY 26 2015
 WV Department of
 Environmental Protection

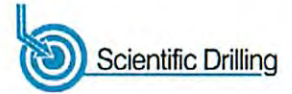


Company: Antero Resources	RECEIVED Office of Oil and Gas MAY 26 2015	Local Co-ordinate Reference: Well Furbey Unit 2H
Project: Doddridge County WV		TVD Reference: Furbey 2H 1358 + 22 KB @ 1380.0usft
Site: Cecele/Furbey Pad		MD Reference: Furbey 2H 1358 + 22 KB @ 1380.0usft
Well: Furbey Unit 2H		North Reference: Grid
Wellbore: Original Wellpath		Survey Calculation Method: Minimum Curvature
Design: As Drilled		Database: Oklahoma District

WV Department of Environmental Protection									
MD (usft)	Inc (°)	Azi (azimuth) (°)	TVD (usft)	N/S (usft)	E/W (usft)	V. Sec (usft)	DLeg (°/100usft)		
1,109.0	0.22	158.60	1,109.0	-2.1	1.2	2.3	0.04		
1,209.0	0.17	159.29	1,209.0	-2.4	1.4	2.7	0.05		
1,309.0	0.76	323.96	1,309.0	-2.0	1.0	2.2	0.93		
1,409.0	4.41	323.40	1,408.9	1.6	-1.6	-2.1	3.65		
1,509.0	5.23	339.18	1,508.5	9.0	-5.6	-10.3	1.55		
1,609.0	5.15	339.97	1,608.1	17.5	-8.7	-19.3	0.11		
1,709.0	4.82	341.11	1,707.7	25.7	-11.6	-28.0	0.34		
1,809.0	4.43	343.11	1,807.4	33.3	-14.1	-36.1	0.42		
1,909.0	4.15	343.68	1,907.1	40.5	-16.2	-43.5	0.28		
2,009.0	3.88	345.15	2,006.9	47.2	-18.1	-50.5	0.29		
2,109.0	3.89	345.67	2,106.7	53.8	-19.8	-57.3	0.04		
2,209.0	3.88	347.55	2,206.4	60.4	-21.4	-64.0	0.13		
2,309.0	3.91	346.94	2,306.2	67.0	-22.9	-70.8	0.05		
2,409.0	3.85	348.29	2,406.0	73.6	-24.3	-77.5	0.11		
2,509.0	3.64	351.34	2,505.8	80.1	-25.5	-84.0	0.29		
2,609.0	3.63	351.08	2,605.6	86.3	-26.5	-90.3	0.02		
2,709.0	2.99	353.46	2,705.4	92.0	-27.3	-96.0	0.65		
2,809.0	2.47	357.58	2,805.3	96.8	-27.7	-100.6	0.56		
2,909.0	2.12	0.12	2,905.2	100.8	-27.7	-104.4	0.36		
3,009.0	1.71	7.32	3,005.1	104.1	-27.5	-107.5	0.47		
3,109.0	1.51	8.26	3,105.1	106.9	-27.2	-110.1	0.20		
3,209.0	1.27	15.84	3,205.1	109.3	-26.7	-112.2	0.30		
3,309.0	0.91	22.28	3,305.0	111.1	-26.1	-113.7	0.38		
3,409.0	0.84	29.64	3,405.0	112.4	-25.4	-114.8	0.13		
3,509.0	0.71	40.49	3,505.0	113.5	-24.6	-115.6	0.20		
3,609.0	0.83	45.14	3,605.0	114.5	-23.7	-116.3	0.14		
3,709.0	0.67	56.86	3,705.0	115.4	-22.7	-116.8	0.22		
3,809.0	0.65	54.55	3,805.0	116.0	-21.8	-117.1	0.03		
3,909.0	0.68	67.65	3,905.0	116.6	-20.8	-117.3	0.15		
4,009.0	0.66	62.43	4,005.0	117.1	-19.7	-117.5	0.06		
4,109.0	0.75	73.05	4,105.0	117.5	-18.6	-117.5	0.16		
4,209.0	0.77	92.83	4,205.0	117.7	-17.3	-117.3	0.26		
4,309.0	0.72	108.07	4,305.0	117.4	-16.0	-116.7	0.20		
4,409.0	0.72	122.35	4,405.0	116.9	-14.9	-115.8	0.18		
4,509.0	0.75	127.06	4,504.9	116.2	-13.8	-114.8	0.07		
4,609.0	0.90	129.45	4,604.9	115.3	-12.7	-113.6	0.15		
4,709.0	1.00	142.40	4,704.9	114.1	-11.6	-112.1	0.24		
4,809.0	1.15	142.12	4,804.9	112.6	-10.4	-110.4	0.15		
4,909.0	1.27	138.69	4,904.9	111.0	-9.1	-108.4	0.14		
5,009.0	1.24	145.93	5,004.9	109.3	-7.7	-106.4	0.16		
5,109.0	1.12	155.13	5,104.8	107.5	-6.7	-104.4	0.22		
5,209.0	1.10	155.54	5,204.8	105.7	-5.9	-102.4	0.02		
5,309.0	1.11	147.20	5,304.8	104.0	-5.0	-100.5	0.16		
5,409.0	1.10	159.89	5,404.8	102.3	-4.1	-98.6	0.24		



RECEIVED EOW Completion Report
Office of Oil and Gas

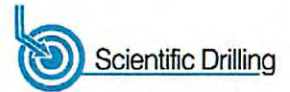


Company:	Antero Resources	Local Co-ordinate Reference:	Well Furbey Unit 2H
Project:	Doddridge County WV	TVD Reference:	Furbey 2H 1358 + 22 KB @ 1380.0usft
Site:	Cecele/Furbey Pad	MD Reference:	Furbey 2H 1358 + 22 KB @ 1380.0usft
Well:	Furbey Unit 2H	North Reference:	Grid
Wellbore:	Original Wellpath	Survey Calculation Method:	Minimum Curvature
Design:	As Drilled	Database:	Oklahoma District

MAY 26 2015

WV Department of Environmental Protection

MD (usft)	Inc (°)	Azi (azimuth) (°)	TVD (usft)	N/S (usft)	E/W (usft)	V. Sec (usft)	DLeg (°/100usft)
5,509.0	1.18	150.44	5,504.8	100.5	-3.3	-96.7	0.20
5,609.0	1.16	154.37	5,604.7	98.7	-2.3	-94.7	0.08
5,709.0	1.29	154.96	5,704.7	96.8	-1.4	-92.5	0.13
5,809.0	1.43	152.37	5,804.7	94.6	-0.4	-90.2	0.15
5,909.0	1.44	158.87	5,904.7	92.4	0.7	-87.7	0.16
6,009.0	1.22	153.75	6,004.6	90.2	1.6	-85.4	0.25
6,109.0	1.27	149.23	6,104.6	88.3	2.6	-83.3	0.11
6,209.0	1.21	145.30	6,204.6	86.5	3.8	-81.2	0.10
6,309.0	1.14	153.23	6,304.6	84.8	4.8	-79.2	0.18
6,409.0	1.20	147.15	6,404.5	83.0	5.9	-77.2	0.14
6,509.0	1.07	149.52	6,504.5	81.3	6.9	-75.3	0.14
6,609.0	1.14	142.73	6,604.5	79.7	8.0	-73.4	0.15
6,624.8	1.17	143.20	6,620.3	79.5	8.2	-73.1	0.20
6,718.0	1.20	141.10	6,713.5	77.9	9.4	-71.3	0.06
6,782.0	1.22	132.60	6,777.5	77.0	10.3	-70.1	0.28
6,814.0	1.35	129.63	6,809.5	76.5	10.8	-69.5	0.46
6,846.0	3.34	142.97	6,841.4	75.5	11.7	-68.3	6.41
6,878.0	6.77	151.31	6,873.3	73.1	13.1	-65.5	10.93
6,910.0	11.09	146.52	6,904.9	68.9	15.7	-60.7	13.69
6,942.0	15.12	141.82	6,936.1	63.0	20.0	-53.8	13.02
6,974.0	18.82	141.47	6,966.7	55.7	25.8	-45.1	11.57
6,978.0	19.24	141.59	6,970.5	54.7	26.6	-43.9	10.60
Middlesex							
7,006.0	22.20	142.30	6,996.6	46.9	32.7	-34.6	10.60
7,038.0	23.85	143.45	7,026.1	36.9	40.3	-22.8	5.34
7,071.0	26.56	142.88	7,055.9	25.7	48.7	-9.5	8.24
7,103.0	30.49	141.47	7,084.1	13.6	58.1	4.9	12.46
7,135.0	34.73	141.72	7,111.0	0.1	68.8	21.0	13.26
7,152.0	37.02	141.73	7,124.8	-7.7	75.0	30.4	13.50
Burkett							
7,167.0	39.05	141.73	7,136.6	-15.0	80.7	39.0	13.50
7,187.0	41.79	141.80	7,151.8	-25.2	88.7	51.2	13.69
Tully							
7,199.0	43.43	141.84	7,160.6	-31.6	93.7	58.8	13.69
7,231.0	47.68	142.09	7,183.0	-49.6	107.8	80.2	13.29
7,263.0	51.16	141.50	7,203.9	-68.6	122.8	103.0	10.96
7,296.0	55.66	141.16	7,223.5	-89.3	139.4	127.8	13.66
7,328.0	59.45	141.04	7,240.7	-110.3	156.4	153.0	11.85
7,360.0	62.30	140.99	7,256.3	-132.1	173.9	179.0	8.91
7,392.0	64.98	141.00	7,270.5	-154.3	192.0	205.8	8.38
7,424.0	65.02	140.75	7,284.0	-176.8	210.3	232.8	0.72
7,456.0	66.25	141.87	7,297.2	-199.6	228.5	260.1	4.99
7,488.0	68.41	145.99	7,309.5	-223.5	245.9	288.1	13.66
7,513.0	69.57	149.48	7,318.5	-243.2	258.3	310.7	13.81
Marcellus							



Company:	Antero Resources	Local Co-ordinate Reference:	Well Furbey Unit 2H
Project:	Doddridge County WV	TVD Reference:	Furbey 2H 1358 + 22 KB @ 1380.0usft
Site:	Cecele/Furbey Pad	MD Reference:	Furbey 2H 1358 + 22 KB @ 1380.0usft
Well:	Furbey Unit 2H	North Reference:	Grid
Wellbore:	Original Wellpath	Survey Calculation Method:	Minimum Curvature
Design:	As Drilled	Database:	Oklahoma District

MD (usft)	Inc (°)	Azi (azimuth) (°)	TVD (usft)	N/S (usft)	E/W (usft)	V. Sec (usft)	DLeg (°/100usft)
7,521.0	69.95	150.58	7,321.3	-249.7	262.1	318.0	13.81
7,553.0	70.75	153.53	7,332.0	-276.3	276.2	347.7	9.03
7,585.0	71.71	155.42	7,342.3	-303.7	289.3	377.7	6.35
7,617.0	76.25	156.45	7,351.2	-331.7	301.8	408.3	14.52
7,649.0	80.80	157.67	7,357.5	-360.6	314.0	439.5	14.70
7,770.0	86.74	160.09	7,370.6	-472.8	357.3	559.6	5.30
7,867.0	91.58	161.63	7,372.1	-564.4	389.1	656.5	5.24
7,963.0	92.86	160.90	7,368.4	-655.2	419.9	752.4	1.53
8,060.0	92.56	160.97	7,363.8	-746.8	451.6	849.3	0.32
8,156.0	92.01	159.86	7,359.9	-837.1	483.7	945.2	1.29
8,252.0	91.61	161.29	7,356.9	-927.6	515.6	1,041.1	1.55
8,348.0	91.24	160.31	7,354.5	-1,018.3	547.2	1,137.0	1.09
8,443.0	90.67	160.84	7,352.9	-1,107.8	578.8	1,232.0	0.82
8,540.0	90.13	162.76	7,352.3	-1,200.0	609.1	1,329.0	2.06
8,635.0	90.17	162.48	7,352.0	-1,290.6	637.4	1,423.9	0.30
8,732.0	90.03	163.24	7,351.8	-1,383.3	666.0	1,520.9	0.80
8,828.0	89.93	163.41	7,351.9	-1,475.3	693.6	1,616.9	0.21
8,925.0	89.87	163.71	7,352.0	-1,568.3	721.0	1,713.9	0.32
9,016.0	90.74	164.31	7,351.6	-1,655.8	746.1	1,804.8	1.16
9,106.0	89.90	162.66	7,351.1	-1,742.1	771.7	1,894.8	2.06
9,198.0	91.54	163.76	7,349.9	-1,830.2	798.3	1,986.8	2.15
9,288.0	92.56	161.50	7,346.7	-1,916.0	825.1	2,076.7	2.75
9,379.0	90.70	158.27	7,344.1	-2,001.4	856.4	2,167.6	4.09
9,470.0	91.28	157.20	7,342.5	-2,085.6	890.9	2,258.3	1.34
9,561.0	90.91	158.50	7,340.8	-2,169.9	925.2	2,349.0	1.49
9,652.0	90.13	158.71	7,340.0	-2,254.6	958.3	2,439.9	0.89
9,743.0	89.26	161.85	7,340.4	-2,340.2	989.0	2,530.8	3.58
9,834.0	89.09	160.05	7,341.7	-2,426.2	1,018.7	2,621.8	1.99
9,925.0	90.80	163.70	7,341.8	-2,512.7	1,047.0	2,712.7	4.43
10,016.0	93.30	166.36	7,338.6	-2,600.5	1,070.5	2,803.6	4.01
10,112.0	92.39	165.42	7,333.8	-2,693.5	1,093.9	2,899.2	1.36
10,208.0	90.87	164.39	7,331.1	-2,786.2	1,118.9	2,995.1	1.91
10,304.0	90.70	165.79	7,329.8	-2,878.9	1,143.6	3,090.9	1.47
10,401.0	89.83	164.44	7,329.3	-2,972.7	1,168.5	3,187.8	1.66
10,495.0	89.36	161.71	7,330.0	-3,062.6	1,195.9	3,281.8	2.95
10,591.0	91.45	160.28	7,329.3	-3,153.4	1,227.1	3,377.7	2.64
10,688.0	90.91	159.77	7,327.3	-3,244.5	1,260.3	3,474.7	0.77
10,784.0	90.64	160.97	7,326.0	-3,334.9	1,292.5	3,570.6	1.28
10,881.0	90.57	160.08	7,325.0	-3,426.4	1,324.9	3,667.6	0.92
10,978.0	91.38	162.11	7,323.3	-3,518.1	1,356.3	3,764.5	2.25
11,074.0	90.40	161.21	7,321.8	-3,609.2	1,386.5	3,860.5	1.39
11,170.0	91.11	161.67	7,320.6	-3,700.2	1,417.0	3,956.5	0.88
11,267.0	90.77	162.26	7,319.0	-3,792.4	1,447.1	4,053.5	0.70
11,363.0	90.60	160.70	7,317.8	-3,883.5	1,477.5	4,149.5	1.63



Company: Antero Resources	MAY 26 2015	Local Co-ordinate Reference: Well Furbey Unit 2H
Project: Doddridge County WV		TVD Reference: Furbey 2H 1358 + 22 KB @ 1380.0usft
Site: Cecele/Furbey Pad		MD Reference: Furbey 2H 1358 + 22 KB @ 1380.0usft
Well: Furbey Unit 2H		North Reference: Grid
Wellbore: Original Wellpath		Survey Calculation Method: Minimum Curvature
Design: As Drilled		Database: Oklahoma District

MD (usft)	Inc (°)	Azi (azimuth) (°)	TVD (usft)	N/S (usft)	E/W (usft)	V. Sec (usft)	DLeg (°/100usft)
11,460.0	90.94	161.62	7,316.5	-3,975.2	1,508.9	4,246.4	1.01
11,556.0	91.95	162.77	7,314.1	-4,066.6	1,538.2	4,342.4	1.59
11,652.0	90.54	162.61	7,312.0	-4,158.2	1,566.8	4,438.4	1.48
11,748.0	88.96	159.51	7,312.4	-4,249.0	1,597.9	4,534.3	3.62
11,845.0	90.20	161.66	7,313.2	-4,340.5	1,630.2	4,631.3	2.56
11,941.0	91.45	164.63	7,311.8	-4,432.4	1,658.0	4,727.3	3.36
12,037.0	91.17	163.75	7,309.6	-4,524.7	1,684.1	4,823.2	0.96
12,134.0	90.84	163.35	7,307.9	-4,617.7	1,711.6	4,920.1	0.53
12,230.0	89.46	160.13	7,307.6	-4,708.9	1,741.7	5,016.1	3.65
12,326.0	89.43	162.01	7,308.6	-4,799.7	1,772.8	5,112.1	1.96
12,422.0	91.54	163.96	7,307.7	-4,891.5	1,800.9	5,208.1	2.99
12,517.0	89.80	163.27	7,306.6	-4,982.6	1,827.7	5,303.0	1.97
12,614.0	88.29	161.13	7,308.3	-5,074.9	1,857.3	5,400.0	2.70
12,709.0	88.82	163.44	7,310.6	-5,165.4	1,886.2	5,495.0	2.49
12,805.0	89.03	163.97	7,312.5	-5,257.5	1,913.2	5,590.9	0.59
12,901.0	88.12	163.27	7,314.8	-5,349.6	1,940.2	5,686.8	1.20
12,997.0	88.49	162.77	7,317.7	-5,441.4	1,968.3	5,782.8	0.65
13,094.0	90.37	162.32	7,318.6	-5,533.9	1,997.4	5,879.8	1.99
13,190.0	89.83	161.98	7,318.5	-5,625.3	2,026.8	5,975.8	0.66
13,286.0	91.21	162.83	7,317.6	-5,716.8	2,055.8	6,071.8	1.69
13,381.0	90.57	161.15	7,316.1	-5,807.1	2,085.2	6,166.7	1.89
13,478.0	88.79	159.31	7,316.7	-5,898.4	2,118.0	6,263.7	2.64
13,574.0	89.02	161.38	7,318.5	-5,988.7	2,150.3	6,359.6	2.17
13,671.0	90.34	164.40	7,319.0	-6,081.4	2,178.8	6,456.6	3.40
13,767.0	90.44	163.17	7,318.4	-6,173.6	2,205.6	6,552.5	1.29
13,864.0	89.60	162.75	7,318.4	-6,266.4	2,234.0	6,649.5	0.97
13,960.0	90.57	163.89	7,318.2	-6,358.3	2,261.6	6,745.5	1.56
14,056.0	92.01	163.22	7,316.1	-6,450.4	2,288.7	6,841.5	1.65
14,101.0	91.81	162.19	7,314.6	-6,493.3	2,302.1	6,886.4	2.33
14,165.0	91.81	162.19	7,312.5	-6,554.2	2,321.7	6,950.4	0.00

Measured Depth (usft)	Vertical Depth (usft)	Local Coordinates		Comment
		+N/-S (usft)	+E/-W (usft)	
6,978.0	6,970.5	54.7	26.6	Middlesex
7,152.0	7,124.8	-7.7	75.0	Burkett
7,187.0	7,151.8	-25.2	88.7	Tully
7,513.0	7,318.5	-243.2	258.3	Marcellus

Checked By: _____ Approved By: _____ Date: _____