



Antero Resources
 Moore Unit 2H
 Doddridge County WV
 Northing: 14277823.33
 Easting: 1725282.39
 Original Wellpath

17.06129

WELL DETAILS: Moore Unit 2H

+N/S	+E/W	Northing	Ground Level	Latitude	Longitude	Slot
0.0	0.0	14277823.33	1725282.39	39° 19' 4.431 N80° 41' 59.768 W		

REFERENCE INFORMATION

Coordinates (N/E) Reference: Wellbore Log 2H_GSA1400
 Vertical (TV) Reference: Moore Unit 2H GL 1237 * 23 848 @ 1200 Burnt (Original Well Elev)
 Measured Depth Reference: Moore Unit 2H GL 1237 * 23 848 @ 1200 Burnt (Original Well Elev)
 Circulation Method: Minimum Circulation

PROJECT DETAILS: Doddridge County WV

Geodetic System: Universal Transverse Mercator (US Survey Feet)
 Datum: NAD 1983 (NAD83 CONUS)
 Ellipsoid: GRS 1980
 Zone: Zone 17N (84 W to 78 W)
 System Datum: Mean Sea Level

Scientific Drilling
 421 South Eagle Lane
 Oklahoma City, OK

Genie Lightfoot
 15:11, July 18 2013

LEGEND

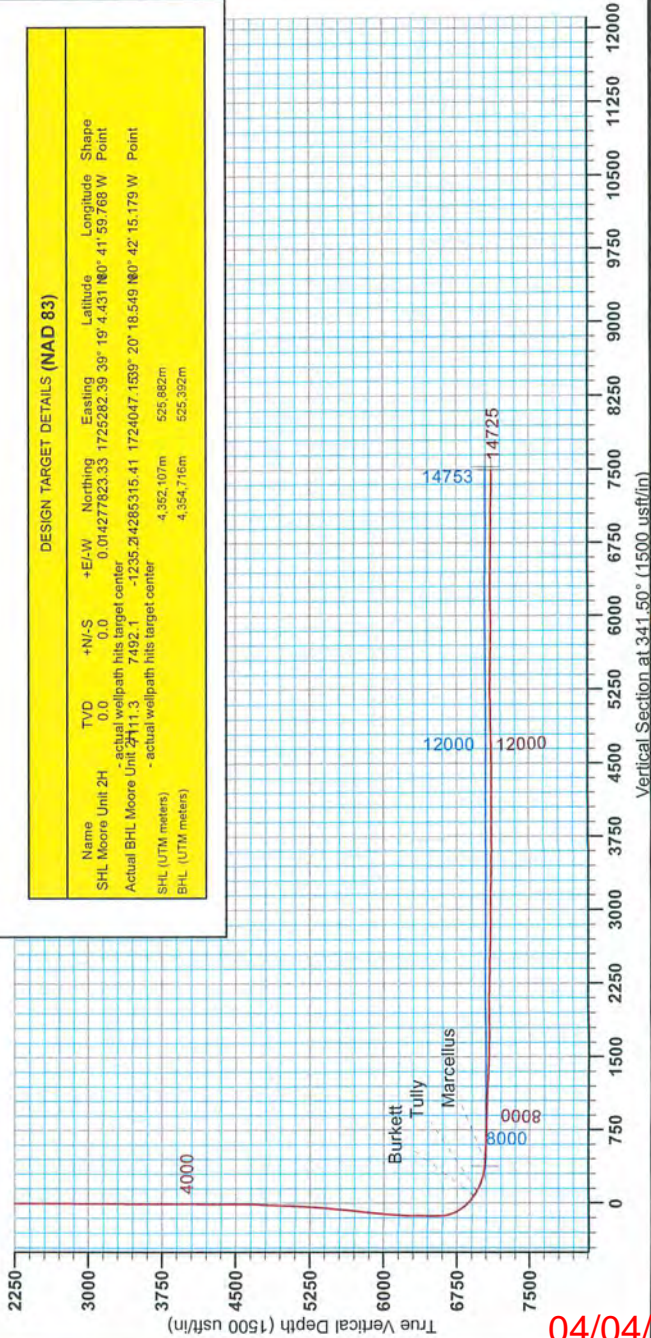
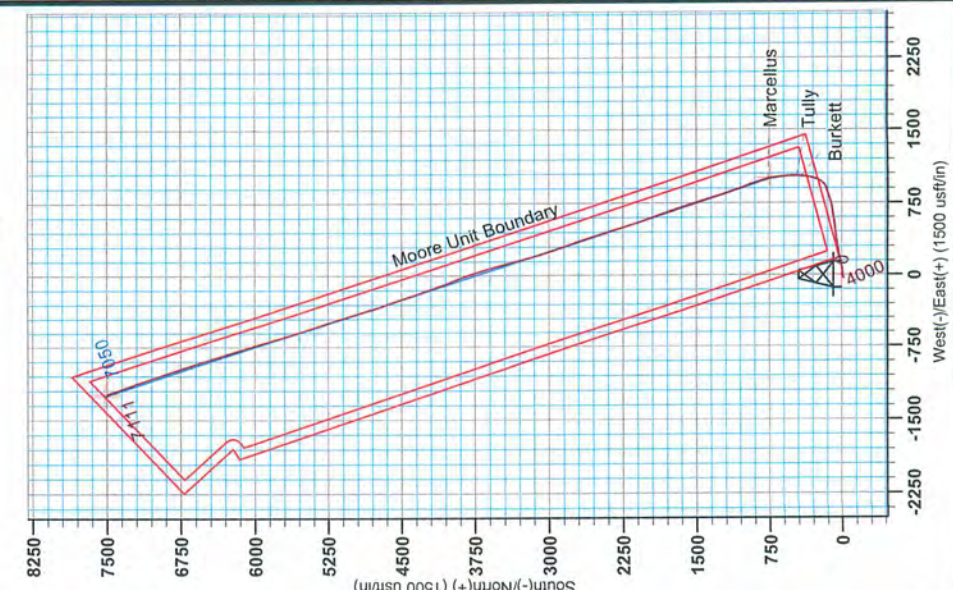
- Moore Unit 2H, Original Wellpath, Plan 4 VO
- Original Wellpath

DESIGN TARGET DETAILS (NAD 83)

Name	TVD	+N/-S	+E/-W	Northing	Easting	Latitude	Longitude	Shape
SHL Moore Unit 2H	0.0	0.0	0.0	14277823.33	1725282.39	39° 19' 4.431 N80° 41' 59.768 W	Point	
Actual BHL Moore Unit 2H	11.3	7492.1	-1235.2	4285315.41	1724047.1639	20° 18.549 N80° 42' 15.775 W	Point	
SHL (UTM meters)				4,362,107m	525,862m			
BHL (UTM meters)				4,354,716m	525,392m			

Azimuths to Grid North
 True North: -0.19°
 Magnetic North: -8.87°
 Strength: 52.82 Gauss
 Declination: 8.67°
 Date: 12/13/2012
 Model: IGRF2010

To convert Magnetic North to Grid, Subtract 8.67°
 To convert True North to Grid, Subtract 0.19°



04/04/2014

RECEIVED
 Office of Oil and Gas
 Department of Environmental Protection
 09/2013