

17-06128



Antero Resources
Moore Unit 1H
Doddridge County WV
Northing: 14277822.16
Easting: 1725272.41
Original Wellpath

WELL DETAILS: Moore Unit 1H

+N/-S	+E/-W	Northing	Ground Level	1237.0	Slot
0.0	0.0	14277822.16	Easting	1725272.41	1237.0
			Latitude	39° 19' 4.20 N	80° 41' 59.895 W
			Longitude		

REFERENCE INFORMATION

Coordinate (NE) Reference: Well Moore Unit 1H, Grid North
 Vertical (TV) Reference: Moore 1H 1237 GL + 23 KB @ 1250 (ustf) (Original Well Elev)
 Section (VS) Reference: Slot - (O.D.N. 6.0E)
 Measured Depth Reference: Moore 1H 1237 GL + 23 KB @ 1250 (ustf) (Original Well Elev)
 Calculation Method: Minimum Curvature

PROJECT DETAILS: Doddridge County WV

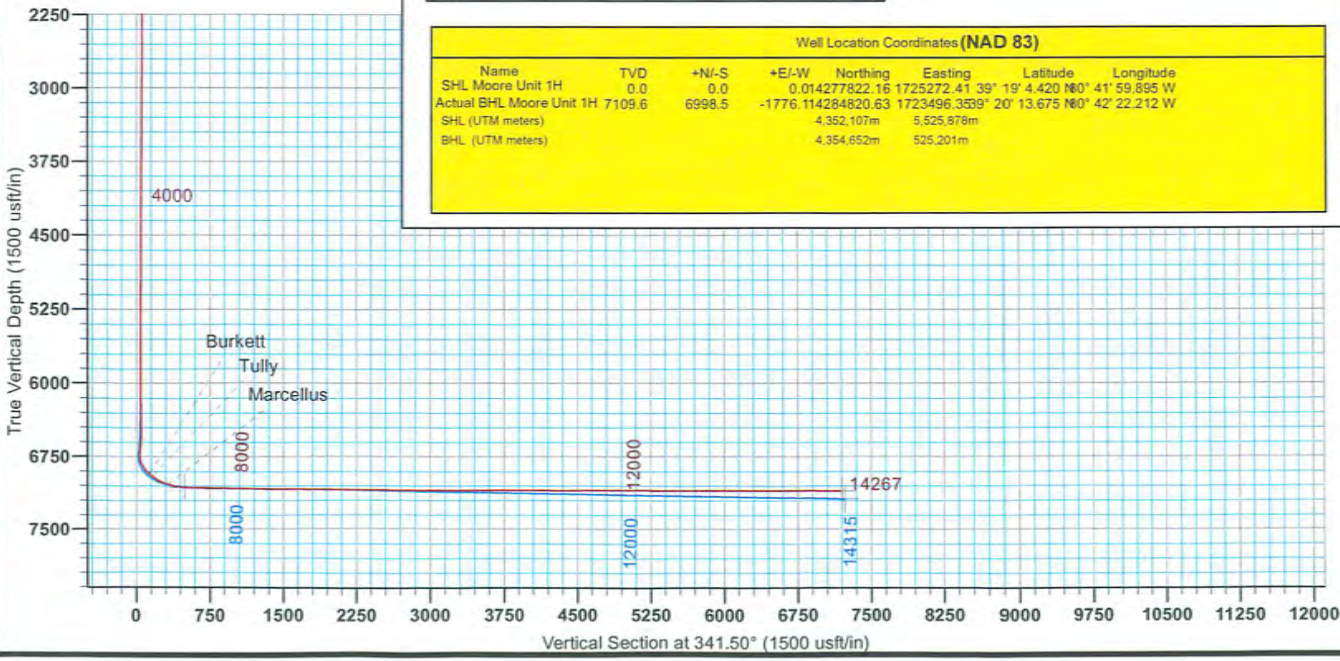
Geodetic System: Universal Transverse Mercator (US Survey Feet)
 Datum: NAD 1927 (NADCON CONUS)
 Ellipsoid: Clarke 1866
 Zone: Zone 17N (84 W to 78 W)
 System Datum: Mean Sea Level

LEGEND

- Moore Unit 2H, Original Wellpath, Original Wellpath V0
- Moore Unit 1H, Original Wellpath, Plan 3 Post Gyro V0
- Original Wellpath

Well Location Coordinates (NAD 83)

Name	TVD	+N/-S	+E/-W	Northing	Easting	Latitude	Longitude
SHL Moore Unit 1H	0.0	0.0	0.0	14277822.16	1725272.41	39° 19' 4.20 N	80° 41' 59.895 W
Actual BHL Moore Unit 1H	7109.6	6998.5	-1776.1	114284820.63	1723496.3539	20° 13.675 N	80° 42' 22.212 W
SHL (UTM meters)				4,352,107m	5,525,876m		
BHL (UTM meters)				4,354,652m	525,201m		



RECEIVED
 DEC 9 2013
 Office of Oil and Gas
 Environmental Protection
 Department of Environmental Protection

Genie Lightfoot
 15:04, July 18 2013

Scientific Drilling
 421 South Eagle Lane
 Oklahoma City, OK

North
 True North: -0.19°
 Magnetic North: -8.67°

Magnetic Field
 Strength: 52468.5nT
 Dip Angle: 66.96°
 Date: 1/24/2013
 Model: IGRF2010

To convert Magnetic North to Grid, Subtract 8.67°
 To convert True North to Grid, Subtract 0.19°

