



Antero Resources
 Kemper Unit 1H
 Doddridge County WV
 Northing: 14302253.71
 Easting: 1765051.96
 Original Wellpath

WELL DETAILS: Kemper Unit 1H

Ground Level:	1269.0	Slot	Kemper 1H
Easting	14302253.71	Latitude	1765051.96 39° 23' 4.371 N 80° 33' 32.046 W
Northing	14302253.71	Longitude	1765051.96 39° 23' 4.371 N 80° 33' 32.046 W
+N/S	0.0		
+E/W	0.0		

PROJECT DETAILS: Doddridge County WV

Ceodetic System: Universal Transverse Mercator (US Survey Feet)
 Datum: NAD 1983 (NAD83 CONUS)
 Ellipsoid: Clarke 1866
 Zone: Zone 17N (84 W to 78 W)
 System Datum: Mean Sea Level

REFERENCE INFORMATION

Coordinates: Well Kemper Unit 1H - Scientific Drilling, Gen North
 Vertical (VD) Reference: Well Kemper Unit 1H - Scientific Drilling, Gen North
 Station (S) Reference: SHL - Kemper Unit 1H, 0.00' @ 1500' (Original Well Elev)
 Method: Minimum Curvature
 Calculation Method: Minimum Curvature

Genie Lightfoot
 10:05, July 18 2013
 Scientific Drilling
 421 South Eagle Lane
 Oklahoma City, OK

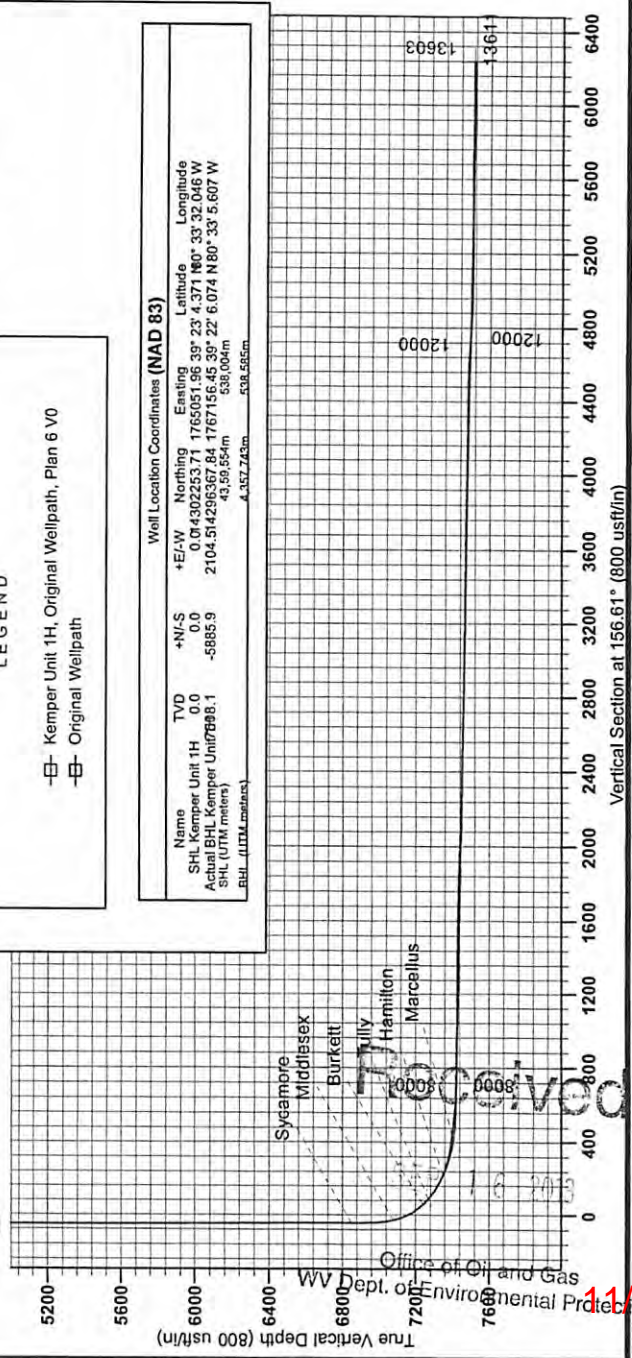


LEGEND

- Kemper Unit 1H, Original Wellpath, Plan 6 V0
- Original Wellpath

Well Location Coordinates (NAD 83)

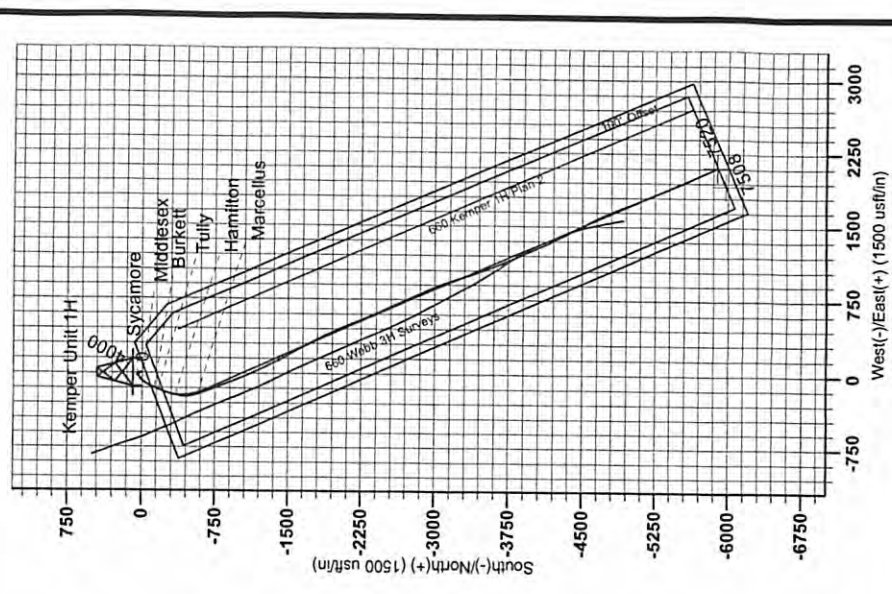
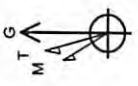
Name	TVD	+N/S	+E/W	Northing	Easting	Latitude	Longitude
SHL Kemper Unit 1H	0.0	0.0	0.0	14302253.71	1765051.96	39° 23' 4.371 N	80° 33' 32.046 W
Actual BHL - Kemper Unit 1H	0.0	-5885.9	2104.51	4296367.84	1767156.45	39° 22' 6.074 N	80° 33' 5.607 W
SHL (UTM meters)				43,59,554m	538,004m		
BHL (UTM meters)				4,357,743m	538,656m		



To convert Magnetic North to Grid, Subtract 6.87°
 To convert True North to Grid, Subtract 0.26°

Azimuths to Grid North
 True North: -0.23°
 Magnetic North: -6.87°

Magnetic Field
 Strength: 48.00
 Dip Angle: 61.01°
 Date: 11/27/2012
 Model: IGRF2010



17-06117

11/08/2013

Office of Oil and Gas
 WV Dept. of Environmental Protection