



Antero Resources
 Crislip Unit 1H
 Doddridge County WV
 Northing: 14237710.76
 Easting: 1727494.86
 Sidetrack 1

WELL DETAILS: Crislip Unit 1H

+N/-S	+E/-W	Northing	Easting	Longitude	Spot
0.0	0.0	14237710.76	1727494.8639	12 27 741 N 80° 41' 33.340 W	

PROJECT DETAILS: Doddridge County WV

Geodetic System: Universal Transverse Mercator (US Survey Feet)
 Datum: NAD 1983 (NAD83 CONUS)
 Ellipsoid: Clarke 1866
 Zone: Zone 17N (84 W to 78 W)
 System Datum: Mean Sea Level

REFERENCE INFORMATION

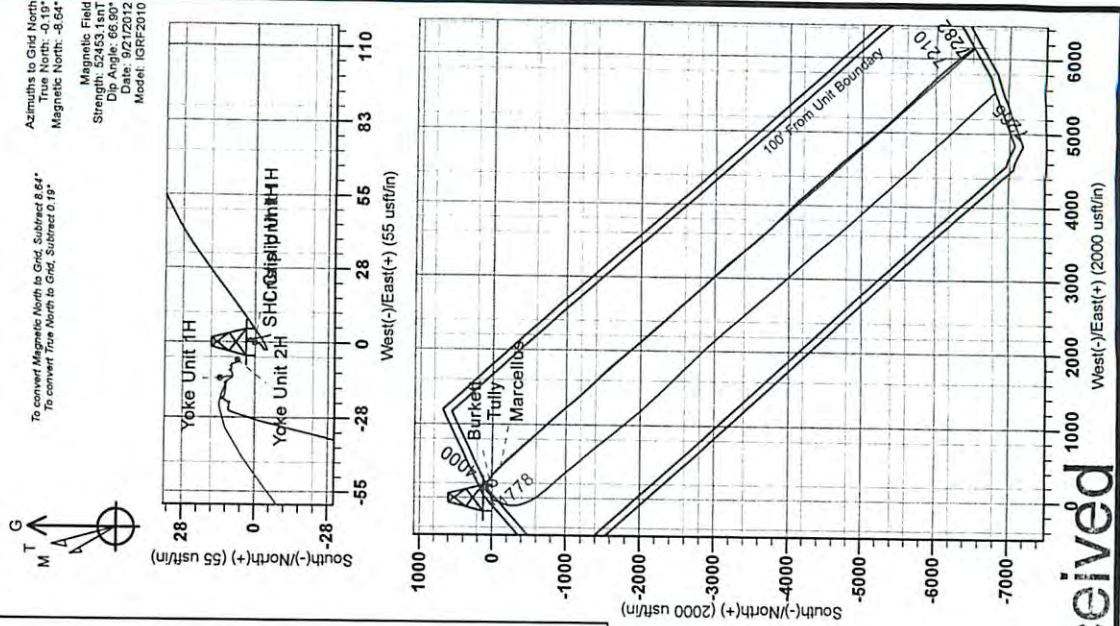
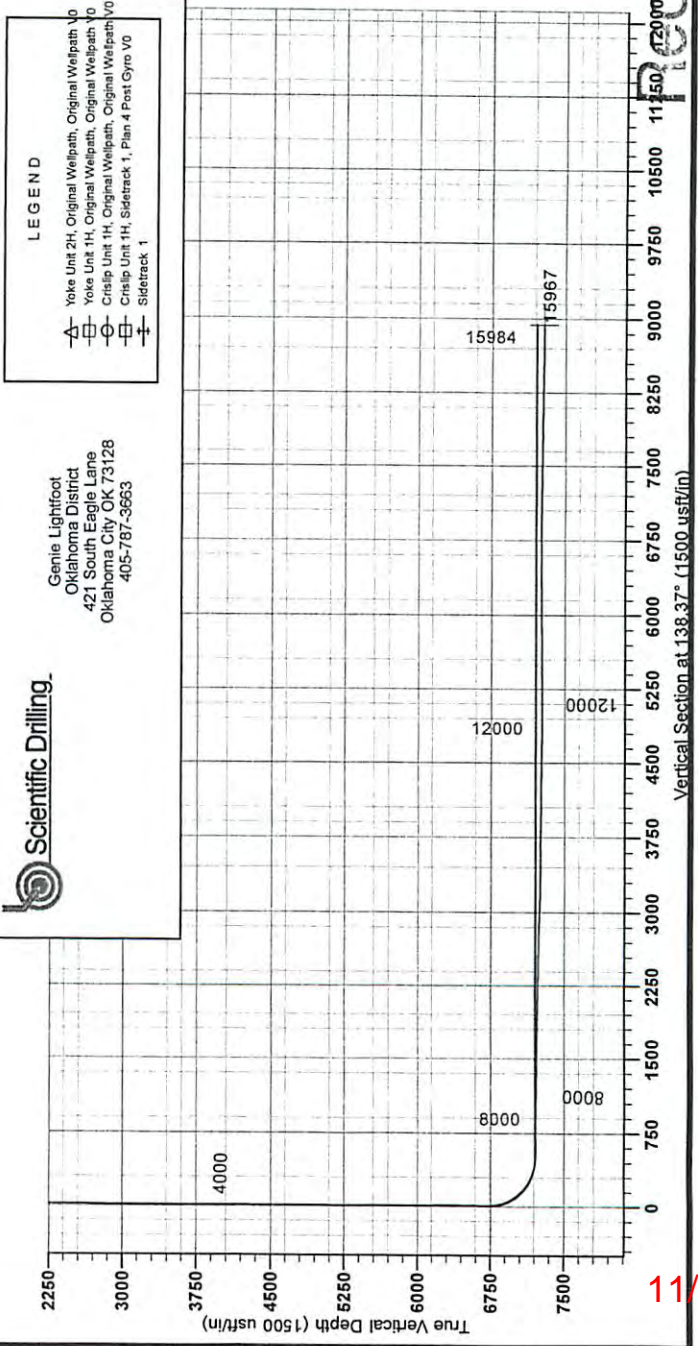
Coordinate System: Wellbore Unit 1H, Original Well Path
 Vertical (US) Reference: Spot, (CON, 0.00)
 Horizontal (US) Reference: Spot, (CON, 0.00)
 Calculation Method: Minimum Curvature

Well Location Coordinates (NAD 83)

Name	TVD	+N/-S	+E/-W	Northing	Easting	Longitude
SHL Crislip Unit 1H	0.0	0.0	0.0	14237710.76	1727494.8639	12 27 741 N 80° 41' 33.340 W
Actual BHL Crislip Unit 1H	7291.7	-6489.3	6146.31423121151	1733841.1639	11 23 265 N 80° 40' 15.528 W	
SHL (UTM meters)				4,339,891m	526,556m	
BHL (UTM meters)				4,337,900m	528,442m	

LEGEND

- Yoke Unit 2H, Original Wellpath, Original Wellpath V0
- Yoke Unit 1H, Original Wellpath, Original Wellpath V0
- Crislip Unit 1H, Original Wellpath, Original Wellpath V0
- Crislip Unit 1H, Sidetrack 1, Plan 4 Post Gyro V0
- Sidetrack 1



0019017-06100

SEP 16 2013

Office of Oil and Gas
 WV Dept. of Environmental Protection

11/08/2013