

17.06094



Antero Resources
 Ruckman Unit 1H
 Doddridge County WV
 Northing: 14217487.35
 Easting: 1726777.12
 Original Wellpath



14:16, September 06 2013
 Gentle Lightfoot
 Scientific Drilling
 421 South Eagle Lane
 Oklahoma City, OK

REFERENCE INFORMATION
 Computer: NPI Database
 Version: 10.0
 Project: Ruckman Unit 1H
 Well: 14217487.35
 Date: 09/06/2013
 Author: J. G. ...
 Calculator: Microsoft Excel

WELL DETAILS: Ruckman Unit 1H

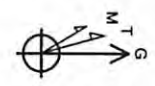
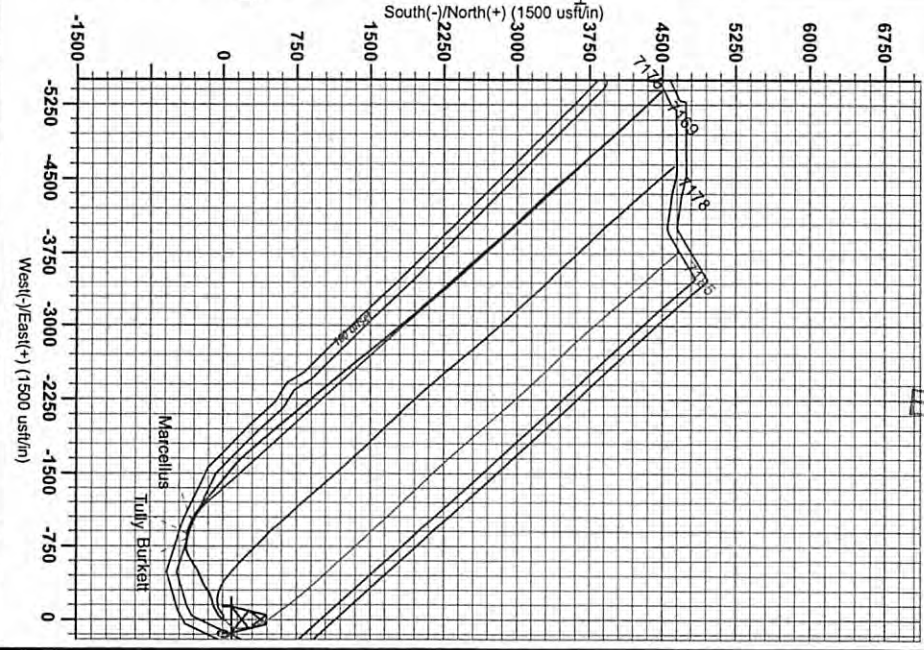
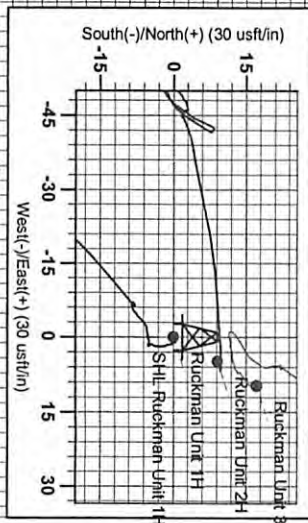
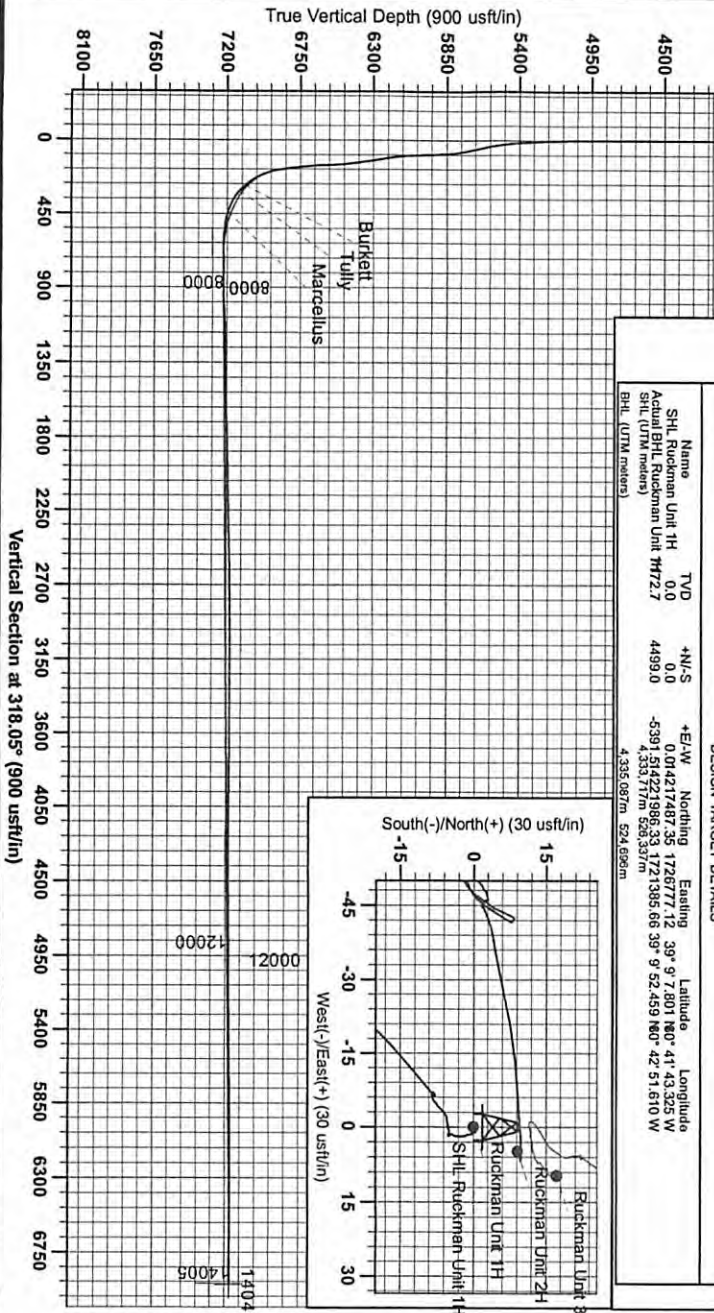
Ground Level: 1250.0
 +N/S: 0.0
 +E/W: 0.0
 Northing: 14217487.35
 Easting: 1726777.12
 Latitude: 39° 9' 7.801 860" 41' 43.325" W
 Longitude: 92° 52' 51.610 860" 42' 51.610" W

LEGEND

- ▲ Ruckman Unit 2H: Original Wellpath, Original Wellpath VO
- Ruckman Unit 1H: Original Wellpath, Plan 6 VO
- Ruckman Unit 3H: Original Wellpath, Original Wellpath VO
- ⊖ Original Wellpath

DESIGN TARGET DETAILS

Name	TVD	+N/S	+E/W	Northing	Easting	Latitude	Longitude
SHL Ruckman Unit 1H	0.0	0.0	0.0	14217487.35	1726777.12	39° 9' 7.801 860" 41' 43.325" W	92° 52' 51.610 860" 42' 51.610" W
Actual BHL Ruckman Unit 1H	4499.0	-5391.514221986	524.6987m	524.6987m	524.6987m	524.6987m	524.6987m
SHL (UTM meters)							
BHL (UTM meters)							



RECEIVED
 Office of Oil and Gas
 09/25/2013
 WV Department of
 Environmental Protection

Azimuth to Grid North
 True North: -0.17°
 Magnetic North: -0.53°
 Strength: 52414.1nT
 Dip Angle: 66.86°
 Date: 10/23/2012
 Model: IGRF-2010

01/10/2014