

LATITUDE 39°20'00"

10,556' TO TOP HOLE

7,220' TO BOTTOM HOLE

LATITUDE 39°17'30"

Antero Resources Appalachian Corporation Well No. Valentine Unit 1H

JONATHAN DAVIS
D.B. 202 PG. 639
T.M. 7 PAR. 02
35.21 AC.±

SMITH ET AL
LEASE

N:294187
E:1624521

JONATHAN DAVIS
D.B. 202 PG. 639
T.M. 7 PAR. 01
245.77 AC.±

JONATHAN DAVIS
D.B. 202 PG. 639
T.M. 7 PAR. 01
245.77 AC.±

REFERENCES

S 83°29' W
212.9'

WELL # 1-H

S 56°26' E
227.5'

24" BLACK OAK

1" = 200'

16" MAPLE

NOTES:

WELL 1-H TOP HOLE INFORMATION:
N: 293,916ft E: 1,623,915ft
LAT: 39°17'57.6" LON: 80°49'44.3"
BOTTOM HOLE INFORMATION:
N: 287,319ft E: 1,627,157ft
LAT: 39°16'52.9" LON: 80°49'01.8"
WEST VIRGINIA COORDINATE SYSTEM OF 1927 NORTH ZONE. ZONE WAS DERIVED FROM MEASUREMENTS TAKEN WITH TRIMBLE GEOXT SUBMETER MAPPING GRADE GPS UNIT. PLAT ORIENTATION, CORNER, AND WELL REFERENCE TIE LINES ARE BASED ON GRID NORTH.

(NAD) 83 (UTM) ZONE 17 COORDS:
WELL 1-H TOP HOLE INFORMATION:
N: 4,350,018m E: 514,762m
BOTTOM HOLE INFORMATION:
N: 4,348,025m E: 515,783m

WV NORTH ZONE
GRID NORTH

3,756' TO BOTTOM HOLE
LONGITUDE 80°47'30"

LONGITUDE 80°47'30"

12,382' TO TOP HOLE

COUNTY NAME PERMIT

WELL # 1-H

N 65°55' E
663.4'

S 11°05' E
1014.4'

1014.4'

OAK STUMP FOUND

1614.0'

REBAR FOUND

1-H BOTTOM HOLE

1-H TOP HOLE

WELL # 1-H

S 51°00' E
7356.9'

3000'

WELL # 1-H

S 51°00' E
7356.9'

3000'

WELL # 1-H

S 51°00' E
7356.9'

3000'

WELL # 1-H

S 51°00' E
7356.9'

3000'

WELL # 1-H

S 51°00' E
7356.9'

3000'

WELL # 1-H

S 51°00' E
7356.9'

3000'

WELL # 1-H

S 51°00' E
7356.9'

3000'

WELL # 1-H

S 51°00' E
7356.9'

3000'

WELL # 1-H

S 51°00' E
7356.9'

3000'

WELL # 1-H

S 51°00' E
7356.9'

3000'

WELL # 1-H

S 51°00' E
7356.9'

3000'

WELL # 1-H

S 51°00' E
7356.9'

3000'

WELL # 1-H

S 51°00' E
7356.9'

3000'

WELL # 1-H

S 51°00' E
7356.9'

3000'

WELL # 1-H

S 51°00' E
7356.9'

3000'

WELL # 1-H

S 51°00' E
7356.9'

3000'

WELL # 1-H

S 51°00' E
7356.9'

3000'

WELL # 1-H

S 51°00' E
7356.9'

3000'

WELL # 1-H

S 51°00' E
7356.9'

3000'

WELL # 1-H

S 51°00' E
7356.9'

3000'

WELL # 1-H

S 51°00' E
7356.9'

3000'

WELL # 1-H

S 51°00' E
7356.9'

3000'

WELL # 1-H

S 51°00' E
7356.9'

3000'

WELL # 1-H

S 51°00' E
7356.9'

3000'

WELL # 1-H

S 51°00' E
7356.9'

3000'

WELL # 1-H

S 51°00' E
7356.9'

3000'

WELL # 1-H

S 51°00' E
7356.9'

3000'

WELL # 1-H

S 51°00' E
7356.9'

3000'

WELL # 1-H

S 51°00' E
7356.9'

3000'

WELL # 1-H

S 51°00' E
7356.9'

3000'

WELL # 1-H

S 51°00' E
7356.9'

3000'

WELL # 1-H

S 51°00' E
7356.9'

3000'

WELL # 1-H

S 51°00' E
7356.9'

3000'

WELL # 1-H

S 51°00' E
7356.9'

3000'

WELL # 1-H

S 51°00' E
7356.9'

3000'

WELL # 1-H

S 51°00' E
7356.9'

3000'

WELL # 1-H

S 51°00' E
7356.9'

3000'

WELL # 1-H

S 51°00' E
7356.9'

3000'

WELL # 1-H

S 51°00' E
7356.9'

3000'

WELL # 1-H

S 51°00' E
7356.9'

3000'

WELL # 1-H

S 51°00' E
7356.9'

3000'

WELL # 1-H

S 51°00' E
7356.9'

3000'

WELL # 1-H

S 51°00' E
7356.9'

3000'

WELL # 1-H

S 51°00' E
7356.9'

3000'

WELL # 1-H

S 51°00' E
7356.9'

3000'

WELL # 1-H

S 51°00' E
7356.9'

3000'

WELL # 1-H

S 51°00' E
7356.9'

3000'

WELL # 1-H

S 51°00' E
7356.9'

3000'

WELL # 1-H

S 51°00' E
7356.9'

3000'

WELL # 1-H

S 51°00' E
7356.9'

3000'

WELL # 1-H

S 51°00' E
7356.9'

3000'

WELL # 1-H

S 51°00' E
7356.9'

3000'

WELL # 1-H

S 51°00' E
7356.9'

3000'

WELL # 1-H

S 51°00' E
7356.9'

3000'

WELL # 1-H

S 51°00' E
7356.9'

3000'

WELL # 1-H

S 51°00' E
7356.9'

3000'

WELL # 1-H

S 51°00' E
7356.9'

3000'

WELL # 1-H

S 51°00' E
7356.9'

3000'

WELL # 1-H

S 51°00' E
7356.9'

3000'

WELL # 1-H

S 51°00' E
7356.9'

3000'

WELL # 1-H

S 51°00' E
7356.9'

3000'

WELL # 1-H

S 51°00' E
7356.9'

3000'

WELL # 1-H

S 51°00' E
7356.9'

3000'

WELL # 1-H

S 51°00' E
7356.9'

3000'

WELL # 1-H

S 51°00' E
7356.9'

3000'

WELL # 1-H

S 51°00' E
7356.9'

3000'

WELL # 1-H

S 51°00' E
7356.9'

3000'

WELL # 1-H

S 51°00' E
7356.9'

3000'

WELL # 1-H

S 51°00' E
7356.9'

3000'

WELL # 1-H

S 51°00' E
7356.9'

3000'

WELL # 1-H

S 51°00' E
7356.9'

3000'

WELL # 1-H

S 51°00' E
7356.9'

3000'

WELL # 1-H

S 51°00' E
7356.9'

3000'

WELL # 1-H

S 51°00' E
7356.9'

3000'

WELL # 1-H

S 51°00' E
7356.9'

3000'

WELL # 1-H

S 51°00' E
7356.9'

3000'

WELL # 1-H

S 51°00' E
7356.9'

3000'

WELL # 1-H

S 51°00' E
7356.9'

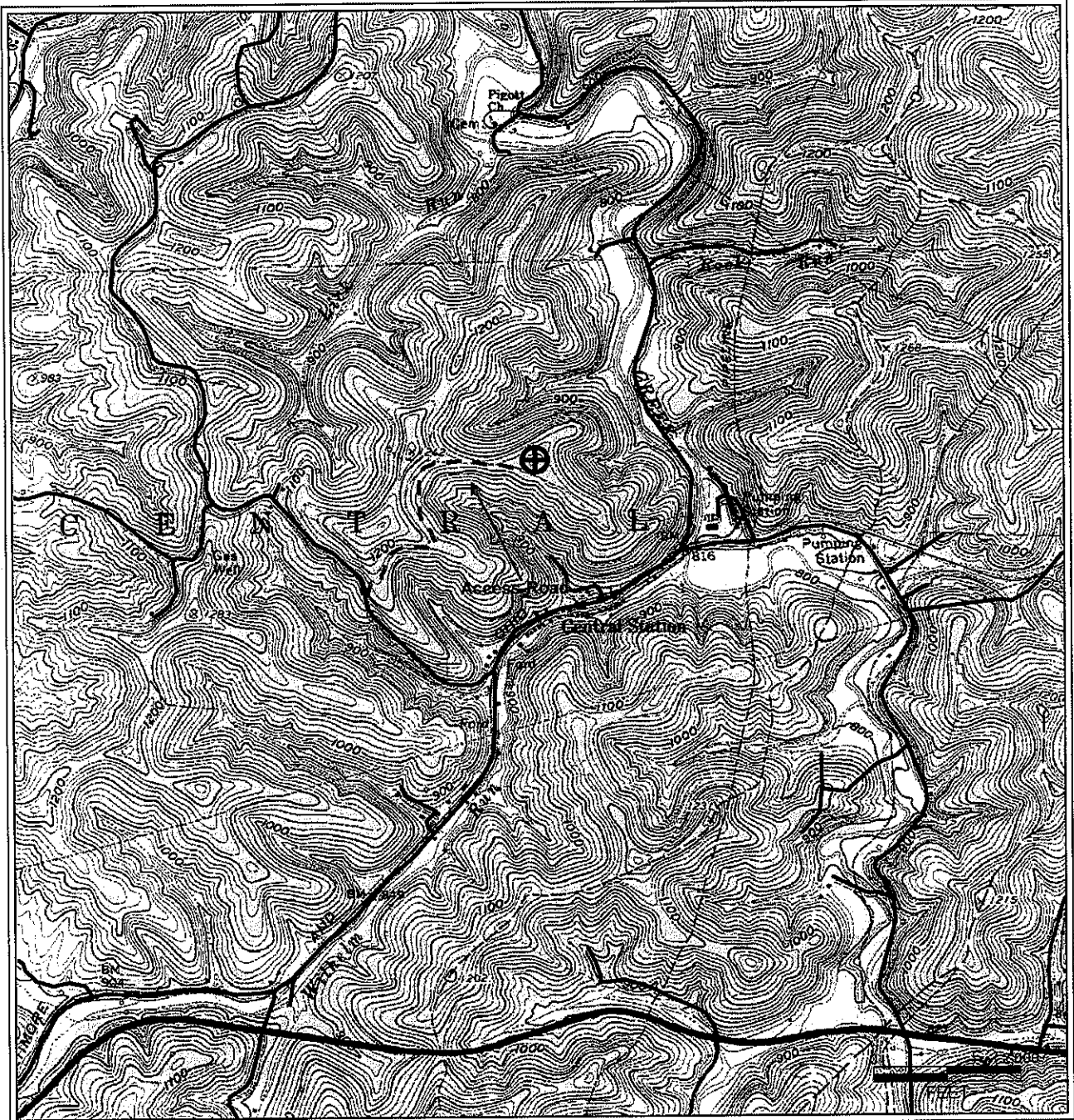
3000'

WELL # 1-H

S 51°00' E
7356.9'

3000'

17-0608346A



PETRA 1/4/2012 4:16:23 PM

Antero Resources Corporation
APPALACHIAN BASIN
Valentine Unit 1H Doddridge County
<p>0 2,000 4,000 FEET</p>
REMARKS QUADRANGLE: WEST UNION WATERSHED: ARNOLD CREEK DISTRICT: CENTRAL
Date: 01/04/2012

05/25/2012