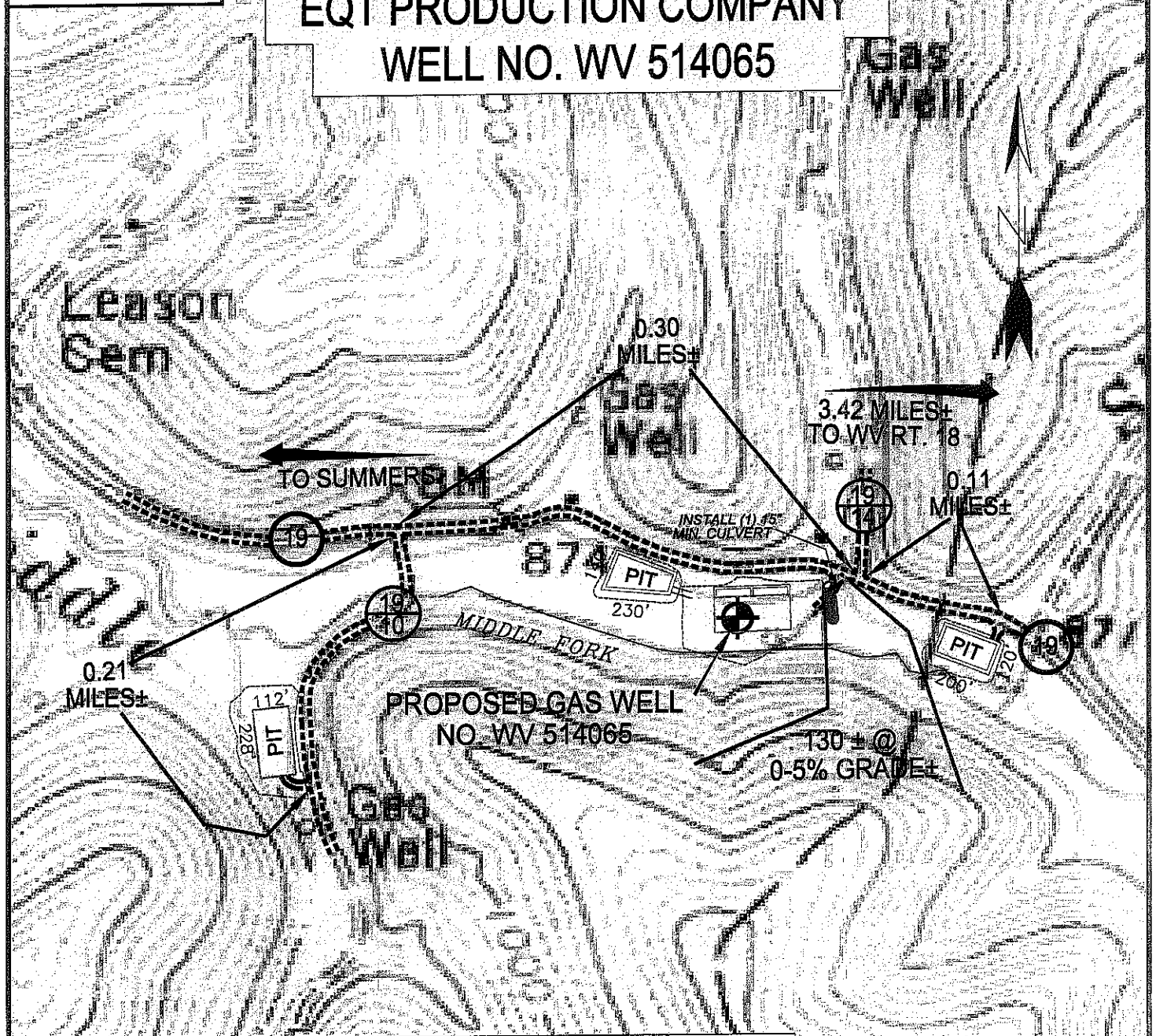
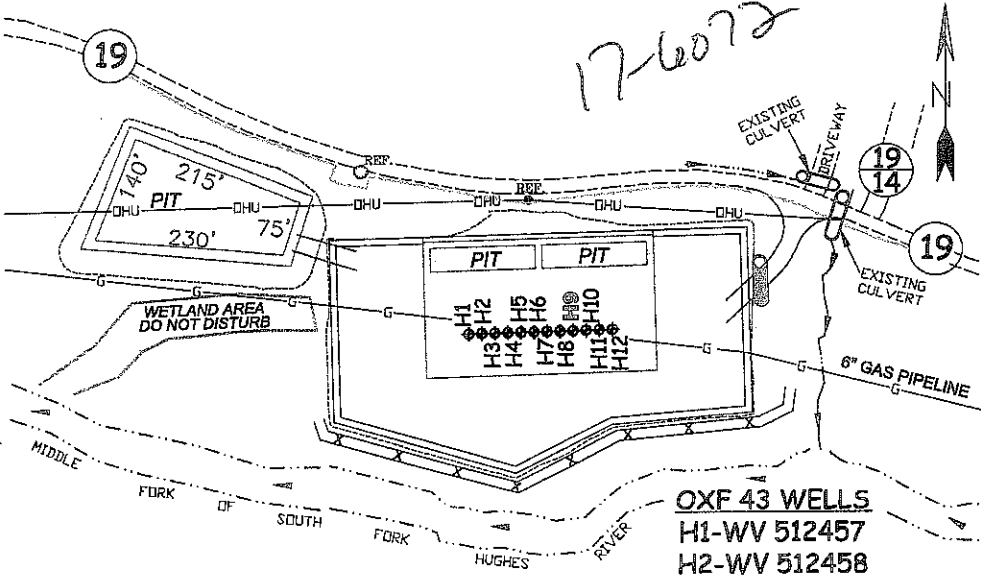


EQT PRODUCTION COMPANY WELL NO. WV 514065



Detail Sketch for Proposed Well WV 514065

NOT TO SCALE



SCALE: 1"=500'



ALL ROADS SHOWN HEREON ARE EXISTING UNLESS OTHERWISE NOTED AND SHALL BE MAINTAINED IN ACCORDANCE WITH WV D.E.P. OIL AND GAS BMP MANUAL ENTRANCES AT COUNTY/STATE ROADS SHALL BE MAINTAINED IN ACCORDANCE WITH WV D.O.T. REGULATION. SEPARATE PERMITS MAY BE REQUIRED BY THE D.O.T.

SEDIMENT BASINS (TRAPS) AND APPROPRIATE EROSION CONTROL BARRIERS ARE TO BE CONSTRUCTED AT ALL CULVERT AND CROSS DRAIN INLETS AND OUTLETS AS REQUIRED IN THE WV D.E.P. OIL AND GAS BMP MANUAL. FIELD CONDITIONS (ROCK OUTCROPS AND BEDROCK) MAY PROHIBIT INLET TRAPS BEING INSTALLED. WHEN THESE CONDITIONS EXIST ADDITIONAL EROSION CONTROL MEASURES SHALL BE EVALUATED AND UTILIZED AS NEEDED.

EARTHWORK CONTRACTORS ARE RESPONSIBLE FOR NOTIFICATION TO THE OPERATOR AND INSPECTOR PRIOR TO ANY DEVIATION FROM THIS PLAN.

TEMPORARY SEED & MULCH ALL SLOPES AFTER CONSTRUCTION OF LOCATION.

CUT & STACK ALL MARKETABLE TIMBER.

STACKED BRUSH MAY BE USED FOR SEDIMENT CONTROL.

APPLICATIONS FOR SEPARATE PLC PERMITS ON THE ACCESS ROAD STREAM CROSSINGS HAVE BEEN PREPARED (IF APPLIES).

- OXF 43 WELLS**
 H1-WV 512457
 H2-WV 512458
 H3-WV 512459
 H4-WV 512460
 H5-WV 513770
 H6-WV 513771
 H7-WV 513772
 H8-WV 514064
 H9-WV 514065
 H10-WV 514066
 H11-WV 514067
 H12-WV 514068

SLS

SMITH LAND SURVEYING, INC.
 P.O. BOX 150 GLENVILLE, WV. 26351
 PH: (304) 462-5634 FAX: (304) 462-5656 E-MAIL: sls@slssurveys.com

DRAWN BY K.D.W.	FILE NO. 6113	DATE 11/11/11	CADD FILE: 6113RECDW514065.DWG
--------------------	------------------	------------------	-----------------------------------

TOPO SECTION OF USGS
OXFORD 7.5' QUADRANGLE

= EXISTING CULVERT
 = PROPOSED CULVERT
 12" MIN. UNLESS OTHERWISE NOTED
 = PROPOSED STREAM CROSSING (IF APPLIES)
 *SEE TABLE FOR CULVERT DETAIL

07/13/2012