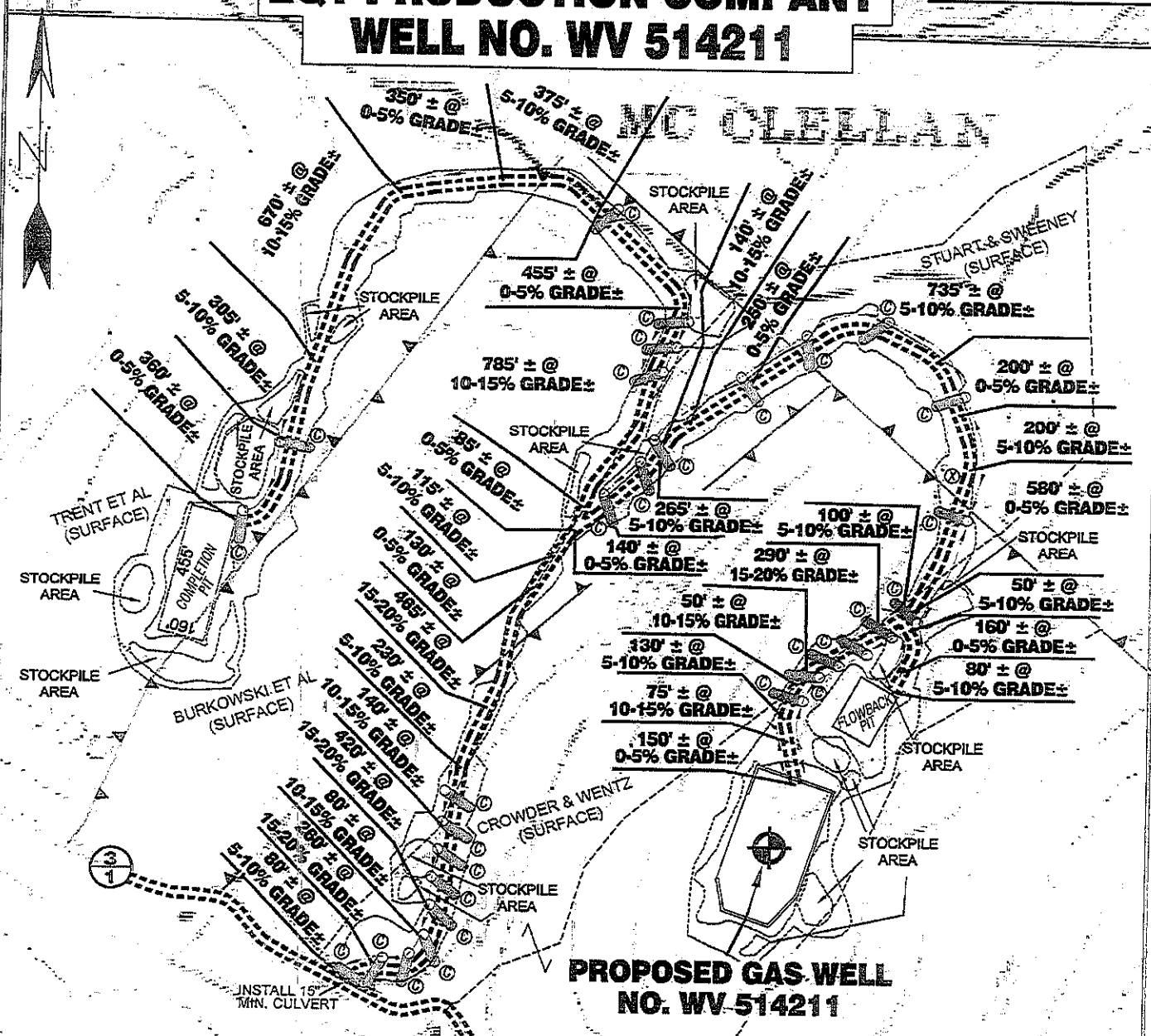
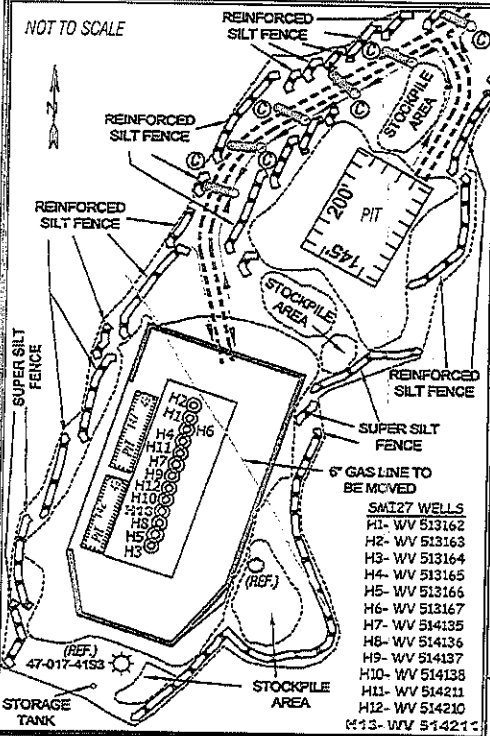


EQT PRODUCTION COMPANY WELL NO. WV 514211

6063
17-657

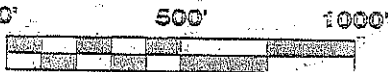


Detail Sketch for Proposed Well WV 514211



- SMI27 WELLS
- H1- WV 513162
 - H2- WV 513163
 - H3- WV 513164
 - H4- WV 513165
 - H5- WV 513166
 - H6- WV 513167
 - H7- WV 514135
 - H8- WV 514136
 - H9- WV 514137
 - H10- WV 514138
 - H11- WV 514211
 - H12- WV 514210
 - H13- WV 514211

SCALE: 1"=500'



ALL ROADS SHOWN HEREON ARE EXISTING UNLESS OTHERWISE NOTED AND SHALL BE MAINTAINED IN ACCORDANCE WITH WV D.E.P. OIL AND GAS BMP MANUAL ENTRANCES AT COUNTY/STATE ROADS SHALL BE MAINTAINED IN ACCORDANCE WITH WV D.O.T. REGULATION. SEPARATE PERMITS MAY BE REQUIRED BY THE D.O.T.

SEDIMENT BASINS (TRAPS) AND APPROPRIATE EROSION CONTROL BARRIERS ARE TO BE CONSTRUCTED AT ALL CULVERT AND CROSS DRAIN INLETS AND OUTLETS AS REQUIRED IN THE WV D.E.P. OIL AND GAS BMP MANUAL. FIELD CONDITIONS (ROCK OUTCROPS AND BEDROCK) MAY PROHIBIT INLET TRAPS BEING INSTALLED. WHEN THESE CONDITIONS EXIST ADDITIONAL EROSION CONTROL MEASURES SHALL BE EVALUATED AND UTILIZED AS NEEDED.

EARTHWORK CONTRACTORS ARE RESPONSIBLE FOR NOTIFICATION TO THE OPERATOR AND INSPECTOR PRIOR TO ANY DEVIATION FROM THIS PLAN.

TEMPORARY SEED & MULCH ALL SLOPES AFTER CONSTRUCTION OF LOCATION.

CLUT & STACK ALL MARKETABLE TIMBER.

STACKED BRUSH MAY BE USED FOR SEDIMENT CONTROL

APPLICATIONS FOR SEPARATE PLC PERMITS ON THE ACCESS ROAD STREAM CROSSINGS HAVE BEEN PREPARED (IF APPLIES).

- = EXISTING CULVERT
- = PROPOSED CULVERT 12" MIN. UNLESS OTHERWISE NOTED
- = PROPOSED PLC PERMIT
- = APPROXIMATE DISTURBANCE AREA

SMITH LAND SURVEYING, INC.
P.O. BOX 150 GLENVILLE, WV, 26351
PH: (304)462-5634 FAX: (304)462-5656 E-MAIL: sls@slsurvey.com

DRAWN BY: K.D.W. FILE NO.: 7584 DATE: 05/16/12 CADD FILE: 7584REC\WV514211R.DWG

TOPO SECTION OF USGS
SMITHBURG 7.5' QUADRANGLE