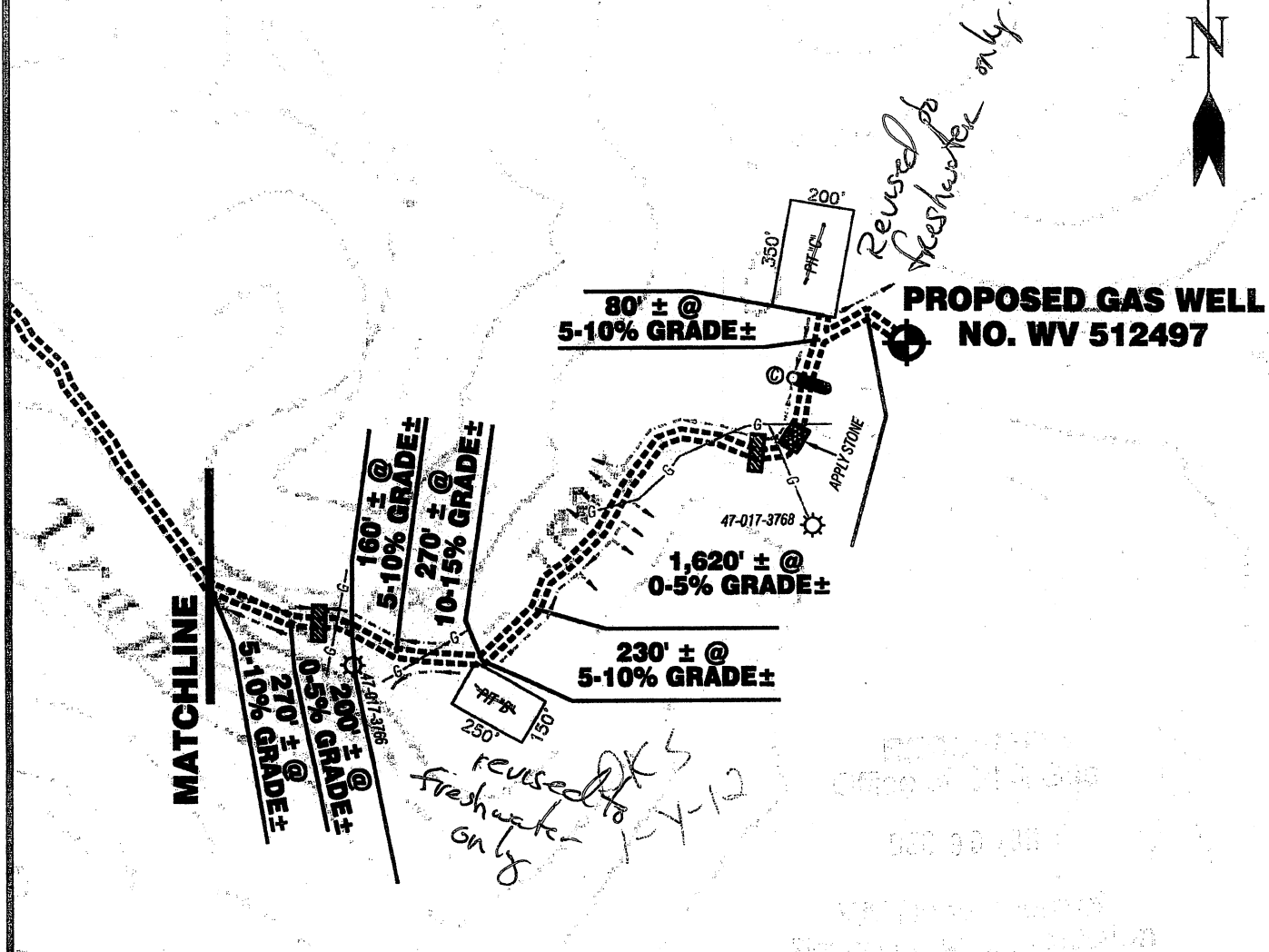
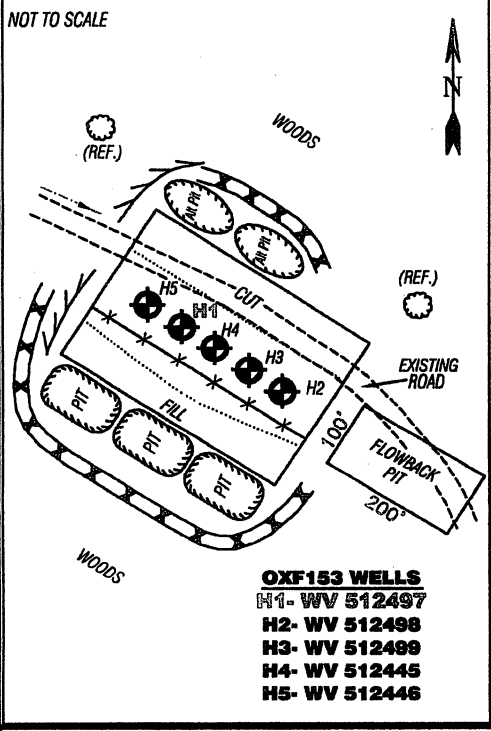


EAE / MAXWELL LEASE WELL NO. WV 512497



Detail Sketch for Proposed Wells WV 512497



SCALE: 1"=500'



ALL ROADS SHOWN HEREON ARE EXISTING UNLESS OTHERWISE NOTED AND SHALL BE MAINTAINED IN ACCORDANCE WITH WV D.E.P. OIL AND GAS BMP MANUAL ENTRANCES AT COUNTY/STATE ROADS SHALL BE MAINTAINED IN ACCORDANCE WITH WV D.O.T. REGULATION. SEPARATE PERMITS MAY BE REQUIRED BY THE D.O.T.

SEDIMENT BASINS (TRAPS) AND APPROPRIATE EROSION CONTROL BARRIERS ARE TO BE CONSTRUCTED AT ALL CULVERT AND CROSS DRAIN INLETS AND OUTLETS AS REQUIRED IN THE WV D.E.P. OIL AND GAS BMP MANUAL. FIELD CONDITIONS (ROCK OUTCROPS AND BEDROCK) MAY PROHIBIT INLET TRAPS BEING INSTALLED. WHEN THESE CONDITIONS EXIST ADDITIONAL EROSION CONTROL MEASURES SHALL BE EVALUATED AND UTILIZED AS NEEDED.

EARTHWORK CONTRACTORS ARE RESPONSIBLE FOR NOTIFICATION TO THE OPERATOR AND INSPECTOR PRIOR TO ANY DEVIATION FROM THIS PLAN.

TEMPORARY SEED & MULCH ALL SLOPES AFTER CONSTRUCTION OF LOCATION.

CUT & STACK ALL MARKETABLE TIMBER.

STACKED BRUSH MAY BE USED FOR SEDIMENT CONTROL.

APPLICATIONS FOR SEPARATE PLC PERMITS ON THE ACCESS ROAD STREAM CROSSINGS HAVE BEEN PREPARED (IF APPLIES).

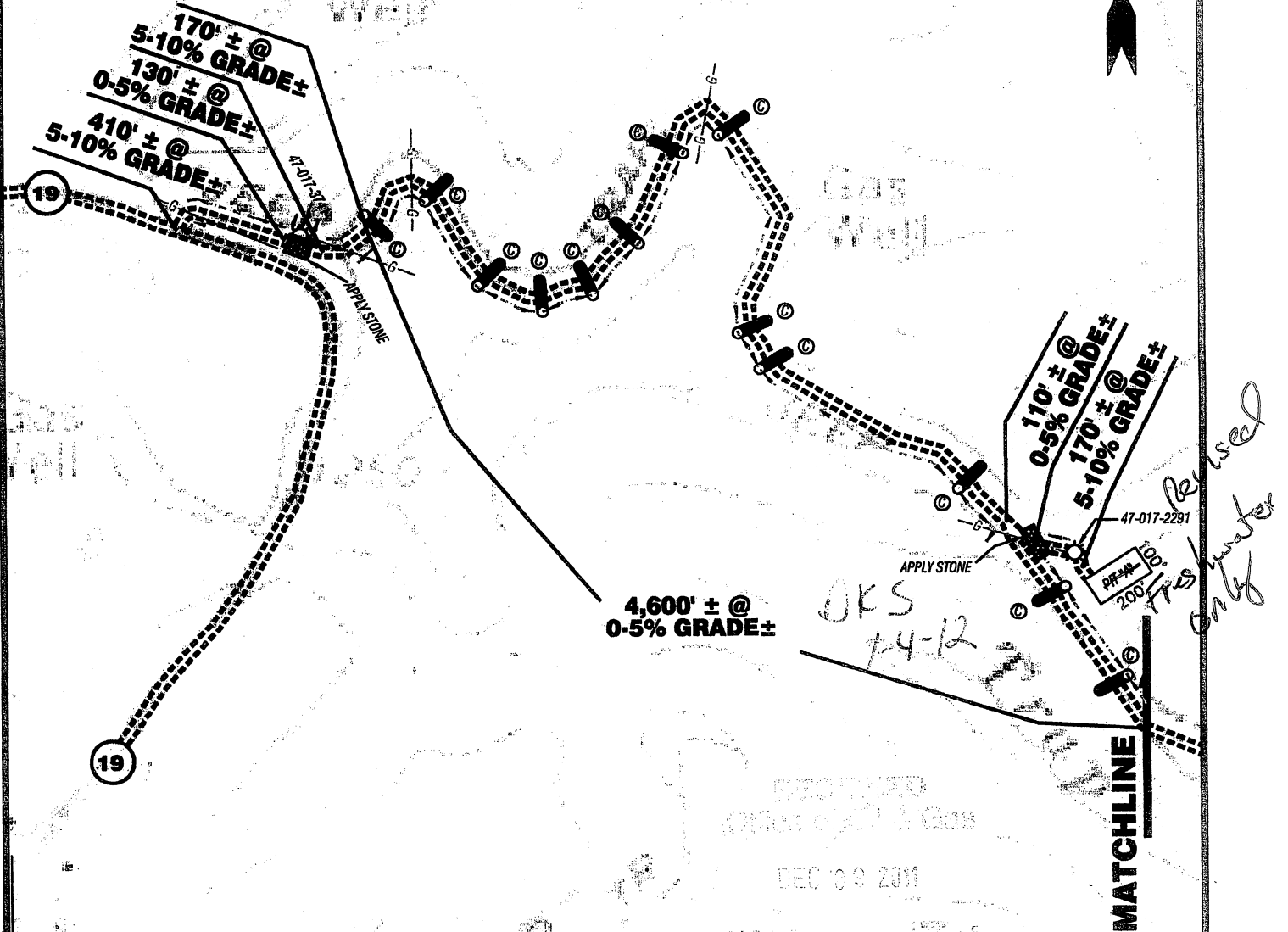
- = EXISTING CULVERT
 - = PROPOSED CULVERT 15' MIN. UNLESS OTHERWISE NOTED
 - = PROPOSED STREAM CROSSING (IF APPLIES)
 - = EXISTING BROAD BASED CROSS DITCH
- *SEE TABLE FOR CULVERT DETAIL

| | |
|--|----------------|
| TOPO SECTION OF USGS OXFORD 7.5' QUADRANGLE | |
| PROPOSED CULVERT INVENTORY (FOR BID PURPOSES ONLY) | |
| 12" (MINIMUM) CULVERTS | 14 CUL. |
| ADDITIONAL CULVERTS AND/OR OTHER DRAINAGE STRUCTURES & SEDIMENT CONTROL DEVICES MAY BE REQUIRED BY THE WV D.E.P. OIL & GAS INSPECTOR. OPERATOR IS RESPONSIBLE FOR COORDINATION WITH CONTRACTOR AND SLS REGARDING ANY CHANGES OR ADDITIONS THE STATE MAY REQUIRE. | |
| Projected Earthen Disturbance Area | |
| Well Location Site | 5.00 ac. +/- |
| Well Access Road | 2.78 ac. +/- |
| Pit Location Site (3) | 2.93 ac. +/- |
| Pit Access Road | 0.12 ac. +/- |
| Approximate Total Disturbance | 10.83 ac. +/- |

SMITH LAND SURVEYING, INC.
 P.O. BOX 150 GLENVILLE, WV, 26351
 PH: (304) 462-5634 FAX: (304) 462-5656 E-MAIL: sls@rtol.net

| | | | |
|--------------------|------------------|------------------|------------------------------------|
| DRAWN BY C.J.P. | FILE NO. 7204 | DATE 10/27/09 | CADD FILE: 7204REC\WV512497.dwg |
|--------------------|------------------|------------------|------------------------------------|

EAE / MAXWELL LEASE WELL NO. WV 512497



PROPOSED
OIL AND GAS
DEC 09 2011

SCALE: 1"=500'



**TOPO SECTION OF USGS
OXFORD 7.5' QUADRANGLE**

**PROPOSED CULVERT INVENTORY
(FOR BID PURPOSES ONLY)**

| | |
|--|---------------|
| 12" (MINIMUM) CULVERTS | 0 CUL. |
| ADDITIONAL CULVERTS AND/OR OTHER DRAINAGE STRUCTURES & SEDIMENT CONTROL DEVICES MAY BE REQUIRED BY THE WV D.E.P. OIL & GAS INSPECTOR. OPERATOR IS RESPONSIBLE FOR COORDINATION WITH CONTRACTOR AND SLS REGARDING ANY CHANGES OR ADDITIONS THE STATE MAY REQUIRE. | |
| Projected Earthen Disturbance Area | |
| Well Location Site | 0.00 ac. +/- |
| Access Road | 0.00 ac. +/- |
| Approximate Total Disturbance | 0.00 ac. +/- |

ALL ROADS SHOWN HEREON ARE EXISTING UNLESS OTHERWISE NOTED AND SHALL BE MAINTAINED IN ACCORDANCE WITH WV D.E.P. OIL AND GAS BMP MANUAL ENTRANCES AT COUNTY/STATE ROADS SHALL BE MAINTAINED IN ACCORDANCE WITH WV D.O.T. REGULATION. SEPARATE PERMITS MAY BE REQUIRED BY THE D.O.T.

SEDIMENT BASINS (TRAPS) AND APPROPRIATE EROSION CONTROL BARRIERS ARE TO BE CONSTRUCTED AT ALL CULVERT AND CROSS DRAIN INLETS AND OUTLETS AS REQUIRED IN THE WV D.E.P. OIL AND GAS BMP MANUAL. FIELD CONDITIONS (ROCK OUTCROPS AND BEDROCK) MAY PROHIBIT INLET TRAPS BEING INSTALLED. WHEN THESE CONDITIONS EXIST ADDITIONAL EROSION CONTROL MEASURES SHALL BE EVALUATED AND UTILIZED AS NEEDED.

EARTHWORK CONTRACTORS ARE RESPONSIBLE FOR NOTIFICATION TO THE OPERATOR AND INSPECTOR PRIOR TO ANY DEVIATION FROM THIS PLAN.

TEMPORARY SEED & MULCH ALL SLOPES AFTER CONSTRUCTION OF LOCATION.

CUT & STACK ALL MARKETABLE TIMBER.

STACKED BRUSH MAY BE USED FOR SEDIMENT CONTROL.

APPLICATIONS FOR SEPARATE PLC PERMITS ON THE ACCESS ROAD STREAM CROSSINGS HAVE BEEN PREPARED (IF APPLIES).

- = EXISTING CULVERT
- = PROPOSED CULVERT 15' MIN. UNLESS OTHERWISE NOTED
- = PROPOSED STREAM CROSSING (IF APPLIES) *SEE TABLE FOR CULVERT DETAIL

SLS
SMITH LAND SURVEYING, INC.
P.O. BOX 150 GLENVILLE, WV. 26351
PH: (304) 462-5634 FAX: (304) 462-5656 E-MAIL: sls@tcl.net

| | | | |
|--------------------|------------------|------------------|------------------------------------|
| DRAWN BY C.J.P. | FILE NO. 7204 | DATE 10/27/09 | CADD FILE: 7204REC\WV512497.dwg |
|--------------------|------------------|------------------|------------------------------------|