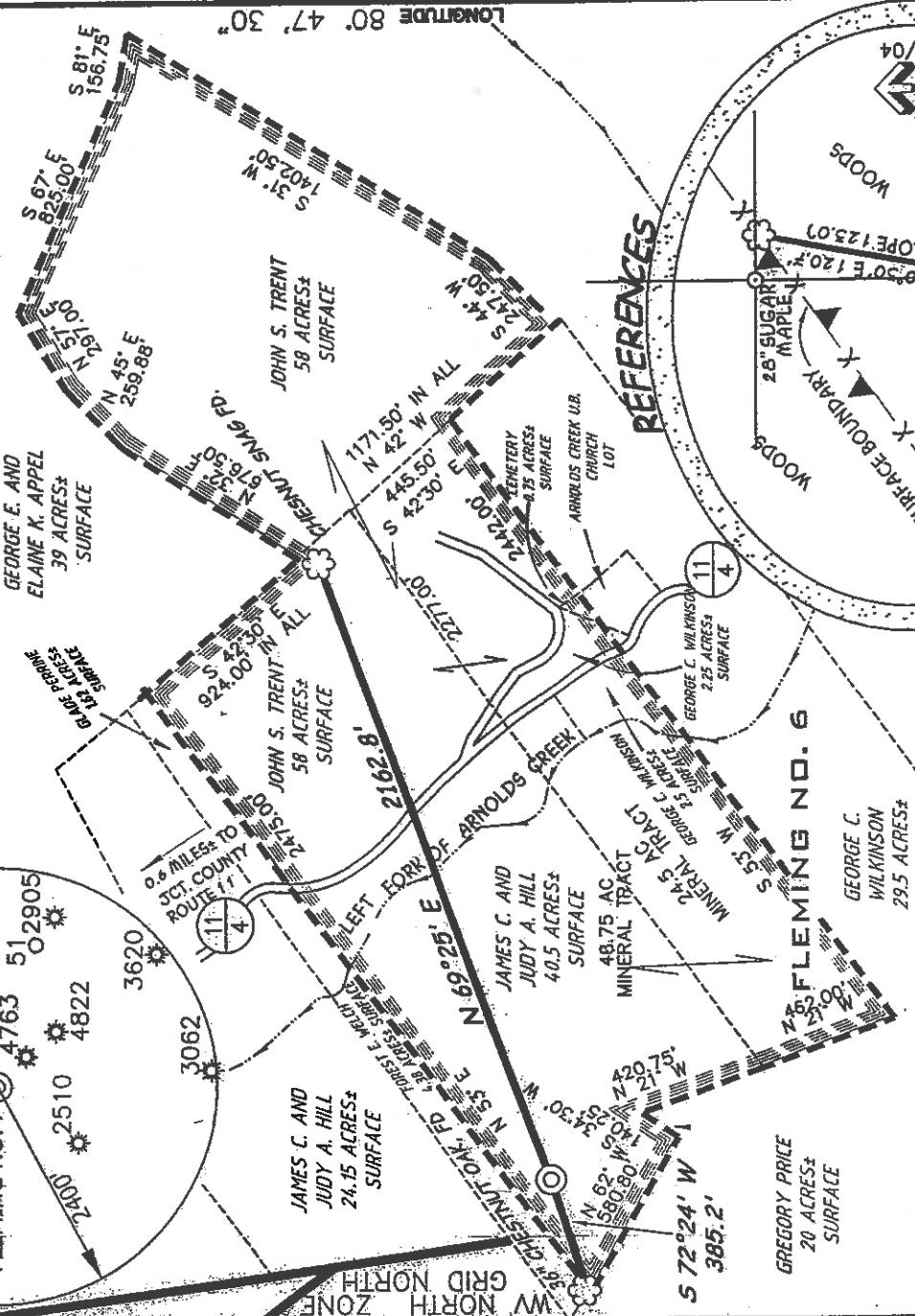
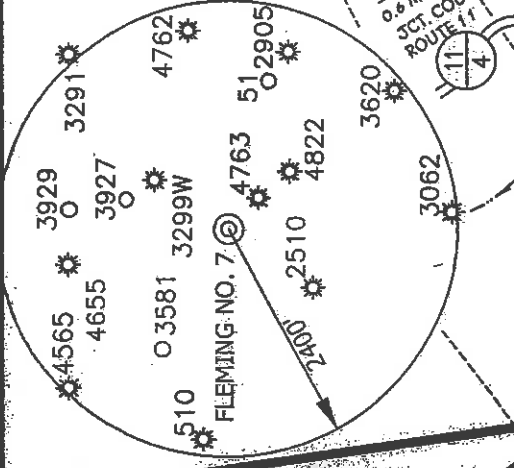


SURVEYED LONG. 80° 48' 08.9"

LATITUDE 39° 17' 30"

# FLEMING LEASE ± 108.75 ACRES ± WELL NO. 7

PROPOSED WELL  
STATE PLANE NAD 27  
COORDINATES  
N) 280439  
E) 1631215

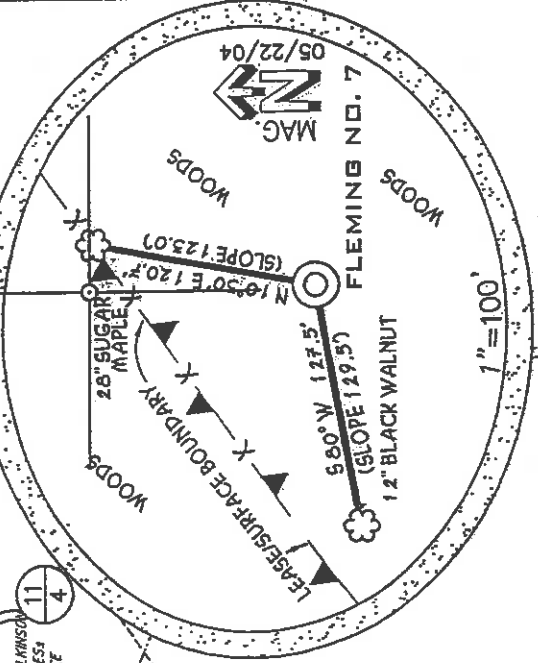


10660

LONGITUDE 80° 47' 30"

SURVEYED LAT. 39° 15' 45.5"

### REFERENCES



### REFERENCE NOTES

LEASE AS SHOWN TAKEN FROM DEED BOOK 107 ON PAGE 77.

OWNERSHIP TAKEN FROM PUBLIC RECORDS OF DODDRIDGE COUNTY, WV IN APRIL, 2004.

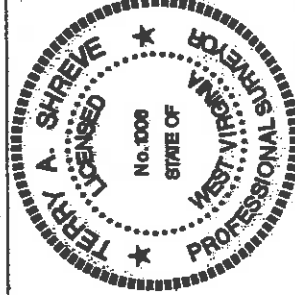
LAT./LONG. BY DIFFERENTIAL SUBMETER MAPPING GRADE GPS

(X) DENOTES LOCATION ON UNITED STATES TOPOGRAPHIC MAPS

FILE NUMBER 030022  
DRAWING NUMBER WF7(W2-15)  
SCALE 1"=600'  
MINIMUM DEGREE OF ACCURACY 1/200  
PROVEN SOURCE OF ELEVATION JUNCTION OF ROADS ELEVATION 816'

I, THE UNDERSIGNED, HEREBY CERTIFY THAT THIS PLAN IS CORRECT TO THE BEST OF MY KNOWLEDGE AND BELIEF AND SHOWS ALL THE INFORMATION REQUIRED BY LAW AND THE REGULATIONS ISSUED AND PRESCRIBED BY THE DEPARTMENT OF ENVIRONMENTAL PROTECTION

P.S. Terry A. Shreve  
1006



STATE OF WEST VIRGINIA  
DIVISION OF ENVIRONMENTAL PROTECTION  
OFFICE OF OIL AND GAS

WELL TYPE: OIL  GAS  LIQUID INJECTION  WASTE DISPOSAL   
(IF 'GAS') PRODUCTION  STORAGE  DEEP  SHALLOW

LOCATION ELEVATION 1064' WATERBORN WEST UNION COUNTY DODDRIDGE  
DISTRICT WEST UNION

QUADRANGLE WEST UNION 7.5' LEASE NUMBER \_\_\_\_\_  
SURFACE OWNER JAMES C. AND JUDY HILL ACREAGE 40.5 AC±  
OIL & GAS ROYALTY OWNER THOMAS J. FLEMING HEIRS LEASE ACREAGE 108.75 AC±

PROPOSED WORK: DRILL  CONVERT  DEEPER  REDRILL  FRACTURE OR STIMULATE  PLUG OFF OLD FORMATION   
PERFORATE NEW FORMATION  OTHER PHYSICAL CHANGE (SPECIFY) \_\_\_\_\_

TARGET FORMATION GORDON ESTIMATED DEPTH 3000'  
PLUG & ABANDON  CLEAN OUT & REPLUG

WELL OPERATOR KEY OIL COMPANY DESIGNATED AGENT JAN CHAPMAN  
ADDRESS 22 GARTON PLAZA WESTON, WV 26452 ADDRESS 22 GARTON PLAZA WESTON, WV 26452

DATE: MAY 22, 2004

OPERATORS WELL NO. FLEMING NO. 7

API WELL NO. 47-017-04851

STATE COUNTY PERMIT

COUNTY NAME

PERMIT

D000 4851

b-b (133)

State of West Virginia  
Division of Environmental Protection  
Section of Oil and Gas

*Art*

Well Operator's Report of Well Work

Farm Name: JAMES C. & JUDY HILL

Operator Well No. : FLEMING #7

LOCATION: Elevation: 1064'

Quadrangle: WEST UNION

District: WEST UNION

County: DODDRIDGE

Latitude: 10660 Feet South of 39 Deg. 17 Min. 30 Sec.  
Longitude: 3055 Feet West of 80 Deg. 47 Min. 30 Sec.

Company: KEY OIL COMPANY  
22 GARTON PLAZA  
WESTON, WV 26452-0000

Agent: JAN CHAPMAN

Inspector: MIKE UNDERWOOD  
Permit Issued: 07/27/04  
Well Work Commenced: 10/12/04  
Well Work Completed: 10/14/04

Verbal Plugging  
Permission granted on: \_\_\_\_\_  
Rotary X Cable \_\_\_\_\_ Rig  
Total Depth ( feet ) 2744'  
Fresh water depths ( ft ) 144'  
Salt water depths ( ft ) NONE

Is coal being mined in area ( Y / N )? N  
Coal Depths ( ft ) : NONE

OPEN FLOW DATA

Casing & Tubing Size	Used in Drilling	Left in Well	Cement Fill Up Cu. Ft.
8 5/8"	1084'	1084'	240 sks To Surface
4 1/2"	2689'	2689'	250 sks.

Producing formation Big Injun Gordon Pay zone depth ( ft ) 1944' - 2024'  
Gas: Initial open flow \_\_\_\_\_ MCF / d Odor \_\_\_\_\_ Oil: Initial open flow \_\_\_\_\_ Bbl / d  
Final open flow 1,958 MCF / d Oil: Final open flow show Bbl / d  
Time of open flow between initial and final tests N/A Hours  
Static rock pressure 195 psig ( surface pressure ) after 96 Hours

Second producing formation \_\_\_\_\_ Pay zone depth ( ft ) \_\_\_\_\_  
Gas: Initial open flow Commingled MCF / d Oil: Initial open flow \_\_\_\_\_ Bbl / d  
Final open flow Commingled MCF / d Oil: Final open flow \_\_\_\_\_ Bbl / d  
Time of open flow between initial and final tests \_\_\_\_\_ Hours  
Static rock pressure \_\_\_\_\_ psig ( surface pressure ) after \_\_\_\_\_ Hours

NOTE: ON BACK OF THIS FORM PUT THE FOLLOWING: 1). DETAILS OF PERFORATED INTERVALS, FRACTURING OR STIMULATING, PHYSICAL CHANGE, ETC. 2). THE WELL LOG WHICH IS A SYSTEMATIC DETAILED GEOLOGICAL RECORD OF ALL FORMATIONS, INCLUDING COAL ENCOUNTERED BY THE WELLBORE.

For: KEY OIL COMPANY

By: *Jan Chapman*  
Date: March 28, 2005

RECEIVED  
Office of Oil & Gas  
Office of Chief  
APR 0 4 2005  
WV Department of  
Environmental Protection

*D000 4851*

MAY 27 2005

Fleming #7 (47-017-4851)

Two Stage Foam Frac – BJ Services

1<sup>st</sup> Stage: Gordon ( 15 holes ) ( 2610' to 2666' )

60 Quality Foam,  
500 gal. 15% HCL., 30,000# 20/40 sand,  
250,000 SCF N<sub>2</sub>, 275 bbis foam

2<sup>nd</sup> Stage: Big Injun ( 24 holes ) ( 1967' to 2020' )

60 Quality Foam,  
750 gal 15% HCl, 25,000# 20/40 sand,  
335,000 SCF N<sub>2</sub>, 310 bbis foam

1/2" water @ 144'

WELL LOG

KB	0	10
Fill	10	16
Shale	16	105
Sand & Shale	105	111
Sand	111	142
Red Rock	142	171
Sand & Shale	171	230
Red Rock	230	252
Sand & Shale	252	270
Sand	270	327
Sand & Shale	327	420
Sand	420	460
Sand & Shale	460	700
Red Rock	700	789
Sand & Shale	789	884
Red Rock	884	935
Sand & Shale	935	1830
Little Lime	1830	1873
Big Lime	1873	1944
Big Injun	1944	2630
Shale	2630	2179
Weir	2179	2294
Shale	2294	2572
Gordon	2572	2630
Sand & Shale	2630	2744
TD	2744	

Gas Checks  
1506' – Oil Odor  
2550' - Odor

MAY 27 2009