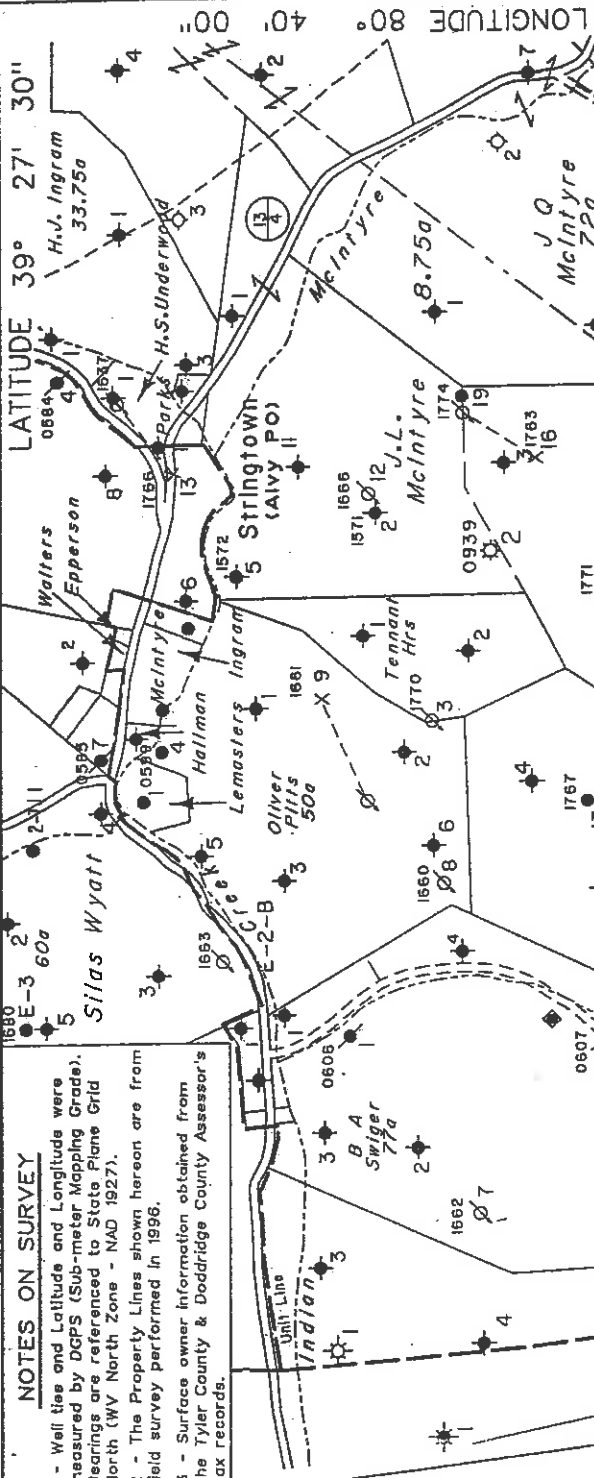


Longitude - 80° 41'42.8"

8,050'

NOTES ON SURVEY

- 1 - Well ties and Latitude and Longitude were measured by DGPS (Sub-meter Mapping Grade). Bearings are referenced to State Plane Grid North (WV North Zone - NAD 1927).
- 2 - The Property Lines shown herein are from field survey performed in 1996.
- 3 - Surface owner information obtained from the Tyler County & Doddridge County Assessor's tax records.



10,000'

Latitude - 39° 25'51.0"

Call Table

- A S20°W 62 P.
- B S61°14'E 709.5'
- C N77°47'E 594.0'
- D N60°34'E 701.0'
- E N19°W 40 P.

WELL TIES

- ① S84°24'E 3,175'
- ② N89°09'E 2,544'
- ③ S34°01'E 1,498'

LOCATION REFERENCES  
(Mag. Bearings - Slope Dist.)

- N55°E 93' 14" Poplar
- N70°W 104' 24" White Oak

NOTE: No Known Water Supply Sources Are Located Within 1000' Of Proposed Well.

(+) DENOTES LOCATION OF WELL ON UNITED STATES TOPOGRAPHIC MAPS

FILE NO. 1039-31

MAP NO. N47°N S 2 E W 5

SCALE 1" = 1000'

MINIMUM DEGREE OF

ACCURACY 1 in 200

PROVEN SOURCE OF

ELEVATION DGPS Survey

I THE UNDERSIGNED, HEREBY CERTIFY THAT THIS PLAT IS CORRECT TO THE BEST OF MY KNOWLEDGE AND BELIEF AND SHOWS ALL THE INFORMATION REQUIRED BY LAW AND THE REGULATIONS ISSUED AND PRESCRIBED BY THE DEPARTMENT OF MINES.

(SIGNED)

*Timothy P. Roush*

TIMOTHY P. ROUSH PS 793

WEST VIRGINIA

Division of Environmental Protection  
Office of Oil and Gas  
1356 Hansford St.  
Charleston, West Virginia 25301



DATE June 2, 2004

FARM Dorsey Baker Hrs. NO. 18

API WELL NO.

47-017-04846

WELL TYPE: OIL  GAS  LIQUID INJECTION  WASTE DISPOSAL   
(IF "GAS") PRODUCTION  STORAGE  DEEP  SHALLOW

LOCATION: ELEVATION 1,296' WATERSHED Laughery Fork  
DISTRICT McGlellan COUNTY Doddridge

QUADRANGLE Centerpoint 7.5'  
SURFACE OWNER Dorsey Baker Hrs. et al. ACREAGE 139.81 Ac.

OIL & GAS ROYALTY OWNER East Resources, Inc. et al. LEASE NO. 13130-50  
LEASE ACREAGE 150 Ac.

PROPOSED WORK: DRILL  CONVERT  DRILL DEEPER  REDRILL  FRACTURE OR  
STIMULATE  PLUG OFF OLD FORMATION  PERFORATE NEW  
FORMATION  OTHER PHYSICAL CHANGE IN WELL (SPECIFY) \_\_\_\_\_

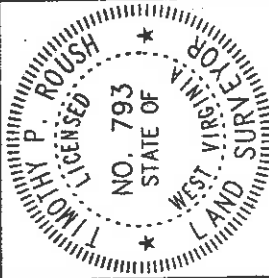
PLUG AND ABANDON  CLEAN OUT AND REPLUG   
TARGET FORMATION Gordon ESTIMATED DEPTH 3,300'

WELL OPERATOR East Resources, Inc. DESIGNATED AGENT Philip S. Ondrusek  
ADDRESS P. O. Box 5519 ADDRESS P. O. Box 5519  
Vienna, W.Va. 26105 Vienna, W.Va. 26105

6-6 (95)

JUN 2 5 2004

0000 4846



State of West Virginia  
Division of Environmental Protection  
Section of Oil and Gas

Well Operator's Report of Well Work

Farm name: BAKER, DORSEY- HEIRS Operator Well No.: D. BAKER 18

LOCATION: Elevation: 1,296.00 Quadrangle: CENTERPOINT 7.5

District: MCELROY County: TYLER  
Latitude: 10,000 Feet south of 39 Deg 27 Min 30 Sec.  
Longitude: 8,050 Feet west of 80 Deg 40 Min 00 Sec.

Company: EAST RESOURCES, INC.  
P.O. BOX 5519  
VIENNA, WV 26105-5519

Agent: PHILIP S. ONDRUSEK

Inspector: MIKE UNDERWOOD  
Permit Issued: 06/23/04  
Well work Commenced: 07/14/04  
Well work Completed: 08/04/04

Verbal plugging permission granted on: \_\_\_\_\_  
Rotary  Cable Rig \_\_\_\_\_  
Total Depth (feet) 3350  
Fresh water depths (ft) NA  
Salt water depths (ft) 2370

Is coal being mined in area (Y/N) N  
Coal Depths (ft): NA

RECEIVED  
Office of Oil & Gas  
Office of Chief  
OCT 20 2004  
WV Department of  
Environmental Protection

OPEN FLOW DATA

\* WATERFLOOD PRODUCER

Producing formation	Gordon		Pay zone depth (ft)
	MCF/d	Oil: Initial open flow	
Gas: Initial open flow	*		3152-3172
Final open flow	*		* Bbl/d
Time of open flow between initial and final tests			Hours
Static rock pressure	psig (surface pressure) after		Hours
Second producing formation			Pay zone depth (ft)
Gas: Initial open flow	MCF/d	Oil: Initial open flow	Bbl/d
Final open flow	MCF/d	Final open flow	Bbl/d
Time of open flow between initial and final tests			Hours
Static rock pressure	psig (surface pressure) after		Hours

NOTE: ON BACK OF THIS FORM, PUT THE FOLLOWING: 1) DETAILS OF PERFORATED INTERVALS, FRACTURING OR STIMULATING, PHYSICAL CHANGE, ETC. 2) THE WELL LOG WHICH IS A SYSTEMATIC DETAILED GEOLOGICAL RECORD OF ALL FORMATIONS, INCLUDING COAL ENCOUNTERED BY THE WELLBORE.

For: EAST RESOURCES, INC. *[Signature]*  
By: *[Signature]*  
Date: 10/19/04

0000 4846

Treatment: Treated perforations 3158'-3172' with 250 gals 15% HCL, 300 bbls cross linked gel, and 14,000# 20/40 sand

<u>Well Log:</u>	0	448	
	448	470	Sand and Shale
	470	514	Sand
	514	536	Shale
	536	660	sand
	660	682	Shale
	682	928	sand
	928	974	Shale
	974	1098	sand
	1098	1106	Shale
	1106	1152	sand
	1152	1186	Shale
	1186	1540	sand
	1540	1550	Shale
	1550	1790	sand
	1790	1820	Shale
	1820	1882	sand
	1882	1906	Shale
	1906	2022	sand
	2022	2054	Shale
	2054	2328	Big Lime
	2328	2428	Big Injun
	2428	2582	Shale
	2582	3130	Gordon Stray
	3130	3152	Gordon
	3152	3172	Shale
	3172	3350	TD
	3350		

2005 07 07

JAN 07 2005