

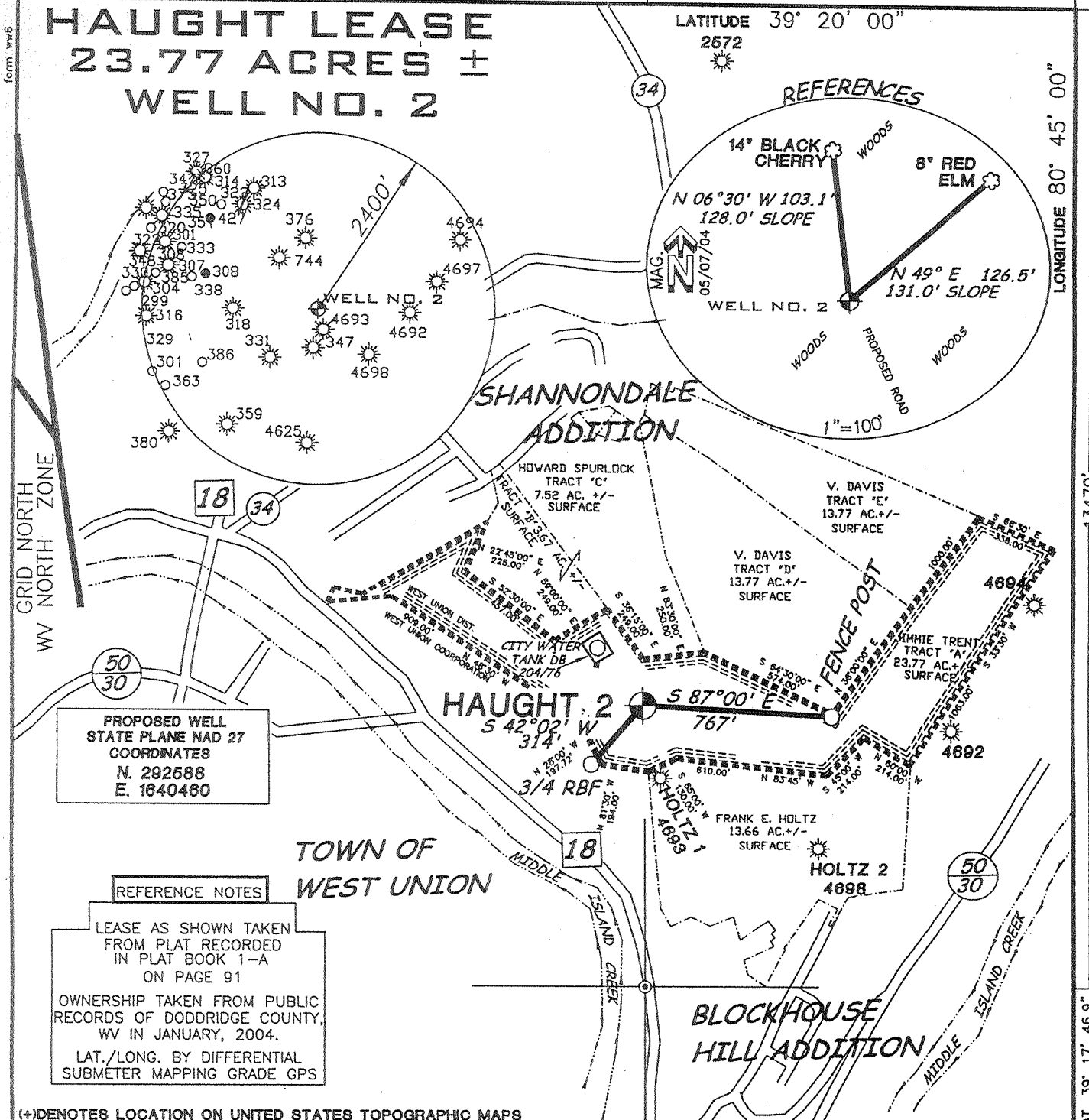
SURVEYED LONG.
80° 46' 13.6"

5790'

LATITUDE 39° 20' 00"
2572

LONGITUDE 80° 45' 00"

HAUGHT LEASE 23.77 ACRES ± WELL NO. 2



PROPOSED WELL
STATE PLANE NAD 27
COORDINATES
N. 292588
E. 1640460

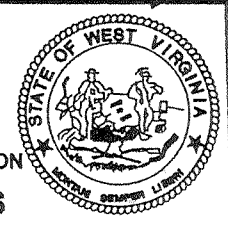
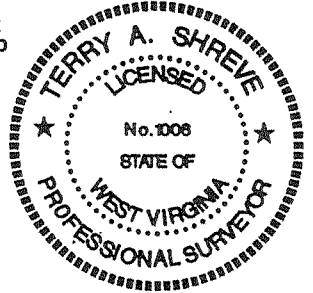
REFERENCE NOTES
LEASE AS SHOWN TAKEN
FROM PLAT RECORDED
IN PLAT BOOK 1-A
ON PAGE 91
OWNERSHIP TAKEN FROM PUBLIC
RECORDS OF DODDRIDGE COUNTY,
WV IN JANUARY, 2004.
LAT./LONG. BY DIFFERENTIAL
SUBMETER MAPPING GRADE GPS

(+) DENOTES LOCATION ON UNITED STATES TOPOGRAPHIC MAPS

I THE UNDERSIGNED HEREBY CERTIFY THAT THIS PLAT IS CORRECT TO THE BEST OF MY KNOWLEDGE AND BELIEF AND SHOWS ALL THE INFORMATION REQUIRED BY LAW AND THE REGULATIONS ISSUED AND PRESCRIBED BY THE DEPARTMENT OF ENVIRONMENTAL PROTECTION

P.S. 1008

Terry A. Shreve



FILE NUMBER 040062
DRAWING NUMBER WP2R2(W2-14)
SCALE 1"=600'
MINIMUM DEGREE OF ACCURACY 1/200
PROVEN SOURCE OF ELEVATION TOP OF KNOB
ELEVATION 1235'

STATE OF WEST VIRGINIA
DIVISION OF ENVIRONMENTAL PROTECTION
OFFICE OF OIL AND GAS

DATE: MAY 7, 2004

OPERATORS WELL NO. HAUGHT No. 2

API WELL NO.

47-017 04841
STATE COUNTY PERMIT

WELL TYPE: OIL ___ GAS LIQUID INJECTION ___ WASTE DISPOSAL ___
(IF "GAS") PRODUCTION ___ STORAGE ___ DEEP ___ SHALLOW
LOCATION ELEVATION 1102' WATERSHED MIDDLE ISLAND CREEK
DISTRICT WEST UNION COUNTY DODDRIDGE
QUADRANGLE WEST UNION 7.5 LEASE NUMBER

SURFACE OWNER JIMMIE R. TRENT Jr. ACREAGE 23.77±
OIL & GAS ROYALTY OWNER VERNA HAUGHT ET.AL. LEASE ACREAGE 24.0±

PROPOSED WORK: DRILL CONVERT DRILL DEEPER ___ REDRILL ___ FRACTURE OR STIMULATE PLUG OFF OLD FORMATION ___
PERFORATE NEW FORMATION ___ OTHER PHYSICAL CHANGE (SPECIFY) ___
PLUG ABANDON ___ CLEAN OUT & REPLUG ___

TARGET FORMATION GORDON ESTIMATED DEPTH 3000'

WELL OPERATOR KEY OIL COMPANY DESIGNATED AGENT JAN CHAPMAN

ADDRESS 22 GARTON PLAZA WESTON, WV 26452 ADDRESS 22 GARTON PLAZA WESTON, WV 26452

COUNTY NAME PERMIT

0000 4841

SURVEYED LAT. 39° 17' 46.9"

Form WV6

A.R.L.S.

6-6 Smithton - Flint - Sabalia 99 JUN 1 2004 JUN 2 2004

State of West Virginia
Division of Environmental Protection
Section of Oil and Gas

Handwritten initials

Well Operator's Report of Well Work

Farm Name: JIMMIE R. TRENT, JR.

Operator Well No. : HAUGHT NO. 2

LOCATION: Elevation: 1073'

Quadrangle: WEST UNION

District: WEST UNION

County: DODDRIDGE

Latitude: 13500 Feet South of 39 Deg. 20 Min. 00 Sec.

Longitude: 5880 Feet West of 80 Deg. 45 Min. 00 Sec.

Company: KEY OIL COMPANY
22 GARTON PLAZA
WESTON, WV 26452-0000

Agent: JAN CHAPMAN

Inspector: MIKE UNDERWOOD
Permit Issued: 06/09/04
Well Work Commenced: 06/26/04
Well Work Completed: 06/30/04
Verbal Plugging
Permission granted on: _____
Rotary X Cable _____ Rig
Total Depth (feet) 2863'
Fresh water depths (ft) 450'
Salt water depths (ft) NONE

Casing & Tubing Size	Used in Drilling	Left In Well	Cement Fill Up Cu. Ft.
8 5/8"	1113'	1113'	250 sks To Surface
4 1/2"	2821'	2821'	250 sks.

Is coal being mined in area (Y / N)? N
Coal Depths (ft): 368' (4')

OPEN FLOW DATA

Producing formation Keener Pay zone depth (ft) 2001' - 2018'
Big Injun 2029' - 2086'
Gordon 2660' - 2719'
Gas: Initial open flow ODOR MCF / d Oil: Initial open flow 0 Bbl / d
Final open flow 1,750 MCF / d Oil: Final open flow show Bbl / d
Time of open flow between initial and final tests N/A Hours
Static rock pressure 290 psig (surface pressure) after 96 Hours

Second producing formation _____ Pay zone depth (ft) _____
Gas: Initial open flow Commingled MCF / d Oil: Initial open flow _____ Bbl / d
Final open flow Commingled MCF / d Oil: Final open flow _____ Bbl / d
Time of open flow between initial and final tests _____ Hours
Static rock pressure _____ psig (surface pressure) after _____ Hours

NOTE: ON BACK OF THIS FORM PUT THE FOLLOWING: 1). DETAILS OF PERFORATED INTERVALS, FRACTURING OR STIMULATING, PHYSICAL CHANGE, ETC. 2). THE WELL LOG WHICH IS A SYSTEMATIC DETAILED GEOLOGICAL RECORD OF ALL FORMATIONS, INCLUDING COAL ENCOUNTERED BY THE WELLBORE.

For: KEY OIL COMPANY

By: *Jan Chapman*
Date: November 26, 2004

PRESIDENT

Office of Oil & Gas
Office of Chief
DEC 02 2004
WV Department of Environmental Protection

0000 4841

Haught #2 (47-017-4841)
Two Stage Foam Frac – Universal Well Services

1st Stage: Gordon(14 holes) (2703' to 2718.50') 60 Quality Foam.
500 gal. 15% HCL., 40,000# 20/40 sand,
325,000 SCF N2, 410 bbls foam

2nd Stage: Big Injun (12 holes) (2034' to 2080.50') 60 Quality Foam,
Big Injun (12 holes) (2013' to 2019') 750 gal 15% HCl, 45,000# 20/40 sand,
435,000 SCF N2, 520 bbls foam

WELL LOG

KB	0	10	
Clay	10	14	
Red Rock	14	18	
Sand	18	29	
Shale & Red Rock	29	144	
Sand & Shale	144	368	
— Coal	368	372	
Sand & Shale	372	395	
Red Rock	395	400	
Sand & Shale	400	760	½" water @ 450'
Red Rock	760	802	
Sand & Shale	802	949	
Red Rock	949	959	
Sand & Shale	959	1818	
Sand	1818	1859	
Sand & Shale	1859	1936	
— Little Lime	1936	1949	
— Big Lime	1949	2001	
— Keener	2001	2018	
Shale	2018	2029	
— Big Injun	2029	2086	
Shale	2086	2090	
— Squaw	2090	2115	
Shale	2115	2259	
— Weir	2259	2356	
Shale	2356	2469	<u>Gas Checks</u>
— Berea	2469	2488	1910' – No Show
Shale	2488	2660	2045' - Odor
— Gordon	2660	2719	2173' – Odor
Shale	2719	2863	2674' - Odor
TD	2863		