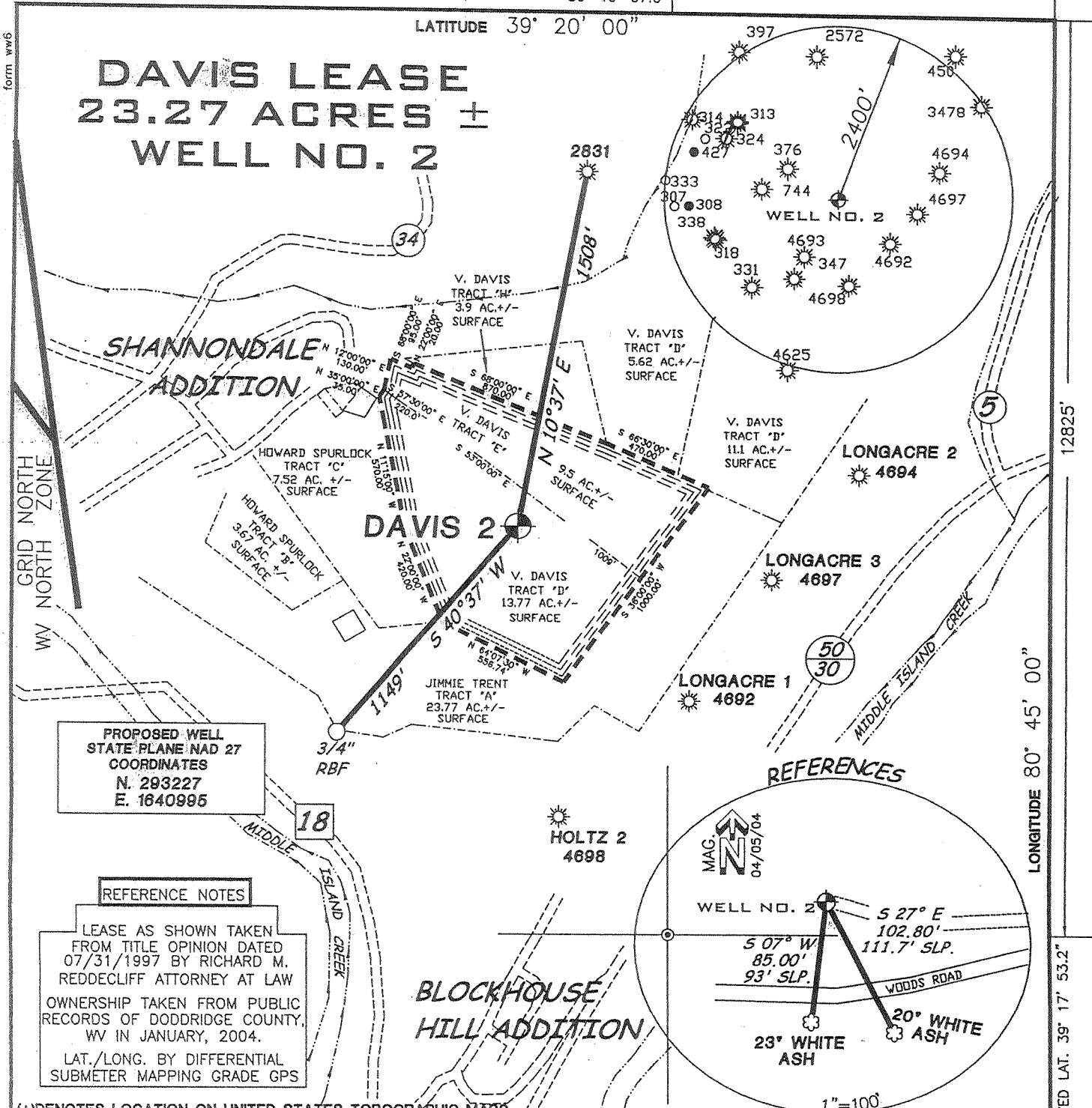


Surveyed Long. 80° 46' 07.0"

5250'

LATITUDE 39° 20' 00"

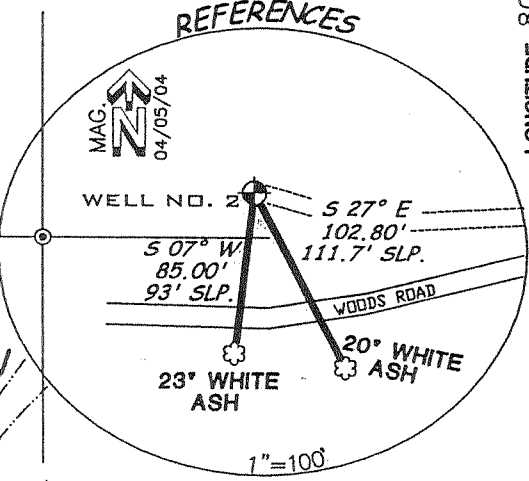
# DAVIS LEASE 23.27 ACRES ± WELL NO. 2



PROPOSED WELL  
STATE PLANE NAD 27  
COORDINATES  
N. 293227  
E. 1640995

### REFERENCE NOTES

LEASE AS SHOWN TAKEN  
FROM TITLE OPINION DATED  
07/31/1997 BY RICHARD M.  
REDDECLIFF ATTORNEY AT LAW  
OWNERSHIP TAKEN FROM PUBLIC  
RECORDS OF DODDRIDGE COUNTY,  
WV IN JANUARY, 2004.  
LAT./LONG. BY DIFFERENTIAL  
SUBMETER MAPPING GRADE GPS

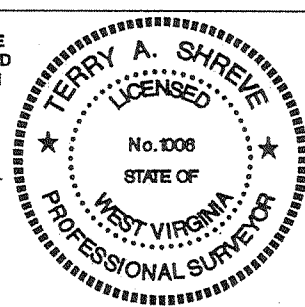
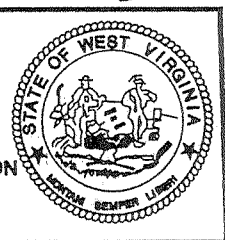


(+) DENOTES LOCATION ON UNITED STATES TOPOGRAPHIC MAPS

I, THE UNDERSIGNED, HEREBY CERTIFY THAT THIS PLAT IS CORRECT  
TO THE BEST OF MY KNOWLEDGE AND BELIEF AND SHOWS ALL THE  
INFORMATION REQUIRED BY LAW AND THE REGULATIONS ISSUED AND  
PRESCRIBED BY THE DEPARTMENT OF ENVIRONMENTAL PROTECTION

FILE NUMBER	040060
DRAWING NUMBER	WP2(W2-10)
SCALE	1"=600'
MINIMUM DEGREE OF ACCURACY	1/200
PROVEN SOURCE OF ELEVATION	TOP OF KNOB
ELEVATION	1235'

P.S. 1006  
*Terry A. Shreve*



STATE OF WEST VIRGINIA  
DIVISION OF ENVIRONMENTAL PROTECTION  
OFFICE OF OIL AND GAS

DATE: APRIL 21, 2004  
OPERATORS WELL NO. DAVIS No. 2  
API WELL NO. 47-017 04836  
STATE COUNTY PERMIT

WELL TYPE: OIL  GAS  LIQUID INJECTION  WASTE DISPOSAL   
(IF "GAS") PRODUCTION  STORAGE  DEEP  SHALLOW

LOCATION ELEVATION 1061' WATERSHED MIDDLE ISLAND CREEK  
DISTRICT WEST UNION COUNTY DODDRIDGE  
QUADRANGLE WEST UNION 7.5 LEASE NUMBER \_\_\_\_\_

SURFACE OWNER VEDA DAVIS ACREAGE 23.27±  
OIL & GAS ROYALTY OWNER VEDA DAVIS LEASE ACREAGE 23.27±

PROPOSED WORK: DRILL  CONVERT  DRILL DEEPER  REDRILL  FRACTURE OR STIMULATE  PLUG OFF OLD FORMATION   
PERFORATE NEW FORMATION  OTHER PHYSICAL CHANGE (SPECIFY) \_\_\_\_\_

PLUG ABANDON  CLEAN OUT & REPLUG

TARGET FORMATION GORDON ESTIMATED DEPTH 3000'

WELL OPERATOR KEY OIL COMPANY DESIGNATED AGENT JAN CHAPMAN  
ADDRESS 22 GARTON PLAZA WESTON, WV 26452 ADDRESS 22 GARTON PLAZA WESTON, WV 26452

COUNTY NAME PERMIT

0000 4836

606 (99)

MAY 23 2004

State of West Virginia  
Division of Environmental Protection  
Section of Oil and Gas

*Handwritten initials*

Well Operator's Report of Well Work

Farm Name: VEDA DAVIS

Operator Well No. : DAVIS NO. 2

LOCATION: Elevation: 1061'

Quadrangle: WEST UNION

District: WEST UNION

County: DODDRIDGE

Latitude: 12825 Feet South of 39 Deg. 20 Min. 00 Sec.

Longitude: 5250 Feet West of 80 Deg. 45 Min. 00 Sec.

Company: KEY OIL COMPANY  
22 GARTON PLAZA  
WESTON, WV 26452-0000

Agent: JAN CHAPMAN

Inspector: MIKE UNDERWOOD  
Permit Issued: 05/26/04  
Well Work Commenced: 07/19/04  
Well Work Completed: 07/21/04

Verbal Plugging  
Permission granted on: \_\_\_\_\_  
Rotary X Cable \_\_\_\_\_ Rig  
Total Depth ( feet ) 2827'  
Fresh water depths ( ft ) 358'  
Salt water depths ( ft ) NONE

Casing & Tubing Size	Used in Drilling	Left In Well	Cement Fill Up Cu. Ft.
8 5/8"	1067'	1067'	240 sks To Surface
4 1/2"	2806'	2806'	250 sks.

Is coal being mined in area ( Y / N )? N  
Coal Depths ( ft ): 90' (4')

OPEN FLOW DATA

Keener	1952' - 1966'
Big Injun	1984' - 2024'
Squaw	2025' - 2052'
Producing formation <u>Gordon</u>	Pay zone depth ( ft ) <u>2622' - 2678'</u>
Gas: Initial open flow <u>103</u> MCF / d	Oil: Initial open flow <u>0</u> Bbl / d
Final open flow <u>1,517</u> MCF / d	Oil: Final open flow <u>show</u> Bbl / d
Time of open flow between initial and final tests <u>N/A</u> Hours	
Static rock pressure <u>330</u> psig ( surface pressure ) after <u>96</u> Hours	

Second producing formation _____	Pay zone depth ( ft ) _____
Gas: Initial open flow <u>Commingled</u> MCF / d	Oil: Initial open flow _____ Bbl / d
Final open flow <u>Commingled</u> MCF / d	Oil: Final open flow _____ Bbl / d
Time of open flow between initial and final tests _____ Hours	
Static rock pressure _____ psig ( surface pressure ) after _____ Hours	

NOTE: ON BACK OF THIS FORM PUT THE FOLLOWING: 1). DETAILS OF PERFORATED INTERVALS, FRACTURING OR STIMULATING, PHYSICAL CHANGE, ETC. 2). THE WELL LOG WHICH IS A SYSTEMATIC DETAILED GEOLOGICAL RECORD OF ALL FORMATIONS, INCLUDING COAL ENCOUNTERED BY THE WELLBORE.

For: KEY OIL COMPANY

By: Jan Chapman  
Date: February 6 2005

MAY 27 2005  
**RECEIVED**  
 Office of Oil & Gas  
 Office of Chief  
 FEB 14 2005  
 PRESIDENT  
 WV Department of  
 Environmental Protection

*Vertical handwritten text: D000 4836*

Davis #2 (47-017-4836)  
Three Stage Foam Frac – BJ Services

1 <sup>st</sup> Stage:	Gordon( 15 holes ) ( 2668' to 2730' )	60 Quality Foam. 500 gal. 15% HCL., 25,000# 20/40 sand, 217,000 SCF N2, 255 bbls foam
2 <sup>nd</sup> Stage:	Squaw ( 3 holes ) ( 2075' to 2080') Big Injun ( 12 holes ) ( 1945' to 2032')	60 Quality Foam, 500 gal 15% HCl, 30,000# 20/40 sand, 295,000 SCF N2, 330 bbls foam
3 <sup>rd</sup> Stage:	Keener ( 15 holes ) ( 1963' to 1975' )	60 Quality Foam, 500 gal 15% HCl 25,000# 20/40 sand, 235,000 SCF N2, 310 bbls foam

WELL LOG

KB	0		10
Fill	10		12
Sand	12		20
Sand & Shale & Red Rock	20		90
Coal	90		94
Sand & Shale	94		171
Red Rock	171		175
Sand & Shale	175		234
Sand & Shale & Red Rock	234		460
Sand	460		486
Sand & Shale	486		550
Red Rock	550		568
Sand & Shale	568		759
Red Rock	759		821
Sand & Shale	821		883
Red Rock	883		954
Sand & Shale	954		1870
Little Lime	1870		1905
Big Lime	1905		1952
Keener	1952		1966
Shale & Lime	1966		1984
Big Injun	1984		2024
Shale	2024		2025
Squaw	2025		2052
Shale	2052		2218
Weir	2218		2314
Shale	2314		2430
Berea	2430		2435
Shale	2435		2622
Gordon	2622		2676
Sand & Shale	2676		2827
TD	2827		

½" water @ 358'

**Gas Checks**

1855' – Odor  
2043' – 10/10<sup>ths</sup> - 2" w/water  
2168' – 10/10<sup>ths</sup> - 2" w/water  
2638' – 10/10<sup>ths</sup> - 2" w/water

MAY 27 2005