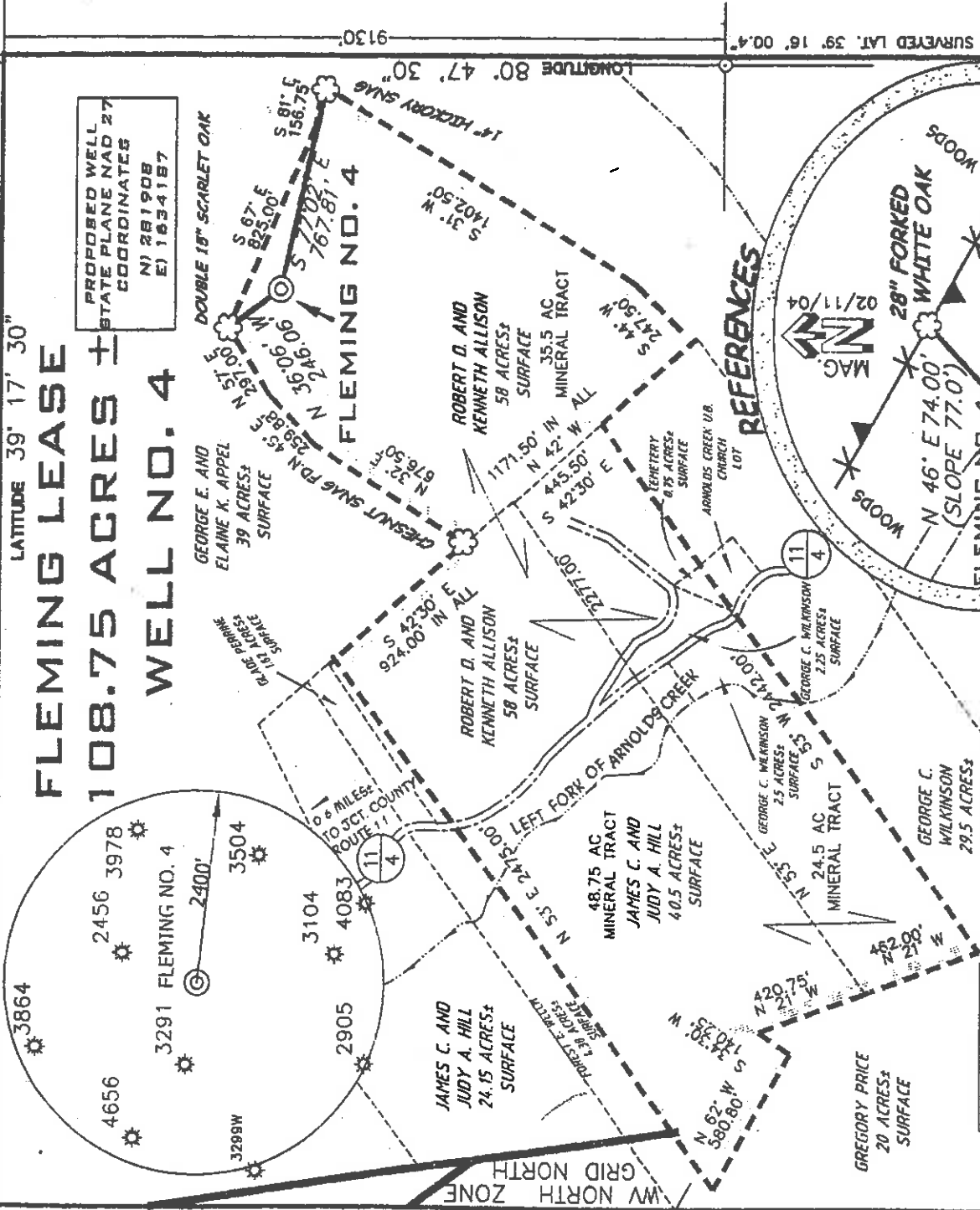


**FLEMING LEASE ±
108.75 ACRES ±
WELL NO. 4**

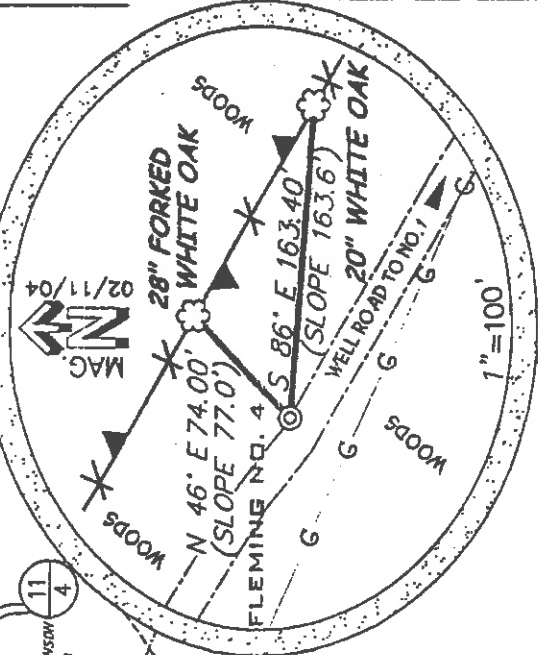


PROPOSED WELL STATE PLANE NAD 27 COORDINATES
N) 281908
E) 1634187

DOUBLE 18" SCRIPLET OAK

GEORGE E. AND ELAINE K. APPEL 39 ACRES SURFACE
GREGORY PRICE 20 ACRES SURFACE
JAMES C. AND JUDY A. HILL 40.5 ACRES SURFACE
ROBERT D. AND KENNETH ALLISON 58 ACRES SURFACE
GEORGE C. WILKINSON 29.5 ACRES SURFACE
MINERAL TRACT 48.75 AC
MINERAL TRACT 24.5 AC
MINERAL TRACT 35.5 AC

REFERENCES



REFERENCE NOTES
LEASE AS SHOWN TAKEN FROM DEED BOOK 107 ON PAGE 77.
OWNERSHIP TAKEN FROM PUBLIC RECORDS OF DODDRIDGE COUNTY, WV IN AUGUST, 2003.
LAT./LONG. BY DIFFERENTIAL SUBMETER MAPPING GRADE GPS

(*) DENOTES LOCATION ON UNITED STATES TOPOGRAPHIC MAPS

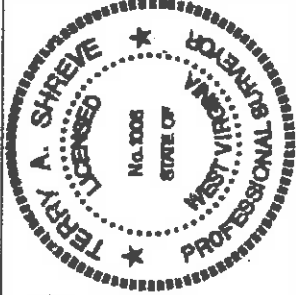
FILE NUMBER 030022
DRAWING NUMBER WP4(W1-55)
SCALE 1" = 600'
MINIMUM DEGREE OF ACCURACY 1/200
PROVEN SOURCE OF ELEVATION TOP OF KNOB ELEVATION 1335'



STATE OF WEST VIRGINIA
DIVISION OF ENVIRONMENTAL PROTECTION
OFFICE OF OIL AND GAS

I, THE UNDERSIGNED HEREBY CERTIFY THAT THIS PLAN IS CORRECT TO THE BEST OF MY KNOWLEDGE AND BELIEF AND SHOWS ALL THE INFORMATION REQUIRED BY LAW AND THE REGULATIONS ISSUED AND PRESCRIBED BY THE DEPARTMENT OF ENVIRONMENTAL PROTECTION

P.S. Terry A. Shreve
1008



DATE: FEBRUARY 20, 2004
OPERATORS WELL NO. FLEMING NO. 4
API WELL NO.

WELL TYPE: OIL GAS LIQUID INJECTION WASTE DISPOSAL
(IF "GAS") PRODUCTION STORAGE DEEP SHALLOW
LOCATION ELEVATION 1263' WATERSHED LEFT FORK OF ARNOLDS CREEK
DISTRICT WEST UNION COUNTY
QUADRANGLE WEST UNION 7.5' LEASE NUMBER
SURFACE OWNER JOHN S. TRENT ACREAGE 58 AC ±
OIL & GAS ROYALTY OWNER THOMAS J. FLEMING HEIRS LEASE ACREAGE 108.75 AC ±

PROPOSED WORK: DRILL CONVERT DEEPER REDRILL FRACTURE OR STIMULATE PLUS OFF OLD FORMATION
PERFORMATE NEW FORMATION OTHER PHYSICAL CHANGE (SPECIFY)

TARGET FORMATION GORDON PLUG & ABANDON CLEAN OUT & REFLUID ESTIMATED DEPTH 3000'
WELL OPERATOR KEY OIL COMPANY DESIGNATED AGENT JAN CHAPMAN
ADDRESS 22 GARTON PLAZA WESTON, WV 26452 ADDRESS 22 GARTON PLAZA WESTON, WV 26452

D000 4820

6-6 Skaisist rock - Bluestone creek 133

State of West Virginia
Division of Environmental Protection
Section of Oil and Gas

Aut

Well Operator's Report of Well Work

Farm Name: JOHN S. TRENT

Operator Well No. : FLEMING #4

LOCATION: Elevation: 1263'

Quadrangle: WEST UNION

District: WEST UNION
Latitude: 9130 Feet South of 39 Deg. 17 Min. 30 Sec.
Longitude: 100 Feet West of 80 Deg. 47 Min. 30 Sec.

County: DODDRIDGE

Company: KEY OIL COMPANY
22 GARTON PLAZA
WESTON, WV 26452-0000

Agent: JAN CHAPMAN

Inspector: MIKE UNDERWOOD
Permit Issued: 04/02/04
Well Work Commenced: 04/19/04
Well Work Completed: 04/22/04

Verbal Plugging
Permission granted on: _____
Rotary X Cable _____ Rig
Total Depth (feet) 2927'
Fresh water depths (ft) 140'
Salt water depths (ft) NONE

Is coal being mined in area (Y / N) ? N
Coal Depths (ft) : NONE

OPEN FLOW DATA

Casing & Tubing Size	Used in Drilling	Left in Well	Cement Fill Up Cu. Ft.
8 5/8"	1270'	1270'	280 sks To Surface
4 1/2"	2844'	2844'	250 sks.

Big Injun
Squaw Gordon
Producing formation _____
Gas: Initial open flow ODOR MCF / d
Final open flow 2,398 MCF / d
Time of open flow between initial and final tests N/A Hours
Static rock pressure 240 psig (surface pressure) after 96 Hours

Second producing formation _____
Gas: Initial open flow Commingled MCF / d
Final open flow Commingled MCF / d
Time of open flow between initial and final tests _____ Hours
Static rock pressure _____ psig (surface pressure) after _____ Hours

NOTE: ON BACK OF THIS FORM PUT THE FOLLOWING: 1). DETAILS OF PERFORATED INTERVALS, FRACTURING OR STIMULATING, PHYSICAL CHANGE, ETC. 2). THE WELL LOG WHICH IS A SYSTEMATIC DETAILED GEOLOGICAL RECORD OF ALL FORMATIONS, INCLUDING COAL ENCOUNTERED BY THE WELLBORE.

For: KEY OIL COMPANY

By: 
Date: November 23, 2004

RECEIVED
Office of Oil & Gas
Office of Chief
DEC 02 2004
WV Department of
Environmental Protection

0000 4820

Fleming #4 (47-017-4820)
Two Stage Foam Frac -- Universal Well Services

1 st Stage:	Gordon (15 holes) (2778' to 2792')	60 Quality Foam, 500 gal. 15% HCl., 40,000# 20/40 sand, 325,000 SCF N2, 410 bbls foam
2 nd Stage:	Squaw (7 holes) (2180' to 2188') Big Injun (17 holes) (2125' to 2165')	60 Quality Foam, 750 gal 15% HCl., 45,000# 20/40 sand, 435,000 SCF N2, 520 bbls foam

1/2" water @ 140'

WELL LOG

KB	0	10	
Clay	10	16	
Red Rock	16	34	
Sand & Shale	34	108	
Red Rock	108	112	
Sand & Shale	112	155	
Red Rock	155	175	
Sand & Shale	175	250	
Sand	250	270	
Sand & Shale	270	403	
Red Rock	403	420	
Sand & Shale & Red Rock	420	563	
Sand	563	574	
Sand & Shale	574	883	
Red Rock	883	893	
Sand & Shale	893	2011	
Little Lime	2011	2048	
Big Lime	2048	2118	
Big Injun	2118	2172	
Squaw	2172	2188	
Shale	2188	2340	
Weir	2340	2446	
Shale	2446	2538	
Berea	2538	2551	
Shale	2551	2731	
Gordon	2731	2786	
Shale	2786	2927	
TD	2927		

Gas Checks

1950' - No Show
2007' - Odor
2231' - No Show
2706' - Odor

DEC 23 2004