

SURVEYED LONG.
80° 42' 06.9"

APD 9970'

DWIGHT MOORE LEASE 77.78 AC. ± OF 237.9 AC. ± WELL NO. 1

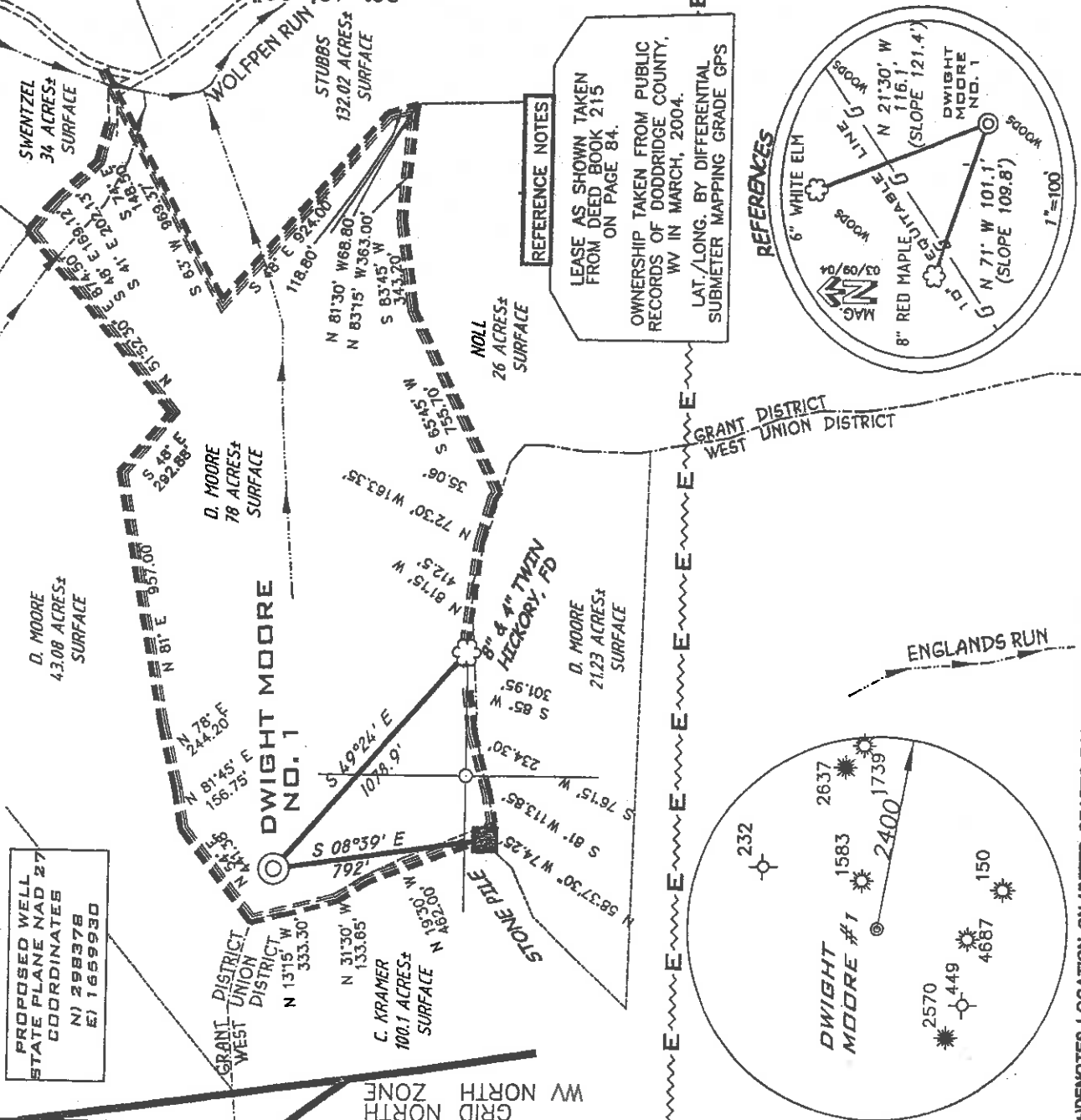
PROPOSED WELL
STATE PLANE NAD 27
COORDINATES
N) 298378
E) 1659930

LATITUDE 39° 20' 00"

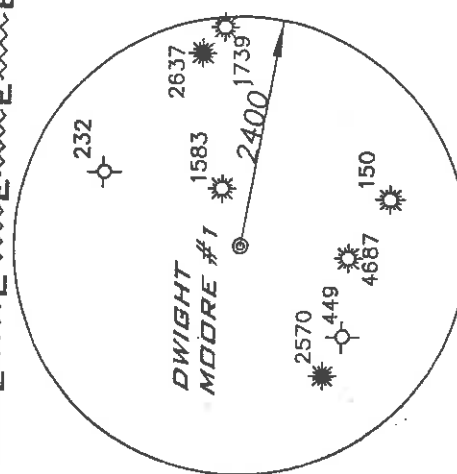
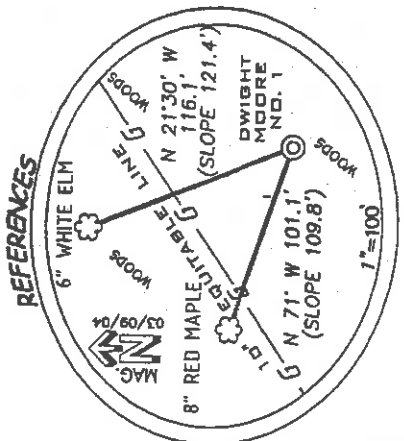
7410

LONGITUDE 80° 40' 00"

SURVEYED LAT. 39° 18' 46.7"



REFERENCE NOTES
LEASE AS SHOWN TAKEN FROM DEED BOOK 215 ON PAGE 84.
OWNERSHIP TAKEN FROM PUBLIC RECORDS OF DODDRIDGE COUNTY, WV IN MARCH, 2004.
LAT./LONG. BY DIFFERENTIAL SUBMETER MAPPING GRADE GPS

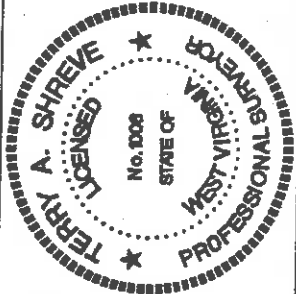


(+)-IDENOTES LOCATION ON UNITED STATES TOPOGRAPHIC MAPS

FILE NUMBER 040058
DRAWING NUMBER WPT(W2-2)
SCALE 1"=600'
MINIMUM DEGREE OF ACCURACY 1/200
PROVEN SOURCE OF ELEVATION JCT. OF ROADS ELEVATION 949'

THE UNDERSIGNED HEREBY CERTIFY THAT THIS PLAT IS CORRECT TO THE BEST OF MY KNOWLEDGE AND BELIEF AND SHOWS ALL THE INFORMATION REQUIRED BY LAW AND THE REGULATIONS ISSUED AND PRESCRIBED BY THE DEPARTMENT OF ENVIRONMENTAL PROTECTION

P.S. *Terry A. Shreve*
1008
LAND SURVEYING, LLC
GRANTSVILLE, WV 26047
(304) 394-0005



STATE OF WEST VIRGINIA
DIVISION OF ENVIRONMENTAL PROTECTION
OFFICE OF OIL AND GAS

DATE: MARCH 9, 2004
OPERATORS WELL NO. D. MOORE NO. 1
API WELL NO. 47-017 04815
STATE COUNTY PERMIT

WELL TYPE: OIL GAS LIQUID INJECTION WASTE DISPOSAL
 (IF 'GAS') PRODUCTION STORAGE DEEP SHALLOW
 LOCATION ELEVATION 1358' WATERSHED WOLFPEN RUN
 DISTRICT GRANT COUNTY SMITHBURG 7.5
 QUADRANGLE DWIGHT E. AND TINA M. MOORE LEASE NUMBER 77.78±
 SURFACE OWNER DWIGHT E. AND TINA M. MOORE ACREAGE 77.78±
 OIL & GAS ROYALTY OWNER DWIGHT E. AND TINA M. MOORE LEASE ACREAGE 237.9±
 PROPOSED WORK: DRILL CONVERT DRILL DEEPER REDRILL FRACTURE OR STIMULATE PLUG OFF OLD FORMATION
 PERFORMATE NEW FORMATION OTHER PHYSICAL CHANGE (SPECIFY) _____
 COUNTY NAME DODDRIDGE PERMIT
 TARGET FORMATION GORDON PLUG ABANDON CLEAN OUT & REPLUG
 ESTIMATED DEPTH 3000'
 WELL OPERATOR KEY OIL COMPANY DESIGNATED AGENT JAN CHAPMAN
 ADDRESS 22 GARTON PLAZA WESTON, WV 26452 ADDRESS 22 GARTON PLAZA WESTON, WV 26452

D000 4815

APR 30 2004

6-6 (99) SMITH-KUNT-861211

State of West Virginia
Division of Environmental Protection
Section of Oil and Gas

Well Operator's Report of Well Work

Farm Name: DWIGHT T. & TINA M. MOORE

Operator Well No. : D. MOORE #1

LOCATION: Elevation: 1358'

Quadrangle: SMITHBURG

District: GRANT
Latitude: 7410
Longitude: 9970

County: DODDRIDGE
Feet South of 39 Deg. 20 Min. 00 Sec.
Feet West of 80 Deg. 40 Min. 00 Sec.

Company: KEY OIL COMPANY
22 GARTON PLAZA
WESTON, WV 26452-0000

Agent: JAN E. CHAPMAN

Inspector: MIKE UNDERWOOD
Permit Issued: 04/27/04
Well Work Commenced: 11/15/04
Well Work Completed: 11/18/04
Verbal Plugging
Permission granted on: _____ Rig
Rotary X Cable _____
Total Depth (feet) 3084'
Fresh water depths (ft) 165'
Salt water depths (ft) 1585', 1615'

Is coal being mined in area (Y / N)? N
Coal Depths (ft): None Reported

OPEN FLOW DATA

Producing formation Big Injun
Gas: Initial open flow Gordon _____ MCF / d Pay zone depth (ft) 2228' - 2320'
Final open flow 1,750 MCF / d Oil: Initial open flow 0 Bbl / d
Time of open flow between initial and final tests N/A Oil: Final open flow show _____ Bbl / d
Static rock pressure 245 psig (surface pressure) after 96 Hours
Second producing formation Pay zone depth (ft) _____
Gas: Initial open flow Commingled MCF / d Oil: Initial open flow _____ Bbl / d
Final open flow Commingled MCF / d Oil: Final open flow _____ Bbl / d
Time of open flow between initial and final tests _____ Hours
Static rock pressure _____ psig (surface pressure) after _____ Hours

NOTE: ON BACK OF THIS FORM PUT THE FOLLOWING: 1). DETAILS OF PERFORATED INTERVALS, FRACTURING OR STIMULATING, PHYSICAL CHANGE, ETC. 2). THE WELL LOG WHICH IS A SYSTEMATIC DETAILED GEOLOGICAL RECORD OF ALL FORMATIONS, INCLUDING COAL ENCOUNTERED BY THE WELLBORE.

For: KEY OIL COMPANY

By: Jan Chapman
Date: February 2, 2007

PRESIDENT

0000 4815 F

| Casing & Tubing Size | Used in Drilling | Left in Well | Cement Fill Up Cu. Ft. |
|----------------------|------------------|--------------|------------------------|
| 8 5/8" | 1356' | 1356' | 310 sks To Surface |
| 4 1/2" | 2995' | 2995' | 250 sks |

RECEIVED
Office of Oil & Gas
Office of Chief
FEB 08 2007
WV Department of Environmental Protection

FEB 23 2007

D. Moore #1 (47-017-4815-F)
 BJ Services Company
 Re-Completion

Big Injun (15 Holes) (2284' to 2298')

Set Drop Ball Plug at 2360'. Re-traced the Big Injun sand using 60 Quality Foam, 500 gal 15% HCl, 27,000 # 20/40 sand, 250,000 SCF N2, 325 blis foam. Drilled out drop ball plug, cleaned up well and ran 2 3/8" tubing and sucker rods to 2935'.

WELL LOG

| | | | |
|------------------|------|------|-----------------|
| KB | 0 | 10 | |
| Top Soil | 10 | 16 | |
| Sand & Shale | 16 | 40 | |
| Shale & Red Rock | 40 | 71 | ½" water @ 165' |
| Sand & Shale | 71 | 240 | |
| Red Rock | 240 | 275 | |
| Sand & Shale | 275 | 312 | |
| Sand | 312 | 327 | |
| Sand & Shale | 327 | 400 | |
| Red Rock | 400 | 435 | |
| Sand & Shale | 435 | 664 | |
| Shale & Red Rock | 664 | 685 | |
| Sand & Shale | 685 | 796 | |
| Sand | 796 | 819 | |
| Sand & Shale | 819 | 1030 | |
| Shale & Red Rock | 1030 | 1139 | |
| Sand & Shale | 1139 | 1732 | |
| Sand | 1732 | 1835 | |
| Sand & Shale | 1835 | 2119 | |
| Blue Monday | 2119 | 2160 | |
| Big Lime | 2160 | 2228 | |
| Big Injun | 2228 | 2320 | |
| Shale | 2320 | 2452 | |
| Weir | 2452 | 2546 | |
| Shale | 2546 | 2686 | |
| Berea | 2686 | 2696 | |
| Shale | 2696 | 2867 | |
| Gordon | 2867 | 2923 | |
| Shale | 2923 | 3084 | |
| TD | 3084 | | |

Damp @ 1585'
 ½" water @ 1615'
 Show oil @ 1930'

Gas Checks

TD- Odor

State of West Virginia
Division of Environmental Protection
Section of Oil and Gas

J.D.

Well Operator's Report of Well Work

Farm Name: DWIGHT T. & TINA M. MOORE

Operator Well No.: D. MOORE #1

LOCATION: Elevation: 1358'

Quadrangle: SMITHBURG

District: GRANT
Latitude: 7410 Feet South of 39 Deg. 20 Min. 00 Sec.
Longitude: 9970 Feet West of 80 Deg. 40 Min. 00 Sec.

County: DODDRIDGE

Company: KEY OIL COMPANY
22 GARTON PLAZA
WESTON, WV 26452-0000

Agent: JAN CHAPMAN

Inspector: MIKE UNDERWOOD
Permit Issued: 04/27/04
Well Work Commenced: 11/15/04
Well Work Completed: 11/18/04

Verbal Plugging
Permission granted on: _____ Rig
Rotary X Cable _____ 3084'
Total Depth (feet) _____ 165'
Fresh water depths (ft) _____ 1585', 1615'
Salt water depths (ft) _____

Is coal being mined in area (Y / N)? N
Coal Depths (ft): NONE

OPEN FLOW DATA

| Casing & Tubing Size | Used in Drilling | Left In Well | Cement Fill Up Cu. Ft. |
|----------------------|------------------|--------------|------------------------|
| 8 5/8" | 1356' | 1356' | 310 sks To Surface |
| 4 1/2" | 2995' | 2995' | 250 sks. |

Producing formation Big Injun Gordon 2228' - 2320'
Gas: Initial open flow _____ MCF / d Oil: Initial open flow _____ Bbl / d
Final open flow 2,144 MCF / d Oil: Final open flow show _____ Bbl / d
Time of open flow between initial and final tests N/A Hours
Static rock pressure 190 psig (surface pressure) after 96 Hours

Second producing formation _____ Pay zone depth (ft) _____
Gas: Initial open flow _____ Commingled MCF / d Oil: Initial open flow _____ Bbl / d
Final open flow _____ Commingled MCF / d Oil: Final open flow _____ Bbl / d
Time of open flow between initial and final tests _____ Hours
Static rock pressure _____ psig (surface pressure) after _____ Hours

NOTE: ON BACK OF THIS FORM PUT THE FOLLOWING: 1). DETAILS OF PERFORATED INTERVALS, FRACTURING OR STIMULATING, PHYSICAL CHANGE, ETC. 2). THE WELL LOG WHICH IS A SYSTEMATIC DETAILED GEOLOGICAL RECORD OF ALL FORMATIONS, INCLUDING COAL ENCOUNTERED BY THE WELLBORE.

For: KEY OIL COMPANY

By: *Jan Chapman*
Date: April 13, 2005

MAY 27 2005
PRESIDENT

Dodd 4815

D. Moore #1 (47-017-4815)
Two Stage Foam Frac – Universal Well Services

| | | |
|------------------------|---|---|
| 1 st Stage: | Gordon (15 holes) (2900' to 2918') | 60 Quality Foam, 500 gal. 15% HCL., 30,000# 20/40 sand, 275,000 SCF N2, 310 bbis foam |
| 2 nd Stage: | Big Injun (15 holes) (2284' to 2298') | 60 Quality Foam, 500 gal 15% HCl, 30,000# 20/40 sand, 245,000 SCF N2, 325 bbis foam |

WELL LOG

| | | | |
|------------------|------|------|--------------------|
| KB | 0 | 10 | |
| Top Soil | 10 | 16 | |
| Sand & Shale | 16 | 40 | |
| Shale & Red Rock | 40 | 71 | |
| Sand & Shale | 71 | 240 | 1/2" water @ 165' |
| Red Rock | 240 | 275 | |
| Sand & Shale | 275 | 312 | |
| Sand | 312 | 327 | |
| Sand & Shale | 327 | 400 | |
| Red Rock | 400 | 435 | |
| Sand & Shale | 435 | 664 | |
| Shale & Red Rock | 664 | 685 | |
| Sand & Shale | 685 | 796 | |
| Sand | 796 | 819 | |
| Sand & Shale | 819 | 1030 | |
| Shale & Red Rock | 1030 | 1139 | |
| Sand & Shale | 1139 | 1732 | Damp @ 1585' |
| Sand | 1732 | 1835 | 1/2" water @ 1615' |
| Sand & Shale | 1835 | 2119 | Show oil @ 1930' |
| Blue Monday | 2119 | 2160 | |
| Big Lime | 2160 | 2228 | |
| Big Injun | 2228 | 2320 | |
| Shale | 2320 | 2452 | |
| Weir | 2452 | 2546 | |
| Shale | 2546 | 2686 | |
| Berea | 2686 | 2696 | |
| Shale | 2696 | 2867 | |
| Gordon | 2867 | 2923 | |
| Shale | 2923 | 3084 | |
| TD | 3084 | | |

Gas Checks

TD - Odor

MAY 27 2005