

SURVEYED LONG: 80' 41' 49.0"

LATITUDE 39' 20' 00"

BROOME LEASE ± 55 ACRES ± WELL NO. 1

LEASE AS SHOWN TAKEN FROM A TITLE OPINION DATED 06-11-2003 AS PREPARED BY GARY MORRIS, LAWYER. OWNERSHIP TAKEN FROM PUBLIC RECORDS OF DODDRIDGE COUNTY, WV IN NOVEMBER, 2003. LAT./LONG. BY DIFFERENTIAL SUBMETER MAPPING GRADE GPS

GLASPELL SURFACE 34.5 ACRES± TH 9-23

STONE, FD. EDWARD SNYDER 19.11 ACRES± SURFACE TH 9-32.1

WILLIAM YERKEY SURFACE 54.93 ACRES± TH 9-24

EDWARD SNYDER 35.84 ACRES± SURFACE TH 9-32.2

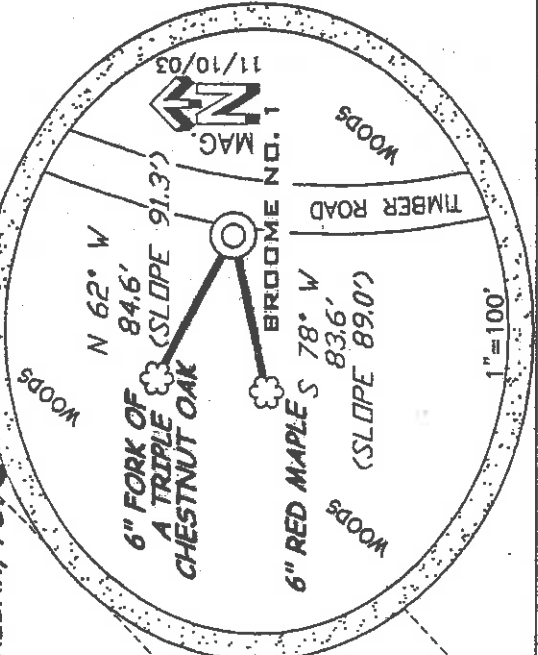
EDWARD SNYDER 36.63 ACRES± SURFACE TH 9-32

HOOVER FORK 115 ACRES± SURFACE TH 13-03

J. WILLIAMS SURFACE 25.29 ACRES± TH 13-09

L. WILLIAMS SURFACE 25.29 ACRES± TH 13-09.1

5/8 REBAR, FD. REFERENCES

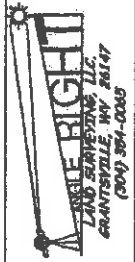


(*) DENOTES LOCATION ON UNITED STATES TOPOGRAPHIC MAPS

FILE NUMBER 030037
DRAWING NUMBER WPT(W1-34)
SCALE 1"=500'
MINIMUM DEGREE OF ACCURACY 1/200.
PROVEN SOURCE JUNCTION OF ROADS
ELEVATION 904'



P.S. Terry A. Shreve
1006



STATE OF WEST VIRGINIA
DIVISION OF ENVIRONMENTAL PROTECTION
OFFICE OF OIL AND GAS

WELL TYPE: OIL GAS LIQUID INJECTION WASTE DISPOSAL STORAGE DEEP SHALLOW PERMIT
(IF "GAS") PRODUCTION WATERSHED TRIBUTARY OF FLINT RUN
LOCATION ELEVATION 1213' DISTRICT GRANT COUNTY DODDRIDGE
QUADRANGLE SMITHBURG 7.5' LEASE NUMBER
SURFACE OWNER CAROL LYNN LISTON AND DAVID K. LISTON ACREAGE 55 AC±
OIL & GAS ROYALTY OWNER ED BROOME, INC. LEASE ACREAGE 55 AC±
PROPOSED WORK: DRILL CONVERT DRILL DEEPER REDRILL FRACTURE OR STIMULATE PLUG OFF OLD FORMATION
PERFORM NEW FORMATION OTHER PHYSICAL CHANGE (SPECIFY)
TARGET FORMATION ALEXANDER PERMIT
WELL OPERATOR KEY OIL COMPANY DESIGNATED AGENT JAN CHAPMAN
ADDRESS 22 GARTON PLAZA WESTON, WV 26452 ADDRESS 22 GARTON PLAZA WESTON, WV 26452

DODD 4791

(99 Smith's Flint Sedalia 606)

MA 4791

State of West Virginia
Division of Environmental Protection
Section of Oil and Gas

Well Operator's Report of Well Work

Farm Name: CAROL LYNN & DAVID K. LISTON

Operator Well No.: BROOME NO. 1

LOCATION: Elevation: 1213'

Quadrangle: SMITHBURG

District: WEST UNION
Latitude: 135 Feet South of 39 Deg. 20 Min. 00 Sec.
Longitude: 8620 Feet West of 80 Deg. 40 Min. 00 Sec.

County: DODDRIDGE

Company: KEY OIL COMPANY
22 GARTON PLAZA
WESTON, WV 26452-0000

Agent: JAN CHAPMAN

Inspector: MIKE UNDERWOOD
Permit Issued: 05/04/04
Well Work Commenced: 08/16/04
Well Work Completed: 08/21/04

Verbal Plugging
Permission granted on: _____
Rotary X Cable _____ Rig
Total Depth (feet) 5753'
Fresh water depths (ft) 80'
Salt water depths (ft) 1697'

Is coal being mined in area (Y / N) ? N
Coal Depths (ft) : _____

OPEN FLOW DATA

Producing formation	Rileys	Pay zone depth (ft)	4655' - 5110'
Gas: Initial open flow	Benson	Oil: Initial open flow	5180' - 5190'
Final open flow	Alexander	Oil: Final open flow	5436' - 5534'
Time of open flow between initial and final tests	60 MCF / d	show	0 Bbl / d
Static rock pressure	1,858 MCF / d	N/A	Hours
	1760 psig (surface pressure)	after	96 Hours
Second producing formation		Pay zone depth (ft)	
Gas: Initial open flow	Commingled	Oil: Initial open flow	Bbl / d
Final open flow	Commingled	Oil: Final open flow	Bbl / d
Time of open flow between initial and final tests		Hours	
Static rock pressure		psig (surface pressure)	after
			Hours

RECEIVED
Office of Oil & Gas
Office of Chief
SEP 10 2004
WV Department of
Environmental Protection

NOTE: ON BACK OF THIS FORM PUT THE FOLLOWING: 1). DETAILS OF PERFORATED INTERVALS, FRACTURING OR STIMULATING, PHYSICAL CHANGE, ETC. 2). THE WELL LOG WHICH IS A SYSTEMATIC DETAILED GEOLOGICAL RECORD OF ALL FORMATIONS, INCLUDING COAL ENCOUNTERED BY THE WELLBORE.

Dodd 4791

For: KEY OIL COMPANY

By: 
Date: September 1, 2004

PRESIDENT

SEP 15 2004

Broome #1 (47-017-479-1)
Three Stage Foam Frac – BJ Services

1 st Stage:	Alexander (13 holes) (5458' to 5529')	60 Quality Foam, 500 gal. 15% HCl., 60,000# 20/40 sand, 565,000 SCF N2, 820 bbis foam
2 nd Stage:	Benson (10 holes) (5185.50' to 5187.75') Third Riley (4 holes) (4948.25' to 5098.25')	60 Quality Foam, 750 gal 15% HCl, 40,000# 20/40 sand, 454,000 SCF N2, 625 bbis foam
3 rd Stage:	Riley (13 holes) (4668' to 4718.75')	60 Quality Foam, 750 gal 15% HCl 5,000# 80/100 sand, 35,000# 20/40 sand, 448,000 SCF N2, 620 bbis foam

		<u>WELL LOG</u>	
KB	0	10	
Clay	10	16	
Sand	16	20	
Shale & Red Rock	20	75	
Sand & Shale	75	172	
Sand	172	203	
Sand & Shale	203	300	
Red Rock	300	337	
Sand & Shale	337	511	
Red Rock	511	530	
Sand & Shale	530	721	
Sand	721	729	
Sand & Shale	729	945	
Red Rock	945	999	
Sand & Shale	999	1514	
Sand	1514	1540	
Sand & Shale	1540	2012	
Little Lime	2012	2036	
Big Lime	2036	2132	
Keener	2132	2173	
Shale	2173	2178	
Big Injun	2178	2256	
Shale	2256	2400	
Weir	2400	2482	
Shale	2482	2792	
Gordon	2792	2864	
Shale	2864	3487	
Warren	3487	3538	
Chale	3538	3547	
Speecheley	3547	3624	
S shale	3624	4655	
Riley	4655	4748	
Shale	4748	4940	
Third Riley	4940	5110	
S shale	5110	5180	
Benson	5180	5190	
Shale	5190	5436	
Alexander	5436	5534	
Shale	5534	5753	
TD	5753		

¾" water @ 80'

1" water @ 1697'

Gas Checks
Soaped Hole

TD - 2110^{ths} -2" w/water

OCT 15 2004