

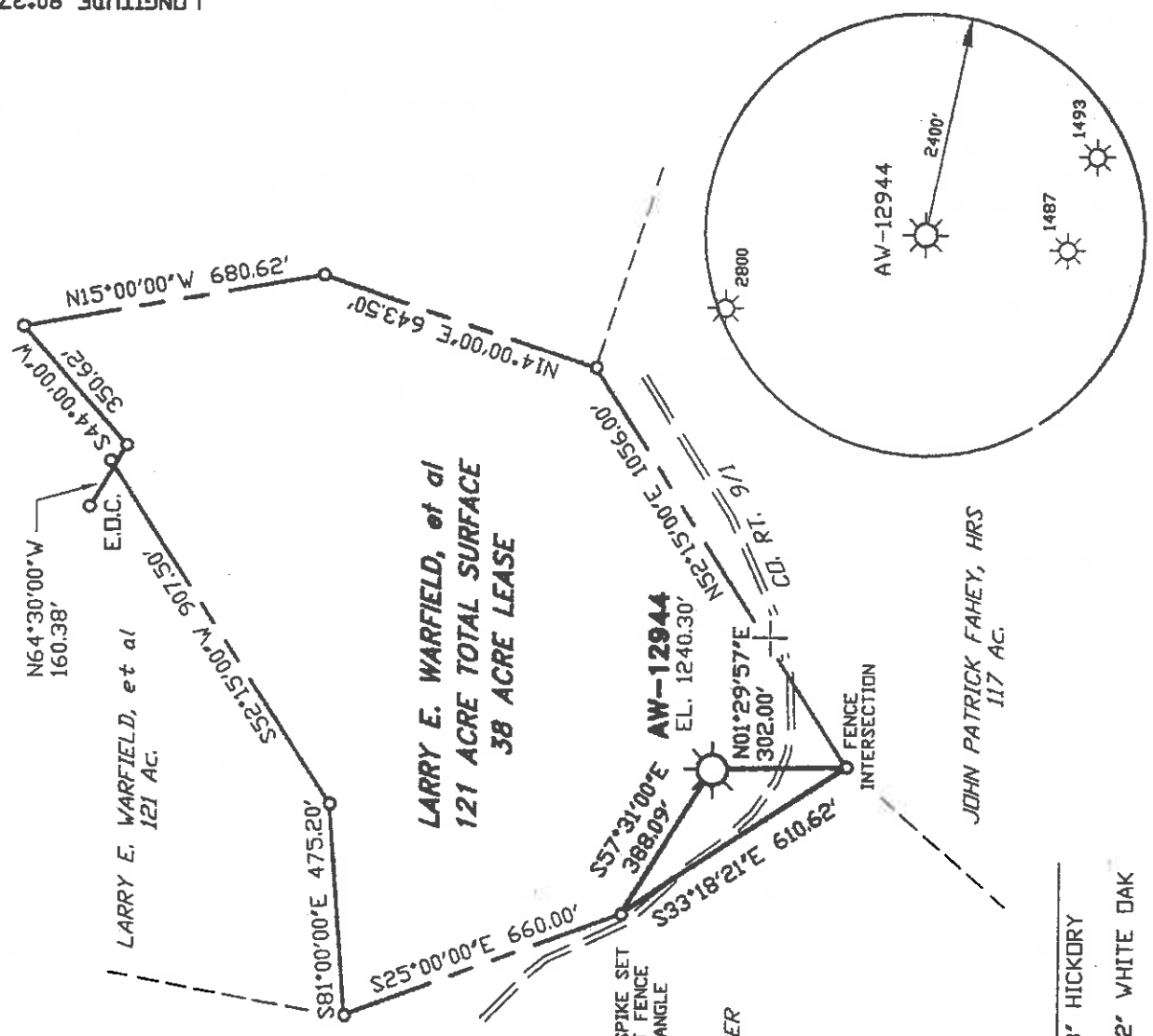
(+ ) DENOTES LOCATION OF WELL ON U.S.G.S. TOPOGRAPHIC MAP



7,300'

LATITUDE 39° 10'

LONGITUDE 80° 37' 30"



REFERENCE

PROPOSED WELL TO 8' HICKORY  
S41°15'06"W 116.13'  
PROPOSED WELL TO 12' WHITE OAK  
S68°41'33"E 161.95'

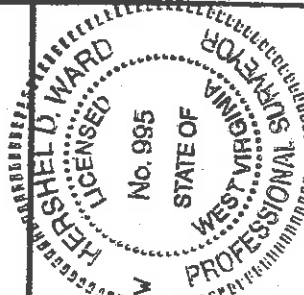
**MSES consultants, inc.**

FILE NO. 03-208  
DRAWN BY M.V.S./HDW  
SCALE 1" = 400'  
MIN. DEGREE OF ACCURACY 1 IN 2500  
PROVEN SOURCE OF ELEVATION  
1284' INTERSECTION OF ROADS  
APPROX. 550' NW OF WELL

I, THE UNDERSIGNED, HEREBY CERTIFY THAT THIS PLAT IS CORRECT TO THE BEST OF MY KNOWLEDGE AND BELIEF, AND THAT IT SHOWS ALL INFORMATION REQUIRED BY LAW AND REGULATIONS ISSUED AND PRESCRIBED BY THE DEPARTMENT OF MINES.

(SIGNED) *Hershel D. Ward*

R.P.E. L.L.S. 995



STATE OF WEST VIRGINIA  
DEPARTMENT OF MINES  
OIL AND GAS DIVISION



DATE JUNE 24, 20 03  
OPERATOR'S WELL NO. AW-12944  
API WELL NO.

47 017 04774T  
STATE COUNTY PERMIT NO.

WELL TYPE: OIL  GAS  LIQUID INJECTION  WASTE DISPOSAL   
IF "GAS", PRODUCTION  STORAGE  DEEP  SHALLOW

LOCATION: ELEVATION 1240.30'  
DISTRICT NEW MILTON  
QUADRANGLE NEW MILTON, WV 7.5'  
SURFACE OWNER LARRY E. WARFIELD, et al  
OIL & GAS ROYALTY OWNER L. E. NICHOLSON HEIRS, et al  
WATERSHED ROBERTS FORK OF MEATHOUSE FORK  
COUNTY DODDRIIDGE  
NEAREST TOWN COLDWATER  
ACREAGE 38 OF 121  
LEASE ACREAGE 38

PROPOSED WORK: DRILL  CONVERT  DRILL DEEPER  REDRILL  FRACTURE OR STIMULATE   
PLUG OFF OLD FORMATION  PERFORATE NEW FORMATION   
OTHER PHYSICAL CHANGE IN WELL (SPECIFY)  
PLUG AND ABANDON  CLEAN OUT AND REPLUG   
TARGET FORMATION GANTZ  
ESTIMATED DEPTH 2930'  
WELL OPERATOR DOMINION TRANSMISSION, INC.  
DESIGNATED AGENT JAMES D. BLASINGAME  
ADDRESS 445 WEST MAIN STREET  
CLARKSBURG, WV 26301  
ADDRESS 445 WEST MAIN STREET  
CLARKSBURG, WV 26301

017

COUNTY

4774 T

PERMIT NO.

(Unmanned) 8-0

State of West Virginia  
Department of Environmental Protection  
Office of Oil and Gas

Well Operator's Report of Well Work

Farm Name: Larry E. Warfield, et. Al Operator Well No: AW-12944

LOCATION: Elevation: 1240.30' Quadrangle: New Milton 7.5'

District: New Milton County: Doddridge

Latitude: 10,125 Feet South of: 39 Deg. 10 Min. 00 Sec.  
Longitude: 7,300 Feet West of: 80 Deg. 37 Min. 30 Sec.

Company: Dominion Transmission Inc.

Address:	Casing & Tubing	Used in Drilling	Left in Well	Cement Fill up Cu. Ft.
445 West Main Street	16"	40.05	40.05	5 sks Portland
Clarksburg, WV 26301	11-3/4"	349.75	349.75	211 sks Class A
Agent: Jim Blasingame	8-5/8"	1028.89	1028.89	124 sks Class A
Inspector: Tim Bennett	4-1/2"	2802.52	2802.52	710 sks Class A
Date Permit Issued: 1/27/2004				
Date Well Work Commenced: 5/13/04				
Date Well Work Completed: 7/12/04				
Verbal Plugging: N/A				
Date Permission Granted on: N/A				
Rotary X Cable Rig UDI Rig 4				
Total Depth (feet): 2820'				
Fresh Water Depth (ft.): 206', 670'				
Salt Water Depth (ft.): No Salt Water				
Is coal being mined in area (N/Y)? N				
Coal depths (ft):				

RECEIVED  
Office of Oil & Gas

FEB 06 2006

WV Department of  
Environmental Protection

OPEN FLOW DATA

Producing Formation: Gantz - Storage Pay Zone Depth (ft) 2,648' - 2,664'  
Gas: Initial Open flow: N/A MCF/d Oil: Initial Open flow Show Bbl/d  
Final open flow Show MCF/d Final Open flow Show Bbl/d  
Time of open flow between initial and final tests 2.5 Hours  
Static Rock Pressure 232 Psig (surface pressure) after 24 Hours

Second Producing Formation N/A Pay Zone Depth (ft) \_\_\_\_\_  
Gas: Initial Open flow: \_\_\_\_\_ MCF/d Oil: Initial Open flow \_\_\_\_\_ Bbl/d  
Final open flow \_\_\_\_\_ MCF/d Final Open flow \_\_\_\_\_ Bbl/d  
Time of open flow between initial and final tests \_\_\_\_\_ Hours  
Static Rock Pressure \_\_\_\_\_ Psig (surface pressure) after \_\_\_\_\_ Hours

NOTE: ON BACK OF THIS FORM PUT THE FOLLOWING: 1). DETAILS OF PERFORATED INTERVALS, FRACTURING OR STIMULATING, PHYSICAL CHANGE, ETC. 2). THE WELL LOG WHICH IS A SYSTEMATIC DETAILED GEOLOGICAL RECORD OF ALL FORMATIONS, INCLUDING COAL ENCOUNTERED BY THE WELLBORE.

Signed: [Signature]  
By: J. F. F. Renner  
Date: 2/1/06

FEB 10 2006

0000 4774 T

A W-12944 (Completion Information)

Perforated Gantz formation from 2652'- 2662' with 60 shots (Alpha Jet, .48" dia., 22.8" penetration, 6 jspt).

<u>Formation</u>	<u>Interval</u>	<u>Comments</u>
Sand/Shale	0-70'	
Shale/Red Rock	70-200'	
Sand/Shale	200-238'	Wet @ 206' - damp
Red Rock	238-390'	
Sand	390-450'	
Red Rock/ Shale	450-640'	
Sand Medium	640-680'	Wet @ 670' - damp
Sand/Black Shale	680-770'	
Coal	770-703'	
Red Rock / Shale	703-885'	
Sand / Shale Medium	885'-930'	
Sand	930-948'	
Grey Shale	948'-1180'	
Clean/White Sandstone	1180-1190'	
Grey Shale	1190-1240'	
Sand/Shale	1240-1262'	
1 <sup>st</sup> Salt Sand	1262-1335'	
Shale	1335-1380'	
2 <sup>nd</sup> Salt Sand	1380-1412'	
Shale	1412-1591'	
3 <sup>rd</sup> Salt Sand	1591-1732'	
Shale	1732-1850'	
Maxton	1850-1864'	
Shale	1864-2032'	
Blue Munday	2032-2058'	
Shale	2058-2210'	
Little Lime	2210-2224'	
Pencil Cave	2224-2250'	
Big Lime	2250-2362'	
Big Injun	2362-2404'	
Pocono Shale	2404-2483'	
Weir	2483-2517'	
Shale	2517-2652'	
Gantz	2652-2663'	
Devonian Shale	2663-2820'	

TD - 2820'  
11' KB

**RECEIVED**  
Office of Oil & Gas

FEB 0 5 2006

WV Department of  
Environmental Protection

FEB 1 0 2006