

Latitude

Longitude

Topo Location

7.5' Loc. \_\_\_\_\_ 15' Loc. \_\_\_\_\_  
(calc.) \_\_\_\_\_

Company \_\_\_\_\_

Farm \_\_\_\_\_

15' Quad \_\_\_\_\_  
(sec.) \_\_\_\_\_

7.5' Quad \_\_\_\_\_

District \_\_\_\_\_

WELL LOCATION PLAT

County 017 Permit 4770

(Smithton - Flint - Cobleskill)

State of West Virginia  
Department of Environmental Protection  
Office of Oil and Gas

Well Operator's Report of Well Work

Farm Name: UNDERWOOD, SHIRL

Operator Well No.: WM. UNDERWOOD #3  
Quadrangle: CENTERPOINT 7.5

LOCATION: Elevation: 1135

District: MCCLELLAN County: DODDRIDGE  
Latitude: 11,800 Feet South of 39 Deg. 25 Min. 00 Sec.  
Longitude: 9,725 Feet West of 80 Deg. 40 Min. 00 Sec.

Company: FLUHARTY ENTERPRISES, INC

Address: P O BOX 226 SALEM, WV 26426

Agent: THOMAS J. FLUHARTY

Inspector: MIKE UNDERWOOD

Date Permit Issued: 11/6/2003

Date Well Work Commenced: N/A

Date Well Work Completed: N/A

Verbal Plugging:

Date Permission granted on:

Rotary Cable Rig

Total Depth (feet): N/A

Fresh Water Depth (ft.): N/A

Salt Water Depth (ft.):

Is coal being mined in area (N/Y)? N/A

Coal Depths (ft.): N/A

Casing & Tubing	Used in drilling	Left in well	Cement fill up Cu. Ft.
N/A	N/A	N/A	N/A
THERE IS NO KNOWN INFORMATION AVAILABLE ON THIS WELL, REGARDING DRILLING, FRACTURING, AMOUNT OF PIPE IN HOLE OR ANY PRODUCING FORMATION DATA.			

OPEN FLOW DATA

Producing formation GORDON STRAY ? Pay zone depth (ft) N/A  
 Gas: Initial open flow N/A MCF/d Oil: Initial open flow N/A Bbl/d  
 Final open flow N/A MCF/d Final open flow N/A Bbl/d  
 Time of open flow between initial and final tests \_\_\_\_\_ Hours  
 Static rock Pressure N/A psig (surface pressure) after \_\_\_\_\_ Hours

Second producing formation \_\_\_\_\_ Pay zone depth (ft) \_\_\_\_\_  
 Gas: Initial open flow \_\_\_\_\_ MCF/d Oil: Initial open flow \_\_\_\_\_ Bbl/d  
 Final open flow \_\_\_\_\_ MCF/d Final open flow \_\_\_\_\_ Bbl/d  
 Time of open flow between initial and final tests \_\_\_\_\_ Hours  
 Static rock Pressure \_\_\_\_\_ psig (surface pressure) after \_\_\_\_\_ Hours

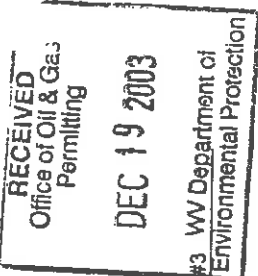
NOTE: ON BACK OF THIS FORM PUT THE FOLLOWING: 1). DETAILS OF PERFORATED INTERVALS, FRACTURING OR STIMULATING, PHYSICAL CHANGE, ETC. 2) THE WELL LOG WHICH IS A SYSTEMATIC DETAILED GEOLOGICAL RECORD OF ALL FORMATIONS, INCLUDING COAL ENCOUNTERED BY THE WELLBORE.

Signed: FLUHARTY ENTERPRISES, INC.

By: *James J. Fluharty*

Date: 12/17/2003

Feb 27, 2004



*AD*



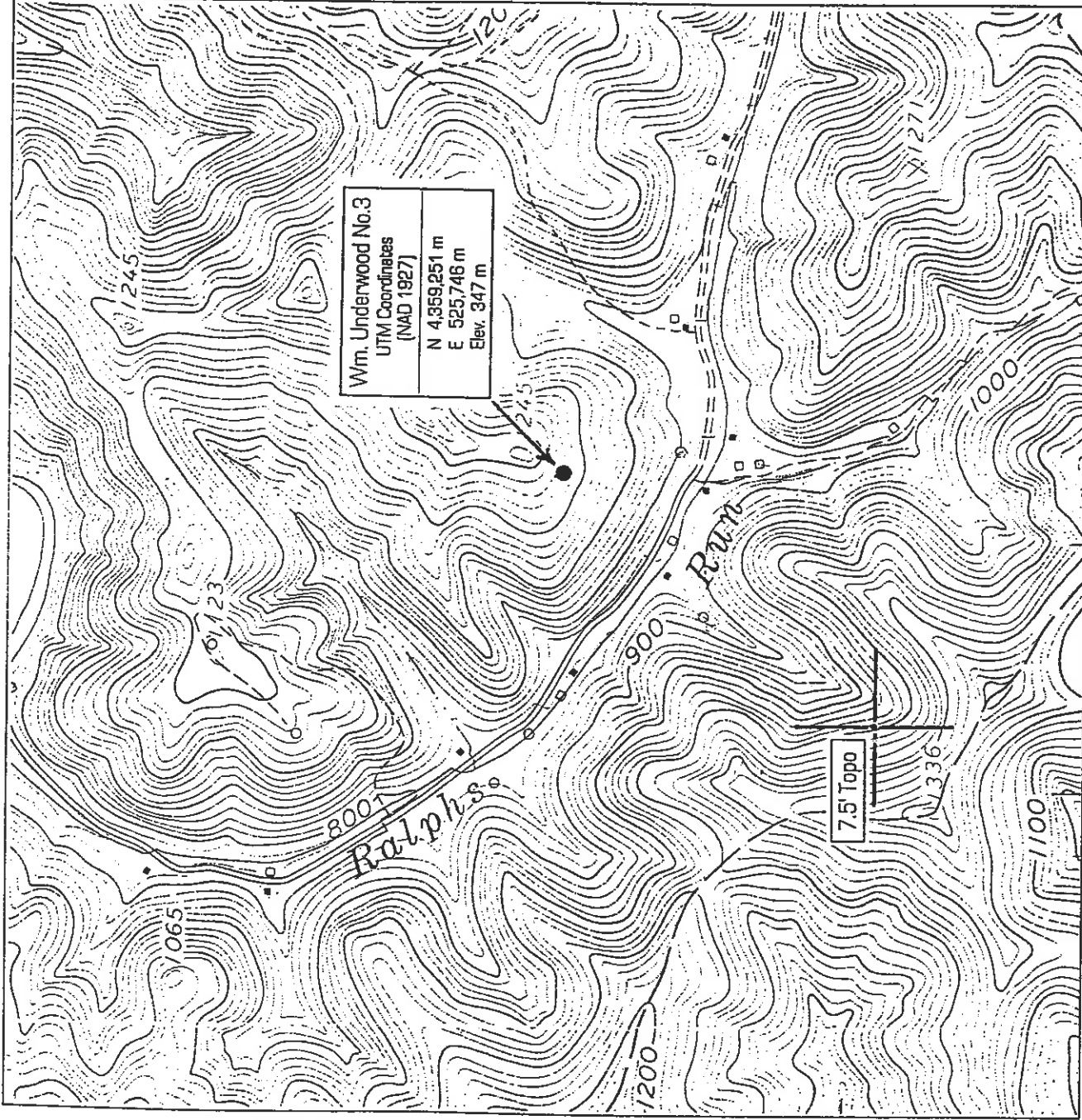
Longitude - 80° 42' 03.8"

9,725'

LATITUDE 39° 25' 00"

LONGITUDE 80° 40' 00"

Wm. Underwood No.3
UTM Coordinates (NAD 1927)
N 4359,251 m
E 525,746 m
Elev. 347 m



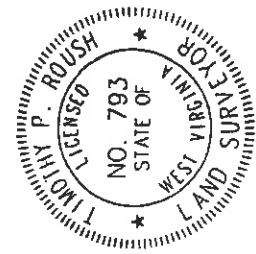
NOTE  
Well Latitude and Longitude and UTM  
coordinates established by DGPS.  
(Sub-Meter Mapping Grade) 9/3/03.

2.235  
1.84w

(H) DENOTES LOCATION OF WELL ON UNITED STATES TOPOGRAPHIC MAPS

FILE NO. 111-06  
DRAWING NO. 3  
SCALE 1" = 1000'  
MINIMUM DEGREE OF  
ACCURACY  
PROVEN SOURCE OF  
ELEVATION DGPS  
(Sub-Meter Mapping Grade)

I THE UNDERSIGNED, HEREBY CERTIFY THAT  
THIS PLAT IS CORRECT TO THE BEST OF MY  
KNOWLEDGE AND BELIEF AND SHOWS ALL THE  
INFORMATION REQUIRED BY LAW AND THE REGU-  
LATIONS ISSUED AND PRESCRIBED BY THE DEPART-  
MENT OF MINES.  
(SIGNED) Timothy P. Roush PS 793  
TIMOTHY P. ROUSH



WEST VIRGINIA  
Division of Environmental Protection  
Office of Oil and Gas  
1356 Hanford St.  
Charleston, West Virginia 25301



DATE September 4, 2003  
FARM Wm. Underwood NO. 3  
API WELL NO. 47-017 - 04770N

WELL TYPE: OIL  GAS  LIQUID INJECTION  WASTE DISPOSAL   
(IF "GAS") PRODUCTION  STORAGE  DEEP  SHALLOW  was 01770537  
LOCATION: ELEVATION 1,135' WATERSHED Ralph's Run  
DISTRICT McClellan COUNTY Doddridge  
QUADRANGLE Centerpoint 7.5' ACREAGE 93 AC.  
SURFACE OWNER Shirl Underwood LEASE ACREAGE  
OIL & GAS ROYALTY OWNER  
PROPOSED WORK: DRILL  CONVERT  DRILL DEEPER  REDRILL  FRACTURE OR  
STIMULATE  PLUG OFF OLD FORMATION  PERFORATE NEW  
FORMATION  OTHER PHYSICAL CHANGE IN WELL (SPECIFY) Apply for API Number

PLUG AND ABANDON  CLEAN OUT AND REPLUG   
TARGET FORMATION Gordon Stray ESTIMATED DEPTH  
WELL OPERATOR Fluharty Enterprises Inc. DESIGNATED AGENT Thomas J. Fluharty  
ADDRESS P.O. Box 226 ADDRESS P.O. Box 226  
Salem, WV 25426 Salem, WV 25426

0000 4770 N

