

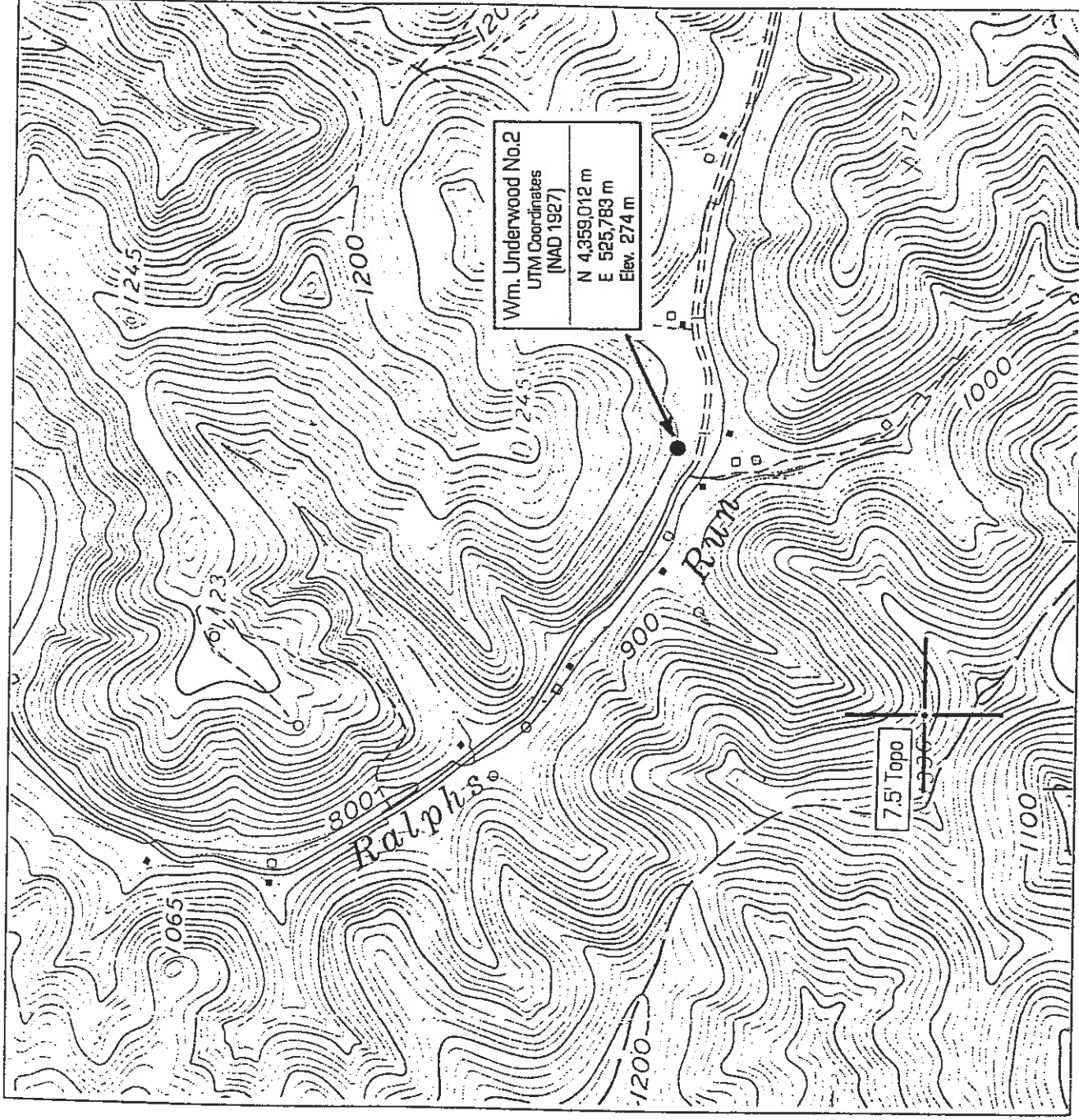
Longitude = 80°42'02.3"

9,600'

A-P

LATITUDE 39° 25' 00"

LONGITUDE 80° 40' 00"



Wm. Underwood No. 2	
UTM Coordinates (NAD 1927)	
N	4,359,012 m
E	525,783 m
Elev.	274 m

(+) DENOTES LOCATION OF WELL ON UNITED STATES TOPOGRAPHIC MAPS

FILE NO. 111-06
 DRAWING NO. 2
 SCALE 1" = 1000'
 MINIMUM DEGREE OF ACCURACY _____
 PROVEN SOURCE OF ELEVATION DGPS
 (Sub-Meter Mapping Grade)

I, THE UNDERSIGNED, HEREBY CERTIFY THAT THIS PLAT IS CORRECT TO THE BEST OF MY KNOWLEDGE AND BELIEF AND SHOWS ALL THE INFORMATION REQUIRED BY LAW AND THE REGULATIONS ISSUED AND PRESCRIBED BY THE DEPARTMENT OF MINES

(SIGNED) [Signature]
 TIMOTHY P. ROUSH

TIMOTHY P. ROUSH PS 793

WEST VIRGINIA

Division of Environmental Protection
 Office of Oil and Gas
 1356 Hansford St.
 Charleston, West Virginia 25301



DATE September 4, 2003

FARM Wm. Underwood NO. 2

API WELL NO. 47-017 - 04169N

WELL TYPE: OIL GAS LIQUID INJECTION _____ WASTE DISPOSAL _____

(IF "GAS") PRODUCTION STORAGE _____ DEEP _____ SHALLOW WGS: 01770538

LOCATION: ELEVATION 895' WATERSHED Ralph's Run

DISTRICT McClellan COUNTY Doddridge

QUADRANGLE Shirl Underwood CENTERPOINT 7.5'

SURFACE OWNER _____ ACREAGE 93 Ac.

OIL & GAS ROYALTY OWNER _____ LEASE NO. _____ LEASE ACREAGE _____

PROPOSED WORK: DRILL _____ CONVERT _____ DRILL DEEPER _____ REDRILL _____ FRACTURE OR STIMULATE _____ PLUG OFF OLD FORMATION _____ PERFORATE NEW FORMATION _____ OTHER PHYSICAL CHANGE IN WELL (SPECIFY) Apply for API Number

PLUG AND ABANDON _____ CLEAN OUT AND REPLUG _____

TARGET FORMATION Gordon Stray ESTIMATED DEPTH _____

WELL OPERATOR Fluharly Enterprises Inc. DESIGNATED AGENT Thomas J. Fluharly
 ADDRESS P.O. Box 226 ADDRESS P.O. Box 226

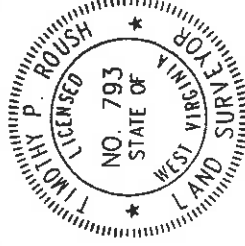
Salem, WV 26426

Salem, WV 26426

11/7/2003

NOTE

Well Latitude and Longitude and UTM coordinates established by DGPS, (Sub-Meter Mapping Grade) 9/3/03.



39 25

Latitude

Longitude

+

Umpire

Topo Location

7.5' Loc. _____ 15' Loc. _____
(calc.) _____

Company Fluharty Ent

Farm Underwood #2

15' Quad _____
(sec.) _____

7.5' Quad Centerpoint

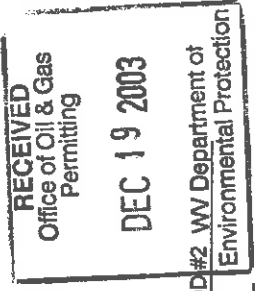
District McClelland

WELL LOCATION PLAT

County 17 Permit 4769N

(See U.S. Geol. Surv. Map)

State of West Virginia
Department of Environmental Protection
Office of Oil and Gas



Well Operator's Report of Well Work

Farm Name: UNDERWOOD, SHIRL
LOCATION: Elevation: 895

Operator Well No.: WM. UNDERWOOD #2 WV Department of Environmental Protection
Quadrangle: CENTERPOINT 7.5

District: MCCLELLAN County: DODDRIDGE
Latitude: 12,575 Feet South of 39 Deg. 25 Min. 00 Sec.
Longitude: 9,600 Feet West of 80 Deg. 40 Min. 00 Sec.

Company: FLUHARTY ENTERPRISES, INC

Address: P O BOX 226 SALEM, WV 26426

Agent: THOMAS J. FLUHARTY
Inspector: MIKE UNDERWOOD
Date Permit Issued: 11/6/2003

Date Well Work Commenced: N/A
Date Well Work Completed: N/A
Verbal Plugging:

Date Permission granted on:

Rotary Cable Rig

Total Depth (feet): N/A

Fresh Water Depth (ft.): N/A

Salt Water Depth (ft.):

Is coal being mined in area (N/Y)? N/A

Coal Depths (ft.): N/A

Casing & Tubing	Used in drilling	Left in well	Cement fill up Cu. Ft.
N/A	N/A	N/A	N/A
THERE IS NO KNOWN INFORMATION AVAILABLE ON THIS WELL, REGARDING DRILLING, FRACTURING, AMOUNT OF PIPE IN HOLE OR ANY PRODUCING FORMATION DATA.			

OPEN FLOW DATA

Producing formation GORDON STRAY ? Pay zone depth (ft) N/A
Gas: Initial open flow N/A MCF/d Oil: Initial open flow N/A Bbl/d
Final open flow N/A MCF/d Final open flow N/A Bbl/d
Time of open flow between initial and final tests _____ Hours

Static rock Pressure N/A psig (surface pressure) after _____ Hours

Second producing formation _____ Pay zone depth (ft) _____
Gas: Initial open flow _____ MCF/d Oil: Initial open flow _____ Bbl/d
Final open flow _____ MCF/d Final open flow _____ Bbl/d
Time of open flow between initial and final tests _____ Hours
Static rock Pressure _____ psig (surface pressure) after _____ Hours

NOTE: ON BACK OF THIS FORM PUT THE FOLLOWING: 1). DETAILS OF PERFORATED INTERVALS, FRACTURING OR STIMULATING, PHYSICAL CHANGE, ETC. 2) THE WELL LOG WHICH IS A SYSTEMATIC DETAILED GEOLOGICAL RECORD OF ALL FORMATIONS, INCLUDING COAL ENCOUNTERED BY THE WELLBORE:

Signed: FLUHARTY ENTERPRISES, INC
By: Steve K. Robinson
Date: 12/17/2003

D000 4769 N

FEB 27 2004

Well Operator's Report of Well Work

RECEIVED
Office of Oil & Gas
Permitting
DEC 19 2003
Environmental Protection

Farm Name: UNDERWOOD, SHIRL

Operator Well No.: WM UNDERWOOD #3

WV Department of Environmental Protection

LOCATION: Elevation: 1135

Quadrangle: CENTERPOINT 7.5

District: MCCLELLAN County: DODDRIIDGE
Latitude: 11,800 Feet South of 39 Deg. 25 Min. 00 Sec.
Longitude: 9,725 Feet West of 80 Deg. 40 Min. 00 Sec.

Company: FLUHARTY ENTERPRISES, INC

Address: P O BOX 226 SALEM, WV 26426

Casing & Tubing: N/A
Used in drilling: N/A
Left in well: N/A
Cement fill up Cu. Ft.: N/A

Agent: THOMAS J. FLUHARTY

Inspector: MIKE UNDERWOOD

Date Permit Issued: 11/6/2003

Date Well Work Commenced: N/A

Date Well Work Completed: N/A

Verbal Plugging:

Date Permission granted on:

Rotary Cable: R9

Total Depth (feet): N/A

Fresh Water Depth (ft.): N/A

Salt Water Depth (ft.):

Is coal being mined in area (N/Y)? N/A

Coal Depths (ft.): N/A

THERE IS NO KNOWN INFORMATION AVAILABLE ON THIS WELL, REGARDING DRILLING, FRACTURING, AMOUNT OF PIPE IN HOLE OR ANY PRODUCING FORMATION DATA.

OPEN FLOW DATA

Producing formation: GORDON STRAY ?

Pay zone depth (ft): N/A

Gas: Initial open flow: N/A

MCF/d

Oil: Initial open flow: N/A

Bbl/d

Final open flow: N/A

MCF/d

Final open flow: N/A

Bbl/d

Time of open flow between initial and final tests: Hours

Static rock Pressure: N/A

psig (surface pressure)

after: Hours

N/A

Hours

Second producing formation:

Pay zone depth (ft):

Gas: Initial open flow: MCF/d

Oil: Initial open flow: Bbl/d

Final open flow: MCF/d

Final open flow: Bbl/d

Time of open flow between initial and final tests: Hours

Static rock Pressure: psig (surface pressure)

after: Hours

Hours

NOTE: ON BACK OF THIS FORM PUT THE FOLLOWING: 1). DETAILS OF PERFORATED INTERVALS, FRACTURING OR STIMULATING, PHYSICAL CHANGE, ETC. 2) THE WELL LOG WHICH IS A SYSTEMATIC DETAILED GEOLOGICAL RECORD OF ALL FORMATIONS, INCLUDING COAL ENCOUNTERED BY THE WELLBORE.

Signed: FLUHARTY ENTERPRISES, INC

By: *James J. Fluharty*

Date: 12/17/2003