

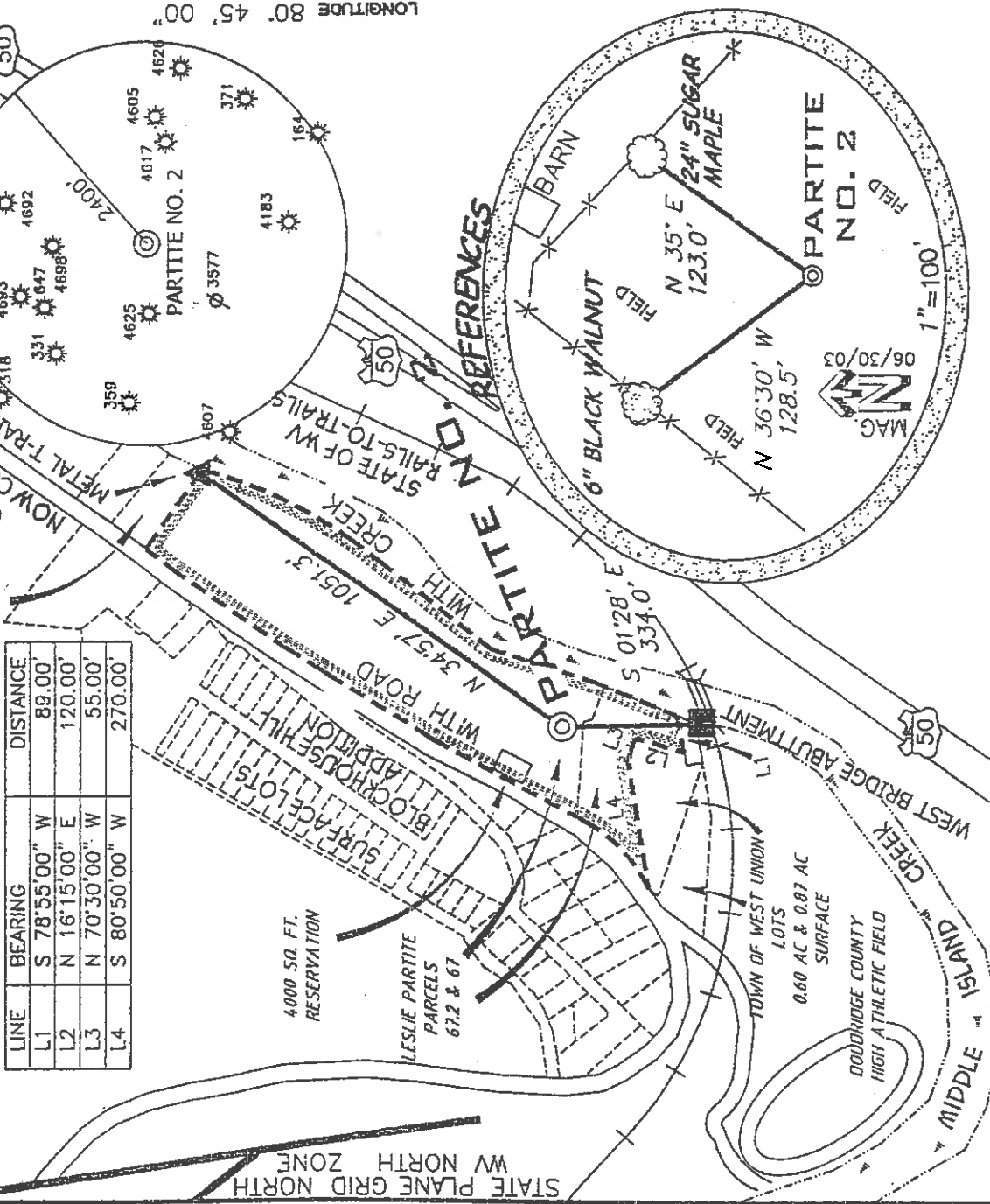
PARTITE LEASE 8.74 ACRES ± WELL NO. 2

LINE	BEARING	DISTANCE
L1	S 78°55'00" W	89.00
L2	N 16°15'00" E	120.00
L3	N 70°30'00" W	55.00
L4	S 80°50'00" W	270.00

NELLIE B. DAUGHERTY SURFACE

OLD U.S. ROUTE 50
NOW COUNTY ROUTE 50.130

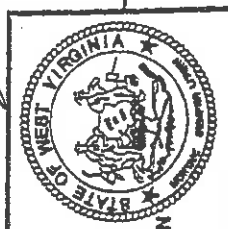
PROPOSED WELL
STATE PLANE NAD 27
COORDINATES
N) 290727
E) 1641240



(+) DENOTES LOCATION ON UNITED STATES TOPOGRAPHIC MAPS

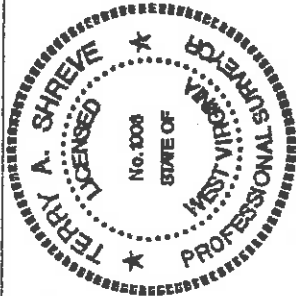
FILE NUMBER 030016
 DRAWING NUMBER WP2(W1-15)
 SCALE 1" = 400'
 MINIMUM DEGREE OF ACCURACY 1/200
 PROVEN SOURCE OF ELEVATION TOP OF KNOB
 ELEVATION 1210'

STATE OF WEST VIRGINIA
 DIVISION OF ENVIRONMENTAL PROTECTION
 OFFICE OF OIL AND GAS



P.S. Terry A. Shreve
 1006 2 Jay A. Shreve
 TERRY A. SHREVE
 LICENSED PROFESSIONAL SURVEYOR
 STATE OF WEST VIRGINIA
 No. 2008

I, THE UNDERSIGNED HEREBY CERTIFY THAT THIS PLAN IS CORRECT TO THE BEST OF MY KNOWLEDGE AND BELIEF AND SHOWS ALL THE INFORMATION REQUIRED BY LAW AND THE REGULATIONS ISSUED AND PRESCRIBED BY THE DEPARTMENT OF ENVIRONMENTAL PROTECTION



DATE: JULY 1, 2003
 OPERATORS WELL NO. PARTITE NO. 2
 API WELL NO.

WELL TYPE ON GAS LIQUID INJECTION WASTE DISPOSAL
 IF "GAS" PRODUCTION STORAGE DEEP SHALLOW PERMIT

LOCATION ELEVATION 784' WATERSHED MIDDLE ISLAND CREEK
 DISTRICT WEST UNION COUNTY DODDRIDGE

QUADRANGLE WEST UNION 7.5' LEASE NUMBER
 SURFACE OWNER LESLIE PARTITE ACREAGE 8.74 AC±
 OIL & GAS ROYALTY OWNER LESLIE PARTITE LEASE ACREAGE 8.74 AC±

PROPOSED WORK: DRILL CONVERT DRILL DEEPER REWELL FRACTURE OR STIMULATE PLUG OFF OLD FORMATION
 PERFORMATE NEW FORMATION OTHER PHYSICAL CHANGE (SPECIFY)

TARGET FORMATION GORDON CLEAN OUT & REFLUG
 ESTIMATED DEPTH 3000'

WELL OPERATOR KEY OIL COMPANY DESIGNATED AGENT JAN CHAPMAN
 ADDRESS 22 GARTON PLAZA WESTON, WV 26452 ADDRESS 22 GARTON PLAZA WESTON, WV 26452

Dodd 4757

(CENTRAL STATION 91)
6-6

AUG 01 2003

State of West Virginia
Division of Environmental Protection
Section of Oil and Gas

per

Well Operator's Report of Well Work

Farm Name: LESLIE PARTITE

Operator Well No. : PARTITE #2

LOCATION: Elevation: 784.00

Quadrangle: WEST UNION

District: WEST UNION
Latitude: 150 Feet South of 39 Deg. 17Min. 30 Sec.
Longitude: 4970 Feet West of 80 Deg. 45 Min. 00 Sec.

County: DODDRIDGE

Company: KEY OIL COMPANY
22 GARTON PLAZA
WESTON, WV 26452-0000

Agent: JAN E. CHAPMAN

Inspector: MIKE UNDERWOOD
Permit Issued: 07/28/03
Well Work Commenced: 12/21/03
Well Work Completed: 12/28/03

Verbal Plugging
Permission granted on: _____ Rig
Rotary X Cable 2515'
Total Depth (feet) 48', 163'
Fresh water depths (ft) 195'
Salt water depths (ft) NONE

Is coal being mined in area (Y / N)? N
Coal Depths (ft) : 263' (4')

OPEN FLOW DATA

Producing formation Keener
Gas: Initial open flow _____ MCF / d
Final open flow 2,768 MCF / d
Time of open flow between initial and final tests N/A
Static rock pressure 250 psig (surface pressure) after 96

1650' - 1680'
1680' - 1726'
2318' - 2368'

Pay zone depth (ft)
Oil: Initial open flow _____ Bbl / d
Oil: Final open flow _____ show Bbl / d
Hours _____
Oil: Final open flow _____ N/A
Hours _____

Second producing formation Commingled
Gas: Initial open flow _____ MCF / d
Final open flow _____ MCF / d
Time of open flow between initial and final tests _____
Static rock pressure _____ psig (surface pressure) after _____
Pay zone depth (ft) _____
Oil: Initial open flow _____ Bbl / d
Oil: Final open flow _____ Bbl / d
Hours _____
Time of open flow between initial and final tests _____
Static rock pressure _____ psig (surface pressure) after _____

NOTE: ON BACK OF THIS FORM PUT THE FOLLOWING: 1). DETAILS OF PERFORATED INTERVALS, FRACTURING OR STIMULATING, PHYSICAL CHANGE, ETC. 2). THE WELL LOG WHICH IS A SYSTEMATIC DETAILED GEOLOGICAL RECORD OF ALL FORMATIONS, INCLUDING COAL ENCOUNTERED BY THE WELLBORE.

For: KEY OIL COMPANY

By: *[Signature]*
Date: April 25, 2004

PRESIDENT

0000 4757

Casing & Tubing Size	Used in Drilling	Left in Well	Cement Fill Up Cu. Ft.
11 3/4"	130'	130'	50 sks To Surface
8 5/8"	787'	787'	175 sks To Surface
4 1/2"	2457'	2457'	250 sks

RECEIVED
Office of Oil & Gas

APR 30 2004

WV Department of
Environmental Protection

