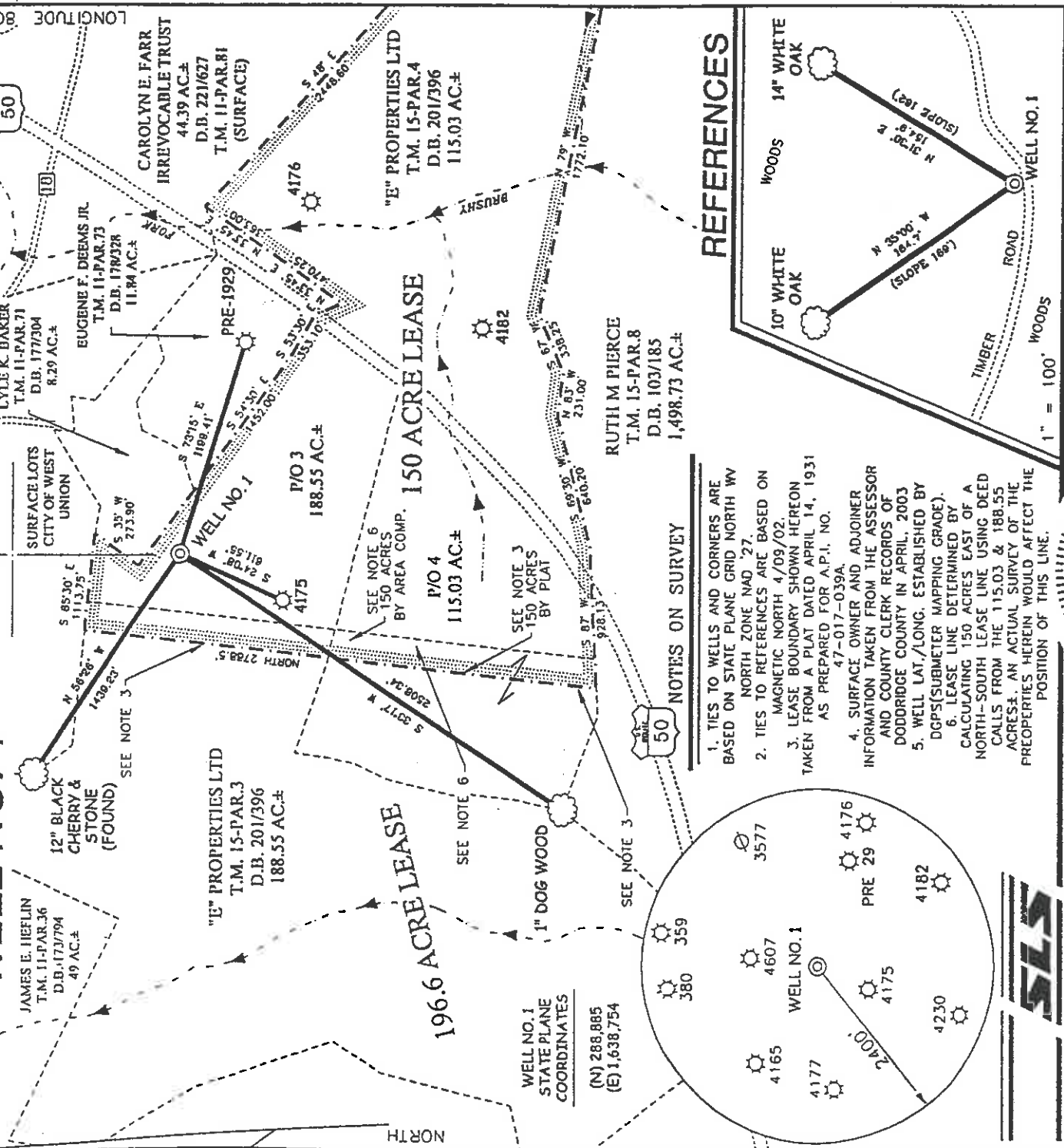


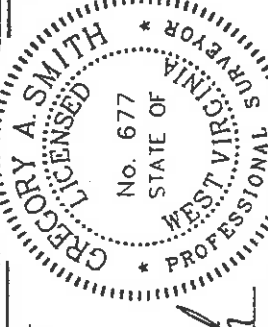
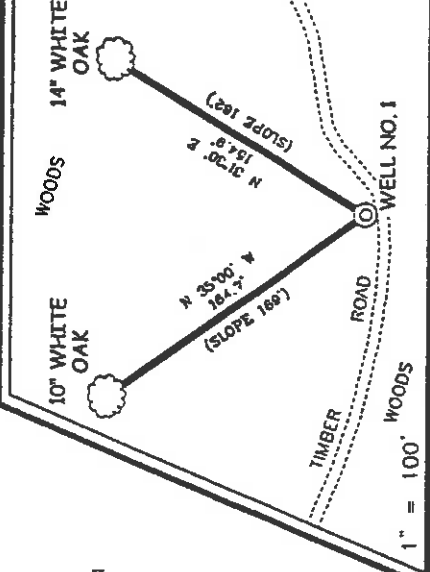
FORM WV 6  
 LONG. 80°46'34.6" LAT. 39°17'10.0"  
 CHEUVRONT/FARR LEASE  
 150 ACRES ±  
 WELL NO. 1



**NOTES ON SURVEY**

- TIES TO WELLS AND CORNERS ARE BASED ON STATE PLANE GRID NORTH WV NORTH ZONE NAD '27.
- TIES TO REFERENCES ARE BASED ON MAGNETIC NORTH 4/09/02.
- LEASE BOUNDARY SHOWN HEREON TAKEN FROM A PLAT DATED APRIL 14, 1931 AS PREPARED FOR A.P.I. NO. 47-017-039A.
- SURFACE OWNER AND ADJOINER INFORMATION TAKEN FROM THE ASSESSOR AND COUNTY CLERK RECORDS OF DODDRIIDGE COUNTY IN APRIL, 2003
- WELL LAT./LONG. ESTABLISHED BY DGPS (SUBMETER MAPPING GRADE).
- LEASE LINE DETERMINED BY CALCULATING 150 ACRES EAST OF A NORTH-SOUTH LEASE LINE USING DEED CALLS FROM THE 115.03 & 188.55 ACRES. AN ACTUAL SURVEY OF THE PREOPERTIES HEREIN WOULD AFFECT THE POSITION OF THIS LINE.

**REFERENCES**



I THE UNDERSIGNED, HEREBY CERTIFY THAT THIS PLAT IS CORRECT TO THE BEST OF MY KNOWLEDGE AND BELIEF AND SHOWS ALL THE INFORMATION REQUIRED BY LAW AND THE REGULATIONS ISSUED AND PRESCRIBED BY THE DIVISION OF ENVIRONMENTAL PROTECTION.

P.S. 677 Gregory A. Smith

MINIMUM DEGREE OF ACCURACY 1 / 200 FILE NO. 5183P1 (143-3)  
 SCALE 1" = 800'  
 PROVEN SOURCE TOP OF KNOB ELEVATION = 1,214'

WELL TYPE : OIL  GAS  LIQUID WASTE  INJECTION  DISPOSAL  "GAS" PRODUCTION  STORAGE  DEEP  SHALLOW   
 LOCATION : ELEVATION 1,038' WATERSHED BRUSHY FORK  
 DISTRICT WEST UNION COUNTY DODDRIIDGE  
 SURFACE OWNER "E" PROPERTIES LTD  
 ROYALTY OWNER TRIO PETROLEUM, ET AL  
 PROPOSED WORK :  
 DRILL  CONVERT  DRILL DEEPER  REDRILL  FRACTURE OR STIMULATE  PLUG AND ABANDON  CLEAN OUT AND REPLUG  OTHER   
 PHYSICAL CHANGE IN WELL (SPECIFY) \_\_\_\_\_ TARGET FORMATION GORDON  
 ESTIMATED DEPTH 3,000'

(+) DENOTES LOCATION OF WELL ON UNITED STATES TOPOGRAPHIC MAPS.  
 DATE APRIL 14, 20 03  
 OPERATORS WELL NO. CHEUVRONT/FARR #1  
 API WELL NO. 47-017-017 STATE COUNTY PERMIT NO. 04744

STATE OF WEST VIRGINIA  
 DIVISION OF ENVIRONMENTAL PROTECTION  
 OFFICE OF OIL AND GAS

WELL OPERATOR KEY OIL COMPANY DESIGNATED AGENT JAN CHAPMAN  
 ADDRESS 22 GARTON PLAZA WESTON, WV 26452  
 COUNTY NAME COUNTY QUADRANGLE WEST UNION 7.5  
 ACREAGE 188.5  
 LEASE ACREAGE 150  
 LEASE NO. \_\_\_\_\_  
 PERMIT NO. 4744  
 DATE APRIL 18 2003

(Smittley - Flied - Subline 99)

State of West Virginia  
Division of Environmental Protection  
Section of Oil and Gas

*AP*

Well Operator's Report of Well Work

Farm Name: "E" PROPERTIES, LTD.

Operator Well No. : CHEUVRONT/FARR #1

LOCATION: Elevation: 1038.00

Quadrangle: WEST UNION

District: WEST UNION

County: DODDRIDGE

Latitude: 2000 Feet South of 39 Deg. 17 Min. 30 Sec.

Longitude: 7480 Feet West of 80 Deg. 45 Min. 00 Sec.

Company: KEY OIL COMPANY  
22 GARTON PLAZA  
WESTON, WV 26452-0000

Agent: JAN E. CHAPMAN

Inspector: MIKE UNDERWOOD  
Permit Issued: 07/17/03  
Well Work Commenced: 09/11/03  
Well Work Completed: 09/17/03

Verbal Plugging  
Permission granted on: \_\_\_\_\_ Rig  
Rotary X Cable \_\_\_\_\_  
Total Depth ( feet ) 2769'  
Fresh water depths ( ft ) 109'  
Salt water depths ( ft ) NONE

Is coal being mined in area ( Y / N )? N  
Coal Depths ( ft ) : 18' (3')

Casing & Tubing Size	Used in Drilling	Left In Well	Cement Fill Up Cu. Ft.
8 5/8"	1051'	1051'	235 sks To Surface
4 1/2"	2679'	2679'	250 sks

OPEN FLOW DATA

Big Injun Weir Gordon

Producing formation \_\_\_\_\_ MCF / d

Gas: Initial open flow 156 MCF / d Pay zone depth ( ft ) 1925' - 2002'

Final open flow 539 MCF / d Oil: Initial open flow 0 Bbl / d 2150' - 2248'

Time of open flow between initial and final tests N/A Oil: Final open flow show Bbl / d 2548' - 2600'

Static rock pressure 310 psig ( surface pressure ) after 96 Hours

Second producing formation Commingled

Gas: Initial open flow \_\_\_\_\_ MCF / d Pay zone depth ( ft ) \_\_\_\_\_ Bbl / d

Final open flow \_\_\_\_\_ MCF / d Oil: Initial open flow \_\_\_\_\_ Bbl / d

Time of open flow between initial and final tests \_\_\_\_\_ Hours

Static rock pressure \_\_\_\_\_ psig ( surface pressure ) after \_\_\_\_\_ Hours

RECEIVED  
Office of Oil & Gas  
Office of Chief  
JAN 23 2004  
WV Department of  
Environmental Protection

2000: 4744

NOTE: ON BACK OF THIS FORM PUT THE FOLLOWING: 1). DETAILS OF PERFORATED INTERVALS, FRACTURING OR STIMULATING, PHYSICAL CHANGE, ETC. 2). THE WELL LOG WHICH IS A SYSTEMATIC DETAILED GEOLOGICAL RECORD OF ALL FORMATIONS, INCLUDING COAL ENCOUNTERED BY THE WELLBORE.

For: KEY OIL COMPANY  
By: *[Signature]*  
Date: January 11, 2004

PRESIDENT

FEB 13 2004

Cheuvront #1 (47-017-4744)  
Three Stage Foam Frac – BJ Services

1 <sup>st</sup> Stage:	Gordon ( 15 holes ) ( 2567' to 2594' )	60 Quality Foam. 500 gal. 15% HCL. 40,000# 20/40 sand, 420,000 SCF N2, 615 bbls foam.
2 <sup>nd</sup> Stage:	Weir ( 10 holes ) ( 2154' to 2222' )	60 Quality Foam. 750 gal 15% HCL. 25,000# 20/40 sand, 310,000 SCF N2, 450 bbls foam.
3 <sup>rd</sup> Stage:	Big Injun ( 10 holes ) ( 1926' to 1950' )	60 Quality Foam. 750 gal 15% HCL. 40,000# 20/40 sand, 410,000 SCF N2, 610 bbls foam.

WELL LOG

KB-GL	0	10	
Fill	10	14	
Sand	14	18	
Coal	18	21	
Sand & Shale	21	56	
Shale & Red Rock	56	82	
Sand & Shale	82	121	
Sand	121	136	
Shale & Red Rock	136	155	
Sand & Shale	155	295	
Sand	295	322	
Sand & Shale	322	362	
Red Rock	362	384	
Sand & Shale	384	420	
Sand	420	460	
Sand & Shale	460	528	
Sand	528	568	
Sand & Shale	568	769	
Red Rock	769	780	
Sand & Shale	780	1810	
Little Lime	1810	1825	
Shale	1825	1840	
Big Lime	1840	1925	
Big Injun	1925	2002	
Shale	2002	2150	
Weir	2150	2248	
Shale	2248	2350	
Berea	2350	2362	
Siltstone & Shale	2362	2546	
Gordon	2546	2600	
Shale	2600	2769	
TD	2769		

Damp @ 109'

**Gas Checks**  
1994' – No Show  
2046' – No Show  
2612' – 10/10<sup>ths</sup> 2" w/water