

# C.C. MOBLEY HEIRS LEASE

## 1 ACRE ± WELL NO. 1

C.C. MOBLEY  
STATE PLANE  
COORDINATES  
(N) 291,870  
(E) 1,648,074

DANNY CANTRELL  
67.25 ACRES\*  
(SURFACE)

S 79°10' W  
2274.60'

20" YELLOW  
POPLAR

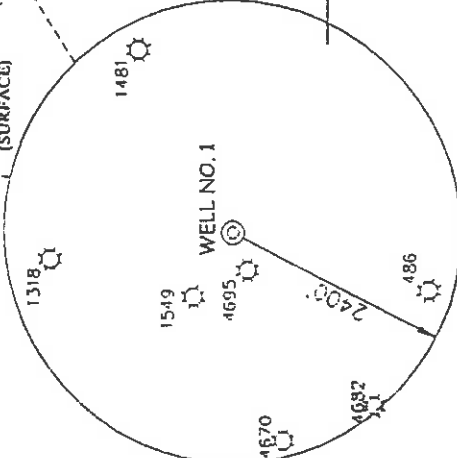
THOMAS BARNES  
34.12 ACRES\*  
(SURFACE)

ELLA ROSE  
TATE HEIRS  
10.86 ACRES\*  
(SURFACE)

LEONCE LEBEL  
90 ACRES\*  
(SURFACE)

THOMAS BARNES  
15.5 ACRES\*  
(SURFACE)

ELLA ROSE  
TATE HEIRS  
10.86 ACRES\*  
(SURFACE)

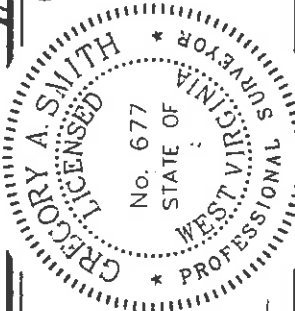


### NOTES ON SURVEY

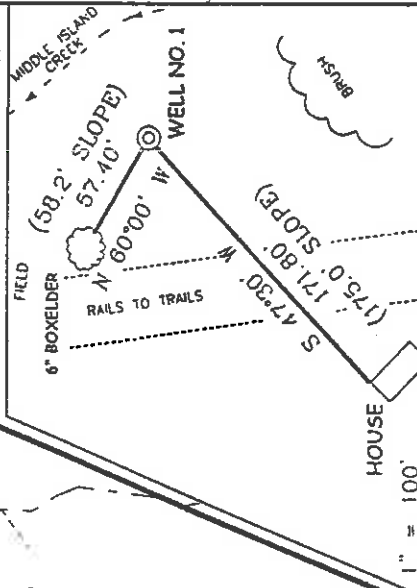
1. TIES TO WELLS AND CORNERS ARE BASED ON STATE PLANE GRID NORTH WV NORTH ZONE NAD '27.
2. TIES TO REFERENCES ARE BASED ON MAGNETIC NORTH 4/07/03.
3. LEASE BOUNDARY SHOWN HEREON TAKEN FROM A TITLE OPINION DATED APRIL 7, 2003 AS PREPARED BY GARY MORRIS, LAWYER.
4. SURFACE OWNER AND ADJOINER INFORMATION TAKEN FROM THE ASSESSOR AND COUNTY CLERK RECORDS OF DODDRIIDGE COUNTY IN JUNE, 2002.
5. WELL LAT./LONG. ESTABLISHED BY DGPS (SUBMETER MAPPING GRADE).
6. DRILLING WAIVER NEEDS TO BE ACQUIRED DUE TO THE PROPOSED WELL BEING WITHIN 200' OF AN EXISTING HOUSE

I THE UNDERSIGNED, HEREBY CERTIFY THAT THIS PLAT IS CORRECT TO THE BEST OF MY KNOWLEDGE AND BELIEF AND SHOWS ALL THE INFORMATION REQUIRED BY LAW AND THE REGULATIONS ISSUED AND PRESCRIBED BY THE DIVISION OF ENVIRONMENTAL PROTECTION.

P.S. *Gregory A. Smith*  
677



### REFERENCES



(-)- DENOTES LOCATION OF WELL ON UNITED STATES TOPOGRAPHIC MAPS.

DATE APRIL 21 20 03  
OPERATORS WELL NO. C.C. MOBLEY HEIRS NO. 1  
API NO. 47  
WELL NO. 017  
STATE COUNTY PERMIT NO. 04735

MINIMUM DEGREE OF ACCURACY 1 / 200 FILE NO. 5239PI (147-1)  
PROVEN SOURCE OF ELEVATION TOP OF KNOB ELEVATION = 1295'  
SCALE 1" = 500'

WELL TYPE: OIL  GAS  INJECTION  WASTE  LIQUID  DISPOSAL  "GAS" PRODUCTION  STORAGE  DEEP  SHALLOW

LOCATION: ELEVATION 780' WATERSHED MIDDLE ISLAND CREEK

DISTRICT WEST UNION COUNTY DODDRIIDGE QUADRANGLE SMITHBURG 7.5'

SURFACE OWNER THOMAS L. BARNES (TAXED) CAROLYN A. LEGGETT, ET AL (LAND CONTRACT)

ROYALTY OWNER J.M. MOBLEY, ET AL LEASE ACRES 1 ±

PROPOSED WORK: DRILL  CONVERT  DRILL DEEPER  REDRILL  FRACTURE OR STIMULATE  PLUG OFF OLD

FORMATION PERFORATE NEW FORMATION  PLUG AND ABANDON  CLEAN OUT AND REPLUG  OTHER

PHYSICAL CHANGE IN WELL (SPECIFY) TARGET FORMATION GORDON ESTIMATED DEPTH 3,000'

WELL OPERATOR KEY OIL COMPANY DESIGNATED AGENT JAN CHAPMAN  
ADDRESS 22 CARTON PLAZA WESTON, WV 26452

*(Smithton - Flint - C.A.O. - 99)*



No. 4

State of West Virginia  
Division of Environmental Protection  
Section of Oil and Gas

## Well Operator's Report of Well Work

Farm Name: THOMAS L. BARNES

Operator Well No. : C.C. MOBLEY #1.

LOCATION: Elevation: 780.00

Quadrangle: SMITHBURG

District: WEST UNION  
Latitude: 14040 Feet South of 39 Deg. 20 Min. 00 Sec.  
Longitude: 9940 Feet West of 80 Deg. 42 Min. 30 Sec.

County: DODDRIDGE

Company: KEY OIL COMPANY  
22 GARTON PLAZA  
WESTON, WV 26452-0000

Agent: JAN E. CHAPMAN

Inspector: MIKE UNDERWOOD  
Permit Issued: 06/03/03  
Well Work Commenced: 07/28/03  
Well Work Completed: 08/01/03Verbal Plugging  
Permission granted on: \_\_\_\_\_ Rig  
Rotary X Cable \_\_\_\_\_  
Total Depth ( feet ) 2456'  
Fresh water depths ( ft ) 60', 203'  
Salt water depths ( ft ) NONEIs coal being mined in area ( Y / N ) ? N  
Coal Depths ( ft ) : NONE

## OPEN FLOW DATA

Keener  
Big Injun  
Squaw  
GordonProducing formation \_\_\_\_\_  
Gas: Initial open flow \_\_\_\_\_ MCF / d  
Final open flow 1007 MCF / d  
Time of open flow between initial and final tests \_\_\_\_\_ N/A \_\_\_\_\_ Hours  
Static rock pressure 200 psig ( surface pressure ) after 96 \_\_\_\_\_ Hours1598' - 1661'  
1664' - 1692'  
1710' - 1726'  
2272' - 2329'Second producing formation Commingle  
Gas: Initial open flow \_\_\_\_\_ MCF / d  
Final open flow \_\_\_\_\_ MCF / d  
Time of open flow between initial and final tests \_\_\_\_\_ Hours  
Static rock pressure \_\_\_\_\_ psig ( surface pressure ) after \_\_\_\_\_ HoursPay zone depth ( ft ) \_\_\_\_\_  
Oil: Initial open flow \_\_\_\_\_ Bbl / d  
Oil: Final open flow \_\_\_\_\_ Bbl / d  
Hours \_\_\_\_\_

NOTE: ON BACK OF THIS FORM PUT THE FOLLOWING: 1). DETAILS OF PERFORATED INTERVALS, FRACTURING OR STIMULATING, PHYSICAL CHANGE, ETC. 2). THE WELL LOG WHICH IS A SYSTEMATIC DETAILED GEOLOGICAL RECORD OF ALL FORMATIONS, INCLUDING COAL ENCOUNTERED BY THE WELLBORE.

For: KEY OIL COMPANY

By:   
Date: January 3, 2004

PRESIDENT

FEB 13 2004

DODD 4735

**C. C. Mobley #1 (47-017-4735)  
Two Stage Foam Frac – Universal Well Services**

1 <sup>st</sup> Stage:	Gordon ( 12 holes ) ( 2313' to 2327' )	60 Quality Foam. 500 gal. 15% HCL. 35,000# 20/40 sand, 370,000 SCF N2, 425 bbls foam.
2 <sup>nd</sup> Stage:	Squaw ( 10 holes ) ( 1714' to 1718' ) Big Injun ( 12 holes ) ( 1671' to 1690' ) Keener ( 15 holes ) ( 1603' to 1627' )	60 Quality Foam. 750 gal 15% HCL. 40,000# 20/40 sand, 410,000 SCF N2, 525 bbls foam.

**WELL LOG**

KB-GL	0	10	
Sand & Shale	10	38	
Red Rock	38	55	
Sand	55	87	
Sand & Shale	87	314	1" water @ 60'
Sand	314	319	3" water @ 203'
Sand & Shale	319	820	
Sand	820	968	
Sand & Shale	968	1501	
Little Lime	1501	1520	
Sand & Shale	1520	1538	
Big Lime	1538	1598	
Keener	1598	1661	
Shale	1661	1664	
Big Injun	1664	1692	
Shale	1692	1710	
Squaw	1710	1726	
Shale	1726	1870	
Weir	1870	1960	
Shale	1960	2064	
Berea	2064	2094	
Sand & Shale	2094	2272	
Gordon	2272	2329	
Shale	2329	2456	
TD	2456		

**Gas Checks**  
 1160' – Oil Odor  
 1449' – No Show  
 1765' – No Show  
 2265' - Odor  
 2456' – Odor