

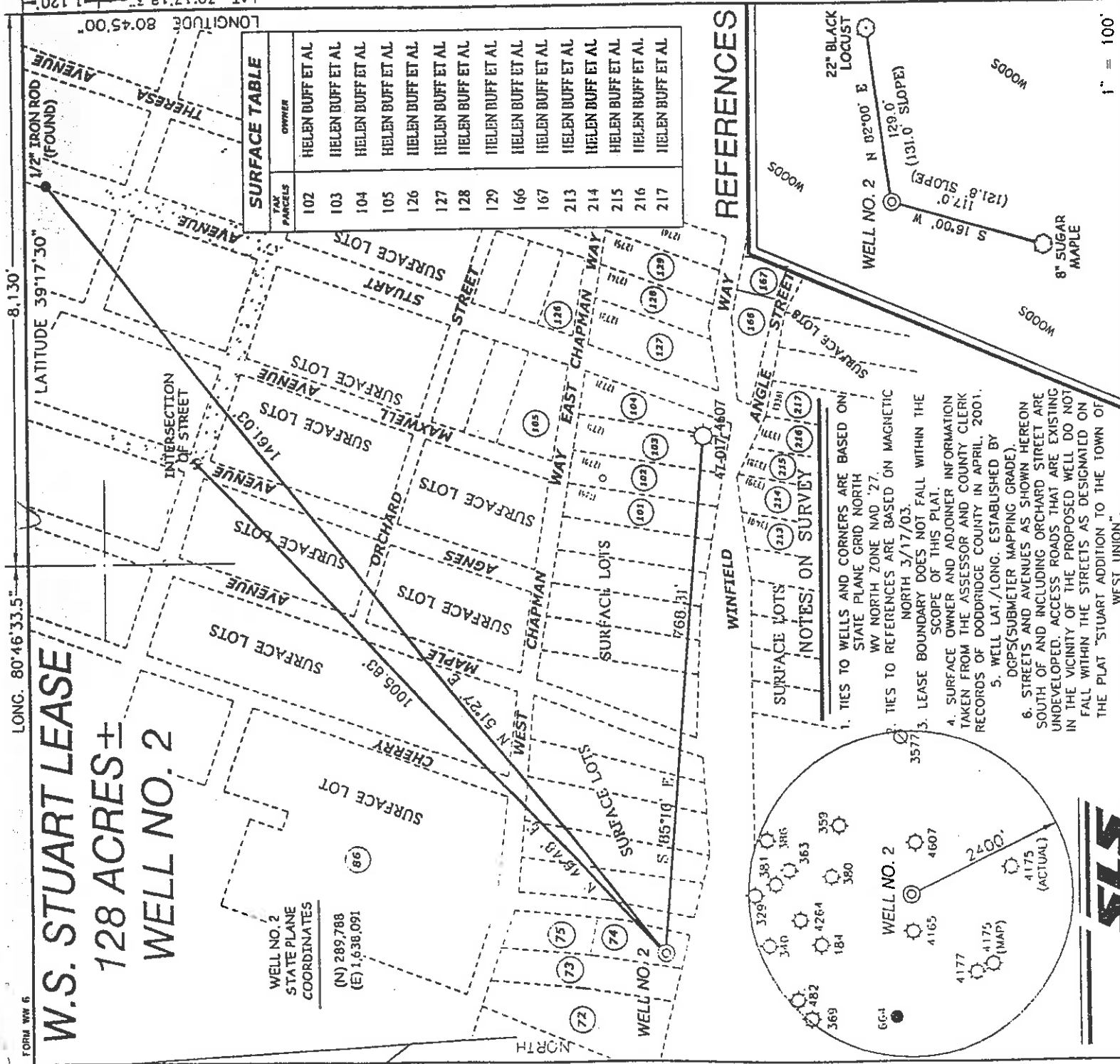
LONG. 80°46'33.5" LATITUDE 39°17'30"

W.S. STUART LEASE 128 ACRES ± WELL NO. 2

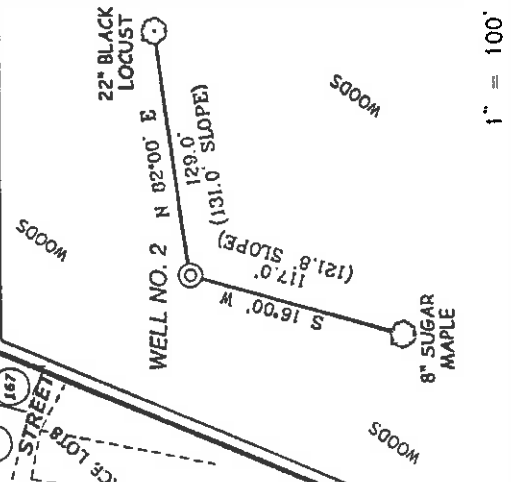
WELL NO. 2
STATE PLANE
COORDINATES
(N) 289,788
(E) 1,638,091

SURFACE TABLE	
TAX PARCELS	OWNER
102	HELEN BUFF ET AL
103	HELEN BUFF ET AL
104	HELEN BUFF ET AL
105	HELEN BUFF ET AL
126	HELEN BUFF ET AL
127	HELEN BUFF ET AL
128	HELEN BUFF ET AL
129	HELEN BUFF ET AL
166	HELEN BUFF ET AL
167	HELEN BUFF ET AL
213	HELEN BUFF ET AL
214	HELEN BUFF ET AL
215	HELEN BUFF ET AL
216	HELEN BUFF ET AL
217	HELEN BUFF ET AL

LONGITUDE 80°45'00" LAT. 39°17'18.3" 1.120'



REFERENCES



NOTES ON SURVEY

1. TIES TO WELLS AND CORNERS ARE BASED ON STATE PLANE GRID NORTH WV NORTH ZONE NAD '27.

2. TIES TO REFERENCES ARE BASED ON MAGNETIC NORTH 3/17/03.

3. LEASE BOUNDARY DOES NOT FALL WITHIN THE SCOPE OF THIS PLAT.

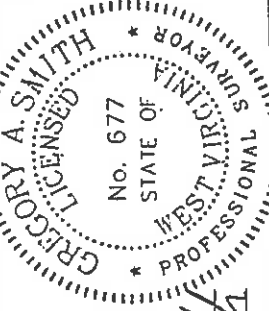
4. SURFACE OWNER AND ADJOINER INFORMATION TAKEN FROM THE ASSESSOR AND COUNTY CLERK RECORDS OF DODDRIDGE COUNTY IN APRIL, 2001.

5. WELL LAT./LONG. ESTABLISHED BY DGPS (SUBMETER MAPPING GRADE).

6. STREETS AND AVENUES AS SHOWN HEREON SOUTH OF AND INCLUDING ORCHARD STREET ARE UNDEVELOPED. ACCESS ROADS THAT ARE EXISTING IN THE VICINITY OF THE PROPOSED WELL DO NOT FALL WITHIN THE STREETS AS DESIGNATED ON THE PLAT "STUART ADDITION TO THE TOWN OF WEST UNION".



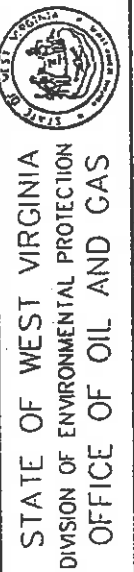
1" = 100'



I THE UNDERSIGNED, HEREBY CERTIFY THAT THIS PLAT IS CORRECT TO THE BEST OF MY KNOWLEDGE AND BELIEF AND SHOWS ALL THE INFORMATION REQUIRED BY LAW AND THE REGULATIONS ISSUED AND PRESCRIBED BY THE DEPARTMENT OF ENVIRONMENTAL PROTECTION.

P.S. 677
Gregory A. Smith

(+) DENOTES LOCATION OF WELL ON UNITED STATES TOPOGRAPHIC MAPS.
DATE MARCH 20 20 03
OPERATORS WELL NO. W.S. STUART NO.2
API WELL NO. 47-017-04734
STATE COUNTY PERMIT



STATE OF WEST VIRGINIA
DIVISION OF ENVIRONMENTAL PROTECTION
OFFICE OF OIL AND GAS
FILE NO. W729P2 (140-43)
SCALE 1" = 200'
BENCHMARK ELEVATION 805'

WELL TYPE : OIL GAS LIQUID WASTE INJECTION DISPOSAL "GAS" PRODUCTION STORAGE DEEP SHALLOW

LOCATION : ELEVATION 1,086' WATERSHED MIDDLE ISLAND CREEK
DISTRICT WEST UNION COUNTY DODDRIDGE QUADRANGLE WEST UNION 7.5'
SURFACE OWNER HELEN BUFF ET AL ACREAGE LOTS STUART ADDITION
ROYALTY OWNER W.S. STUART HEIRS LEASE ACREAGE 128 LEASE NO. _____

PROPOSED WORK :
DRILL CONVERT DRILL DEEPER REDRILL FRACTURE OR STIMULATE PLUG OFF OLD FORMATION PERFORATE NEW FORMATION PLUG AND ABANDON CLEAN OUT AND REPLUG OTHER GORDON
PHYSICAL CHANGE IN WELL (SPECIFY) _____ TARGET FORMATION _____ ESTIMATED DEPTH 3,000'

WELL OPERATOR KEY OIL COMPANY DESIGNATED AGENT JAN CHAPMAN
ADDRESS 22 GARTON PLAZA WESTON, WV 26452 ADDRESS 22 GARTON PLAZA WESTON, WV 26452

(Submitted: Flint - Sebelius 99)

COUNTY NAME DODD PERMIT 4734

State of West Virginia
Division of Environmental Protection
Section of Oil and Gas

W.E.

Well Operator's Report of Well Work

Farm Name: HELEN BUFF, ET AL

Operator Well No. : W.S. STUART #2

LOCATION: Elevation: 1086.00

Quadrangle: WEST UNION

District: WEST UNION
Latitude: 1120 Feet South of 39 Deg. 17 Min. 30 Sec.
Longitude: 8130 Feet West of 80 Deg. 45 Min. 00 Sec.

County: DODDRIDGE

Company: KEY OIL COMPANY
22 GARTON PLAZA
WESTON, WV 26452-0000

Agent: JAN E. CHAPMAN

Inspector: MIKE UNDERWOOD
Permit Issued: 05/21/03
Well Work Commenced: 09/07/03
Well Work Completed: 09/17/03

Verbal Plugging
Permission granted on: _____ Rig
Rotary X Cable _____
Total Depth (feet) 2834'
Fresh water depths (ft) 44'
Salt water depths (ft) NONE

Is coal being mined in area (Y / N)? N
Coal Depths (ft): NONE

OPEN FLOW DATA

Casing & Tubing Size	Used in Drilling	Left In Well	Cement Fill Up Cu. Ft.
8 5/8"	1054'	1054'	250 sks To Surface
4 1/2"	2736'	2736'	250 sks

Producing formation Big Injun
Gas: Initial open flow Gordon MCF / d
Final open flow 696 MCF / d
Time of open flow between initial and final tests N/A Hours
Static rock pressure 300 psig (surface pressure) after 96 Hours

Second producing formation Commingle
Gas: Initial open flow _____ MCF / d
Final open flow _____ MCF / d
Time of open flow between initial and final tests _____ Hours
Static rock pressure _____ psig (surface pressure) after _____ Hours

Pay zone depth (ft) 1986' - 2068'
Oil: Initial open flow 0 Bbl / d
Oil: Final open flow show Bbl / d
Time of open flow between initial and final tests _____ Hours
Static rock pressure _____ psig (surface pressure) after _____ Hours

RECEIVED
Office of Oil & Gas
Office of Chief
Hours
JAN 23 2004
Department of Environmental Protection

NOTE: ON BACK OF THIS FORM PUT THE FOLLOWING: 1). DETAILS OF PERFORMED INTERVALS, FRACTURING OR STIMULATING, PHYSICAL CHANGE, ETC. 2). THE WELL LOG WHICH IS A SYSTEMATIC DETAILED GEOLOGICAL RECORD OF ALL FORMATIONS, INCLUDING COAL ENCOUNTERED BY THE WELLBORE.

For: KEY OIL COMPANY

By: J. Chapman
Date: January 11, 2004

PRESIDENT

FEB 13 2004

DODD 4734

