

# MCKEAN LEASE 29.93 ACRES ± WELL NO. 1

HUGH & EARLDINE  
SHENCER  
18.9 ACRES ±  
(SURFACE)

FENCE POST  
AT 3-WAY  
INTERSECTION

47-017-4700

HANGING ROCK ADDITION  
(LOTS)  
(SURFACE)

TENSIL D. DAVIS  
20.89 ACRES ±  
(SURFACE)

STUMP HOLE AT  
3-WAY  
FENCE CORNER

STONE PILE  
AT 3-WAY  
FENCE CORNER

CHARLES V. GASKINS ET AL  
18.7 ACRES ±  
(SURFACE)

WELL NO. 1

HAROLD F. ROBINSON ET AL  
26 ACRES ±  
(SURFACE)

WELL NO. 1  
STATE PLANE  
COORDINATES  
(N) 295,084  
(E) 1,645,909

FRANKLIN BUTLER  
AND KEY OIL CO.  
13.3 ACRES ±  
(SURFACE)

FRANKLIN BUTLER  
AND KEY OIL CO.  
14.63 ACRES ±  
(SURFACE)

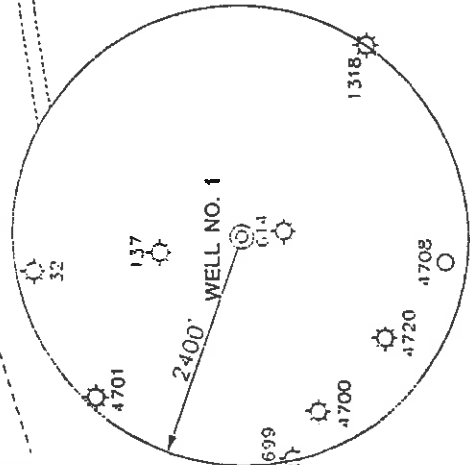
HAROLD F. ROBINSON ET AL  
0.55 ACRES ±  
(SURFACE)

KEY OIL COMPANY  
170.8837 ACRES ±  
(SURFACE)

DANNY L. & BARBARA CANTRELL  
PO 6732 ACRES ±  
(SURFACE)

47-017-4720

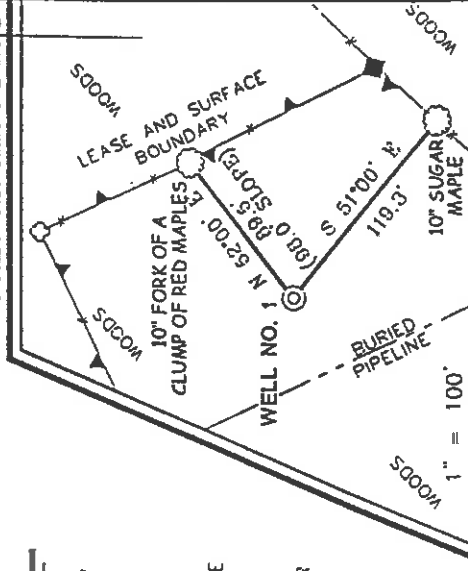
WELL



### NOTES ON SURVEY

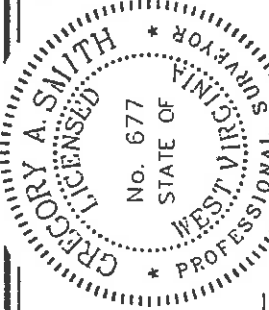
1. TIES TO WELLS AND CORNERS ARE BASED ON STATE PLANE GRID NORTH WV NORTH ZONE NAD '27. MAGNETIC NORTH 03/4/03.
2. TIES TO REFERENCES ARE BASED ON LEASE BOUNDARY SHOWN HEREON TAKEN FROM DEEDS AS RECORDED IN THE DODDRIDGE COUNTY CLERKS OFFICE IN DEED BOOKS 22 & 25 ON PAGES 351.
3. LEASE BOUNDARY SHOWN HEREON TAKEN FROM DEEDS AS RECORDED IN THE DODDRIDGE COUNTY CLERKS OFFICE IN DEED BOOKS 22 & 25 ON PAGES 351.
4. SURFACE OWNER AND ADJOINER INFORMATION TAKEN FROM THE ASSESSOR AND COUNTY CLERK RECORDS OF DODDRIDGE COUNTY IN FEBRUARY, 2003.
5. WELL LAT./LONG. ESTABLISHED BY DGPS(SUBMETER MAPPING GRADE).

### REFERENCES



I THE UNDERSIGNED, HEREBY CERTIFY THAT THIS PLAT IS CORRECT TO THE BEST OF MY KNOWLEDGE AND BELIEF AND SHOWS ALL THE INFORMATION REQUIRED BY LAW AND THE REGULATIONS ISSUED AND PRESCRIBED BY THE DIVISION OF ENVIRONMENTAL PROTECTION.

P S  
677 *Gregory A. Smith*



(+) DENOTES LOCATION OF WELL ON UNITED STATES TOPOGRAPHIC MAPS.

DATE MARCH 4, 2005

OPERATORS WELL NO. 1

API

WELL NO. 47-017-04733

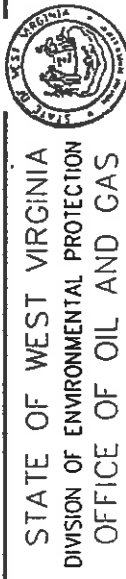
STATE COUNTY PERMIT

MINIMUM DEGREE OF ACCURACY 1 / 200

FILE NO. 5198P1 (126-03&77)

SCALE 1" = 400'

PROVEN SOURCE OF ELEVATION BENCHMARK ELEVATION 833'



STATE OF WEST VIRGINIA  
DIVISION OF ENVIRONMENTAL PROTECTION  
OFFICE OF OIL AND GAS

WELL TYPE : OIL  GAS  INJECTION  WASTE  LIQUID

DISPOSAL  "GAS" PRODUCTION  STORAGE  DEEP  SHALLOW

ELEVATION 1018' WATERSHED ROCK RUN OF MIDDLE ISLAND CREEK

DISTRICT WEST UNION COUNTY DODDRIDGE

SURFACE OWNER FRANKLIN BUTLER AND KEY OIL COMPANY

ROYALTY OWNER FRANKLIN BUTLER AND KEY OIL COMPANY

PROPOSED WORK :

DRILL  CONVERT  DRILL DEEPER  REDRILL  FRACTURE OR STIMULATE  PLUG OFF OLD FORMATION  PERFORATE NEW FORMATION  PLUG AND ABANDON  CLEAN OUT AND REPLUG  OTHER

PHYSICAL CHANGE IN WELL (SPECIFY) TARGET FORMATION ALEXANDER

ESTIMATED DEPTH 5,600'

WELL OPERATOR KEY OIL COMPANY

DESIGNATED AGENT JAN CHAPMAN

ADDRESS 22 GARTON PLAZA WESTON, WV 26452

ADDRESS 22 GARTON PLAZA WESTON, WV 26452

99 Smtn-Flat - 5/1/14

6-6

*be p*

State of West Virginia  
Division of Environmental Protection  
Section of Oil and Gas

Well Operator's Report of Well Work

Farm Name: FRANKLIN BUTLER AND KEY OIL COMPANY Operator Well No. : MCKEEN #1

LOCATION: Elevation: 1018.00 Quadrangle: WEST UNION

District: WEST UNION County: DODDRIDGE  
Latitude: 10,880 Feet South of 39 Deg. 20 Min. 00 Sec.  
Longitude: 350 Feet West of 80 Deg. 45 Min. 00 Sec.

Company: KEY OIL COMPANY  
22 GARTON PLAZA  
WESTON, WV 26452-0000

Agent: JAN E. CHAPMAN

Inspector: MIKE UNDERWOOD  
Permit Issued: 05/13/03  
Well Work Commenced: 06/12/03  
Well Work Completed: 06/15/03

Verbal Plugging  
Permission granted on: \_\_\_\_\_ Rig  
Rotary X Cable \_\_\_\_\_  
Total Depth ( feet ) 5409'  
Fresh water depths ( ft ) 70'  
Salt water depths ( ft ) NONE

Is coal being mined in area ( Y / N ) ? N  
Coal Depths ( ft ) : NONE

OPEN FLOW DATA

Warren  
Speechley  
Rileys  
Benson

Producing formation \_\_\_\_\_ Alexander  
Gas: Initial open flow 60 MCF / d Oil: Initial open flow \_\_\_\_\_ Bbl / d  
Final open flow 1639 MCF / d Oil: Final open flow \_\_\_\_\_ show \_\_\_\_\_ Bbl / d  
Time of open flow between initial and final tests N/A Hours  
Static rock pressure 1650 psig ( surface pressure ) after 96 Hours

Second producing formation \_\_\_\_\_ Commingled \_\_\_\_\_ Pay zone depth ( ft )  
Gas: Initial open flow \_\_\_\_\_ MCF / d Oil: Initial open flow \_\_\_\_\_ Bbl / d  
Final open flow \_\_\_\_\_ MCF / d Oil: Final open flow \_\_\_\_\_ Bbl / d  
Time of open flow between initial and final tests \_\_\_\_\_ Hours  
Static rock pressure \_\_\_\_\_ psig ( surface pressure ) after \_\_\_\_\_ Hours

NOTE: ON BACK OF THIS FORM PUT THE FOLLOWING: 1). DETAILS OF PERFORATED INTERVALS, FRACTURING OR STIMULATING, PHYSICAL CHANGE, ETC. 2). THE WELL LOG WHICH IS A SYSTEMATIC DETAILED GEOLOGICAL RECORD OF ALL FORMATIONS, INCLUDING COAL ENCOUNTERED BY THE WELLBORE.

For: KEY OIL COMPANY

By:   
Date: July 9, 2003

PRESIDENT

0000 4733

AUG 01 2003

Casing & Tubing Size	Used in Drilling	Left In Well	Cement Fill Up Cu. Ft.
8 5/8"	1059'	1059'	225 sks To Surface
4 1/2"	5396'	5396'	460 sks

RECEIVED  
Office of Oil & Gas Permitting  
JUL 17 2003  
WV Department of Environmental Protection

McKeen #1 (47-017-4733)  
Four Stage Foam Frac – Universal Well Services

1 <sup>st</sup> Stage:	Alexander ( 16 holes ) ( 5172' to 5230.25' )	60 Quality Foam. 500 gal. 15% HCL. 60,000# 20/40 sand, 565,000 SCF N2, 815 bbis foam.
2 <sup>nd</sup> Stage:	Benson ( 9 holes ) ( 4903' to 4905' ) Third Riley ( 4 holes ) ( 4821.5' to 4826.25' )	60 Quality Foam. 750 gal 15% HCL. 30,000# 20/40 sand, 359,000 SCF N2, 526 bbis foam.
3 <sup>rd</sup> Stage:	Riley ( 13 holes ) ( 4440.75' to 4473.50' )	60 Quality Foam 750 gal 15% HCL. 5,000# 80/100 sand, 35,000# 20/40 sand, 448,000 SCF N2, 651 bbis foam.
4 <sup>th</sup> Stage:	Speechley (7 holes ) ( 3307' to 3380.50' ) Warren ( 6 holes ) ( 3264' to 3279.50' )	60 Quality Foam. 750 gal 15% HCL. 5,000# 80/100 sand, 45,000# 20/40 sand, 517,000 SCF N2, 729 bbis foam.

WELL LOG

KB-GL	0	10	10
Clay	10	14	14
Sand	14	23	23
Sand & Shale & Red Rock	23	62	62
Sand & Shale	62	195	195
Sand	195	228	228
Sand & Shale	228	260	260
Sand & Shale & Red Rock	260	309	309
Sand	309	353	353
Red Rock	353	373	373
Sand & Shale	373	506	506
Sand	506	530	530
Sand & Shale & Red Rock	530	680	680
Sand & Shale	680	792	792
Sand	792	850	850
Red Rock	850	880	880
Sand & Shale	880	1795	1795
Little Lime	1795	1805	1805
Shale	1805	1840	1840
Big Lime	1840	1898	1898
Keener	1898	1940	1940
Big Injun	1940	2012	2012
Shale	2012	2158	2158
Weir	2158	2247	2247
Shale	2247	2362	2362
Berea	2362	2381	2381
Sand & Shale	2381	2566	2566
Gordon	2566	2615	2615
Shale	2615	3226	3226
Warren	3226	3292	3292
Shale	3292	3300	3300
Speechley	3300	3386	3386
Shale & Siltstones	3386	4408	4408
Riley	4408	4480	4480
Shale	4480	4800	4800
Third Riley	4800	4852	4852
Shale	4852	4892	4892
Benson	4892	4908	4908
Shale	4908	5140	5140
Alexander	5140	5238	5238
Shale	5238	5409	5409
TD	5409		

1/2" water @ 70'

**Gas Checks**

1825' - No Show  
2107' - 2/10<sup>ths</sup> water/lw 2"  
3213' - Odor  
3905' - Odor  
4471' - Odor  
4911' - 2/10<sup>ths</sup> water/lw 2"  
5160' - 2/10<sup>ths</sup> water/lw 2"  
TD - Odor