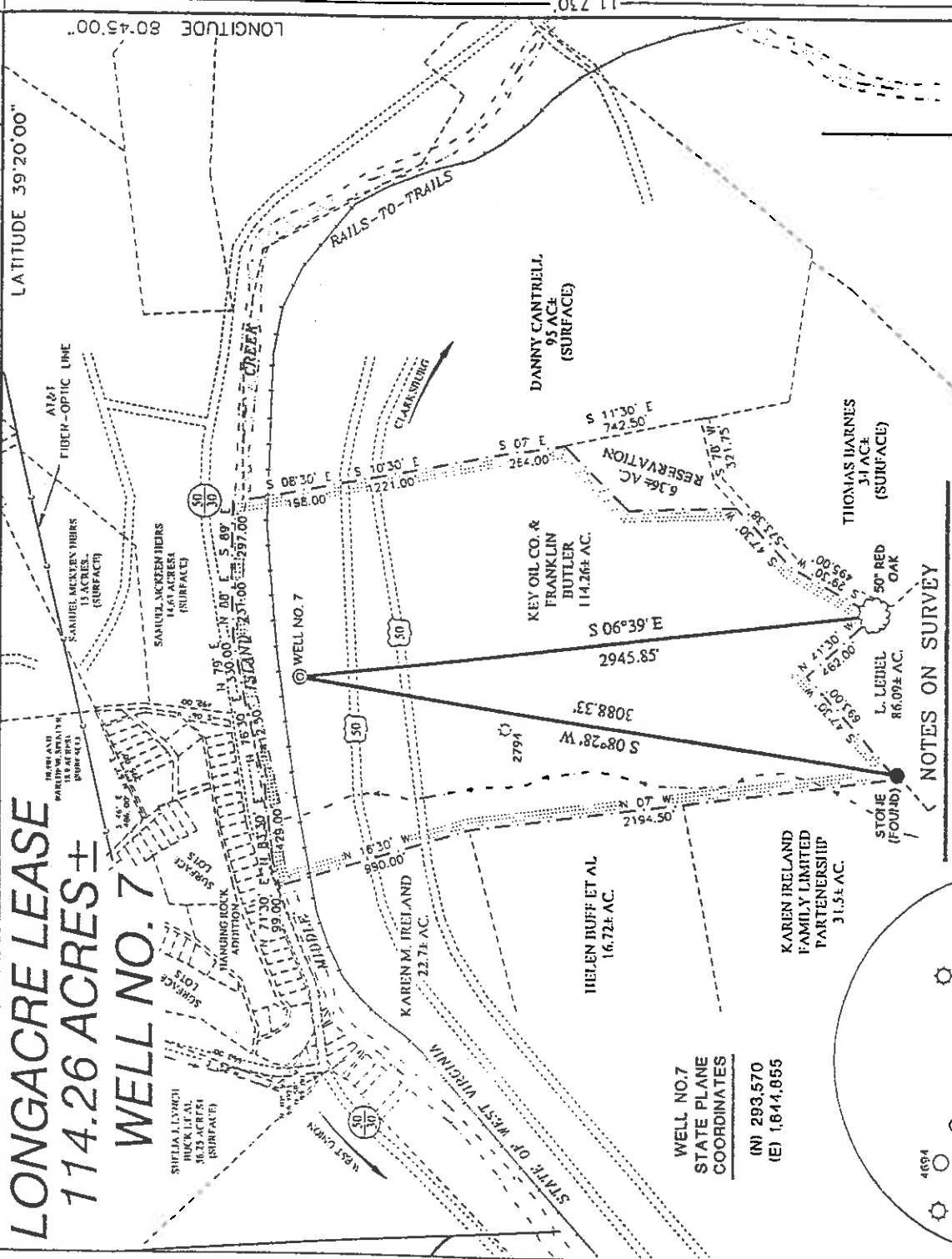
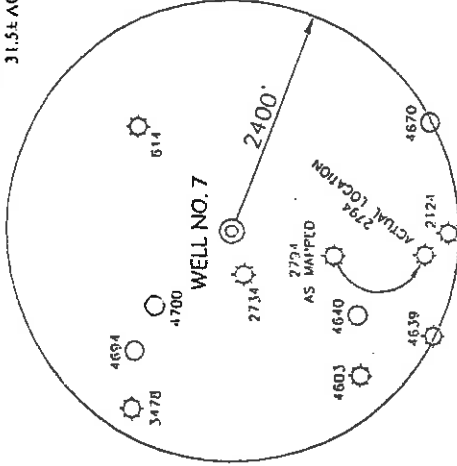


LONGACRE LEASE 114.26 ACRES ± WELL NO. 7



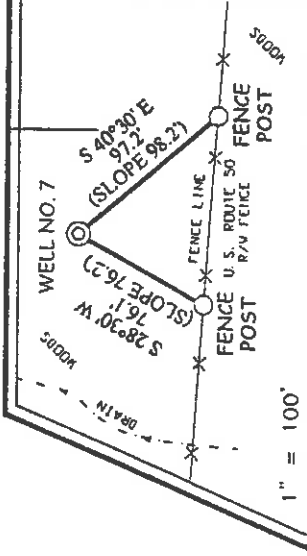
WELL NO. 7
STATE PLANE
COORDINATES
(N) 293,570
(E) 1,644,855



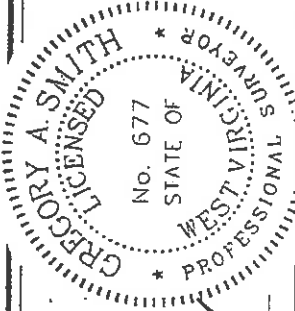
NOTES ON SURVEY

1. TIES TO WELLS AND CORNERS ARE BASED ON STATE PLANE GRID NORTH WV NORTH ZONE NAD '27. MAGNETIC NORTH 9/26/02.
2. TIES TO REFERENCES ARE BASED ON LEASE BOUNDARY SHOWN HEREON TAKEN FROM A TITLE OPINION DATED 5/19/02 AS PREPARED BY GARY MORRIS, LAWYER.
4. SURFACE OWNER AND ADJOINER INFORMATION TAKEN FROM THE ASSESSOR AND COUNTY CLERK RECORDS OF DODDRIDGE COUNTY IN JUNE, 2002.
5. WELL LAT./LONG. ESTABLISHED BY DGPS(SUBMETER MAPPING GRADE).

REFERENCES



I THE UNDERSIGNED, HEREBY CERTIFY THAT THIS PLAT IS CORRECT TO THE BEST OF MY KNOWLEDGE AND BELIEF AND SHOWS ALL THE INFORMATION REQUIRED BY LAW AND THE REGULATIONS ISSUED AND PRESCRIBED BY THE DIVISION OF ENVIRONMENTAL PROTECTION.



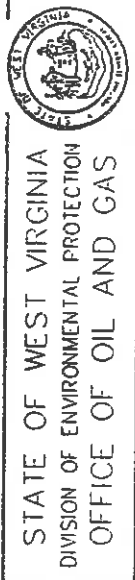
P.S. *Gregory A. Smith*
677

(+) DENOTES LOCATION OF WELL ON UNITED STATES TOPOGRAPHIC MAPS.

DATE NOVEMBER 18, 20 02
OPERATORS WELL NO. LONGACRE NO. 7

API WELL NO. 47-17-04720
STATE COUNTY PERMIT

MINIMUM DEGREE OF ACCURACY 1 / 200 FILE NO. 5033P7 (126--49)
PROVEN SOURCE OF ELEVATION SCALE 1" = 800'
TOP OF KNOB ELEVATION = 1,295'



WELL TYPE : OIL GAS INJECTION DISPOSAL WASTE LIQUID WASTE IF
LOCATION : ELEVATION 834' WATERSHED MIDDLE ISLAND CREEK DISTRICT WEST UNION COUNTY DODDRIDGE
PRODUCTION STORAGE DEEP SHALLOW X

SURFACE OWNER KEY OIL COMPANY AND FRANKLIN BUTLER QUADRANGLE WEST UNION 7.5'
ROYALTY OWNER KEY OIL COMPANY AND FRANKLIN BUTLER ACREAGE 114.26±
LEASE NO. 114.26±
LEASE ACREAGE 114.26±

PROPOSED WORK :
DRILL CONVERT DRILL DEEPER REDRILL FRACTURE OR STIMULATE X PLUG OFF OLD
FORMATION PERFORATE NEW FORMATION PLUG AND ABANDON CLEAN OUT AND REPLUG OTHER
PHYSICAL CHANGE IN WELL (SPECIFY) TARGET FORMATION GORDON ESTIMATED DEPTH 3,000'

WELL OPERATOR KEY OIL COMPANY DESIGNATED AGENT JAN CHAPMAN
ADDRESS 22 GARTON PLAZA WESTON, WV 26452
COUNTY NAME DODD PERMIT 4720

State of West Virginia
Division of Environmental Protection
Section of Oil and Gas

APD

Well Operator's Report of Well Work

Farm Name: FRANKLIN L. BUTLER & KEY OIL COMPANY

Operator Well No. : LONGACRE #7

LOCATION: Elevation: 834'

Quadrangle: WEST UNION

District: WEST UNION County: DODDRIDGE
Latitude: 11,730 Feet South of 39 Deg. 20 Min. 00 Sec.
Longitude: 1,420 Feet West of 80 Deg. 45 Min. 00 Sec.

Company: KEY OIL COMPANY
22 GARTON PLAZA
WESTON, WV 26452-0000

Agent: JAN E. CHAPMAN

Inspector: MIKE UNDERWOOD
Permit Issued: 12/06/02
Well Work Commenced: 02/12/03
Well Work Completed: 02/15/03

Verbal Plugging
Permission granted on: _____
Rotary X Cable _____ Rig
Total Depth (feet) 2540'
Fresh water depths (ft) 40'
Salt water depths (ft) None

Is coal being mined in area (Y / N) ? N
Coal Depths (ft) : 40' (1')

OPEN FLOW DATA

Producing formation Keener
Gas: Initial open flow No Show MCF / d Oil: Initial open flow 1692' - 1758'
Final open flow 1,299 MCF / d Oil: Final open flow show 1762' - 1822'
Time of open flow between initial and final tests N/A Hours 2374' - 2433'

Static rock pressure 290 psig (surface pressure) after 96 Hours

Second producing formation Commingled
Gas: Initial open flow _____ MCF / d Oil: Initial open flow _____ Bbl / d
Final open flow _____ MCF / d Oil: Final open flow _____ Bbl / d
Time of open flow between initial and final tests _____ Hours
Static rock pressure _____ psig (surface pressure) after _____ Hours

NOTE: ON BACK OF THIS FORM PUT THE FOLLOWING: 1). DETAILS OF PERFORATED INTERVALS, FRACTURING OR STIMULATING, PHYSICAL CHANGE, ETC. 2). THE WELL LOG WHICH IS A SYSTEMATIC DETAILED GEOLOGICAL RECORD OF ALL FORMATIONS, INCLUDING COAL ENCOUNTERED BY THE WELLBORE.

For: KEY OIL COMPANY

By: *Jan E. Chapman*
Date: February 20, 2003

PRESIDENT

Dood 4720

Casing & Tubing Size	Used in Drilling	Left in Well	Cement Fill Up Cu. Ft.
8 5/8"	839'	839'	195 sks To Surface
4 1/2"	2531'	2531'	250 sks

RECEIVED
Office of Oil & Gas
Permitting
FEB 27 2003
WV Department of
Environmental Protection

Longacre #7 (47-017 -4720)
Two Stage Foam Frac - B.J. Services

1 st Stage:	Gordon (12 holes) (2408' to 2424')	60 Quality Foam. 500 gal. 15% HCL. 35,000# 20/40 sand, 425,000 SCF N2, 535 bbls foam.
2 nd Stage:	Big Injun (20 holes) (1764' to 1820') Keener (10 holes) (1698' to 1728')	60 Quality Foam. 1,000 gal 15% HCL. 50,000# 20/40 sand, 520,000 SCF N2, 585 bbls foam.

WELL LOG

KB-GL	0	10	
Clay	10	16	
Sand	16	30	
Sand & Shale	30	40	
Coal	40	41	
Sand & Shale	41	78	
Sand	78	90	
Red Rock	90	108	
Sand & Shale	108	212	
Sand	212	222	
Sand & Shale	222	250	
Red Rock	250	267	
Sand & Shale	267	300	
Sand	300	345	
Sand & Shale	345	410	
Red Rock	410	450	
Sand & Shale	450	935	
Sand & Shale	935	1340	
Sand	1340	1360	
Sand & Shale	1360	1590	
Little Lime	1590	1620	
Big Lime	1620	1692	
Keener	1692	1720	
Big Injun	1720	1822	
Shale	1822	1967	
Weir	1967	2057	
Sand & Shale	2057	2171	
Berea	2171	2190	
Sand & Shale	2190	2374	
Gordon	2374	2433	
Shale	2433	2540	
TD	2540		

1/2" water @ 40'

Gas Checks
1504' - No Show
1882' - Odor
2035' - Odor
2323' - Odor