

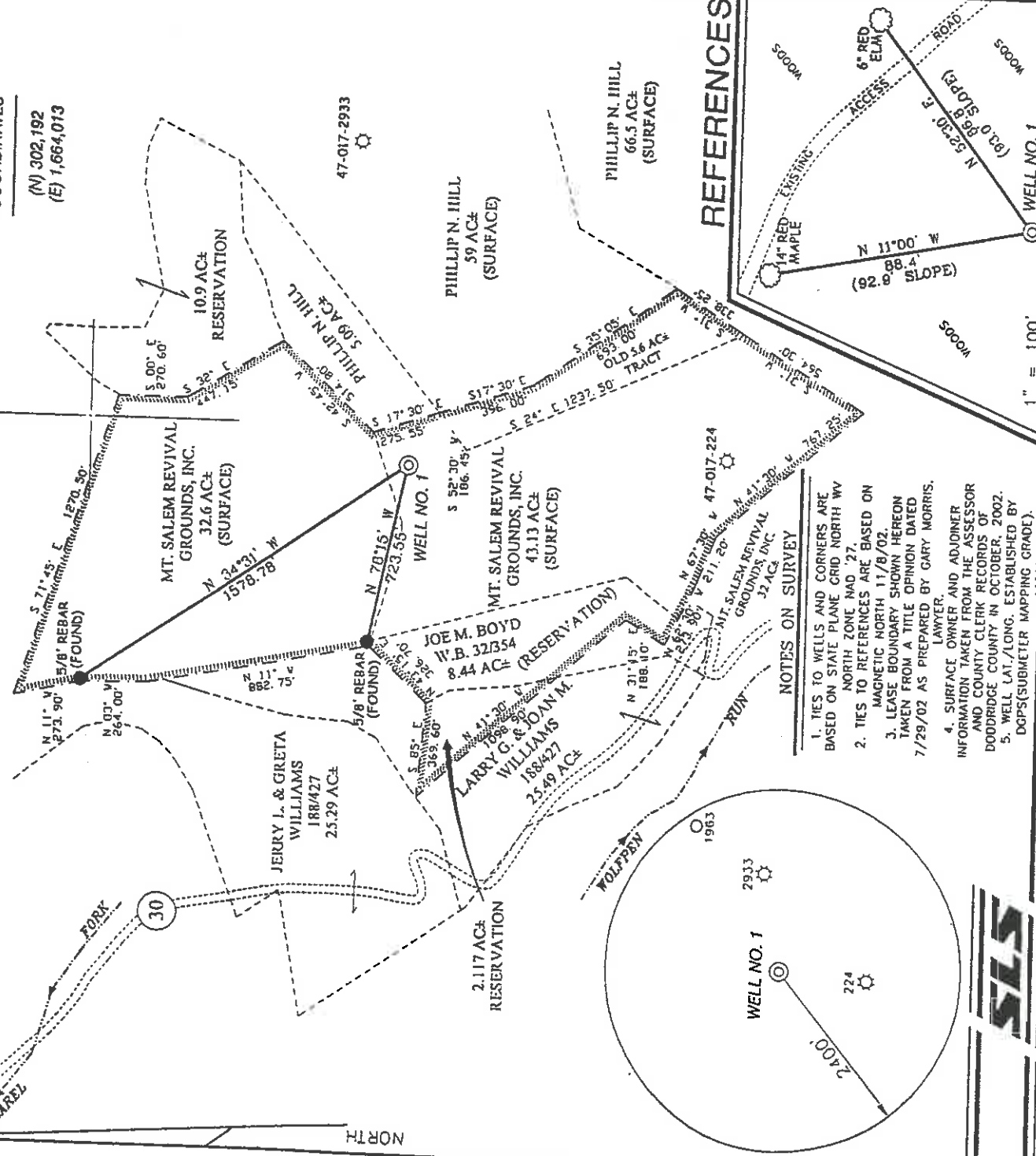
MOUNT SALEM REVIVAL LEASE 81.75 ACRES ± WELL NO. 1

LONG. 80°41'15.6" LATITUDE 39°20'00"

LONGITUDE 80°40'00"

JIM C. HAMMER CO.
65 AC±
(SURFACE)

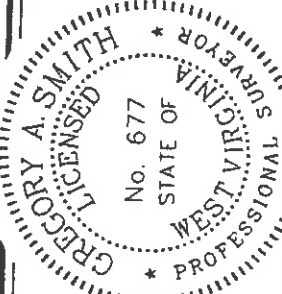
WELL NO. 1
STATE PLANE
COORDINATES
(N) 302,192
(E) 1,664,013



- NOTES ON SURVEY**
1. TIES TO WELLS AND CORNERS ARE BASED ON STATE PLANE GRID NORTH WV NORTH ZONE NAD '27.
 2. TIES TO REFERENCES ARE BASED ON MAGNETIC NORTH 11/8/02.
 3. LEASE BOUNDARY SHOWN HEREON TAKEN FROM A TITLE OPINION DATED 7/29/02 AS PREPARED BY GARY MORRIS, LAWYER.
 4. SURFACE OWNER AND ADDRESSEE INFORMATION TAKEN FROM THE ASSESSOR AND COUNTY CLERK RECORDS OF DODDRIDGE COUNTY IN OCTOBER, 2002.
 5. WELL LAT./LONG. ESTABLISHED BY DGPS (SUBMETER MAPPING GRADE).

I THE UNDERSIGNED, HEREBY CERTIFY THAT THIS PLAT IS CORRECT TO THE BEST OF MY KNOWLEDGE AND BELIEF AND SHOWS ALL THE INFORMATION REQUIRED BY LAW AND THE REGULATIONS ISSUED AND PRESCRIBED BY THE DIVISION OF ENVIRONMENTAL PROTECTION.

P.S. 677
Gregory A. Smith



MINIMUM DEGREE OF ACCURACY 1 / 200 FILE NO. 5093P1 (126-50)
PROVEN SOURCE OF ELEVATION SCALE 1" = 600'
TOP OF KNOB ELEVATION = 1,437'

WELL TYPE : OIL ___ GAS INJECTION ___ DISPOSAL ___ WASTE IF "GAS" PRODUCTION STORAGE ___ DEEP ___ SHALLOW ___
LOCATION : ELEVATION 1,346' WATERSHED WOLFPEN RUN

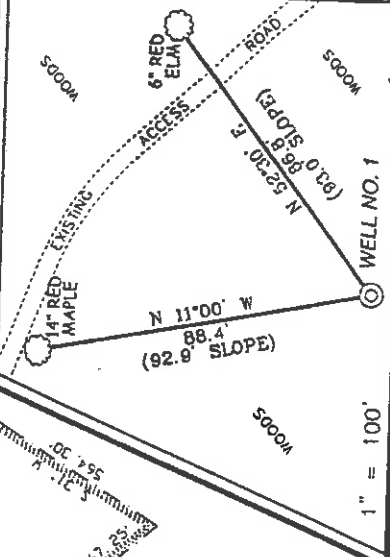
DISTRICT GRANT COUNTY DODDRIDGE
SURFACE OWNER MT. SALEM REVIVAL GROUNDS, INC.
ROYALTY OWNER MT. SALEM REVIVAL GROUNDS, INC.
PROPOSED WORK :

DRILL CONVERT ___ DRILL DEEPER ___ REDRILL ___ FRACTURE OR STIMULATE PLUG OFF OLD FORMATION ___ PERFORATE NEW FORMATION ___ PLUG AND ABANDON ___ CLEAN OUT AND REPLUG ___ OTHER ___
PHYSICAL CHANGE IN WELL (SPECIFY) TARGET FORMATION GORDON ESTIMATED DEPTH 2900'

WELL OPERATOR KEY OIL COMPANY DESIGNATED AGENT JAN CHAPMAN
ADDRESS 22 CARTON PLAZA WESTON, WV 26452
COUNTY NAME DODD PERMIT 4718
ADDRESS 22 CARTON PLAZA WESTON, WV 26452

(SMITHSON TUNST SULLIVA FIELD)

REFERENCES



(+) DENOTES LOCATION OF WELL ON UNITED STATES TOPOGRAPHIC MAPS.
DATE NOVEMBER 11, 2002
OPERATORS WELL NO. 1
API WELL NO. 47-17-04718
STATE COUNTY PERMIT

STATE OF WEST VIRGINIA
DIVISION OF ENVIRONMENTAL PROTECTION
OFFICE OF OIL AND GAS



State of West Virginia
Division of Environmental Protection
Section of Oil and Gas

APB

Well Operator's Report of Well Work

Farm Name: MT. SALEM REVIVAL GROUNDS, INC.

Operator Well No.: MT. SALEM REVIVAL #1

LOCATION: Elevation: 1346'

Quadrangle: WEST UNION

District: WEST UNION
Latitude: 3,550 Feet South of 39 Deg. 20 Min. 00 Sec.
Longitude: 5,980 Feet West of 80 Deg. 40 Min. 00 Sec.

County: DODDRIDGE

Company: KEY OIL COMPANY
22 GARTON PLAZA
WESTON, WV 26452-0000

Agent: JAN E. CHAPMAN

Inspector: MIKE UNDERWOOD
Permit Issued: 12/16/02
Well Work Commenced: 01/21/03
Well Work Completed: 01/24/03

Verbal Plugging
Permission granted on: _____
Rotary X Cable _____ Rig
Total Depth (feet) _____ 3210'
Fresh water depths (ft) _____ 589'
Salt water depths (ft) _____ 1649'

Is coal being mined in area (Y / N)? N
Coal Depths (ft) : NONE

OPEN FLOW DATA

Casing & Tubing Size	Used in Drilling	Left In Well	Cement Fill Up Cu. Ft.
8 5/8"	1368'	1368'	310 sks To Surface
4 1/2"	3052'	3052'	225 sks

RECEIVED
Office of Oil & Gas Permitting
FEB 27 2003
WV Department of Environmental Protection

Producing formation Injun Gordon
Gas: Initial open flow No show MCF / d Oil: Initial open flow 0 Bbl / d
Final open flow 1.237 MCF / d Oil: Final open flow show Bbl / d
Time of open flow between initial and final tests N/A Hours
Static rock pressure 400 psig (surface pressure) after 96 Hours

Second producing formation Commingled
Gas: Initial open flow _____ MCF / d Oil: Initial open flow _____ Bbl / d
Final open flow _____ MCF / d Oil: Final open flow _____ Bbl / d
Time of open flow between initial and final tests _____ Hours
Static rock pressure _____ psig (surface pressure) after _____ Hours

NOTE: ON BACK OF THIS FORM PUT THE FOLLOWING: 1). DETAILS OF PERFORMED INTERVALS, FRACTURING OR STIMULATING, PHYSICAL CHANGE, ETC. 2). THE WELL LOG WHICH IS A SYSTEMATIC DETAILED GEOLOGICAL RECORD OF ALL FORMATIONS, INCLUDING COAL ENCOUNTERED BY THE WELLBORE.

For: KEY OIL COMPANY

By: *Jan Chapman*

Date: February 9, 2003

426 3289
PRESIDENT

0000 4718

